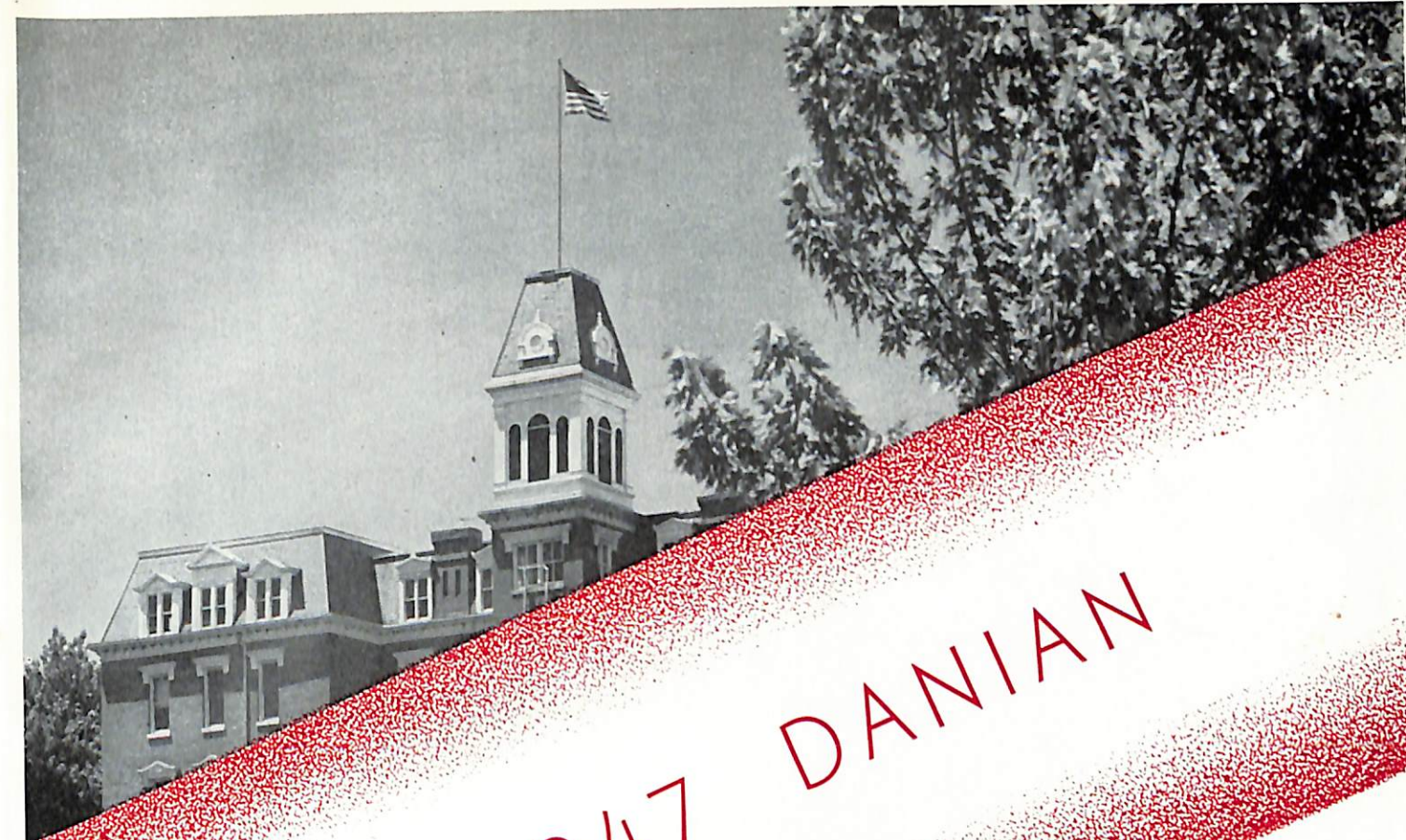




1947

DANIAN



THE 1947 DANIAN

Be not ashamed, my brothers, to stand before the proud
and the powerful with your white robe of simpleness.
Let your crown be of humility, your freedom the free-
dom of the soul.

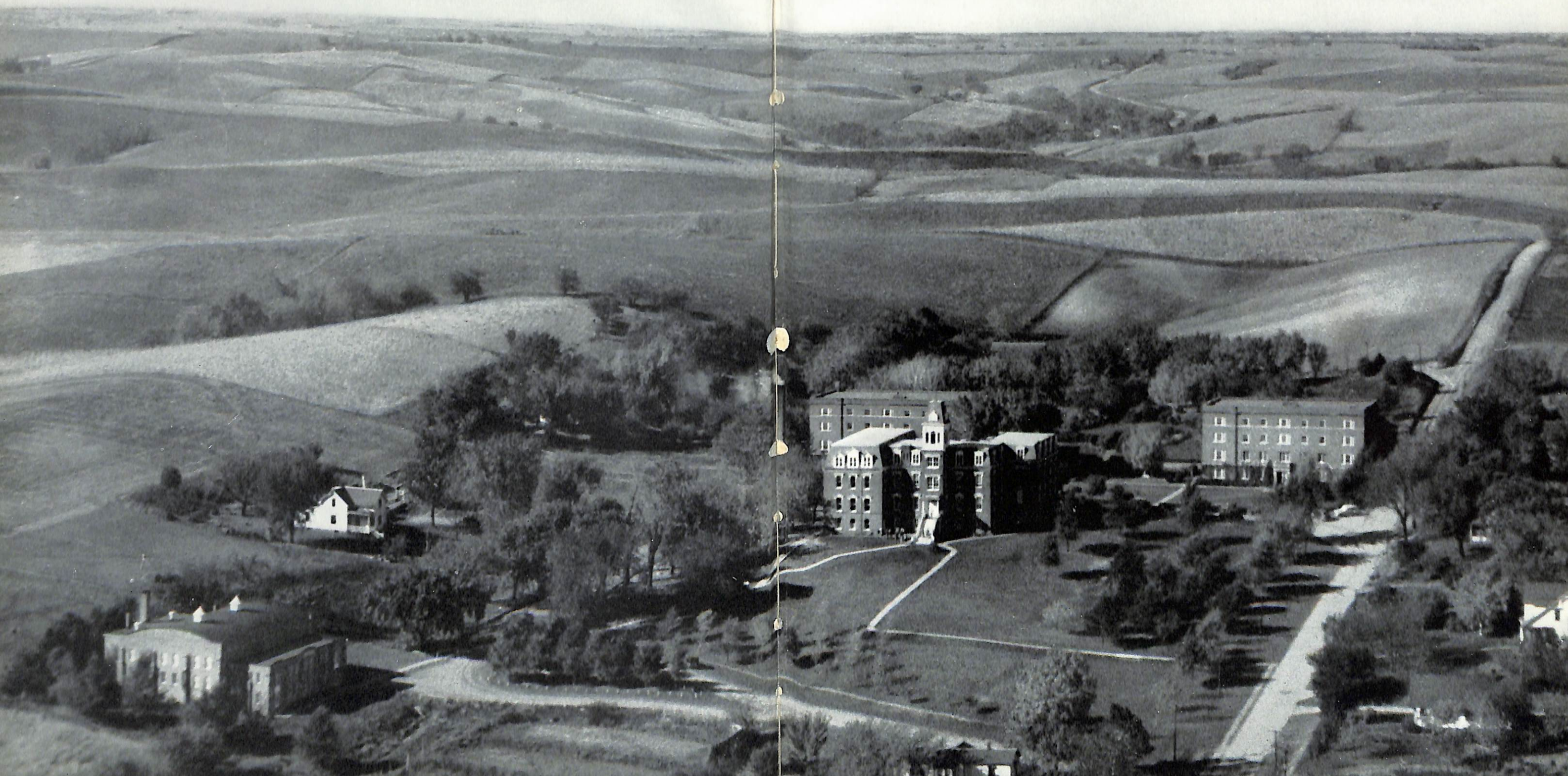
Build God's throne daily upon the ample bareness of
your poverty, and know that what is huge is not great
and pride is not everlasting.

Tagore.

THE 1947 DANIAN

Published by the United Student Body
Dana College and Trinity Theological Seminary
Blair, Nebraska

Editor Norman C. Bansen
Associate Editors . . . Elizabeth J. Hansen
Paul Simon
Business Manager . . . Audrey A. Eastlund





The Rev. N. C. Carlsen, D.D.

DEDICATION

HOWEVER DARK the future might have appeared for Dana during the years of curtailed enrollment, she was always assured of the loyalty of a high synodical official. That official was Dr. N. C. Carlsen, for the past twenty-two years president of the United Evangelical Lutheran Church.

His conservative temperament does not prevent a forward look to the day when Lutheran unity will be a reality. His desire is to build Dana so that ours will be a vital, progressive Christian college when the day of union comes.

Today, as Dana confidently faces a promising future, she pauses to express her appreciation to this man who remained a staunch friend during difficult days, and to him dedicates the 1947 DANIAN.



Curtis Gerald Jorth

IN MEMORIAM

AS MUCH A CHRISTIAN as he was a man, so Curtis Jorth moved through our halls the nearly four years that he spent at Dana and Trinity. Curt sang in the a cappella choir and the male chorus and was outstanding in basketball and baseball. He was graduated from Dana in the summer of 1944 and after spending two years at Luther Seminary in St. Paul, he returned to this campus and was to be ordained with his class from Trinity Seminary this year.

He leaves to remember him a multitude of friends who will not forget his love of hard work, his ready badinage, his constant witness for Christ, his Saviour. "Christ in you, the hope of glory." In this faith Curt still lives.

FOREWORD

SYMBOLIC of Dana's confidence in her future is the Viking ship of the cover design. There are dark skies in the background and waves in the foreground, but the ship is bright with sunlight and a brisk wind is keeping her on a forward course.

In these days of world confusion, Dana makes no apology for being a Christian college. Convinced of her importance as one of America's Christian colleges, the men who guide her future course have made plans for an ambitious building program. A sound inner development through emphasis on scholastic standards is evident.

Thus equipped to compete favorably with secular institutions, and superior to them insofar as she remains true to the way of life that places Christ first, our Dana can look toward new horizons on the seas of Christian higher education.

CONTENTS



COLLEGE AND SEMINARY 11

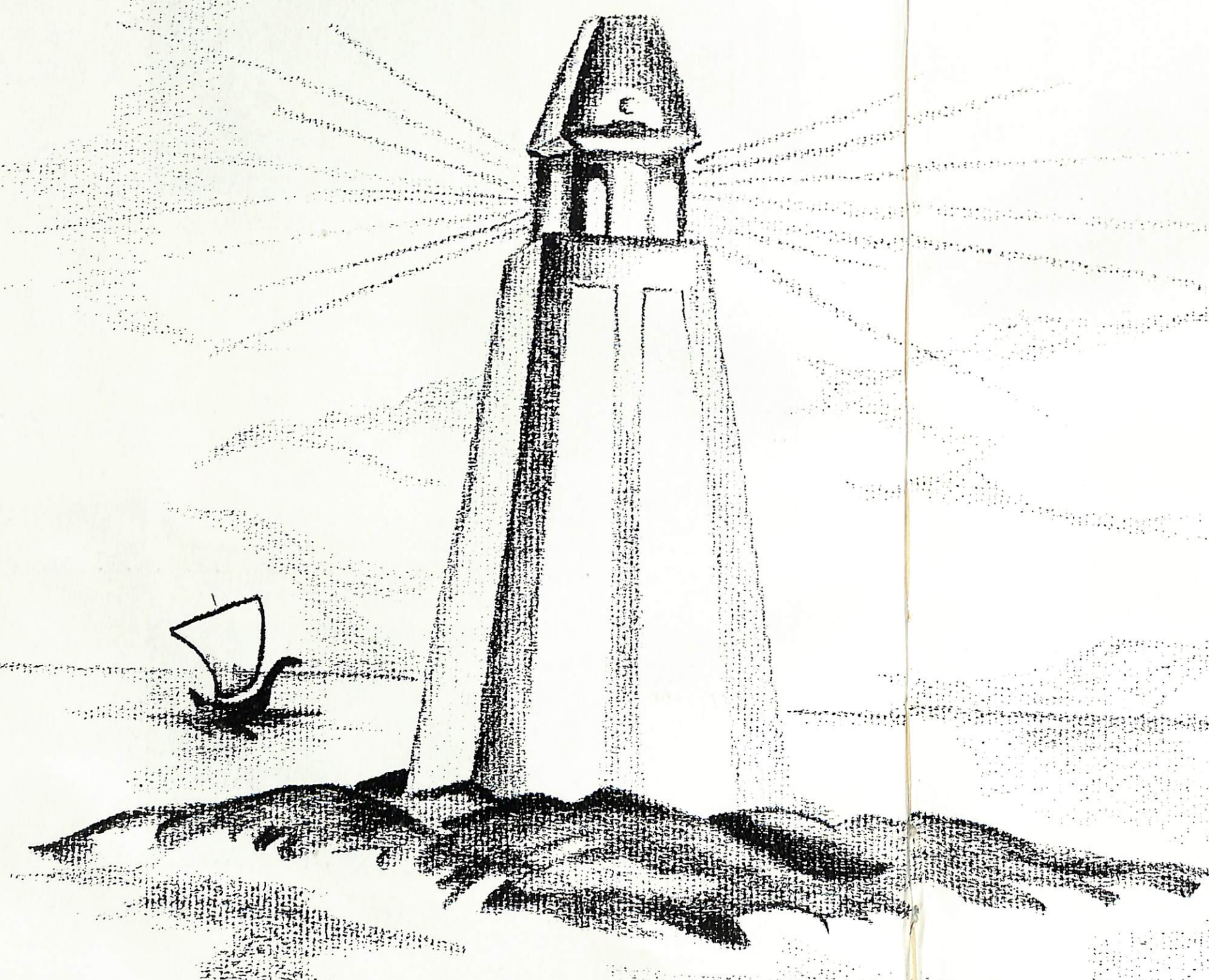


ORGANIZATIONS AND ACTIVITIES 57



RECORD OF THE YEAR 95

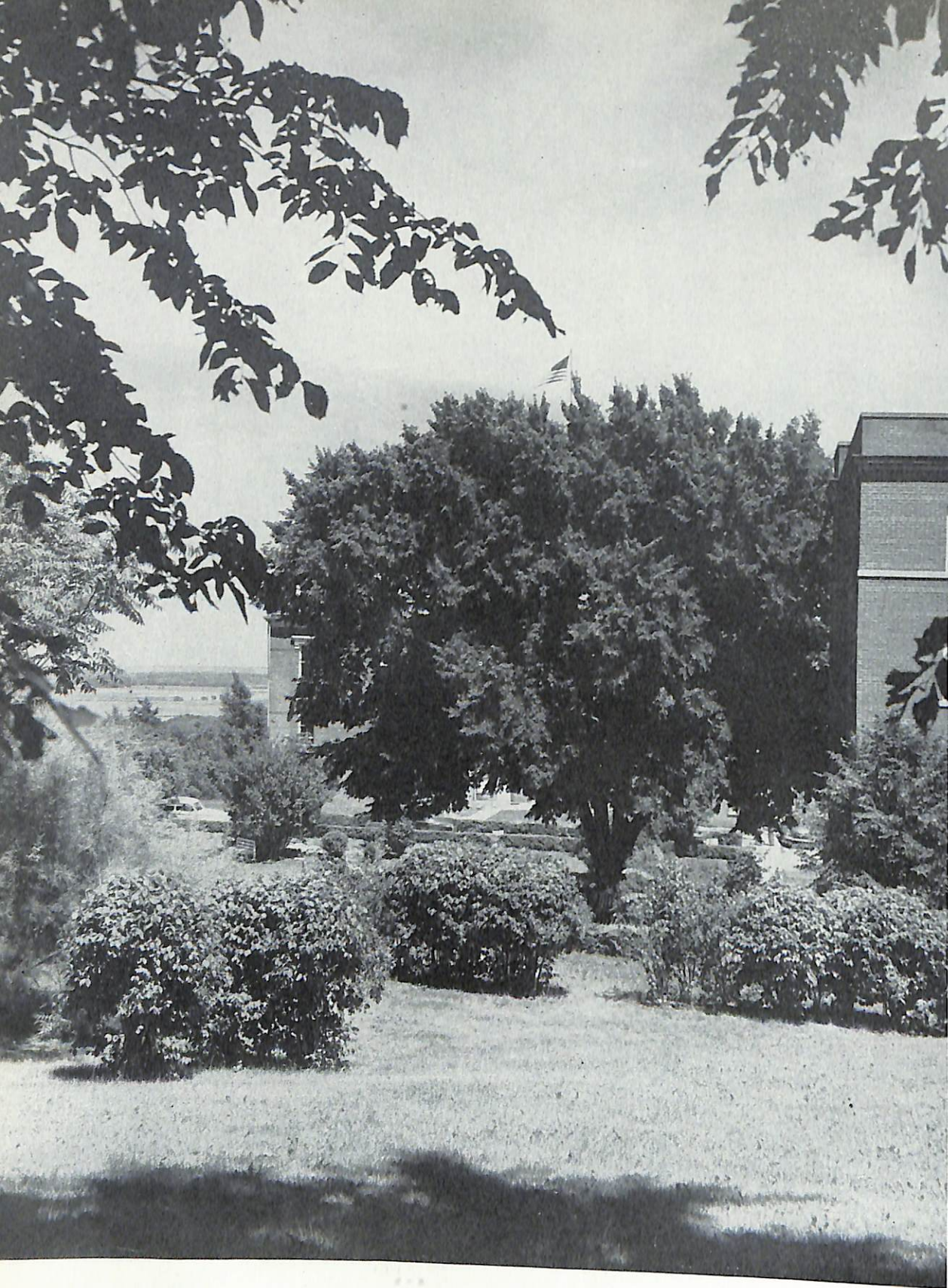
COLLEGE AND SEMINARY



CONTENTS

CAMPUS	12
ADMINISTRATION	18
BOARD OF TRUSTEES	20
ADMINISTRATIVE PERSONNEL	21
FACULTY	22
SEMINARY FACULTY	28
CLASSES	30

Towers and ships are nothingness,
Void of our fellow men to inhabit them.
—Sophocles.



College Park

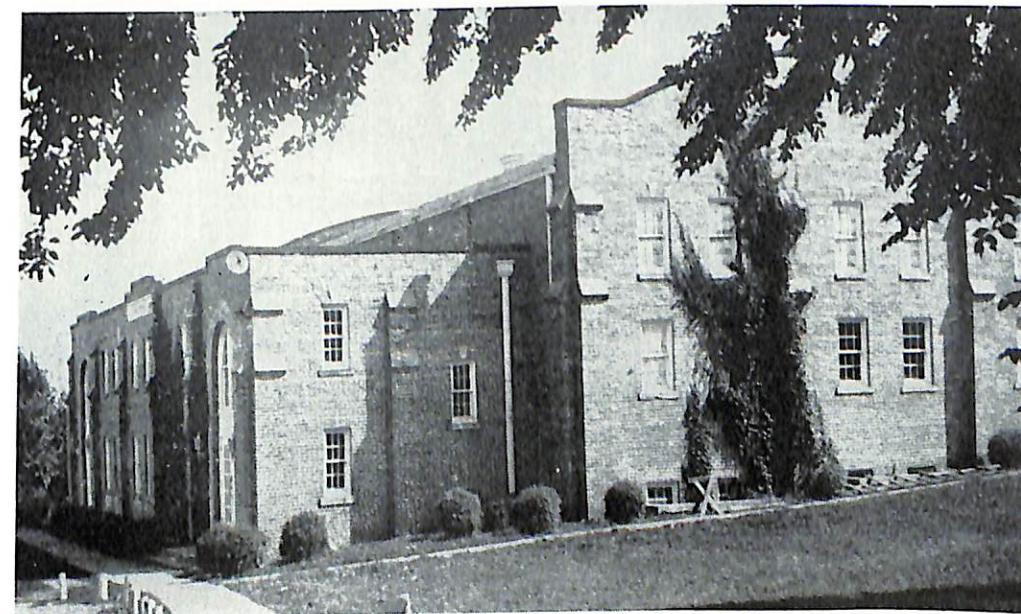
CAMPUS

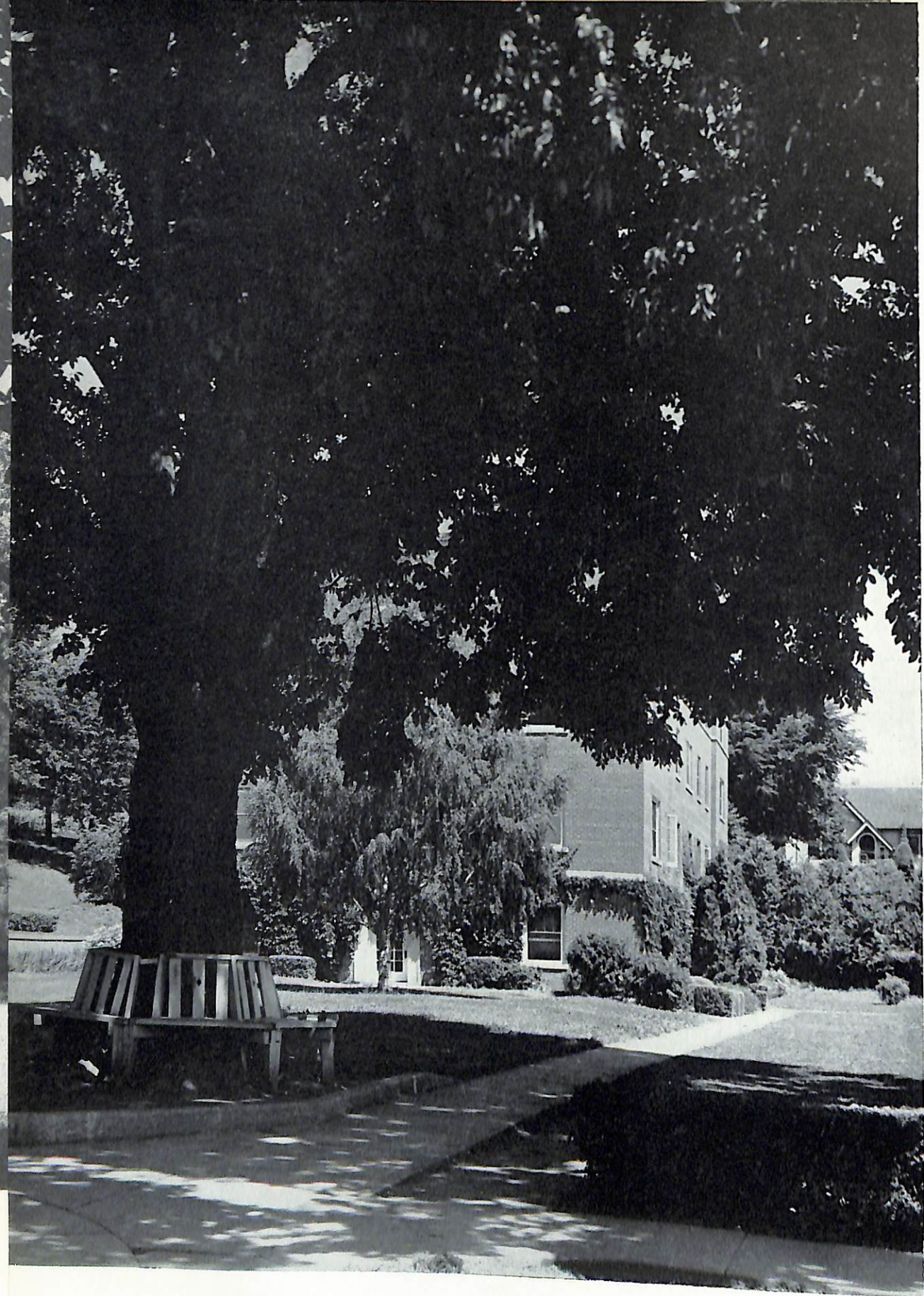
Climb to the summit of College Hill on a spring day to see the campus between the natural amphitheater of higher hills, marveling at the wisdom of the founders in selecting this place for your college. Look out across the expanse of the Missouri Valley's rich farmlands to the slow-moving river and the distant Iowa bluffs marching north and south in bold blue relief. Wander back to the Quadrangle through College Park with its elm grove, Russian olives, scattered evergreens and trees of heaven shading the chain of Ely pools. You'll know then why this campus is called beautiful.



Old Main in the moonlight

Alumni Memorial, the gymnasium-auditorium





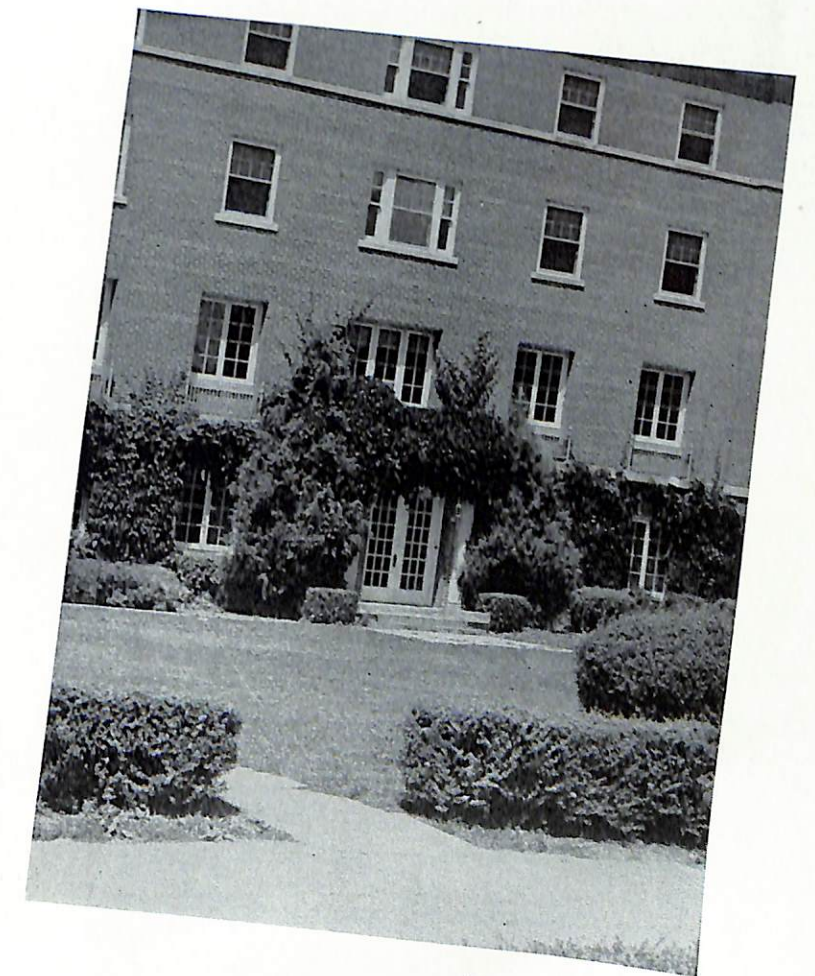
The Quadrangle Elm



Women's Dormitory

CAMPUS

Rapidly becoming a landmark at Dana is the old Quadrangle elm that has stood guard on College Hill since the days when the campus could boast only one tower-crowned building. Today its lower branches embrace the Women's Dormitory and the upper branches reach many feet above that building. Beneath its branches bustles gave way to new styles; this year male residents of the dormitory across the Quadrangle watched the parade of pedal-pushers under the venerable tree.



Men's Dormitory

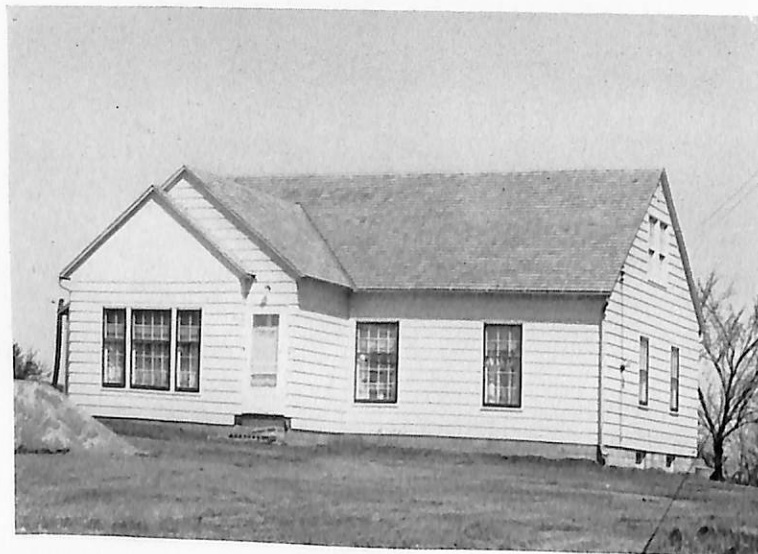
EMERGENCY HOUSING AND PLANS FOR



Ten apartments were constructed for veteran families

Married veteran students, after waiting for many months, moved on April 1 to the ten apartments constructed by the government on the lower campus. Within a month the emergency housing facilities had become homes with amateur gardeners trying their luck in separate garden plots. The village became self-governing upon the election of a "mayor."

First of the new faculty homes



Alert to the housing shortage in Blair, the college took steps last summer to build faculty homes in the vicinity of the college. The first of these new houses to be completed is the one occupied by the family of Rev. C. C. Madsen.

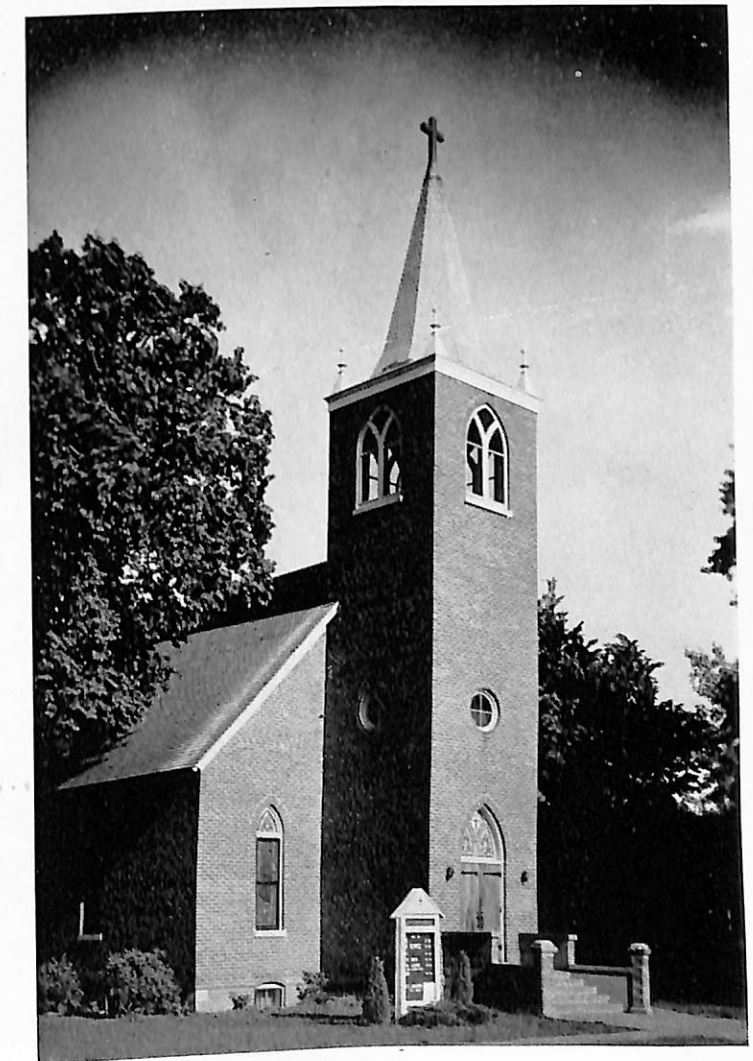
THE FUTURE CHANGE COLLEGE HILL



Bondo Memorial, the president's residence

Long a familiar landmark on upper College Hill, the Bondo Memorial, residence of the college president, will be moved this summer to make way for the new administration-library building. Construction of the new building will begin during the course of the summer.

First Lutheran Church



Although a half mile from the campus, First Lutheran, the college church and place of worship of the majority of students, is so much a part of the life of the college that to think of Dana is to think also of the spire that rises above the trees of Blair.

PRESIDENT



The Rev. Richard E. Morton

In spite of the shortage of capable, trained instructors, President Morton increased the staff to meet the requirements of the largest student body in the history of the college and at the same time maintained high standards of teaching efficiency and scholarship. A strong emphasis was placed on high scholastic standards, library improvement, and development of the scientific laboratories. The president is directing the college and seminary toward inner development as well as expansion of the physical plant.

ADMINISTRATION

DEAN OF TRINITY THEOLOGICAL SEMINARY



The Rev. Theodore I. Jensen

Serving capably in his position as dean, Rev. Theo. I. Jensen has marshalled the enlarged faculty forces in his efforts toward higher scholastic and spiritual standards in the seminary. Conflicting schedules, the result of last year's seminary sabbatical leave, and the introduction of new professors have added to the problems of reorganization. Dean Jensen's scholarly leadership, together with his urgent plea for more young people to enter the ministry, are indicative of an encouraging future for the seminary.

BOARD OF TRUSTEES



Rev. S. S. Nielsen, Dr. R. O. Skar, Rev. Ervin Bondo, Mr. Clemens Vig, Rev. Christian Justesen, chairman, Mr. P. A. Magnussen, Rev. Alvin M. Petersen, Rev. V. W. Bondo, Dr. N. C. Carlsen. Other members are Dr. Silas Andersen and Mr. S. R. Knutson.

Coming from points as far distant as California and Ontario, members of the Board of Trustees bring to meetings the viewpoints of their distant homes. As Christian businessmen and pastors, they have a rich background of varied experience and together with a sound business sense possess the vision and inspiration that is so necessary for leaders of a growing, revitalized school.

These are the men that, working together with the college president, draft plans for the future Dana to be finally approved by the synod. Their conviction that the Christian college has a place in America, is clearly demonstrated by the fact that theirs is a labor of love—they serve without compensation, taking time from their own busy schedules to meet regularly twice each school year.

ADMINISTRATIVE PERSONNEL



F. H. Larson
Registrar and Business Manager



Sena Bertelsen
Librarian



Marie A. Johnson
Secretary



Dorothy Granlund
Nurse



Marie Hurdum
Chef

FACULTY



DEAN OF THE FACULTY

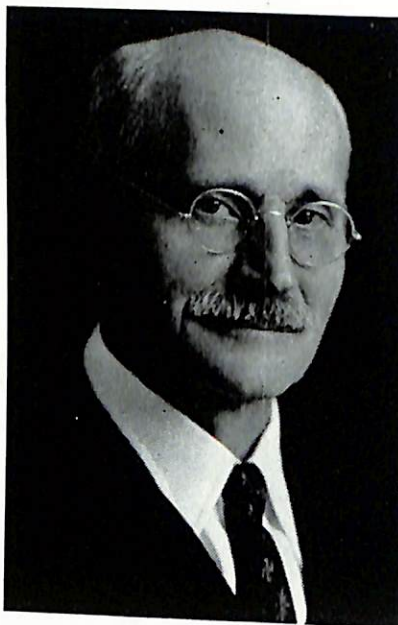
Dr. H. F. Swansen
History, Political Science



Louise Bale
French, Spanish



O. F. Bale
German, Classical Languages
Dean of Men



H. Skov Nielsen
Danish



E. M. Rasmussen
Psychology, Education

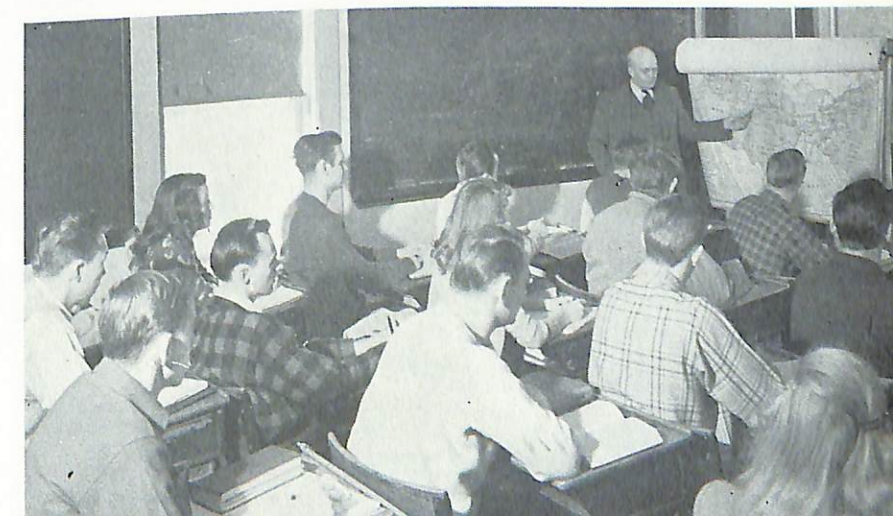


Ella V. Hansen
Education
Dean of Women



V. L. Strepke
Sociology

Lecture in United States History





Nellie F. Falk
English



Louise Woeppel
English



Paul Neve
Music, Director of Choir



M. J. Widman
Music



Dorothy Widman
Piano



F. William Thomsen
Art



Art class in session

Recording equipment in English Department





Laboratory period in chemistry



F. W. Hengeveld
Chemistry



R. L. Moenter
Physics, Mathematics



Marie Tucker
Biology



A. J. Snowbeck
*Business Administration,
Economics*



Lydia Herrmann
Commercial Arts



Paul Peterson
*Physical Education
Coach of Athletics*

Instruction in commercial arts



THEOLOGICAL SEMINARY FACULTY



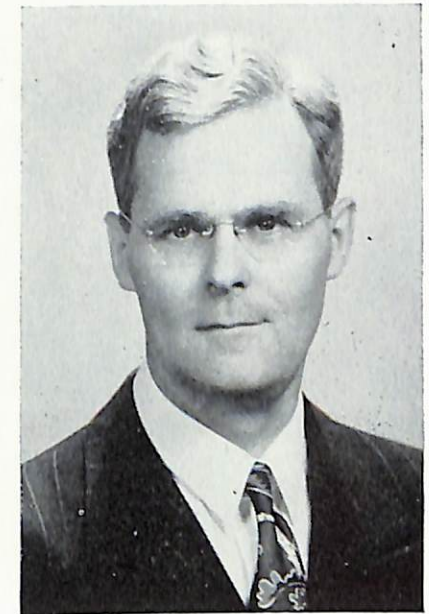
C. B. Larsen
Professor of New Testament



C. C. Madsen
Professor of Practical Theology



Ethan Mengers
Professor of Old Testament



P. C. Nyholm
Professor of Church History



J. P. Nielsen
Professor Emeritus of Old Testament and Dogmatics

The seminary, re-opening after a sabbatical year, was enlarged by the addition to the faculty of Dr. Ethan Mengers, former pastor at Northfield, Minnesota, and Rev. C. C. Madsen, former Marine Corps chaplain. Rev. P. C. Nyholm rejoined the faculty after serving as a pastor in Chicago and completing residence requirements for his Ph.D. degree at the University of Chicago. Dr. C. B. Larsen attended the Graduate School of Theology of Oberlin College. Rev. Theo. I. Jensen, dean of the seminary, received his S.T.M. degree from Union Theological Seminary, New York.

Dr. Larsen and students in the seminary reference room



FRESHMEN

The largest freshman class in Dana's history is also the most cosmopolitan of all the classes, with students from eighteen states and the Philippine Republic. Members of the class were quick to show definite leadership abilities and not a few have already been elected to offices in various campus organizations.



Mildred L. Alback
Herman, Nebraska

Wendell P. Alton
Pisgah, Iowa

Doris M. Andersen
Blair, Nebraska



Edward P. Andersen
Oakland, California

Virgil R. Anderson
Hamlin, Iowa

George C. Andreasen
Brooklyn, New York



Harry E. Andreasen
Brooklyn, New York

Carol R. Andresen
Omaha, Nebraska

Gerhardt J. Carlsen
Brooklyn, New York



Mary Jo Carlsen
Brooklyn, New York

Donald J. Christensen
Green Bay, Wisconsin

Kjer Christensen
Kimballton, Iowa

Leona I. Christensen
Blair, Nebraska

Lorraine Christensen
Ruskin, Nebraska

Ray L. Christensen
Racine, Wisconsin

C. Arthur Christiansen
Troy, New York

Betty M. Clausen
Chicago, Illinois

Beverly M. Clausen
Racine, Wisconsin

Pauline D. Clausen
Harlan, Iowa

James H. Coffey
Blair, Nebraska

Norma M. DeGrave
Green Bay, Wisconsin

George R. Demant
Sturtevant, Wisconsin

Glennis E. DeVasure
Tekamah, Nebraska

Toralf H. Digerness
Alamo, North Dakota

Charles O. Eastlund
Albert Lea, Minnesota

Duane A. Farrens
Decatur, Nebraska

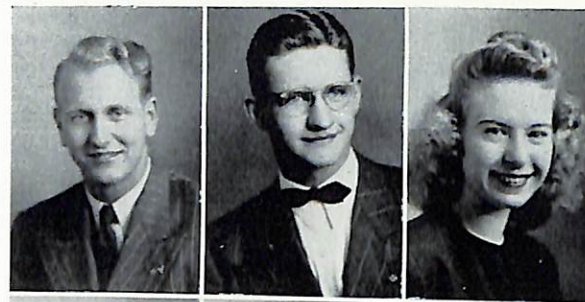
James T. Glass
Kansas City, Missouri

Mildred A. Guyer
Blair, Nebraska

Betty J. V. Hansen
Laurel, Nebraska

Charles R. Hansen
Dannebrog, Nebraska





Howard C. Hansen
Greenville, Michigan

James R. Hansen
Cedar Falls, Iowa

Karen K. Hansen
Spencer, Iowa



Marie C. Hansen
Blair, Nebraska

Robert N. Hansen
Greenville, Michigan

Roger J. Hanson
Hutchinson, Minnesota



Ellinor Hendricksen
Dannebrog, Nebraska

Beverly A. Hill
Des Moines, Iowa

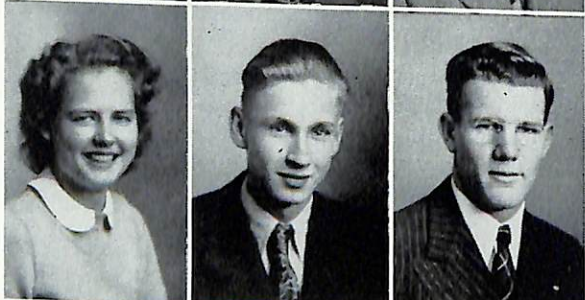
Herbert A. Hjortsvang
Chicago, Illinois



James F. Holmes
Hampton, Nebraska

Donald D. Hundtoft
Sidney, Montana

Philip R. Iversen
McNabb, Illinois



Janet A. Jacobsen
Atlantic, Iowa

Arnold W. Jensen
Poy Sippi, Wisconsin

Donald S. Jensen
Albert Lea, Minnesota



Edna V. Jensen
Lucadale, Mississippi

Elsie M. Jensen
Long Beach, California

Frederik V. Jensen
Spencer, Iowa

Marvin L. Jensen
Audubon, Iowa

Betty L. M. Jeppesen
Audubon, Iowa

Paul A. Jeppesen
Ord, Nebraska

Harold J. Jersild
Chicago, Illinois

V. Ione Jespersen
Herman, Nebraska

Betty J. Johnson
Chicago, Illinois

Colleen M. Johnson
Elk Horn, Iowa

Earl M. Johnson
Kelly, Iowa

Harold E. Johnson
Afton, Iowa

Lois V. Johnson
Chicago, Illinois

Willard C. Johnson
Kelly, Iowa

Beverly Johansen
Fowler, California

Rhoda C. Johansen
Latimer, Iowa

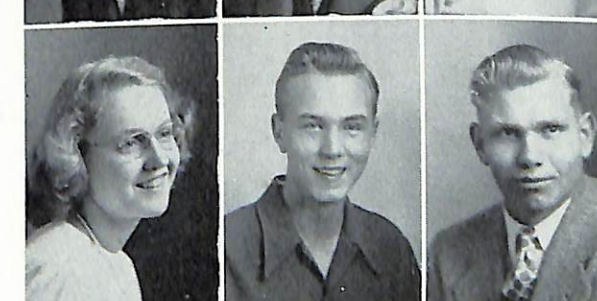
Allan H. Jorgensen
Fremont, Nebraska

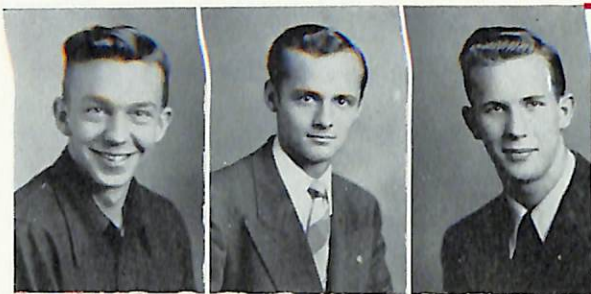
Donald L. Kaldahl
Hardy, Nebraska

Vernon W. Kaldahl
Hardy, Nebraska

Nona L. Kastl
Herman, Nebraska

Anton C. Kirkegaard
Aurora, Colorado

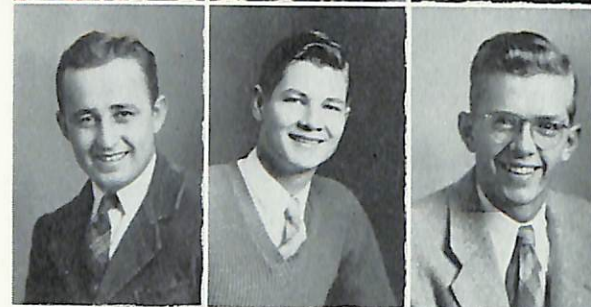




Robert C. Kirkegaard
Racine, Wisconsin

Jack Kitterman
Dannebrog, Nebraska

Charles E. Knudsen
Park Ridge, Illinois



Jack W. Krogh
Racine, Wisconsin

Kenneth C. Krogh
Blair, Nebraska

Arnold L. Larsen
Audubon, Iowa



K. Gerhardt Larsen
Cordova, Nebraska

Leon R. Larsen
Hardy, Nebraska

Robert Laursen
Omaha, Nebraska



Aida L. Limjoco
San Juan, Philippine Republic

Benjamin L. Limjoco
San Juan, Philippine Republic

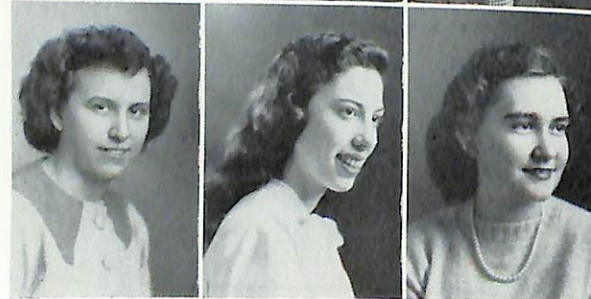
Elaine G. Lincoln
Oakland, California



Mary Ellen Lindholm
Audubon, Iowa

Leah Mae Lowe
Herman, Nebraska

Carrol L. Madsen
Hampton, Nebraska



Esther J. Madsen
Audubon, Iowa

Margaret E. Madsen
Eugene, Oregon

Helen M. Marcussen
Denmark, Wisconsin

Russell R. Megrue
Tekamah, Nebraska

P. Eugene Mengers
Blair, Nebraska

Ruth Molholt
Chicago, Illinois

Lyle R. Morgensen
Henry, Illinois

Harriet A. Mortensen
Curtis, Nebraska

C. Joyce Nelson
Fremont, Nebraska

Lorraine M. Nelson
Kenmare, North Dakota

D. Marilyn Neve
Sleepy Eye, Minnesota

Betty M. Nielsen
Kimballton, Iowa

Eleanor M. Nielsen
Albert Lea, Minnesota

Elna M. Nielsen
Des Moines, Iowa

Howard C. Nielsen
Westby, Montana

Merl Dean Nielsen
Laurel, Nebraska

Gerhard J. Nygaard
Blair, Nebraska

Janice R. Nygaard
Blair, Nebraska

Robert E. Olesen
Penn Yan, New York

Willis J. Olson
St. Paul Park, Minnesota

Lois V. Paine
Blair, Nebraska





Stuart R. Paulsen
Poy Sippi, Wisconsin

Harold Pedersen
Atlantic, Iowa

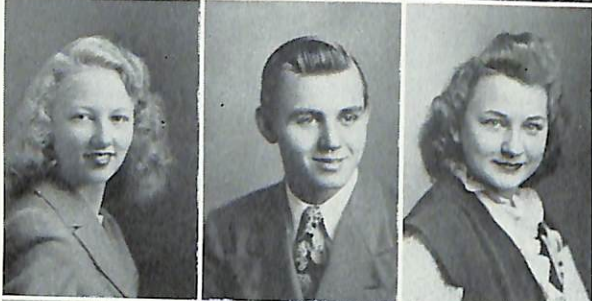
Charles H. Petersen
Cobden, Minnesota



Dale M. Petersen
Eugene, Oregon

Elmer P. Petersen
Racine, Wisconsin

Reuben L. Petersen
Sidney, Montana



Virginia A. Petersen
Kimballton, Iowa

Dale A. Peterson
Denmark, Wisconsin

Ferne M. Peterson
Underwood, Iowa



Margaret A. Peterson
Lindsay, Nebraska

Donald A. Poh
Green Bay, Wisconsin

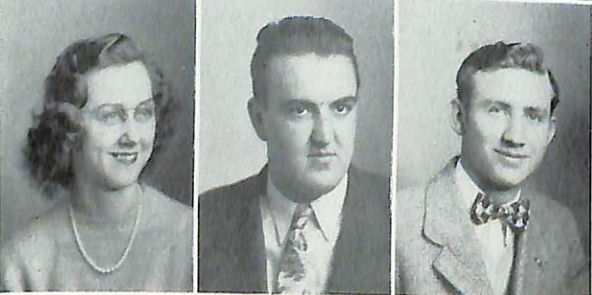
Oliver K. Poulson
Blair, Nebraska



Patricia J. Quist
Caruthers, California

Arlene M. Rudolph
Fremont, Nebraska

Albert E. Rasmussen
Denver, Colorado



Esther R. Rasmussen
Audubon, Iowa

John R. Richter
Blair, Nebraska

Harold A. Schou
Sleepy Eye, Minnesota

Beverly J. Scheel
Racine, Wisconsin

Dorothy M. Seybold
Columbus, Nebraska

Mary C. Skobo
Blair, Nebraska

May E. Skobo
Blair, Nebraska

Ruth E. Solevad
Watsonville, California

Eldon R. Sorensen
Ruskin, Nebraska

Vivian J. Sutherland
Laurel, Nebraska

L. Jeanne Thompson
Blair, Nebraska

Ella W. Thomsen
Volin, South Dakota

Peter L. Thorslev
Kennard, Nebraska

William K. Tripp
Blair, Nebraska

LeOtis M. Vaaler
Kenmare, North Dakota

Dorcas J. Vammen
Oaks, Oklahoma

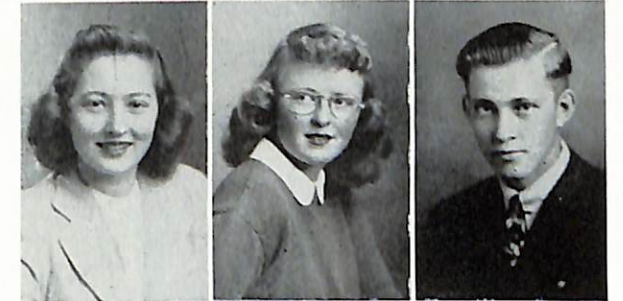
Mark C. Viere
Des Moines, Iowa

William D. Wesin
Blair, Nebraska

Darrel E. Wilson
Decatur, Nebraska

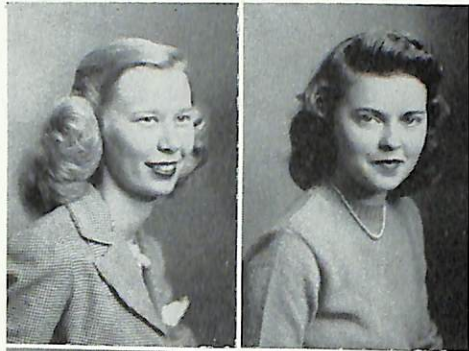
Norman M. Winther
Racine, Wisconsin

James H. Youmans
Portland, Maine

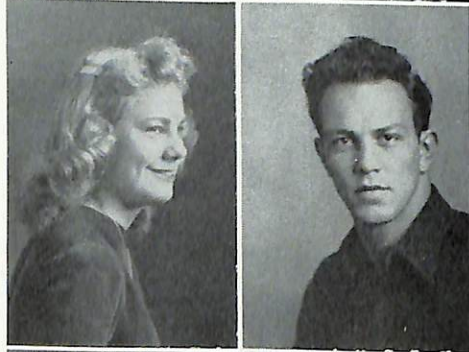


SOPHOMORES

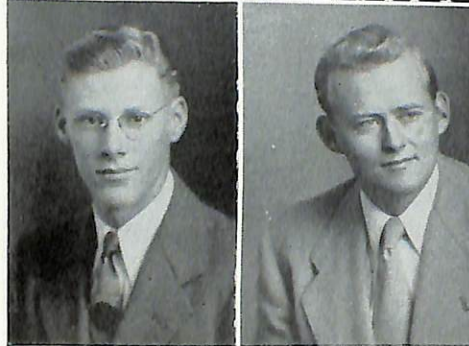
Recognizing Dana's sound undergraduate education, most of the sophomores will be returning as juniors next year. Others who receive two-year teaching and commercial certificates will take their places in the professional world.



Betty J. Andersen
Blair, Nebraska



Joan B. Andersen
Ringsted, Iowa



Lois E. Andersen
Brush, Colorado

Maynard F. Andersen
Racine, Wisconsin

Virgil R. Bollesen
Audubon, Iowa

Niels C. Carlsen
Blair, Nebraska

Jeanette J. Christensen
Minden, Nebraska

W. Eugene Flynn
Blair, Nebraska

Lee L. Guyer
Blair, Nebraska

Cleo D. Hanson
Callender, Iowa

John E. Hansen
Blair, Nebraska

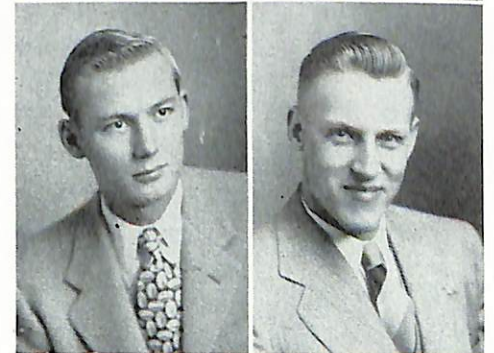
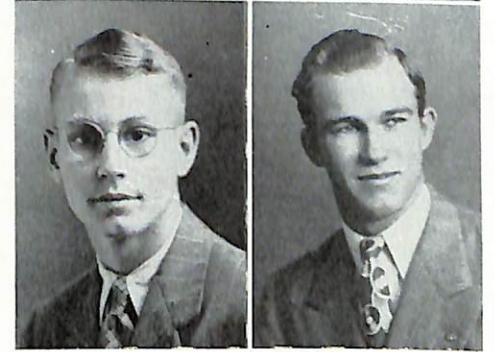
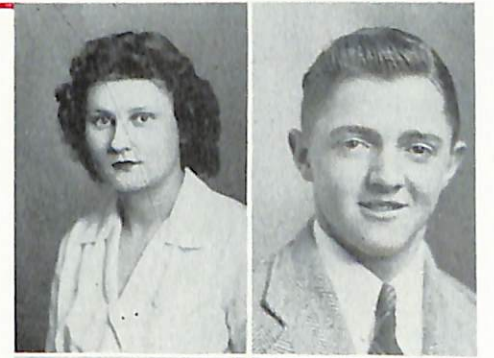
Norman D. Hansen
Fresno, California

Paul O. Hansen
Cottage Grove, Oregon

Norlan L. Hanson
Somers, Iowa

Gerald D. Hatt
Dannebrog, Nebraska

Esther V. Hertz
Omaha, Nebraska





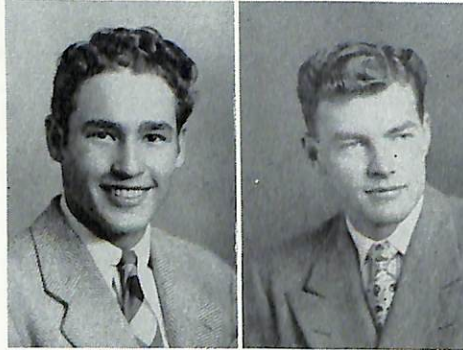
Shirley K. Holman
Ruskin, Nebraska



Rhoda M. Iversen
Shelby, Iowa



Dolores R. Jensen
Albert Lea, Minnesota



Jack P. Jensen
Arlington, Nebraska



Paul C. Johnsen
Fremont, Nebraska

Shirley F. Hughes
Decatur, Nebraska

Rhoda G. Jacobsen
Rupert, Idaho

Howard Jensen
Arlington, Nebraska

Willis V. Johansen
Fowler, California

Ray V. Johnsen
Fremont, Nebraska

Jeraldine A. Johnson
Ringsted, Iowa

Sidney E. Jorgensen
Poy Sippi, Wisconsin

Marjorie E. Jorth
Milford, Iowa

Marilyn L. Juul
Hutchinson, Minnesota

Janice M. Kruse
Peterson, Iowa

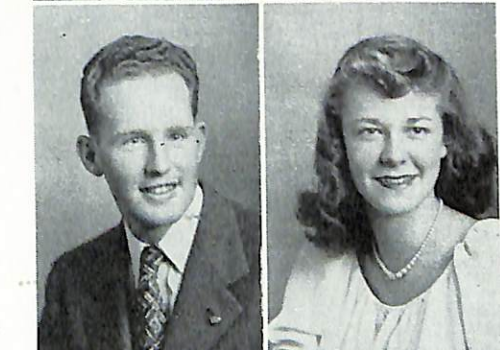
Asta Mae Larsen
Hardy, Nebraska

Forrest E. Leighton
Cumberland Center, Maine

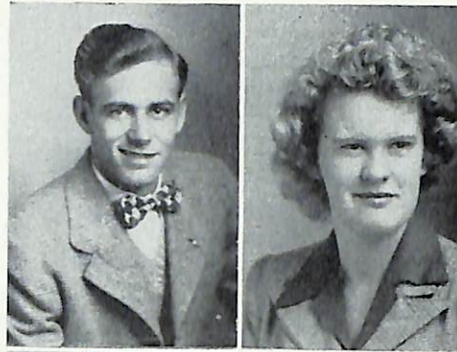
Mariane E. Lund
Troy, New York

Dean R. Madsen
Bradgate, Iowa

Carol E. Mengers
Blair, Nebraska



SOPHOMORES



Del W. Neary
Decatur, Nebraska

Marjorie E. Nelson
Fremont, Nebraska



Maryann C. Nelson
Fremont, Nebraska

Dorothy A. Paulsen
Reinbeck, Iowa



William R. Pearson
Millard, Nebraska

Eunice E. Petersen
Hardy, Nebraska



Howard P. Petersen
Dannebrog, Nebraska

Ivadell H. Raben
Albert Lea, Minnesota



Don A. Rouse
Tekamah, Nebraska

Betty Schmidt
Maywood, Illinois

SOPHOMORES

Donald D. Schou
Sleepy Eye, Minn.

Paul M. Simon
Highland, Illinois

Jack F. Smith
Blair, Nebraska

Elizabeth H. Solevad
Watsonville, California

Arthur W. Sorensen
Des Moines, Iowa

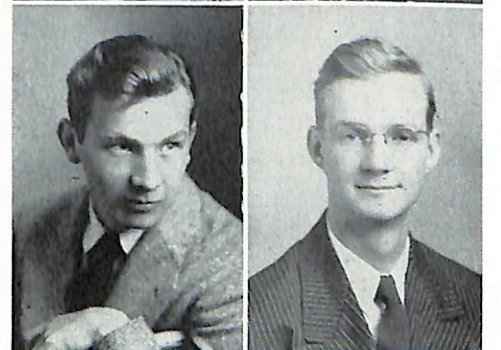
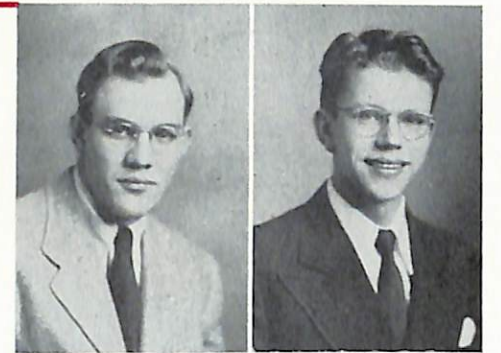
Richard Videbeck
Brooklyn, New York

Robert E. Videbeck
Brooklyn, New York

Kenneth D. Weaver
Batesland, South Dakota

E. Jean West
Herman, Nebraska

Rita V. Williams
Herman, Nebraska



JUNIORS

Well represented in key student body and organization offices this year, the juniors will continue this leadership as they return to the campus in the fall. During commencement week at the ceremony of the planting of the ivy, the juniors formally assume the position of leadership as the seniors prepare to become alumni.



Harold L. Andersen
Racine, Wisconsin



Fred H. Brengelman
Farwell, Nebraska



Elizabeth Christensen
Blair, Nebraska



Holger C. Christensen
Tilley, Alberta

JUNIORS



C. Jack Goldammer
Elkhart Lake, Wisconsin



Florence M. Hansen
Council Bluffs, Iowa



Raymond H. Hansen
Greenville, Michigan



Franklin M. Highby
Albert Lea, Minnesota

Anna H. Huber
Blair, Nebraska



Alvina M. Larsen
Underwood, Iowa



Archie L. Madsen
Hampton, Nebraska



Norris A. Michelson
Huntington Park, California



Lawrence C. Nelsen
Albert Lea, Minnesota



Earl I. Nelson
Milwaukee, Wisconsin

Ried V. Neve
Sleepy Eye, Minnesota



Alice L. Romer
Winnipeg, Manitoba



Ewald T. Sorensen
Racine, Wisconsin



Abbie A. Vaughan
Blair, Nebraska





Raymond M. Paulsen
Blair, Nebraska

THE CLASS PRESIDENT

The senior class president, Raymond Paulsen, has held the office of vice-president in the History Club this year. During his sophomore year he was a member of the football team. Graduating with an English and history major, Ray enters the seminary next fall. He resides in Blair with his wife and two children.

SECRETARY



Joyce E. McLeod
Dannebrog, Nebraska

Joyce will go on to graduate work in a school of library science following her graduation as an English and education major. In addition to being a four year choir member, Joyce has worked in the library and on the *Hermes* staff, participating also in the History Club.

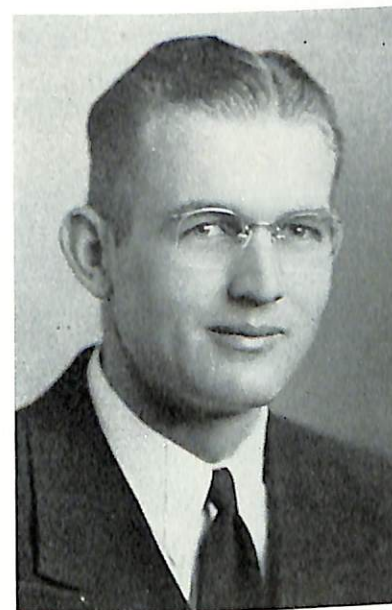
TREASURER



James A. Stone
Avoca, Iowa

During his four years at Dana, Jim has been active in the History Club, an officer of the LSA, and an associate editor of the *Danian*. As a junior, he was president of the student body. This year he was Homecoming chairman and the head of the constitution revision committee. A prospective teacher, Jim majored in history.

Several precedents were established this year by the senior class under the able leadership of its president. "Days of Old Dana," held in March, was a social success and also secured additional funds for the class gift to the college. The seniors assumed responsibility for the class night program that will be continued in the future as a regular feature of commencement week. Because their education was disrupted by war service, several members of the class are first semester seniors and will return next year to complete work for a degree.



Norman C. Bansen
Ferndale, California

Graduate study and teaching are in store for Norman, an English major who has held responsible extra-curricular offices each of his four years at Dana. As a freshman, he was president of the LSA and the following year he held the post of *Hermes* editor. Student body president and *Danian* editor occupied his junior and senior years respectively.



Anne Lage Andersen
Omaha, Nebraska

A major in commerce and journalism, Anne has been active in choir and LSA. She served as secretary of the Literary Club and associate editor of the *Hermes* as well as instructor in journalism. On December 19, 1946, she married Harold Andersen, student body president.



Rhoda S. Carlsen
Blair, Nebraska

Rhoda has sung in the A Cappella Choir every year that she has been at Dana. She also played in a string ensemble, served on the *Hermes* staff and was secretary of the student body during her sophomore year. Her major has been education.



SENIORS



Audrey A. Eastlund
Albert Lea, Minnesota
Audrey has been a member of the American - Scandinavian Foundation, Dramatics Club, WAA, the *Hermes* staff and was business manager of the 1947 *Danian*. Mrs. Eastlund was in the WAVES for one and a half years. With aspirations for an M.S. degree, she is majoring in commerce and mathematics.

Marilyn J. Guyer
Blair, Nebraska
Marilyn was active in the Dramatics Club and WAA and a member of the *Danian* and *Hermes* staffs. She has been assistant in the chemistry and zoology lab. Marilyn will enter the Lincoln Memorial Hospital in June for an additional year of training in medical technology. Chemistry and biology are her majors.



Elizabeth J. Hansen
Aurora, Nebraska
A member of the Dramatics Club, WAA and History Club, Betty has been kept busy by attending summer school three years. She was associate editor of the 1947 *Danian*. Blair seventh and eighth grade girls have had Betty as physical education instructor this past year. She is an English major.



Hughie Hughes
Decatur, Nebraska
The football team, of which he was an honorary co-captain this year, has claimed a lot of Hughie's attention during his years at Dana. He has been a member of the D Club, Dramatics Club, and has participated in peace oratory. Hughie, husband and father, majored in math and will teach.



SENIORS



Allan W. Hansen
Elk Horn, Iowa
An active member of the Dramatics Club, LSA, male chorus, choir, American-Scandinavian Foundation and the History Club, Allan is a commerce major. Married, he will enter the educational field as an instructor in high school.

Allison A. Hansen
Kansas City, Kansas
Allison was president of the choir, as well as literary editor of the *Danian* in '45-'46. He is best known as the manager of the college canteen. This year he served as president of the LSA. As a foundation for his future in the ministry, Allison is majoring in social service.



Paul C. Larsen
Chicago, Illinois
Paul, who has been a member and officer of the Dramatics Club, was a *Hermes* reporter as a freshman and this year edited the *Hermes*. 'Parson,' a recent father, will do additional college work next year before entering the seminary. He is majoring in history and English.



G. Gene Megrue
Tekamah, Nebraska
Enthusiasm and ability in football and basketball won Gene the distinction of being honor athlete in 1942 and football co-captain this year. As yet undecided as to his future occupation, Gene is a business major.



SENIORS



Lorraine A. Nelsen
Albert Lea, Minnesota

Following her freshman year at Dana, Lorraine entered and completed nurses' training at Immanuel Hospital in Omaha. She returned to Dana in '45-'46 as school nurse and also to work for her B.S. degree, with a major in biology. She will begin teaching at Immanuel School of Nursing in Omaha next September.

Glenn E. Neve
Ringsted, Iowa

Working for economics and history majors, Glenn will be back at Dana next fall to complete his work. This year he was sports editor of both the *Danian* and the *Hermes*. During previous college years he participated in choir, male chorus, and History Club.



John W. Nielsen
Albert Lea, Minnesota

John is the Midwest Regional LSA president and has held office in the local chapter. Formerly an officer in Dramatics Club and editor of the *Hermes*, John was *Sower* editor and a member of the student council during the current year as well as a third year D Club member. He has majored in English and History.

Myrna M. Olsen
Poy Sippi, Wisconsin

Myrna transferred to Dana from Waushara County Normal School in 1945. A major in music and education, she was best known for her ability at the piano and was a choir member her junior year. She served as dormitory president the first semester of her senior year.

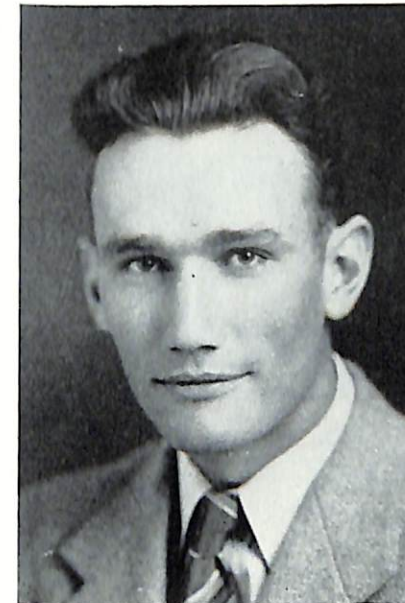


Reynold H. Tange
Hutchinson, Minnesota

Reynold is a pre-sem student and has a history major. Extra-curricular activities have included choir, male chorus, *Hermes*, peace oratorical contest as well as LSA officer and president of History Club this year. Reynold is married and has a daughter.

GRADUATE STUDENTS

Although graduate degrees are not granted, no less than five students were registered this year for post-graduate study. Four members of the group had degrees from other colleges, but chose Dana for an additional year of study.



F. Lowell DeVasure
Tekamah, Nebraska
B.A., *Doane College*



Thorkild V. Kastrup
Laurel, Nebraska
B.A., *University of Washington*



Gordon Lewis
Blair, Nebraska
B.A., *Dana College*



Harriet Lohr-Olsen
Big Timber, Montana
B.S., *Montana State College*



Ordell M. Olson
Northfield, Minnesota
B.A., *St. Olaf College*

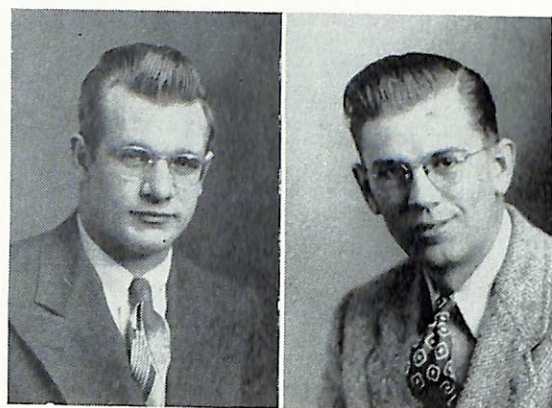
TRINITY THEOLOGICAL

SEMINARY

Four students receive their Bachelor of Divinity degrees from Trinity Seminary this year and will be ordained in June at the annual convention of the United Evangelical Lutheran Church for their life work as pastors.

Stanley Carlsen, senior, was president of the Trinity Theological Seminary Student Association during the past year. Ejvind Nielsen served as secretary and Russell Wilson held the position of treasurer.

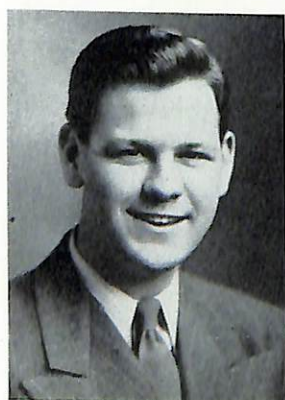
JUNIORS



Jack E. Jacobsen
Racine, Wisconsin

James W. Olsen
Kenmare, North Dakota

MIDDTLERS



William J. Hanson
Chicago, Illinois



Homer A. Larsen
Westbrook, Maine



Ejvind H. Nielsen
Standard, Alberta



M. Russell Wilson
Bison, South Dakota

SENIORS



Stanley L. Carlsen
Blair, Nebraska

Stan has accepted a call from St. Thomas Lutheran Church, Trufant, Michigan. A versatile college student, he edited the *Danian* his sophomore year and was editor of the *Hermes* the next year, in addition to being LSA president.



Donald T. Hansen
Greenville, Michigan

Although Don attended Dana for only two of his college years, he was LSA vice-president during his freshman year and president the following year. He will serve Bethany Lutheran Church, Pasadena, California.



Oscar E. Johnson
Blair, Nebraska

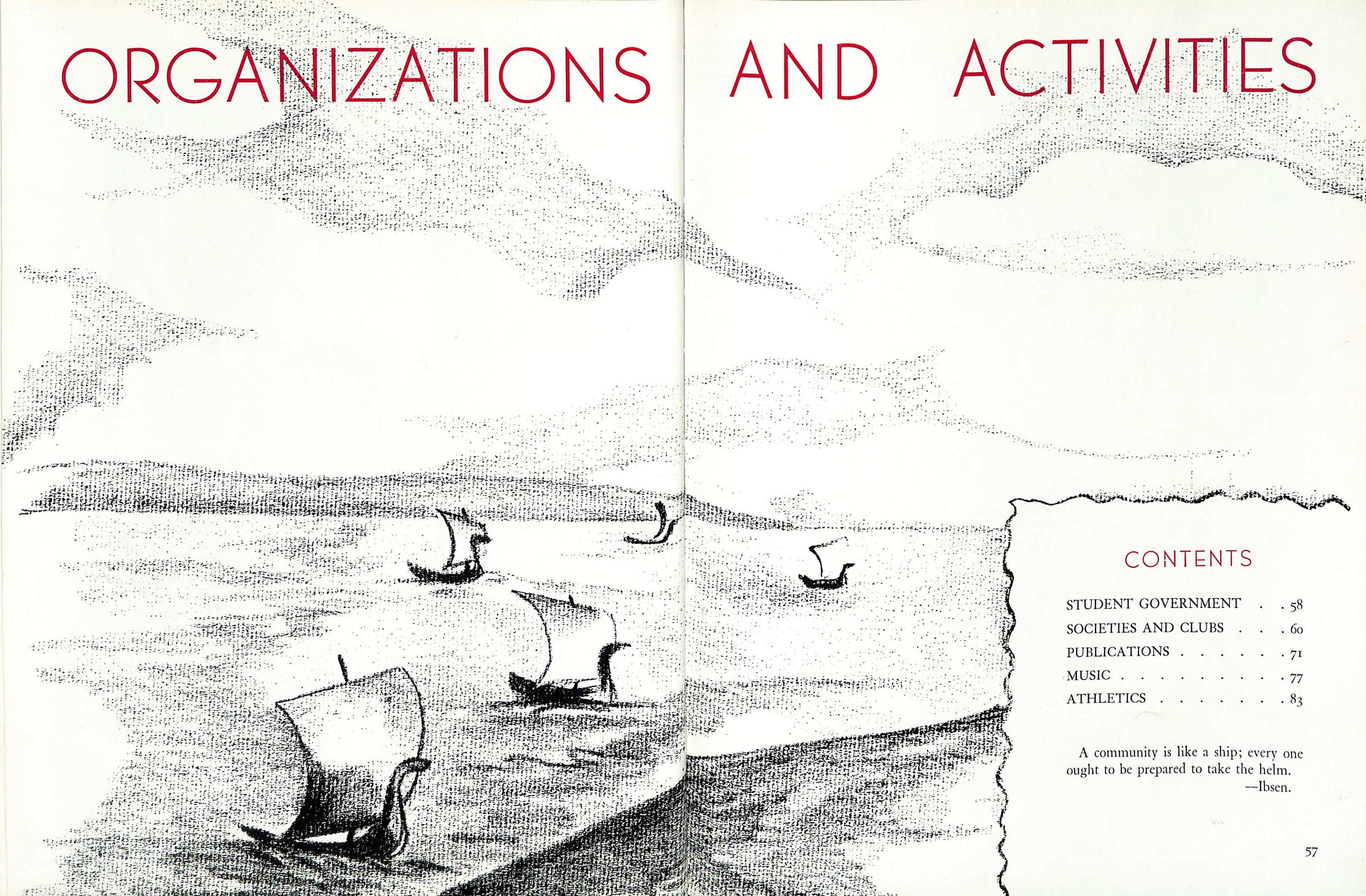
Oscar has accepted the call of Salem Lutheran Church, Brooklyn, to serve as associate pastor following his ordination. During his college years, he was president of both LSA and History Club, and served as Homecoming chairman in 1944.



Lloyd R. Neve
Sleepy Eye, Minnesota

Before going to Japan as a missionary, Lloyd plans to do graduate work. At present, he is national LSA president and previously served two years as regional president. He has been editor of both *Hermes* and *Danian*, and student body president.

ORGANIZATIONS AND ACTIVITIES



CONTENTS

STUDENT GOVERNMENT	58
SOCIETIES AND CLUBS	60
PUBLICATIONS	71
MUSIC	77
ATHLETICS	83

A community is like a ship; every one
ought to be prepared to take the helm.
—Ibsen.

STUDENT GOVERNMENT



Harold Andersen
Student Body President

THE UNITED STUDENT BODY

Carrying on a constructive program of greater activity geared to the needs of the largest student body in the history of the college, the 1946-47 student organization redecorated the reception room in the Men's Dormitory, providing space for additional recreational activity, and began the reconversion of the gymnasium basement into a recreational center. These projects were financed by student fees and contributions from congregations and Luther Leagues of the synod. The student council sponsored the organization of several new clubs.

STUDENT COUNCIL

The student council includes the president, secretary, treasurer, and the directors of student activities. Seated: Marilyn Juul, secretary; John Nielsen, literary director; Harold Andersen, president; Archie Madsen, religious director; Forrest Leighton, treasurer. Standing: Richard Videbeck, social director; Philip Larsen, recreational director; Robert Videbeck, music director.



John Nielsen, Elizabeth Hansen, James Stone, Florence Hansen, William Pearson.

CONSTITUTION REVISION COMMITTEE

Under the chairmanship of James Stone, president of the 1945-46 student body, the revision committee, after careful analysis of other student government constitutions, prepared a revised constitution that was adopted by the student body in March.



First row: Florence Hansen, religious director; Ivadell Raben, vice-president. Second row: Miss Ella Hansen, Dean; Elsie Jensen; Eunice Petersen, secretary; Dolores Jensen, president. Standing: Joan Andersen, Marilyn Neve.

WOMEN'S DORMITORY COUNCIL

Functioning with the dean of women, the council drew up regulations for the year and endeavored to enforce dormitory rules. Dormitory problems were considered by this group. Late in the first semester Myrna Olsen, then serving as council president, resigned because of illness.

SOCIETIES AND CLUBS

Increased enrollment gave new impetus to organizations already existing and resulted in the formation of several new clubs and the reactivation of other groups. Under student council supervision and with the co-operation of the faculty, five new organizations were formed.

Clubs vary in size from those with less than a dozen members to the large D Club, WAA, and LSA. The latter organization includes the majority of students as members.

DRAMATIC CLUB

OFFICERS

President
Vice-president
Secretary-treasurer
Advisor

Mariane Lund
Elizabeth Hansen
John W. Nielsen
Louise Woepfel



First row: Virgil Anderson, Paul Larsen, Norman Hansen, James Hansen, Niels Carlsen, Paul Simon. Standing, first row: Pauline Clausen, John Nielsen, Mariane Lund, Elizabeth Hansen, Ordell Olson. Second row: Arnold Larsen, Ivadell Raben, Lois Andersen, Marilyn Guyer, Glennis DeVasure, Virginia Petersen, Harriet Mortensen, Margaret Peterson. Second row: Robert Laursen, Donald Hundtoft, Margaret Madsen, Rhoda Jacobsen, Shirley Holman, Dorothy Seybold, May Skobo, Carol Mengers.

Plays were presented at frequent intervals during the year by the Dramatic Club. A one-act mystery, "Opening of the Door," and a comedy, "For Whom the Telephone Rings," started student dramatists on their way.

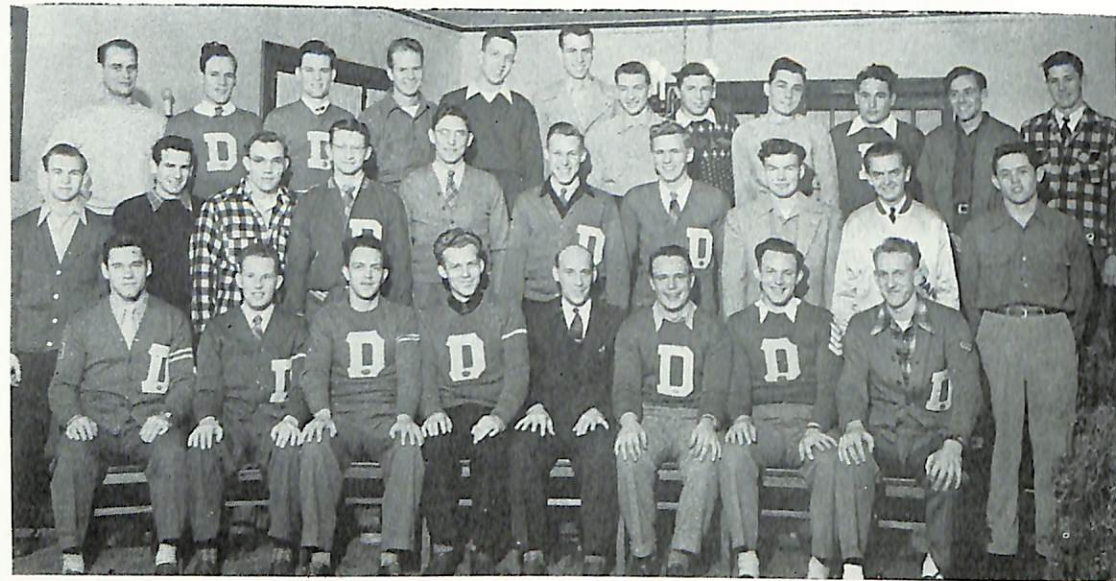
Dickens' "A Christmas Carol" was presented in December and the drama "Highness" opened the spring season. Climaxing the dramatic calendar was the three-act comedy, "Where There's a Will," by Charles George.

Mariane Lund succeeded Robert Videbeck as president of the group after his resignation at the end of the first semester.

D CLUB

OFFICERS

President	Lawrence Nelsen
Vice-president	Howard Jensen
Secretary-treasurer	Maynard Andersen
Members, Executive Committee	Raymond Hansen
	Hughie Hughes
	Gene Megrue
Advisor	Paul Peterson



First row: Arthur Sorensen, Forrest Leighton, Maynard Andersen, Lawrence Nelsen, Coach Paul Peterson, Howard Jensen, Gene Megrue, Raymond Hansen. Standing, first row: Norman Hansen, Dean Madsen, Donald Schou, James Hansen, Archie Madsen, Norlan Hanson, John Nielsen, Willis Johansen, Donald Christensen, Clifton Robinson. Second row: Oliver Poulson, Donald Rouse, Jack Megrue, Darrel Wilson, Howard Petersen, James Youmans, Duane Farrens, Richard Zimmerman, Marvin Grandy, Jack Jensen, Del Neary, Philip Larsen.

Membership in the D Club is limited to those holding letters in the major sports. This year, as a tribute to former Vikings who gave their lives in World War II, an electric scoreboard was placed in the gymnasium by this organization. Funds were secured through contributions and the sale of refreshments at athletic events during the year. One of the club's major activities was the co-sponsorship of "Lilac Time" with the W.A.A.

W. A. A.

OFFICERS

President	Joan Andersen
Vice-president	Dolores Jensen
Secretary-Treasurer	Jeanette Christensen
Recording Secretary	Maryann Nelson
Finance Chairman	Marjorie Jorth
Social Director	Ivadell Raben
Publicity Chairman	Jeraldine Johnson
Advisors	Paul Peterson
	Marie Tucker



First row: Elna Nielsen, Lorraine Nelson, Marilyn Neve, Esther Hertz, Betty Schmidt, Ivadell Raben, Dorcas Vammen, Joan Andersen, Jeraldine Johnson, Maryann Nelson, Janice Kruse. Second row: Patricia Quist, Betty Jeppesen, Lois Andersen, Dorothy Seybold, Janice Nygaard, Elsie Jensen, Glennis DeVasure, Margaret Peterson, Edna Jensen, Virginia Petersen, Mary Lindholm. Standing, first row: Fern Peterson, Mary Skobo, Asta Larsen, Marilyn Guyer, Marilyn Juul, Mariane Lund, Harriet Lohr-Olsen, Margaret Madsen, Ella Thomsen, Rhoda Jacobsen, Dolores Jensen, Abbie Vaughan, Karen Hansen, Pauline Clausen, May Skobo, Leona Christensen. Second row: Helen Marcussen, Rhoda Johansen, Rhoda Iversen, Dorothy Paulsen, Joyce Nelson, Elizabeth Hansen, Esther Madsen, Esther Rasmussen, Eunice Petersen, Arlene Rudolph, Shirley Holman, Colleen Johnson, Jeanette Christensen, Lorraine Christensen.

The Women's Athletic Association was among the more active groups socially during the school year, sponsoring the formal Christmas party and co-sponsoring "Lilac Time" with the D Club.

To obtain a W.A.A. letter, the girls are required to hike a total of fifty miles during the school year, in addition to participating in intramural athletics.

LUTHERAN STUDENT

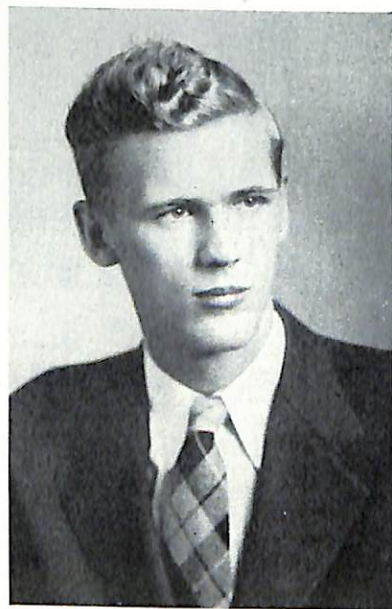
NATIONAL PRESIDENT



Lloyd R. Neve



REGIONAL PRESIDENT

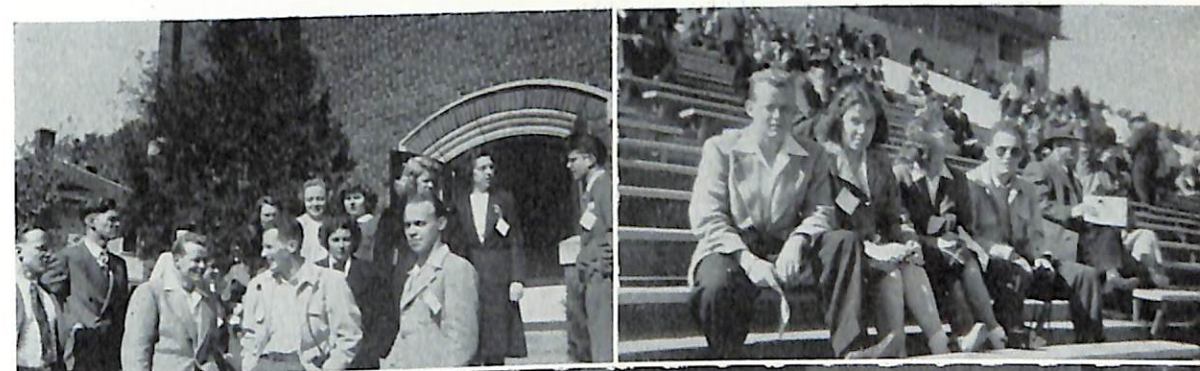


John W. Nielsen

Lloyd Neve, senior at Trinity, is the national president of the Lutheran Student Association of America and John Nielsen, senior at Dana, is the regional president. This is the second time that a student from this campus has been national president. Rev. Edwin Svendsen of Washington Island, Wisconsin, held this position in 1943-1944. Neve and Svendsen also held the post of regional president.

ASSOCIATION OF AMERICA

The Dana delegation at the October regional conference, Kansas U, Lawrence, Kansas.



Dana LSAers were Palm Sunday breakfast guests of the Midland chapter in Fremont's Pathfinder Hotel.



In addition to the regular weekly meetings the Dana Chapter arranged for groups of students to visit the congregations in the vicinity, presenting the gospel to the people in music and in talks. The organization was also host to the National Luther League Convention and canvassed the Blair Apartments section of the city for the local congregation. A number of students attended the regional conference at Lawrence, Kansas, in October and in May attended the Little Ashram at Camp Brewster near Omaha. Several members plan to attend the National Ashram in California this summer.

1946-'47 OFFICERS

First row: Marjorie Jorth, Paul Simon, Elizabeth Solevad, presidents. Second row: Eunice Petersen, Virgil Bollesen, Marjorie Nelson, Ried Neve, Paul Johnsen, Ordell Olson, Karen Hansen.



AMERICAN-SCANDINAVIAN FOUNDATION

DANA CHAPTER

OFFICERS

President
Vice-president
Secretary
Treasurer

P. C. Nyholm
Norman C. Bansen
Audrey A. Eastlund
M. J. Widman



Open to all who are interested in maintaining a bond of friendship between the United States and Scandinavia, the Dana Chapter of the American-Scandinavian Foundation includes on its membership roll faculty members and a number of Blair residents as well as students. The main purpose of the organization is to develop an interest in the cultural and scientific heritage of Scandinavia.

Prof. P. C. Nyholm addressed the first meeting of the local chapter, presenting a biographic sketch and analysis of the dramas of the martyred pastor-dramatist, Kaj Munk. Norman Bansen spoke at a later meeting on his experiences in Serampore, former Danish colony in Bengal. In March the organization sponsored a program and evening of informal entertainment during the visit of the Danish Gymnastic Team.

HISTORY CLUB

OFFICERS

President
Vice-president
Secretary
Treasurer
Advisor

Reynold Tange
Raymond Paulsen
Elizabeth Hansen
Florence Hansen
H. F. Swansen



Stimulating interest in history, both current and past, is the objective of the History Club, one of the oldest organizations on the campus. Besides its annual program, which included a one-act play, "The Lost Letter," the group sponsored two round-table discussions, one on Europe and Africa, the other on China, India, and Burma. Veteran students who had been in these theaters of war participated.

A lecture on archeology by Dr. O. W. Qualley of Luther College in Decorah, Iowa, was sponsored by the History Club in April.

FINE ARTS CLUB

Promoting interest in the fine arts and in classical music is the main purpose of the Fine Arts Club. James Hansen served as chairman of the music committee and Ivadell Raben acted as chairman of the art division. The meetings included a talk by Professor Widman and a talk by Jack Jacobsen on Beethoven.

OFFICERS
 President Maynard Andersen
 Secretary Elna Nielsen
 Advisors M. J. Widman
 Paul Neve
 F. William Thomsen



OFFICERS
 President Alvina Larsen
 Secretary Marjorie Jorth
 German President Fred Brengelman
 Spanish President Virginia Petersen
 French President Don Poh
 Advisors O. F. Bale
 Louise Bale



Fostering interest in the cultural, economic, and social aspects of languages is the purpose of the Language Club. The three separate divisions promote interest in the literature and culture of the particular language. Movies and games in the languages have also been featured.

LANGUAGE CLUB

SCIENCE CLUB

Individual projects in nutrition, genetics and plant experimentation are included in the program of the newly organized Science Club. The group has attempted to stimulate thought on scientific topics and events through frequent discussions. Talks on a variety of topics including astronomy and cancer made up the programs.

OFFICERS
 President Harold Jersild
 Vice-president Eugene Mengers
 Secretary Elsie Jensen
 Advisors Marie Tucker
 F. W. Hengeveld
 R. L. Moenter



OFFICERS
 President Peter Thorslev, Jr.
 Vice-president Holger Christensen
 Secretary-Treasurer Anne L. Andersen
 Advisors Nellie Falk
 Louise Woeppel

The Literary Club is an organization of those interested in literature and the art of writing. Its two meetings a month are devoted to a discussion of recognized literature and to criticism of the original writing of student members. At the annual program in May, an original play by Robert Videbeck was staged.

LITERARY CLUB

HOME ECONOMICS CLUB

OFFICERS

President
Secretary-Treasurer
Advisor

Virginia Petersen
Amy Andersen
Ordell Olson



The Home Economics Club was organized early in the second semester to further an interest in the different aspects of home-making. A program of knitting, home nursing, table setting, and interior decoration was followed by the group.

Another objective of the organization, that of assisting in college activities, was partially realized in a hospitality program for the Danish gymnasts. The group also served occasionally at other functions.

A number of picnics, teas, and dinners were held during the spring months.

PUBLICATIONS

Dana's publications have enjoyed a boom year as a result of the increased student body membership. Circulation of the *Hermes*, the *Sower*, and the *Danian* has reached an all-time high.

All three publications are financed mainly by student subscription and local advertising, with students in charge of all phases of editorial work. Printing is done locally at Lutheran Publishing House.

During the first semester members of the *Hermes* and *Danian* staffs remodeled a room on Old Main's fourth floor. This office will serve as joint headquarters for college publications until such a time as more space is available.



Paul Larsen
Editor

HERMES

THE MESSENGER FROM DANA

Returning to its pre-war standard of an issue every two weeks, the 1946-1947 *HERMES* under the editorship of Paul C. Larsen became a vital part of student life. Regular circulation for the *HERMES* was about 800, with some issues being printed in 1200 copies. One issue reached a record circulation of 2000.

The *HERMES* attempted to present the news in a fair and honest way, and frequently was the "sounding board" for student reaction to certain activity on and off the campus.

As is customary, the freshman class and the journalism class were again each responsible for one issue.

Associate editors Anne L. Andersen and Dolores Jensen checking copy with sports editor Glenn Neve.



THE HERMES STAFF

Editor
Associate Editor
Associate Editor
Sports Editor
Religious Editor
Photography
Typists

Business Manager
Circulation Manager
Advisor

Paul C. Larsen
Anne L. Andersen
Dolores Jensen
Glenn Neve
Archie Madsen
Richard Videbeck
Elizabeth Hansen
Edna Jensen
Harriet Lohr-Olsen
Allan Hansen
Harold Johnson
Nellie F. Falk

Seated: Niels Carlsen, Archie Madsen, Glenn Neve, Dolores Jensen, Paul Larsen, Anne Lage Andersen, Allan Hansen, Harold Johnson. Standing, first row: Maryann Nelson, Audrey Eastlund, Elna Nielsen, Marjorie Nelson, Paul Simon, Edna Jensen, Elizabeth Hansen, Carol Mengers. Second row: Richard Videbeck, Alice Romer, Reynold Tange, Ried Neve, Holger Christensen, Harriet Lohr-Olsen. Third row: Patricia Quist, Betty Schmidt, Lois Andersen, Robert Videbeck, Alvina Larsen.





Norman C. Bansen
Editor

THE DANIAN

When the last copies of the 1947 *Danian* left the printer, they had a story of labor behind them. In addition to writing, layout, advertising, and other similar routine problems, well-publicized sales campaigns were conducted on the campus.

The editor kept campus cameras busy and also used the services of professional photographers. The staff photographer's dark room was often busy far into the night. The result of this labor is a more pictorial *Danian*.

An increased enrollment made a larger annual imperative. Despite the rising cost of printing, it was decided to print the book in two colors on a superior quality paper. The work of the advertising staff made this possible.

Staff artist Elizabeth Solevad and associate editors Elizabeth Hansen and Paul Simon at work in the Danian office. Roger Hansen and Harry Andreassen assist staff photographer Richard Videbeck in the dark room. Audrey Eastlund, business manager, confers with advertising manager Howard Petersen and circulation manager Alvina Larsen.



1947 DANIAN STAFF

Editor	Norman C. Bansen
Associate Editors	Elizabeth J. Hansen, Paul Simon
Editorial Assistants	Dolores Jensen, Carol Mengers Eleanor Nielsen, Robert Videbeck
Sports Editor	Glenn Neve
Staff Photographer	Richard Videbeck
Assistant Photographers	Harry Andreassen Roger Hansen, Mark Viere
Staff Artist	Elizabeth Solevad
Business Manager	Audrey Eastlund
Advertising Manager	Howard Petersen
Advertising Assistants	James Coffey, Elsie Jensen Mariane Lund, Dean Madsen, Ruth Solevad
Circulation Manager	Alvina Larsen
Circulation Assistants	Pauline Clausen, Anton Kirkegaard
Typists	Harriet Lohr-Olsen, Ella Thomsen
Advisor	Nellie F. Falk

Seated: Audrey Eastlund, Alvina Larsen, Howard Petersen, Paul Simon, Norman Bansen, Elizabeth Hansen, Richard Videbeck, Elizabeth Solevad. Standing: Russell Wilson, Dean Madsen, Betty Schmidt, Anton Kirkegaard, Harriet Lohr-Olsen, Dolores Jensen, Pauline Clausen, Mariane Lund, Robert Videbeck, Glenn Neve.



THE SOWER

Published for the first time since 1942, the 1947 *Sower* contained an anthology of the best writing of Dana students. Work was begun on the anthology early in the first semester under the editorship of John W. Nielsen and his assistants, Fred H. Brengelman, Patricia J. Quist and Alice L. Romer. Selections were made from work submitted by individuals and for the entire production of the composition classes. Many points of view and all classes are represented in this year's *Sower*, making it a magazine of unusual interest.

STAFF OF THE 1947 SOWER

Editor John W. Nielsen with associates Alice L. Romer, Fred H. Brengelman, and Patricia J. Quist.



MUSIC

Two tours to Europe and one extensive tour of the Pacific coast have made the A Cappella Choir the most widely known of Dana's musical organizations. Students who do not qualify for choir have the opportunity to participate in other smaller musical groups and to sing in the mass choruses for the annual Christmas presentation of "The Messiah" and a spring choral work, this year "The Hymn of Praise."

Music is a vital part of life at Dana and informal groups frequently gather around a piano for a "songfest" or harmonize in the canteen. In addition to providing recreation and entertainment for students, this interest in music has given new depth to spiritual life on the campus.

THE A CAPPELLA CHOIR



First row: Rhoda Carlsen, Esther Hertz, Jeraldine Johnson, Arlene Rudolph, Janice Nygaard, Dolores Jensen, Mary Skobo, Joyce McLeod, Marilyn Neve, Janice Kruse. Second row: Joan Andersen, Carol Mengers, Ferne Petersen, Betty Hansen, Alice Romer, Eunice Peterse, Florence Hansen, Rhoda Iversen, Marjorie Nelson, Mildred Guyer. Third row: Elmer Petersen, Peter Thorslev, Arthur Sorensen, Willis Olson, Harriet Lohr-Olsen, Margaret Madsen, Fred Jensen, Virgil Bollesen, Paul Johnsen. Fourth row: Jack Krogh, Paul Simon, Roger Hansen, Donald Jensen, Ried Neve, James Hansen, Howard Hansen, Arnold Larsen, Donald Poh.

The 1947 Dana College A Cappella Choir under the direction of Professor Paul Neve had one of its most successful seasons, receiving high praise from eminent music critics. Selections ranged from Brahms' "A Saving Health" to Sergei's "My God and I."

The 2200 mile tour began Tuesday morning, March fourth, when a sleek, silver bus drove away from the Dana campus heading towards Cedar Falls, Iowa.

Then . . . Gardenias and carnations . . . Snow in Michigan . . . Glee in the Glee Club Hall . . . "Congratulations" . . . Janice gets a "diamond" . . . Maynard of Milwaukee . . . Johnson's Wax offices . . . "Coffeetime" Thorslev . . . Bowling in Madison . . . Concert in Green Bay . . . Myrna at Poy Sippi . . . 6:00 a.m. in Oshkosh . . . "There's a Dana car" . . . "While yet our land was wilderness . . ."

Norlan Hanson was elected president following the resignation of Archie Madsen early in the second semester. Alice Romer was secretary and Virgil Bollesen was treasurer.

CHOIR SANG IN FOUR STATES DURING 1947 CONCERT TOUR

March 4	Cedar Falls, Iowa
March 5	Clifton, Illinois
March 6	Edmore, Michigan
March 7	Greenville, Michigan
March 9	Chicago, Illinois
March 10	Kenosha, Wisconsin
March 11	Racine, Wisconsin
March 12	Milwaukee, Wisconsin
March 13	Hartland, Wisconsin
March 14	Oregon, Wisconsin
March 16	Waupaca, Wisconsin
	Green Bay, Wisconsin
March 17	Poy Sippi, Wisconsin
March 18	Oshkosh, Wisconsin

Additional Concerts

February 23	Moorhead, Iowa
May 11	Fremont Bluffs, Nebraska
May 18	Omaha, Nebraska
June 1	Blair, Nebraska



Choir leaves Dana.
Northwestern University, Evanston, Illinois.
Edmore, Michigan.

Stand committee at Madison, Wisconsin.

Highways were happy ways.





Front row: Maryann Nelson, Harriet Mortensen, Elna Nielsen, Virginia Petersen, Professor Melvin Widman, Mary Lindholm, Beverly Hill. Back row: Dorcas Vammen, Rhoda Johansen, May Skobo, Esther Rasmussen, Ella Thomsen, Mariane Lund, Harriet Lohr-Olsen, Helen Marcussen, Dorothy Seybold, Pauline Clausen.

WOMEN'S GLEE CLUB

Under the direction of Professor M. J. Widman, the Women's Glee Club appeared at the Homecoming *Kaffebord* program in the fall, the History Club's February program, and the evening program at which the Danish Gymnasts were guests.

The repertoire of the chorus ranged from religious to lighter secular numbers.

PRIVATE INSTRUCTION

Many students take advantage of private instruction offered in voice, pipe organ, and piano. The music department is headed by Professor Paul Neve, who is also instructor in pipe organ. Other instructors are Professors M. J. Widman, Louise Woeppel, Dorothy Widman, and, during the first semester, Ruth Blanchard.



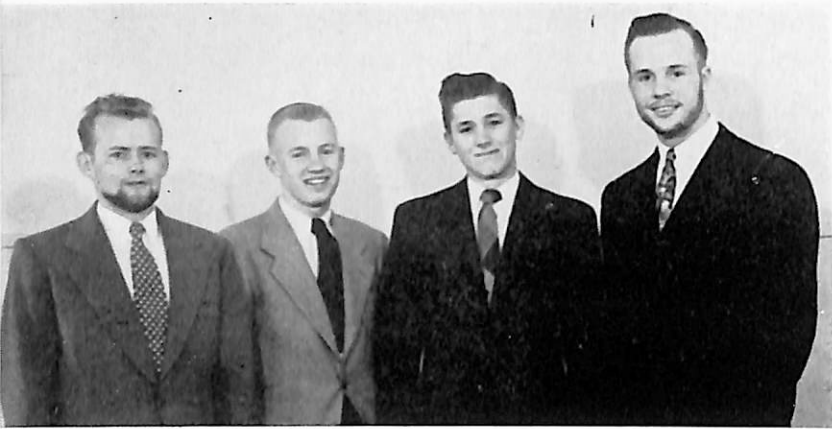
Asta Larsen, Professor Paul Neve.

STRING ENSEMBLE

One of the few instrumental groups on the campus, the string ensemble was in great demand for college festivities. The ensemble played for the Homecoming *Kaffebord* and the Christmas banquet.

Elna Nielsen, Mary Lindholm, Robert Videbeck, Maryann Nelson, Arthur Christiansen.





Niels Carlsen, Elmer Petersen, Philip Larsen, Harold Jersild.

MALE QUARTET

Appearing at more school functions than any other small musical group, this a cappella quartet sang selections that ran the gamut from sacred music to light modern music.

MIXED QUARTET

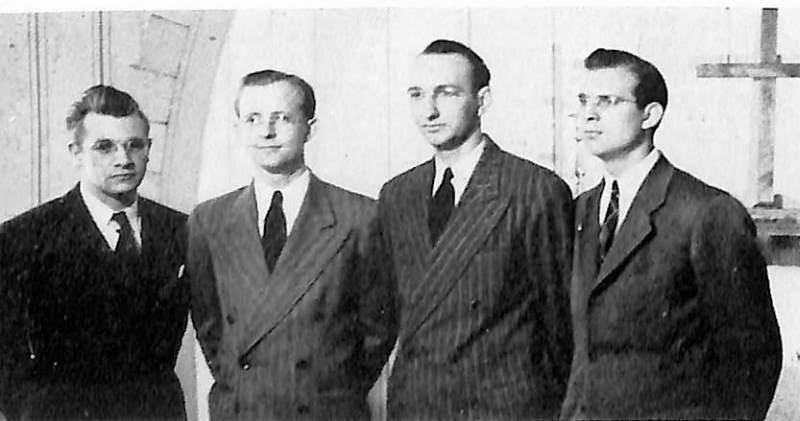
This quartet drew its talent from the Dana Choir and frequently sang at programs following choir concerts as well as at school functions. The repertoire included sacred and semi-classical music.



James Hansen, Eunice Petersen, Rhoda Iversen, Arthur Sorensen, Marilyn Neve, accompanist.

SEMINARY QUARTET

The Trinity Seminary quartet presented programs with a definite Christian message in churches of the vicinity and also sang at campus religious programs.



Jack Jacobsen, Stanley Carlsen, Donald Hansen, Lloyd Neve.

ATHLETICS

Dana was a member of the newly organized Nebraska Intercollegiate Conference along with McCook, Fairbury, Norfolk, Concordia, Nebraska Central and Luther. Through active participation in this athletic conference Dana gained valuable publicity and acquired the respect of other member schools. Dana was represented in this conference by football, basketball and track teams.

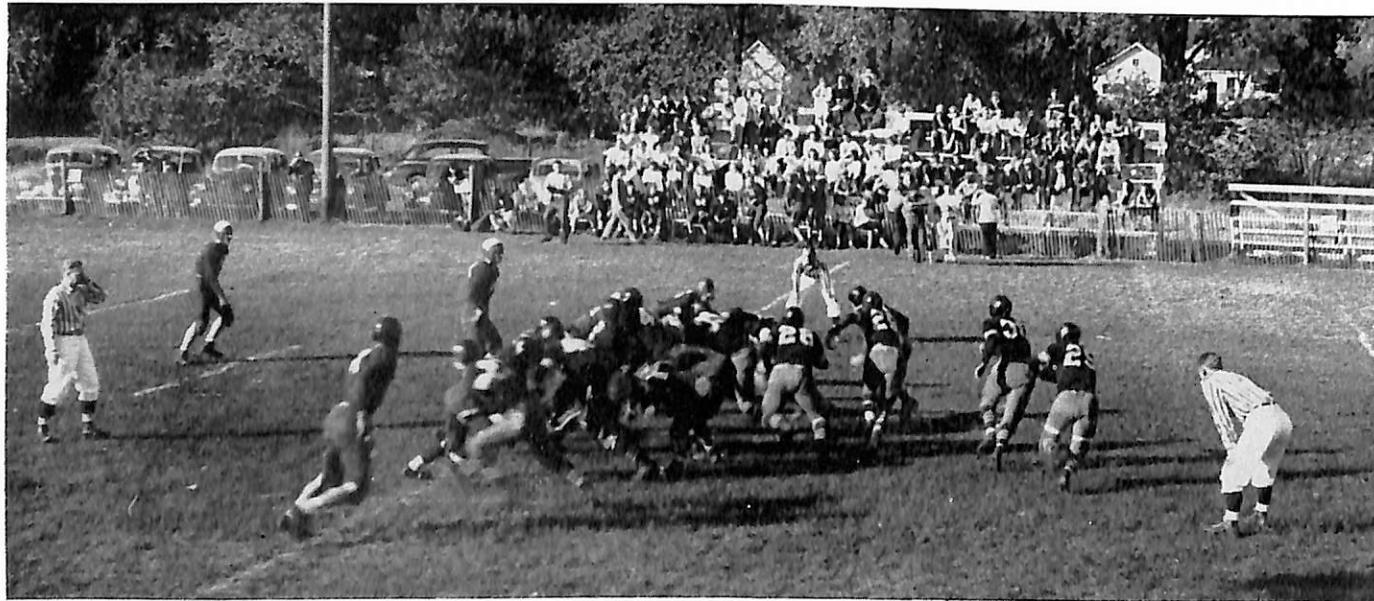
Although the won and lost records of the Vikings were not too impressive, Dana did field excellent teams. Competition was tough but much valuable experience was gained during the year. With this experience and an increasing enrollment bringing also an increasing number of outstanding athletes to our school, Dana looks forward to prosperous athletic seasons.

FOOTBALL

Football fans were treated to what was undoubtedly one of the most exciting seasons in Dana's history. Early season games found a potentially superior Dana team playing mediocre ball. The Viking team grew more and more powerful, however, as the season progressed and finished a respectable third in the college conference. By season's end Dana was rated as the most improved team in the league. Her main strength lay in her offensive ground attack, which, coupled with a better than average passing attack, enabled Dana to outscore her opponents 130 to 53. Art Sorensen of Des Moines and Neil Stanley of Blair represented Dana on the Omaha World Herald All-Conference team.

Highlight of the season was a 20-20 game with the conference champion Fairbury team in which Art Sorensen all but ran Fairbury out of the title.

It's Dana versus Concordia and it looks like the play will go around right end. Viking gridmen pictured are Jack Jensen, 28, Duane Farrens, 29, Maynard Andersen, 30, and Art Sorensen, 25.



First row: Gene Megrue, Howard Jensen, Neil Stanley, Bud Robinson, Bob Parker, Jack Jensen. Second row: Del Neary, Bill Tripp, C. J. Robinson, Reuben Petersen, Jack Emmons, Burl Madsen, Dale A. Petersen, Norman Hansen, Forrest Leighton. Third row: Niels Carlsen, Richard Zimmerman, Art Sorensen, Merle Nielsen, Don Rouse, Dean Madsen, Duane Farrens, James Coffey, Hugh Hughes. Fourth row: Oliver Paulson, Marvin Grandy, Jack Megrue, Maynard Andersen, James Hansen, Darrell Wilson, Irwin Christensen, Bill Johansen. Fifth row: John Hansen, Charles Knutsen, Jim Youmans, Archie Madsen, Donald Schou and Lawrence Nelsen.



Viking Don Rouse reels off a first down against Nebraska Central.

Gene Megrue, 32, and Jack Jensen, 28, lead interference for back Art Sorensen as he breaks through the Fairbury line for a 37-yard touchdown sprint.





Co-Captain Hugh Hughes, Coach Paul Petersen, Co-Captain Gene Megrue.

FOOTBALL

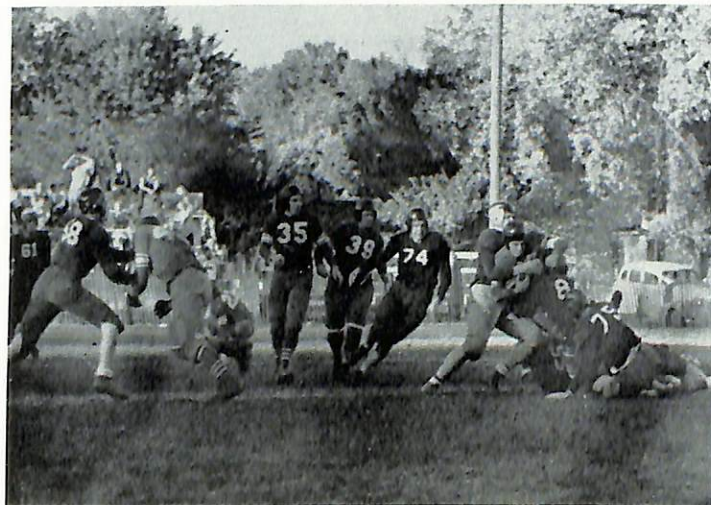
Characteristic of the Dana attack was the single wing and unbalanced line formation. Statistically Dana ran away with her opponents. In every department they earned a statistical advantage, made possible chiefly through Herculean performance of a strong, dependable line.

STATISTICS

	<i>Dana</i>	<i>Opponents</i>
Scoring	130	53
1st Downs	99	46
Yards Rushing	1412	728
Yards Passing	550	376
Pass Percentage	44%	33%



Fullback Irv Christensen hits the center of the Luther line for five more yards.



Art Sorensen meets a host of Luther tacklers. Howie Jensen, 40, Don Schou, 35, and Hughie Hughes, 39, follow the play.

GAMES

DANA	6	Nebraska Central	6
DANA	2	McCook	7
DANA	6	Norfolk	13
DANA	44	Luther	7
DANA	18	Concordia	0
DANA	34	Luther	0
DANA	20	Fairbury	20
DANA	0	Nebraska Central	0

VIKING PEP



CHEER LEADERS Esther Hertz, Elmer Petersen, Mariane Lund.

The Viking pep organizations added sparkle and zest to the football and basketball seasons. Directed by James Olsen, the Pep Band played at most home games. Dana's three yell leaders were in charge of the several pep rallies and, in red and white uniforms, added enthusiasm to the contests. Allan Jorgensen was a fourth member of the group during the first semester.

First row: Jeraldine Johnson, Joan Andersen, Betty Lou Jeppesen, Pauline Clausen, Helen Marcussen. Second row: James Olsen, Rhoda Johansen, Harriet Mortensen, Marilyn Neve, Lloyd Neve, Paul Johnsen.

THE PEP BAND



BASKETBALL

Dana took off to a racing start in basketball by winning two of their first three games against formidable opponents. The remainder of the season found the Vikings fighting a down-hill battle as they captured only one more cage victory. The Viking cagers did have moments of exultation, however, despite their rather dismal showing. A victory over the conference champion Norfolk five and two excellent showings against the much larger University of Omaha were the bright spots of the season. Result of the season: three victories and fourteen defeats. Jim Youmans, versatile center of the squad, led the Dana scorers and was named on the conference honor team.

First row: Bud Robinson, Harold Schou, Del Neary, Gene Megrue, Jack Bryant, Shirley Hughes, Jack Kitterman, Niels Carlsen. Second row: Hugh Hughes, Dale A. Petersen, Howard Petersen, Phil Iversen, Jim Youmans, Howard Nielsen, Ray Hansen, Eddie Andersen, Wilbur Clements, Charles Knudsen, Coach Paul Peterson. Third row: Stuart Paulsen, Lyle Morgenson, James Holmes, Darrell Wilson, Robert Hansen, Dean Madsen, and Forrest Leighton.



Bud Robinson goes high into the air to dump one in for Dana. Jim Youmans is ready for rebound work. Final score Dana 49, Norfolk 40.

Here is Lyle Morgenson on his way up for a lay-in shot at the basket. Jim Holmes and two unidentified Concordia players wait for a possible rebound.



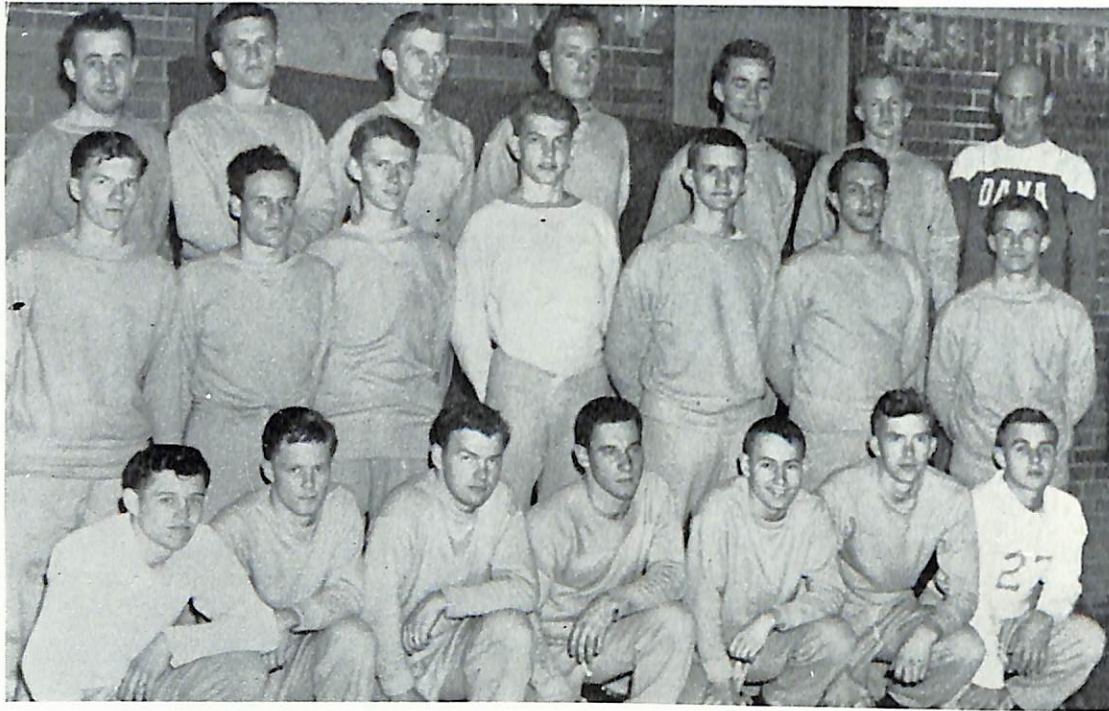
STATISTICS

	Games Won—3		Games Lost—14	
	Dana		Opponents	
Total Points	793	900		
Average per Game	46.65	53.06		
Field Goals	310	360		
Free Throws	173	180		
Free Throws attempted	366	359		
Free Throw percentage	47.3	50.1		

INDIVIDUAL SCORING—FIVE GAMES OR MORE

Jim Youmans	188
Bud Robinson	123
Jim Holmes	84
Harold Schou	81
Ray Hansen	72
Lyle Morgenson	69
Shirley Hughes	43
Dean Madsen	41
Robert Hansen	35
Jack Bryant	23
Wilbur Clements	17
Gene Megrue	8

TRACK TEAM



First row: Bud Robinson, Harry Andreassen, Bill Johansen, Art Sorensen, John Hansen, Arnold Larsen, Dale Petersen. Second row: George Andreassen, Don Rouse, Virgil Andersen, Gene Mengers, James Hansen, Maynard Andersen, Norman Hansen. Third row: Jack Krogh, Mark Viere, Fred Jensen, Holger Christensen, Norman Winther, Elmer Petersen, Coach Paul Peterson.

For the first time in her history Dana fielded a track team. Although hindered somewhat by the lack of equipment and a track, enough interest was created to insure the continuance of this division of the athletic department at Dana.

Dana competed in three meets of this new spring activity. On April 25th Dana was represented at the Sioux City Relays by her middle distance relay teams and on April 28th the Viking track team entered a triangular meet with Concordia and Creighton at Creighton University. A meet with Midland was held on May 5th. Highlight of the season was the annual seven school Conference Relays held at Central City, Nebraska, in which Dana placed well.

Approximately thirty men reported to Coach Paul Peterson in the early spring and after several weeks of conditioning developed into a better than average track squad for a school of Dana's size. Main strength of the team was in the dashes, middle distance runs and relays. Lack of experienced men in the field events left this division of the sport somewhat weaker.

MEN'S INTRAMURAL SPORTS



The Bjtdangs: Norm Hansen, Glenn Neve, Jim Hansen, Don Schou, Tork Kastrup, Bill Johansen, and Art Sorensen.

Intramural sports created the usual great interest on the campus this year. Students engaged in competition among themselves in the sports of touch-football, basketball, volleyball and softball.

A well organized touch-football team captained by George Neve grabbed the honors in the league of the great fall classic by winning every game on its schedule.

Intramural basketball attracted the greatest amount of attention. Several potential varsity athletes were discovered on some of the well organized squads. Eight teams were entered in the conference which proved to be an exciting duel up until the last games of the season between the Bjtdangs and the Town Terrors. Climax of the season was an exciting 31-29 win by the Bjtdangs over the smooth Town Terror team. The Hermes sports staff and officials of the tourney collaborated in selecting an All Conference team composed of Butch Hansen, Tork Kastrup, Pee Wee Sorensen, Gene Mengers, Don Schou, Jack Megrue, Duke Vaaler, and Art Sorensen.

Volleyball held the spotlight of the intramural activities in the early spring months. A five team league was led by a squad of Unmentionables captained by Don Schou and Howie Petersen. As warm weather arrived in mid-April softball games began to dominate the intramural schedule.

WOMEN'S ATHLETICS

CALISTHENICS

Calisthenics were a regular feature of physical education classes. Progress records showed that improvement was made in almost every case. Several weeks were devoted to special rhythmical exercises to help develop grace of movement.



Left corner to right: Pauline Clausen, Mary Ellen Lindholm, Mariane Lund, Esther Hertz, Elsie Jensen, Mary Skobo.

SOFTBALL

A series of intramural softball games were played in the fall in connection with W.A.A. and women's physical education activities. The games, preceded by training in playing the different positions, were played outside regularly scheduled class programs, offering more opportunity for informality.



BASKETBALL

Intramural basketball games, played according to the double elimination bracket, created the greatest interest. The girls were referees, thus receiving practical experience in the technical side of the sport. The championship team was captained by Esther Hertz.

BOWLING TEAMS



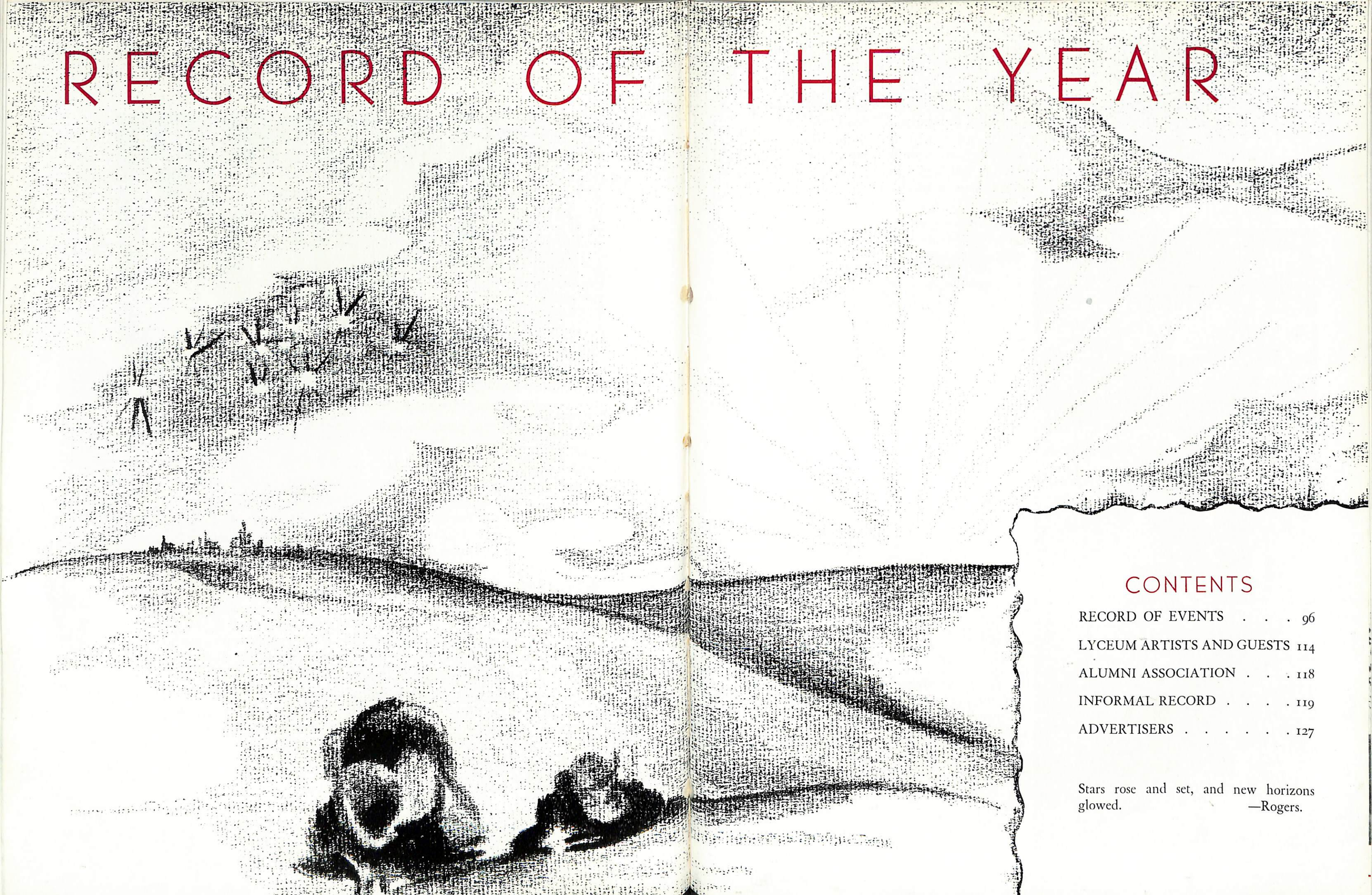
Front to back: George Andreasen, Harry Andreasen, Charles Hansen, Bill Pearson, Dick Videbeck.
Back to front: Harriet Lohr-Olsen, Pauline Clausen, Betty Schmidt, Elizabeth Hansen, Norma DeGrave.

In addition to the sponsored athletic activities of the college the bowling enthusiasts organized themselves for participation in the Blair City Bowling League. The league was organized in early fall and continued through until the latter part of April. Dana was represented in both the women's and men's league.

The Dana men proved themselves to be capable competitors as they ended the season in fourth place, fully ten games ahead of the fifth place team and only five games out of first. The Dana team, known as the Brooklynites, embodied Dick Videbeck, George Andreasen, Harry Andreasen, Bill Pearson, and Charlie Hansen.

Captain Elizabeth Hansen, Norma DeGrave and Harriet Lohr-Olsen were regular members of the Dana Co-Ed team. Several other girls were at one time or another also bowling with the co-ed keglers. Norma DeGrave was the high individual scorer of the team and also finished among the leading ten of the women's league.

RECORD OF THE YEAR



CONTENTS

RECORD OF EVENTS	96
LYCEUM ARTISTS AND GUESTS	114
ALUMNI ASSOCIATION	118
INFORMAL RECORD	119
ADVERTISERS	127

Stars rose and set, and new horizons
glowed. —Rogers.

AUTUMN PICNIC

Volleyball, scavenger hunt, apples, bonfire, songs, crisp autumn air, the seclusion of DeSoto Woods are things remembered from the all-school picnic, October 12. Students were divided into groups for the afternoon activities and for the presentation of impromptu skits later in the evening. Scene-stealer of the event was the bottle contest in which six men volunteered to drink the contents of coke bottles through nipple attachments.



The bonfire is given a bit of encouragement



as other picnickers return from a scavenger hunt that took them up hill and down ravine and back again



to join in a fast game of volleyball before supper is served.

HOMECOMING

OCTOBER 25-27, 1946



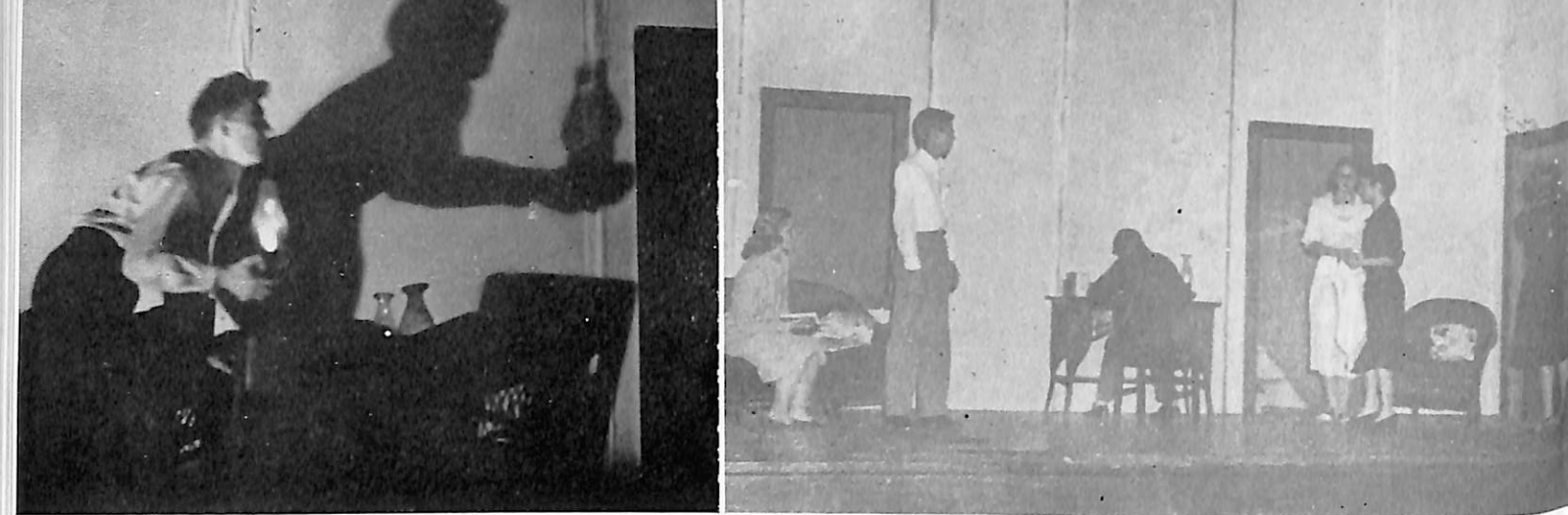
The welcome signal is hoisted to the tower to greet returning members of the Dana family.

Old friends returning, students rushing about welcoming them, the "D" being hoisted to the tower, freshmen discovering the ties of friendship that bind the scattered members of the Dana family, Jim Stone and his committee busy at registration desks and decorating the auditorium: Homecoming of 1946 had begun.

The Homecoming committee: Jim Stone, chairman, Elizabeth Solevad, Ordell Olson, Marjorie Nelson, and Alice Romer. Phil Larsen was the sixth member.

Students and guests gaze at the effigy representing Luther College, football opponent. Effigy added fuel to the pep bonfire.





Homecoming drama: Eerie shadows and the chatter of a deranged maid.

D.C.D.C. presented two one-act plays on Friday evening of Homecoming. "The Opening of the Door," a mystery, was presented in almost complete darkness, with kerosene lamps casting eerie shadows. The tension of this production was soon relieved by the second play, "For Whom the Telephone Rings." This was a farcical comedy that left everyone in a jovial mood, an apt preparation for the pep rally that followed.

Around a huge bonfire, alumni and students gathered to sing, building morale for the football game to be played the next day. The pep band played with appreciated fervor. After the rally, a snake dance through the streets of Blair climaxed the evening.

Spirits rose with the flames at the Homecoming pep rally.



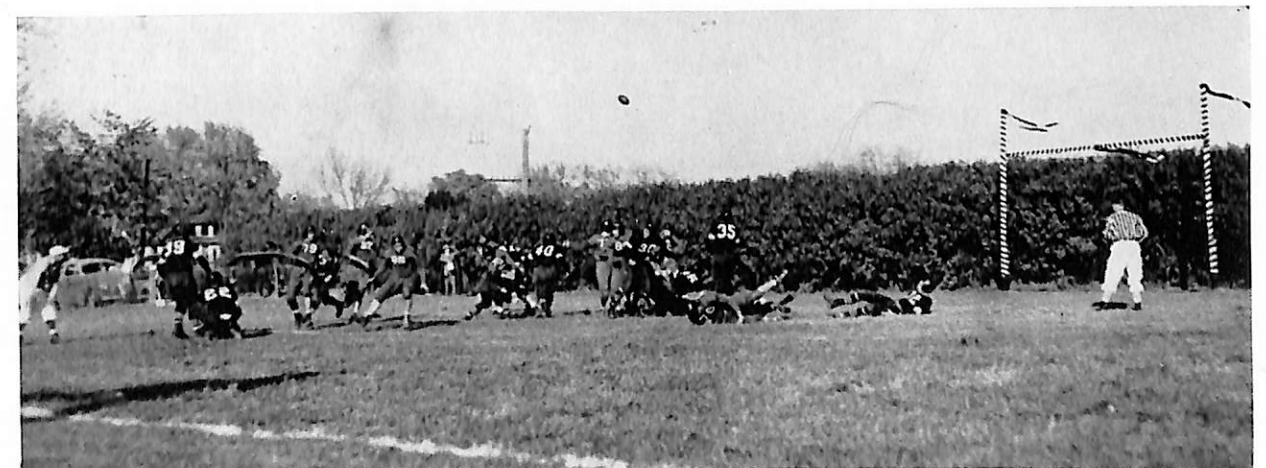
The Women's Dorm, choir, and W.A.A. floats join the parade.

Floats were assembled Saturday morning for the afternoon parade through Blair. The choir float was built over a car, representing Dana Hill with a replica of Old Main on top. The Women's Dorm float was a replica of the dormitory. Among other floats was a victory garden with such slogans as "Beet Luther," "Squash 'Em." Many other floats added a colorful touch to the parade which ended at the football field. Dana played Luther and was victorious with a score of 44-7.



The parade moves through the streets of Blair.

Dana was the victor in the Homecoming game.



HOMECOMING KAFFEBORD

Breaking tradition, the formal program was held in the auditorium Saturday night in the form of a *kaffebord*. Developing the theme, "Forget not yet thy youthful visions," the auditorium was decorated with spotlighted silver trees, and symbolic murals designed by Elizabeth Solevad.



Joseph Langland

The main speaker was Joseph Langland, former Dana professor and, during the war, a captain serving with AMG in Europe. Mr. Langland, now an assistant professor of English at the University of Iowa, gave a most encouraging address in which he stressed Dana's potentialities as a church college.

Presented by the music department, the Sunday afternoon musicale concluded Homecoming entertainment.

Where we love is home,
Home that our feet may leave, but not our hearts.

—Oliver Wendell Holmes.



CHRISTMAS AT DANA

Each year Dana pauses to honor the birthday of her King. The festivities of this season are among the most memorable of the year. The singing of "The Messiah," the presentation of Dickens' "A Christmas Carol," the formal Christmas banquet, and the singing of carols by various groups have all become a part of the Christmas tradition at Dana.



Men of Dana carolling in the Women's Dormitory.

Christmas came to Dana this year with the lighting of the tree on the balcony of the Men's Dormitory. This was followed by a week of carols broadcast to the quadrangle early in the morning and in the evening from an improvised studio in Trinity Chapel. The men were awakened early one morning by the women carolling through their hallways; this was reciprocated by a male chorus carolling the women at midnight in their dormitory.

Dana carollers at First Lutheran Church in Blair.





The Ghost of Christmas Past points to memories that Scrooge has of his own past.

Dickens' immortal "Christmas Carol" was presented with Maynard Andersen in the lead role as Scrooge. Under the direction of the Dramatic Club, the various roles were opened to non-members who acted with the vitality due Dickens' classic. With a minimum of scenery, the play brought out the power written into the roles.

Curtain call for members of the "Carol" cast.



DICKENS' A CHRISTMAS CAROL

AT DANA

L S A CHRISTMAS PROGRAM



Mary retells the Christmas story to Luke.

An unusual presentation of the Christmas story was the striking feature of the L.S.A. Christmas program. Luke, played by Paul Simon, interviewed Mary, played by Marjorie Jorth, to secure first-hand information concerning the events surrounding the Savior's birth. Oscar Johnson was the speaker of the evening.

Following the program students toured the town carolling through the streets and gathered late in the evening at First Lutheran Church where Dan and Marie Greeno, beloved friends of Dana, served refreshments.

LSAers bring Christmas music to the streets and homes of Blair.



A CHRISTMAS TRADITION:



"THE MESSIAH" CHORUS

Under the direction of Professor M. J. Widman, Handel's "The Messiah" was presented in the auditorium by a chorus of one hundred voices that included the Dana Choir, local church choirs, and other singers. The solos were sung by Miss Louise Woeppel, soprano, and Mrs. Ruth Blanchard, contralto, both instructors in the music department. Everett Kanouff, tenor, and William Miller, bass, were guest soloists. Professor Paul Neve accompanied at the organ.

The large attendance from the communities of the area was evidence of the fact that this Dana tradition is rapidly becoming a community tradition that will spread the true Christmas message to increasingly large audiences.

W. A. A. CHRISTMAS FORMAL



Waiting in the reception room before the banquet.

At the formal banquet, sponsored by the W.A.A., Rhoda Iversen read a Christmas poem written by Carol Mengers to co-ordinate the numbers on the program of music and readings. The dining hall was decorated in blue and white, and in the soft glow of candlelight the Christmas message was retold. Informality held sway as humorous gifts were exchanged following the banquet. Group singing of the songs and hymns of the season completed the festivities of the evening.



Fifth Triennial
NATIONAL LUTHER LEAGUE CONVENTION
of the United Evangelical Lutheran Church,



Rev. C. M. Videbeck
Guest speaker

A spirit of earnest Christianity prevailed at the National Luther League convention, opened Thursday night by a convocation at which the Rev. Christian Justesen delivered the challenging sermon. Rev. C. M. Videbeck of Brooklyn, the main speaker, presented a series of three lectures on the "Wheel of Life" during the convention. A study of our relations with God through self, God, things, and society was made. Dr. J. M. T. Winther, former missionary to Japan, was guest of honor and spoke in a forthright manner of the need for missionary zeal.

On Saturday afternoon, a symposium of varied topics was held following group discussions of the problems. Thought on church problems was stimulated.

"Come, for all things are now ready." The altar around which convention devotions centered.



February 6-9



The Augsburg College Choir sang a Sunday evening concert.

At a social mixer, future Dana students were given an opportunity to become familiar with the friendly Christian atmosphere that is Dana's.

A Sunday evening concert by the Augsburg College Choir served as the final worship program of an inspiring convention.

National officers elected were Rev. M. G. Hagedorn, president; Rev. A. E. Neve, vice-president; Rev. Edward A. Hansen, secretary; and Archie Madsen, student at Dana, treasurer.



Dr. J. M. T. Winther
Guest of honor

Students entertained convention guests at an informal program of fun and fellowship.





The Winners



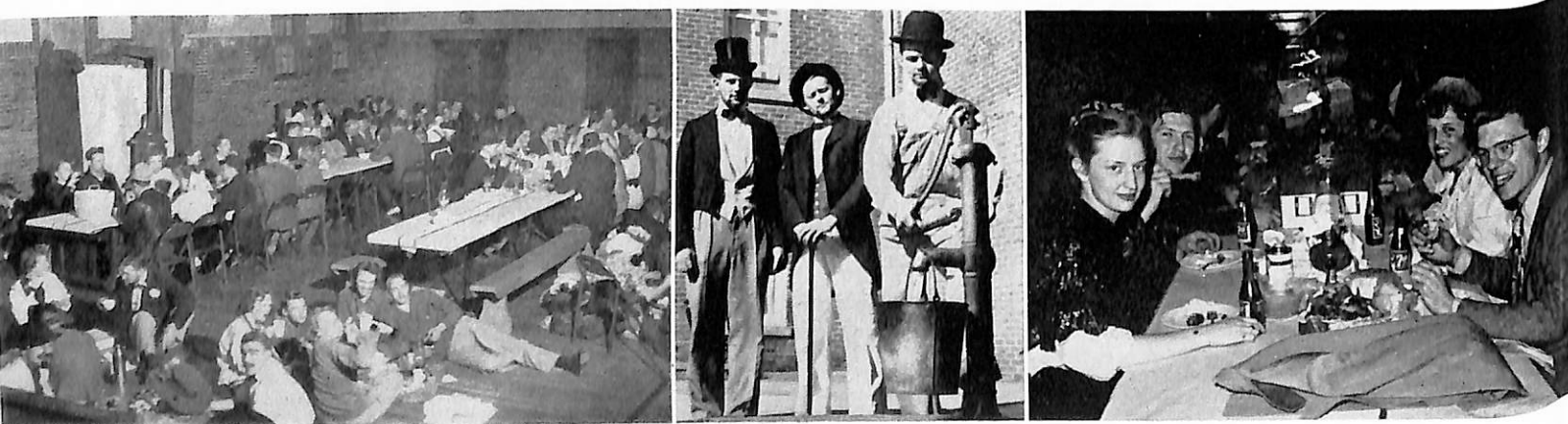
"Bird in a Gilded Cage"

"DAYS OF OLD DANA"

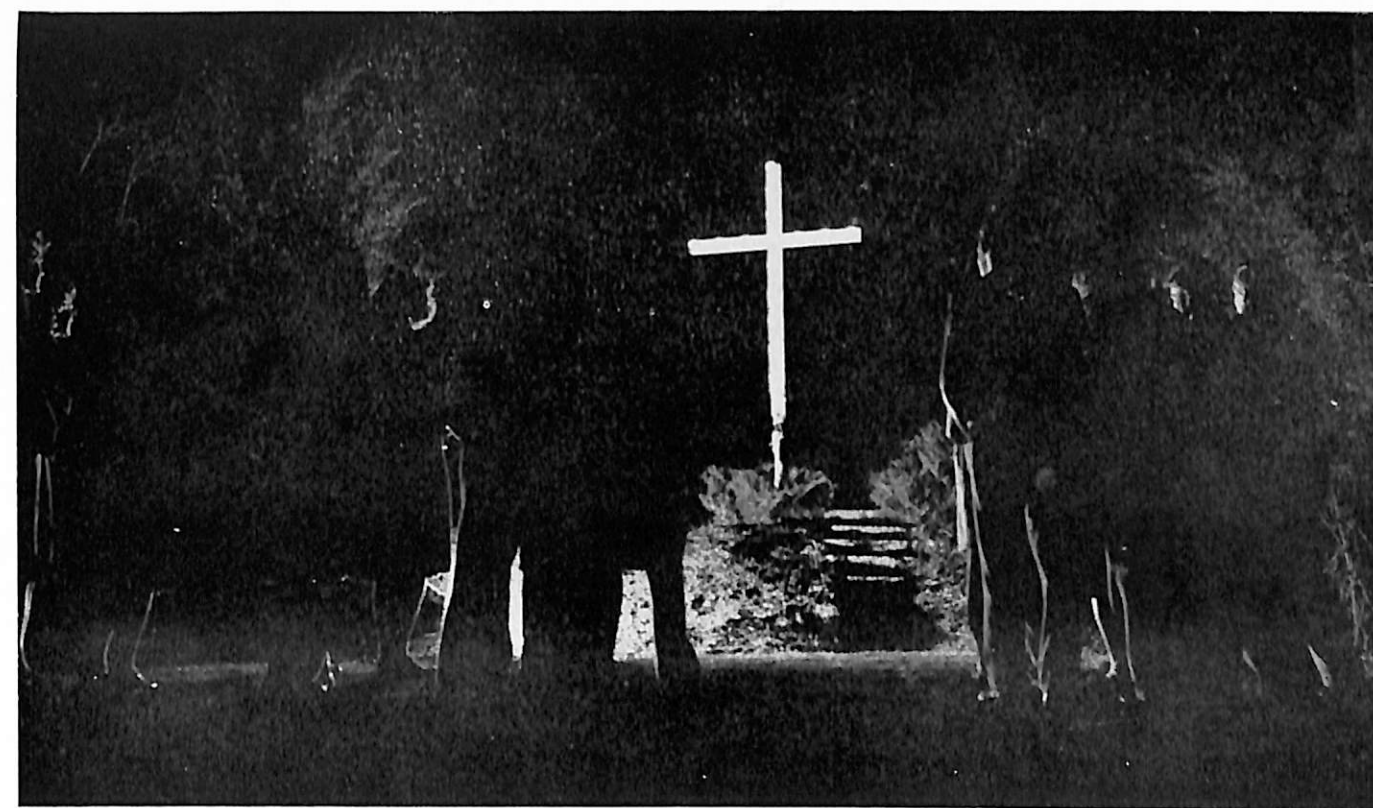
Beards, bustles and baskets were the three main interests at the senior class-sponsored "Days of Old Dana" party in March. The men expressed their manliness in growing beards. Roy Mumm won the award.

Aspiring to the prize for the best costume, some girls donned fancy bustles, others wore the drape dresses of the twenties, but Mumm's "sweet-heart," Dale "Clementine" Petersen, won first prize for his disguise.

Dorothy Granlund, mistress of ceremonies, introduced the ladies of O'Tucker's Seminary singing "Bird in a Gilded Cage" under the direction of their headmistress. Reminiscences by Pastors P. C. Jensen and Peter Thorslev brought back vividly the old days on the hill.



EASTER AT DANA

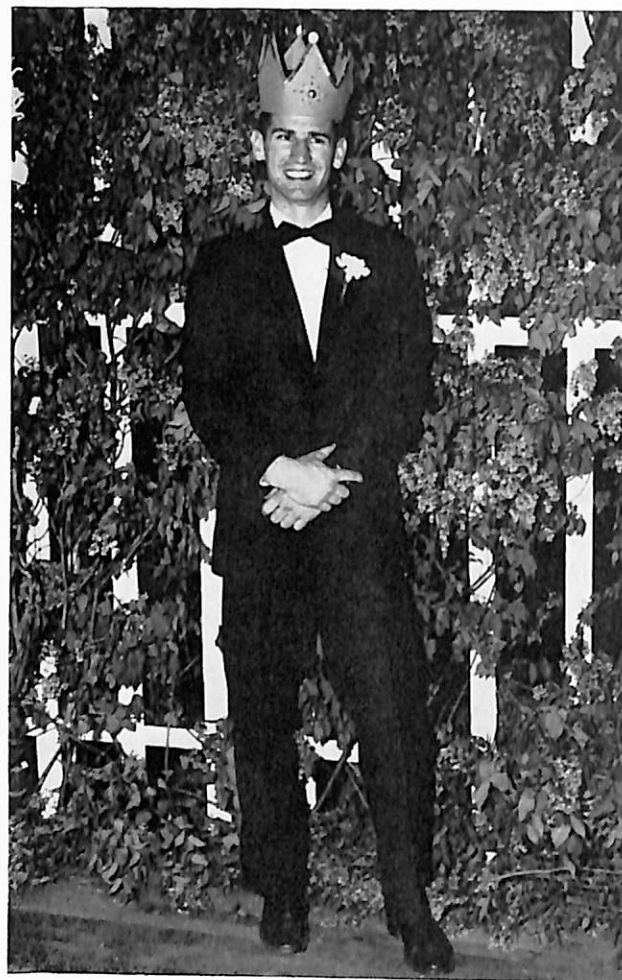


"All the light of sacred story gathers round its head sublime."

Evening devotions held in the chapel prepared all for a meditative Lenten period. The somberness of Lent was portrayed in such a way that students were brought face to face with the Christ of the cross. They sang of this sorrow as they gathered for a Wednesday sunrise service and in the evenings for devotions beneath the lighted cross. A Maundy Thursday communion service was held at sunrise before a simple altar. Songs of sadness were soon changed into hymns of victory as residents of Blair joined the students for an Easter sunrise service in the auditorium to hear former Marine Chaplain C. C. Madsen proclaim the good news of the risen Savior.



Queen Joan



King Dean

With pomp and ceremony, the coronation of the King and Queen of Lilac Time was held Saturday evening, May 3, in the Dana auditorium, where lilacs had been arranged in arbors and on the stage and floor. The thrones were set against a royal wall of velvet. Dr. N. C. Carlsen crowned Dean Madsen and Joan Andersen as King and Queen while the haunting oriental scent of lilacs hung over the room. Princesses were Esther Hertz and Dolores Jensen; princes were Paul Simon and Arthur Sorensen.



LILAC TIME

An informal program of music and poetry followed the coronation. Donald Hansen, master of ceremonies, gave the program a free touch with his light humor. Refreshments of punch, cakes and sandwiches gave the audience an opportunity to gather in groups for conversation.

Planned by the student music committee, the all-student music festival on Sunday afternoon was a successful symposium of music from Bach to modern trends. The plan of the festival was to show the influence one composer may have had on another, fourteen forms being represented. The program flowed with a professional smoothness. After an introduction by Donald Poh, each selection was introduced with a commentary written and read by Robert Videbeck, chairman of the music committee.

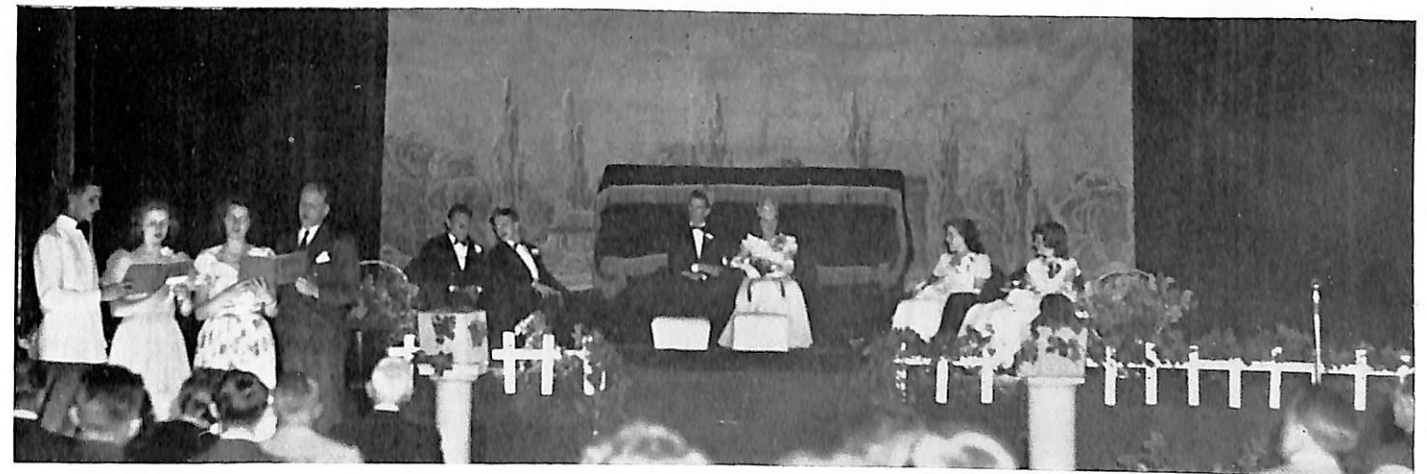


Their royal highnesses, the Princes and Princesses of Lilac Time, Paul Simon, Dolores Jensen, Esther Hertz, and Arthur Sorensen.

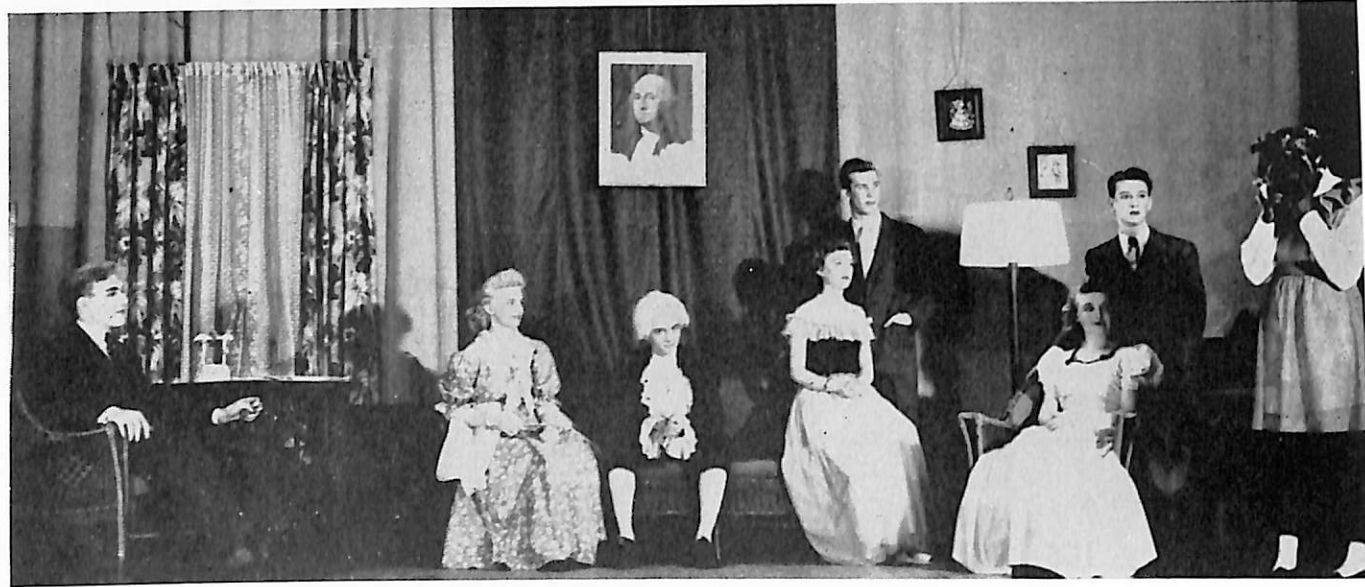


Dr. N. C. Carlsen crowns the King. In the background are crown-bearers Marjorie Jorth and Forrest Leighton.

Lilac Time royalty in the throne room during the program.



SPRING DRAMA



Donald Schou, Marilyn Guyer, Jack Kitterman, Lorraine Nelson, Charles Knudsen, Elizabeth Hansen, Gerald Hatt, Pauline Clausen.

"THE LOST LETTER"

On February 24, in commemoration of Washington's birthday, the History Club presented an historical program. The main feature of the program was a one-act play, "The Lost Letter," directed by Dr. H. F. Swansen. The play served as an excellent reminder of the integrity of Washington. Musical numbers were also presented and Archie Madsen delivered an oration, "Traits for True Greatness."

Jim Hansen, Betty Johnson, Paul Simon, Mariane Lund.



"HIGHNESS"

"Highness," a one-act drama by Ruth Giorloff, was presented April 24 by the Dramatic Club. Action takes place in Russia shortly after the Revolution and centers about a scrub-woman and a princess held as a prisoner. Family ties, old memories, escape, and death add to the pathos of the drama.

Three-act Comedy "WHERE THERE'S A WILL" May 23, 1947, Dana Auditorium

Action takes place in the living room of the Emerson home and revolves around the inheritance of several thousand dollars bequeathed, with heartbreaking provisos, to the Emerson family.

Mrs. Zella Keith
Lorna Keith
James Emerson
Mrs. Alice Emerson
Linda Emerson
Ralph Macy
Henry Hale
Wallace Taylor
Jane Scott
Edmund Lewis
Sylvia Terry
Gates Austin
Lily White

Marilyn Juul
Marjorie Jorth
Kenneth Weaver
Marilyn Guyer
Lorraine Nelson
Roger Hansen
George Andreasen
Norlan Hanson
May Skobo
Niels Carlsen
Harriet Mortensen
Edward Andersen
Pauline Clausen

Highlight of the
Dramatic Club

Calendar for 1947

Commencement Festivities Complete Record of the Year

COMMENCEMENT WEEK PROGRAM

June 1-3, 1947

Members of the graduating classes of 1897, 1907, 1917, 1922, 1927, 1937, and 1942 are guests of honor during commencement week.

Sunday, June 1, 1947

10:45 a.m. Baccalaureate Service, Auditorium.
3:00 p.m. Music Recital, Auditorium.
8:00 p.m. Home Concert of the Dana Choir, Blair High School Auditorium.

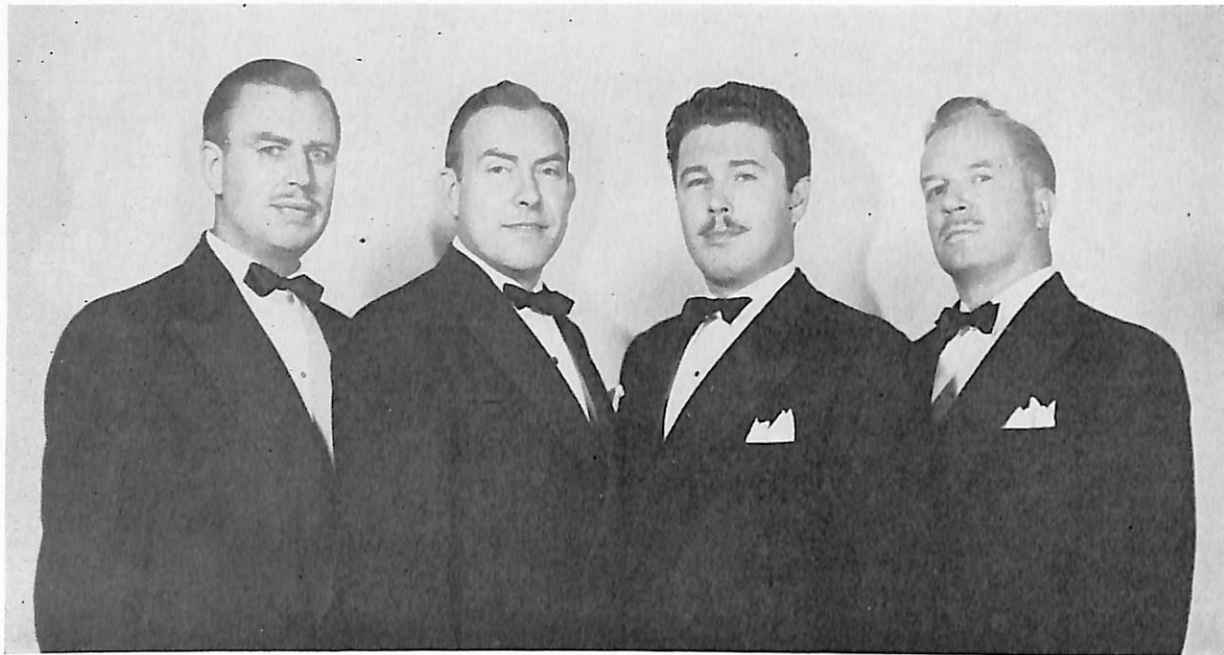
Monday, June 2, 1947

10:30 a.m. Class Reunion, Auditorium.
6:00 p.m. Class Dinner, Dining Hall.
8:00 p.m. Ivy Planting Ceremony, Campus.
Senior Class Program, Auditorium.

Tuesday, June 3, 1947

9:50 a.m. Chapel Convocation, Auditorium.
10:30 a.m. Sports Event.
2:00 p.m. Music Recital, Auditorium.
8:00 p.m. Commencement Exercises, Auditorium.
9:45 p.m. Commencement Kaffebord, Dining Hall.

LYCEUM ARTISTS AND GUESTS



THE GUARDSMEN QUARTET

Hollywood's Guardsmen Quartet opened the lyceum series with a concert on October 23. Variety of selections, from classical favorites to modern music, added to the appeal of the program. The finale was a presentation of songs of the Gay Nineties, the quartet coming on stage in formal garb of that earlier era to sing with appropriate fervor and emotion.



JEROLD FREDERIC

In a program of well-chosen compositions, Jerold Frederic presented a brilliant evening of piano music on February 21. His repertoire included Liszt's "Hungarian Rhapsody XII," Chopin's "Nocturne No. 2," and three transcriptions on American tunes. Mr. Frederic held sway over his audience, the applause proving his magnetic qualities as a piano artist.

DR. PAUL ENGLE

A distinguished visitor to Dana in October was the author and poet, Dr. Paul Engle, at present head of the writer's workshop at the University of Iowa. He has seven published works to his credit, including *American Child*, which *Life* recently reviewed pictorially. He presented two lectures on writing to interested members of the student body.



DR. O. W. QUALLEY

In his informal lecture before the History Club in April, Dr. O. W. Qualley, archeologist and dean of Luther College, Decorah, Iowa, re-excavated the Fayoum area of Egypt. He stated that explorations had made possible the reconstruction of the life of the early Egyptians. A similarity in the language of the New Testament and that used in the Fayoum area was discovered. His lecture was illustrated with slides from the excavations. While at Dana, Dr. Qualley also gave a short lecture on the Bible, explaining the different types of material on which the Bible had been written and tracing the translations and revisions of the Scriptures.

HELEN PETERSON

Miss Helen Peterson, magazine writer and a charming and delightful little woman with an amazing sense of humor, visited Dana in April and presented two lectures on writing. Her first lecture, derived from questions submitted by students, brought sparkling, spontaneous answers. "Words, Words, Words," the second lecture, was a humorous approach to the serious problem of the selection of words. Aided by illustrations in story form, Miss Peterson's lecture put many students on the alert for a proper selection of words.

MISSIONARIES ON FURLOUGH WERE GUESTS

Margaret Nissen, Harriet Widman, Dr. Dagmar Pedersen

Miss Margaret Nissen, missionary from Nigeria, was a campus guest in April. Speaking at First Lutheran, at chapel services and at evening devotions, she emphasized the critical need for missionaries trained in varied occupations, but having the pre-requisite of a vital Christian faith. This same note of urgency was sounded during the shorter visits of Miss Harriet Widman, also from Africa, and Dr. Dagmar Pedersen of the Santal Mission in India.

GUESTS FROM OVERSEAS:

THE DANISH GYMNASTIC TEAM



Erik Flensted-Jensen
Director



Anne Marie Lind-Boerup
Director, Girls' Team

OUR IMPRESSIONS:

On a tour across the continent, the Danish Gymnastic Team, guest of Dana for three days in March, gave two performances in Blair, one at the high school and one at Dana for the students and faculty. In his opening addresses Erik Flensted-Jensen, the director, called our attention to the fact that the cross-flag of Denmark should remind us of our Saviour. Explosive applause followed many of the feats. More overwhelming were the precision and dynamic aptitude those young men and women had in calisthenics. Under the direction of Mr. Flensted-Jensen, the boys masterfully executed the art of calisthenics; the girls, under the direction of Mrs. Lind-Boerup, did rhythmic exercises and performed on balancing bars.

As the gymnasts prepared to depart, students gathered about the bus singing songs and hearing Danish songs sung in return. The amazing performances, the antics at the social, but above all the sincere expression of international friendship on the part of our friends from Denmark will long remain in Dana's memory.

The handkerchief skit presented by the Gymnasts brought appreciative howls of laughter from us. Folk games united students and team members.

T E A M

THEIR IMPRESSIONS:

Is there anything more delightful than a confidential chat with another youth—who shares your interests and ideals?
—*Johannes Petersen.*

They were delightful days we spent at your beautiful college. It would be well if there could be greater intercourse between the youth of the different countries, so we could learn to understand one another better and respect one another more.
—*Leif Christensen.*

Nowhere have we received a more cordial welcome. We shall never forget the all too short time we spent with you.
—*Margrethe Winther.*

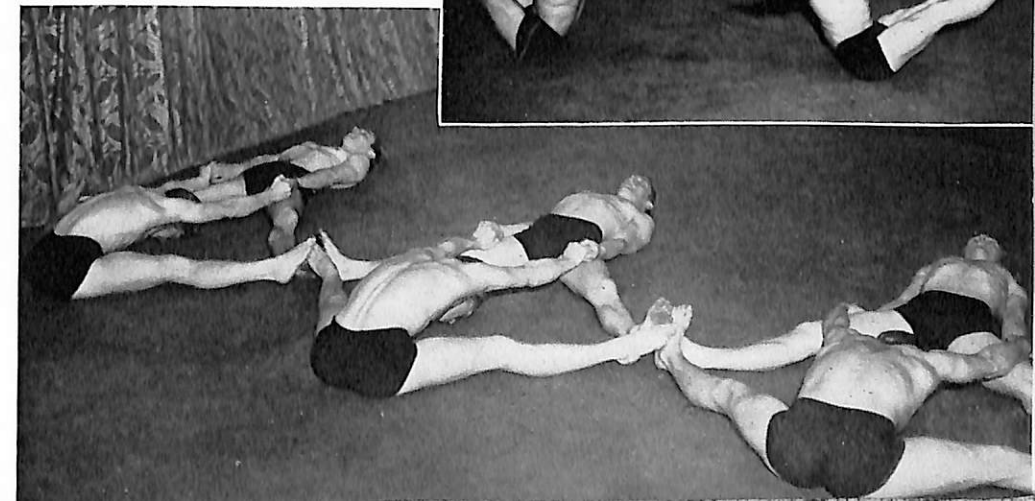
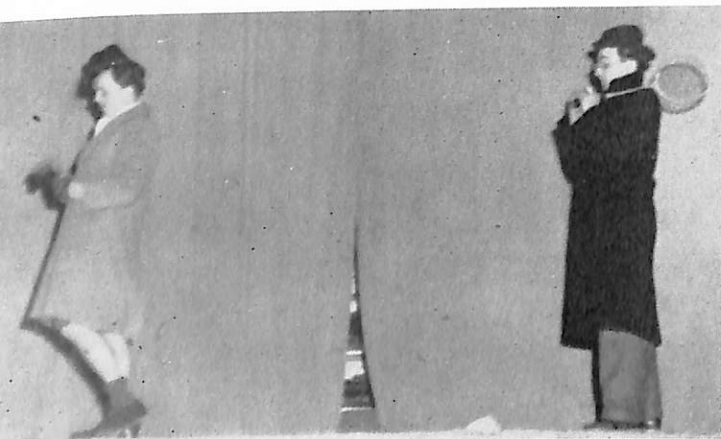
The whole atmosphere on your campus—your frank and cordial comradeship—had so strong an appeal that we actually long to return and renew the experience.
—*Erich Hansen.*

"Thanks"—the word—is easy to say; Thanks must be lived from day to day. We will try to show our thanks by living in the Dana spirit . . . a special thanks to the Dana Choir—I will never forget the wonderful songs.
—*Karin Hansen.*

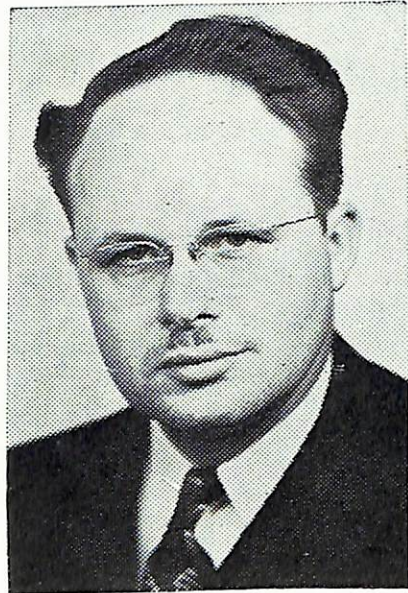
A sympathetic groan from spectators greeted these strenuous poised and stretching positions.



Gay folk dancing in authentic regional costumes was a highlight of the exhibition.



ALUMNI ASSOCIATION



Rev. Alvin M. Petersen
Lincoln, Nebraska
President



Rev. Leo M. Andersen
Luck, Wisconsin
Vice-president



Irene Andersen
Brush, Colorado
Secretary



Ruth E. Johnson
Kimberly, Wisconsin
Treasurer

In its program of improving publicity methods, the Alumni Association this year continued the publication of *The Alumni*, a quarterly edited by Luella Nielsen of Blair, and sponsored the printing and distribution of an alumni calendar that included for each month a familiar campus scene made especially attractive through superior photography. Mrs. J. P. Nielsen prepared the calendar lay-out.

The Association has voted to share the expense of maintaining the new combined office of director of public relations for Dana and executive secretary of the Alumni Association. During this school year five students received fifty-dollar tuition scholarships from the Association.

Homer Larsen served as campus secretary during the year and Lee Daggett continued his work as project director.

There is work . . .
for our staff of service personnel



Edith Nelson, Hilda Christensen, Frances Hansen, Cooks



Dora Nielsen
Matron

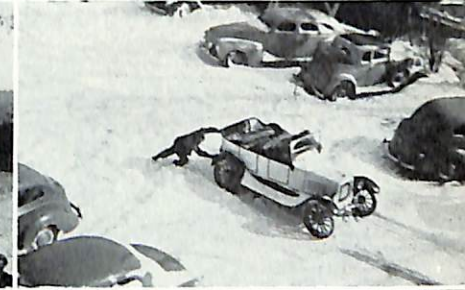


Emil Follen
Custodian



Thomas Jensen, M. S. Brondum
Assistant Custodians

and for ourselves



Too many cooks?
Saving on the laundry bill?
Rakish angle.

Before curtain call.

In summer . . . and in winter.
Repairs, repairs.
Then try it coming up!

study . . .



Students climb the new steps to Old Main to begin a crowded year of study. Lines are in evidence even at the text-book library. Our beloved old Viking still comes up to Dana to teach his classes.



The college book store is a handy source for needed supplies.



There is studying in comfort, studying in labs, even some study on the campus—and welcome breaks between class and study schedules.



worship . . .

The heavens declare the glory of God as we see day end from the summit of College Hill.

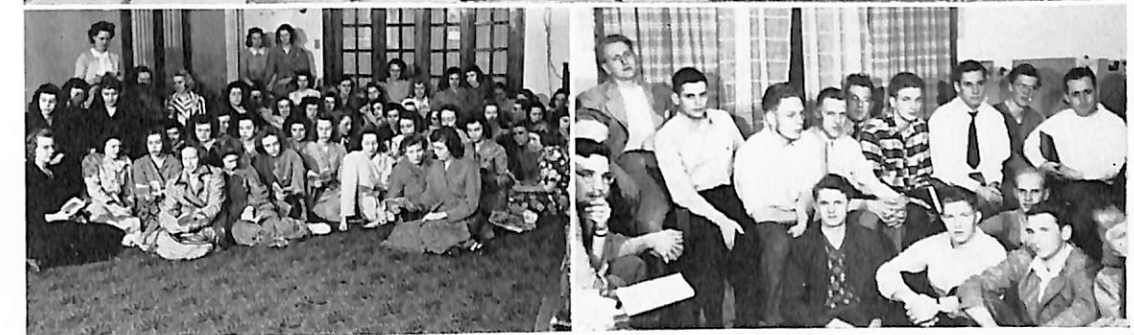
Vesper candlelight adds a note of quiet reverence to evening devotions.



Daily chapel services emphasize the fact that God's word is our great heritage and shall be ours forever.



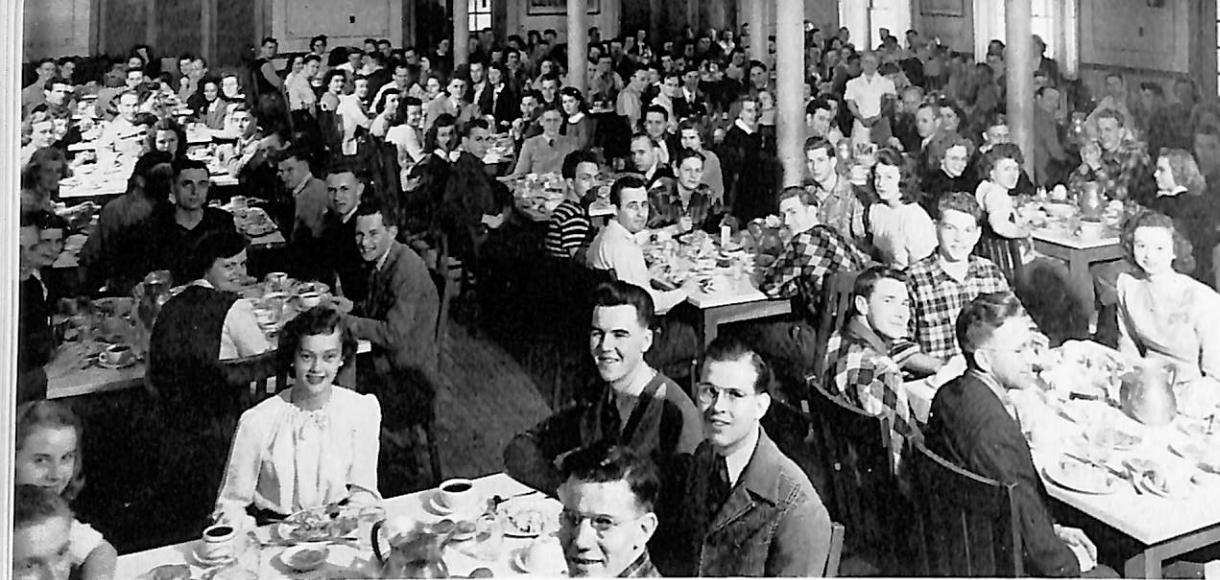
Once each week at dormitory devotions we gather together to ask the Lord's blessing.



We travel and bid travelers bon voyage . . .

Dana choir prepares for the tour as Leon says farewell to his director daddy. Students say farewell to the friends from Denmark.





A sense of humor is never lacking at Dana dinner-tables.

There is good fellowship . . .

Homecoming handshake.
"Giv mig et smek, Janice."
No casualties in sight.

Coffeetime . . . anytime.
Where there's smoke,
A lot of bunk.

Open house provides forecast of future.
A light to the paths of men.



. . . with fellow characters

Food!
The famed monkeys,
Midge,
Oh-ho-ho, my nerves!



Out of the gulch.
Child psych lab.
!

Shoulder to shoulder.
The Malne theologian.
Neve galley slaves.



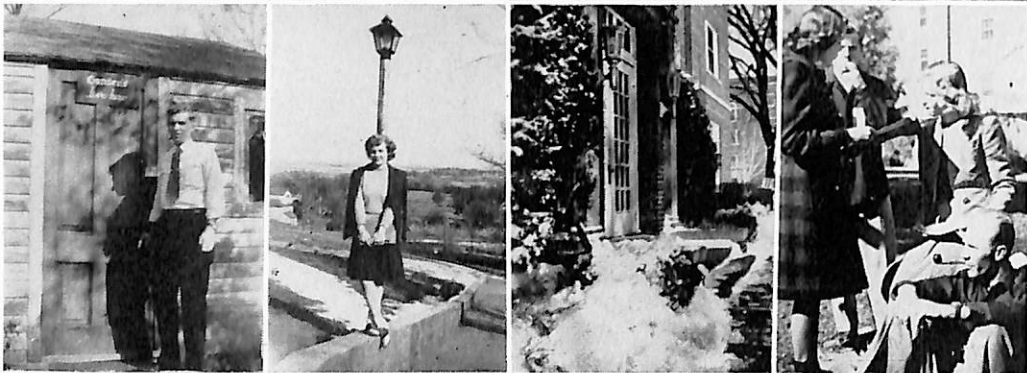
Rare view.
Jack's tickled again.
Kom lige her!
Tell me a story, Mommie.
Well, it IS Don!



Parting is such sweet sorrow.
"Oh, Juliet!"
"My Romeo!"

Three in one—or two.





Memories,

Contrasts in transportation—
this—
(The Oregonian between)—
and this.

Sunkist Californians.
Snowbound Iowan.
Snowbonnets.
Ghedelig Jul!

Remember the Widmans!
Ten minute break on clean-up
day.

Pappy's grey home in the west.
The old lamplighter.
Snow and evergreens.
Campus lab lecture.

Snow-time ain't no time . . .
so Anne and Harley were
married.
Six lessons . . .

memories

And then there was one.
The emissaries.
. . . and this!
Let's make it 7 o'clock.
Dottie, our hiking nurse.

The Brooklyn brothers.

Pot-shot Poh.
Gonna get our thintypes took.
Roommate reunion.

Reuben, Reuben, we've been
thinking.
Rest, for the concert cometh.
Man from Montana.
Marilyn's viewpoint.

Quadrangle confab.
Quadrangle capers.

Bit o' Honey.
Ravine camouflage.
Idaho maid in Nebraska
mud.
Tooth and his two mates.

Balcony scene.
From the sunshine of the
Philippines to the snows of
College Hill.



STUDENT PICTURE INDEX

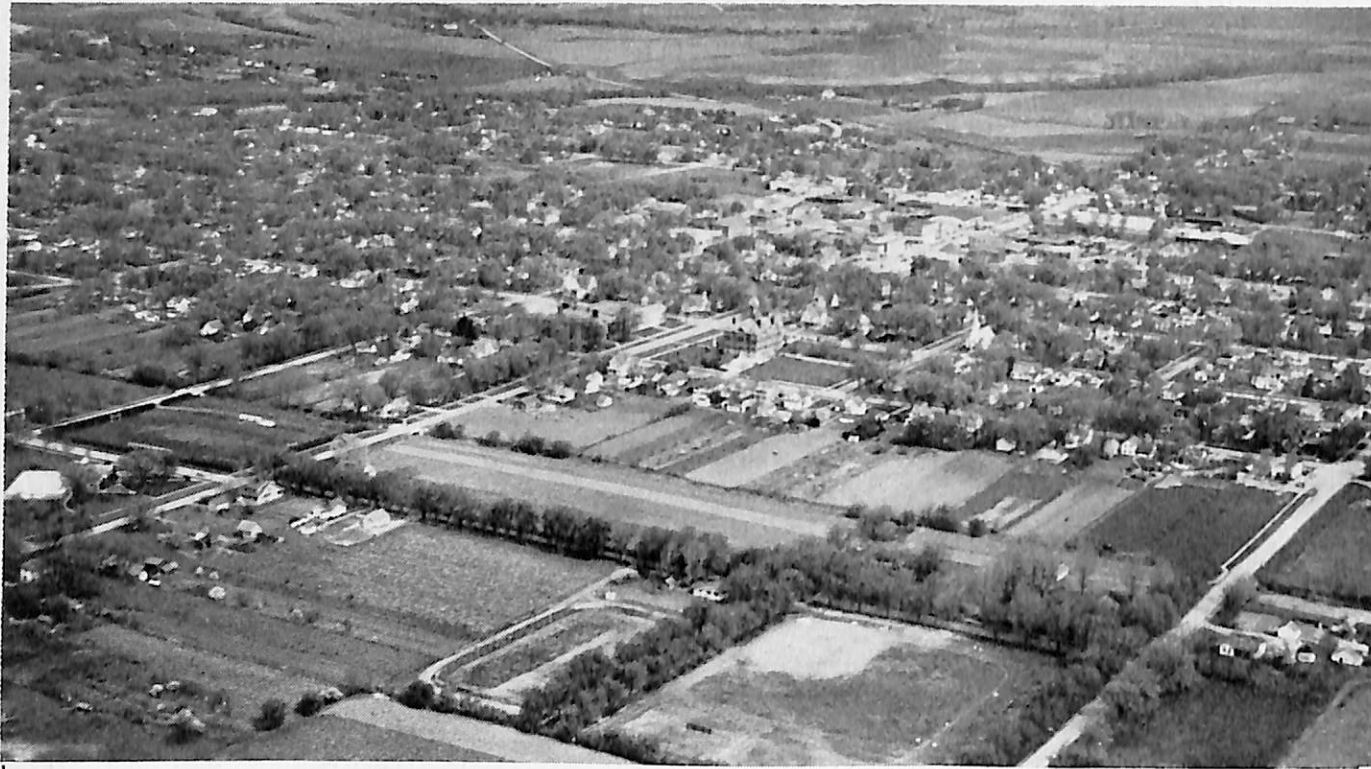
- A**
 Alback, Mildred L., 30
 Alton, Wendell P., 30
 Andersen, Amy R., 30
 Andersen, Anne Lage, 49, 69, 72, 73
 Andersen, Betty J., 38
 Andersen, Doris M., 30
 Andersen, Edward P., 30
 Andersen, Harold L., 45, 58
 Andersen, Joan B., 38, 59, 63, 68, 78, 87, 110
 Andersen, Lois E., 38, 61, 63, 70, 73
 Andersen, Maynard F., 38, 62, 68, 84, 85, 90
 Andersen, Virgil R., 30, 61, 69, 90
 Andreasen, George C., 30, 69, 90, 93
 Andreasen, Harry E., 30, 74, 90, 93
 Andresen, Carol R., 30
- B**
 Bansen, Norman C., 49, 64, 74, 75
 Bollesen, Virgil R., 38, 65, 78
 Brengelman, Fred H., 45, 76
 Bryant, Jack R., 88
- C**
 Carlsen, Gerhardt J., 30
 Carlsen, Mary Jo, 30
 Carlsen, Niels C., 38, 61, 73, 82, 85, 88
 Carlsen, Rhoda S., 49, 78
 Carlsen, Stanley L., 55, 82
 Christensen, Donald J., 30, 62
 Christensen, Elizabeth, 45
 Christensen, Erwin A., 85
 Christensen, Holger C., 45, 69, 73, 90
 Christensen, Jeanette J., 39, 63
 Christensen, Kjer, 30
 Christensen, Leona I., 31, 63, 70
 Christensen, Lorraine, 31, 63
 Christensen, Ray L., 31, 68
 Christensen, Wayne W., 69
 Christiansen, C. Arthur, 31, 81
 Clausen, Betty M., 31
 Clausen, Beverly M., 31
 Clausen, Pauline D., 31, 61, 63, 75, 80, 87, 92, 93, 112
 Coffey, James H., 31, 85
- D**
 DeGrave, Norma M., 31, 70, 93
 Demant, George R., 31, 68
 DeVasure, Glennis E., 31, 61, 63
 DeVasure, F. Lowell, 53
 Digerness, Toralf, 31, 68
- E**
 Eastlund, Audrey H., 50, 74, 75
 Eastlund, Charles O., 31
 Emmons, Jack C., 85
- F**
 Farrens, Duane A., 31, 62, 84, 85
 Flynn, W. Eugene, 39
- G**
 Glass, James T., 31
 Goldammer, Jack, 46
 Grandy, Marvin, 62, 85
 Guyer, Lee L., 39
 Guyer, Marilyn, 50, 61, 63, 78, 112
 Guyer, Mildred A., 31, 78
- H**
 Hansen, Allan W., 51, 73
 Hansen, Allison A., 51
 Hansen, Betty J. V., 31, 78
 Hansen, Charles E., 93
 Hansen, Charles R., 31
 Hansen, Donald T., 55, 82
 Hansen, Elizabeth J., 50, 59, 61, 63, 68, 73, 74, 75, 93, 112
 Hansen, Florence M., 46, 59, 68, 78
 Hansen, Howard C., 32, 78
 Hansen, James R., 32, 61, 62, 68, 78, 82, 85, 90, 91, 112
 Hansen, John E., 39, 69, 85, 90
 Hansen, Karen K., 32, 63, 65, 68, 70
 Hansen, Marie C., 32
 Hansen, Norman D., 39, 61, 62, 85, 90, 91
 Hansen, Paul O., 39
 Hansen, Raymond H., 46, 62, 88
 Hansen, Robert N., 32, 88
 Hanson, Cleo D., 39, 69
 Hanson, Norlan L., 39, 62
 Hanson, Roger J., 32, 74, 78
 Hanson, William J., 54
 Hatt, Gerald D., 39, 112
 Hendricksen, Ellinor, 32
 Hertz, Esther V., 39, 63, 78, 87, 92, 111
 Highby, Franklin M., 46
 Hill, Beverly A., 32, 80
 Hjortsvang, Herbert A., 32, 69
 Holman, Shirley K., 40, 61, 63
 Holmes, James F., 32, 88, 89
 Huber, Anna H., 46
 Hughes, Hughie, 50, 85, 86, 88
 Hughes, Shirley F., 40, 88
 Hundtoft, Donald D., 32, 61, 69
- I**
 Iversen, Phillip R., 32, 69, 88
 Iversen, Rhoda M., 40, 63, 78, 82
- J**
 Jacobsen, Jack E., 54, 68, 82
 Jacobsen, Janet A., 32, 70
 Jacobsen, Rhoda G., 40, 61, 63
 Jensen, Arnold W., 32
 Jensen, Dolores R., 40, 59, 63, 72, 73, 75, 78, 111
 Jensen, Donald S., 32, 78
 Jensen, Edna V., 32, 63, 73
 Jensen, Elsie M., 32, 59, 63, 68, 69, 70, 92
 Jensen, Frederick V., 32, 68, 78, 90
 Jensen, Howard, 40, 62, 85
 Jensen, Jack P., 40, 62, 84, 85
 Jensen, Marvin L., 33
 Jeppesen, Betty L. M., 33, 63, 70, 87
 Jeppesen, Paul A., 33
 Jersild, Harold J., 33, 69, 82
 Jespersen, V. Ione, 33
 Jipp, Marvin E., 69
 Johansen, Beverly, 33
 Johansen, Rhoda C., 33, 63, 80, 87
 Johansen, Willis V., 40, 62, 85, 90, 91
 Johnson, Paul C., 40, 65, 68, 78, 87
 Johnson, Ray V., 40
 Johnson, Betty J., 33, 112
 Johnson, Colleen M., 33, 63, 70
 Johnson, Earl M., 33
 Johnson, Harold E., 33, 73
 Johnson, Jeraldine A., 41, 63, 78, 87
 Johnson, Lois V., 33
 Johnson, Oscar E., 55
 Johnson, Willard C., 33
 Jorgensen, Allan H., 33
 Jorgensen, Sidney E., 41
 Jorth, Marjorie E., 41, 65, 68, 111
 Juul, Marilyn L., 41, 58, 63, 70
- K**
 Kaldahl, Donald L., 33
 Kaldahl, Vernon W., 33
 Kastl, Nona L., 33
 Kastrup, Thorkild V., 53, 91
 Kirkegaard, Anton C., 33, 68, 75
 Kirkegaard, Robert C., 34
 Kitterman, Jack, 34, 88, 112
 Knudsen, Charles E., 34, 85, 112
 Krogh, Jack W., 34, 78, 90
 Krogh, Kenneth C., 34
 Kruse, Janice M., 41, 63, 78
- L**
 Larsen, Alvina M., 46, 68, 70, 73, 74, 75
 Larsen, Arnold L., 34, 61, 78, 90
 Larsen, Asta Mae, 41, 63, 68, 81
 Larsen, Homer A., 54
 Larsen, K. Gerhardt, 34
 Larsen, Leon R., 34
 Larsen, Paul C., 51, 61, 72, 73
 Larsen, Phillip, 58, 62, 69, 82
 Laursen, Robert, 61
 Leighton, Forrest E., 41, 58, 62, 85, 88, 111
 Lewis, Gordon, 53
 Limjoco, Aida L., 34, 70
 Limjoco, Benjamin L., 34, 68
 Lincoln, Elaine G., 34
 Lindholm, Mary Ellen, 34, 63, 80, 81, 92
 Lohr-Olsen, Harriet, 53, 63, 73, 75, 78, 80, 93
 Lowe, Leah Mae, 34
 Lund, Mariane E., 41, 61, 63, 70, 75, 80, 87, 92, 112
- M**
 Madsen, Archie L., 46, 58, 62, 73, 85
 Madsen, Burl M., 85
 Madsen, Carrol L., 34
 Madsen, Dean R., 41, 62, 75, 85, 88, 110
 Madsen, Esther J., 34, 63
 Madsen, Margaret E., 34, 61, 63, 78
 Marcussen, Helen M., 34, 63, 80, 87
 McLeod, Joyce E., 48, 78
 Megrue, G. Gene, 51, 62, 85, 86, 88
 Megrue, Russell R., 35, 62, 85
 Mengers, Carol E., 41, 61, 68, 69, 73, 78
 Mengers, P. Eugene, 35, 90
 Michelson, Norris A., 47, 68
 Molholt, Ruth, 35
 Morgensen, Lyle R., 35, 88
 Mortensen, Harriet A., 35, 61, 80, 87
 Mumm, Roy F., 108
- N**
 Neary, Del W., 42, 62, 85, 88
 Nelsen, Lawrence, 47, 62, 85
 Nelsen, Lorraine A., 52
 Nelson, C. Joyce, 35, 63
 Nelson, Earl I., 47
 Nelson, Lorraine M., 35, 63, 112
 Nelson, Marjorie E., 42, 65, 68, 73, 78, 97
 Nelson, Maryann C., 42, 63, 78, 80, 81
 Neve, D. Marilyn, 35, 59, 63, 64, 68, 78, 82, 87
 Neve, Glenn E., 52, 72, 73, 75, 91
- Neve, Lloyd R., 55, 64, 82, 87**
 Neve, Ried V., 47, 65, 68, 73, 78
 Nielsen, Betty, 35
 Nielsen, Eivind, 54
 Nielsen, Eleanor M., 35
 Nielsen, Elna M., 35, 63, 68, 73, 80, 81
 Nielsen, Howard C., 35, 69, 88
 Nielsen, John W., 52, 58, 59, 61, 62, 64, 68, 69, 76
 Nielsen, Merl Dean, 35, 85
 Nygaard, Gerhard J., 35, 63, 69
 Nygaard, Janice R., 35, 63, 68, 78
- O**
 Olesen, Robert E., 35
 Olsen, James W., 54, 87
 Olsen, Myrna M., 52
 Olson, Ordell M., 53, 61, 65, 70, 97
 Olson, Willis J., 35, 78
- P**
 Paine, Lois V., 35
 Parker, Robert J., 85
 Paulsen, Dorothy A., 42, 63
 Paulsen, Raymond M., 48
 Paulsen, Stuart R., 36, 88
 Pearson, William R., 42, 59, 93
 Pedersen, Harold, 36
 Petersen, Charles H., 36
 Petersen, Dale M., 36, 108
 Petersen, Elmer P., 36, 68, 78, 82, 87, 90
 Petersen, Eunice E., 42, 59, 63, 65, 68, 78, 82
 Petersen, Howard P., 42, 62, 74, 75, 88
 Petersen, Reuben L., 36, 85
 Petersen, Virginia A., 36, 61, 63, 68, 70, 80
 Peterson, Dale A., 36, 85, 88, 90
 Peterson, Ferne M., 36, 63, 78
 Peterson, Margaret A., 36, 61, 63
 Poh, Donald A., 36, 78
 Poulson, Oliver K., 36, 62, 85
- Q**
 Quist, Patricia J., 36, 63, 73, 76
- R**
 Raben, Ivadell H., 42, 59, 61, 63, 68, 70
 Rasmussen, Albert E., 36
 Rasmussen, Esther R., 36, 63, 80
 Richter, John R., 36
 Robinson, Charles J., Jr., 85
 Robinson, Clifford N., 62, 85, 88, 89, 90
 Romer, Alice L., 47, 73, 76, 78, 97
 Rouse, Don A., 42, 62, 85, 90
 Rudolph, Ariene M., 36, 63, 78
- S**
 Scheel, Beverly J., 37
 Schmidt, Betty, 42, 63, 73, 75, 93
 Schou, Donald D., 43, 62, 68, 85, 91, 112
 Schou, Harold A., 36, 88
 Seybold, Dorothy M., 37, 61, 63, 80
 Simon, Paul M., 43, 61, 65, 73, 74, 75, 78, 111, 112
 Skobo, Mary C., 37, 63, 78, 92
 Skobo, May E., 37, 61, 63, 80
 Smith, Jack F., 43
 Solevad, Elizabeth H., 43, 65, 74, 75, 97
 Solevad, Ruth E., 37
 Sorensen, Arthur W., 43, 62, 68, 78, 82, 84, 85, 90, 91, 111
 Sorensen, Eldon R., 37
 Sorensen, Ewald T., 47, 69
 Stanley, Niel K., 85
 Stone, James A., 48, 59, 68, 97
 Sutherland, Vivian J., 37
- T**
 Tange, Reynold H., 52, 73
 Thompson, Lila J., 37
 Thomsen, Ella W., 37, 63, 70, 80
 Thorslev, Paul K. L., 69
 Thorslev, Peter L., 37, 69, 78
 Tripp, William K., 37, 85
- V**
 Vaaler, LeOtis M. K., 37
 Vammen, Dorcas J., 37, 63, 80
 Vaughan, Abbie Ann, 47, 63
 Videbeck, Richard, 43, 58, 73, 74, 75, 93
 Videbeck, Robert E., 43, 58, 69, 73, 75, 81
 Viere, Mark C., 37, 90
- W**
 Weaver, Kenneth D., 43
 Wesin, William D., 37
 West, E. Jean, 43
 Williams, Rita V., 43
 Wilson, Darrel E., 37, 62, 85, 88
 Wilson, M. Russell, 54, 75
 Winther, Norman M., 37, 68, 90
- Y**
 Youmans, James H., Jr., 37, 62, 85, 88, 89
- Z**
 Zimmerman, Richard D., Jr., 62, 85

ADVERTISERS

Without the co-operation of the business firms and professional men of Blair, Fremont, and Omaha, it would have been impossible to publish *The Danian* in this enlarged and more pictorial form.

We take this opportunity to express to our advertisers our sincere appreciation for the support we have received from them in the project of publishing this annual.

It is the hope of *The 1947 Danian* staff that Dana College and the city of Blair may continue to cooperate to their mutual advantage.



AERIAL VIEW OF BLAIR

Compliments of

The Blair Chamber of Commerce

ATLantic 3444

**John F.
Murray Studio**

Fine Photography In Our Studio
Or On Location

318 So. 19th St.

Omaha, Nebr.



*"Clothing and Shoes
For the Lad and His Dad"*

- Whembley Ties
- Janitzen Swim Suits
- Munsing Underwear

Blair Clothing Co.

Compliments

of

3 3 3

**Christensen
Lumber Company**

Nelson Electric Co.

Artistic Lighting Fixtures
and Electrical Appliances

1309 Farnam St.

Omaha, Nebr.

We Hope You Will
Make Your Home in Blair —

— If You Do —

We Want You to Be
Our Client

Blair's Largest and Oldest
Insurance Agency

G. L. Dixon Company

Phone 201

Blair Nebraska

"An Agency Established by
Unequaled Service"

— FOR —
HARDWARE, AUTO ACCESSORIES
AND HOUSEHOLD APPLIANCES

SEE

Henry Lattman, Owner

Gambles
The Friendly Store

Expert Shoe Repairing
Sheffler Harness Co.
Quality Sporting Goods

Compliments
of
Gossett's Cafe
Opposite Fremont Theatre
in
Fremont

*“Don't Forget
To Call
The Folks”*

Blair Telephone Co.

HAUFF
Sporting Goods Co.

A. G. Spaulding & Bros.
Athletic Equipment

1307 Farnam St.

Omaha

Roy E. Dudgeon Appliances
PLUMBING, HEATING
and
ELECTRICAL APPLIANCES

Phone 297



INTERIOR LPH BOOK SHOP

Compliments
of
Lutheran Publishing House

Guyer and Hansen

Formerly N. T. Lund & Co.

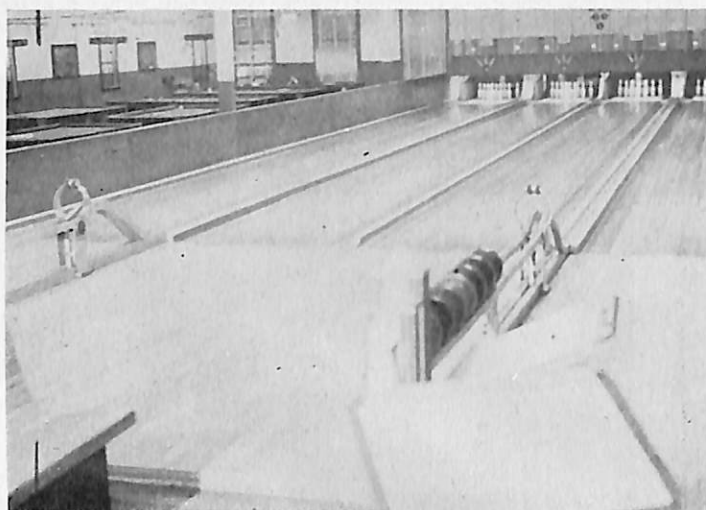
REAL ESTATE, LOANS
BONDS

"Insurance of All Kinds"

H. Lyle Guyer

P. V. Hansen

Phone 478



Compliments

of

King's Recreation Center

Blair

Nebr.

Von Lanken's Apparel Shoppe

"QUALITY MERCHANDISE
AT POPULAR PRICES"

Hermes

The Messenger from Dana

Congratulates The DANIAN Staff
On a Job Well Done

Seniors and Alumni:

Order HERMES sent to you for the entire
1947-48 School year at the price of \$1.50.

Editor 1946-47
Paul C. Larsen

Compliments

Blue Goose Super Store

Blair's Leading Food Store

Samson Drug Store

PRESCRIPTIONS FILLED

Complete Line of

DRUGS and COSMETICS

The Rexall Store

Clyde Nelsen Skelly Service

"Where Service Means Something"

STATION AND TANK WAGON SERVICE

Phone 396

Compliments

OF

Advance Cleaners

PHONE 29

Max Bain Barber Shop

Service with Satisfaction.

Compliments of

Harkers Roller Rink

16th and Bell, in Fremont

Melvin C. Harker

The Tyson-Long Implement Co.

John Deere Farm Equipment —

Dodge, Plymouth

— Stores in —

BLAIR — HERMAN — TEKAMAH

COMPLIMENTS

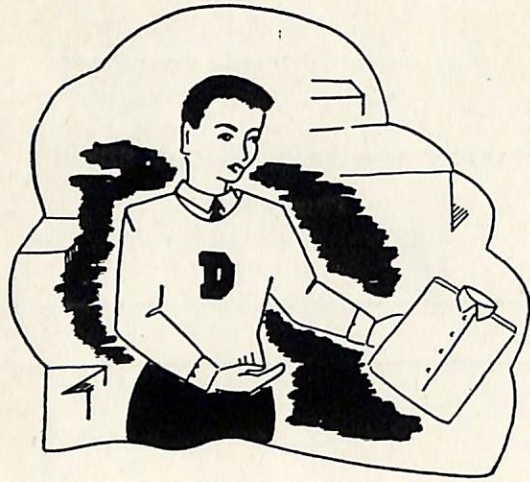
of



Texaco Service Station

AL ENGER, Manager

Blair, Nebr.



**S
t
r
u
v
e
s**

For that
Well Dressed Look:

Take Your Shirts
And Laundry Needs
To the Home of
Quality Laundry
Service

**Home
Laundry**

Rounds Super Service

Phillips "66" Products

COMPLETE LINE OF
AUTO SUPPLIES



Phone 128

Blair Drug Co.

John H. Christensen

DRUGS and FOUNTAIN SERVICE

We Specialize in Prescriptions



Johansen Flower Shop

"Flowers and Gifts

for all occasions"

Kris Johansen, prop.

Phone 47

COMPLIMENTS

of

Blair Bridge

on US Highway 30

PETROW'S
Restaurant and Confectionary

Congratulates

DANA COLLEGE

Stewart Pharmacy

Quick Dependable Prescription Service

Phone: 87

**THE
EAT SHOP**

24 Hour Service

Washington County Motors

CHRYSLER

PLYMOUTH

Blair

Phone 432

Nebr.

Blair's Leading Attraction

The Home Theatre

"Service on the Street and in Theatre Lobby"

The Candy Shop

CANDIES

POPCORN

ICE CREAM

Zenith

And

BENDIX RADIOS

•
RECORDS
Top Tunes
Latest Releases

•
**Home Furniture and
Appliance Store**

Your Frigidaire Dealer

Nelson Bros. Clothiers

The Leading Store

For

Blair and Dana College

BRING YOUR CLOTHING NEED TO US

Compliments of

CLIFTON HOTEL

C. A. Robeson, Manager

L. C. KLOPP

JEWELRY and GIFT STORE

GIFTS FOR ALL

Watches Gifts Repairing

Ove T. Anderson

Paul M. Fisher

Compliments of

Ove T. Anderson & Co.

Bonded Abstractors

REAL ESTATE, LOANS and INSURANCE

Washington Co. Bank Building
Blair, Nebr.

The Pilot-Tribune

had been established as Blair's leading weekly newspaper almost a generation before Dana was founded.

Once more it is the Pilot-Tribune's pleasure to congratulate another graduating class at Dana.

Our best wishes go with you. May you always remember your pleasant days as students in Blair.

"Nebraska's Champ Weekly"

BLAIR, NEBRASKA

Rabbass Studio

Photos of Quality

We Wish to Thank the
Students and Faculty of Dana
For Their Patronage

For the Best in . . .

Hardware — Tools

Auto Accessories

Electric Appliances

Houseware



Locally Owned - Nationally Advertised

W. B. JOHNSON, Owner

Phone 455

COMPLIMENTS

of

Dexterville Store

Open 7 Days a Week

Petersen's Service

GAS—OIL—BATTERY SERVICE

Phone 21

Blair, Nebr.

Blair Flour Mills

Sorensen Bros.

FLOUR . FEED . CEREALS . SALT

Phone White 223

Blair, Nebr.

Kolterman's New

BEN FRANKLIN STORES

ALMOST EVERYTHING FOR
COLLEGE STUDENTS

5c — 10c — \$1.00

**"EVERYTHING
IN MUSIC"**

- PIANOS
- ORGANS
- RECORDS
- SHEET MUSIC
- RADIOS
- PHONOGRAPHS
- BAND INSTRUMENTS

**SCHMOLLER
& MUELLER**

1514-16-18 Dodge St.

OMAHA

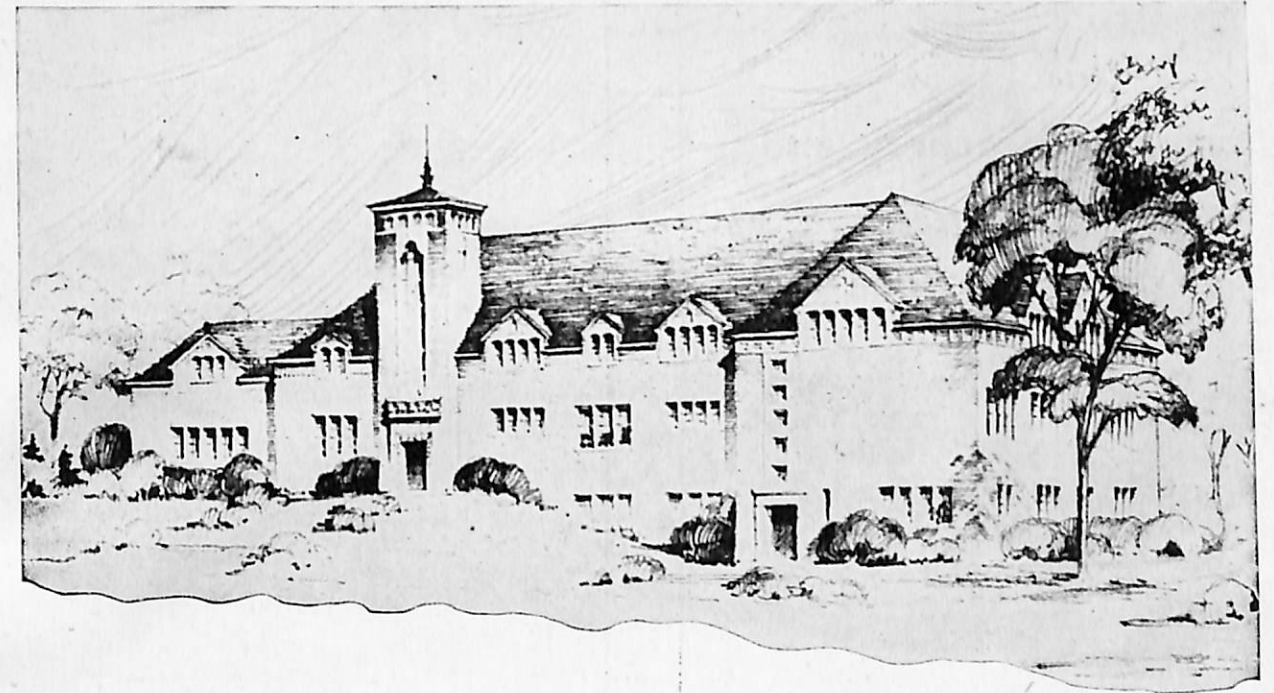
Betty's Gift Shop

Gifts of Distinction

See Us for Any
BUILDING or FUEL SERVICE

**Blair Lumber Coal
and Grain Co.**

Phone 4



New Administration-Library Building

to be erected at

DANA COLLEGE

and

Trinity Seminary

**Gaydou Hatchery and
Poultry Farm**

HOME OF

**"GAYDOU'S SPECIAL WHITE"
LEGHORNS**

Ted's Market

"Ted (Kutsch) wants to see you?"

PHONE 300

Compliments

of

Dr. Edwin T. Jipp
Office in Garrison Building

Phone 298

**GOOD FOOD
COURTEOUS SERVICE**

at

Robinson's Cafe

WHERE STUDENTS
AND YOUNG PEOPLE
ARE ALWAYS APPRECIATED

CLOTHING and SHOES

for the

ENTIRE FAMILY

at

*Brown
McDonald's*
Where Good Style
Costs Nothing Extra

COMPLIMENTS

OF

Dr. Ehlers

"Your Symbol of Savings"



**R. E. Vinton & Sons
Chevrolet Co.**

Blair, Nebr. Phone 219

We neither push nor ignore any one phase of Banking. We aim to provide a Complete Banking Service that will take care of all the Financial Requirements of this community.

All our services are important to us, and so are all our customers.

Washington County Bank

Blair, Nebraska

MEMBER
FEDERAL DEPOSIT
INSURANCE CORP.

Compliments

of

Blair Professional Men

Here are the details of your 1947 DANIAN:

- cover and section division pages designed by Elizabeth Solevad; cover manufactured by Universal Bookbindery.

- title page aerial photograph of campus by Richard Videbeck.

- photography by

Murray Studio, Omaha (classroom and scenic)

Rabbass Studio, Blair (portraits)

Richard Videbeck and assistants (groups and college events).

- set in Granjon type, with captions in Excelsior bold and page headings in Bernhard light Gothic types.

- printed on Warren's Cumberland gloss paper.

- halftone cuts and zinc etchings by East Texas Engraving Company and Nonpareil Photo-engraving Company.

- printed and bound at Lutheran Publishing House.

- winning entries in photography contest:

First prize: Informal photo of Joan Andersen on page 112 by Mark Viere.

Second prize: Photo of Alumni Memorial on page 13 by Edna Jensen.