



# 1975 danian



## dana college blair, nebraska volume 49

index:

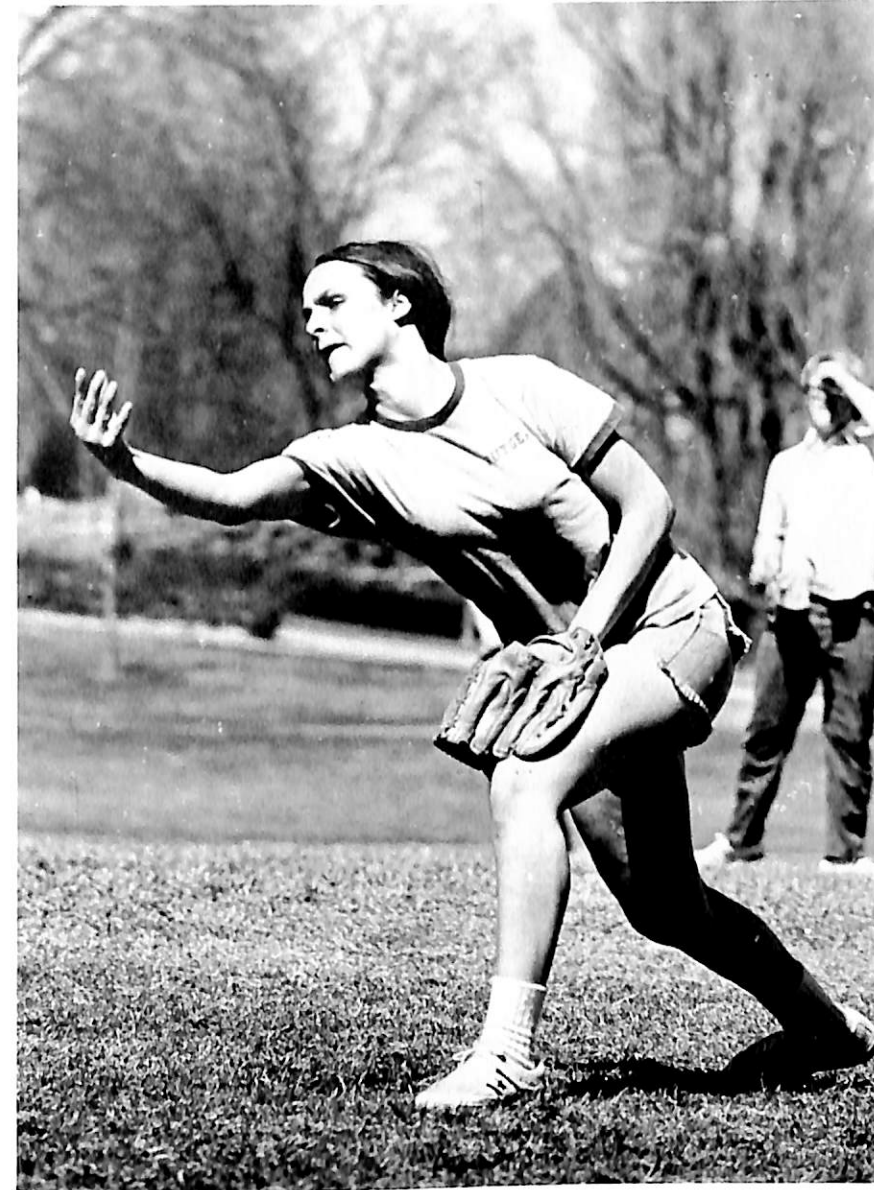
- opening ..... 2
- special events ..... 12
- sports ..... 36
- organizations ..... 54
- faculty ..... 86
- students ..... 104
- advertisements ..... 145

explore  
dana



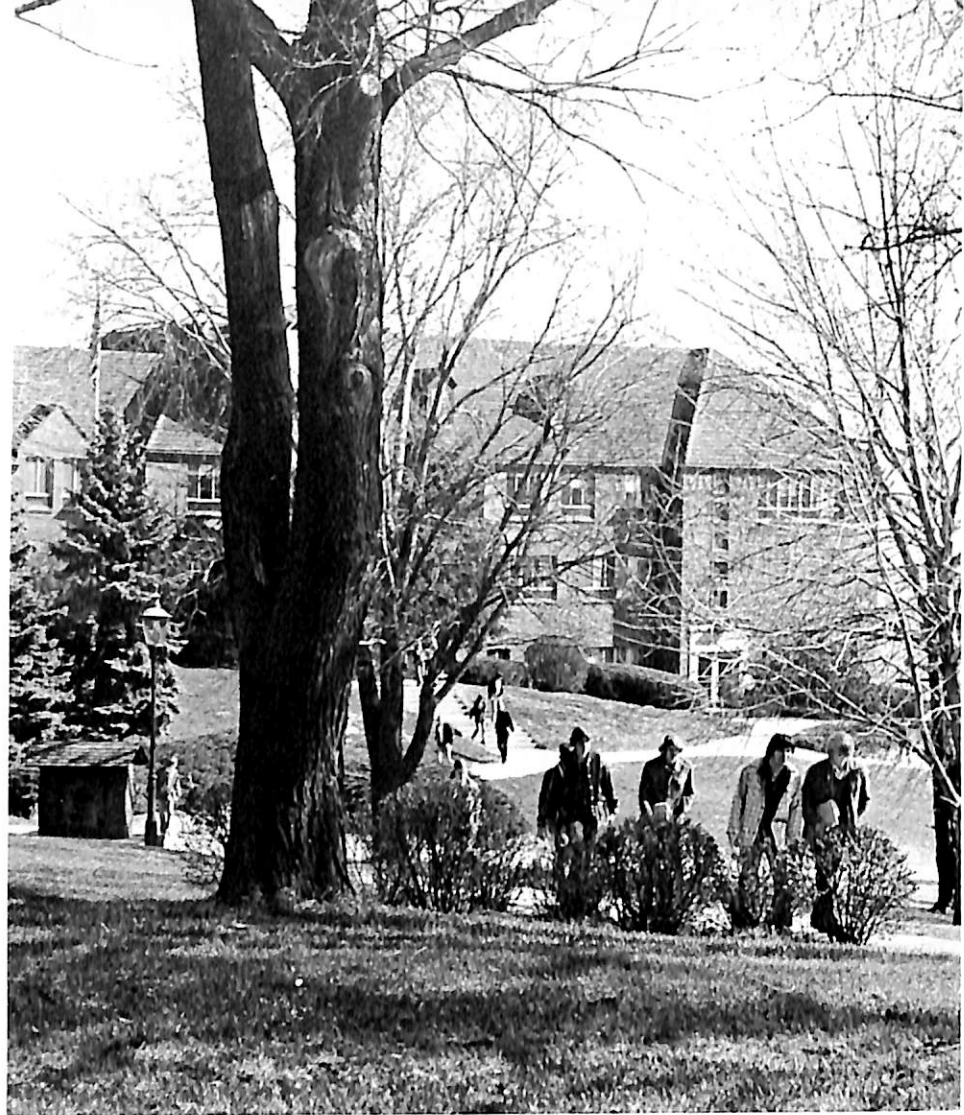
its jubilation





its people





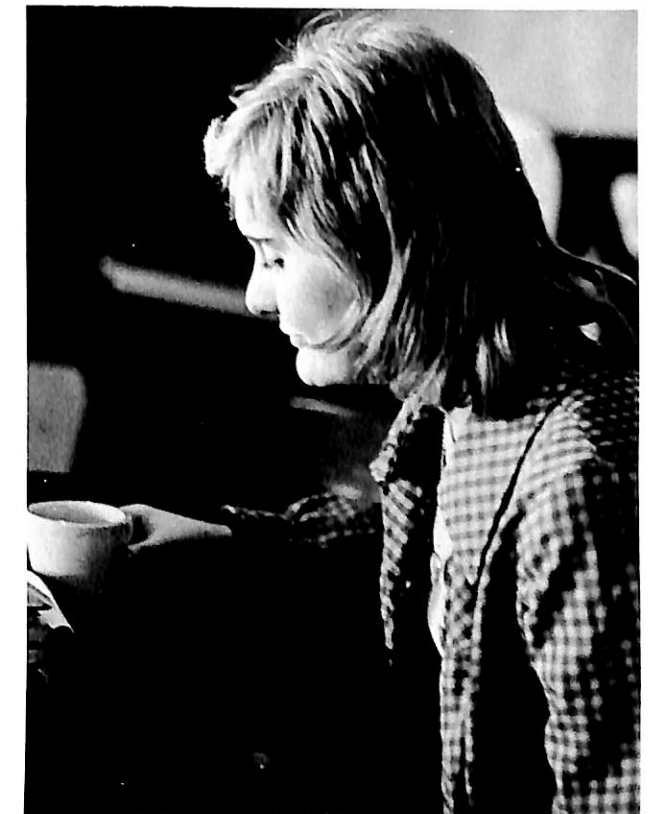
its food for thought



its spirit



its revelations





special  
events

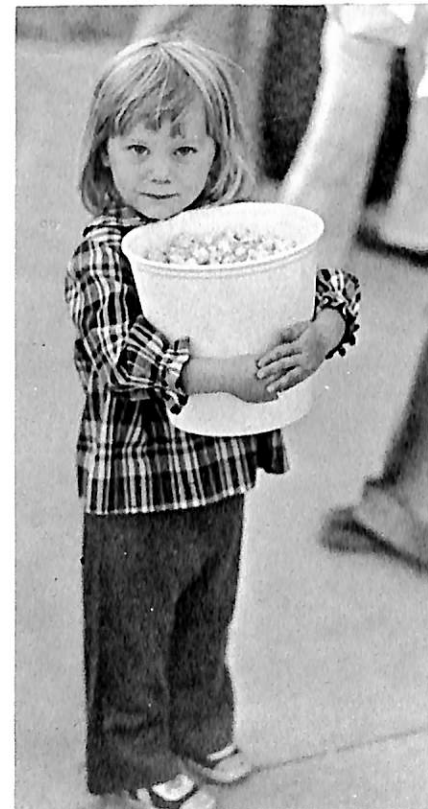




# homecoming



Music, dance, queens, alumni, football, aebleskiver, and popcorn all prevailed on Homecoming Weekend. The theme "A Million Miles of Music" honored Choir Tour Alumni and commemorated the fiftieth anniversary of the tours. "Music on the Mall", an outdoor program Friday eve, included such campus talent as Stage Band, Choir, and Dana Folk Dancers. The evening was highlighted by the crowning of a new Homecoming Queen, Diane Kniep from Aurora, Colorado. The Homecoming Court was presented at the football game Saturday afternoon and Saturday evening included a banquet that was highlighted by a performance of Choir members-past and present. The evening ended with a dance, and the weekend was called to a close Sunday morning at an alumni church service in the Alumni Memorial Auditorium.



UPPER RIGHT: Dr. Neve is honored at the "Million Miles of Music" banquet. RIGHT: Little Kim Jorgensen especially enjoys the free popcorn. ABOVE: Tour Choir Members, old and new join forces in an enjoyable program at the banquet.



UPPER LEFT: Queen Candidates (STANDING) Diane Kniep, Kathy Anderson, Mary Staby, (SITTING) Lori Brown, and Diane Larson. ABOVE: Queen Candidates and their escorts enjoy the "Music on the Mall" program before the crowning of Homecoming Queen. LEFT: Melissa Vakshall keeps busy passing out free popcorn and Andy Barber keeps busy eating it.

million  
miles of music



TOP RIGHT: Tim Waggoner, Lance Poldberg, and Walt Schacht show their strength while setting up for the "Music on the Mall" program. CENTER RIGHT: The Dana Folk Dancers provide vigorous entertainment for the evening program. RIGHT: The Dana Stage Band sets the atmosphere for "Music on the Mall". ABOVE: Dana's unnamed male quartet including: Paul Hundtoft, Greg Witte, Jack Martin, and Mark Heistand sang a selection of barbershop type songs.



TOP LEFT: Lovely Homecoming Queen Diane Kniep and her handsome escort Mike Urdahl. ABOVE: "The Smith Brothers" band provide a million miles of rock music for the Homecoming Dance. LEFT: Some students enjoy Danish pastries at the annual aebleskiver feed.

# no, no, nanette



TOP: Kathy Lizer sings "Too Many Rings Around Rosie" to male chorus members: Paul Hundtoft, Larry McMahan, Dennis Lee, and Tom Walker. RIGHT: Nanette and Tom (Jean Marie Nielsen and Roger Schmidt) vow to marry right after Nanette "raises a little hell". ABOVE: Rosie explains the virtues of married life to female chorus members Sheri Pond and Nancy Hansen.



The Musical Production of No, No, Nanette was presented in Alumni Memorial Auditorium November 15, 16, & 17. It was a nostalgic revival play of a Bible salesman's attempt to rid himself of three voluptuous young women to whom he had been overly generous. The action becomes even more complicated when everyone arrives at his Atlantic City beach house. The romantic entanglement is resolved when his wife realizes he is innocent of everything but a kind heart.

LEFT: Tom (Roger Schmidt) shows Rosie (Kathy Lizer) and Sue (Sue Walth) the engagement ring he bought for Nanette. BELOW: Billy (Tim Waggoner) makes his grand entrance only to find Jimmy and Sue (Steve Berke and Sue Walth) preoccupied, and Pauline, the maid (Jean Wood) bidding farewell.





RIGHT: Troubles arise for Jimmy (Steve Berke) when Flora from Frisco (Carol Morgenstern) arrives . . . (BELOW) and triples when Betty from Boston and Winnie from Washington (Karen Madsen and Debbie Jenner) also arrive.



LEFT: Billy (Tim Waggoner) takes a closer look into the situation at hand. BELOW: Nanette entertains friends, (Chorus members left to right: Paul Hundtoft, Connie Gerlt, Sheri Pond, Dennis Lee, Nancy Hansen, Larry McMahan, Tom Walker, and Peggy Hansen) at a beach party.





## sights and sounds of christmas



OPPOSITE PAGE TOP-Majestic Tower of Old Main through snow covered branches.

OPPOSITE PAGE LOWER LEFT-The Danish Christmas Tree which adorned the Library during the Christmas season.

OPPOSITE PAGE LOWER RIGHT-Girls from the Danish club and choir perform the Traditional Santa Lucia Candlelight Ceremony.

RIGHT-Alumni Christmas Service with Pastor Pietz and Steve Berke officiating.

BELOW-Students at the Christmas Banquet were served by faculty and administration members. Here are Dean Palm and Mike Jones hard at work and enjoying it.



"The Sights And Sounds of Christmas, 1974" was a special time for many to remember. Many alumni were "home" visiting and parents of students also graced our campus. The afternoon was filled with music and dancing provided by Dana Folk Dancers, Dana Choir and Dana Band, led respectfully by Lance Poldberg, Dr. Neve, and Dr. Wise. Then in the evening there was a dinner of delicious food from Danish and German heritage. During this whole Christmas season a Dana student, faculty, or visitor never failed to see smiling faces and a Danish Christmas Tree!



OPPOSITE PAGE TOP: Diane Larsen garbed in her Dana Folk Dance apparel. OPPOSITE PAGE BOTTOM: Dana Folk Dancers at their glory. ABOVE: The Dana Choir and the Dana Band provided entertainment for the afternoon program. RIGHT: One of the many sights at Dana during the Christmas Season.

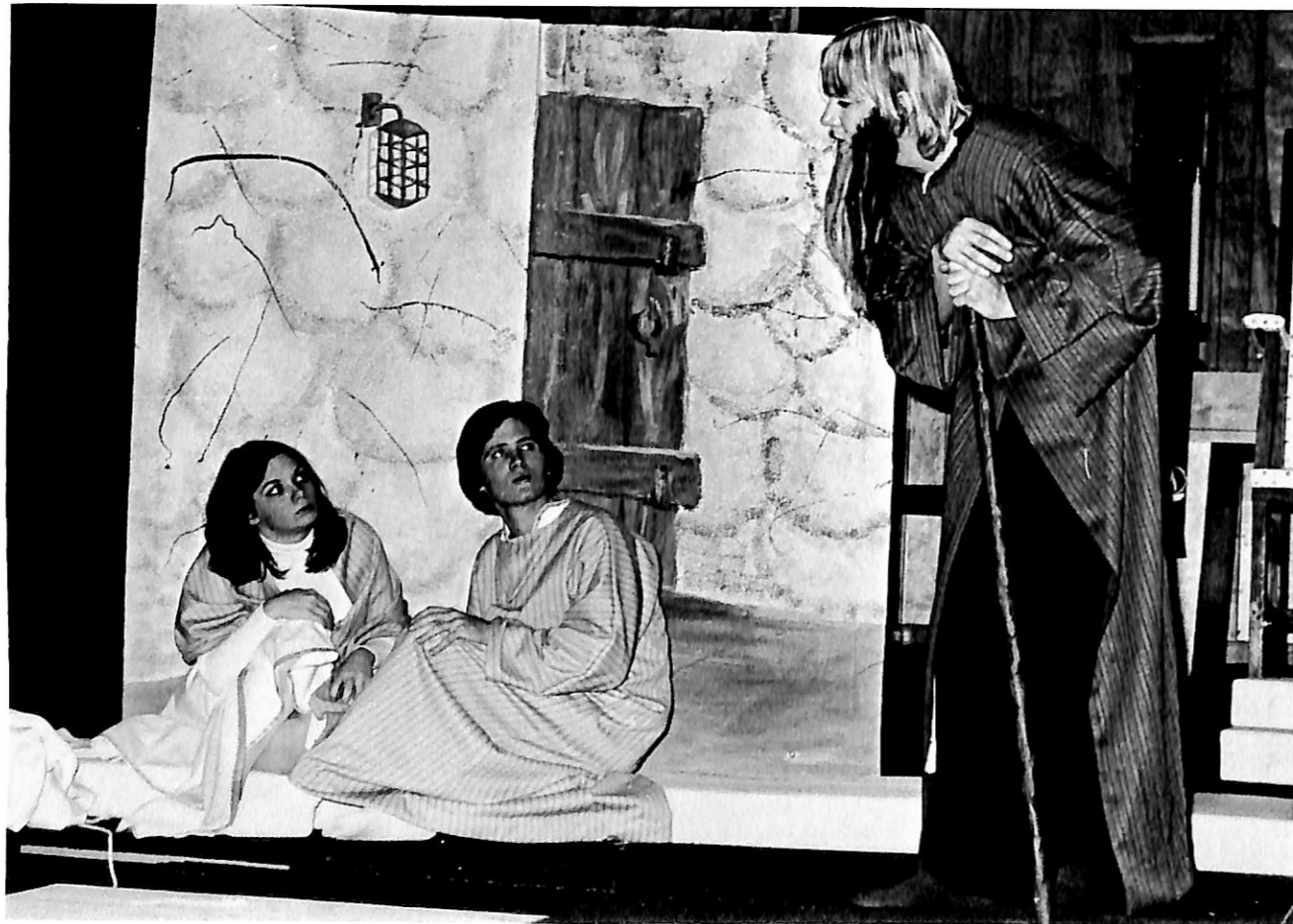
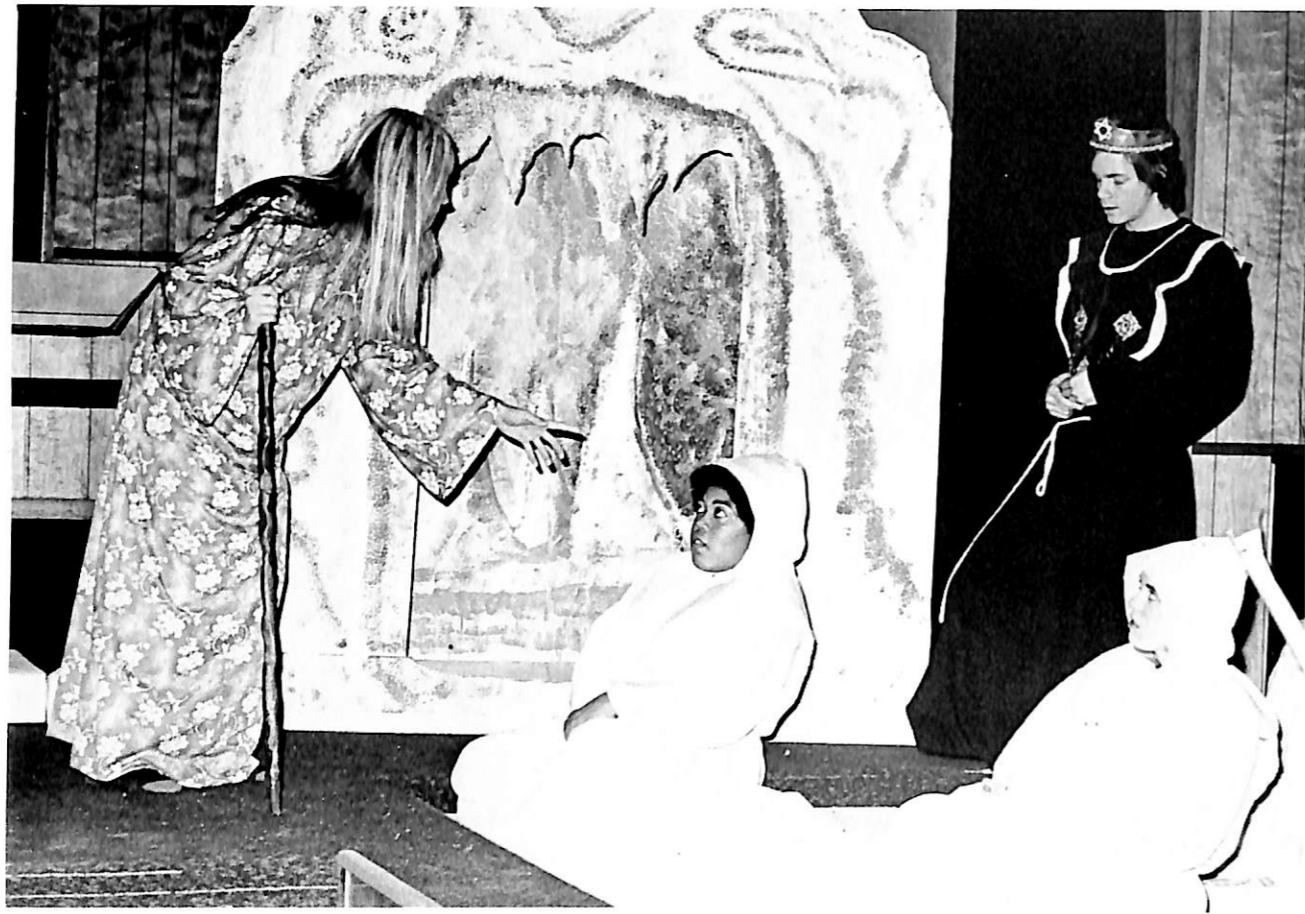


# salvation a chancel drama

During Interim a group of Dana Players prepared and presented a chancel drama entwined in a worship service. Based on the Wakefield cycle of medieval mystery plays, SALVATION expresses man's ageless concern for fending eternal meaning for his life. After showing man's initial estrangement from God in the Garden of Eden, the dramatic piece traces the prophetic proclamation of the Messiah. By performing a dramatic representation of Scriptural truths, the Dana players hope to set forth vividly the central message of the Gospel: that man, estranged from God and from himself, is offered salvation through the New Being as represented in Jesus as the Christ. The members of the cast included: Mercedes Ahrens, Don Baack, Steve Berke, Gary Boeck, Janis Boyce, Bob Bresemann, Paula Christensen, Constance Gibson, Debbie Jenner, Renae Johnson, Dennis Lee, Karen Madsen, Larry McMahan, Sheryl Pond, Donna Reque, Roger Schmidt, Jon Videbeck, Tim Waggoner, and Sue Walth. Mr. Dennis Henneman was the director of the Interim and Dr. Alan Brandes wrote special music for the cast. The cast toured in Western Nebraska and in Colorado for seven days, as well as presenting the drama on campus before departing on tour.



ABOVE-The saints sing praises to God  
LEFT-Satan tempts Eve

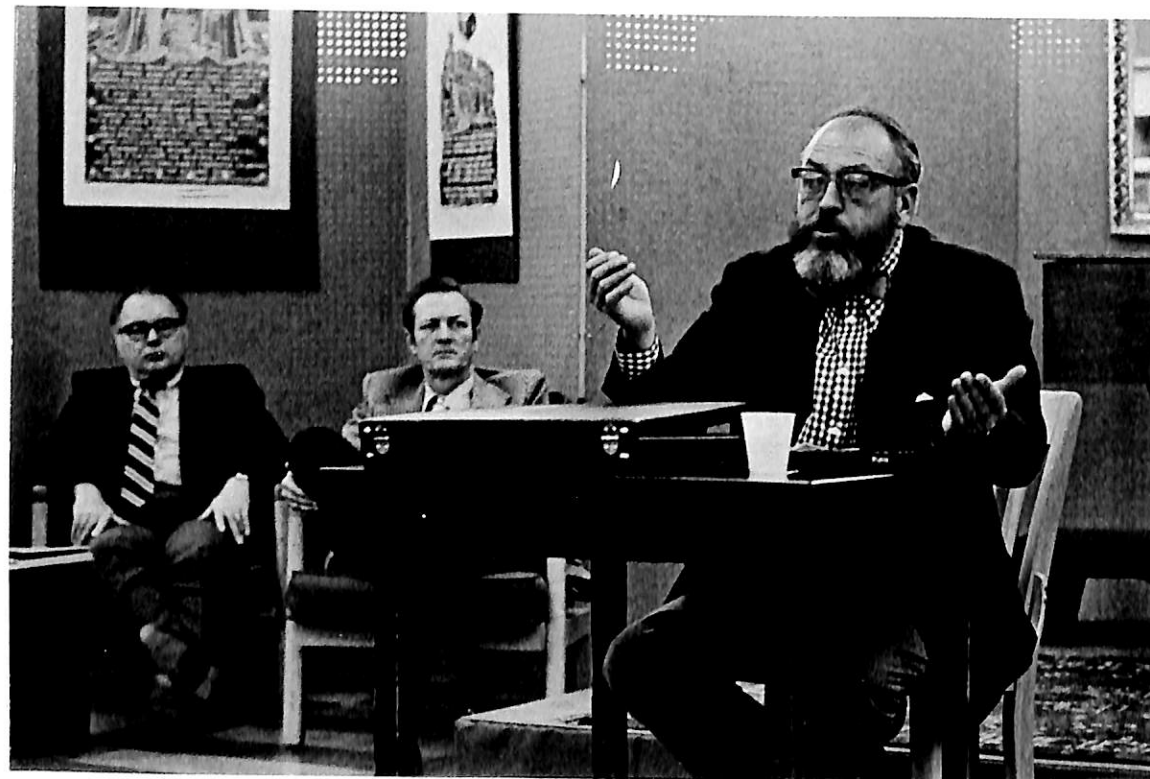
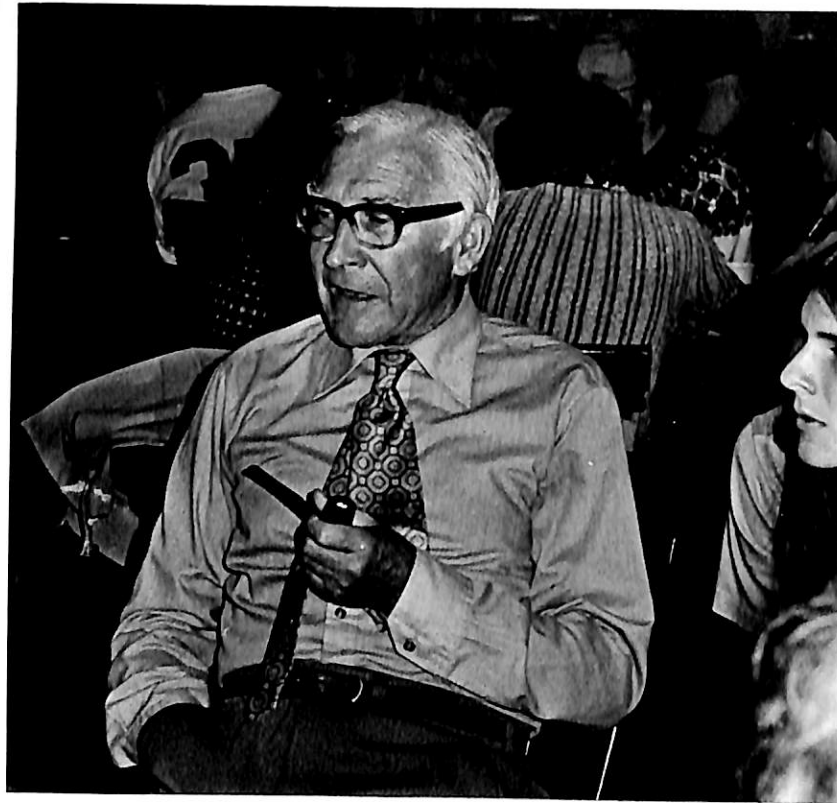


OPPOSITE PAGE UPPER: Sybil warns saints of the judgement. OPPOSITE PAGE LOWER: Moses delivers the Ten Commandments. ABOVE: The sinners tremble with fear for hell is quaking. LEFT: The devils try to challenge Christ.

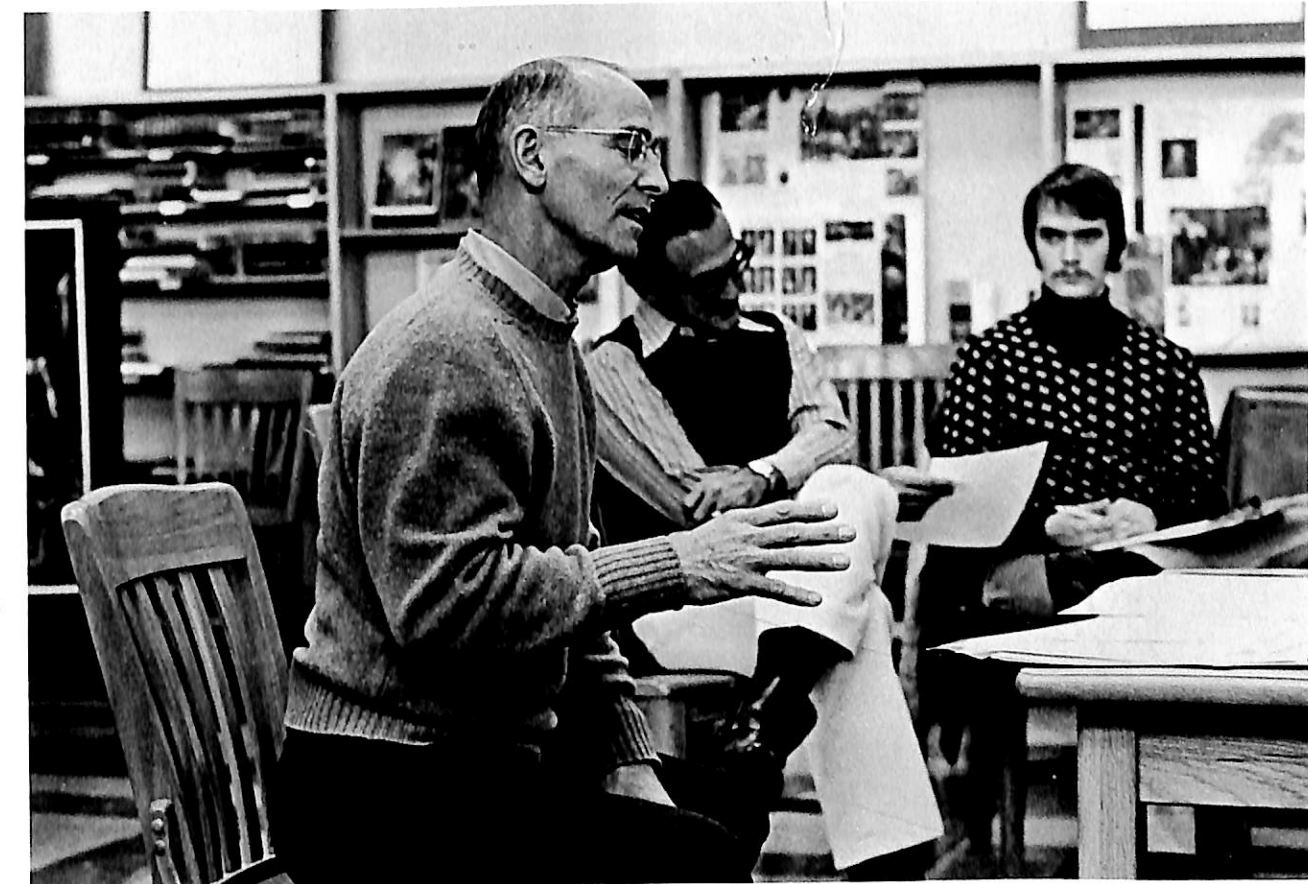


# parnassus speakers

Each year our famed Parnassus room is the setting for a number of interesting presentations by renown speakers. Pictured here are just a few of the many who graced our campus this year. Sir Herbert Marchant, the English ambassador to Cuba and other countries, spoke in Parnassus, in the classroom and even as pictured here, in "the Head". Another speaker was Dr. Knud Helm-Ericksen, the Director of the Danish International Student Studies Division. Also, Commander Lloyd Bucher from the USS Pueblo, spoke to our students on his experiences on the Pueblo and with the Navy in general. Finally, the famed poet Joseph Langland, led a seminar on creative writing as well as reading his poetry to an enthusiastic crowd. Along with these speakers, there were others who also helped provide an enjoyable educational experience for many Dana students.



UPPER-Sir Herbert Marchant  
LOWER-Dr. Knud Helm-Ericksen



UPPER-Commander Lloyd Bucher  
LOWER-Joseph Langland

# pastors-in-residence

There were some unfamiliar faces on campus this school year. These faces included in a new program called "Pastors-in-Residence". With the aid of the Division of College and University Services of the American Lutheran Church, we sponsored fourteen conferences of the Central District of the American Lutheran Church. The aim of this program is to "establish the means by which pastors are able to relate directly and positively to the only A.L.C. College in the District". The pastors spent ten days on the campus in a give and take relationship to students, faculty, and administration.

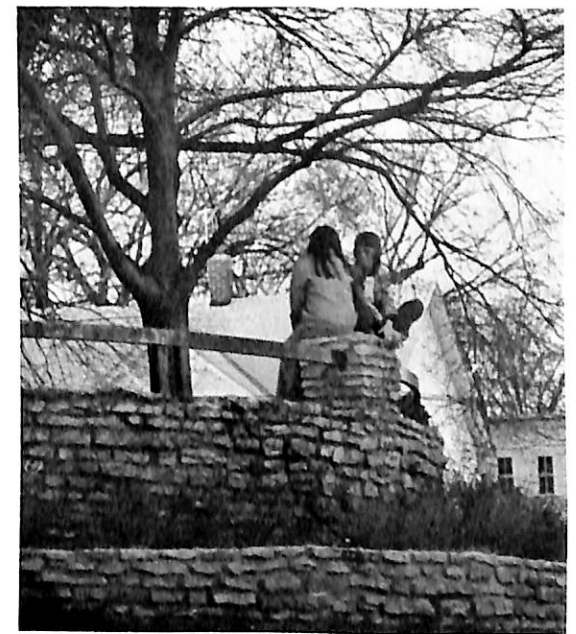
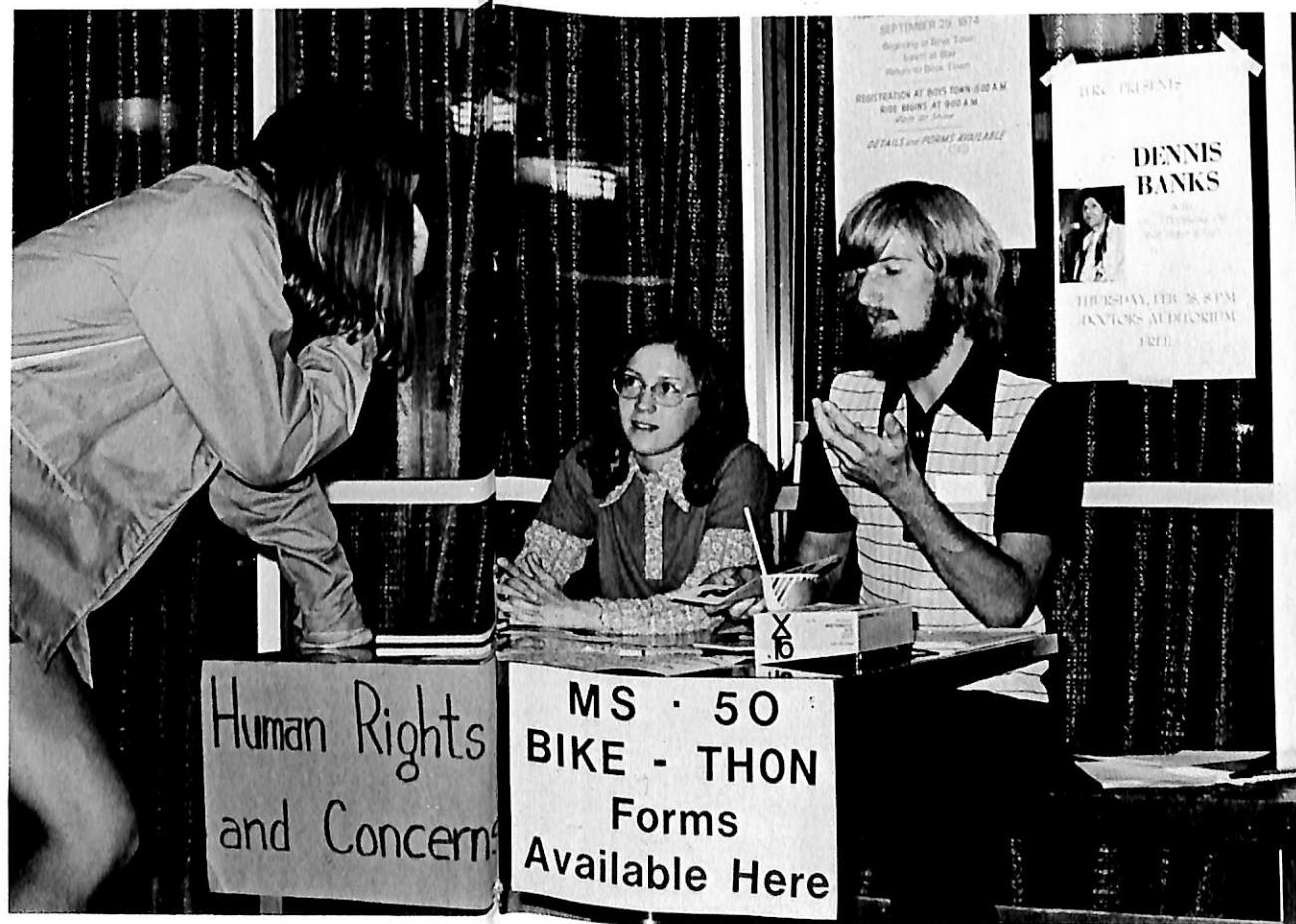


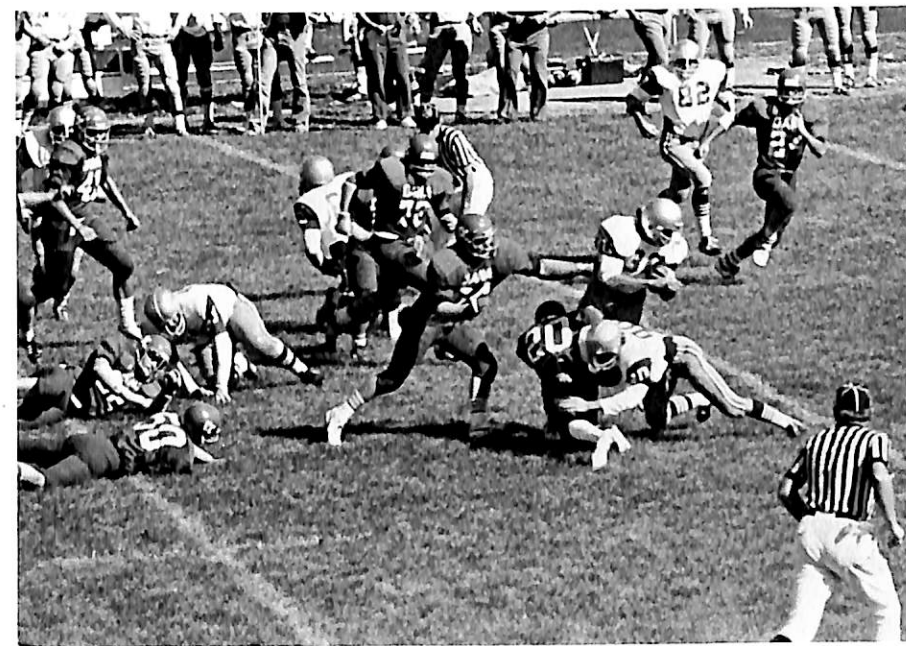
Pastor Robert Eller, Cozad, Nebraska



LEFT: Pastor Bruce Hermann, Golden Colorado  
BELOW: Pastor Elton Walth, St. Paul, Nebraska







sports

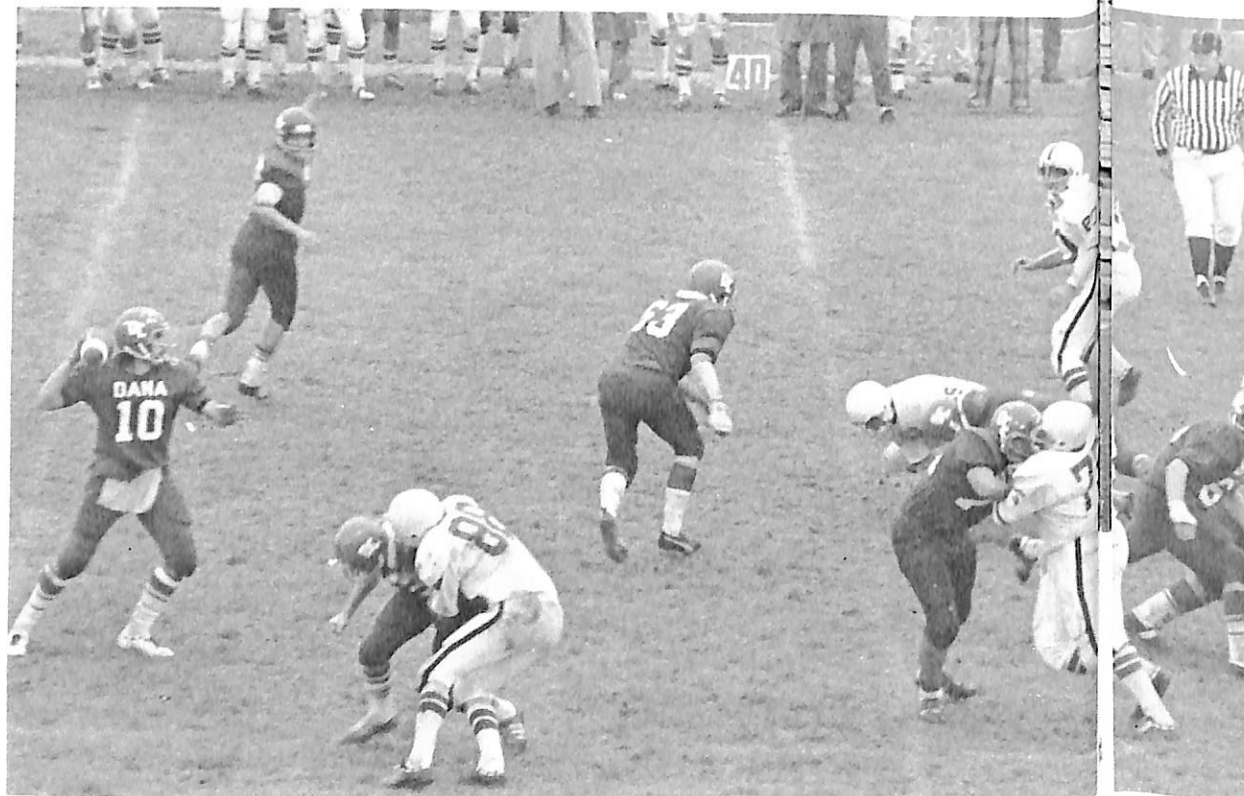


## john hibbing and bob jones named to all-conference team



AT LEFT: John Hibbing, junior wide receiver, swivel-hips his way through a mass of Westmar defenders after hauling in a pass. John led the Vikings in receptions and was named to the first team all-NIAC.

ABOVE; Dan Dye, junior defensive lineman hauls down a Westmar running back from behind as Terry Jensen, senior, comes in from the front. Jensen served as co-captain for the '74 squad and Dye was voted by his teammates to be a captain for next year's team. AT RIGHT: Quarterback Mike Urdahl (10) sets up in the pocket and searches for an open receiver. The interior offensive line, headed by all-conference selection Bob Jones, provide the pass protection.



These are the men who made up Dana Viking varsity football squad at the beginning of the season. They are: FIRST ROW; Ed Spicer, Mac Hadley, Scott Hodges, Steve Stillings, Mike Herbert, Terry Jensen, Mike Winslow, Bob Mountain, Scott Thayer, student Manager Brad Larsen, SECOND ROW; Rod Anderson, Todd Roecker, Doug Meggison, Gene Dollen, Bruce Goolsby, Dennis Downard, Kenny Jasa, John Videbeck, John Hibbing, Tim Talmadge, Steve Jones, Gary Redel, THIRD

ROW; assistant coach Teb Ginger, Doug Fecht, Dan Dye, Lowell Peterson, Rod Jasa, Clayton Pfeuffer, Bob Jones, Jerry Wilke, Mark Sorensen, Dave Hastings, Tom Gurnett, Robin Reynolds, Tony Thielen, head coach Gary SeEVERS, FOURTH ROW; Steve Christensen, Lindsay Niemen, Barry Schweer, Curtis Boeck, Al Schutt, Jerry Wallace, Gary Boeck, Jeff Thompson, J. J. Jenkins, Dave Larsen, and Mark Tiby.

BELOW: Mike Urdahl, junior quarterback, fights his way through a swarm of Concordia tacklers as Ed Spicer looks for a block. AT RIGHT: Terry Jensen (22) and Jerry Wallace (76) bring down a Concordia running back as Gary Redel (12) and Rod Anderson come in to help. The Vikings lost this Homecoming game to Concordia 13-6.



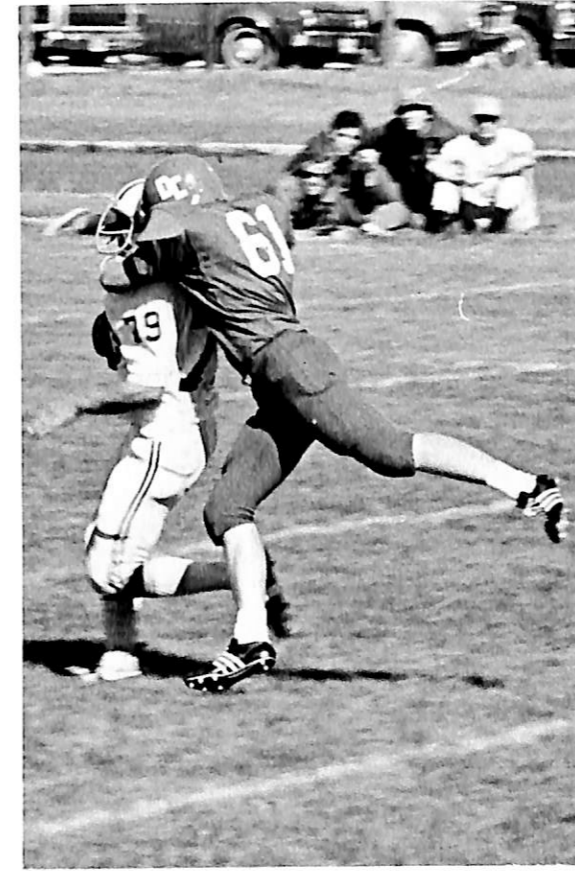
# young football team never gives up hope during winless year

The first game of the season ended in a 14-14 tie with Martin Luther College of New Ulm, Minnesota. Todd Roecker scored Dana's first touchdown and Ed Spicer the second. Martin Luther tied the game in the third quarter but Dana, behind quarterback John Videbeck, appeared to be driving for the winning score near the end of the game and were already within field goal range when a fumble on the five yard line with less than a minute left forced them to settle for a tie. The next week, the Vikings played Westmar College from Waverly, Iowa. Costly penalties and offensive turnovers let Westmar win the game 35-6.

The Vikings then traveled to Mitchell, South Dakota, to play Dakota Wesleyan University. Dana played its best offensive game of the season as Mike Urdahl came off the bench to throw two touchdown passes. The running of Dave Larsen also highlighted the game, but Wesleyan scored late in the game to insure a 35-20 victory.

The Vikings returned home the following week to host Concordia in Dana's Homecoming. The game marked the first time Dana's new head coach, Gary SeEVERS, had ever coached against his brother, the head coach at Concordia. A light rain fell throughout the game and made the field slippery but did not dampen the spirits of the Homecoming crowd. The Dana defense gave one of their best efforts, but the Vikings could capitalize on their opportunities, and went down by a score of 13-6. The Vikings then played Nebraska Wesleyan in a night game in Lincoln, Nebraska. The Vikes could never get rolling and lost a frustrating 27-0 decision.

The last three games of the season were lopsided losses at the hands of Midland, Doane, and Hastings. The Viking defense, forced to play the great percentage of the time in these games gave up a depressing total of 181 points in these last three games. Coach SeEVERS found encouragement, however, in the fact that the Vikings went into all of these games with the idea that they could win them and kept fighting until the final whistle blew.



ABOVE: Tony Thielen, freshman wingback, breaks away for a big gainer against Westmar College as his offensive line, headed by Jerry Wilke and Bob Jones cut down the Westmar defenders. Tony was one of five freshmen who started for Dana on offense. Todd Roecker, another freshman, and Mac Hadley, a senior alternated at tailback while Dave Larsen and Ed Spicer, a pair of upperclassmen, shared fullback.

ABOVE: Dave Larsen, senior fullback, makes a touchdown-saving tackle on a Martin Luther player who had intercepted a pass. Dave started the season at tackle but was moved to fullback for his running ability.

# soccer club finishes 2-2 in first season

Buiketlo Ponallo advances the ball between two defenders in a game against the University of Nebraska, which was played at Memorial Stadium in Lincoln.



Bill Plymale takes a pass from Ekanem Ekanem and moves the ball down the field in the game with Creighton.



1974 marked the first year that Dana College had fielded a soccer team. The team did not compete on an Intercollegiate level, but played club teams from other schools in the area. The team was sponsored by Mr. Mike Jones of the Admissions office.

The first game of the year was played at Dana's own Viking field and Dana defeated Creighton University 3-1. The Vikings then hosted Offutt Air Force Base and won this game by a score of 2-1. John F. Kennedy College then traveled to Dana and defeated the Vikings 1-0.

The final game of the season was against the University of Nebraska and was played on the astro-turf of Memorial stadium in Lincoln. Dana came out on the short end of a 2-0 score.



Charlie prepares to take a shot at the goal in the game with Nebraska as the rest of the team await the outcome. Dana lost the game 2-0.

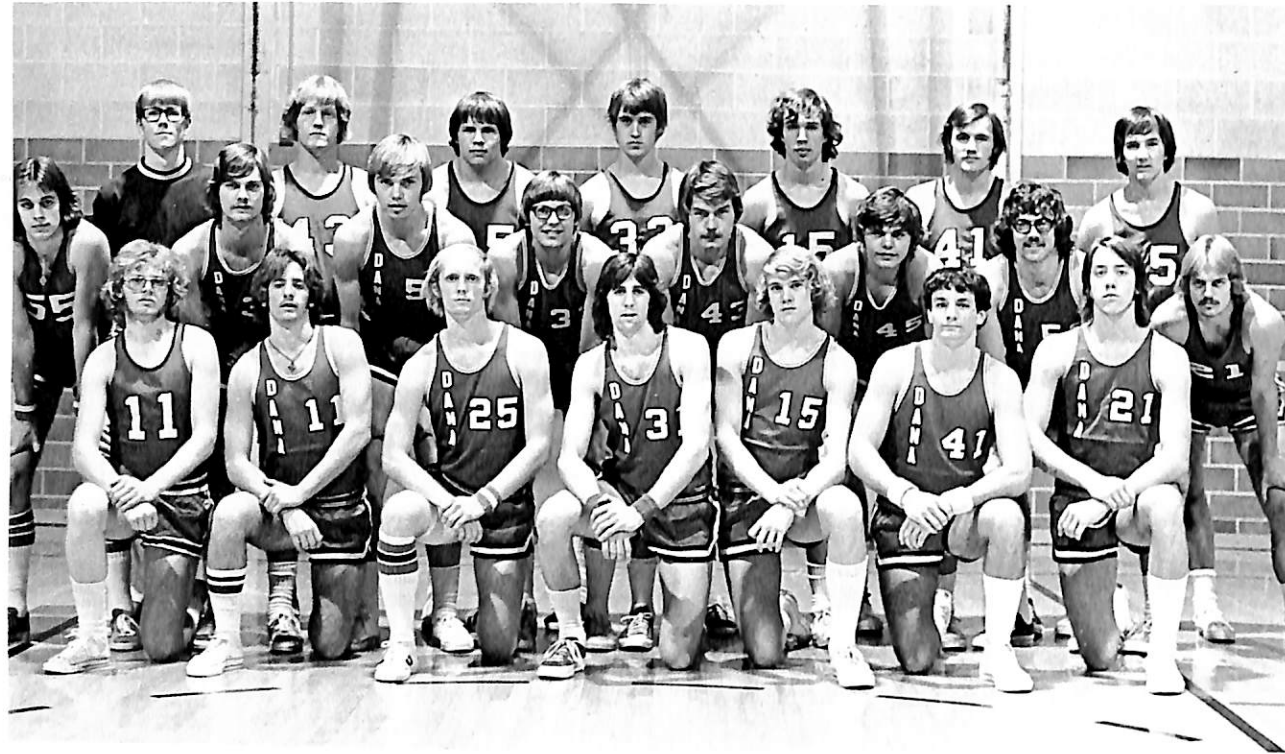


FRONT ROW; Ekanem Ekanem, Charlie Okosi, Buiketlo Ponallo, Emmanuel Achalu, Bill Plymale. BACK ROW: Roger Barrett, Ed Grube, Tom Sample, Dave Demant, Mike

Aludogbu, Jeff Malachifski, Justus Ike, Felix Okafor, Mike Jones - Sponsor.

# basketball team provides excitement

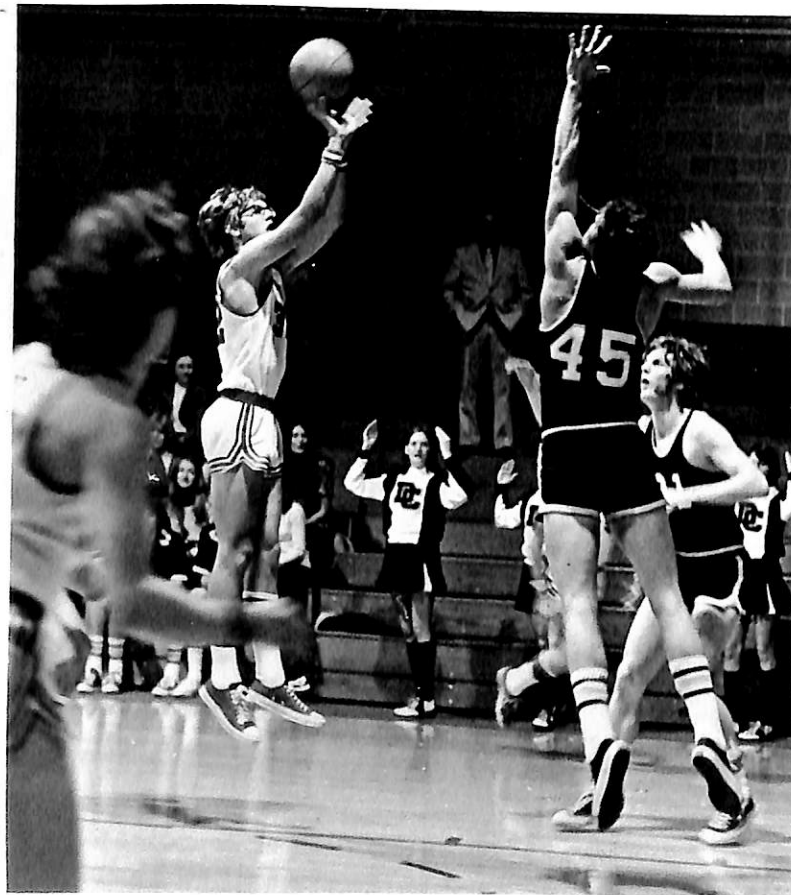
The 1974-75 Viking basketball team included: FRONT ROW: — Christensen; THIRD ROW: B. Larsen - manager, M. Berry, S. B. Baker, B. Davies, J. Hibbing, B. Kruder, S. Gustafson, T. — Christensen, J. Vohs, J. Andresen, B. Jepsen, and S. Heitmann. BROWNFIELD, T. LODES; SECOND ROW: C. Jensen, J. Larson, J. — Haas, S. Williams, S. Probst, B. Olsen, D. McGuire, M.



The Dana Viking basketball team was faced with a height disadvantage every time they took the court. The tallest player on the team was 6'4", but this didn't measure up to the highly competitive standards found in the NIAC conference. To make up for this deficit, the Vikings used a fast break offense and a tight defense to shackle their opponents.

Balanced scoring was a Viking trademark as any one of six or seven players might lead the team on a given night. Stan Gustafson and Tom Lodes, a pair of freshmen guards from Omaha, started most of the games late in the season and were ably backed up by Bill Davies and John Hibbing. Steve Probst, Barry Olsen and Steve Williams manned the forward positions and battled valiantly under the boards. Steve Thompson, became eligible at the semester and helped greatly.

LEFT: Stan Gustafson, freshman, drives the base line to drop in two more Viking points as the crowd, (BELOW), voices its approval.



Steve Williams, junior, launches a jumpshot.



Viking reserves watch the action intently.

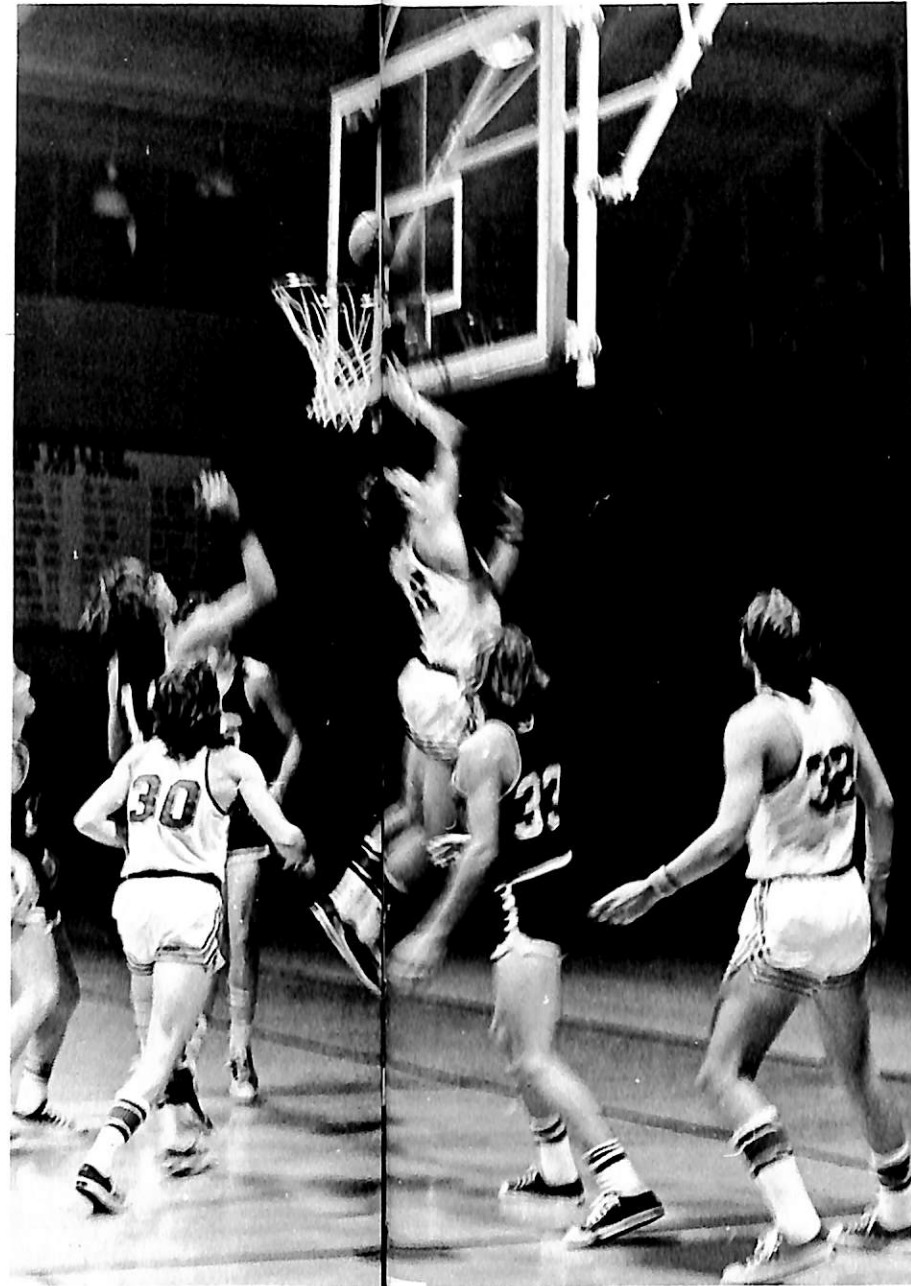




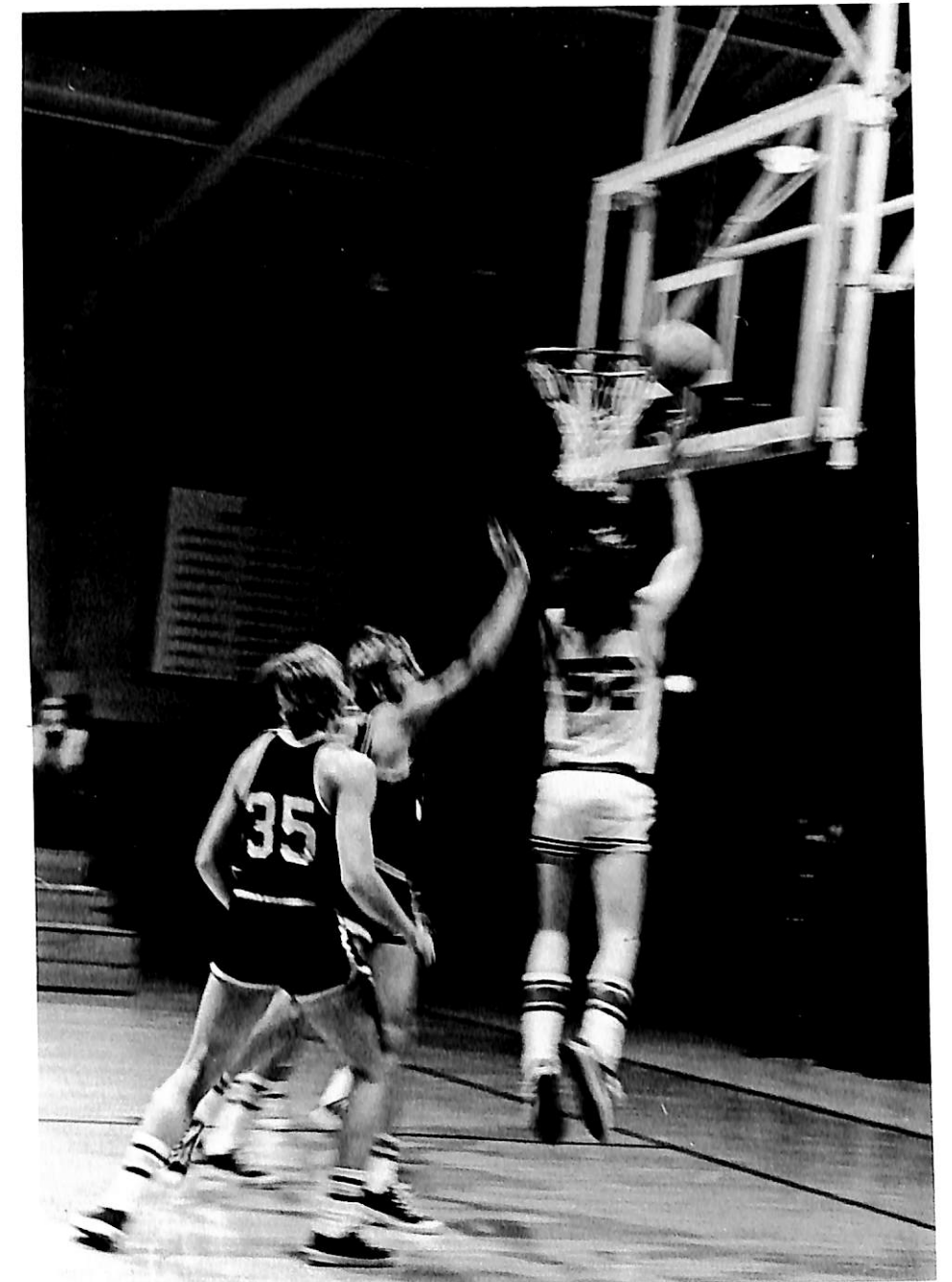
youth + desire + quickness  
the winning formula



Tom Lodes floats thru the opposing defense for a score.

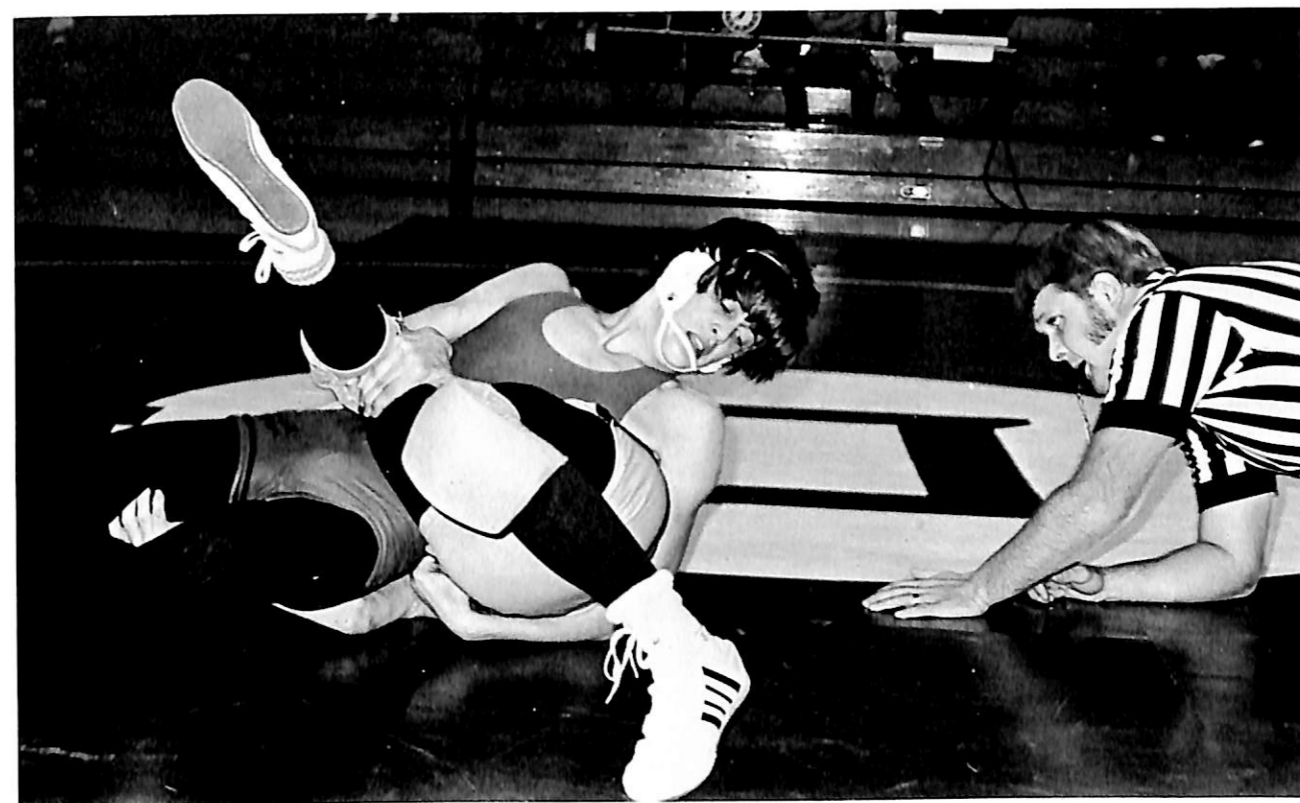
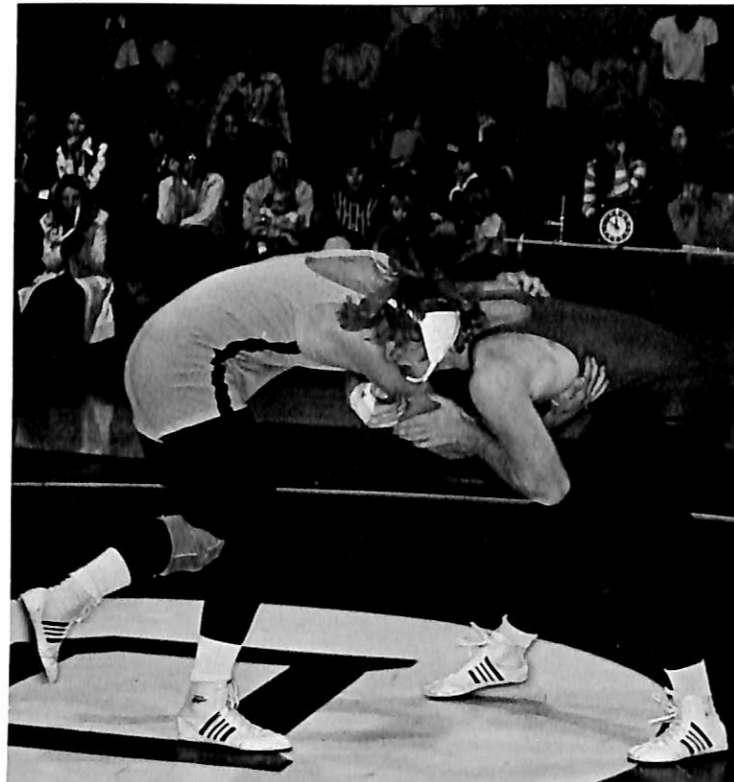
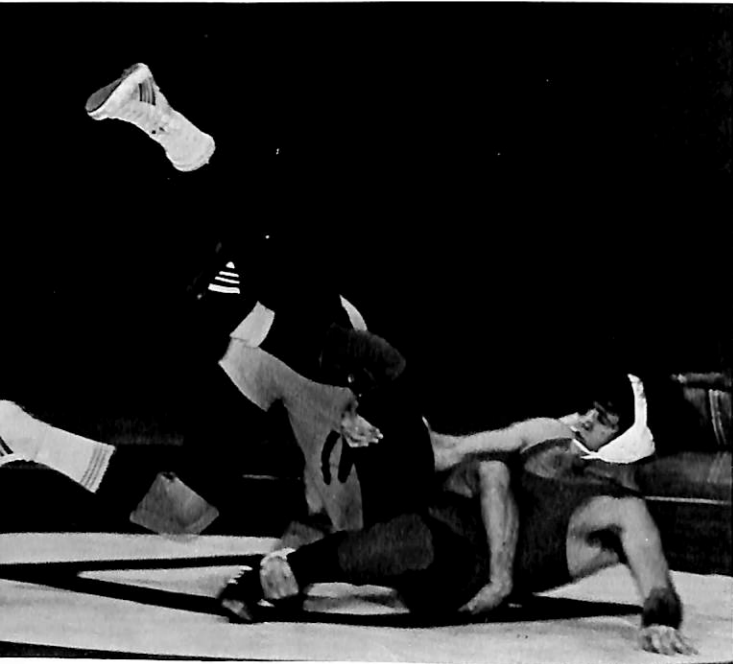


AT LEFT: Steve Probst leaps high into the air and tips in a basket for Dana. BELOW: Dennis McGuire beats the defense down the court for a layup.

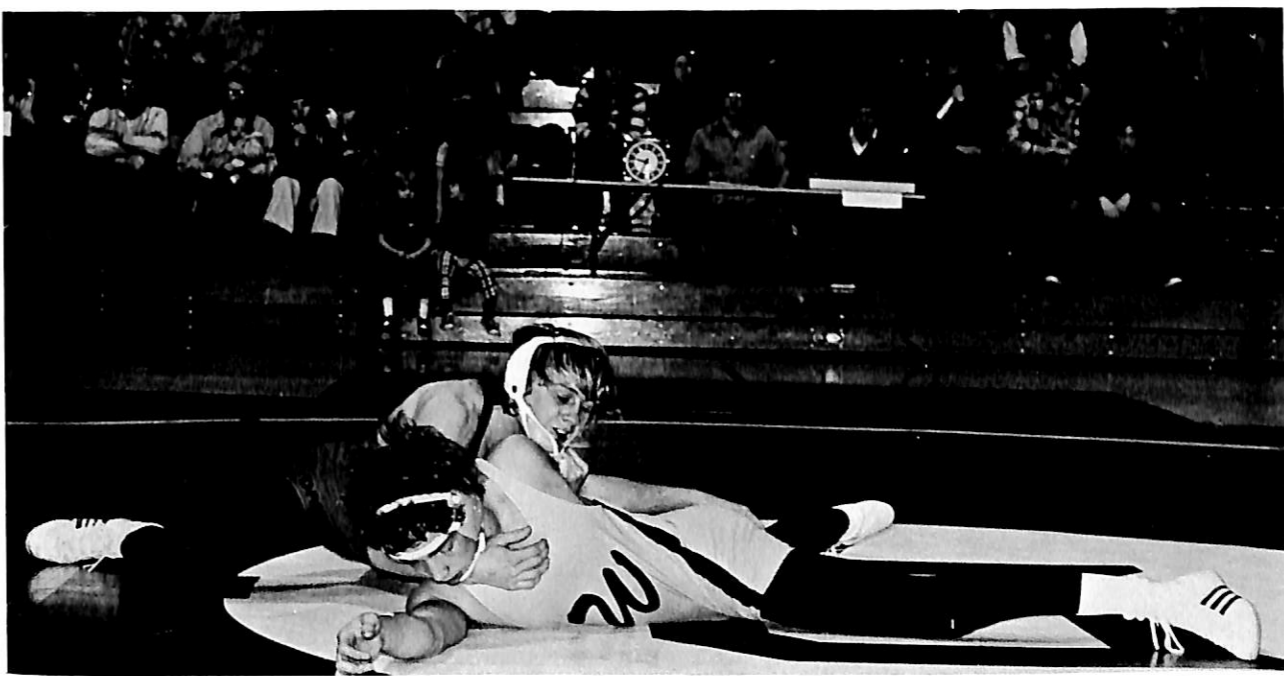


# inexperience, injuries dim grapplers hopes

AT LEFT: 177 pounder, Bill Bylund, hooks up with his opponent in the Wesleyan dual. BELOW: Joe Gerace, 134 pounder, pulls a switch in his match in the same meet.



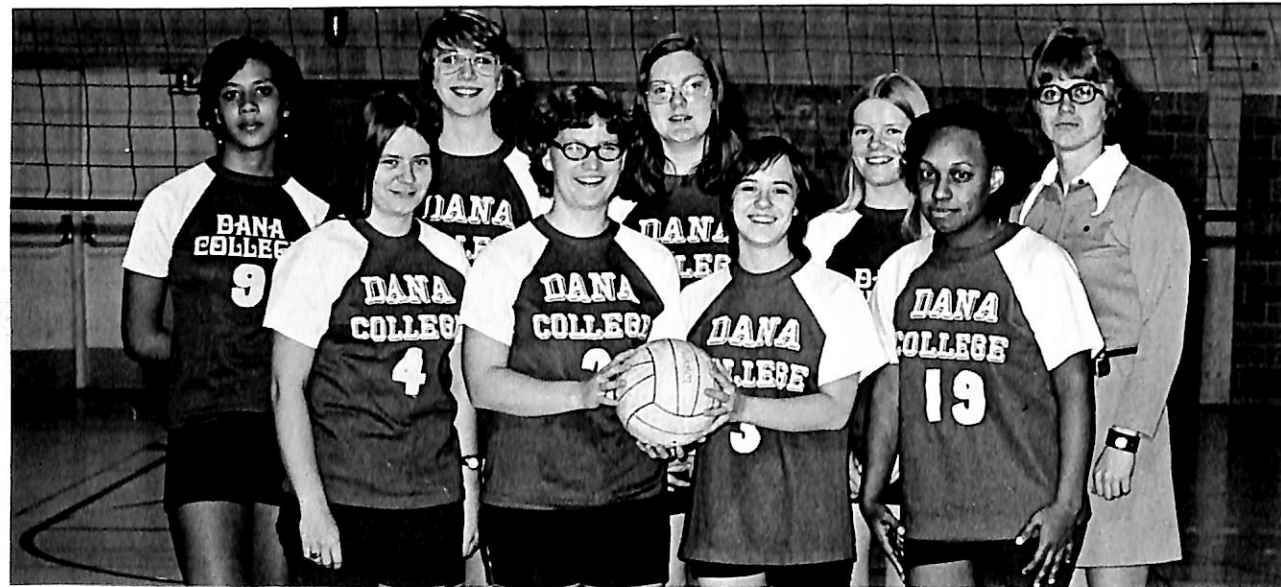
ABOVE: Junior 118 pounder, Dave Jones works for a pin. BELOW: Keith Peterson, freshman 126 pounder tries to flatten his opponent.



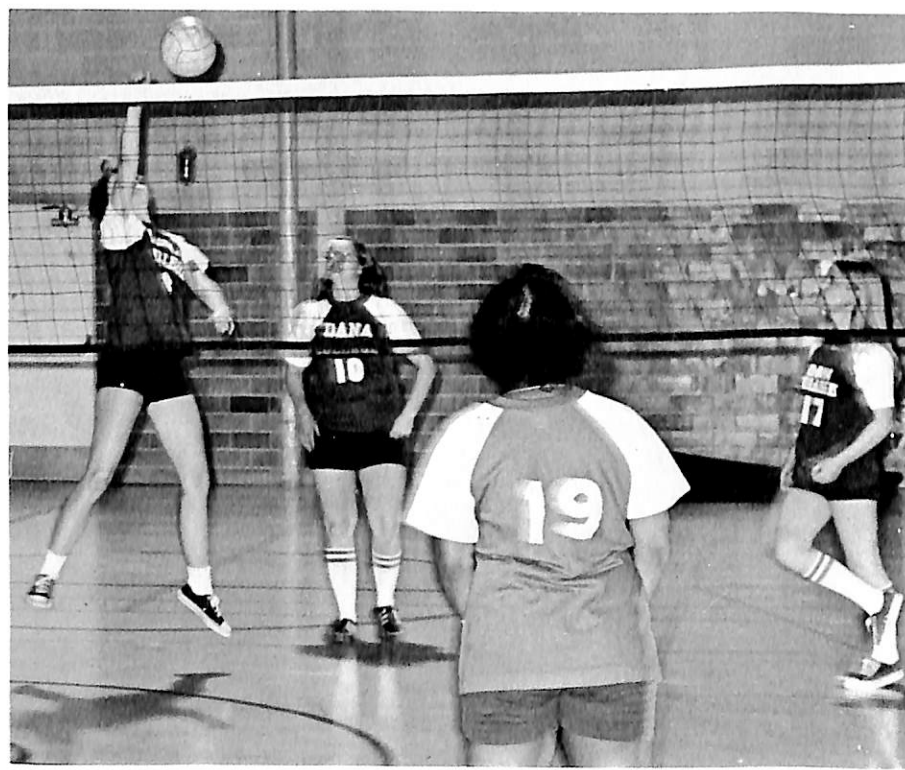
The 1974-75 varsity wrestling team consisted of: FIRST ROW, Joe Gerace, Dave Jones, Steve LeFeber, Keith Peterson, Mike Winslow; SECOND ROW, headcoach, Ernie Abariotes, Bill Bylund, Keith Heim, Chuck Foell, Gary Redel, Stan Johnson, and Tom Gurnett. All but three of these wrestlers are freshmen.

Ernie Abariotes (the Greek) came to Dana College with high hopes but few wrestlers. Abariotes had just come from a highly successful stint as head coach at Tri-Center high school in Iowa. He was not informed that he had been accepted as the coach at Dana until late in the spring of 1974, leaving him little opportunity to recruit blue chip wrestlers. Despite these adversities, there were numerous high points during the season. Steve LeFeber, a sophomore, won the conference championship at 126 pounds as Mike Winslow and Chuck Earlywine, both freshman, finished third at 142 and heavyweight, respectively. Injuries were costly, however, as Keith Peterson, Keith Heim and Bill Bylund were all lost to the team in this way.

# women's volleyball team is competitive



FRONT ROW: Kathy Sietsema, Cindy Peterson, Connie Jones, Arvis Wright. BACK ROW: Lori Brown, Sandra Peterson, Marie Schmitt, Marsha Boysen, Ms. Hausermann - Sponsor and Coach.



LEFT: Marsha Boysen prepares to hit a lob shot. ABOVE: Sandra Peterson spikes the ball during a practice session.



Steve Voitock, centerfielder, is shown stretching a hit into extra bases (ABOVE) and taking a cut at the ball (RIGHT).

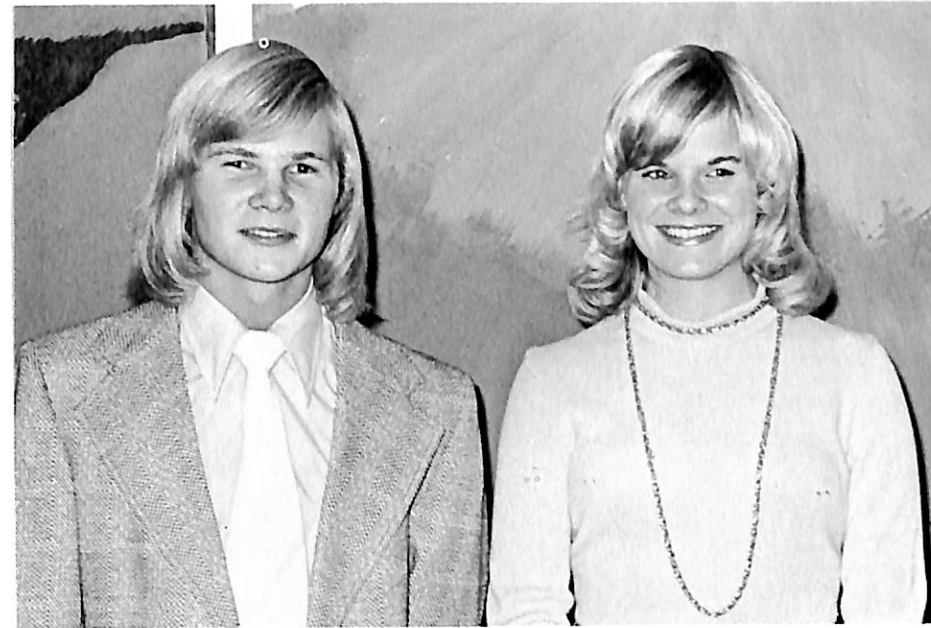
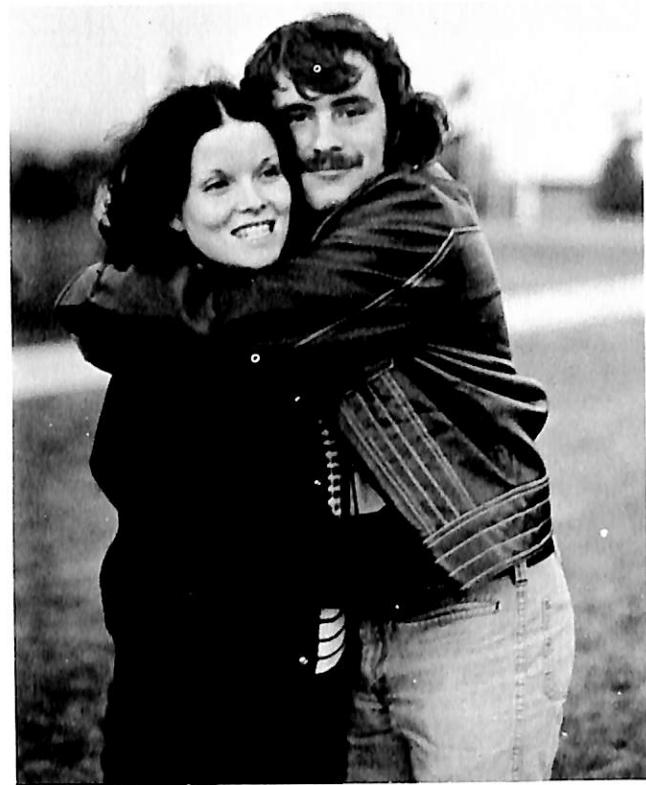
# baseball remains most successful sport at dana

Dana has attained a reputation as one of the finest small college baseball teams in the mid-west. The Vikings did nothing to hurt this standing in 1974 as they finished another successful season.

Senior, Steve Voitock, distinguished himself as an excellent centerfielder with both his glove and bat and was drafted by the Kansas City Royals at the close of the season.



FRONT ROW: Dan Holt, Dave Stickrod, Jeff Maliszewski, Paul Haack, Steve Voitock, Terry Jensen; SECOND ROW: Jerry Wilson, Terry Price, Ed Spicer, Bob Leach, Mike Giovanni, Rick Waite, Terry Peetz; THIRD ROW: Rod Jasa, Bryan Traylor, Walt Schacht, Barry Olsen, Mike Urdahl, Lance Poldberg, and Coach Dale Lemon.





organizations



## dana choir



ROW 1: R. Johnson, J. Radloff, D. Jenner, S. Walth, A. Walsh, R. Frevold, I. Frey, J. Nielsen, S. Kuhr, C. Dykman, J. Walth, J. Ellison, N. Begrends, Dr. Neve. ROW 2: L. Watt, M. Stout, S. Kennett, D. Erickson, R. Oelrichs, K. Hagen, R. Schwandt, N. Hansen, B. Haack, K. Fleming, M. Bentzinger, K. Paulsen, A. Jorgensen, D. Petersen, J. Boyce, J. Lippert, ROW 3: C. Schade, D. Demant, C. Gerlt, S. Neve, T. Christensen, D. Larsen, D.

Presten, M. Grorud, F. Jensen, J. Martin, D. Christensen, D. Johnsen, C. Parkhill, J. Meyer, S. Schjodt, J. Hogden. ROW 4: D. DuVal, L. McMagan, D. Lee, M. Sorensen, S. Martens, P. Hundtoft, L. Poldberg, C. Rasmussen, M. Williams, R. Schmidt, T. Walker, L. Neve, B. Bates, P. Johnson, R. Barratt, D. Knudsen.

A highlight in the history of the choir was celebrated this year at Homecoming honoring the Fiftieth Anniversary of the touring choir under the theme, "A Million Miles of Music." Many choir alumni made it a special point to return for the festivities and join the present choir in singing some old favorites under the direction of "Uncle Paul" Neve. Among other choir activities during the year were a colorful candlelight concert for Christmas featuring German and Danish carols, and a tour through Nebraska, Colorado and Kansas.

## dorm councils

Dorm council acts as the link between the administration and the dorm residents. The members, consisting of the house mothers and resident assistants, try to help make the residence halls as livable as possible and consider the rights of the individual in carrying out school policy.



STANDING: Kathy Sietsema, Karen Sietsema, Jayne Link, Rana Chapman, Mary Staby, Tricia Thennes, Karyn Hagen, Julie Miller, Diane Kniep. SEATED: Julle Ellison, Mrs. Esta Deets, Marsha Boysen.



SEATED ON FLOOR: Dan Gould, John Hibbing. SEATED IN BACK: Lance Poldberg, Mike Urdahl, Jack Martin, Greg Kalal, Mark Taft, Everett BAltz, Fred Erdman, Tim Johnsen, Mark Heistand, Mrs. Bertha Johnson.

## human rights and concerns



Left to right: Dave West, Sue Neve, Karen Jeppesen, Barb Beck, Steve Martens, Al Hanson, Mary Jo Henriksen, Pat Knuth.

Human Rights and Concerns, under the directorship of Al Hanson, attempted to awaken student awareness during the year. They sponsored well-known speakers such as Commander Lloyd Bucher of the U.S.S. Pueblo, Michael Novak and Karen Laub-Novak, and Dick Gregory, as well as many other events, seminars and workshops. In addition to weekly "Viewpoints" discussions at lunch, bi-weekly meetings were held Thursday nights in the Head.



BACK: Ruth Soneral, Karen Sietsema, Sue Zabel. FRONT: Jayne Link, Randy Carlson, Kathy Paulsen.

## social work club

Various activities which the club participated in this year were viewing tapes on "The Psychology of Self-Esteem" by Nataniel Branden and discussion with Dean Glass concerning Dana's social work program. Social work majors who had finished field work returned to share their experiences with the group.

## french club



Left to right: Lloyd Neve, Bob Jepsen, Brian Andersen, Gwendy Wilson, Kathy Fleming, Dr. Sarah Penik, Anne Nielsen, Jane

Nielsen, Marie Christian, Layne Johnson, Chris Parkhill  
SEATED ON FLOOR: Karen Jeppesen, Liz Petersen.

Activities of the French Club included participation in Foreign Language Night, Christmas caroling, and excursions to Omaha plays and dining. They also went to Kansas City to see the play,

"The Miser." Members of the French Club have the opportunity to utilize Dr. Penik's kitchen in preparing French meals for their fellow members.

## young republicans



STANDING: Dennis Lee, Fred Miller, Lance Carlson, Roxy Schwant, Robin Kumm, Kent Kronberg, Rich Nash. ON CHAIRS: Bambi Rettig, Carol Arnvig, Allison Willadsen, Dr. Sarah Penick, Loretta Callahan. ON FLOOR: Steve Larsen, Chris Parkhill, Arvis Wright, Duane Barnett.

Young Republicans is a political organization that helps the various campaigns of those seeking office and strives to get more people out to vote. This year they donated their time decorating the Washington County Republican Headquarters and the Washington County Republican Dinner.

## vikettes



The Vikettes perform dance routines to musical numbers played by the pep band. Their performances are either pre-game or during the half time of all home basketball games.

FRONT: Robin Kumm, Carol Arnvig. BACK: Sherry Borglum, Liz Petersen-captain, Bambi Rettig, Carolyn Campbell.



Red and white pom-poms swish to "Rock Around the Clock."





## society for the advancement of management

The main feature of S.A.M. was its spring seminar. This year's was held on March 11th and its topic was "Effectiveness of Advertising." S.A.M. features speakers throughout the year on such topics as taxes and the stock market. Tours were planned to such places as Guys Foods, Inc., and Falstaff Beer. S.A.M. is open to business administration, accounting and economics majors and all other interested students.



## tau gamma rho

SEATED: Celia Westphal, Leanne Hardymartin, Deb Wallman, Kris Thompson. STANDING: Melissa Vakshall, Cindy Knudtson, Deb Sundermann, Carol Miller, Laurie Barber, Judi Larsen, Sherry Borglum, Jann Richter, Ilene Koenig.

The sororities on campus are social organizations which help with various charity drives. This year, with the fraternity, they sponsored the 1975 WOW Muscular Dystrophy Marathon Dance. New members are brought in each year after a six-week pledging period.



## kappa theta phi

ROW 1: Hannelore Sander, Della Kelso, Judy Howsden. ROW 2: Jan Nurse, Darlene Lyle, Sue Fernald. ROW 3: Sue Smith, Pat Hansen. ROW 4: Dawn Qualley, Denise Nance.

FRONT: Carol Miller, President; Jerry Clanton, Vice President; Dwain Wulf, Secretary; John Peterson. BACK: Mike McCallum, Gary Soetmelk, Dr. Holquist, Sandy Pierce, Jeff Lower, Mark Heist and, Fred Miller, George Hertz, Treasurer. NOT PICTURED: Joe Gerace.

## student senate

The 1974-75 Student Senate met regularly on Wednesday nights in the Dragon's Tail. Items on the agenda included: the new recommendations for intervisitation policy, approval and allocation of funds for senate organizations such as SAB and HRC, and many other proposals from senators for the benefit of the general campus body. Five Senators are elected at large from each of the respective classes. The 1974-75 senate officers were: President, Kent Day; Vice President, Layne Johnson; Secretary, Rana Chapman; and Treasurer, George Hertz.



ROW 1: S. Berke, R. Chapman, Dean Palm, D. Kniep, A. Willadsen, D. Barnett, E. Fenske, K. Kronberg. ROW 2: J. Nielsen, G. Hertz, L. Johnson, K. Jensen, L. Petersen, M. Staby, B. Beck, K. Day. ROW 3: W. Schacht, J. Clanton, M. Schacht, P. Christensen, A. Rasmussen, J. Miller. ROW 4: K. Christiansen, D. Knudsen, P. Hundtoft.

## cheerleaders

The 1974-75 cheerleaders along with the pep band, the Vikettes, and the student body tried to promote the viking spirit throughout football, basketball, and wrestling, wherever and whenever weather and transportation permitted. With the help of Dean Palm, student senate, and the student body, plans were underway at the close of the basketball season for a more organized club for the following year.



BACK—Wrestling cheerleaders: Carolyn Campbell, Deb Vannier, Julia Hartje, Sue Kranz. FRONT—Basketball cheerleaders: Leanne Hardymartin, Hannelore Sander, Nora Lorraine, Sue Johnson, Carrolyn Robinson.



## student activities board

Student Activities Board is an organization of students that provide campus entertainment and work for campus involvement. The 1974-75 board: Director, Tim Waggoner; Secretary, Judi Larsen; Treasurer, Carol Rettedal; board members; Gary Madsen, Kent Day, Jim Larsen, Jim Kovalskas.

INNERTUBE: Ron Winter. MIDDLE: Ed Wittrock, Carol Rettedal, Judi Larsen, Kathy Fleming. BACK: Lance Carlson, Randy Carlson, Kent Day, Tim Waggoner, Gary Madsen, Alan Rasmussen.



Carly Robinson cheers during a tense moment.

# danish club



Left to right: Steve Callahan, Fred Jensen, Paul Hundtoft, Pat Knuth, Giles Bronson, Mary Staby, Ben Collin, Leif Neve,

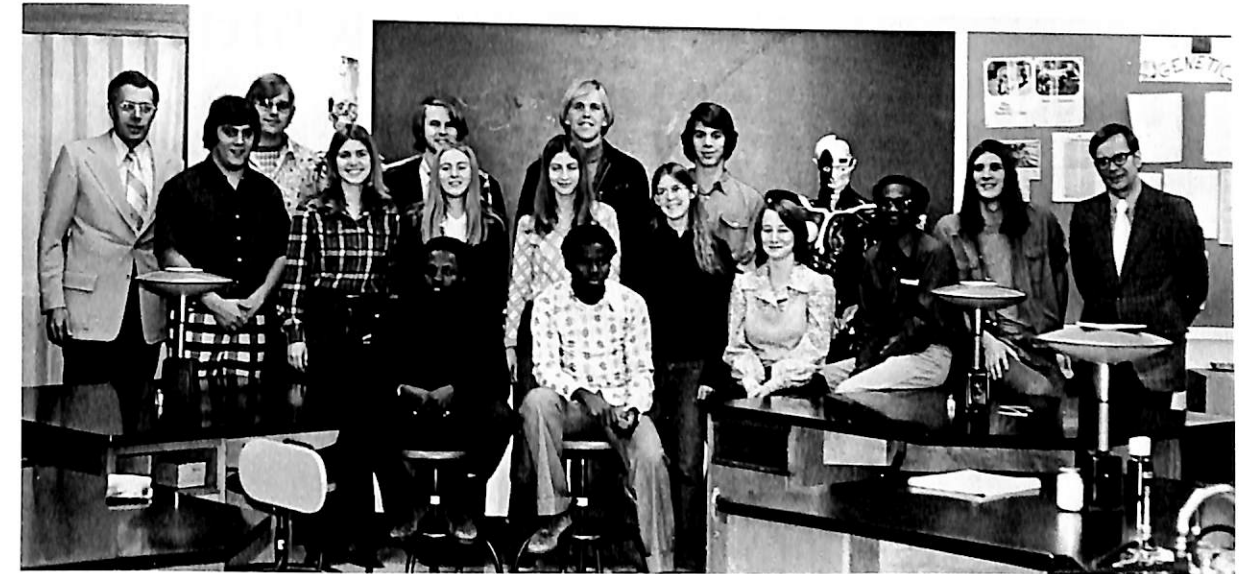
Mary Thomsen, Mrs. Bodil Johnson, Nancy Hansen, Lori Nielsen, Sherry Borglum.



The Danish Club is composed of students who speak Danish and who are active in the presentation of Danish events on campus. Among the events this year were the annual aebleskiver buffet at Homecoming, evenings of Danish films, and a Scandinavian Week.

"More aebleskiver?" became a common phrase during Homecoming.

# ars medica



BACK: Mr. Eugene Lindbland, Brian Cox, Greg Kalal, Tim Garret, Gary Erbes. FRONT: Roy Wuchter, Barb Beck, Bonnie Sand, Vicki Werner, Rachel Benbow, Jane DeVasure, Gideon Daniel, Lief Neve, Dr. Larrie Stone. ON STOOLS: Justus Ike, Ekanem Ekanem. Ars Medica is a club for everyone interested in the medical sciences. Activities such as films, field trips, and lectures are held monthly.

# sower

Dana's literary magazine, the Sower, is written and produced by the Dana student body. Poems, prose, translations, and art work are submitted early in the spring for selection by the Sower staff. Joseph Langland, a present day poet, started the Sower in 1942 while on Dana's faculty. The 1974-75 co-editors were Deb Schou and Mary Staby.



BACK: Mike Williams, Mary Staby, Giles Bronson. FRONT: Deb Schou, Tricia Groat, Vicki Werner. NOT PICTURED: Kathy Jensen, Anne Nielsen.

## student education association



SEATED: K. Sietsema, R. Chapman, N. Behrends, S. Zabel, B. Bates, D. Stubbendeck, B. Larson, J. Miller. MIDDLE: S. Kennett, M. Stout, K. Berntson, J. Ellison, S. Brand, L. Watt. BACK: S. Spilde, M. Schroeder, L. Petersen, K. Hagen, T. Christensen, Dr. Melvin Boehr, B. Blundell, M. Stewart, D. Lyle, B. Loeschke, A. Walsh, S. Reese.

The Student Education Association seeks to develop a professional attitude among education students. In keeping with this goal, several meetings feature public school teachers speaking on their expectations of the college student working in the classroom. A regional workshop and state convention, offered by the state Student Education Association of Nebraska, were attended by Dana S.E.A. members.

## american scandinavian foundation

The Dana chapter of the National American Scandinavian Foundation sponsored two speakers, Dr. Christian Hvidt and Dr. Richard Petrow. Dr. Hvidt spoke on the Danish immigration and Dr. Petrow's lecture was a discussion on the Danish Jews during World War II. Events planned for the spring of 1975 included a traveling Scandinavian art show and another lecturer, Howard Hong, from St. Olaf College, who spoke on Soren Kierkegaard.



Dr. Richard Petrow discusses his book THE BITTER YEARS. Left to right are Mary Staby, Mr. Norman Bansen, Dr. Petrow, and Bruce Bates.

## tri-d's

The primary objective of Dana's Dejlige Datter is to provide service projects for the college and community by extending the Christian fellowship which is the core of this women's organization. Tri-D's most successful on-going project is the sponsorship of Dana's Big Sis—Little Sis program. This is where all freshman women are "adopted" by "older sisters" who aid the freshman through the home-to-college transition.



BACK: Nancy Behrends, Ruth Soneral, Kathy Paulsen, Sue Zabel, Kathy Sietsema. FRONT: Monique Bentzinger, Mercy Ahrens, Tana Christensen, Roxy Kruse, Karen Sietsema.



## kdcv-fm

Left to right: George Hertz, Jeff Hogden, Jerry Clanton, Dennis Weller, Greg Kalal, Tim Waggoner, Marsha Boysen, Deb Winkelman, Bill Kruder, Sondra Sshjodt, Julie Ellison, Jan Miller, Tom Vertes, Jane Radloff. NOT PICTURED: Joe "The Jerse" Gerace.



FIRST ROW: Roxy Kruse, Lance Poldberg, Dave Manz, Mike McCallum. SECOND ROW: Tari Therkelsen, Liz Petersen, Dave West, Wanda Peltonen, Mike Williams, Diane Stewart, Steve Martens. THIRD ROW: Jane DeVasure, Deb Schou, Giles Bronson, Mary Jo Henriksen, Renae Johnson, Karen Jeppesen, Connie Gibson, Marsha Boysen.

## volunteers for humanities

The Volunteers for Humanities contribute their time, energy, minds, and talents to assist the Humanities staff. In an informal atmosphere the volunteers gather in Parnassus to answer the telephone, check out folders, correct tests, set up exhibits, lead seminars, and participate in events.

## fellowship of christian athletes



STANDING: Brad Larsen, Steve Christiansen, Barry Olsen, Mike Urdahl, Steve Probst, Jim Vohs, Doug Fecht, Gary Boeck. KNEELING: Mark Sorensen, Bob Jones, Myrnn Barry, Bruce Goolsby, Bob Mountain, Mel Lundgren. SITTING: Bill Blundell, Mike Winslow, Bob O'Brien, John Hibbing.

Fellowship of Christian Athletes, a national organization designed to confront athletes with the challenge and adventure of following Jesus Christ. Meetings at Dana are held every other week with any level athlete welcome, including intramurals and spectators. Athletics is only a common interest, fellowship is the key. Discussion of the problems and happiness involved in our lives is the main thrust of the meetings. It is quite informal but also quite valuable in strengthening faiths, often by realizing that someone else has the same problems you do.



## d-club

D-Club members include everyone who has received a letter for varsity participation in a sport. They raise money by selling concessions during basketball games.

FRONT ROW: Mike Urdahl, Tim Johnsen, Al Schutt. SECOND ROW: Steve Christiansen, Gene Dollen, Gerry Wilke, Barry Olson, Mark Taft, Bill Bylund. THIRD ROW: Fred Erdman, John Escher, Curtis Boeck, Steve LaFeber, Terry Jensen, Dan Holt. FOURTH ROW: Gary Boeck, Jerry Wallace, Dave Hastings, Paul Haack, Coach Dale Lemon, Dave Larson. FIFTH ROW: Jeff Maliszewski, Dennis Downard, Todd Roecker, Steve Probst. SIXTH ROW: Mark Tiby, Dan Dye, Gary Redel, Robin Reynolds, Bob Jones. LAST ROW: Rod Andersen, Tony Thielen, Mark Sorensen.



Looking out from the concession stand are Fred Erdman, Mike Urdahl, Tim Talmadge, and Mark Tiby.

## encounter with philosophy

Encounter with Philosophy is an organization established for the independent discussion of philosophical questions by interested students. Many members are not enrolled in philosophy courses. Such things as the nature of God, reality, deism, materialism, socio-economics, and the roles of the sexes have been discussed. Meetings are held at Dr. Clifford Hanson's home.



IN CHAIRS: Barb Beck, Mark Gruner, Nancy Hansen, Karen Jeppesen, Kathy Eccleston. ON FLOOR: Stu Hansen, Mike Behuniak. NOT PICTURED: Joe Gerace.



## kappa chi lambda

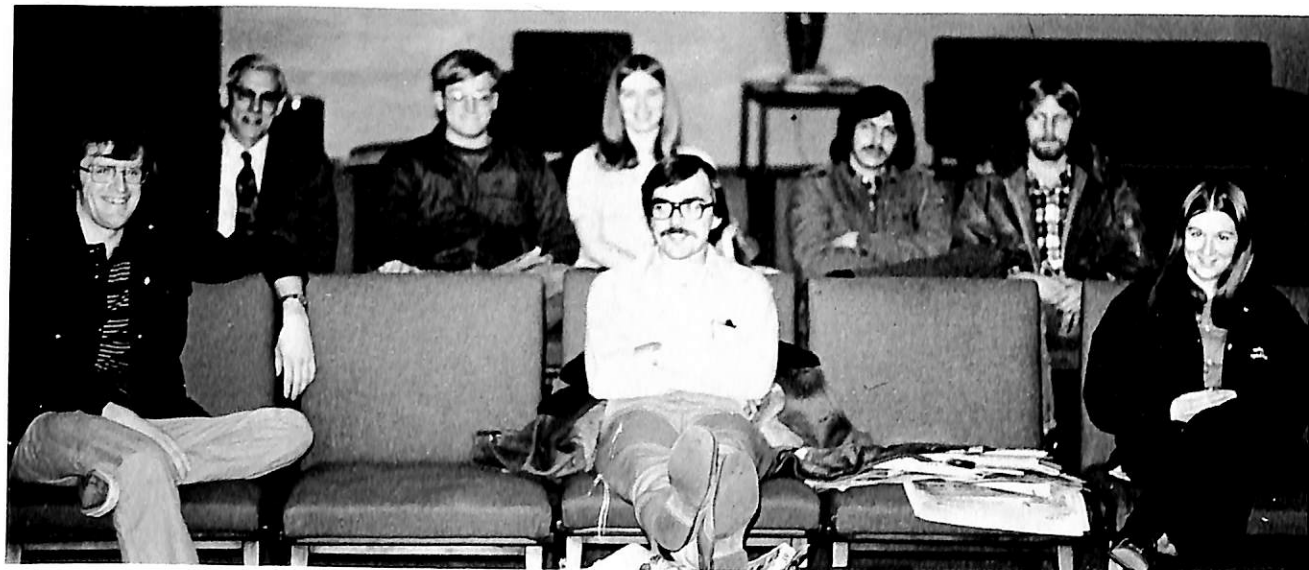
STANDING: Tom Cooke, Caryl Grabil, Mack Hadley, Bill Davies, Bill Kruder, Stan Johnson, Bob Mountain, Jeff Luce, Malcolm Noyes, Dan Gould, Mike Urdahl, Gerry Wilke, Roddy Jasa, Bob Jones, Barry Schweer, Rick Waite, Dave Hastings, Roy Wuchter. KNEELING: Mike Christensen, Mike Giovanni. Kappa Chi Lambda is a men's social organization which has helped with various charity drives. This year, with the sororities, they sponsored the 1975 WOW Muscular Dystrophy Marathon Dance.



## swim team

Dana's swim team competed in different meets, including a triple home meet against Midland and Concordia.

STANDING: Craig Zimmerman, Jack Martin, Nora Lorraine, Stu Hansen, Mel Lundgren. SEATED: Jeanmarie Nielsen, Cindy Knudtson, Paula Waggener, Fay Coles, Coach Rich Houston.



## chess club

Concentration is the key for Dana's Chess Club members. PICTURED IN BACK: Dr. Elmer Rasmussen, Mike McCallum, Mercy Ahrens, Gary Rasmussen, Randy Gibbs. FRONT: Gary Soetmelk, Mark Gruner, Kathy Paulsen.



## dana symphonic and pep bands

The Dana College band, directed by Dr. -Wayne W. Wise, each year performs numerous concerts on tour, in Blair, and at home. During the 1974-75 school year, this ensemble presented its Christmas concert in Borup Coliseum on December 8, in addition to its usual goodwill concerts at rest homes in Blair.



Band roster: E. Baltz, K. Harris, D. Hoch, J. Hogden, S. Martens, D. Weller, J. Meyer, P. Hilgenkamp, P. Hundtoft, D. Demant, C. Jones, F. Jensen, B. Loeschke, C. Westphal, I. Frey, L. Neve, S. Sandager, G. Erbes, J. Martin, R. Oelriches, K. Paulsen, J. Rethwisch, D. Olson, D. Vannier, P. Knuth, J. Sorick, B. Bates, C. Peterson, J. Tjomsland, J. Kovalskas, S. Berntson, J. Ness, M. Musick, J. Meyer, J. Nielsen, K. Berntson, S. Peterson, M. Johnson, S. Nelson, C. Hemken, S. Hansen, R. Kumm, C. Pieper, D. Preston.

## Dana players

The Dana Players were an extremely active crew during 1974-75. They presented "No, No Nanette" first semester, and during interim, the chancel drama, "Salvation." In the spring they presented the one-act play, "The Farce of the Worthy Master Pierre Patelin," and Ibsen's play, "A Dolls House." As well as participating in all these productions, they presented "The Annual Dana Players Show," which ended the school year for the club.



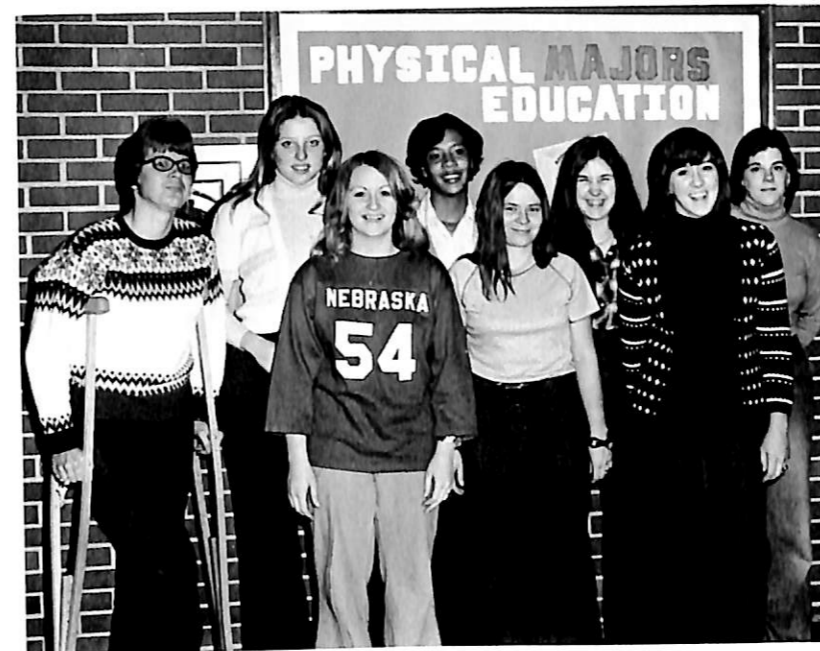
ROW 1: J. Nielsen, P. Christensen, S. Pond, D. Jenner, D. Reque, L. Watt, K. Madsen, B. Bresemann, C. Sand. ROW 2: B. Wichman, K. Harboe, R. Johnson, S. Walth, D. Winkelman, J. Lippert, S. Berke, K. Lizer, J. Wood, K. Westfahl. ROW 3: D. Larsen, T. Waggoner, J. Knudsen, J. Meyer, N. Hansen, J. Boyce, D. Lee, L. McMahan, J. Videbeck, K. Andersen, P. Hundtoft.

## alpha psi omega

Alpha Psi Omega is a dramatic fraternity which recognizes meritorious participation in college dramatics. The members of this fraternity are active in both the acting and technical aspects of the theater.



Left to right: Jean Wood, Paul Hundtoft, Jennifer Meyer, Kathy Andersen, Linda Watt, Cindia Sand, Kathy Lizer.



FRONT: Patti Smith, Kathy Sietsema, Carly Robinson. BACK: Ms. Carol Hausserman, Roxie Schwandt, Lori Brown, Kathy Fleming, Naomi Westby.

## hper

HPER is a professional organization established to increase knowledge of opportunities for women majoring in health, physical education and recreation. HPER gives a broader view of these fields and helps set up programs to involve students and the community in both leisure and professionally oriented activities.



Left to Right: Dennis Weller, Jim Kovalskas, Marilyn Musick, Jeff Meyer, Sherry Kuhr, Jennifer Meyer, Dennis Hoch.

## music educators' national conference

This group is made up of students who are majoring in music education, with Dr. Wise as the faculty advisor. Persons representing various aspects of music education, such as Dana graduates who have been teaching music in elementary or secondary schools, are invited to share their experiences in education.





FRONT ROW: Rene Johnson, Carol Rettedal, Kathy Paulsen, Bev Larsen, Jeff Hogden. SECOND ROW: Nancy Behrends, Kathy Olson, Craig Schade, Mary Staby, Lance Poldberg, Paul Johnson, Tricia Groat. THIRD ROW: Anne Walsh, Dave Olson, Debbie Petersen, Dennis Lee, Bruce Bates, Tana Christensen, Sue Neve. FOURTH ROW: Steve Bernston, Anne Jorgensen, Diane Larsen, James Larsen, Dave West. FIFTH ROW: Diane Schmeekle, Suzanne Gilbert, Connie Gibson, Lisa Damrow, Roger Barratt, Shauna Spilde, Mark Sorensen.



## dana folk dancers

Folk Dancers had a good year as more people than ever joined the group and enjoyed getting involved in a little culture. The group was featured at the community folk festival in Kronberg, Nebraska, and appeared on campus on a number of occasions including Homecoming and Christmas Sunday.



# danian

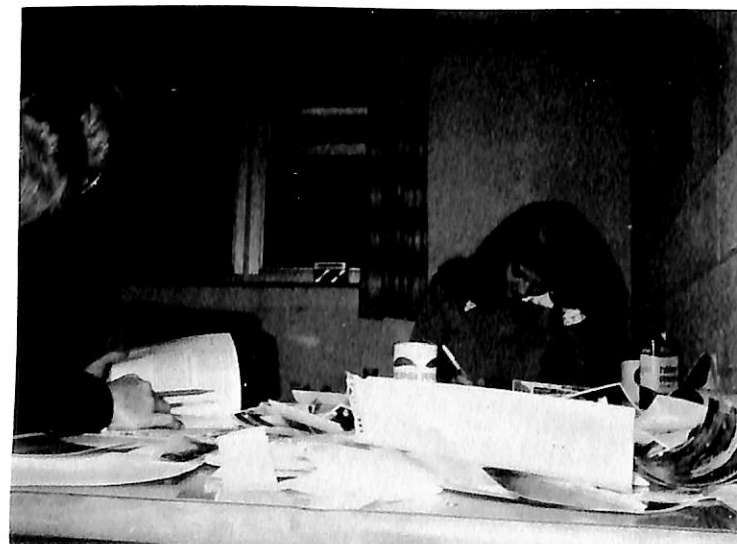
The Dana yearbook, the Danian, is produced by a small group of students as a totally outside effort. Many hours of work and training are involved in compiling the book.



Joe "Jerse" Gerace busily types out some copy.



BOTTOM ROW: Rich Nash, John Beck, Les Tripp, Jerry Wallace. SECOND ROW: Pat Knuth, Sherry Borglum, Kathy Olson. THIRD ROW: Kathy Jensen, Donna Reque. TOP: Editor Mary Staby.



Another exciting evening in the Danian "Second Home to Us" room.

# hermes



FRONT ROW: Howard Kulzer, Mike Williams, Tim Garrett, Arvis Wright, Editor Deb Schou. SECOND ROW: Pat Knuth, Tom Walker, Mary Staby, Lori Nielsen, Barb Beck,

Shirley Steffens. THIRD ROW: Dennis Weller, Dennis Nelson, Giles Bronson, Steve Berntson.

Under the student leadership of editor-in-chief Deb Schou and managing editor Steve Berntson, the Hermes kept the student body informed of campus happenings. The newspaper

was published bi-monthly with special editions at various times including Homecoming and Interim.

# church council



SEATED: Deeny Stubbendeck, Mark Gruner, Jeff Hogden, Renae Johnson, Chris Parkhill, Mary Jo Henriksen, Deb Jenner, Everett Baltz. STANDING: Al Hanson, Dave Menz, Lance Poldberg, Steve Martens, Pastor Pietz.

A bona fide congregation of the American Lutheran Church, the campus congregation seeks to provide opportunities for worship and work for students on campus.

The altar guild makes a needed and valuable contribution to the worship services on campus. It helps maintain the chancel and its furnishings, vests the altar according to the requirements of the seasons of the church year, and takes care of the sacred vessels, linens, and vestments. The altar guild attempts to provide the best possible setting for on-campus worship.

The acronym F. I. S. H. stands for Fellowship in Serving Him, and is a planning and coordinating committee for religious activities on campus. This group is instrumental in strengthening the spiritual growth of all Dana students.

# altar guild

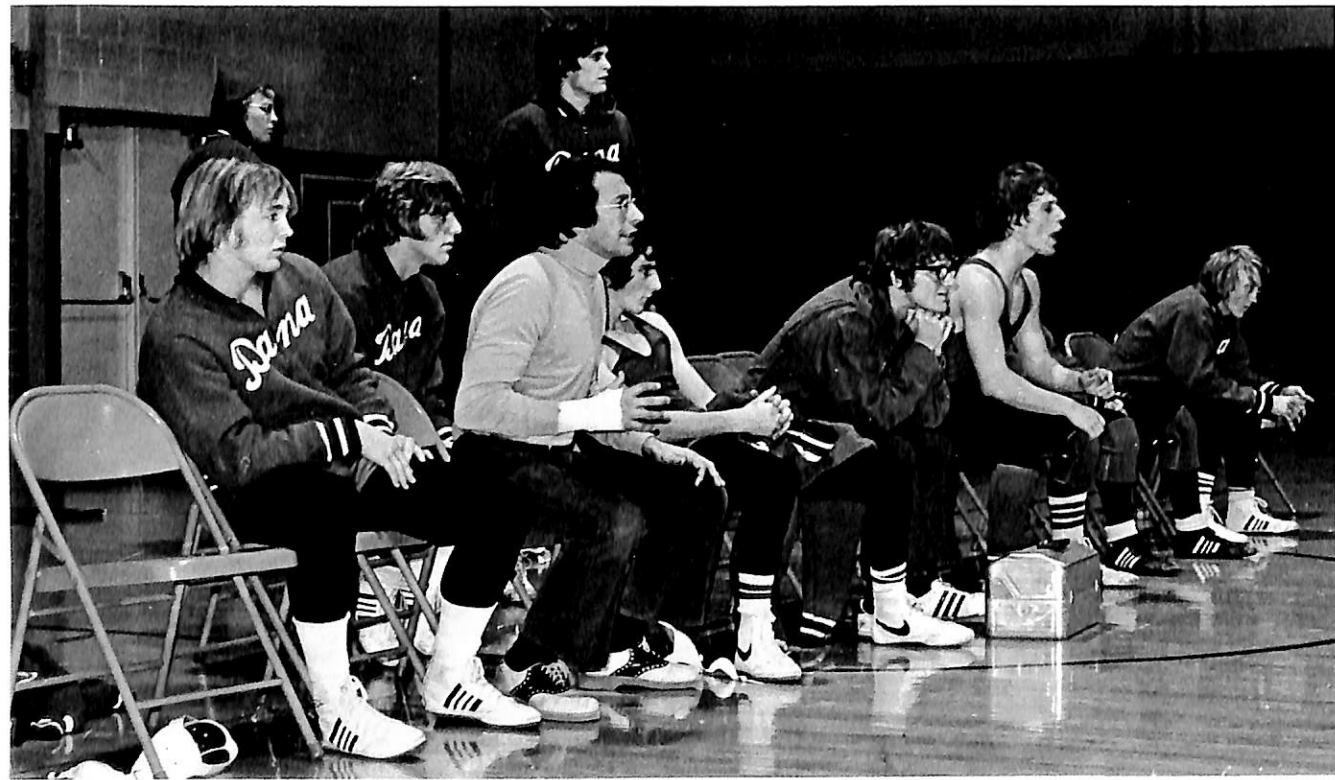


ROW ONE: Renae Johnson, Fred Jensen, Karen Hagen. ROW TWO: Rhonda Oelrichs, Chris Parkhill, Dave Menz, Sue Neve. THIRD ROW: Pastor Pietz, Steve Martens, Karl Guhn.

f. i. s. h.

Left to right: Pastor Pietz, Renae Johnson, Jeff Hogden, Mercy Ahrens, Lori Nielsen, Lance Poldberg.







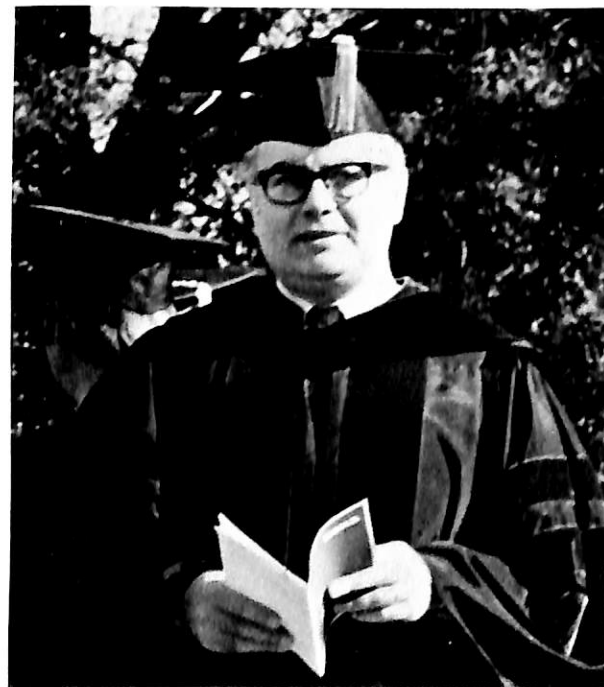
faculty  
and staff



Dr. Earl R. Mezoff  
President of Dana College



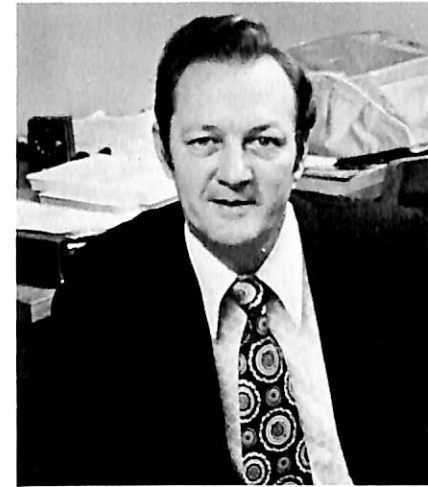
Dr. C. Clifford Madsen  
Consultant to the President



Dr. Robert J. Glass  
Dean of the College



Mr. Richard L. Palm  
Dean of Students



Mr. Keith W. Hansen  
Business Manager



Mr. Richard V. Showers  
Director of Admissions



Mr. Kenneth C. Lizer  
Director of Financial Aid  
Assistant Director of Admissions



Mr. Michael E. Jones  
Admissions Counselor



Mr. Larry S. Knudsen  
Admissions Counselor



Mr. Greg E. Witte  
Admissions Counselor



Dr. Elmer M. Rasmussen  
Registrar and Director of Counseling



Mr. Phillip Pagel  
Director of Public Relations and News Service



Ms. Patricia Thennes  
Head Resident of Blair Hall



Mrs. Esta Deets  
Dean of Women  
Head Resident of Mickelsen Hall



Ms. Rana Chapman  
Head Resident of Argo Hall



Mr. Eugene L. Meyer  
Executive Director of Development



Mr. Paul Strand  
Assistant Director of Development



Mr. Jack Martin  
Head Resident of Holling Hall

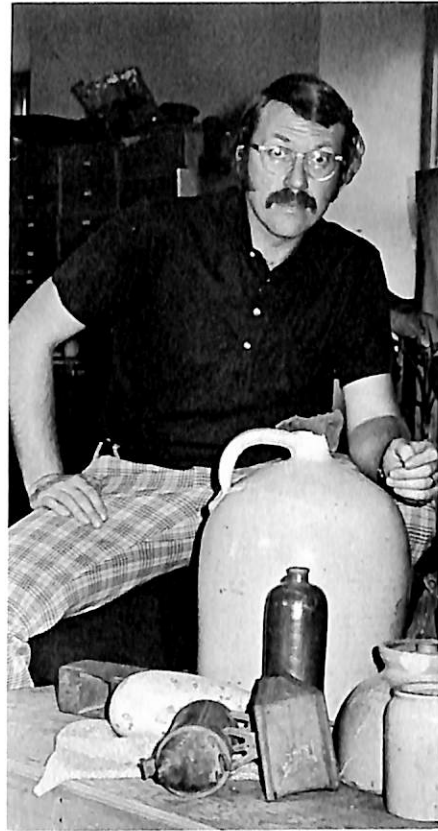


Mrs. Bertha Johnson  
Head Resident of Rasmussen Hall

art



Mrs. Judy Pittack  
Instructor in Art



Mr. James Olsen  
Assist. Professor of Art

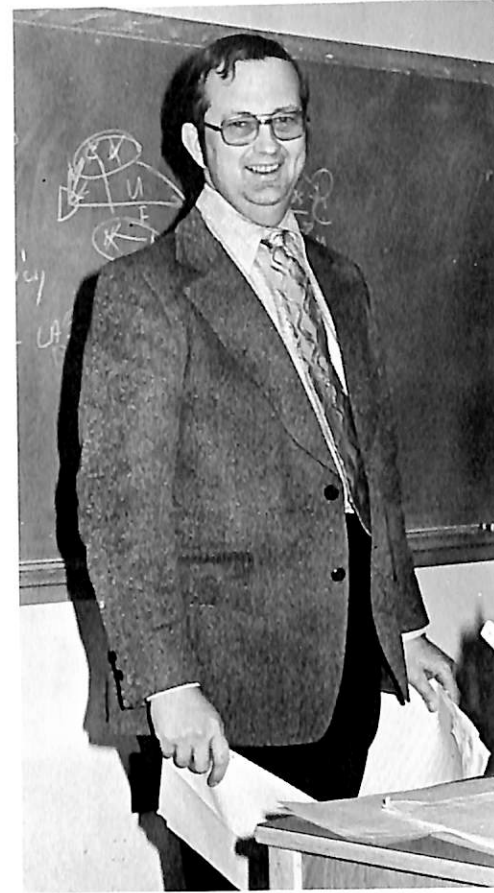


Mrs. Marie Christian  
Instructor in Art



Mr. F. W. Thomsen  
Professor of Art

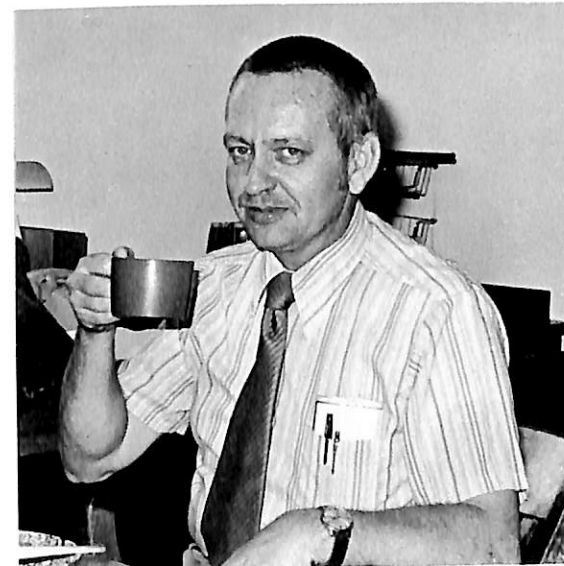
business  
administration



Dr. Richard Holquist  
Assist. Professor of Business Administration



Dr. R. Gary Dean  
Assoc. Professor of Business Administration



Mr. Gilbert Ragan  
Assoc. Professor of Economics



# education



Dr. Melvin Boehr  
Assoc. Professor of Education



Mr. Fred W. Bieck  
Instructor in Special Education

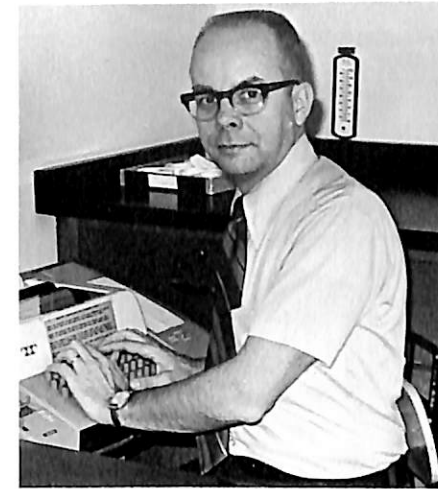


Mrs. Dorothy Kundel Olson  
Assist. Professor of Elementary Education



Dr. Raymond Weckmuller  
Professor of Education

# english



Dr. Paul Emmerich  
Assoc. Professor of English



Mrs. Anna George  
Instructor of English



Mr. Norman Bansen  
Professor of English and Danish



Dr. Herta Engleman  
Professor of English



Ms. Luella Nielsen  
Assoc. Professor of English

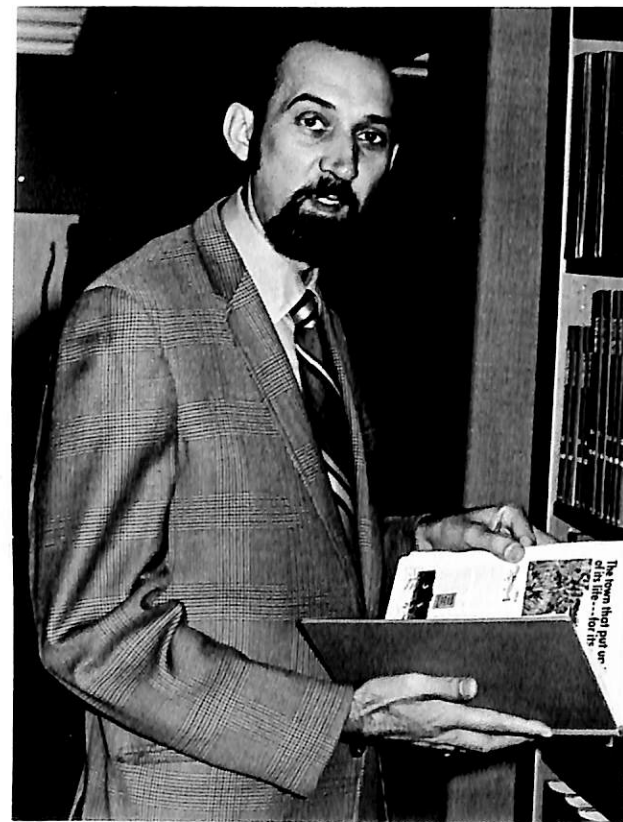
# languages library science



Dr. Sarah Penick  
Assoc. Professor of French



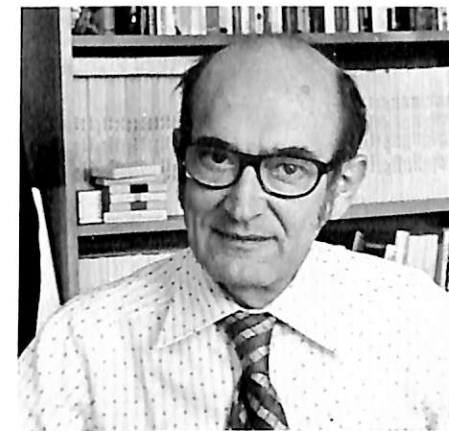
Mrs. Bodil Johnson  
Instructor in Danish and German



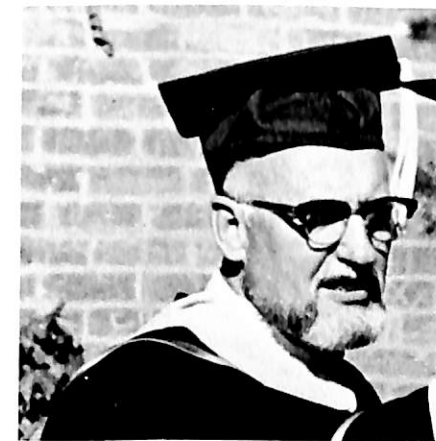
Mr. Ronald Johnson  
Head Librarian & Assist. Professor of Library Science



Mrs. Ruth Rasmussen  
Assist. Librarian & Instructor in Library Science



Mr. George Grube  
Assoc. Professor of Biology



Mr. Frank Hengeveld  
Assoc. Professor of Chemistry



Mr. Arvin Hernes  
Assoc. Professor of Physics

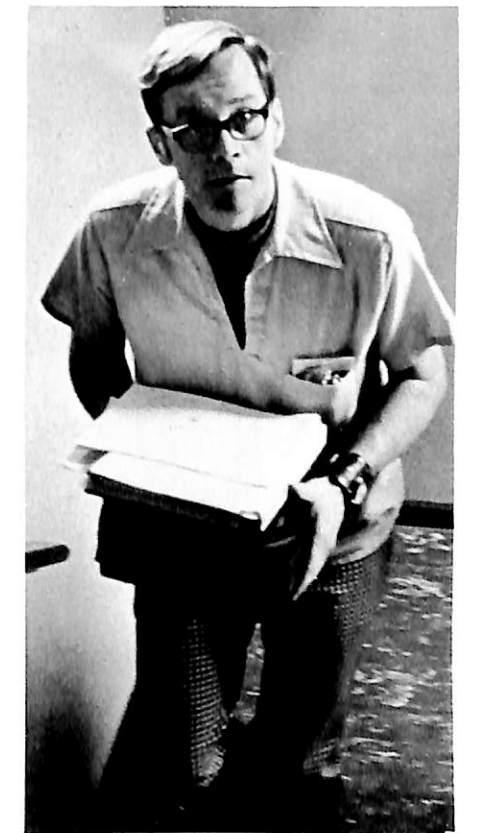
# math science



Mr. Eugene Lindblad  
Assoc. Professor of Chemistry



Mr. Roger Olson  
Assoc. Professor of Mathematics



Dr. Larrie Stone  
Professor of Biology

## music



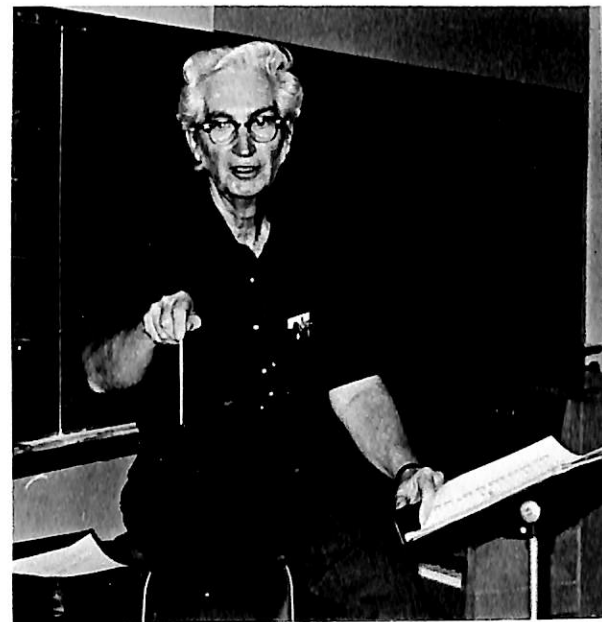
Dr. Alan Brandes  
Assoc. Professor of Music



Dr. Paul Neve  
Professor of Music

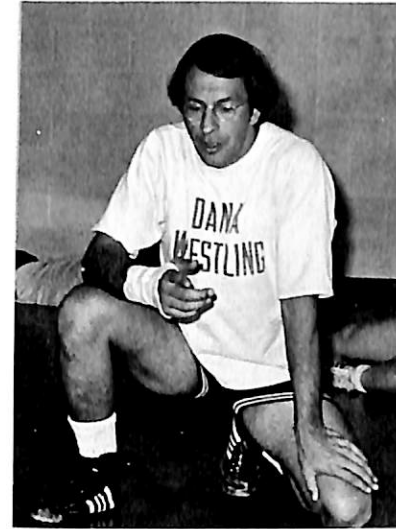


Mrs. Mildred Slocum  
Instructor in Voice

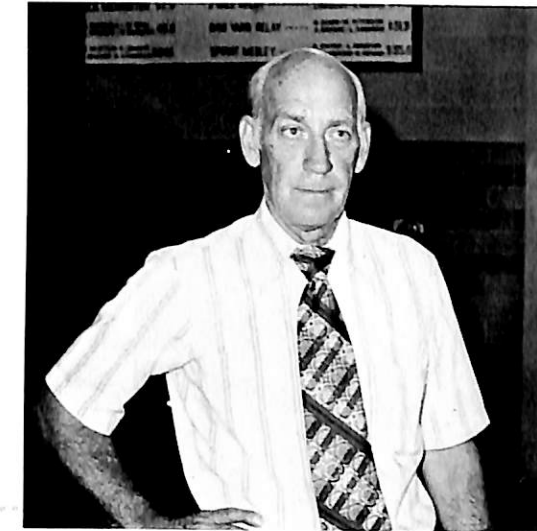


Dr. Wayne Wise  
Professor of Music

## physical education



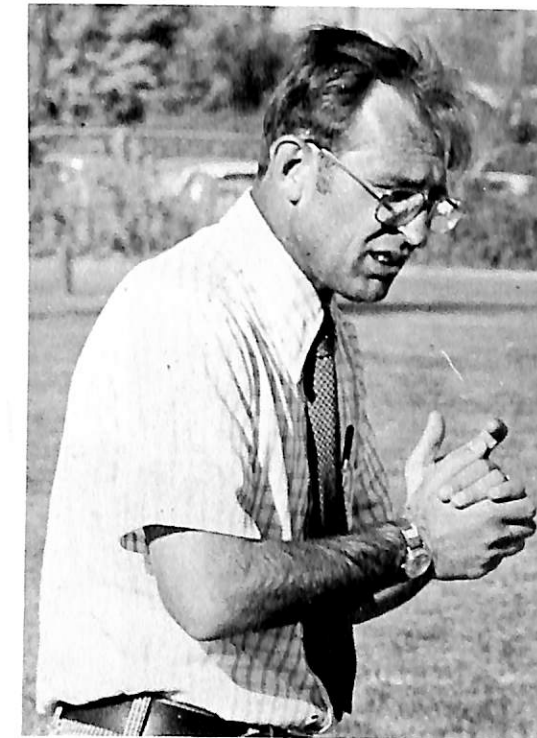
Mr. Ernest Abariotes  
Head Wrestling Coach



Mr. Paul Peterson  
Assoc. Professor of Physical Education



Ms. Carol Haussermann  
Instructor in Physical Education

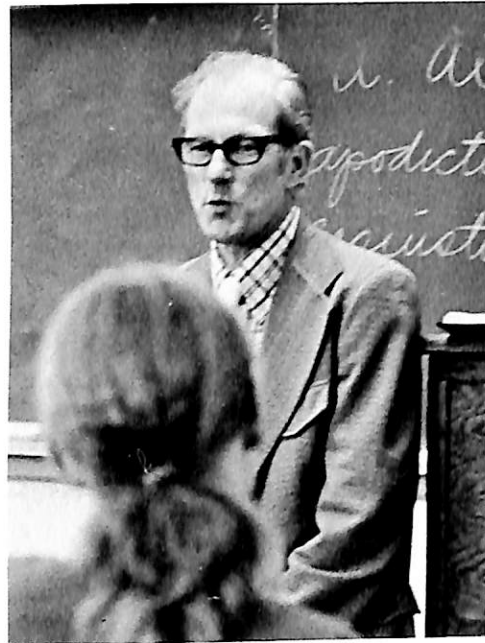


Mr. Gary SeEVERS  
Assist. Professor of Physical Education



Mr. Dale Lemon  
Assist. Professor of Physical Education

# religion



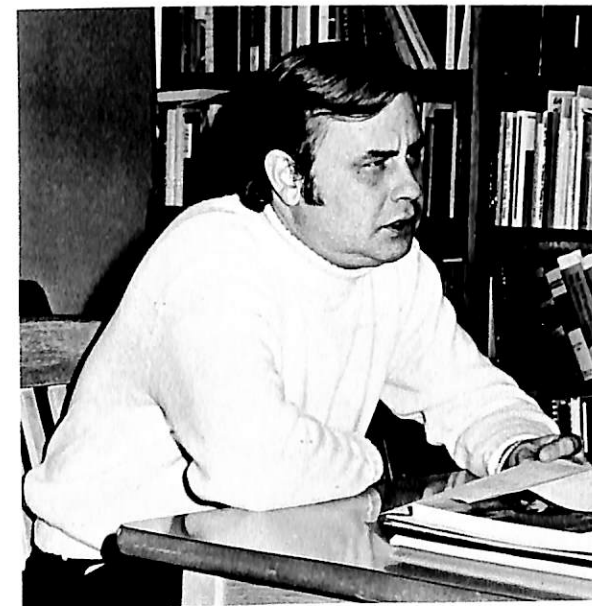
Dr. Clifford Hanson  
Professor of Philosophy and Religion



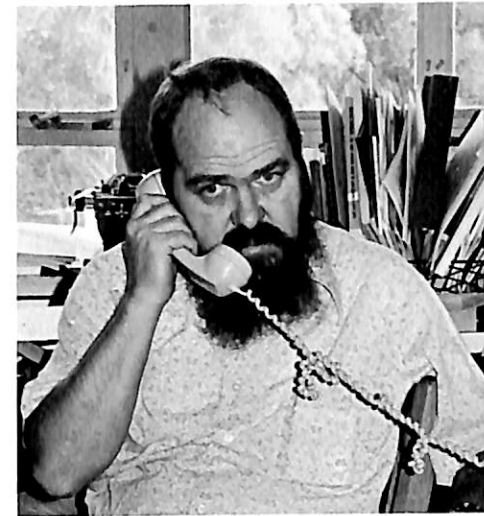
Dr. Delvin Hutton  
Assoc. Professor of Greek and Religion



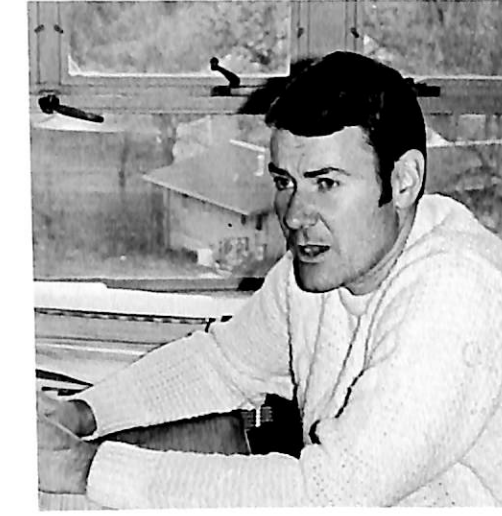
Mr. John Nielsen  
Assoc. Professor of Religion



Rev. Lothar Pietz  
Campus Pastor  
Instructor in Religion



Mr. Donald G. Warman  
Assist. Professor of History

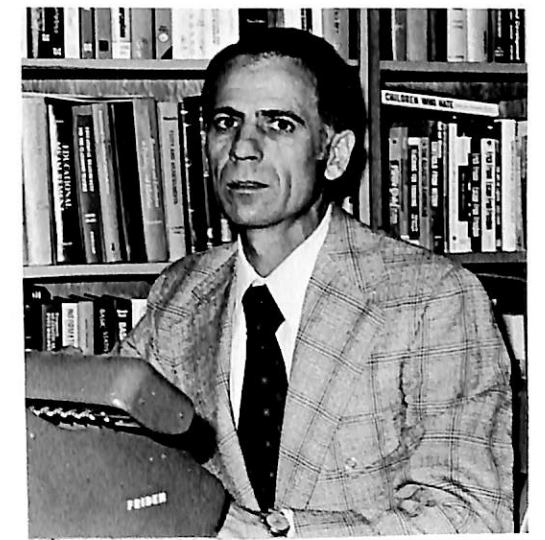


Dr. Richard Jorgensen  
Assist. Professor of History

# social science



Mr. Jack L. Hohensee  
Assist. Instructor of Sociology



Dr. Bernard Matthies  
Professor of Education and Psychology

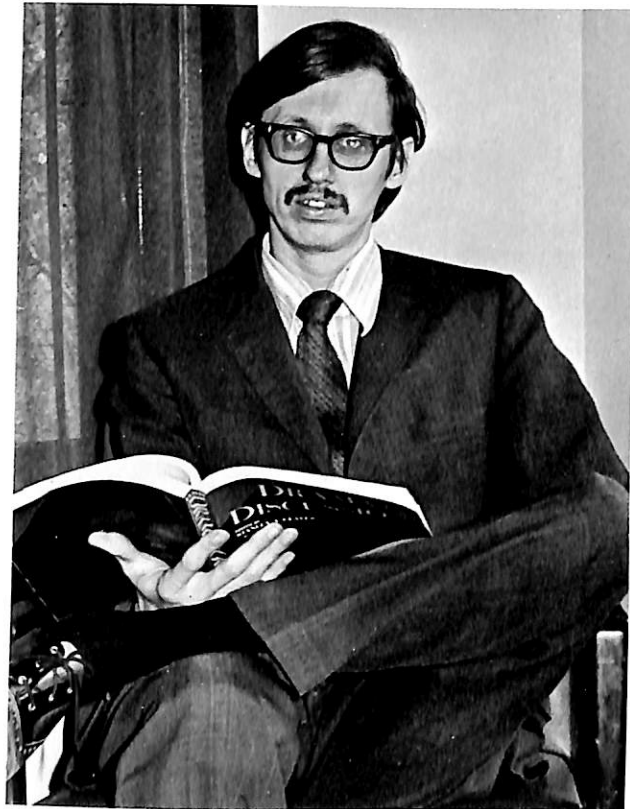


Mr. Bruce Moore  
Instructor in Anthropology



Mr. Harold Moseley  
Program Director of Social Work

speech  
theater



Mr. Dennis Henneman  
Assist. Professor of Speech  
Director of Drama



Mr. Darrell W. Dibben  
Assist. Professor of Speech

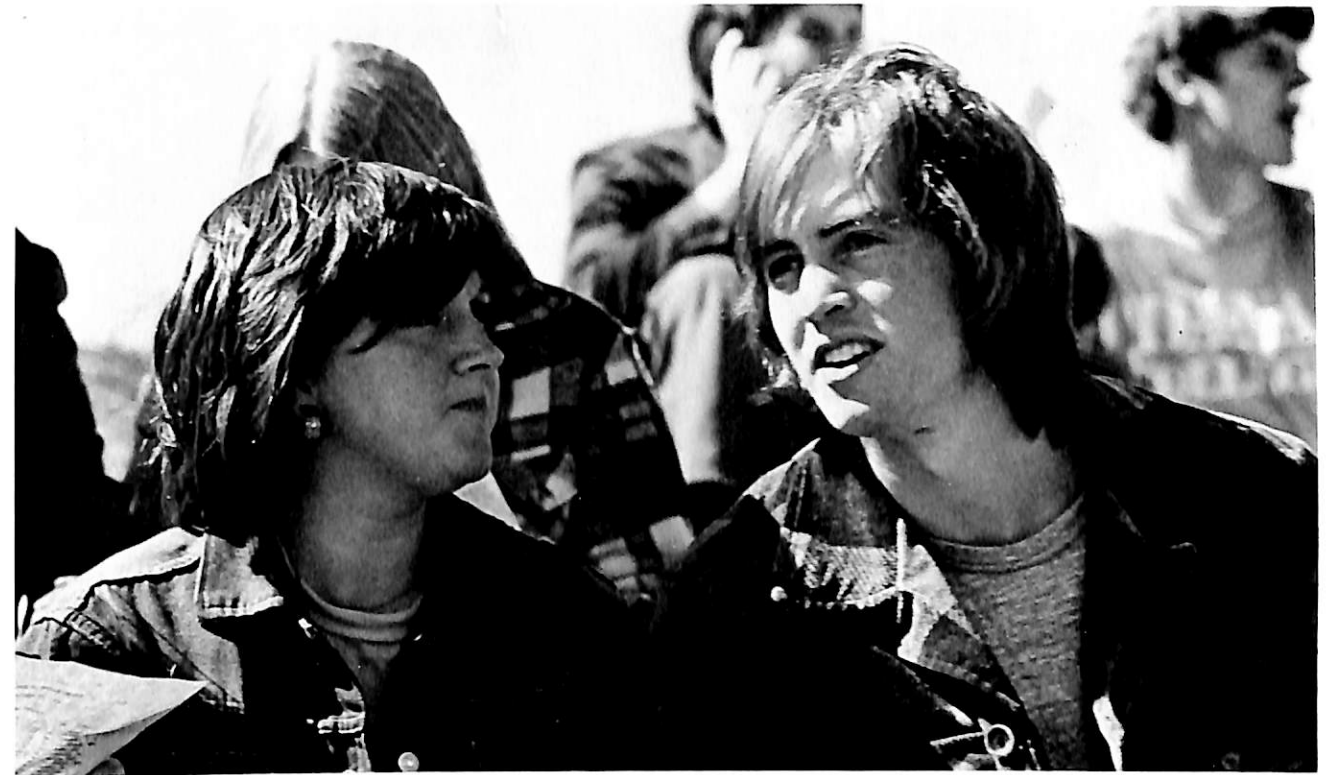


Dr. John Northwall  
Assoc. Professor of Speech  
Director of Church Relations and Continuing Education



some  
important  
people





students

# freshmen



Freshmen Class Officers: President, Jon Videbeck; Vice-President, Paula Christensen; Secretary, Dianne Larsen.

Aludogbu, Michael I  
Nigeria  
Andersen, Elvin T.  
Omaha, Nebraska  
Anderson, Jeffrey S.  
Tekamah, Nebraska  
Anderson, Kristen  
Omaha, Nebraska



Anderson, Mark W.  
Concord, California  
Andersen, Rodney G.  
Avoca, Iowa  
Andresen, John C.  
North Hills, Pennsylvania  
Arnvig, Carol L.  
Harlan, Iowa



Baker, Bradley E.  
Decatur, Nebraska  
Barry, Myrnn D.  
Woodbine, Iowa  
Bentzinger, Monique M.  
Cook, Nebraska  
Betts, James L.  
Omaha, Nebraska



Beune, Kay A.  
Dodge, Nebraska  
Boeck, Curtis L.  
Ida Grove, Iowa  
Boeck, Gary M.  
Ida Grove, Iowa  
Boyce, Janis L.  
Lakewood, Colorado



Brand, Susan E.  
Nickerson, Nebraska  
Brownfiels, Terry D.  
Arlington, Nebraska  
Bylund, William C.  
Avoca, Iowa  
Camblin, Bruce L.  
Omaha, Nebraska



Chambers, Jaymeson D.  
Craig, Nebraska  
Christensen, Diana L.  
Laurel, Nebraska



Christenson, Michael J.  
Craig, Nebraska  
Christensen, Paula D.  
Blaine, Minnesota



Christensen, Steven D.  
Minden, Nebraska  
Christensen, Tana T.  
Janesville, Wisconsin  
Coffey, Laura J.  
Fargo, North Dakota  
Cook, Anna L.  
Burlington, New Jersey

Cooke, Thomas E.  
Euclid, Ohio  
Cooper, Kim D.  
Omaha, Nebraska  
Cox, Bryan R.  
Lodgepole, Nebraska  
Damrow, Lisa L.  
Bruning, Nebraska



Davidheiser, James, Jr.  
Boyertown, Pennsylvania  
Davie, Mitchell J.  
Dunlap, Iowa  
Demant, David G.  
Fortuna, California  
Dimmitt, Dave M.  
Red Oak, Iowa



Downard, Dennis D  
Brooks, Iowa  
Durkin, Patrick J.  
Alsip, Illinois  
DuVal, David L.  
Onawa, Iowa  
Dykman, Catherine A.  
Overland Park, Kansas



Eccleston, Kathleen  
Towson, Maryland  
Fecht, Douglas C.  
Axtell, Nebraska  
Fenske, Evelyn M.  
Brisbane, Australia  
Foell, Charles A.  
Schaller, Iowa



Frey, Iris D.  
Lyons, Nebraska  
Gargulinski, Richard  
Tekamah, Nebraska  
Gengenbach, Marilyn S.  
Eustis, Nebraska  
Gerlt, Connie S.  
Omaha, Nebraska



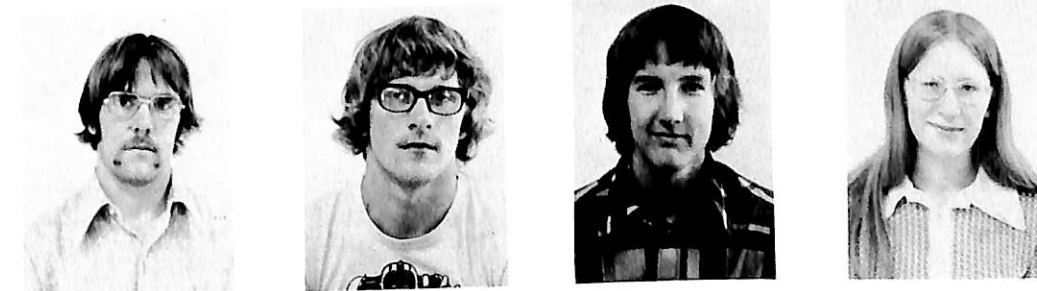
Gerwick, Linda J.  
Scribner, Nebraska  
Gibson, Roberta L.  
Kansas, Oklahoma  
Gilbert, Suzanne C.  
Eugene, Oregon  
Gill, Patricia L.  
Decatur, Nebraska



Goolsby, Bruce R.  
Kennard, Nebraska  
Gramlich, Melody J.  
Gretna, Nebraska  
Guhn, Karl R.  
Mt. Holly, New Jersey  
Gurnett, Thomas J.  
Omaha, Nebraska



Gustafson, Stanley D.  
Omaha, Nebraska  
Haas, Jerry A.  
Harlan, Iowa  
Hanson, Duane L.  
Storm Lake, Iowa  
Hansen, Nancy L.  
Omaha, Nebraska



Hastings, David L.  
Penns Grove, New Jersey  
Heim, Keith A.  
Persia, Iowa  
Heitmann, Stephen W.  
Hardy, Nebraska  
Hemcken, Cheryl  
Ft. Collins, Colorado



Hilgenkamp, Paul D.  
Scribner, Nebraska  
Jasa, Kenneth P.  
St. Edward, Nebraska  
Jenner, Debra K.  
Omaha, Nebraska  
Jensen, Kathleen G.  
Edina, Minnesota



Jepsen, Robert E.  
Chappell, Nebraska  
Jessen, Steven B.  
Chappell, Nebraska



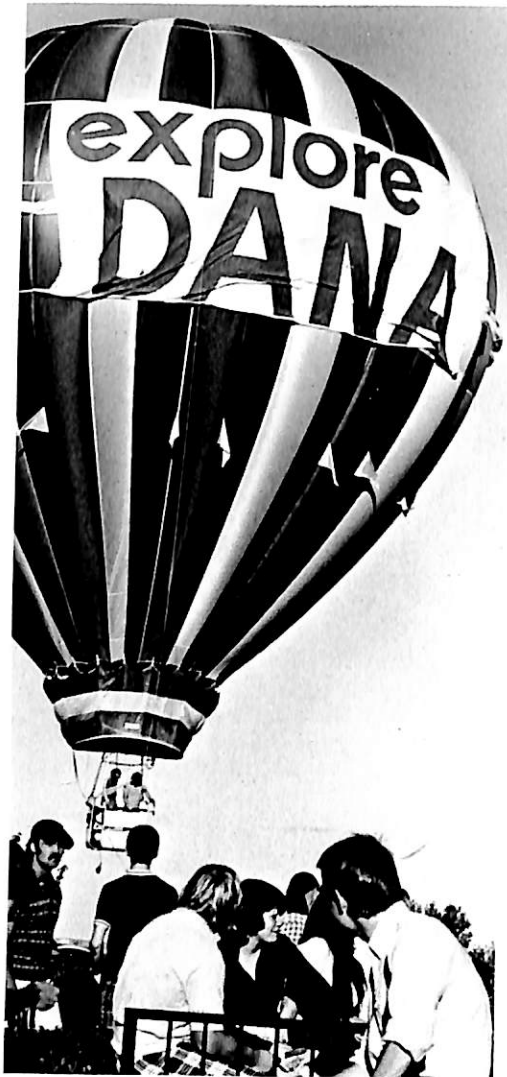
Johnson, Marta J.  
Anoka, Minnesota  
Johnsen, Sue N.  
Carbondale, Illinois



Jones, Connie K.  
Alta, Iowa  
Jones, Steven N.  
Millard, Nebraska



Jorgensen, Ann Marie  
Pinewood, Minnesota  
Kahlandt, Barbara A.  
Waterloo, Nebraska  
Kelso, Della R.  
Kailua, Hawaii  
Kesterson, Sandra Jo  
Maxwell, Nebraska



Knudsen, Dan C.  
Harlan, Iowa  
Knudsen, David C.  
Northfield, Minnesota  
Knudtson, Lee J.  
Harlan, Iowa  
Kranz, Susan A.  
Omaha, Nebraska



Kroenke, Brent L.  
Omaha, Nebraska  
Kulzer, Howard L.  
Norwalk, California  
Kumm, Robin R.  
Harlan, Iowa  
Larsen, Diane K.  
Kenosha, Wisconsin



Lee, Dennis W.  
Moorhead, Iowa  
Lodes, Thomas J.  
Omaha, Nebraska  
Lundgren, Melvin E.  
Erie, Pennsylvania  
Madsen, Karen M.  
Buffalo, Wyoming



Mathews, Alisa A.  
Woolstock, Iowa  
McCormick, Mary Ellen  
Bellevue, Nebraska  
McMahan, Larry D.  
Missouri Valley, Iowa  
Meyer, Joel N.  
Everly, Iowa

Morgan, Jane A.  
Hazelton, Iowa  
Mountain, Robert H.  
Brown Mills, New Jersey



Narjes, Beverly  
Lodgepole, Nebraska  
Nash, Richard A.  
Cleveland, Ohio  
Nelson, Sarah E.  
Rolla, North Dakota  
Ness, Alan D.  
Papillion, Nebraska



Neve, Susan E.  
Perry, Iowa  
Nielsen, Anne E.  
Blair, Nebraska  
Nielsen, Jeanmarie A.  
Creighton, Nebraska  
Niemann, Lindsey L.  
St. Edward, Nebraska



O'Brien, Robert J.  
Schleswig, Iowa  
Oelrichs, Rhonda L.  
Mora, Missouri  
Okafor, Felix C.  
Paris, France  
Okasi, Charles C.  
Nigeria



Olson, David R.  
Fairfield, California  
Olson, Kathleen A.  
Portage, Indiana  
Ozaydin, Danyal R.  
Council Bluffs, Iowa  
Paul, Roxanne S.  
Blair, Nebraska



Paulsen, Douglas A.  
Omaha, Nebraska  
Persaud, Gordon H.  
Sioux City, Iowa  
Peterson, Cindy A.  
Alta, Iowa  
Peterson, Debra L.  
Herman, Nebraska



Pertersen, Keith D.  
Honeycreek, Iowa  
Peterson, Sandra K.  
Alta, Iowa  
Pfeuffer, Clayton J.  
Cranbury, New Jersey  
Pond, Sheryl L.  
Nodaway, Iowa



Radloff, Jane E.  
Ottumwa, Iowa  
Rasmussen, Gwen J.  
Petaluma, California  
Redel, Gary A.  
Corning, Iowa  
Reque, Donna M.  
Sedalia, Missouri



Rettig, Bambi L.  
Council Bluffs, Iowa  
Reynolds, Robert C.  
Amherst, Ohio  
Riley, Warren J.  
Norway, Iowa  
Robinson, Carrolyn J.  
Ft. Calhoun, Nebraska



Roe, Suzanne R.  
Council Bluffs, Iowa  
Roecker, Todd B.  
Harlan, Iowa  
Ronnfeldt, Rev A.  
Hancock, Iowa  
Ruth, Bonnie J.  
E. Spencer, Iowa

Rydstrom, Kayla I.  
Alta, Iowa  
Sample, Thomas M.  
Sandusky, Ohio  
Sandager, Susan K.  
Jackson, Minnesota  
Scade, Craig R.  
McKees Rocks, Pennsylvania



Scheuring, Yvonne M.  
Defiance, Iowa  
Schmidt, Roger W.  
St. Paul, Minnesota  
Schmitt, Marie J.  
Dow City, Iowa  
Schroeder, Monica M.  
Crofton, Nebraska



Schutt, Alwin D.  
Minden, Iowa  
Schwandt, Roxanne R.  
Beatrice, Nebraska  
Schweer, Barry S.  
Daykin, Nebraska  
Smith, Jodel M.  
Omaha, Nebraska



Smith, Susan R.  
Council Bluffs, Iowa  
Sonderup, Sandra E.  
Blair, Nebraska  
Sorensen, Mark S.  
Harlan, Iowa  
Sweetman, Cindy L.  
Belvidere, Illinois



Swenson, Stephen A.  
Richfield, Minnesota  
Thayer, Scott M.  
Davenport, Iowa  
Thielen, Anthony M.  
Harlan, Iowa  
Thomas, Larry M.  
Blair, Nebraska



Thomsen, Steven G.  
Lyons, Nebraska  
Tripp, Leslie W.  
Blair, Nebraska  
Tyler, Kirk J.  
Atlantic, Iowa  
Vannier, Debra D.  
Gothenburg, Nebraska



Videbeck, Jon D.  
Evanston, Illinois  
Vohs, James M.  
Galva, Iowa  
Walker, Thomas Hayes  
Clark Fork, Idaho  
Wallace, Gerald P.  
Creston, Iowa



Wallman, Malinda Jo  
Martell, Nebraska  
Wichman, Rebecca J.  
Ft. Calhoun, Nebraska  
Wigg, Roger A.  
Omaha, Nebraska  
Willadsen, Allison S.  
Sioux Falls, South Dakota



Wilson, Gwendy L.  
Council Bluffs, Iowa  
Winslow, Michael S.  
Oregon, Ohio  
Wittrock, Edwin K.  
Neligh, Nebraska  
Womack, Katherine M.  
Des Moines, Iowa



Zimmerman, Craig N.  
Middleborg Hts., Ohio  
Jensen, Christian  
Council Bluffs, Iowa

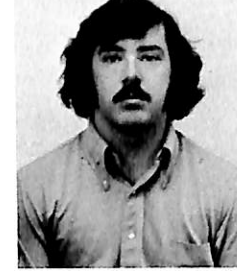
# second semester students



Aludogbu, George U.  
Nigeria  
Bendinger, Dennis  
Ralston, Nebraska  
Brandon, Christine  
Missouri Valley, Iowa  
Branson, Barbara  
Blair, Nebraska



Chimah, Kristian  
Nigeria  
Dwyer, Kevin  
Mt. Lake, New Jersey  
Drews, Ben  
Topeka, Kansas  
Earleywine, Charles H.  
Little Sioux, Iowa



Elliott, Wendy Jo  
Sioux Falls, South Dakota  
Eyo, Eyo Efiog  
Nigeria  
Gatton, Dawn Francine  
Columbus, Ohio  
Griffith, John M.  
Council Bluffs, Iowa



Hansen, Stuart August  
Marshfield, Wisconsin  
Houston, Richard Waldon  
Oxnard, California  
Jones, Mark A.  
Omaha, Nebraska  
Kegler, John  
Herman, Nebraska



Kniep, Cheryl Marlene  
Aurora, Colorado  
Kroenke, Bryan Leo  
Omaha, Nebraska  
Kuhl, David Mark  
Missouri Valley, Iowa  
Larsen, Peggy Rae  
Blair, Nebraska



Miller, Gregory R.  
Trenton, New Jersey  
Nwankwo, Leonard C.  
Nigeria  
Paasch, Christine Marie  
Omaha, Nebraska  
Pearson, Kenneth D.  
Bedminster, New Jersey



Pettiford, Karen Rene  
Colorado Springs, Colorado  
Preston, Dennis Lee  
Lyons, Nebraska  
Ilcken, Gregory  
Grinnell, Iowa  
Irono, Ndubisi Nwakaire  
Nigeria



Zabel, Patricia Ann  
Cook, Nebraska

# sophomores



Sophomore Class Officers: President, Mike Schacht; Vice-President, Fred Miller; Secretary, Jane DeVasure; Treasurer, Janis Miller.

Beck, Barbara R.  
Santa Ana, California  
Behuniak, Michael J.  
Newburgh, New York  
Bertelsen, Byron J.  
Missouri Valley, Iowa  
Borglum, Sherril  
Elkhart, Indiana



Borkhus, Cynthia  
Racine, Wisconsin  
Boysen, Marsha K.  
Avoca, Iowa  
Bryant, George O.  
Omaha, Nebraska  
Campbell, Carolyn  
Council Bluffs, Iowa



Cobine, Nancy L.  
West Des Moines, Iowa  
Coles, Faye D.  
Bridgeport, New Jersey  
Comfort, James E.  
Blencoe, Iowa  
Daniel, Gideon  
Addis Ababa, Ethiopia



Davies, William B.  
Euclid, Ohio  
DeVasure, Jane  
Tekamah, Nebraska  
Eledu, Preston C.  
Nigeria  
Ellison, Julie A.  
Beresford, South Dakota



Fevold, Ruth  
Gowrie, Iowa  
Flanagan, Bryan J.  
Council Bluffs, Iowa  
Fleming, Kathleen K.  
Omaha, Nebraska  
Gabelhouse, Beth M.  
Omaha, Nebraska



Garrett, Timson  
Minden, Nebraska  
Gerace, Joseph  
Magnolia, New Jersey  
Gilpin, Jeffrey L.  
Macy, Nebraska  
Hagen, Karyn L.  
Loveland, Colorado

Hanen, David G.  
Fremont, Nebraska  
Hansen, Peggy M.  
Aurora, Colorado  
Harboe, Kathryn  
Lakewood, Colorado  
Harris, Jerrie L.  
Blair, Nebraska



Hartje, Julia E.  
McClelland, Iowa  
Herbert, Michael S.  
Horsham Twp., Pennsylvania  
Hodges, Scott W.  
Sioux City, Iowa  
Hult, Dan E.  
Omaha, Nebraska



Jensen, Frederik  
Raymond, Minnesota  
Jeppesen, Karen E.  
Council Bluffs, Iowa  
Johnsen, David  
Huntington Beach, California  
Johnson, Linda L.  
Lakewood, Colorado



Johnson, Renae  
Hershey, Nebraska  
Joslin, Lyle  
Blair, Nebraska  
Kahlandt, Barbara  
Blair, Nebraska  
Kelly, Kit A.  
Woodbine, Iowa



Kennett, Shirley  
Council Bluffs, Iowa  
Key, Douglas  
Tekamah, Nebraska  
Kimm, Steven  
Norway, Iowa  
Klotz, Steven E.  
Lincoln, Nebraska



Knoell, Lora K.  
Fremont, Nebraska  
Larson, Bradley  
Milford, Iowa  
Leach, Robert  
Hatboro, Pennsylvania  
Lefeber, Stephen M.  
Minden, Iowa

Lensch, Rebecca A.  
Carroll, Iowa  
Link, Jayne W.  
Scarborough, Maine  
Lippert, Janet C.  
St. Francis, Kansas  
Lorraine, Lynn G.  
Bennington, Nebraska



Mai, Kathy Jo  
Ft. Collins, Colorado  
Maschman, Curtis  
Daykin, Nebraska  
Matties, Jane C.  
Omaha, Nebraska  
Mayo, Timothy  
Blair, Nebraska



Miller, Fredrick  
Rocky River, Ohio  
Miller, Janis  
Hancock, Iowa  
Nance, Denise  
Philadelphia, Pennsylvania  
Nelson, Jolene R.  
Axtell, Nebraska



Neve, Lief  
Tokyo, Japan  
Nielsen, Lori J.  
Onawa, Iowa  
Noyes, Malcolm A.  
Westbrook, Maine  
Oestmann, Paul L.  
Humboldt, Nebraska



Peltonen, Wanda L.  
Wilmette, Illinois  
Petersen, Elizabeth K.  
Omaha, Nebraska  
Petersen, Lowell D.  
Denison, Iowa  
Pieper, Constance  
St. Paul, Minnesota



Plugge, Richard  
Blair, Nebraska  
Ponalo, Buiketlo  
South Africa  
Price, Terry  
Omaha, Nebraska  
Rasmussen, Alan R.  
St. Paul, Nebraska



Rethwisch, Joy L.  
Wayne, Nebraska  
Rettedal, Carol  
Sioux Falls, South Dakota  
Rice, John A.  
Paris, Ohio  
Richter, Jann D.  
Adair, Iowa

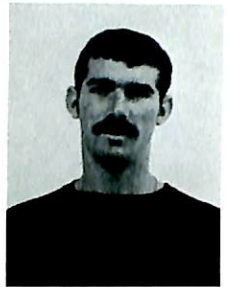


Ryan, David  
Omaha, Nebraska  
Sand, Bonnie  
Audubon, Iowa  
Schacht, Michael E.  
Neligh, Nebraska  
Schjodt, Sondra  
Blair, Nebraska

Scholz, Kathleen A.  
Omaha, Nebraska  
Schur, Mary E.  
Oxford, Mass.  
Smith, Bruce E.  
Norwalk, Ohio  
Smith, George  
Winnebago, Nebraska



Spicer, Edgar III  
Lambertville, New Jersey  
Steffens, Shirley  
Auburn, Nebraska  
Stokes, Dawn K.  
Sheridan, Wyoming  
Stout, Margery L.  
Omaha, Nebraska



Talmadge, Timothy G.  
Omaha, Nebraska  
Taylor, Darwin L.  
Shelby, Iowa  
Thompson, Jeffrey, A.  
Dunlap, Iowa  
Tiby, Mark L.  
Woodbine, Iowa



Triplett, Thomas F.  
Blair, Nebraska  
Vakshall, Melissa  
New York, New Jersey  
Vernell, Herman  
Omaha, Nebraska  
Waggener, Paula C.  
Aurora, Colorado



Waggoner, Timothy R.  
Aurora, Colorado  
Werner, Vicki D.  
Omaha, Nebraska  
Winkelman, Deborah  
Boulder, Colorado  
Wright, Arvis  
Elmhurst, New York



Wuchter, Roy O.  
Whitehall, Pennsylvania  
Young, Arnold  
Palmerton, Pennsylvania





# juniors



Junior Class Officers: President, Mike Stewart; Vice-President, Paul Johnson; Secretary, Tari Therkelsen; Treasurer, Steve Callaghan.

Achalu, Emmanuel  
Nigeria  
Acolatse, Gqdwin K.  
Accra, Ghana  
Allensworth, Richard  
Henderson, Iowa  
Anderson, Laura  
Blair, Nebraska



Barber, Laurie A.  
Fremont, Nebraska  
Barber, Robert  
Fremont, Nebraska  
Barnett, Duane  
Underwood, Iowa  
Barratt, Roger  
Irwin, Iowa



Beck, John T.  
Santa Ana, California  
Behrends, Nancy A.  
Elkcreek, Nebraska  
Berntson, Steven G.  
Paullina, Iowa  
Bollinger, Mary F.  
Omaha, Nebraska



Bresemann, Robert W.  
Mt. Prospect, Illinois  
Bronson, Giles F.  
Pinehurst, Indiana  
Brown, Linda K.  
Omaha, Nebraska  
Brown, Lori J.  
Omaha, Nebraska



Callaghan, Steve C.  
Council Bluffs, Iowa  
Carlson, Lance G.  
Beatrice, Nebraska  
Carlson, Randall S.  
Harcourt, Iowa  
Cutler, Dennis  
Bellevue, Nebraska



Damkroger, Gary  
Clatonia, Nebraska  
Day, Kent W.  
Sioux Falls, South Dakota  
Dudley, Ricky L.  
Omaha, Nebraska  
Dye, Daniel R.  
Cedar Rapids, Iowa



Ekanem, Ekanem E.  
Nigeria  
Epperson, Randall W.  
Blair, Nebraska  
Erickson, Dawn  
Tekamah, Nebraska  
Escher, John Jr.  
Omaha, Nebraska



Forney, Steven W.  
Ponca, Nebraska  
Giovanni, Michael A.  
Whitehall, Pennsylvania  
Gould, Dan J.  
Ralston, Nebraska  
Haack, Becky Jo  
Loveland, Colorado



Hanson, Alan K.  
Storm Lake, Iowa  
Harris, Kevin R.  
Onowa, Iowa  
Heistand, Mark A.  
Woodbine, Iowa  
Henriksen, Mary Jo  
Atlantic, Iowa



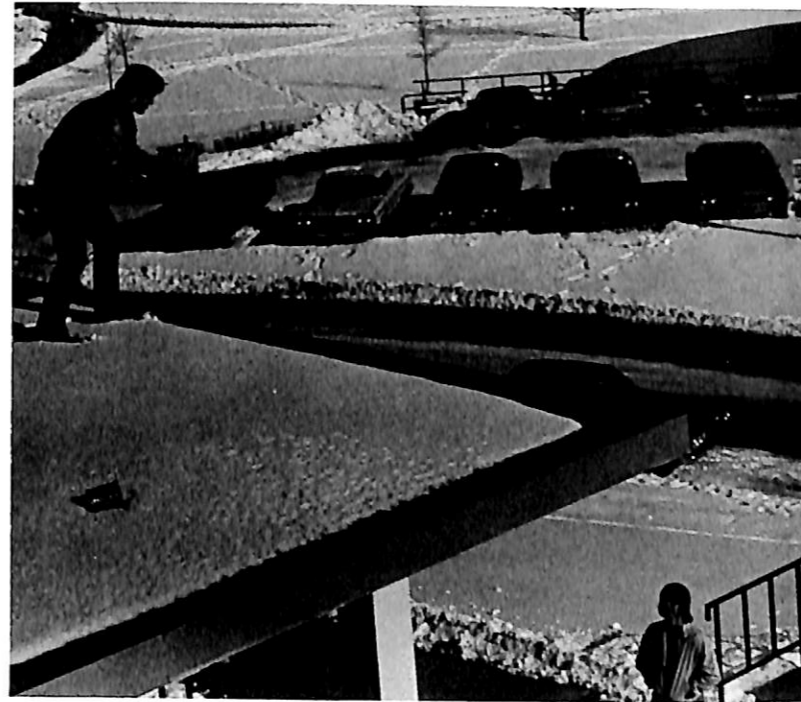
Hertz, George P.  
Pittsburgh, Pennsylvania  
Heuring, Patricia A.  
Bellevue, Iowa  
Hibbing, John R.  
Paullina, Iowa  
Hoch, Dennis  
Omaha, Nebraska



Hogden, Jeffrey E.  
Galesville, Wisconsin  
Howsden, Judy K.  
Alma, Nebraska  
Hundtoft, Paul A.  
Blair, Nebraska  
Ike, Justus  
Nigeria



Johnson, Paul D.  
Carnegie, Pennsylvania  
Jones, David R.  
Monroeville, Ohio  
Jones, Robert A.  
Mineola, Iowa  
Knudtson, Lucinda S.  
Harlan, Iowa



Knuth, Patricia E.  
Stover, Missouri  
Krohn, Kristine  
Brush, Colorado  
Kronberg, Kent W.  
Ralston, Nebraska  
Kruder, William III  
Hometown, Illinois



Kuhr, Sherry L.  
Blair, Nebraska  
Larson, Carlton D.  
Wolf Point, Montana  
Larson, James A.  
Shenandoah, Iowa  
Larsen, Judith  
Fremont, Nebraska

Larson, Steven D.  
Omaha, Nebraska  
Lensch, Diane  
Rolling Meadows, Illinois  
Lizer, Kathleen  
Belvidere, Illinois  
Lower, Jeffrey L.  
Omaha, Nebraska



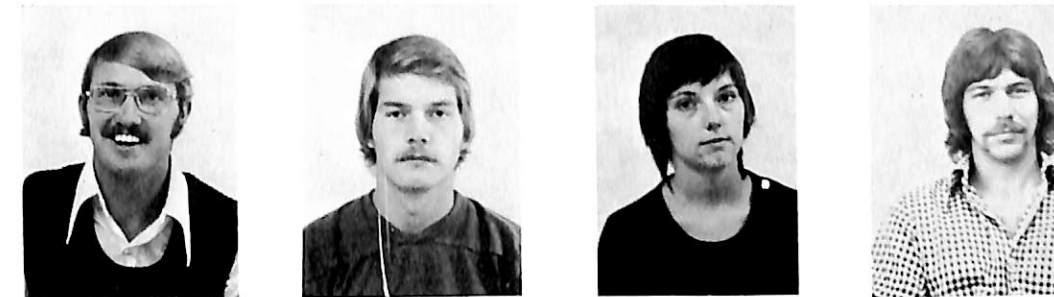
Luce, Jeffrey E.  
Falmouth, Maine  
Maliszewski, Jeffrey P.  
Parlin, New Jersey  
Martens, Steven P.  
Harlan, Iowa  
McGuire, Dennis M.  
Wisner, Nebraska



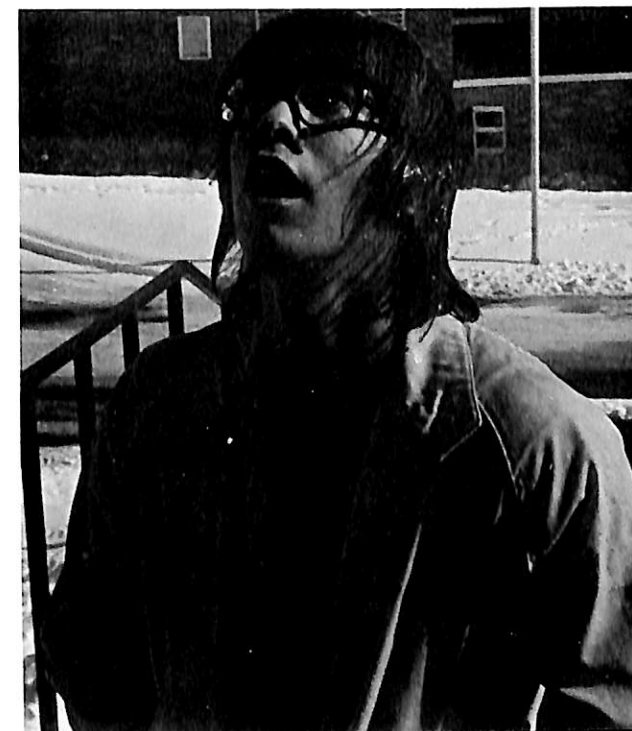
Neve, Loyd E.  
Blair, Nebraska  
Nielsen, Jane E.  
Blair, Nebraska  
Nygaard, Linda M.  
Northfield, Minnesota  
Olson, Barry W.  
Minnetonka, Minnesota



Otero, Paul M.  
Omaha, Nebraska  
Parkhill, Christine  
Security, Colorado  
Peetz, Terry  
Omaha, Nebraska  
Plymale, William J.  
Omaha, Nebraska



Poldberg, Mark L.  
Escondido, California  
Probst, Steven M.  
Syracuse, Nebraska  
Qualley, Dawn  
Tekamah, Nebraska  
Rasmussen, Gary  
Blair, Nebraska



Rubio, Joan A.  
Bellevue, Nebraska

Menz, David B.  
Fairport, New York  
Miller, Julie K.  
Hancock, Iowa  
Musick, Marilyn J.  
Blair, Nebraska  
Nelson, Dennis R.  
Council Bluffs, Iowa



Sander, Hannelore  
Omaha, Nebraska

Schermerhorn, Ann  
St. James, Minnesota  
Schmeeckle, Diane E.  
Eustis, Nebraska  
Schou, Deborah, D.  
Albert Lea, Minnesota  
Seyler, Van A.  
Alma, Nebraska



Shaw, Lester  
Walthill, Nebraska  
Sietsema, Karen R.  
Tabor, Iowa  
Sorick, Jullian L.  
Missouri Valley, Iowa  
Staby, Mary E.  
Chadron, Nebraska



Stevenson, Sheila K.  
Petersburg, Nebraska  
Stewart, Diane  
Lincoln, Nebraska  
Stewart, Michael V.  
Crofton, Nebraska  
Sutton, John I.  
Blair, Nebraska



Teslow, Sandra  
Sioux Falls, South Dakota  
Therkelsen, Tari S.  
Ft. Lauderdale, Florida  
Thompson, Jacquelyn R.  
Dunlap, Iowa  
Thorson, Susan K.  
Reno, Nevada



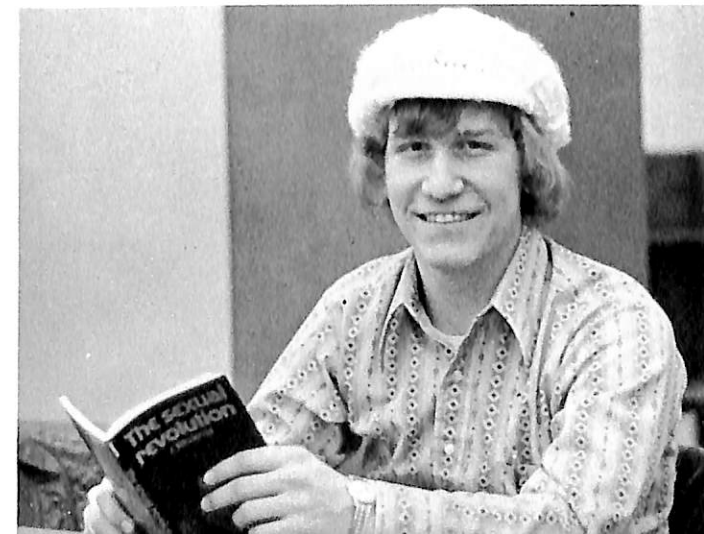
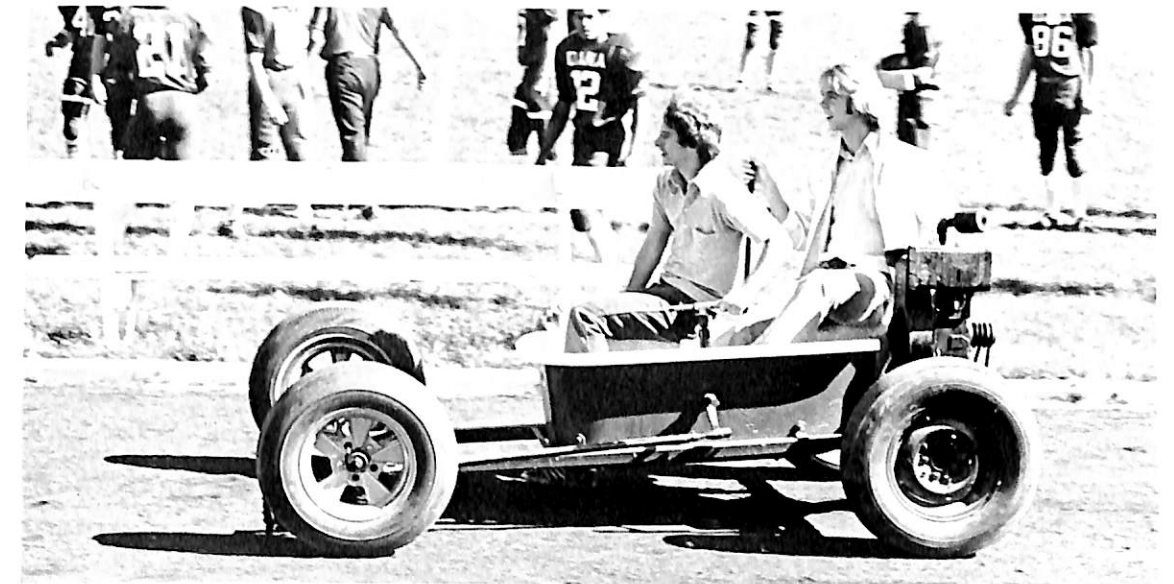
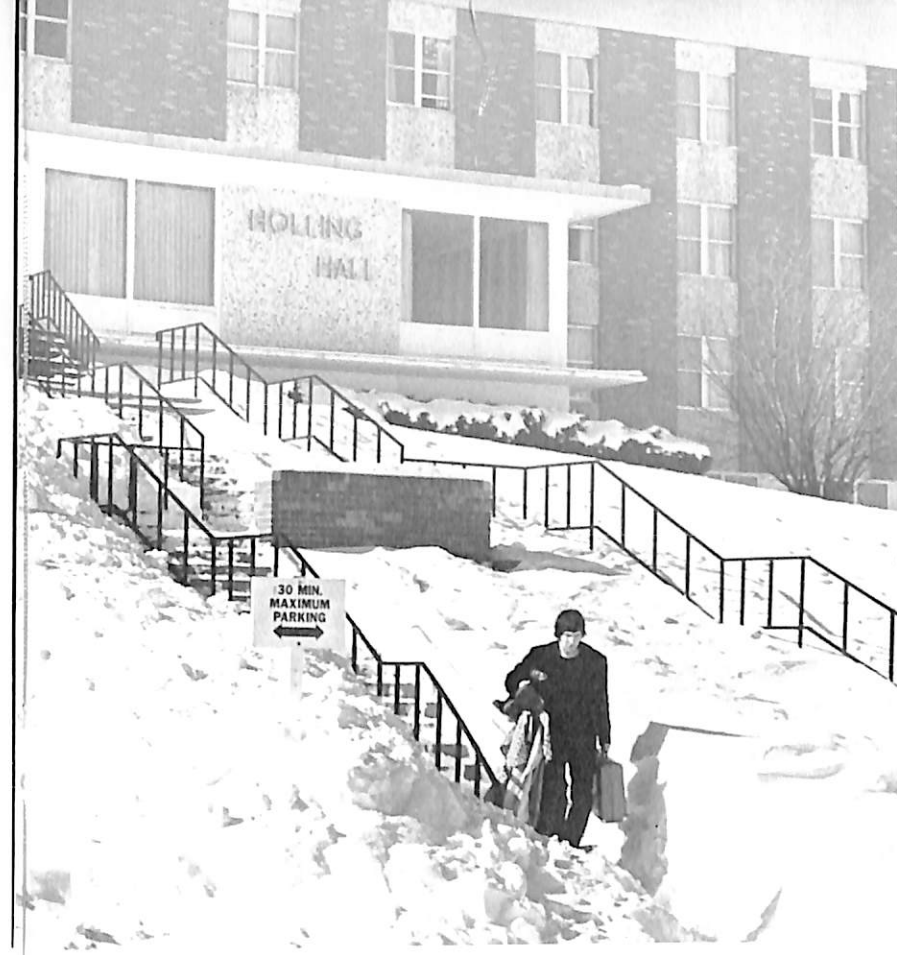
Urdahl, Michael B.  
Schnecksville, Pennsylvania  
Walker, Kristin  
Sandpoint, Idaho  
Walker, Thomas Hayes  
Clark Fort, Idaho  
Wallman, Debra A.  
Martell, Nebraska



Walth, Janet M.  
St. Paul, Nebraska  
Warman, Christopher F.  
Blair, Nebraska  
Weller, Dennis P.  
Boyertown, Pennsylvania  
West, David M.  
Arlington Hts., Illinois



Westphal, Celia L.  
Fontanelle, Iowa  
Williams, Steven J.  
Edina, Minnesota  
Wood, Jean A.  
Blair, Nebraska

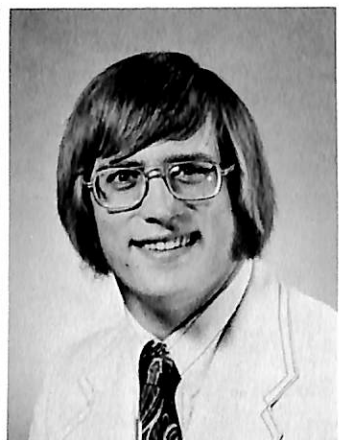


# seniors

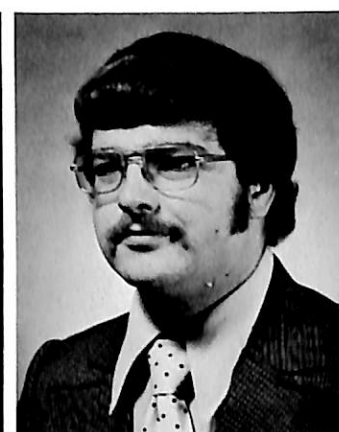
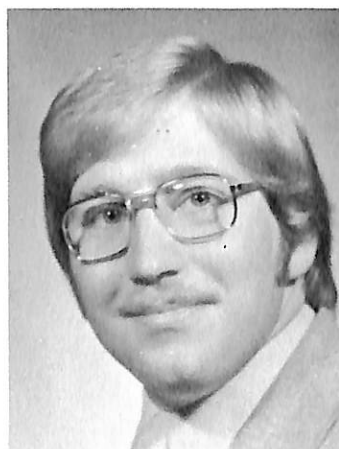
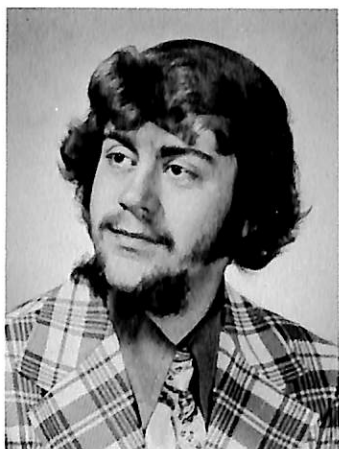


Senior Class Officers: President, Gary Erbes; Vice-President, Chris Thompson; Secretary, Kathy Berntson; Treasurer, Carol Miller.

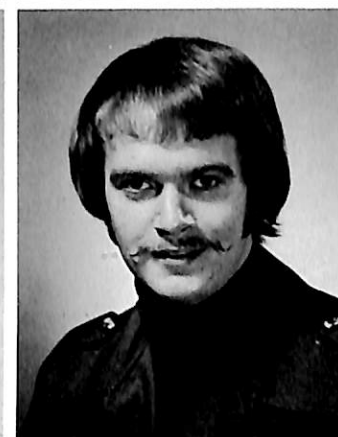
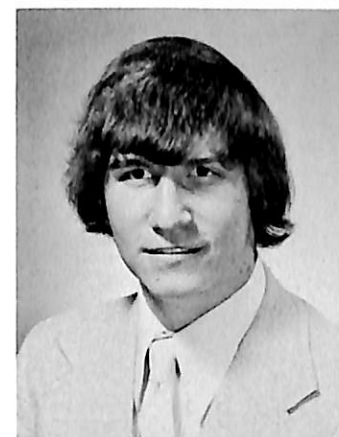
AHRENS, MERCEDES ELAINE  
Hartsburg, Illinois  
Sociology  
ANDERSEN, BRIAN PAUL  
Audubon, Iowa  
English, History  
ANDERSEN, KATHRYN L.  
Soldier, Iowa  
Art



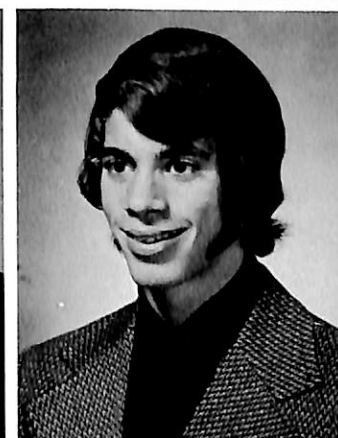
ATKINS, BONNIE GORDON  
Omaha, Nebraska  
Speech, Theater  
BALTZ, EVERETT D. M.  
Decorah, Iowa  
General Science  
BATES, BRUCE M.  
Glidden, Iowa  
Elementary Education



BERNTSON, KATHRYN A.  
Paullina, Iowa  
Elementary Education  
CHAPMAN, RANA L.  
Anita, Iowa  
Elementary Education  
CHRISTIENSEN, KURT D.  
Westbrook, Maine  
Business Administration



CLANTON, GERALD DAVID  
Omaha, Nebraska  
Business Admin., Econ.  
COFFEY, PATRICK J.  
Fargo, North Dakota  
Physical Education  
COLLIN, BENT  
Seattle, Washington  
Law Enforcement



DEMANT, PAUL  
Fortuna, California  
Sociology  
ERBES, GARY MAX  
Greenfield, Iowa  
Biology, Chemistry  
ERDMAN, HAROLD F.  
Belmond, Iowa  
Business Admin., Econ

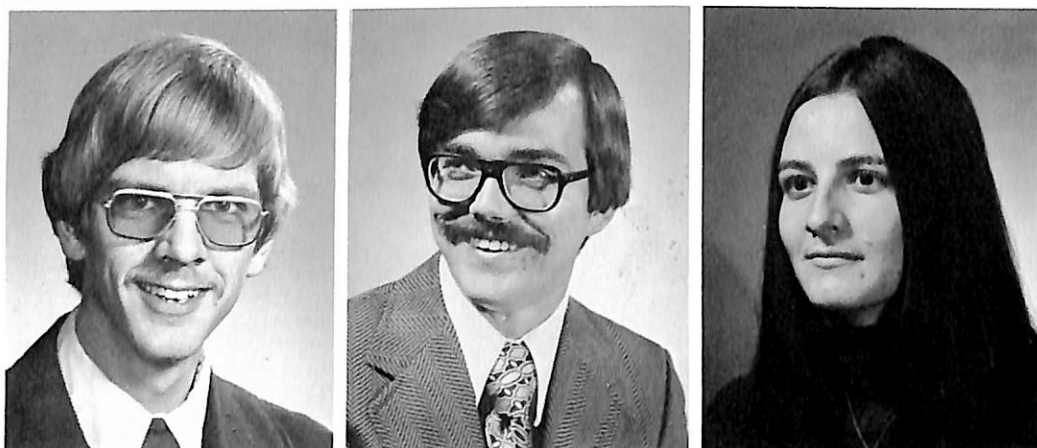


FORMANEK, LAURIE R.  
Council Bluffs, Iowa  
Elementary Education  
FREDRICHSEN, GREG  
Council Bluffs, Iowa  
Business Administration  
GIBBS, RANDALL W.  
Phillipsburg, Kansas  
Sociology

GIBSON, CONSTANCE V.  
Omaha, Nebraska  
Art  
GRIFFIN, JO ELLEN  
Council Bluffs, Iowa  
Social Work  
GROAT, TRICIA  
Madang, Papua, New Guinea  
Art, English



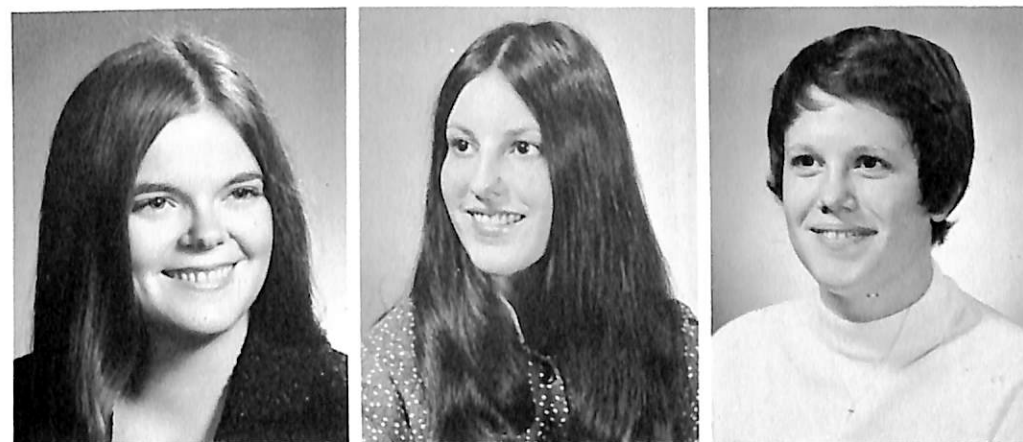
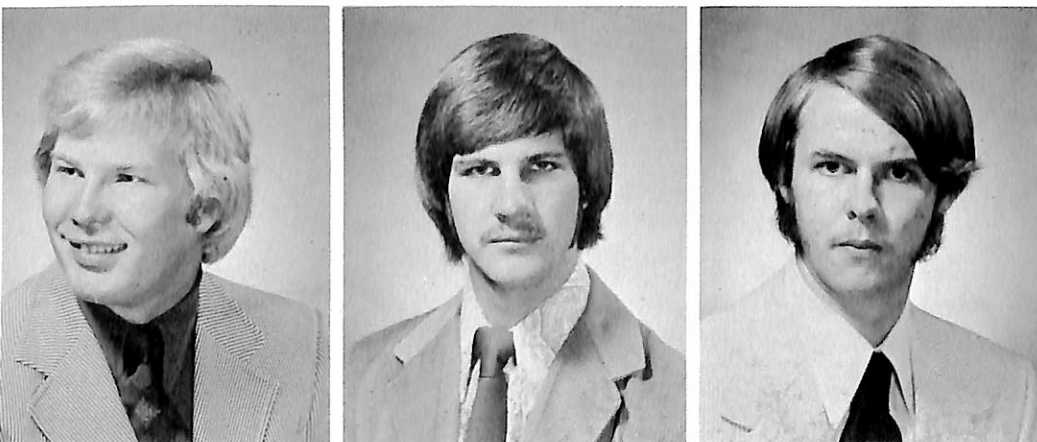
GRORUD, MARK A.  
Centerville, South Dakota  
Music, Religion  
GRUNER, MARK O.  
Denver, Colorado  
Sociology, Pre-Sem.  
HIEMKE, RITA K.  
Hartland, Wisconsin  
Elementary Education



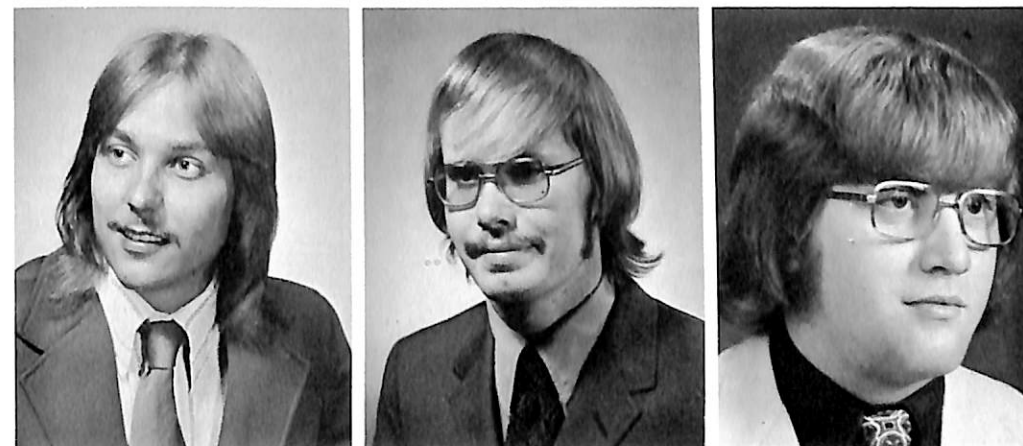
JACOBSEN, JOHN CHRISTIAN A.  
Milwaukee, Wisconsin  
Religion  
JOHNSON, JILL  
Sioux City, Iowa  
Psychology, Sociology  
JOHNSON, LAYNE MARK  
Nerstrand, Minnesota  
Biology



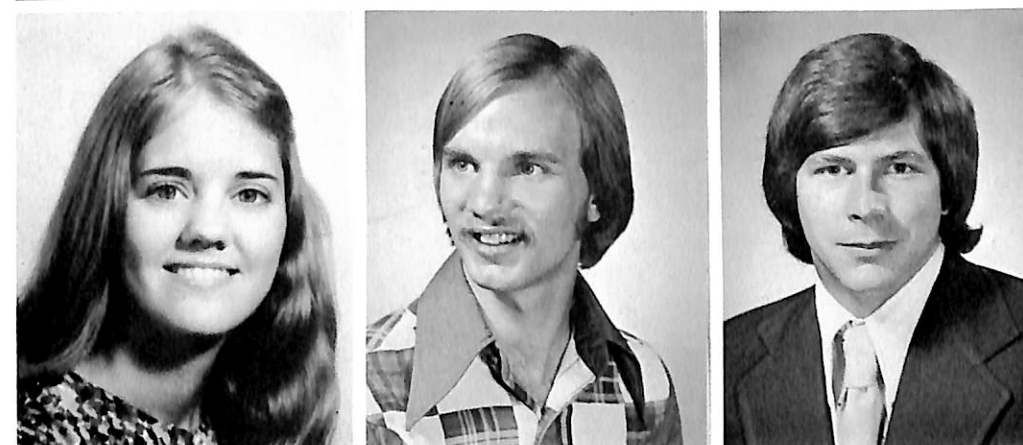
JOHNSON, STANLEY  
Brayton, Iowa  
Chemistry  
JOHNSON, TIMOTHY PAUL  
Huntington Beach, Calif.  
Biology, History  
KALAL, GREGORY A.  
Dearborn Heights, Michigan  
Biology, Gen. Science



KING, KATHRINE A.  
Griswold, Iowa  
Sociology, Anth.  
KNIEP, DIANE R.  
Aurora, Colorado  
Religion, Sociology  
KOENIG, ILENE  
Royal, Iowa  
Elementary Education



KOVALSKAS, JAMES  
Chicago, Illinois  
Music Education  
LARSON, JAMES L.  
Cottage Grove, Wisconsin  
Elementary Education  
LARSON, DAVID J.  
Primghar, Iowa  
Sociology, Science



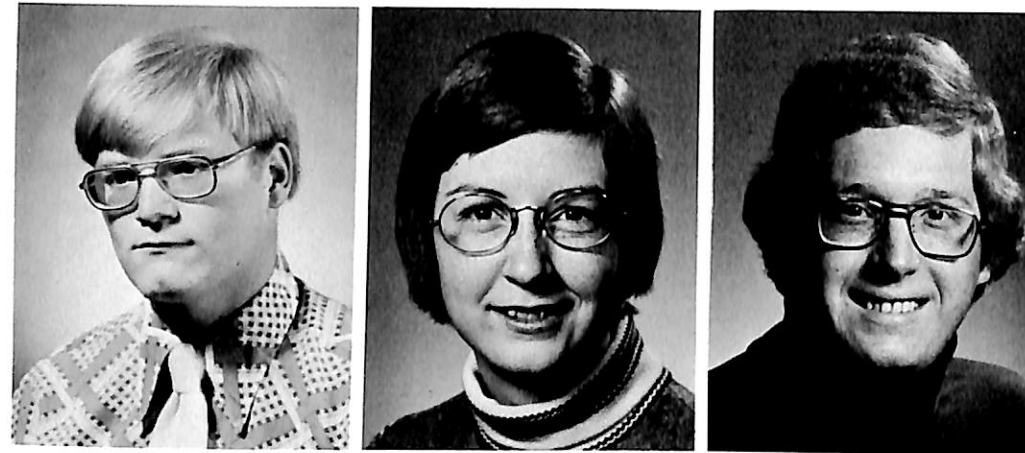
LARSEN, DIANE E.  
Blair, Nebraska  
Music  
LAURITSEN, GENE HARVEY  
Fort Calhoun, Nebraska  
Business Administration  
LINDAHL, WILLIAM  
Rock Island, Illinois  
Business Administration



LOESCHKE, BRENDA I.  
Canby, Minnesota  
Elementary Education  
MADSEN, GARY L.  
Audubon, Iowa  
Biology  
MARTIN, JACK GREGORY  
Waupaca, Wisconsin  
Physical Education



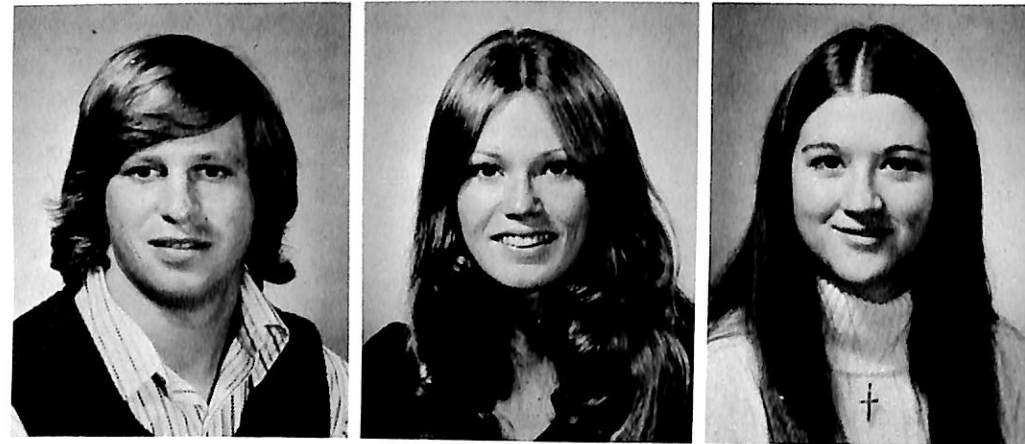
McCALLUM, MICHAEL D.  
Council Bluffs, Iowa  
Accounting  
MEYER, CATHY J.  
Omaha, Nebraska  
Elementary Education  
MYER, JEFF R.  
Everly, Iowa  
Music



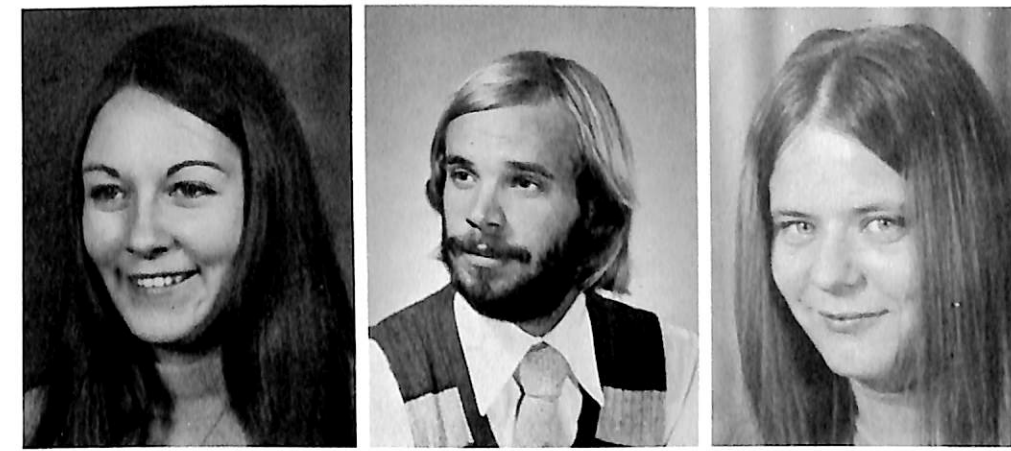
MEYER, JENNIFER  
Everly, Iowa  
Music  
MILLER, CAROL J.  
Schleswig, Iowa  
Accounting  
MILLER, LORNA L.  
Omaha, Nebraska  
English



NASLUND, DOUG  
Schaller, Iowa  
Recreation, Health  
NURSE, JANET  
Council Bluffs, Iowa  
Art Education  
PAULSEN, KATHY JOLENE  
Avoca, Iowa  
Sociology, Psychology



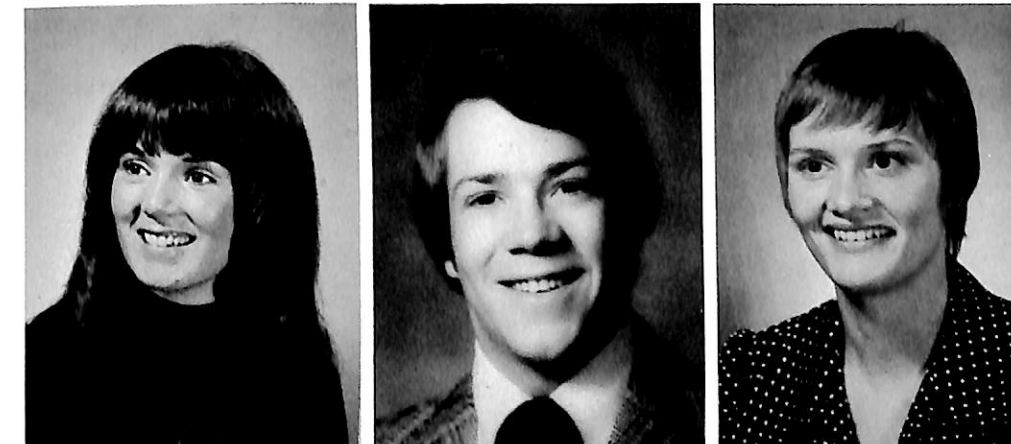
PETERSEN, JOHN M.  
Rochester, Minnesota  
Accounting  
PETERSEN, VICKI R.  
Alta, Iowa  
Social Work  
PIERCE, SANDRA JEAN  
St. Paul, Nebraska  
Business Administration



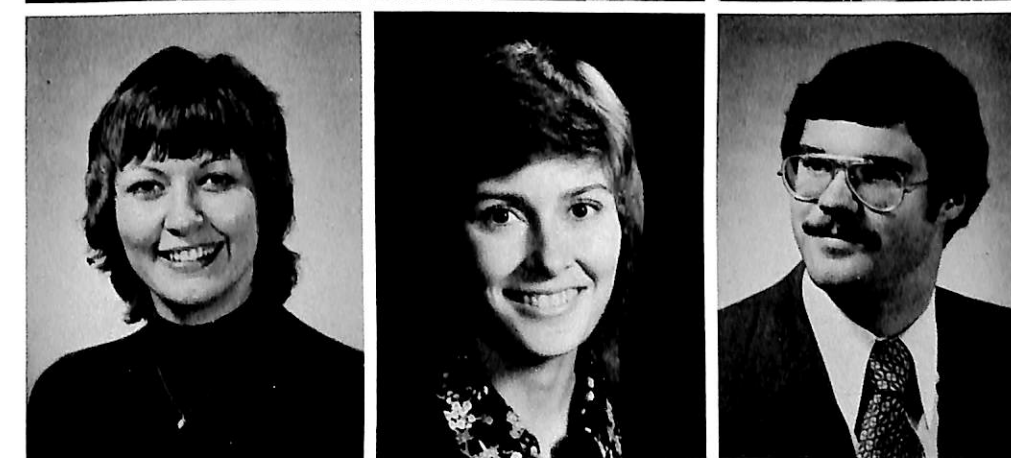
SAND, CINDIA  
Audubon, Iowa  
English, Speech/Theater  
SCHACHT, WALTER H.  
Neligh, Nebraska  
Environmental Studies  
SIETSEMA, KATHLEEN A.  
Tabor, Iowa  
Physical Education, Psych.



SOETMELK, GARY  
Woodbine, Iowa  
Accounting (Bus. Admin.)  
SONERAL, RUTH  
Ludington, Iowa  
Social Work  
SPEULDA, GARY R.  
Garden Grove, California  
Psychology



SPILE, SHAUNA BELLE  
Badger, South Dakota  
Art Education  
STICKROD, DAVID H.  
Wall Lake, Iowa  
English  
STUBBENDECK, WILLADEEN  
Unadilla, Nebraska  
Elementary Education



SUNDERMAN, DEBORAH LIN  
Treyvor, Iowa  
Elementary Education  
SCHWEER, PARTICIA  
Glenwood, Iowa  
Elementary Education  
TAFT, MARK A.  
Erie, Pennsylvania  
Economics

THOMPSON, KRISTIN  
Dunlap, Iowa  
Sociology, Psychology  
TJOMSLAND, JOHN A.  
St. Paul, Minnesota  
Religion (Humanities)  
VERTES, THOMAS EDWARD  
Syosset, New York  
Broadcast, Speech



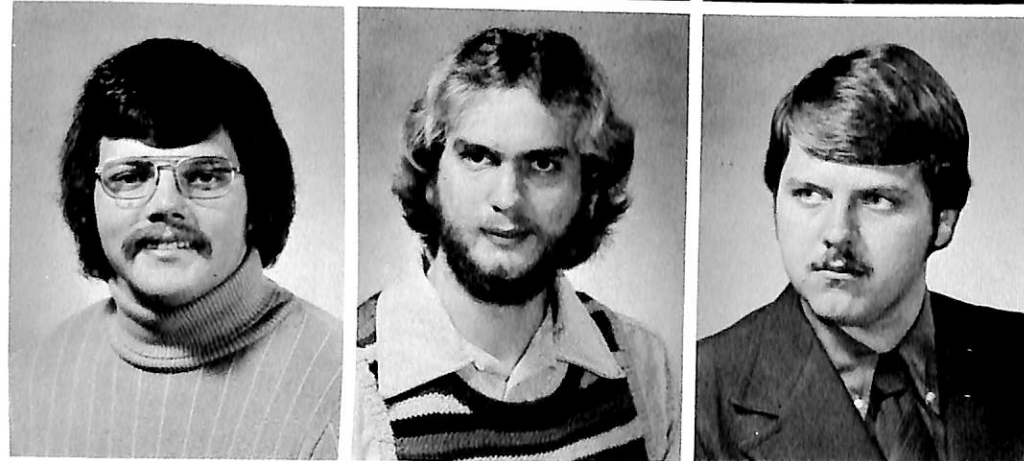
WAITE, RICHARD K.  
Woodbine, Iowa  
Biology  
WALSH, MARGARET ANNE  
Gretna, Nebraska  
Elementary Education  
WALSH, THERESA  
Gretna, Nebraska  
Speech



WALTH, SUSAN K.  
St. Paul, Nebraska  
Music, Speech/Theater  
WATT, LINDA S.  
Red Oak, Iowa  
Elementary Education  
WESTFAHL, KRISTI K.  
McCook, Nebraska  
Humanities



WILKE, GERALD  
Omaha, Nebraska  
Social Work  
WINTER, RONALD PAUL  
Hastings, Nebraska  
Social Work  
WULF, DWAIN EARL  
Blair, Nebraska  
Accounting



COMPLIMENTS:

UNITED OF OMAHA



'HAL' MANGEN



Farms - Commercial  
Residential - Rental

LARSEN REALTY

1641 Front St., Blair, Nebraska 68008

LeRoy "Rowdy" Larsen

Off. 402 426-4235  
Res. 402 426-4728

BLAIR FLOUR MILL  
Sorensen & Webster  
Feeds—Salt—Twine  
Mobile Milling



.Phone 426-3828

Blair, Nebr.



FORD CENTER, Inc.

"Service—Sales—Rentals"  
"Cars and Trucks"  
Phone 426-4126



MOBIL DISTRIBUTORS

Foley Oil Company, Inc.

GAS. OIL. ICE. DIESEL & FUEL OIL

JERRY FOLEY

PHONE 426-2525  
BLAIR, NEBRASKA 68008

HOLMQUIST GRAIN  
AND LUMBER COMPANY



1550 Nebraska St.

426-2662

AL'S ALIGNMENT SERVICE

ALFRED BECKMAN, owner

237 No. 17th Ave. Blair, Nebraska 68008



Wheel Alignment & Balancing  
Frame Straightening  
CARS and TRUCKS

Phone 426-4904

C & J TIRE SALES



Front End Alignment Tune-Ups  
Brakes - Shocks - Mufflers Installed

ON-THE-FARM TIRE SERVICE

CALL

426-4924

Charlie & Judy Brehm—Owners  
Both Dana Graduates—Class of 1967

1364 Washington

Blair

*Blair Bank*

F.D.I.C.



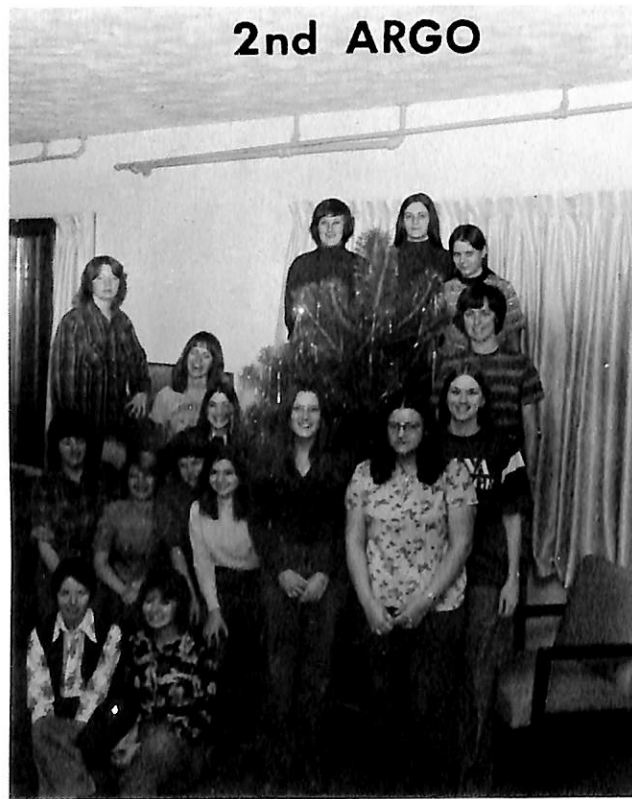
Compliments

KOLTERMAN'S  
BEN FRANKLIN

Blair  
Nebraska

advertisements

2nd ARGO



3rd ARGO



4th BLAIR



**LARSEN and JIPP CO.**

complete Building Service  
Real Estate Sales

Office  
426-3765

Ed Jipp  
426-4265

Phil Larsen  
426-2580



IBT



25

COMPANY

THE PEOPLES SHOP  
Mens & Boy's  
Work & Leisure Wear

PEOPLES MIZ SHOP  
Womens Junior & Miss's Wear

Master Charge                      Bank Americard  
Layaway

**BLAIR CLOTHING COMPANY**

Young Men's Clothing  
Levi's  
Farah

Van Heusen Dress  
and Sport Shirts

**BLAIR VISION CLINIC**

Dr. Keith E. Finn—Optometrist

Eye Examinations—Eye Wear  
Contact Lenses

228 N. 19th                      426-2119

*Bohs Oil Company*



On U.S. 30 At South Edge of Blair, Nebraska  
Telephone 402-426-3535

**BETTE'S  
JEWELERS & GOLDSMITHS**

Dana's Jewelry Headquarters

1620 Washington                      Blair

Insurance and Real Estate  
of all Kinds

**HANSON AGENCY, INC.**

Ray Hanson                      Phone 426-2167  
Bernard Kros                      Washington St.  
Brent Gilbert                      Blair, Neb.

**Hinky Dinky**

Open Seven Days Per Week

9th and Washington  
Blair, Neb.

**ALFRED O. SICK  
REALTOR**

Huber Bldg

Everything in Real Estate



"A SYMBOL OF QUALITY"

1680 Front St.  
426-333

*Christensen  
Lumber  
and Supply Co.*

**Korshoj Construction Co., Inc.**

CONTRACTORS - BUILDERS - ENGINEERS

TELEPHONE 426-2146  
AREA CODE 402

  
1545 WASHINGTON STREET  
BLAIR, NEBRASKA 68008



Builders of Educational, Commercial, Industrial, and Public Buildings Throughout the Middlewest



McDonald's

"Blair's Department Store"



VALHALLA

ANADS

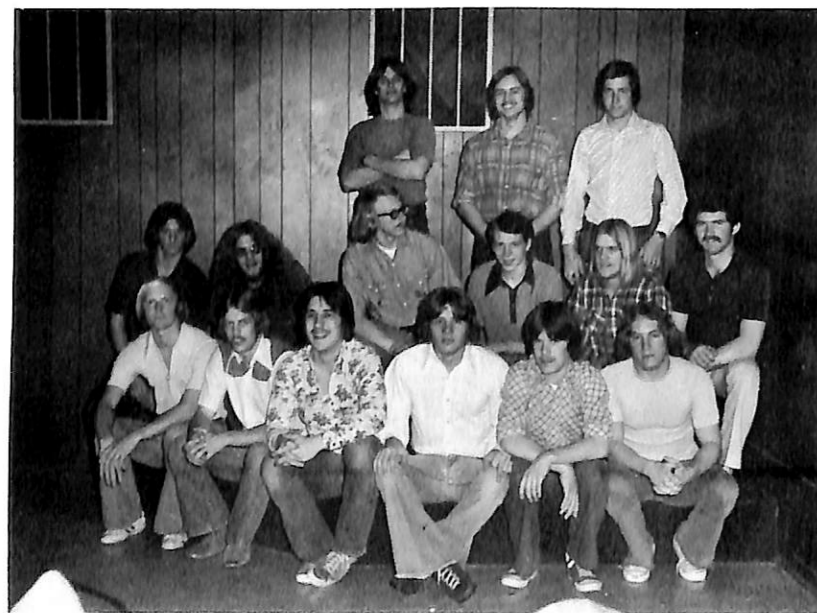
PUNKS



M and M's

4th ARGO

MIGHTY MIKES



**BLAIR LAUNDRY – ADVANCE CLEANERS**

2142 Nebraska  
Phone 426-3645

Pickup  
and  
Delivery

1749 Washington  
Phone 426-4040

Kay and Don Frahm  
We Clean With Care The Clothes You Wear

*Engineered* FARM EQUIPMENT



KELLY P. RYAN, PRESIDENT  
PHONE 426-2151 BLAIR, NEBRASKA



COMPLIMENTS

**WASHINGTON COUNTY BANK**

BLAIR, NEBRASKA



MEMBER FDIC

"2 LOCATIONS TO SERVE YOU"

**BLAIR FEED MILL**

NUTRENA FEED  
FEED FOR EVERY NEED  
Fertilizer  
Livestock Equipment  
Farm Chemicals  
SEEDS



*Equitable Federal*  
SAVINGS AND LOAN ASSOCIATION  
FREMONT BLAIR WEST POINT  
SOUTH SIOUX CITY



ANDERSON  
PHARMACY

1651 Washington  
Phone 426-2187



THE GAS ENERGY DIVISION OF  
CENTRAL TELEPHONE AND UTILITIES

LIVE MODERN FOR LESS  
WITH CONVENIENT GAS APPLIANCES

CLEAN ENERGY NATURAL GAS FOR:

COOKING	AIR CONDITIONING
HEATING	CLOTHES DRYING
GRILLING	INCINERATION
WATER HEATING	

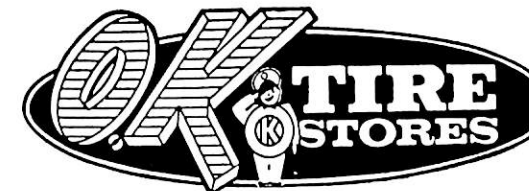
1641 WASHINGTON

CALL 426-3121

BLAIR MEDICAL  
GROUP

Clinic Building

**LONG'S**



19th & Washington  
426-3636

COMPLIMENTS OF:

BLAIR CARPETS & DRAPERIES  
BYFORD, J. KLEIN O.D.  
DARLO'S  
GAMBLES STORE  
B-LINE MOTEL  
H. A. RABBASS  
DRS. SIMMONS & ABBOTT D.D.S.



**AMERICAN FAMILY  
INSURANCE**  
AUTO HOME HEALTH LIFE

**GARY M BAKER**

129 South 16th st.  
Blair, Nebraska 68008  
Office: 426-4860



**MEDICINE CHEST**

Discount Center

1728 Washington

Phone 426-3805

**DUCKS**

**MOONERS**

**PRIMATES**



**SAINTS LTD.**

**RAIDERS**

**DYAKS**



# Blair

CHAMBER OF  
COMMERCE



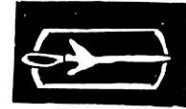
**G**REAT **P**LACE **T**O **L**IVE  
**W**ORK AND **P**LAY

## VINTON'S

Chevrolet



Pontiac



Oldsmobile

Downtown Blair  
Over 44 years of  
Fair Dealing

Phone 426-4121

## E. T. THOMPSON STANDARD OIL



19th & South, Blair 426-4139  
You expect more from Standard—  
and you get it!

## PLUM TREE LOUNGE



Owners: Don Conrad & Bill Schumacher  
HWY 30 S BLAIR

*Fiesta Grande*

**RESTAURANT  
& COCKTAIL LOUNGE**

137 North 17th  
Blair, Nebraska  
Phone  
426-2343



## KLOPP JEWELRY

Gifts for All Occasions  
Orange Blossom and  
Keepsake Diamonds  
Watches—China—Silver  
Crystal—Danish Giftwares  
and Christmas Plates

Free Gift and Mail Wrapping

## JENSEN WELL CO., INC.



(402) 426-2585

Blair

## BUD JENSEN SKELLY SERVICE



at the corner of  
19th and Washington  
Blair, Nebraska  
Phone 426-3303



TAYLOR OIL CO., INC.

champlin

3 Locations in Blair  
Full Tunnel Car Wash  
Blair, Nebraska



Jack Varley

BLAIR DAIRY

Phone 426-2641

SHUSTER IMP. INC.

Sales Service Parts  
Full Service Depts.

Harvey Shuster, Mgr.

Blair  
Neb.

"HAROLDS DISCOUNT LIQUORS"

No Free Samples!

We Check I.D.!

No Credit Given!

We Will Not Buy

Your Home-Made Brew

But we do have 347 VARIETIES OF FINE  
WINES and a big selection of oddball BEERS  
along with all the regular BOOZE — and it's all  
DISCOUNT PRICED!

SCHEFFLER'S SPORTING GOODS

Blair, Nebraska

Phone 426-2760

WASHINGTON  
COUNTY  
MOTORS

Chrysler Dodge Plymouth

Wrecker Service

426-2332

Don Feer

THOMPSON AGENCY

Insurance and Real Estate

"Complete Insurance"  
Service

.Renters

.Health

.Auto

.Life

Phone 426-4707

Blair, Nebr.



HAYES ELECTRIC

215 South 10th Street

Refrigeration and Air Conditioning  
Electric Motor Repair

PHONE 426-3540

BLAIR, NEBRASKA 68008

MILLER-ROLLAND  
YOUR



DEALER IN BLAIR

1526 Washington St.

Phone 426-3777

DRS. THONE & PEMBERTON  
& HOLSTEIN  
Veterinarians

Blair, Nebraska  
Phone 426-3630

Fine Foods at

STEWARTS  
MARKET

Open Evenings and Sundays  
For Your Convenience

CON-E-CO  
CONCRETE EQUIPMENT CO.

Blair, Nebr.

Enterprise Publishing

BLAIR, NEBRASKA  
68008

The Enterprise  
The Pilot Tribune  
The Arlinton Citizen  
Fort Calhoun Chronicle



BLAIR HOUSE MOTEL

Blair, Nebraska

1 1/2 Miles South At Jct. Of Hiways 133 & 30

Playground - Picnic Area

Courtesy Coffee - Color TV

New 24 Hour Restaurant Nearby

Cocktail Lounge

Mae & Rich Ondracek

For Reservations

Owners & Managers

Phone:

Direct Dial Phone

402-426-4801

CARLSON'S MEATS  
AND LOCKERS

"Here to Serve You and  
The Community."

312 N. 16th

426-3300

SALON DE BELLZA

Cutting  
Styling

Permanent Waves  
Wig Sales & Care  
Also Mens Styling  
426-4333

Bleaching  
Tinting

Virginia Frank—Owner

1829 Washington

Blair, Nebraska



# COAST TO COAST STORES

Warren Rounds  
Owner

Locally Owned—  
Nationally Organized—

# STATE FARM INSURANCE



**Robert (Bob) Krogh, Agent**

Phone 426-2320

## *Blair Florists and Greenhouses*

"growing with Blair"

FLOWERS FOR ALL OCCASIONS

1711 Wash. P. O. Box 388 Tel. 426-3737  
BLAIR, NEBRASKA 68008



## HUSKER BOWL



Newest Model AMF Pinsetters  
Serving your Favorite Cocktails  
New Longer Hours  
For Available Lanes  
Call 426-2600



RELIABLE PRESCRIPTION SERVICE

## *Blair West Pharmacy*

Phone 426-3700 BLAIR, NEBRASKA

Dick Charleston R.P.  
Frank Elstun R.P.  
1844 Washington

For Your Lumber Needs

**BLAIR LUMBER CO.**

Retail . . .  
Building Materials  
Paint and Glass  
Hardware



Serving Dana & Blair for 90 years  
Happy to Serve You

106 N. 16th  
Blair, Nebraska 68008  
426-2450

**Firestone**



**CONOCO**

**NEBRASKA-IOWA SUPPLY CO., INC.**

WHOLESALE DISTRIBUTORS

1143 LINCOLN STREET BLAIR, NEBRASKA 68008

PHONE 402-426-2171

**Kermit Andrews**  
PRESIDENT & GENERAL MANAGER