



*DANIAN 1982
DANA COLLEGE
BLAIR, NEBRASKA*

Contents

Activities: 8



Portraits: 26



Organizations: 60

Sports: 76



Advertisements: 92

While yet our land was wilderness



And sturdy pilgrim reared



*With brawny arm
His lowly home,*

A flower divine appeared:

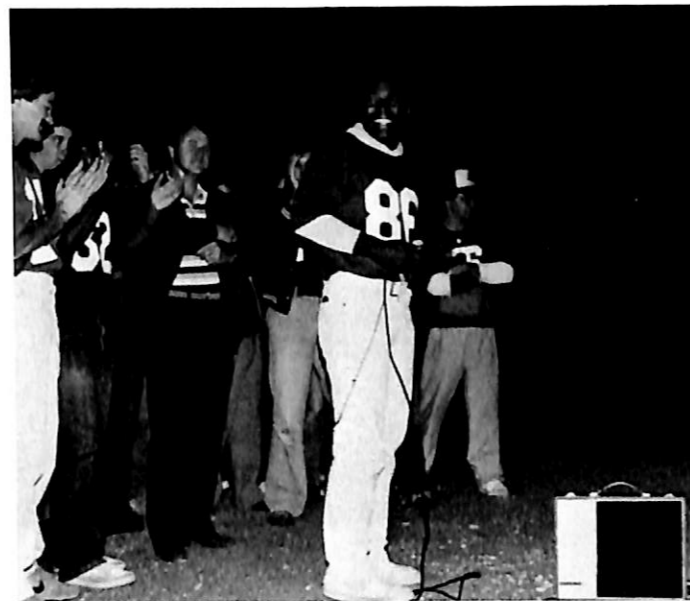




*O hail, Fair Dana, hail to thee
 thee
 Our song to thee we
 sing
 may we always thy
 name revere*



*While truth to us be
 dear.*



*Thy message true
 impart*



*To manhood mold each
 heart.*

*To all who would
 Thy truths embrace*



*Be thou their
 guiding light
 throughout*



O hail, Fair Dana, hail to thee!

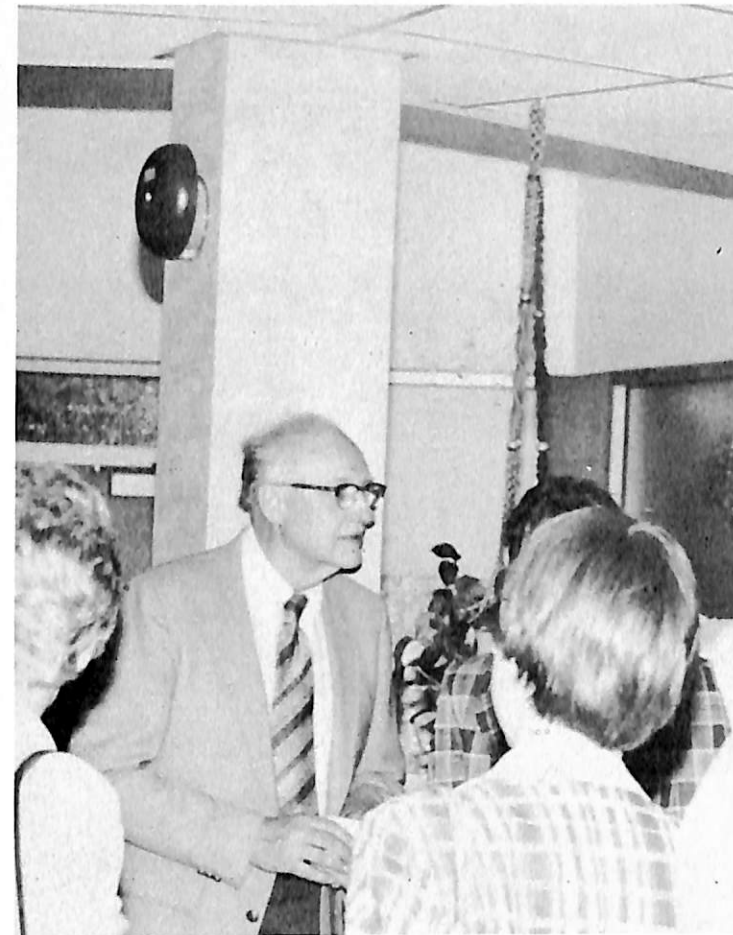


Thy children guide aright;



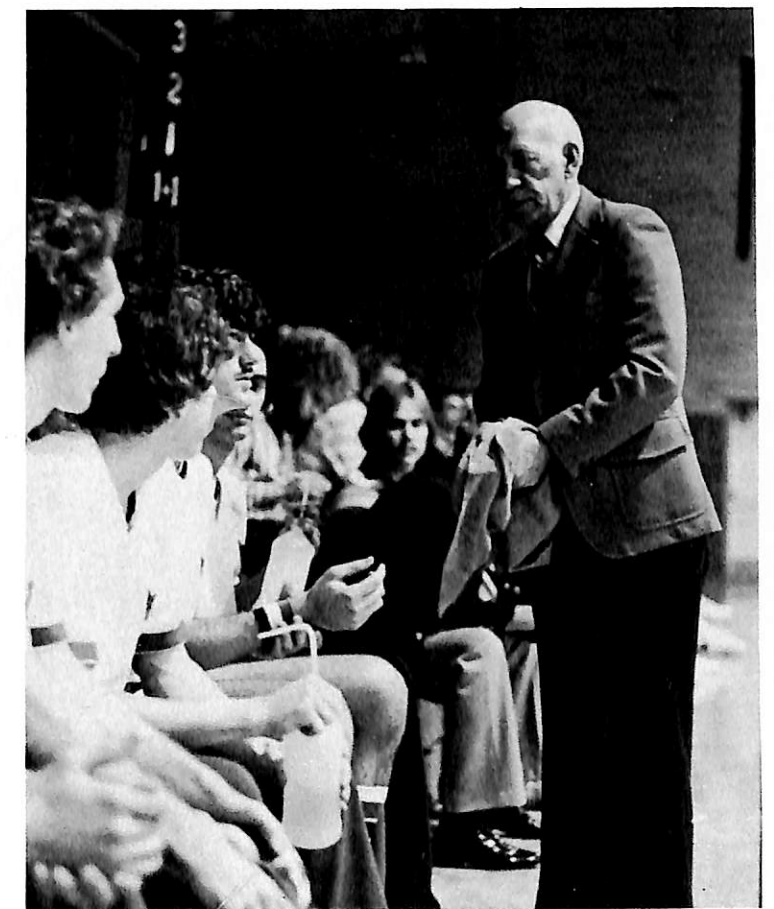
May they in faith and hope and love

Praise Him who dwells above.



The 1982 Danian is dedicated to

Frank Hengeveld and Paul Peterson for their dedication to their work, to Dana and the Dana community over their long years of faithful service to a truly liberal and Christian education. Their effort is appreciated, though too little recognized in the bustle of everyday education.



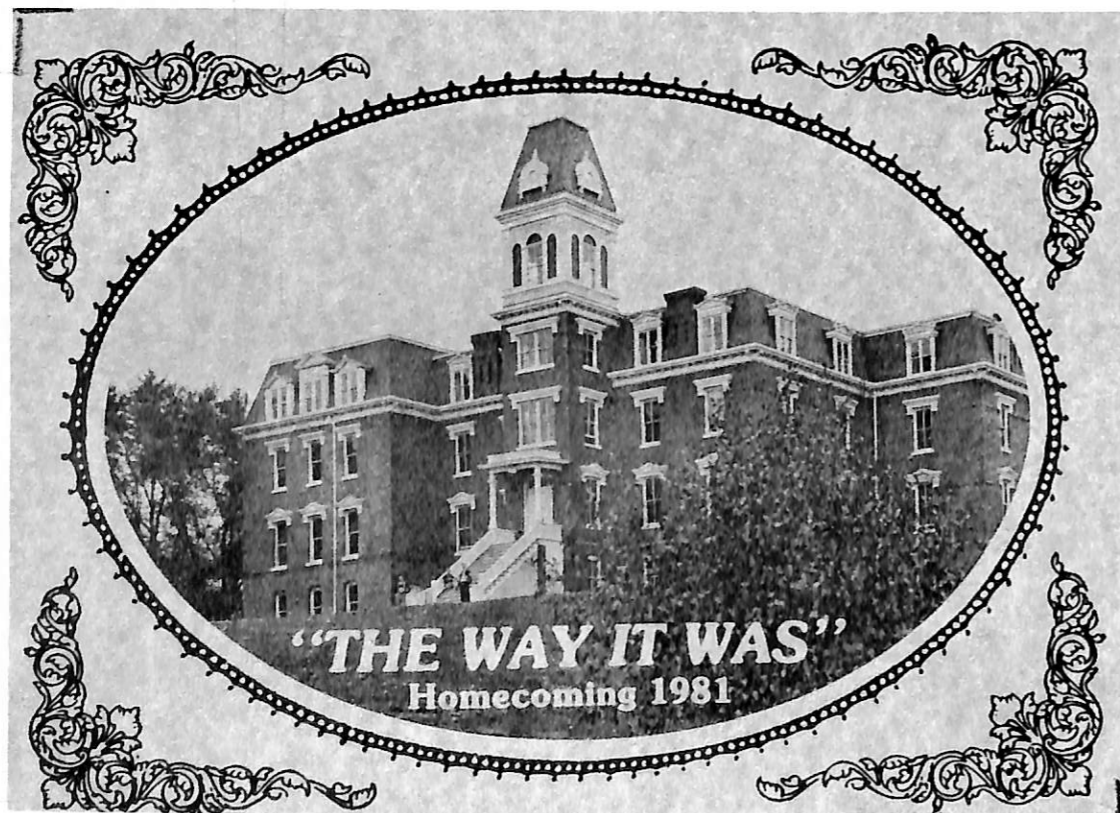


EVENTS



Members of the Homecoming Court were (from left): C. Schaffer, L. Miller, T. Barber, P. Coonce, P. Kenealy, S. Pash, P. Meeker, A. Nichols, S. Rasmussen and C. Dutch. Right: Amy Nichols and Pat Kenealy reigned as Homecoming Queen and King.

Homecoming 1981 centered around the theme of "The Way it Was," bringing back memories of Dana as it has grown and changed since its founding 98 years ago. Highlighted events Friday night were the Student-Alumni Vaudeville Show, the Pep Rally and Bonfire and Hayrides. Saturday's activities began with the traditional Aebleskiver Breakfast, the "Dana Run for Fun," the Homecoming Parade, and exhibition by the Dana Folk Dancers and the Class Reunions. Dana's football game against Hasting's College was followed by the coronation of the 1981 Homecoming Queen, Amy Nichols.





Sights And Sounds Of Christmas



Another Starry Night

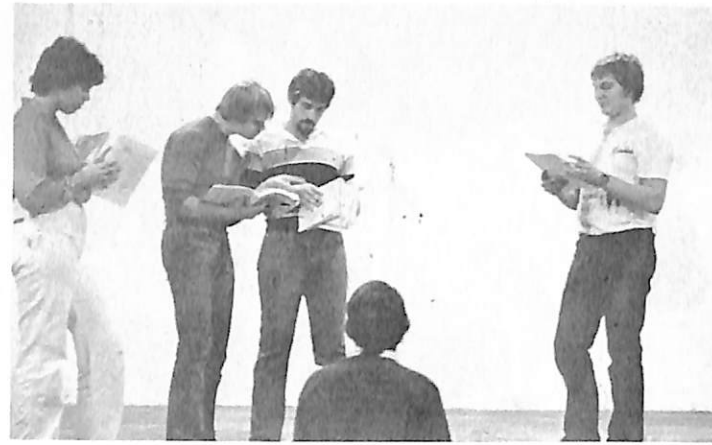
What Kind of a Savior? by W. A. Poovey
 Caleb Dave Farr
 Sarden Jeff DeYoung
 Mitah Karen Lea Gosser
 Olas Philip Fredrick
 Velda Holly Townsend
 Scene: A Judean hillside a year after the first Christmas.

First Night by James Stuckey
 Mary Linda Lemon
 John Scott Doksansky
 Magdalene Nadine Sorensen
 Azarias Mike Hennick
 Joseph Mark Dickinson
 Keziah Cristie Olson
 Aphia Laura Gregory
 Scene: A room in Jerusalem on Good Friday evening.

Production Credits

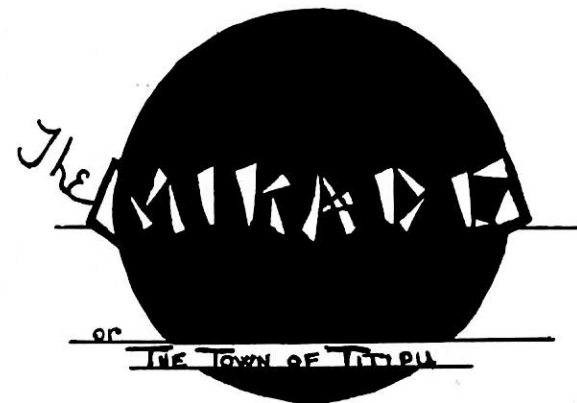
Director Sieghard E. Krueger
 Production Assistant Chizuru Komatsu
 Costumes Peggy Sorensen
 Lights Brian Barratt
 Stage Manager Rick Knutson
 Program Design Pam Brummer
 Banner Design and Construction Pam Brummer
 Lullaby Composer Iris Frey





DNR PLAYERS

present
GILBERT & SULLIVAN'S



NOVEMBER 5, 6, 7

1981



Director Sieghard E. Krueger
 Conductor Dr. Thomas Williams
 Choreographer Cheryl Harris Fleming
 Vocal Coach Sandra Polhemus
 Design and Technical Director Timothy J. Nietfeld *
 Production Assistant Connie J. Frahm * +
 Stage Manager Connie J. Frahm
 House Manager Jennifer J. Jensen *
 Rehearsal Accompanist Kathy Gerking
 Wardrobe Mistress Peggy Dutch *
 Publicity Connie Frahm, Jennifer Jensen
 Properties Peggy Dutch

CREWS

Lights
 Craig Shaffer *
 Karl Hermanson +
 Steve Appel +
 Timothy J. Nietfeld
 Bradley Carter +

Makeup
 Peggy Dutch
 Laurie Hendrix
 Connie Frahm
 Rick Knutson *

Set
 Karl Hermanson
 Jerry Christensen *
 Brian Barratt
 Nadine Sorensen
 Chizura Komatsu
 Kristi Swensen
 Michael Von Hollen
 Lawrence R. Lazzaro *
 Connie Frahm

Publicity
 Connie Frahm
 Jennifer J. Jensen
 Ellen Wilderson

* Alpha Psi Omega, national dramatics society



Fall Play



ORCHESTRA

Conductor Dr. Thomas Williams

Flutes
 Beth Anderson
 Jan Evenson

Clarinets
 Cindy Nelsen
 Jodie Barrett

Bassoon
 Lori Neve

Alto Saxophone
 Anita Dettmer

Keyboard
 Kathy Gerking

French Horns
 Kari Jo Molzer
 Tera Nohrenberg
 Shellie Nelson
 Sharon Stromberger

Trumpets
 Devon Speck
 Tim Koca
 Howard Speck

Trombone
 Dan Auxter

Bass
 Julie Nelson

Cast

The Mikado of Japan Monty Lee Scheele

Nanki-Poo Bob Schmoll *
 (Son of the Mikado, disguised as a wandering minstrel, and in love with Yum-Yum)

Ko-Ko Jerome L. Christensen *
 Lord High Executioner of Titipu)

Pooh-Bah Steve Appel
 (Lord High Everything Else)

Pish-Tush Peter C. Jacobson
 (A Noble Lord)

Three Sisters - Wards of Ko-Ko

Yum-Yum Julie Ann Wood
 Pitti-Sing Nadine Sorensen
 Peep-Bo Diane Heistand

Katisha Jean King
 (An elderly lady, in love with Nanki-Poo)

CHORUS OF SCHOOL GIRLS, NOBLES, GUARDS, AND COOLIES

Randy S. Bulow Sarah Schwartz
 Michael Von Hollen Lynae Moline
 Derek Neeman Kristi Swensen
 Lawrence R. Lazzaro * Stephanie Wiemar
 Mark Dickinson Sonja Hansen
 Andy Johnson Julie Frisk +
 Mark Juergens Barbara Nelson
 Chizura Komatsu Kelley Messing

* Member of Alpha Psi Omega, national dramatics society

Dana College Student Activities Board
cordially invites you to attend the

1981 Winterfest Ball
at the Blair Fire Hall
16th & Lincoln Streets
Friday, December 11th
from 10:00 p.m. to 1:00 a.m.

featuring the band
"Mischief"

Coronation of Royalty
Refreshments served
Semi-formal attire

Winterfest

Members of the Winterfest 1981 Court were (from left): J. Christensen, J. Evenson, T. Knutson, K. Gerking, S. Appel, P. Counce, A. Johnson, J. Schlange, B. Schmoll and L. Miller. Steve Appel and Peg Counce reigned as Winterfest King and Queen.



Liz Miller and Craig Schaffer reigned over the Mayfest Ball in 1982. Members of their Court included: M. Friis-Hansen, S. Rasmussen, J. Kimm, S. Grorud, C. Kennedy, L. Broeker, J. Jensen and D. Johns.

Dana College Student Activities Board

cordially invites you to attend the

1982 Mayfest Ball
in the Campus Center
Saturday, May 8th
from 8:00 to 11:00 p.m.

featuring the band
"Mainstreet"

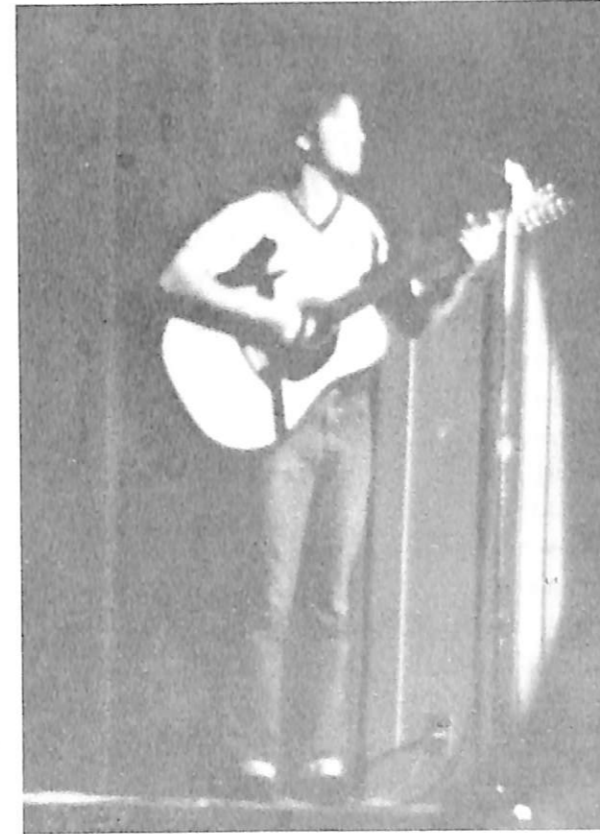
Coronation of Royalty
Refreshments served
Semi-formal attire

Mayfest

Faculty Follies



The Faculty, Staff and Administration reluctantly presented Faculty Follies-1982 in the Not-So-Fine Arts Building, alias A.M.A.A. production which only crosses the Dana stage once every four years, Faculty Follies is planned, plotted and executed with last-minute timing. Photos on this page recall such memorable acts as the "Baby Doll Revue," the "Grand March" of the "Le Grand Finale," we can't remember which, and the "Spare Tire Light Opera Company." Other acts which kept the audience rolling in the aisles and the players in stitches were: Genesis of a College Faculty (Dr. R. Weckmeuller), "Tonight's the Night" "Show, Senator Glochenspiel, Skaelme Gallery (A Gallery of Rouges), A Touch of Class: Opera by Rossini, The Visiting Theologian: Father Guido Sarducci (Mr. J.M. Nielsen), The Great Voice, Samuri Librarian, The Dana Experience Isn't Pretty, Fun with Hamlet and Dana's Other Danish Dancers.



Senior Talent? Night

As seniors, the class of 1982 took it upon itself to meet the challenge of bestowing on the Dana campus its display of ingenuity at Senior Talent Night 1982. The only true talents presented during the evening were the musical interludes of Devon Speck and Gary Reed. The audience learned that promising careers follow college educations: janitors, street-curb painters, glow-in-the-dark secretarial positions with Ft. Calhoun Nuclear Power Plant and even plights as educators wait each graduate. From the Great White North came information on the liquid metric system — or how to get more beer for the buck. Many items about the Senior Talent Show



will simply have to be put to memory since they can never be allowed to appear in print. But not to be forgotten are Scott Gorud's rhinoceri or Suzanne Lazzaro's 'BURRITOS!!'

Chamber Music

By Arthur Kopit

CHAMBER MUSIC by Arthur Kopit was directed by L. Lazzaro. The cast included: L. Fletcher, as the Woman Who Plays Records; L. Lemon, as the Woman in the Safari Outfit; S. Lazzaro, as the Woman with Notebook; C. Frahm, as the Girl in the Gossamer Dress; K. Swenson, as the Woman in Avitrix's Outfit; C. Chesser, as the Woman in Queenly Spanish Garb; K. Klover, as the Woman in Armor; C. Komatsu, as the Woman with Gavel; J. Frisk, as the Woman in White; and A. Labs, as the Assistant. The show was produced by L. Lazzaro, C. Chesser, L. Fletcher, J. Jensen, C. Komatsu, R. Knutson, S. Lazzaro, and K. Swensen. CHAMBER MUSIC was performed Wednesday night.

The One Acts for 1982 were performed Wednesday, Thursday, Friday and Saturday evenings, April 28-31. The One Acts serve the purpose of giving student directors the experience of producing their own show, from choosing a play to opening night. Wednesday's One Acts included the Shakespeare plays: AS YOU LIKE IT, MIDSUMMER NIGHTS DREAM, and HAMLET, all three plays were directed by Dr. J. Bienz, B. Boltinghouse, C. Hutton, R. Kaiser, R. Knutson, T. Nohrenberg, and B. Tuthill were the participating members of the class, while P. Sibole appeared as the Wrestler in AS YOU LIKE IT.

THE SHOEMAKER AND THE DEVIL by Norman Ginsbury is based on a short story by Anton Checkhov. The play was directed by Karla Schutt and included: S. Dolsansky, P. Fredrick, M. Jensen, A. Labs, C. Olson, T. Quale, and P. Reed. THE RESOUNDING TINKLE was written by N. F. Simpson and was directed by C. Frahm. The play featured S. Carrier, L. Lemon, T. Quale, and K. Swensen. THE MORE THE MERRIER by Stanley Kaufman and directed by L. Lemon also included: E. Benjamin, S. Doksansky, L. Fletcher, and P. Fredrick. These three plays were all performed Thursday evening.

Friday's performances were: THE LOVERS, which was directed by R. Knutson and played by S. Carrier, L. Hendrix, and B. Barratt; STUDY NO. 1 under the direction of C. Komatsu, included: S. Appel, C. Frahm, and T. Quale; NOT ENOUGH ROPE, directed by M. von Hollen featured B. Ellis, M. Juergens, and D. Einspahr.

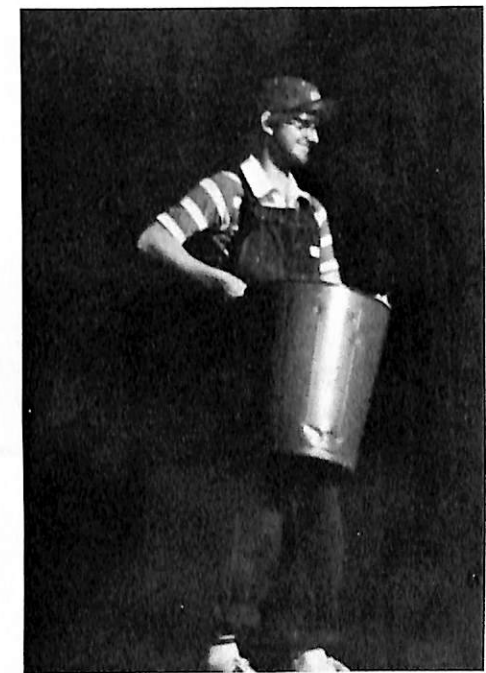
One Act Plays

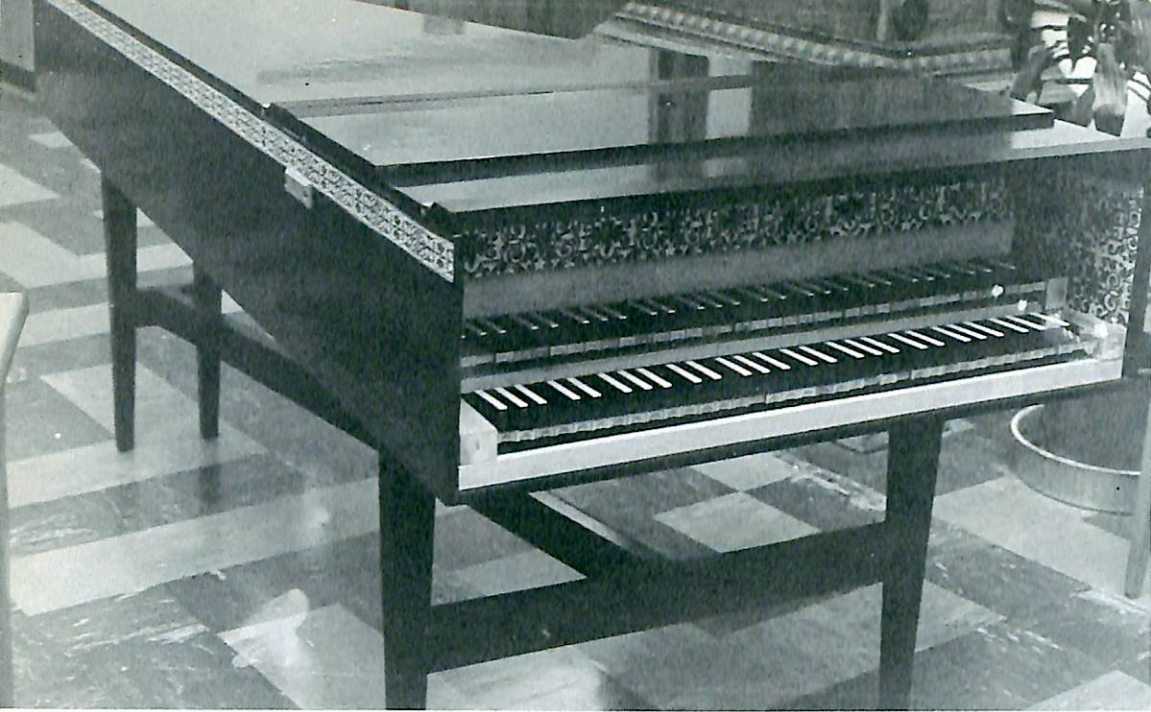
Impromptu

American Scenario

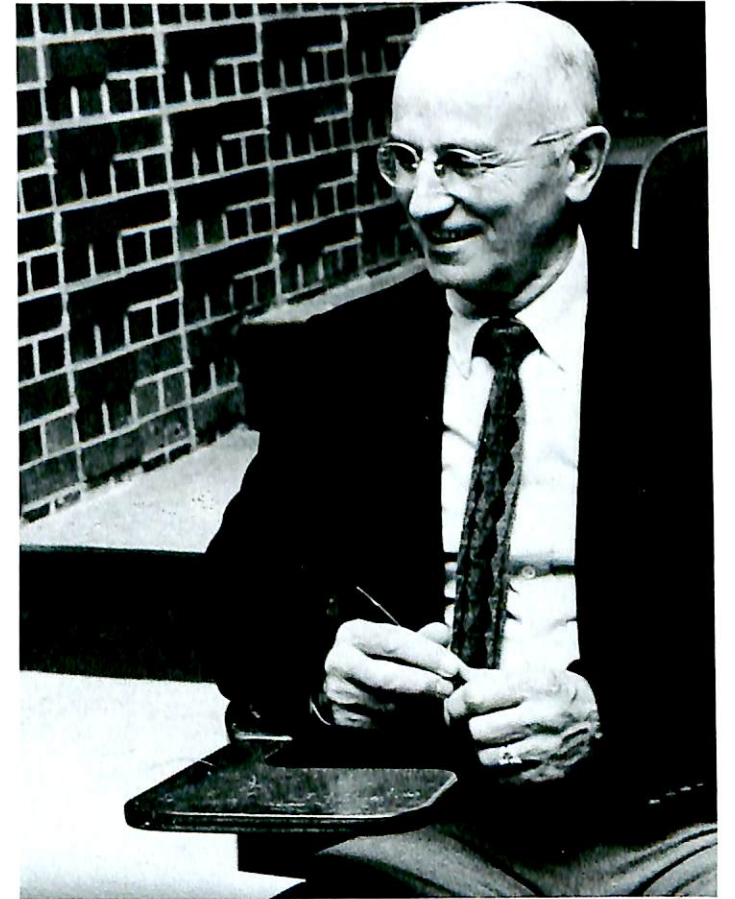
IMPROMPTU by Tad Mosel starred L. Lemon, B. Carter, L. Hendrix, and L. Lazzaro. It was directed by J. Jensen. The production staff for the show included: B. Carter, P. Fredrick, L. Hendrix, T. Hanlon, J. Jensen, F. Krammer, A. Labs, L. Lazzaro, S. Lazzaro, L. Lemon, R. Mingus, C. Schaffer, and J. Yusten.

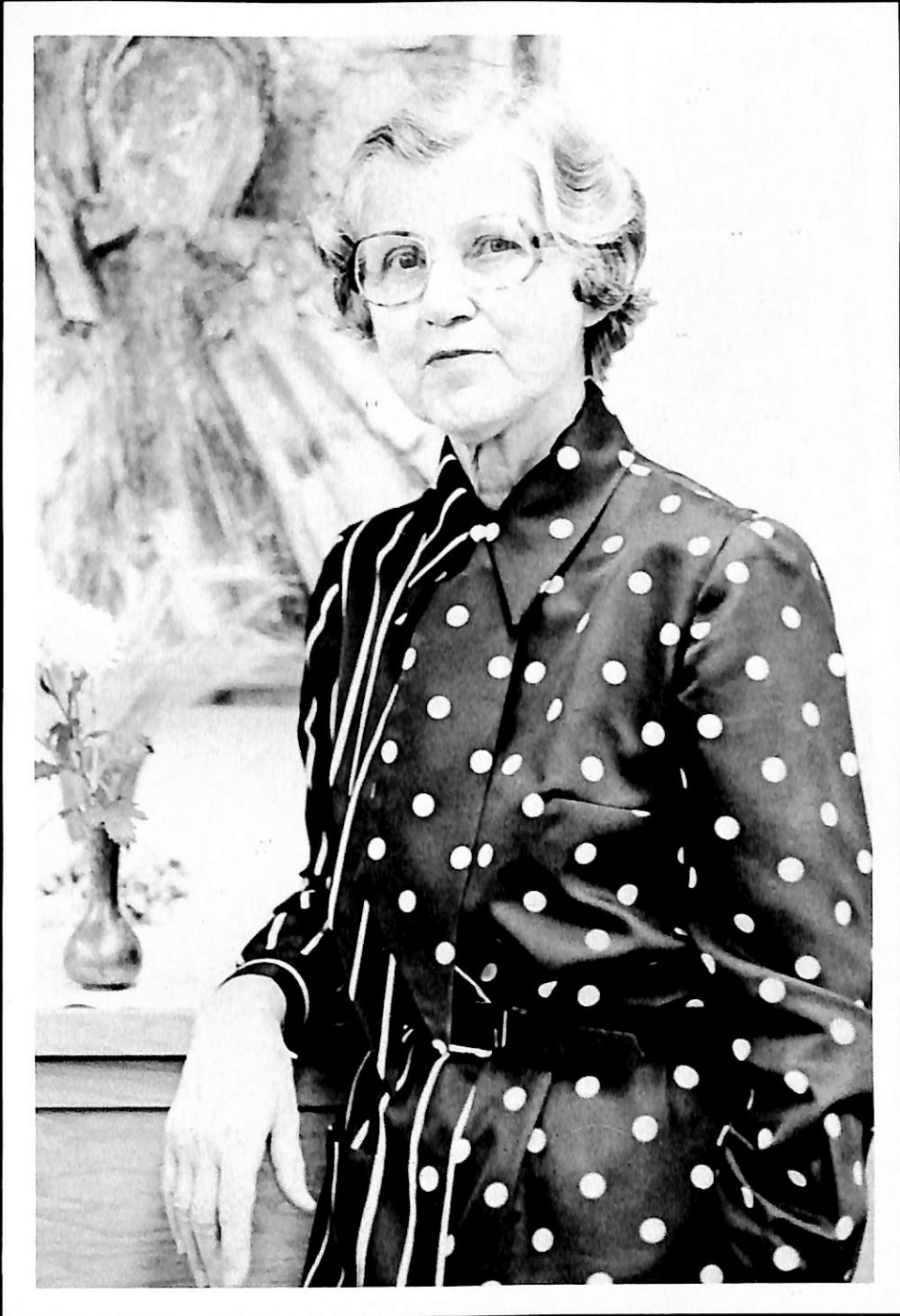
AMERICAN SCENARIO was an original play written and directed by B. Barratt. Appearing in the play were K. Barratt, K. Brue, and S. Spurgeon. A. Labs, G. Reed, C. Schaffer, and S. Stokley were involved in its production.



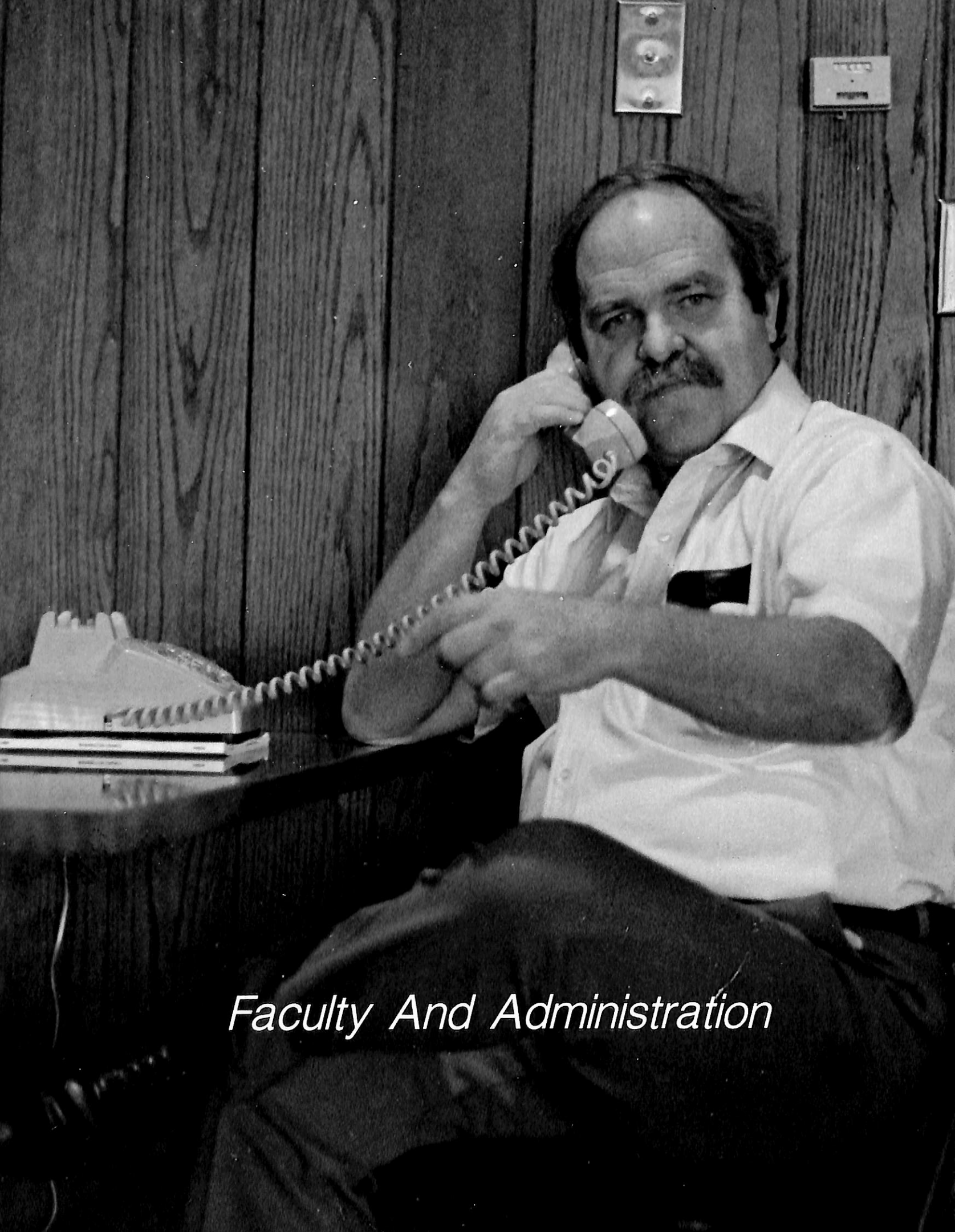


*Other Events
On Campus*





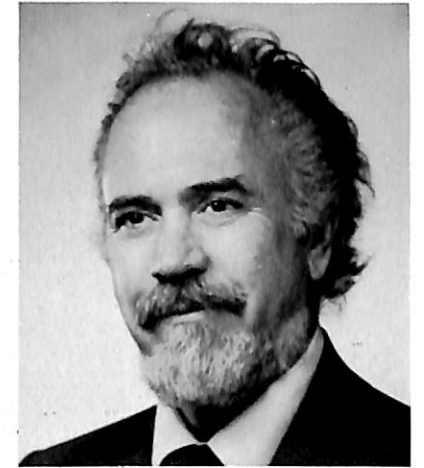
FACES



Faculty And Administration



Blair, Nebraska 68008
Telephone 402 426-4101
Office of the President



James G. Kallas
President

Open Letter to Our Students

Young Friends in Christ, Greetings!

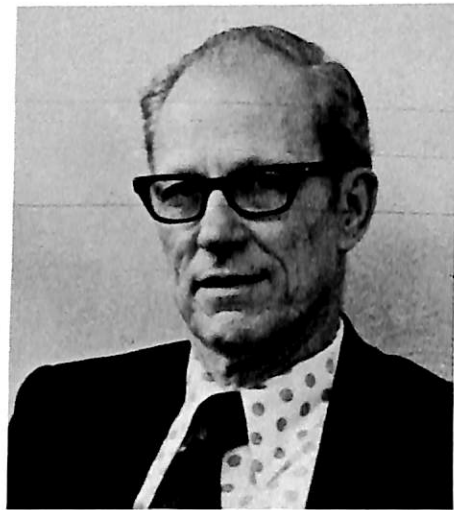
What does Dana want for you? The answer is found in our title--
a college of the church.

First of all, we are a college. We are an academic institution with high educational standards. We want for our students to have a fine, even an outstanding, education, second to none they would get elsewhere. We want for you to probe the planets, to examine the sonnets, to mold clay and master math. There is no academic endeavor which is closed unto us, forbidden terrain into which the mind cannot wander. All of those questions which have intrigued the interest of humankind from the beginning are ours to explore and to master. What do we want for our Dana students? An education, a mastery of all the data and dates, an awareness of all the hypotheses, a proficiency in all of the technology which marks our modern world. We want for our students, when they leave this place, to walk forward into a competitive, scientifically orientated, technological 20th century able to cope and compete and prevail! We are a college, and we want for our young people to be truly well educated.

But we are also a college of the church. That means that we are not content with objective fact alone. We are not educated merely because we have absorbed the intricacies of calculus and comprehended the meaning of iambic pentameter. Behind this maze of fact there must be meaning, it must be cohesive. There must be an integrating principle, and the church believes that the anchor of all reality is our living Lord and Saviour Jesus Christ. Scientists and philosophers can ask the questions, "from whence the world?" and "what is man?" But only the church can answer those questions, indicating that we are sons and daughters of a Lord who cares. What do we want for our students? A meaningful, vibrant, vital tie with the Lord of the Church, Jesus Himself.

These two things, young friends. First, an education second to none. And, secondly, a faith ready to spill itself out in sacrificial service. May Jesus bless all of our efforts unto these ends.

James Kallas
Dr. James Kallas
President



Clifford Hanson
Dean of the College



Dave Martin
Dean of Students



Eugene Meyer
Director of College Relations

Administration



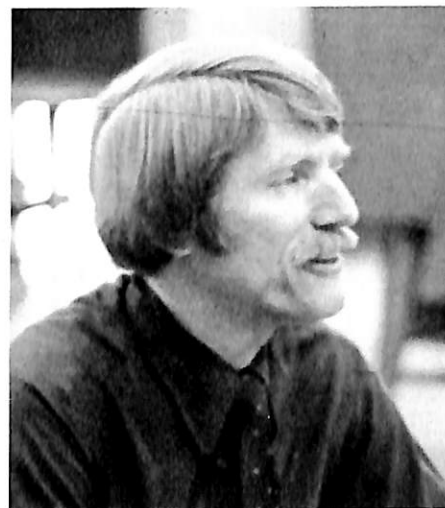
Keith Hansen
Business Manager



Ron D. Johnson
Head Librarian



Verlan Hanson
Registrar



Bruce Bergquist
Campus Pastor



Phil Pagel
Director of Public Relations

Faculty



Norman Bansen
Professor of English and Danish



John Bienz
Assistant Professor of English



John Mark Nielsen
Instructor of English



Luella Nielsen
Associate Professor of English

English



Milt Heinrich
Instructor of Art



Jim Olsen
Assistant Professor of Art

Art



Sieghard Krueger
Assistant Professor of Speech

Darrell Dibben
Assistant Professor of Speech

Speech Theatre



Alan Brandes
Associate Professor of Music



Paul Neve
Professor of Music



Sandra Polemus
Instructor of Voice



Tom Williams
Associate Professor of Music

Music

Foreign Language



Bodil Johnson
Instructor of Danish and German



Edige Konik
Instructor of French



Carol Haussermann
Assistant Professor of Phys. Ed.



Ron C. Johnson
Instructor of Phys. Ed.



Dale Lemon
Assistant Professor of Phys. Ed.



Paul Peterson
Professor of Phys. Ed.

P.E.

Religion



Delvin Hutton
Professor of Greek and Religion



John W. Nielsen
Professor of Religion

Education



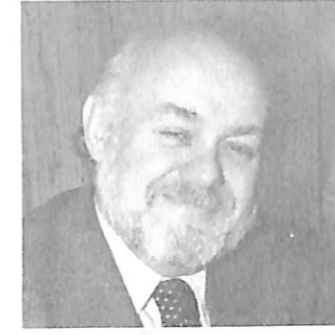
Bernard Matthies
Professor of Psychology



Shirley McAllister
Assistant Professor of Ed., Psych.



Dorothy Olson
Professor of Elementary Ed.



Ray Weckmuller
Professor of Education



Don Baack
Instructor of Business Ad.



Paul Baumgarten
Instructor of Business



Eugene Pibal
Assistant Professor of Business



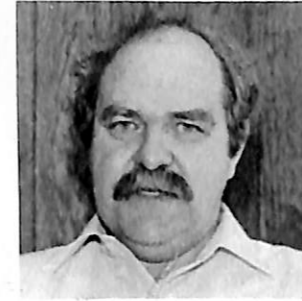
Gil Ragan
Associate Professor of Economics

Business Administration

History



Richard Jorgensen
Associate Professor of History



Don Warman
Assistant Professor of History



George Grube
Associate Professor of Biology



Frank Hengeveld
Associate Professor of Chemistry



Eugene Linblad
Associate Professor of Chemistry



Roger Olson
Associate Professor of Math



Nancy Beaman
Campus Bookstore



Ruth Rasmussen
Assistant Librarian

Sociology And Social Work



Rodney Dannehl
Assistant Professor of Sociology



Jan Funk
Instructor of Social Work



Arvin Hernes
Associate Professor of Physics

Science



Larrie Stone
Professor of Biology

Student Services



Tom Wiesler
Saga Foods Manager

Staff



Bob Arnold
Director of Financial Aid

Financial Aid

Business Office



Dale Albus
Business Office Supervisor



Janice Junzman
Business Office



Rita McManigal
Bookkeeper



Sandy Sonderup
Student Accounts



Kim Zentmire
Assistant to the Registrar

Development, Alumni And Public Relations



John Beck
Director of Alumni Relations



Ann George
Assistant Director of Pub. Relations



Sharon Gordon
Director of Special Projects

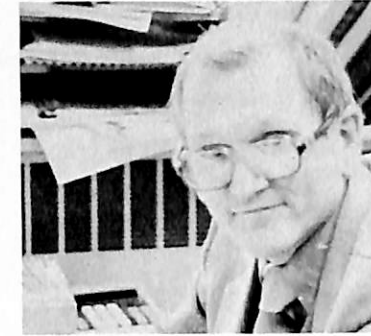


Paul Strand
Assistant Director of Development

Admissions



Lee Johnson
Director of Admissions



Vaughn Christiansen
Admissions Counselor



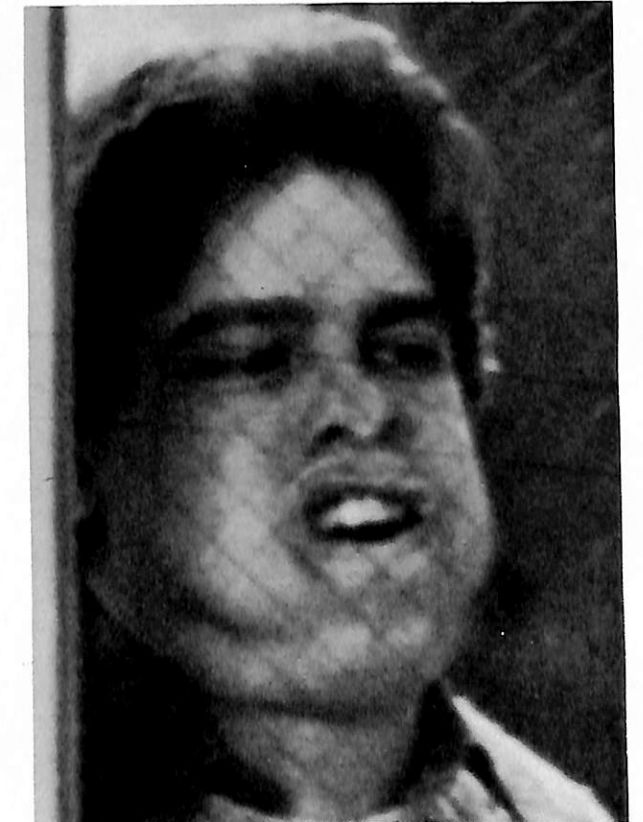
Judy Csejthey
Admissions Counselor



Ted Hanlon
Admissions Counselor



Michael Jones
Assistant Director of Admissions



George Schuler
Admissions Counselor



Tim Nietfield
Admissions Counselor



Housing Staff



Esta Deets
Mickelsen Hall Head Resident



Iris Frey
Blair Hall Head Resident



Alice Laaker
Campus Hostess



STUDENTS



Alexander, Dan
Social Work, Sociology
Auxter, Dan
Business Administration
Beck, Eric
History
Biffar, Laurel
PE, Health

Broeker, Laura Ann
Elementary Ed.
Buchanan, Scott
Biology, PE, Health
Christensen, Scott
Business, PE, Health
Clifford, David
Mathematics

Connce, Peggy
Elementary Ed.
Cooper, Tim
PE, Health
DeBuhr, Dale
Recreation
Dickerson, Davin
Biology

Dutch, Colleen
Elementary Ed.
Feller, Laurel
Biology, Env. Studies
Fett, Curt
Business Economics
Frahm, Connie
Speech, Theatre

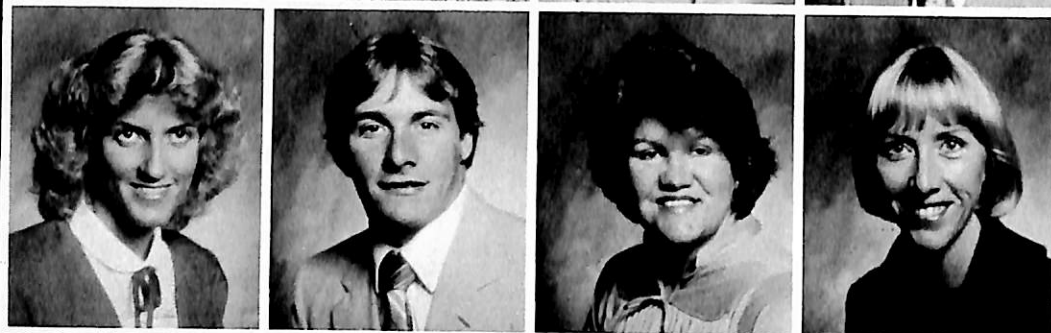
Friis-Hansen, DiAnn
Religion
Friis-Hansen, Mark
History
Fritz, Kathy
Elementary Ed.
Gardner, Lanette
Mathematics

SENIORS

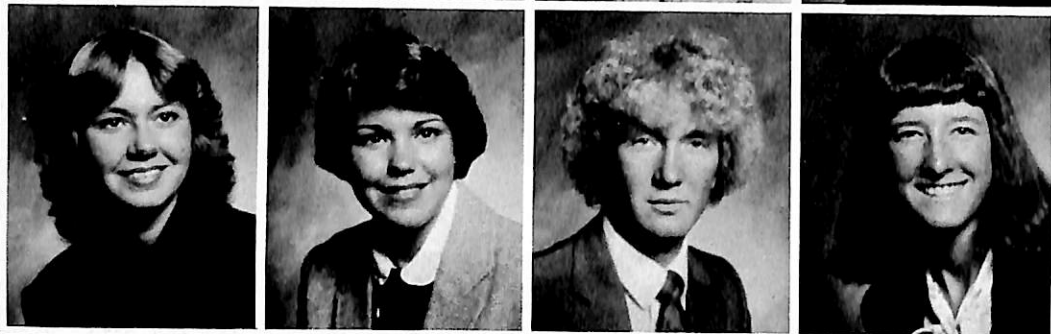
Garrells, Kerry
Physical Ed.
Gerking, Kathy
German, Humanities
Gibson, Russell
Environmental Studies
Gorud, Scott
History, Humanities



Hanson, Lisa
Elementary Ed.
Harm, William
Art
Harris, Debbie
Elementary Ed.
Heinrich, Jane
Elementary Ed.



Hernes, Karla
Mathematics
Hineline, Penny
Business Administration
Hohneke, Mark
Business Ad, Econ.
Holmquist, Amy
Mathematics



Holz, Wilbur
Humanities



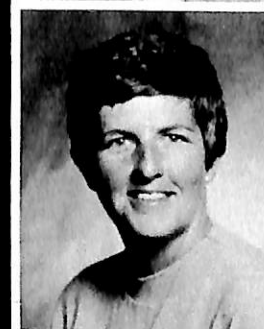
Hungerford, John
Business Administration



Hungerford, Vicki
Business Administration



Jensen, Jennifer
English, Speech & Theatre
Jensen, Melinda
Music Education
Johns, Danette
Social Work
Johnson, Pauline
Elementary Ed.



Johnson, Sandra
Elementary Ed.
Jones, Tony
Business Economics
Judson, Paul
Humanities
Keenan, Ellen
Elementary Ed.

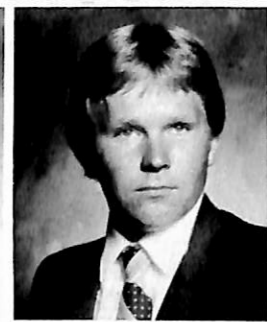
Kelly, Terry
PE, Health



Kenealy, Patrick
Accounting, Business, Economics



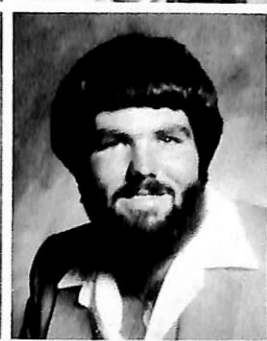
Kennedy, Connie
Biology
Kimm, Joel
Business Administration
Kloth, Tim
Humanities
Lane, Mitch
Business Administration



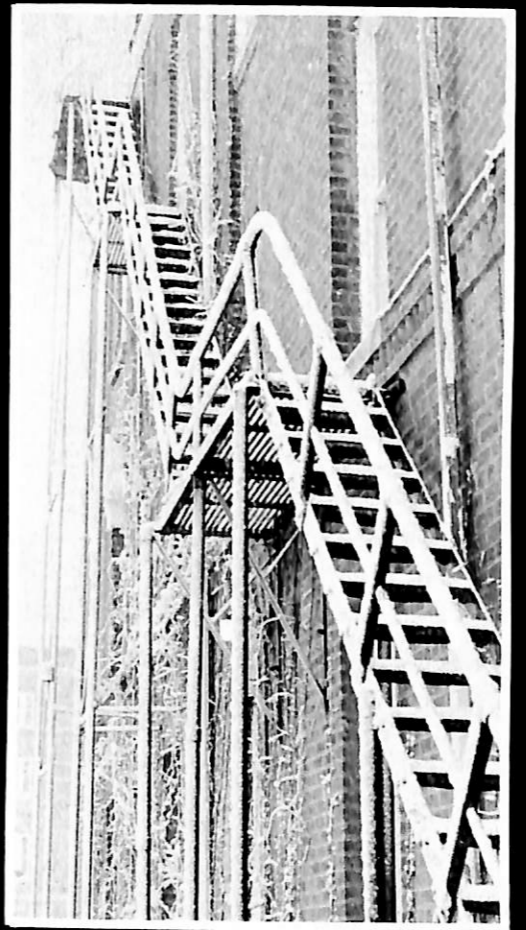
Laune, Annette
Psychology, Business Ad.
Laune, Kayla (Walsh)
Elementary Ed.
Lazzaro, Suzanne
English, Humanities
Lee, Kevin
Psychology



Maystrick, Jan
Art
Meeker, Paul
Psychology
Miller, Elizabeth
Art
Mingus, Ruth
Biology



Mumm, Linda
Social Science
Narjes, Brenda
Social Work
Neve, Lori
Social Work
Newman, Rhonda
Sociology



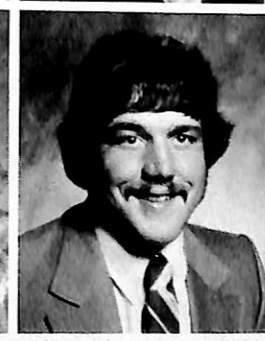
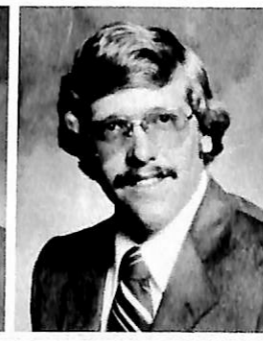
Nichols, Amy
Music Education
Northrup, Tami
Elementary Ed.



Olsen, Carol
Elementary Ed.
Pash, Shari
Elementary Ed.

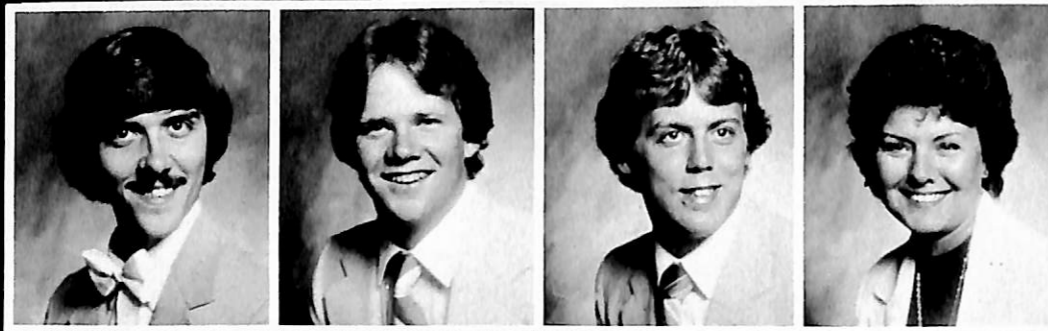


Prillaman, Donnalee
Accounting, Business Ad.
Ragan, John
Humanities, Speech



Rasmussen, Scott
Accounting, Mathematics
Rath, Mark
Religion
Ray, Janelle
Elementary Ed.
Reding, Pat
Elementary Ed.

Render, Anthony
Accounting, Business Ad.
Reuter, Bret
Psychology
Rotherham, Pat
Accounting, Business Ad.
Salter, Cheryl
Elementary Ed.



Samuels, Robert
Business Administration
Seefus, Mark
Business Administration
Seitz, Eric
Psychology
Schaffer, Craig
Elementary Ed.



Steenbock, Denise
Social Work
Swensen, Todd
Business Administration
Tanner, Mickey
Art, Commercial Art
Udoh, Bassey
Business Administration



Wacker, Diane
Elementary Ed.
West, Margie
Biology, General Science
Yusten, Judy
Elementary Ed.
Zabel, Steve
Accounting

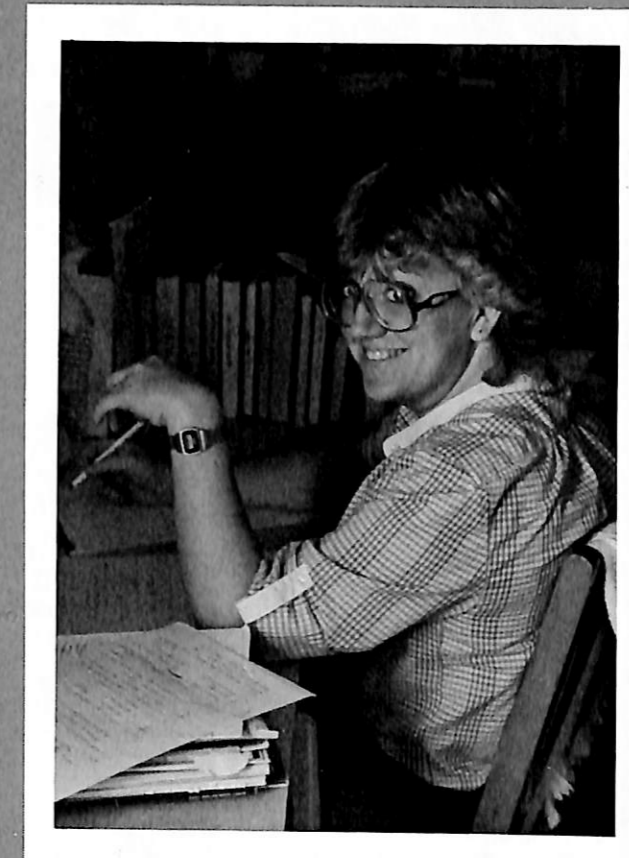


(Seniors Not Pictured)

Barber, Tim
Business Administration
Barrier, Duane
Accounting, Business
Cue, Alan
Elementary Ed.
Carrier, Scott
Speech, Theatre
Knutson, Rick
Biology, Speech
Murray, Mark
Phys. Ed.

O'Brien, Phil
Elementary Ed.
Page, Mark
Business, Economics

Peterson, Scott
Social Science
Reed, Gary
Art
Rew, Mitch
Business Administration
Savino, Don
Phys. Ed.
Spurgeon, Stan
Business Administration
Watson, Virgil
Psychology



JUNIORS

Atkinson, Jenny
Behrens, Paul
Berkland, Curt
Best, Brad
Bryan, David



Buckley, Jann
Butts, Janice
Bybee, Jim
Carlson, Jenny
Christensen, Jill



Collins, Felicia
Danahy, Leanne
Danforth, Rick
Dettmer, Anita
Elliot, Julie



Ellis, Jeff
Erickson, Mary
Evenson, Jan
Faudel, Heidi
Fitzke, Leslie



Fredericksen, Linwood
Galvin, Lisa
Hagedorn, Randy
Hansen, Sarah
Harper, Steven



Hinds, Sheila
Hineline, Patty
Hutton, Celeste
Iske, Kris
Johnson, Andy



Johnson, Kevin
Johnson, Tim
Kammerer, Tom
Kester, Sheryl
King, Jean



Knutson, Troy
Krula, Brenda



Larsen, Liza
Larsen, Pam



Larsen, Carol
Lindahl, Lucy
Lytle, Debra
Martin, Michael
Matthews, Kathy



Mattley, Ryan
Mayberry, Brenda
Moline, Lynne
Monson, Shari
Nelson, Barbara



Nohrenberg, Tera
Olson, Deb
Persing, Lori
Petersen, Lynn
Peterson, Shelly



Peterson, Steve
Plettner, Carol
Quale, Thomas
Radke, Carol
Rasmussen, Kim



Rasmussen, Susan
Reuter, Karen
Ritterling, Patti
Rosenthal, Mark
Sayer, Cynthia

Scheele, Monte
Schlange, Janice
Schmoll, Robert
Sibole, Phil
Snow, Rebecca



Sorensen, Terry
Speck, Devon
Stern, Linda
Stokebrand, Ellen
Stromberger, Sharon



Thormahlan, Gail
Von Hollen, Michael
Watts, Jeanie
Wilderson, Ellen
Winter, Wayne



Wood, Julie
Wulf, Crystal
Wurzer, Kevin
Price, Joseph



(Not Pictured)
Appel, Steve
Barrett, Brian
Braun, Gladys
Bogardus, Scott
Boltinghouse, Kerry
Cohrs, Gwen
Cook, Dale
Flynn, Monte
Frisk, Dixie
Goolsby, Alyce
Hansen, Kristie
Heiman, Gerald
Hendrickson, Lori
Joseph, Don
Kreuztian, Karen
Law, Thomas
Lemon, Linda
Little, Chris

Nelson, Brian
Murtaugh, John
Rider, James
Ricks, Lynne
Rhower, Dave
Sauvain, Steve
Seaman, Richard
Seburg, Jeanette
Seffus, Mark
Shaw, Al
Shutter, Cathy
Stokely, Sean
Swensen, Kristi
Tietz, Rebecca
Tuthill, Brian
Weatherly, John
Wilkins, Chauncy
Wiseman, Robert

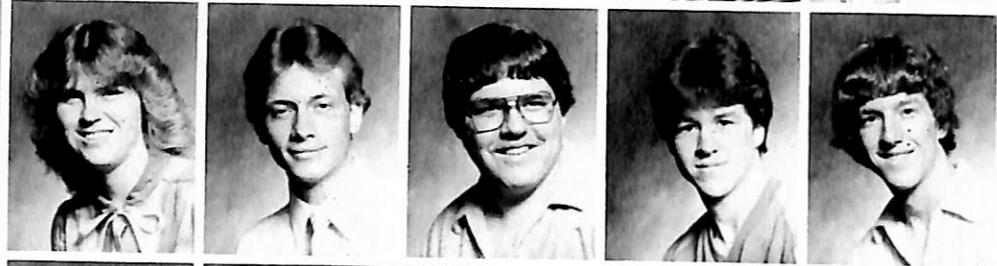


SOPHOMORES

Anderson, Don
Anderson, Connie
Barton, Chris
Buswell, Todd
Comer, Sue



Cornell, Donna
Courtney, Stacey
DeYoung, Jeff
Dibben, Dan
Dibben, Dave



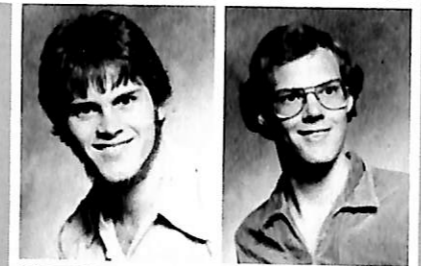
Dittmer, Don
Dunn, Marla
Dutch, Peggy
Faudel, Annette
Fletcher, Lorraine



Foster, Debbie
Foust, Evonne
Fox, Chere
Fredrick, Phil
Hackett, Lisa



Hansen, Ron
Hansen, Ted



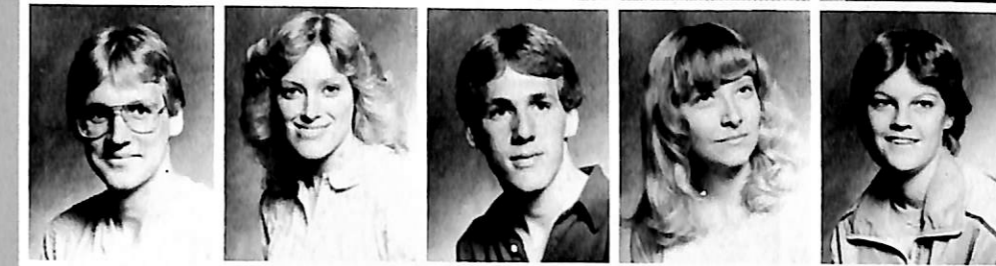
Harrison, Pat
Harskamp, Jill



Heistand, Diane
Hendrix, Laurie



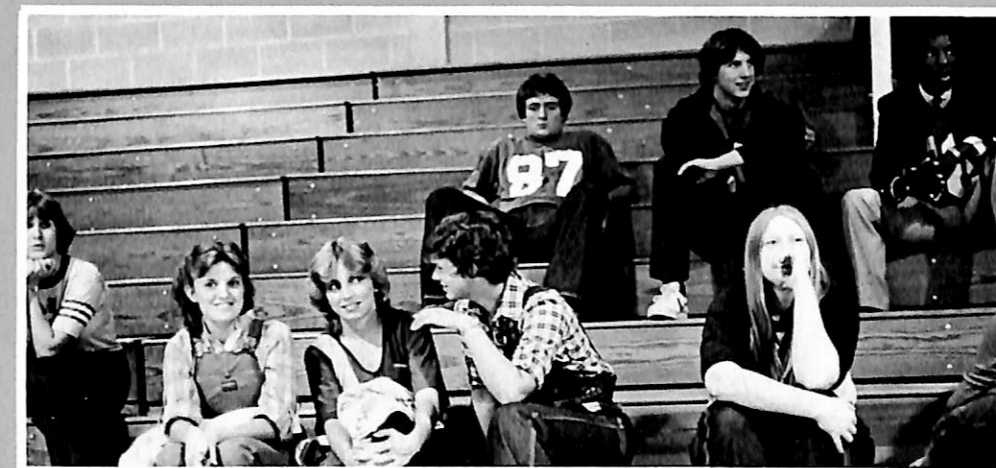
Herrold, Jim
Hester, Kristine
Huff, Sandy
Jacobson, Peter
Jansen, Larry



Jensen, Dan
Jorgensen, Joanne
Kirk, Mike
Kirkegaard, Linda
Klosterman, Anna



Koca, Tim
Korth, Chris
Krenzen, Christy
Kreutzian, Marlene
Krueger, Jim



Lady, Kirsten
Lauritsen, Diane
Lazzaro, Lawrence
Lenners, Tony
Levine, Jeff



Lockridge, Sharon
Lorenzen, Cindy
Mead, Christi
Meier, Mark
McCormick, Carla

McCoy, Val
Miller, Marin



Mills, Deanne
Moore, Dan



Nelson, Cindy
Nelson, Shellie



Nickeson, Diane
Nielsen, Deanne
Nock, Richard
Nouss, Linda
O'Dell, Bev



Olsen, Kris
Ostrem, Sue
Peterson, Cyndi
Peterson, Rex
Pithan, Julie



Quist, Susie
Rahmann, Brian
Reinke, Stacie
Rew, Theresa
Robinson, Pam



Rodenburg, Randa
Rogers, Scott
Rogert, Jill
Schartow, Billie
Schlange, Bill



Schou, Cynthia
Schwenker, Sally
Skovgaard, Alex
Smith, Emily
Sorensen, Peggy



Specht, Chris
Speck, Howard
Stone, Sherrie
Therp, Kerry
Uhlinger, Keith

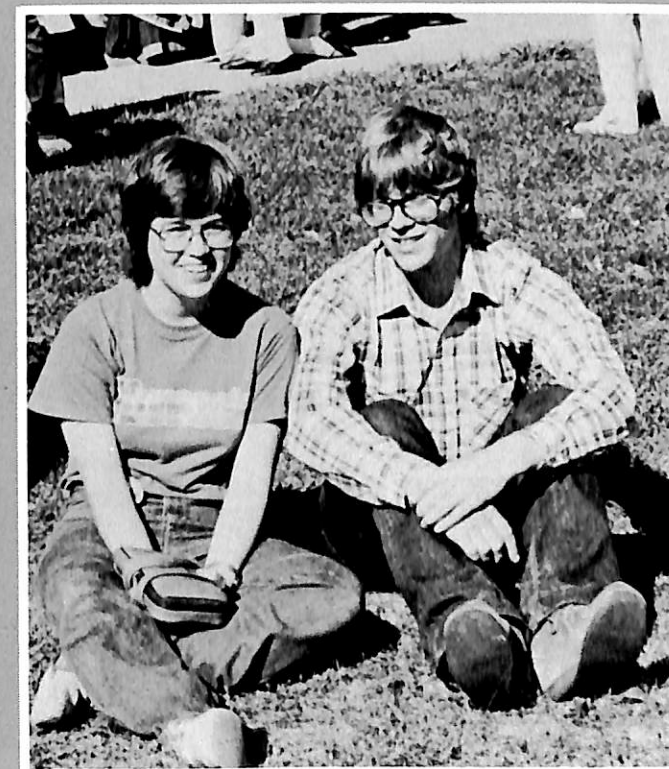


Weber, June
Welp, Brad
Wiemer, Stephanie
Wilson, Gina
Winther, Jody



Zimmerman, Sharon

(Not Pictured)



Ahrens, Stephony
Ammen, Maek
Anderson, Beth
Bansen, Lisa
Bauer, Mark
Berhhagen, Monte
Bro, Michael
Bruenning, Mike
Calvert, Carl
Campbell, Mike
Christensen, Caloline
Curran, Cory
Dierks, Nancy
Etzbach, John
Farr, David
Gulstrom, Jeff
Hazard, Brenda
Jimmerson, Belvis
Kalal, Dan
Kloster, Tara
Kruse, Brad
Labs, Arthur
Lane, Jeff
Larsen, Pam

Martin, Bob
Morgan, Todd
Norby, Tom
Nouss, Robert
Ochillo, Obediah
O'Reilly, Bret
Powell, Curtis
Ragan, Kathy
Reed, Tracy
Roth, Brad
Rudkin, Scott
Salim, Hadi
Schimerowski, Tom
Schoneweis, Russel
Shelton, Teresa
Todd, Brian
Vogt, Lori
Watson, Dana
Welch, Ann
Welch, Jeff
White, Fred
White, Steve
Wilcox, Mark



FRESHMEN



Albert, Kevin
Anderson, Barb
Anderson, Dawn
Appel, Lori
Bakke, Eric



Bansen, Jon
Barrett, Jodie
Benjamin, Emily
Bernasek, Kevin
Bissell, Chris



Blaas, Michelle
Boldsen, Suzanne



Bowles, German
Brockhoff, Karen



Bulow, Randy
Chesher, Christina



Clancy, Jeff
Clark, Bryan
Clark, Michael
Cleaver, Debra
Coffey, Shari



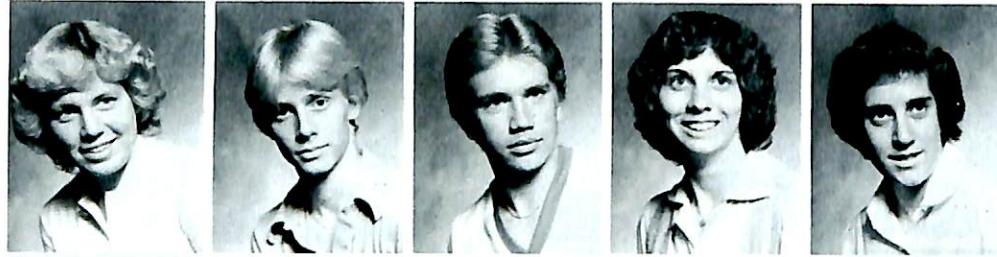
Cotton, Belinda
Daberkow, Tami
DeWall, Joy
Dickinson, Mark
Dill, Deborah



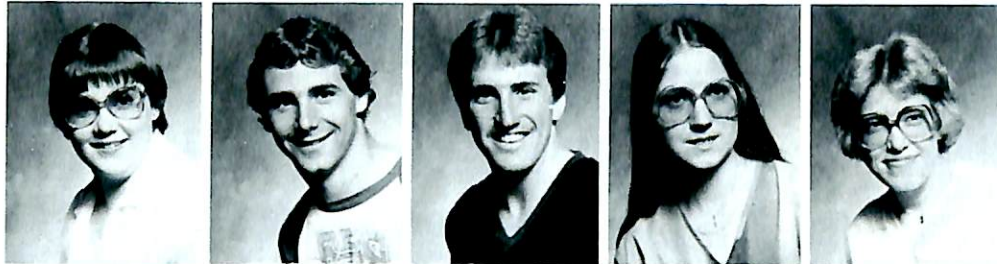
Einspahr, Chris
Ellis, Becky
Enya, Michiko
Evenson, Jill
Frahm, Karla



Frantz, D'Ambra
Fredricksen, Dave
Fredricks, Rick
Frisk, Julie
Frohs, Mary



Geise, Denise
Goodwin, Rick
Gorsett, Steve
Grauerholz Dian
Grauerholz, Julie



Gregory, Laura



Gurnon, Cindy



Hansen, Darli
Hansen, Karen
Hansen, Sonja
Harding, Bradley
Harper, Robert



Hass, Shelly
Hawk, Calvin
Helleberg, Jane
Hennick, Mike
Hermanson, Karl



Herzberg, Jim
Holaday, Dean
Inman, Irene
Jackson, Mark
Jellum, Pat



Jensen, Mark
Jensen, Philip
Johnson, Vickie
Jordening, Tom
Juergens, Mark



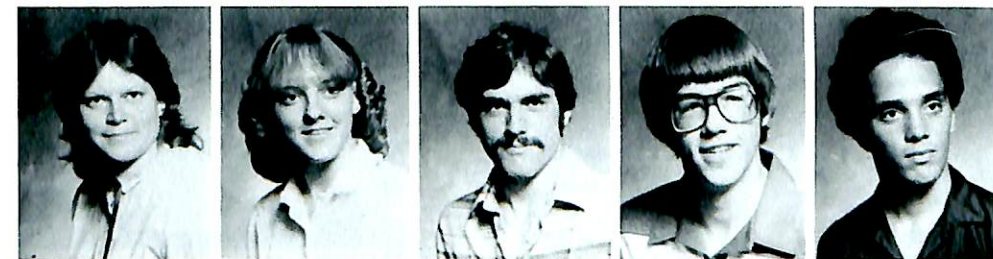
Kelley, Jill
Klein, Ann
Koca, Scott
Komatsu, Chizuru
Kyser, Ron



Larson, Carmen
Lawson, Krista
Lewis, Kevin
Lindberg, Alicia
Lunzman, Janice



McKimpson, Sheila
Majeski, Robert
Manke, Elayne
Messing, Kelly
Miller, Loree



Miller, Loyola
Molzer, Kari Jo
Moss, Jay
Mowery, Robb
Neeman, J. Derek



Nelson, Julie
Nielsen, Curtis
Nielsen, Jen
Nielsen, Lori
Nielsen, Ruth

Noel, Jody



Olson, Cristie



Pedersen, Matt
Pedersen, Terri
Petersen, Christian
Petersen, Jon
Pfannkuck, Kim



Powers, Sonja
Putnam, Susan
Quale, Tim
Richards, Stacey
Rogers, Marty



Rose, Christne
Rosenik, John
Schaberg, Alan
Schade, Jane
Schaffer, Tony



Schwartz, Sarah
Shoemaker, Danielle
Simons, Lewis
Silver, Tracy
Sinkkonen, Arto



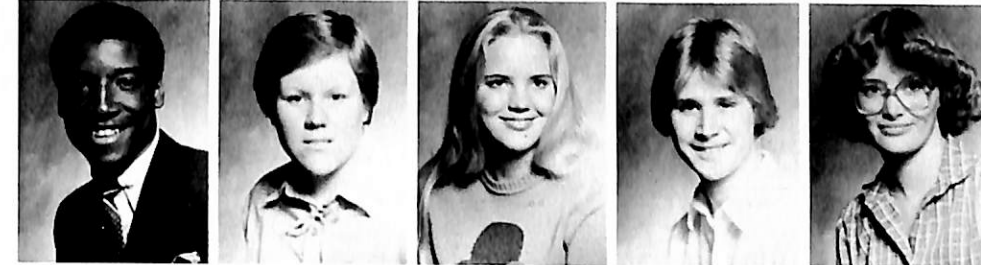
Skadeland, Sandy
Skelnar, John
Sleddens, Chris
Snow, Paul
Soe, Mike



Sorensen, Kim
Sorensen, Nadine
Stumphy, David
Timm, Elynor
Town, Monte



Townsend, Holly
Vogel, Jim
Ward, Julie
Weatherholt, Rick
Westhoff, Jens Eric

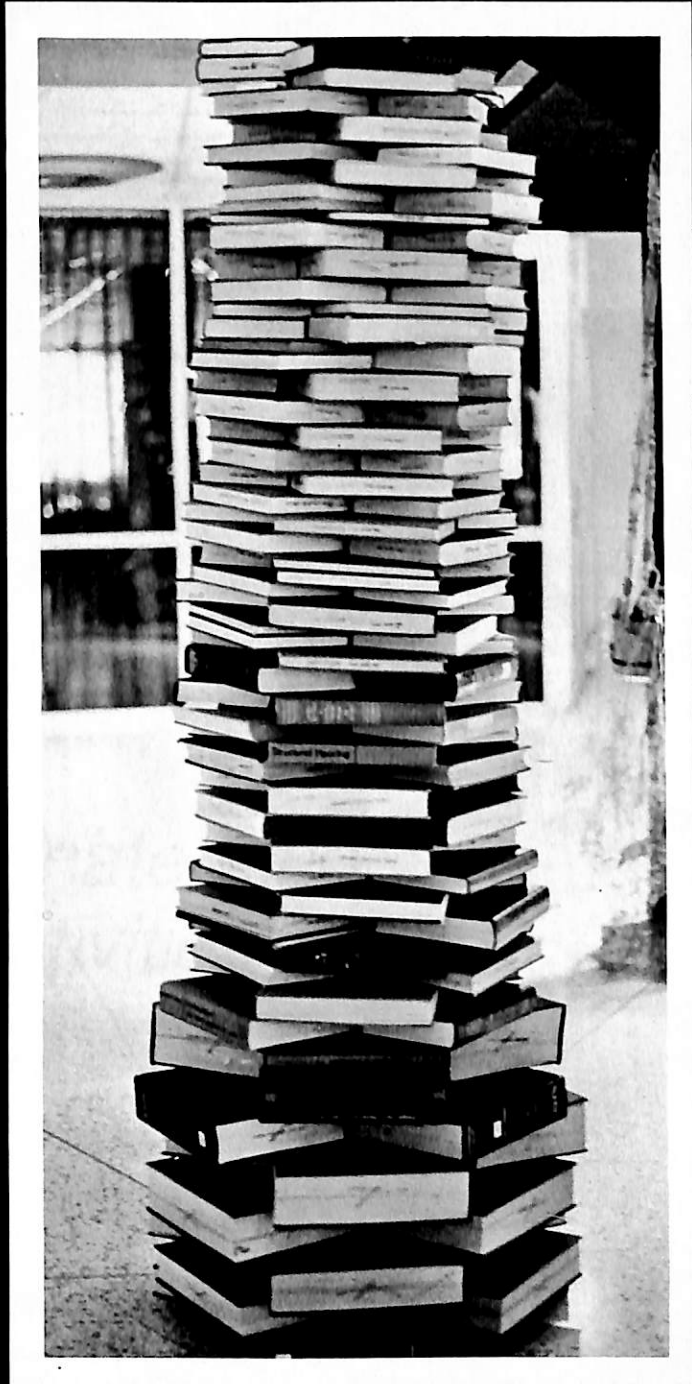


White, Lawrence
Williamson, Julie
Wilson, Nicola
Wood, David
Zimmerman, Lori

Baber, Todd
Barnes, Tami
Bensen, Mark
Blackburn, Benjamin
Bowersox, Kathy
Briggs, Michael
Bruce, Dan
Buchanan, Peggy
Bumsted, Jeff
Bussey, Bill
Byerly, Doug
Carstensen, Marcene
Case, Doug
Christensen, Jill
Collins, Tim
Cortese, Scott
Czajkowski, Ron
Dahlgren, Scott
Davis, Tony
Deckard, Bruce
Doksansky, Scott
El-Aghel, Abubahr
Faudel, Henrick
Franklin, Don
Fullmer, Paul
Goodman, Ron
Goodrie, Tom
Gosser, Karen
Green, Janice
Grote, Dennis
Hamke, Lourie
Harker, Jim
Harms, Tim
Harper, Scott

(Not Pictured)
Heller, Russell
Hernes, Kevin
Higgs, Val
Hood, Jim
Howell, Robert
Hughes, Kurt
Jones, Vicki
Kennedy, Alan
Killinger, Michael
King, Carol
King, Ed
Kissel, Steve
Klover, Kathy
Knuth, Kris
Kohout, Jon
Kostzewa, Brent
Kramer, Forest
Larsen, Karla
Lausterer, Kris
Mahgoulb, Ibrahim Ahmed
Mansch, John
Martinson, Ron
Matson, Darrell
Miller, Cammy
Mitchell, Robert
Morales, Jaime

Munch, AnAnn
Needens, Kevin
Nielsen, Jeri
Nixon, Mark
Noren, Robert
Nottlemann, Michael
Olsen, John
Olson, Sharon
Oyler, Tommy
Peters, Scott
Pillay, Ron
Reed, Kevin
Reimer, Keith
Reiter, Russell
Richards, Stacey
Rogert, Jill
Ross, David
Schaffer, Mark
Smith, Mike
Sorenson, Tom
Stephenson, Mark
Stessman, Martin
Street, Sharon
Tillman, Steven
Vogt, Leland
Wadumbiya, Bensen
Walker, Matthew
Wallace, David
Washington, Howard
Weaver, Gregory
Wilson, Jeff
Winchester, Matthew



ORGANIZATIONS

Ekklesia Koinonias And Ministry Teams



Sonlight. Row 1: A. Fredricksen, W. Holz,
Row 2: M. Frohs, M. Erickson, S. Ostrem, B.
Ellis, L. Galvin, K. Lee. Row 3: J. Williams, J.
Barrett, L. Lindahl, D. Olson, and D.
Prillaman.

Ekklesia Koinonias provides Dana with its own campus congregation and sponsors such events each year as the David Meece Concert presented in 1982. The Council plans to continue serving Dana with Christian attitudes. The Ministry Teams help to up hold the Christian atmosphere at Dana.

Now and Forever. Row 1: C. Larson. Row 2:
P. Meeker, S. Schwartz, D. Andersen, J.
Evanson, J. Evason, V. McCoy, S. Kester.
Row 3: C. Lorenzen, D. Johns, and K.
Sorensen.



Ekklesia Koinonias. Row 1: L. Lindahl, D. Cornell, V. McCoy, D.
Prillaman. Row 2: P. Judson, C. Gurnon, M. Juergens, W. Holz,
S. Kester, Pastor Bergquist, and S. Schwenker.



Student Senate: L. Hanson, P. Dutch, L. Danahy, R. Bulow, L. Moline. Row 2: G. Thormahlen, R. Nielsen, D. Geise, J.
Jensen, B. Schmoll, C. Dutch, D. Fredicksen, P. Jellum. Row 3: C. Schaffer, E. Seitz, A. Johnson, K. Johnson, S.
Rasmussen, S. Courtney, B. Harding, and (not pictured) S. Lazzaro.

Student Senate And Student Activities Board

Student Activities Board. Front: B.
Cotton, D. Mills, J. Schade. Back: L.
Miller, A. Johnson, C. Specht, P. Sibole,
C. Schaffer, and E. Wilderson.

Student Senate is the governing body for the students at Dana. Members are elected from the student body as representatives for one year. Senate is most relied upon for the funding of campus organizations. The Student Activities Board plans all the movies, dances, and special events on campus which are designed for the enjoyment of all types of students.





Dana Players. Front: B. Schmoll, T. Quale, A. Labs. Back: C. Dutch, P. Dutch, J. Jensen, C. Schaffer, J. Friske, C. Komatsu and C. Chesser.



Dana Players

Alpha Psi. B. Schmoll, C. Dutch, P. Dutch, J. Jensen and C. Schaffer.



Alpha Psi Forensics

Forensics. Front: J. Jensen, P. Dutch, B. Schmoll. Back: C. Komatsu and C. Olsen.



French Club. B. Boltinghouse, J. Konik (advisor), A. Bakhr, T. Pedersen, T. Quale, J. Friske, S. Olsen, K. Gerking, and Hadi.

International Students Organization. Standing: M. Alaafkhiri, B. Boltinghouse, J. Konik (advisor), M. Enya. Seated: J. Funk, L. Larsen, L. Hendricksen, A. Bakhr, C. Komatsu, S. Boldsen, L. Feller, Hadi, and K. Swensen.



German Club. Row 1: S. Hensen, R. Bulow, S. Peterson, B. Schmoll, K. Frahm. Row 2: E. Timm, B. Boltinghouse, C. Chesser, S. Grorud, K. Kreutzian, R. Kyser. Row 3: K. Klover, D. Stumphy, B. Johnson (advisor), K. Gerking, and J. Oliver. Not pictured: K. Therp and P. Jacobsen.



Foreign Language Clubs

The foreign language clubs provide a chance for students to experience the cultural aspects of the language they are learning. These clubs participate in the festivities at the Sights and Sounds of Christmas demonstrating traditional Danish, French and German Christmases. They also provide films, magazines and even conventions for high schools in the Omaha area to gain further exposure to their languages and cultures.

Danish Club. Seated: S. Boldsen, B. Johnson (advisor), T. Nohrenberg, C. Christensen, C. Lorenzen, J. Oliver. Standing: R. Bulow, J. Westhoff, R. Kyser, D. Stumphy and M. Bro.





Synchronized Swim Team. K. Gosser, S. Coffey, S. Hanson, C. Korth, J. Evenson, J. Wood, S. Boldsen, K. Knuth, J. Schade, B. Anderson, E. Wilderson and K. Therp.

Synchronized Swimmers

Danish Dancers



Danish Dancers. E. Wilderson, D. Fredricksen, M. West, P. Jacobson, W. Holz, B. Harding, M. Rosenthal, J. Yusten, S. Gorud, L. Miller, S. Kester, M. Brockhoff, J. Barratt, L. Lindahl, C. Fett, P. Judson, M. Dickinson, A. Johnson, S. Peterson, D. Johns, L. Danahy, K. Gerking, L. Neve and P. Meeker.

The Dana Synchronized Swim Team has been in existence for six years. This year the team presented two shows, *Splash II* and *Roll with the Changes*, for the Dana community. The Team is student directed by dedicated girls who spend many hours choreographing and perfecting their routines for their performances.

Dana's Danish Folk Dancers is also a student directed organization which performs several times during the year for the students at Dana. Homecoming, *Sights and Sounds of Christmas*, Choir Tour as well as their own Dancers Tour are other appearances made by the dancers. This year they performed for a special NETV program featuring folk dancing.

Opposite: The women and volunteers who serve Parnassus assist the Humanities department and the students. The ladies help coordinate Humanities events and exhibits, while the volunteers donate their time to tabulate events and test scores and help students study for those dreaded Hum. tests.



Parnassus Ladies. Mrs. B. Krantz, Mrs. L. Neve, Mrs. V. Nielsen and Mrs. D. Wright.

Parnassus Volunteers

American Scandinavian Foundation. S. Gorud, A. Johnson, Mrs. L. Neve and Mr. V. Hanson.

A.S.F.



Parnassus Ladies



Parnassus Volunteers. Row 1: A. Johnson, M. vonHollen, D. Olson, S. Peterson, S. Gorud, P. Judson, L. Lindahl. Row 2: D. Prillaman, C. Schou, B. Anderson, T. Nohrenberg, B. Krula, E. Stokebrand. Row 3: P. O'Brien, M. Kreutzian, W. Holz, S. Kester, K. Therp and L. Lazzaro. Not pictured: D. Bruce, L. Danahy, L. Fletcher, I. Frey, M. Friis-Hansen, K. Gerking, S. Hansen, I. Inman, K. Kreutzian, S. Lazzaro, C. Mead, C. Radke, R. Rodenberg, B. Schmoll and R. Schoenweis.



Dana College Jazz Band. (back to front, left to right) T. Koca, H. Speck, D. Speck, P. Meeker, M. Erikson, D. Allen, D. Auxter, J. Ragan, C. Wulf, A. Dettmer, K. Gerking, C. Nelson, and D. Rohwer. Not pictured: C. Fett on drums.

Dana College Concert Band

- Flute
- B. Anderson
- B. Anderson
- J. Evenson
- M. Jensen
- K. Larsen
- C. Lorenzen
- K. Rasmussen
- S. Skadeland
- K. Therp
- Oboe
- L. Persing
- Basoon
- K. Frahm
- L. Neve
- Clarinet
- J. Barrett
- D. Cleaver
- L. Fritze
- D. Giese
- J. Grauerholz
- L. Lindahl
- C. Nelson
- K. Nelson
- D. Putnam
- E. Stokebrand
- J. Williamson
- Alto Clarinet
- L. Fitzke
- J. Schlange
- Contra Bass Clarinet
- K. Nelson
- Alto Saxophone
- A. Dettmer
- K. Gerking
- Tenor Saxophone
- B. Harding
- C. Wulf
- Baritone Saxophone
- D. Rohwer

Bands

- French Horn
- K.J. Molzer
- S. Nelson
- T. Nohrenberg
- L. Ricks
- S. Stromberger
- Coronet and Trumpet
- J. Atkinson
- J. Bansen
- T. Koca
- P. Meeker
- D. Speck
- H. Speck
- Trombone
- D. Allen
- D. Auxter
- M. Erikson
- L. Galvin
- V. McCoy
- M. VonHollen
- Euphonium
- S. Grorud
- D. Moore
- Tuba
- J. Ragan
- String Bass
- J. Nelson
- Percussion
- K. Brockhoff
- E. Bakke
- C. Fett
- T. Knutson
- M. Scheele



The Dana College Choir, under the direction of Dr. Paul Neve, performs for all of Dana's major events, from convocation to graduation and enjoys its own Tour during Spring Break. During the summer of 1982 Dr. Neve took a special Tour Choir to Europe for a month of singing and sight-seeing. Opposite: The Dana College Band was able to tour for the second year in a row during the month of April in '82. The Band's director, Dr. Tom Williams, makes all kinds of music available to his musicians with an active pep band, jazz ensemble, concert band and various small brass and woodwind ensembles.



The Dana College Choir.

- Row 1: M. Juergens, E. Bakke, M. Scheele, K. Johnson, C. Fett, P. Meeker, M. Jensen, M. Dickinson, K. Lee, K. Iske, L. Hansen, C. Olsen,
- Row 2: B. Cotton, L. Lindahl, T. Kloth, P. Jacobson, M. Rosenthal, S. Grorud, R. Fredericks,

- R. Bulow, B. Schmoll, S. McKimpson, A. Klosterman, H. Townshend and D. Nielsen.
- Row 3: L. Danahy, L. Moline, J. Butts, K. Fritz, D. Lauritsen, S. Kester, J. Evenson, S. Ostrem, M. Blaas, D. Anderson, S. Powers, S. Schwartz and M. Miller.
- Row 4: J. Weber, J. Harskamp, D. Nickeson, K. Nelson, J. Carlson, S. Peterson, B. Nelson, J. Williamson, C. Sayer, K. J. Molzer and L. Neve.

European Tour Choir. Row 1: E. Bakke, M. Rosenthal, M. Scheele, S. Grorud, K. Johnson, P. Meeker, C. Fett, M. Dickinson, M. Jensen, K. Lee. Row 2: M. Jensen, D. Lauritsen, L. Hansen, R. Bulow, P. Jacobson, B. Schmoll, A. Klosterman, K. Iske, J. Wood. Row 3: L. Danahy, S. Peterson, J. Barratt, D. Johns, C. Olsen, B. Nelson, J. Nelson, J. Williamson, C. Sayer. Row 4: L. Neve, D. Nickeson, J. Harskamp, J. Weber, A. Nichols, L. Moline, K.J. Molzer, D. Nielsen and K. Nelson.



KDCV



KDCV Staff. Row 1: R. Danforth, S. Doksansky, J. King, M. Walker, T. Johnson, J. DeYoung, J. Carlson, R. Mowery, M. Miller. Row 2: P. O'Brien, L. Fletcher, K. Olsen, L. Fredericksen, J. Ragan, C. Komatsu. Row 3: K. Schutt, K. Bowersox, A. Labs, G. Wilson. Row 4: T. Quale, P. Fredericks and D. Fredericksen.

Soccer Club

KDCV rocks Dana at 91.1 on the FM dial, broadcasting news, sports and music for every type of listener. The campus radio station strove to lure students away from tuning into Omaha stations with expansive programming and a dedicated, creative staff. The Soccer Club generated enthusiasm for its sport especially among Dana's foreign exchange students. This spirit gave the team a competitive edge over their intercollegiate opponents, giving the team a winning season in '82.



Soccer Club. Row 1: D. Bruce, W. Holz, M. Peterson, M. Nixon, (two friendly and unidentified visitors), P. Jellum, H. Faudel, K. Lausterer. Row 2: D. Stumphy, Hadi, R. Nock, P. Harrison, D. Neeman, J. Morales, M. Kreutzian. Row 3: M. Amen, B. Tuthill and D. Moore.



Above, Danian Staff (from top). K. Therp, editor, K. Frahm, D. Olson, T. Quale and S. Nelson. Not pictured: R. Buloa, E. Faust, K. Hermanson, K. Hernes, D. Prillaman and E. Timm. Right, Sower Staff. T. Nohrenberg, J. Jensen, editor, and T. Quale. Not pictured: S. Carrier, L. Fletcher, K. Hernes, C. Hutton, L. Lazzaro, S. Lazzaro and J. Price. Below, Hermes Staff. Row 1: E. Stokebrand, R. Danforth, T. Quale. Row 2: L. Lazzaro, editor, C. Mead, editor, and L. Galvin. Not pictured: J. Schlange.

DANIAN HERMES AND SOWER STAFFS

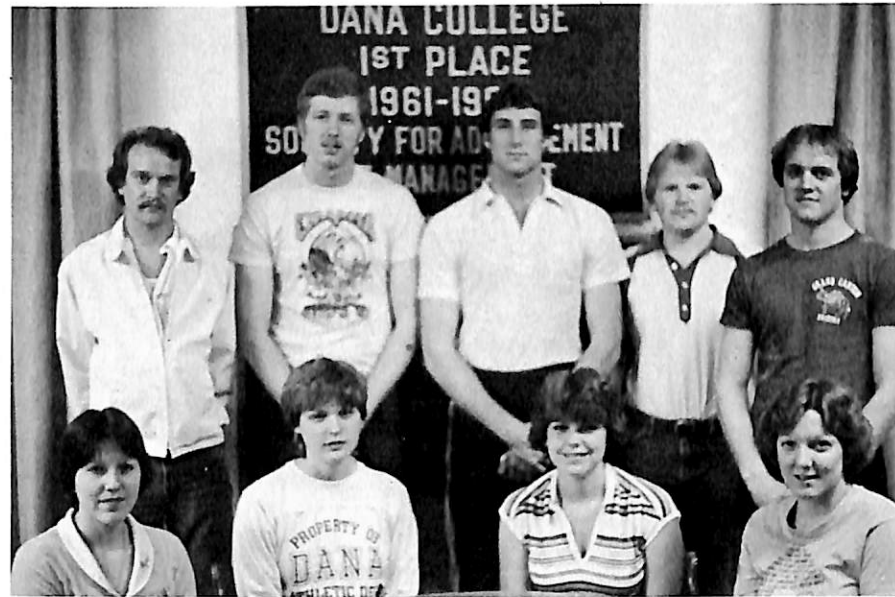


The Danian and Hermes Staffs united in '82 to improve the quality of publications at Dana. Struggling against such obstacles as inexperienced editors, poor facilities and general student apathy, the Publications overcame by proving their versatility and creativity. All three publications are produced by students, for students, although faculty members are also encouraged to contribute. As the "Messenger of Dana" the Hermes reports bi-monthly the news and events both campus and nation wide. The Sower is the literary magazine of Dana with poetry, short stories and translations submitted by students. More than just a picture-book, the Danian captures the unique life-style at Dana and memories for all who pass through these halls.



S.A.M.

Society for the Advancement of Management.
Row 1: S. Gammel, M. Page, P. Kenealy, J. Kimm, D. Barrier. Row 2: K. Rasmussen, H. Faudel, P. Hinline and L. Persing.



Alpha Chi

Alpha Chi. Row 1: K. Gerking, S. Grorud, A. Johnson, D. Johns, A. Render, J. Seberg, D. Olson, S. Pash, K. Laune, M. Tanner, D. Friishansen, A. Dettmer, W. Winter, P. Berhens, C. Sayer. Row 2: T. Quale, J. Maystrick, C. Wilkins, C. Larson and B. Schmolli.

S.E.A.

Student Educators Association. Row 1: A. Dettmer, K. Fritz, K. Iske, J. Atkinson, L. Moline, E. Keenan, A. Nichols, L. Hanson, L. Gardner, D. Wacker, T. Northrup, C. Olsen, V. McCoy. Row 2: Mrs. D. Olson (advisor), J. Yusten, M. von Hollen, C. Schaffer and T. Nohrenberg.



Ars Medica. Row 1: R. Mattley, B. Mayberry, T. Knutson, M. Scheele. Row 2: C. Larson, B. Krula, C. Barton, D. Lytle and J. Herrold.

ARS Medica

Ars Medica believes in service, informing both its members and the Dana community since its formation in 1970 on medical issues and concerns. The Science Club was formed in 1982. As an outgrowth of Ars Medica, the Club devoted to a wider spectrum of scientific interest.

Science Club



Opposite. Like the Science Club, S.A.M. and S.E.A. provide support and interest groups for students entering the fields of management and education. Alpha Chi, Dana's Honor Society, gives recognition to those juniors and seniors who have maintained at least an 8.0 GPA for three semesters or more.

Science Club. Row 1: J.E. Westhoff, T. Morgan, E. Manke, R. Rodenberg, D. Case. Row 2: M. Meier, M. Kreuztian and M. Nixon. Not pictured: D. Farr, P. Fromm, R. Mattley, A. Sinkkonen, S. Stokley and C. Wilkins.

Sorority And Hall Staffs

Founded on the Dana campus in 1968, Kappa Theta Phi provides services to campus and community while offering its pledges an organization of sisterhood and unity, of friendship and loyalty. The Resident Hall Staffs provide guidance and understanding as well as peer discipline for every student on campus.



Kappa Theta Phi. Row 1: J. Pithan, P. Robinson, J. Jorgenson, B. Shartow, Row 2: S. Pash, L. Fitzke, S. Zimmerman. Row 3: C. Barton, S. Monson, P. Hinline, Row 4: P. Coonce, C. Nelson, S. Ahrens and T. Pedersen.



Holling RA's. Row 1: J. Herrold, S. Courtney, P. Behrnes, M. Scheele. Row 2: P. Meeker (HR), D. Bryan and D. Rohwer.

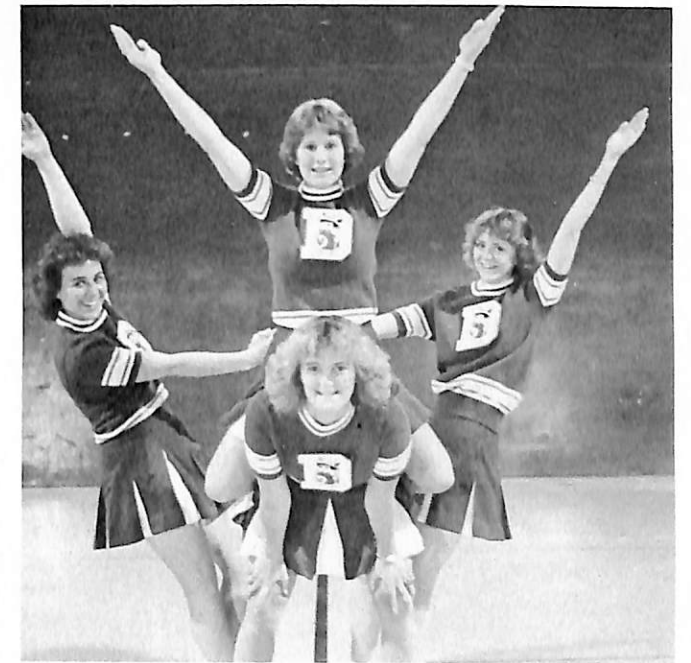
Women RA's. Row 1: I. Frey (HR), S. Comer, J. Oliver, R. Rodenberg, V. McCoy. Row 2: L. Galvin, Mrs. E. Deets, (HR), M. Kreuztian, C. Kennedy, K. Garrels, S. Lazzaro and D. Johns. Not pictured: J. Butts and K. Gerking (HR).

Rasmussen RA's. Row 1: K. Lee, C. Fett (HR), S. Peterson, M. Meier and T. Johnson. Not pictured: M. Page.



Varsity Cheerleaders (from left). L. Nouss, E. Faust, P. Dutch, C. Dutch, B. Tietz, P. Robinson, K. Hester and C. Krenzer. Below, Junior Varsity Cheerleaders. C. Rose, A. Klein, J. Nielsen and K. Lawson.

Cheerleaders And New Sparkle



Dana Cheerleaders add color and zest to football, basketball, volleyball and wrestling seasons. Another new organization in 1982, the Dana Sparkle, a pom-pom squad, added spirit with its half-time dance routines . . . Two-bits, four-bits, six-bits, a dollar, all for Dana stand up and holler!



Dana Sparkle. Row 1: A. Lindberg, J. Elliot, D. Heistand, D. Lauritsen, S. Pash, M. Blaas. Row 2: J. Nielsen, B. O'Dell, L. Gardner, S. Huff, D. Shoemaker, S. Comer. Row 3: J. Harskamp, S. Weimer, J. Kelly, L. Hendrix and J. Weber.



SPORTS

Football



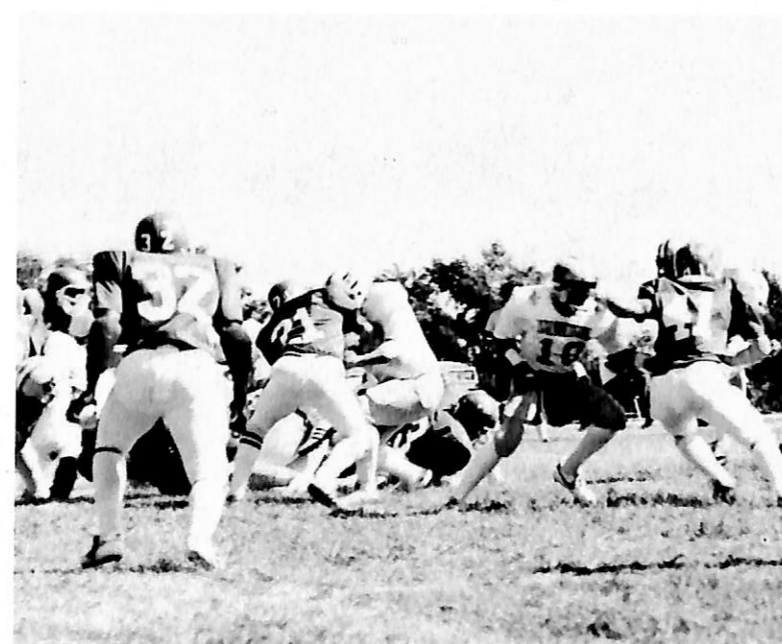
In his third year, Ron C. Johnson is the Head Coach of the Dana Viking football team. A graduate of Dana and Northwest Missouri State University, Mr. Johnson has coached at Anita, Iowa, Community High School and was an assistant coach and recruiting coordinator for Iowa Central Community College in Fort Dodge. While at ICC, his team won the 1978 Junior College National championship and a berth in the Coca-Cola bowl.

Sept. 12	Dakota Wesleyan	W
Sept. 19	Yankton	L
Sept. 26	Westmar	L
Oct. 3	Midland	L
Oct. 10	Doanne	L
Oct. 17	Hastings	L
Oct. 24	Concordia	L
Oct. 31	Neb. Wesleyan	L
Nov. 7	Kansas Benedictine	L

The 1981-82 Dana Viking football team had a record of 1-8. Senior Tim Barber was named to the All-Conference football team. At the Spring Sports Awards Banquet, Carl Calvert and John Murtaugh were named Most Valuable offensive and defensive players, respectively. Voted as the Most Improved defensive player was Rex Peterson. Although the team lost eleven to graduation, the prospects for a strong season in 1982-83 look good.

Viking-Ball!

The 1981-82 Vikings coaching staff assisted Coach Ron Johnson in these specific areas (left to right): Tim Cooper, offensive tackles; Mike Miller, offensive line; Matt Walker, defensive ends; Vaughn Christensen, defensive line; Steve Johnson, offensive running backs; Scott Peterson, defensive secondary; Paul Peterson, Dana Athletic Director and defensive secondary; Scott Buchanan, defensive linebackers; Pat Rotherham, defensive secondary; Dale Pash, offensive receivers; and Jay Hartong, kickers, punters and training.



Offensive Unit (left to right from back): M. Briggs, D. Grote, R. Reiter, C. Warden, K. Albert, G. Weaver, T. Reed, B. Roth, B. Todd, R. Samuels, R. Czajkowski, P. Fredricks and S. Peters. Row 2: J. Kahout-Manager, D. Case, P. Fromm, K. Lausterer, J. Clancey, J. Sauvin, B. Marin, K. Bernasek, S. Kissell, J. Freburg, T. Barber, L. White and C. Specht. Row 3: J. Reinhardt, B. Blackburn, M. Stephenson, S. Spurgeon, T. Davis, R. Peterson, J. Moss, J. Marsh, S. Richards, B. Kastazewa, J. Bumsted, R. Goodwin, B. Clark, T. Goodrie, B. Harm, D. Dickerson and J. Welch.



Defensive Unit (left to right from back): S. Cortese, M. Stessman, K. Reimers, B. Nelson, T. Harms, C. Hawk, K. Boltinghouse, C. Calvert, K. Amen, R. Reiter, J. Gulstrom, P. Sibole and S. Gorsett. Row 2: D. Barrier, M. Schaeffer, J. Vogel, B. Bussey, B. Deckard, B. Nouss, M. Campbell, C. Einsphar, M. Rew, K. Uhlinger, S. Christensen, R. Heller, J. Kruger, S. Bogardus, J. Hood, P. Fullmer and G. Reed.



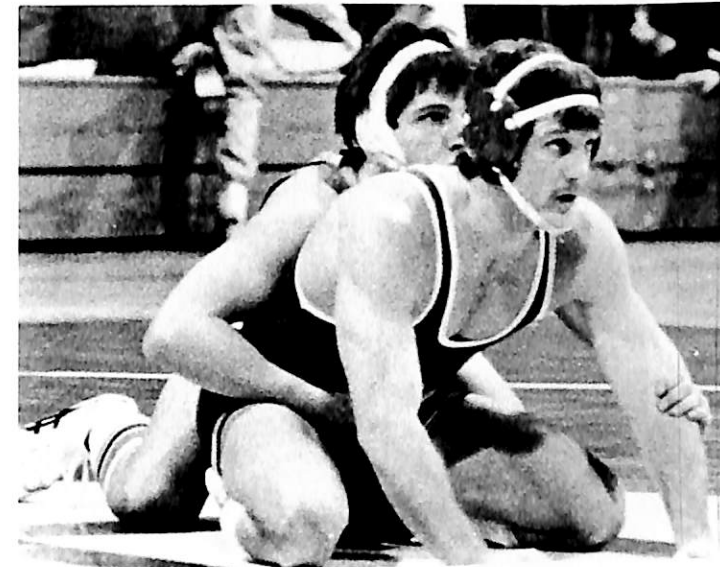
The 1982 Dana Viking Football Team



Volleyball

Honored for her outstanding leadership qualities during the 1982 season was senior Peg Coonce. Kayla Laune, also a senior, was honored as this season's most valuable player. Coach Haussermann's assistant was Lynae Vanderweil.

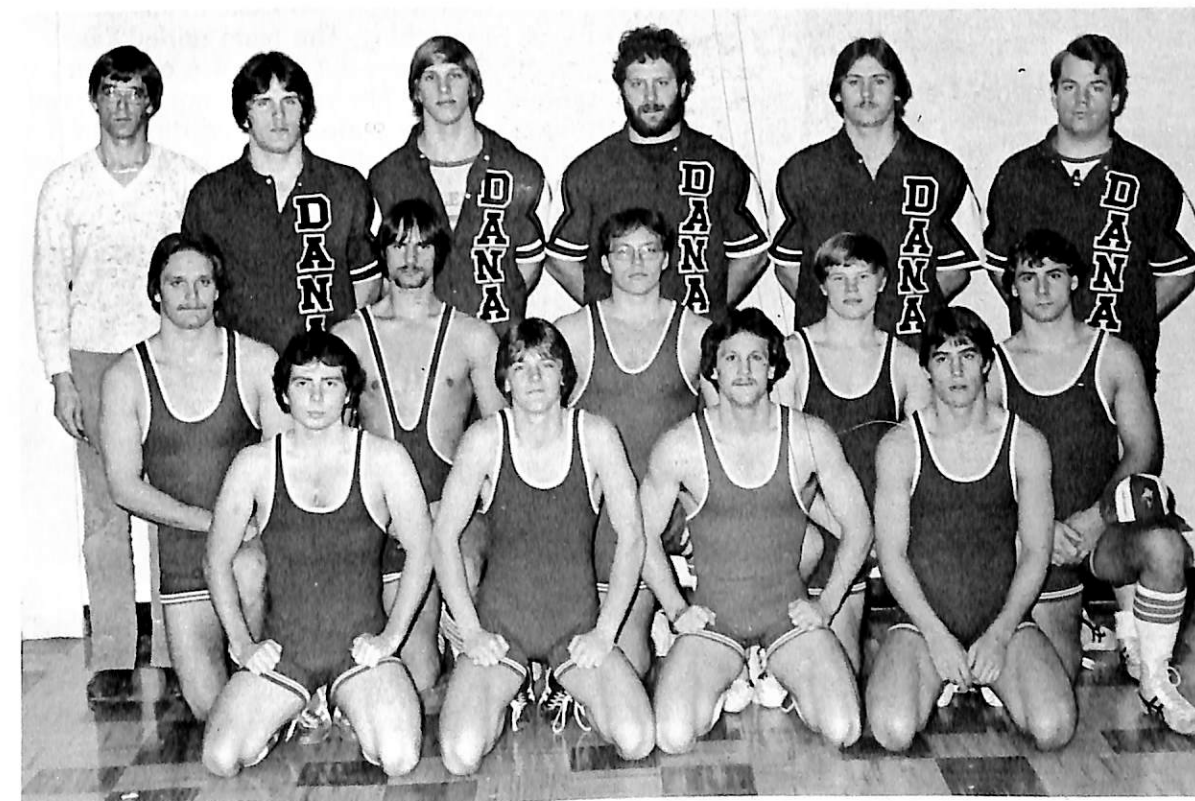
1982 Dana College Women's Volleyball Team. Back Row: Coach C. Haussermann, P. Buchanan, J. Schlange, T. Kloster, P. Coonce, K. Laune, P. Robinson, D. Cornell, J. Jorgensen, V. McCoy, S. Hinds, S. Putnam and L. Vanderweil; Front Row: K. Garrells, H. Townsend, T. Daberkow, B. Shartow, T. Pedersen, J. Evenson, L. Miller and T. Rew.



Wrestling

The Wrestling season was highlighted as Bill Bussey, Jim Krueger and Don Joseph participated in the National meet held in Portland Oregon. "Dana has made steady improvement this season against very tough competition." Coach Beaman said. Losing no grapplers to graduation this year, the 1983 season holds a promising outlook.

1982 Dana College Wrestling Team. Row 1: B. Wiseman, T. Schaeffer, C. Berkland and J. Harms; Row 2: D. Joseph, K. Uhlinger, K. Lausterer, P. Jellum and T. Schimerowski; Row 3: Coach Beaman, J. Bumsted, B. Bussey, F. White, J. Krueger and J. Hood.





1982 Dana College Men's Varsity Basketball Team. Back Row: T. Krammerer, D. Jensen, R. Hagedorn, M. Page, P. Kenealy and M. Kirk; Front Row: T. Kelly, T. Koca, L. Jansen, J. Sklenar, J. Herrold and C. Curran. Not pictured: R. Mitchell.



The 1981-1982 basketball season was Coach Paul O. Peterson's last year of coaching. The team ended the season with an 8-18 overall record and a 4-6 conference record. Two seniors, Terry Kelly and Pat Kenealy, played in the District NAIA All-Star game. Kelly and Kenealy were also voted as the most valuable players for the season.



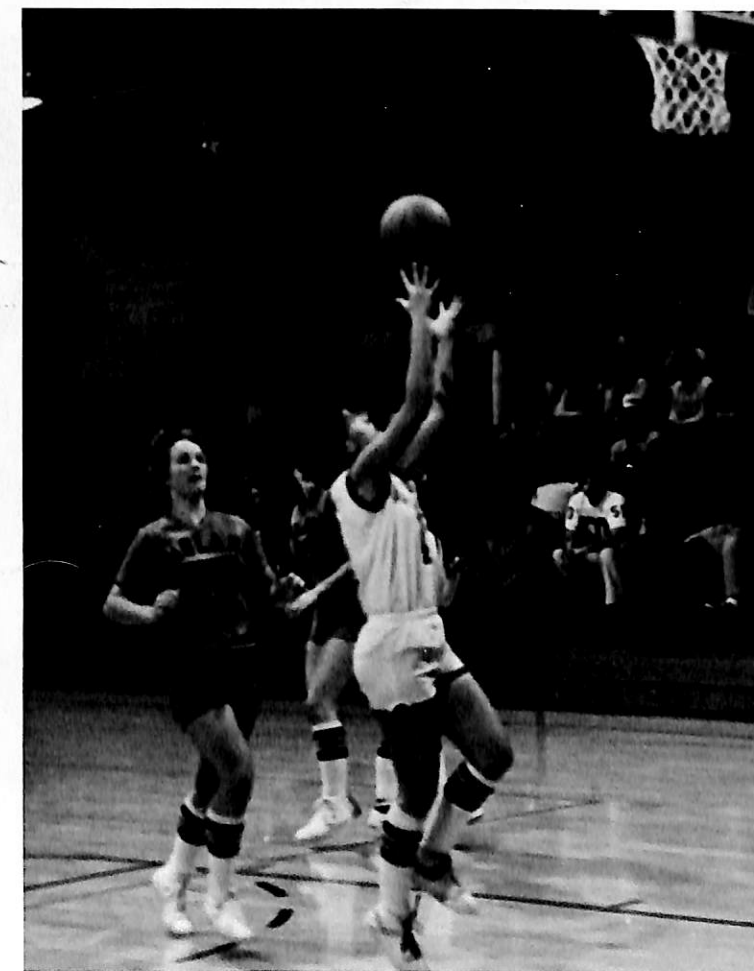
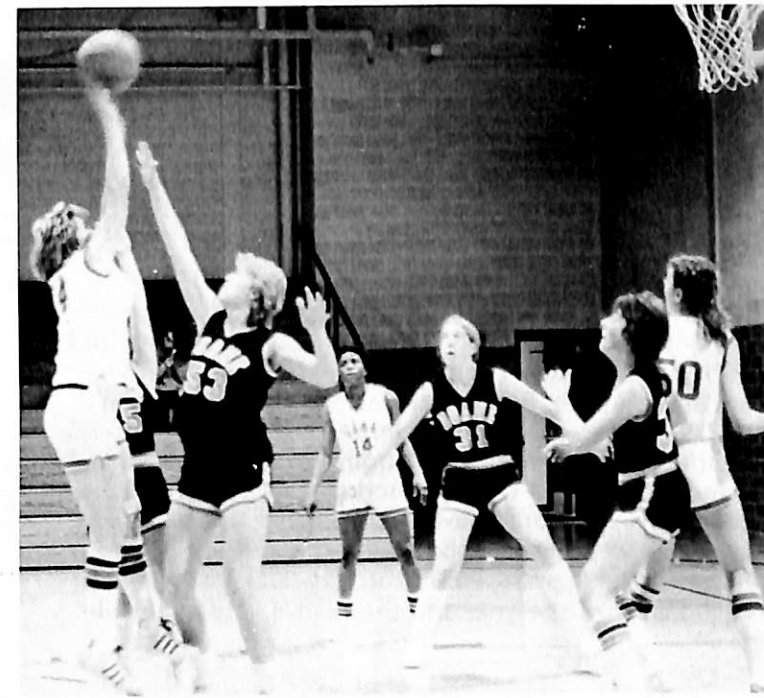
Basketball



Women's Basketball



1982 Dana College Lady Viking Varsity Basketball Team. Back Row: Assistant Coach K. Wurzer, L. Nielsen, A. Faudel, P. Ritterling, L. Vogt, S. Hinds, K. Garrels, F. Collins, P. Buchanan and Coach K. Foley. Front Row: K. Pfannkuch, J. Watts, D. Cornell, C. Kennedy, J. Christensen and L. Persing.

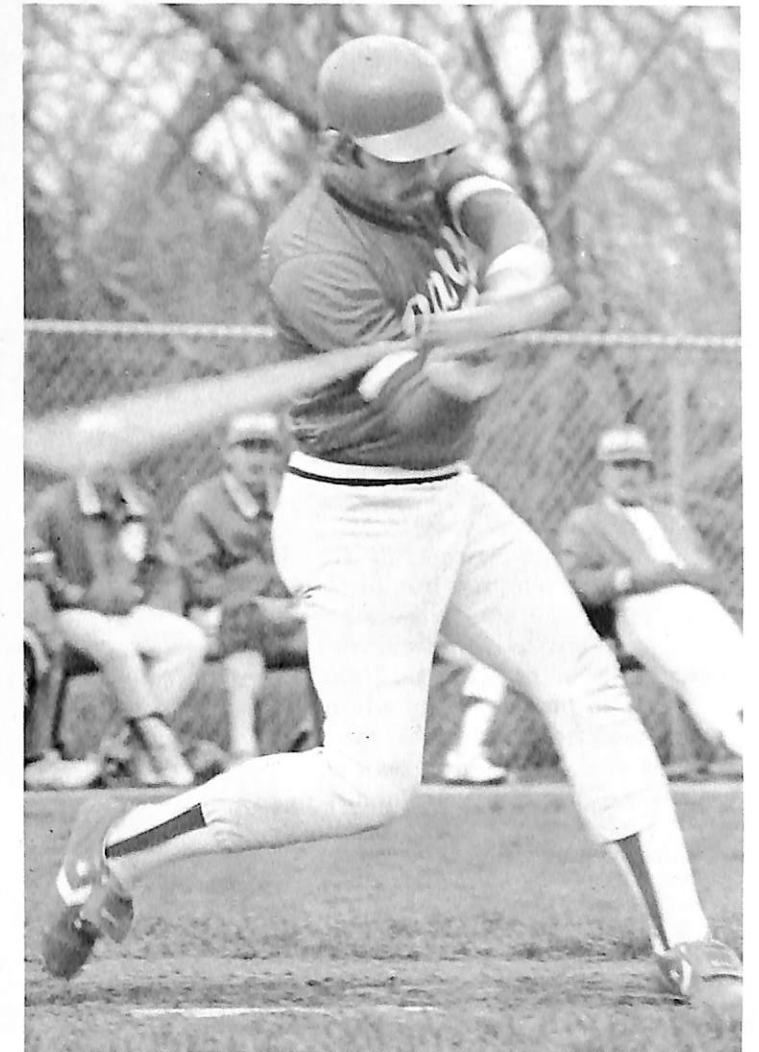
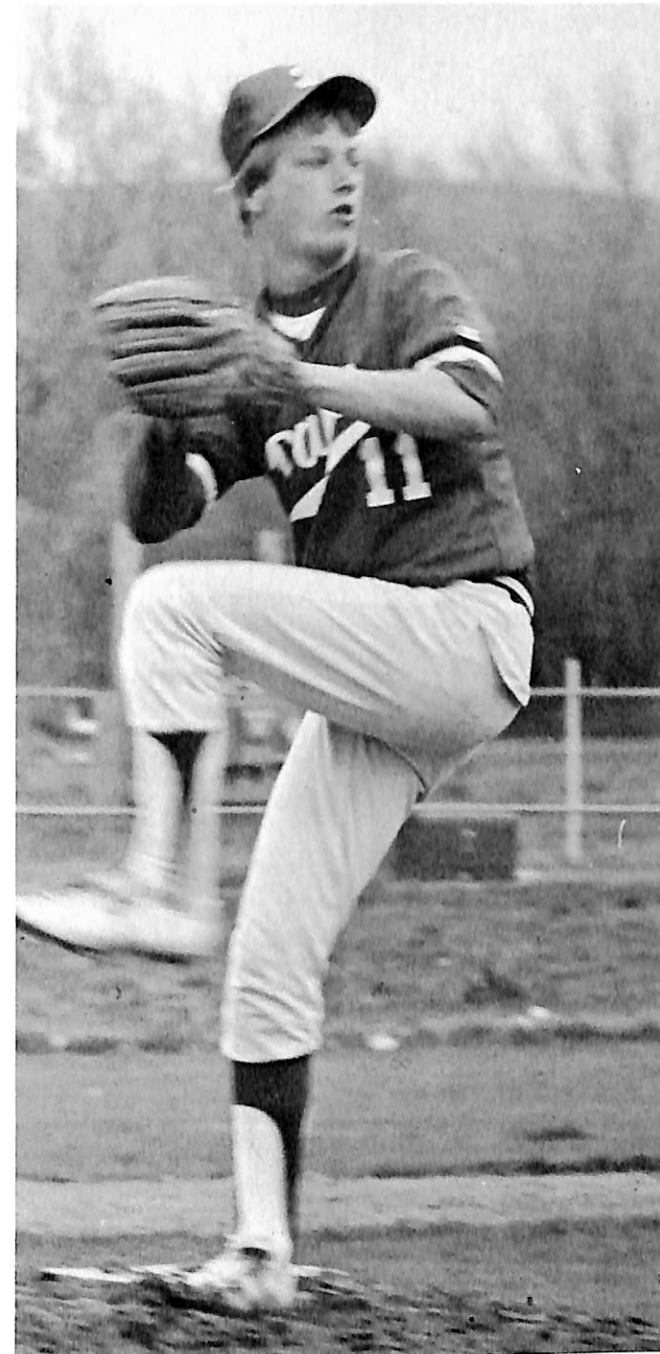




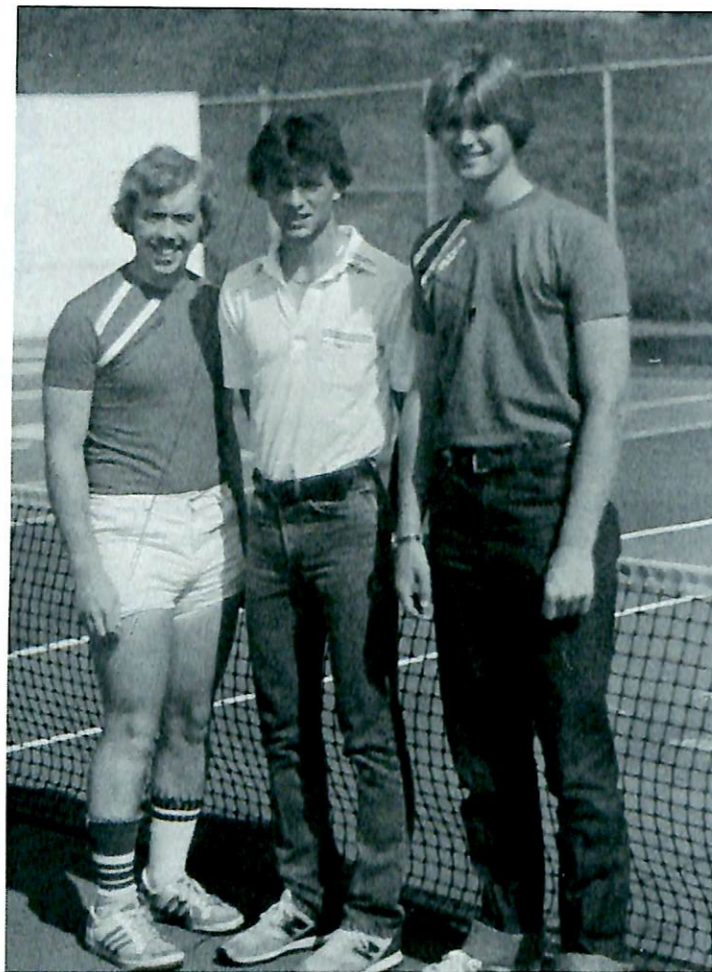
Baseball

The 1982 baseball season was Coach Dale Lemon's best ever with a record of 28-13 as Dana ended the year in the Co-conference championship spot. Don Anderson, Steve Apple, Brad Best, Kevin Fry, Robb Mowery and Lynn Petersen were all given All District Honorable Mention titles for their outstanding abilities while Don Savino also earned two new school records as well as receiving an Honorable Mention. Named to the NAIA First Team were: Dale DeBuhr, Jeff Ellis and Mitch Lane. DeBuhr, the team's senior catcher, was also named NAIA Player of the year and the team's Most Valuable Player.

1982 Dana College Baseball Team K. Amen, D. Anderson, S. Apple, B. Best, M. Bensen, D. Cook, A. Cue, D. DeBuhr, J. Ellis, D. Franklin, K. Fry, K. Hughes, T. Johnson, A. Kennedy, J. Lane, M. Lane, T. Law, B. Martin, R. Mowery, J. Peterson, L. Petersen, D. Savino, M. Seefus, M. Smith, M. Towne and Coach D. Lemon.

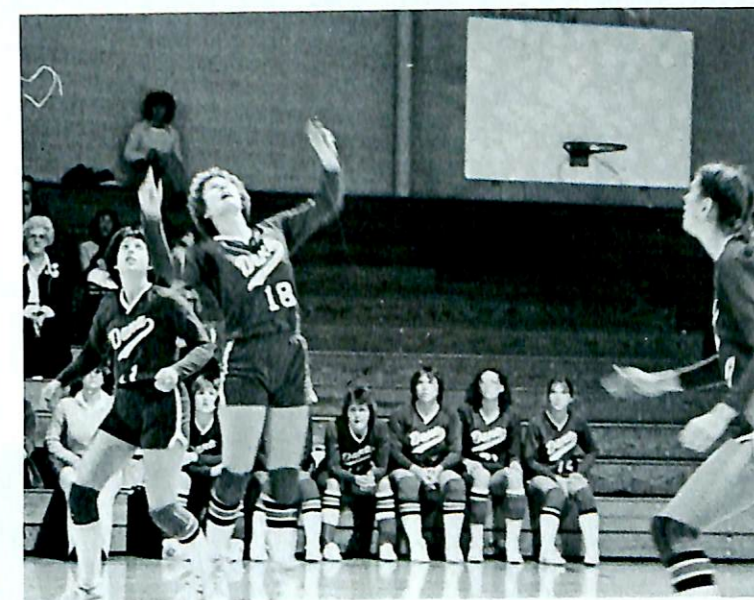
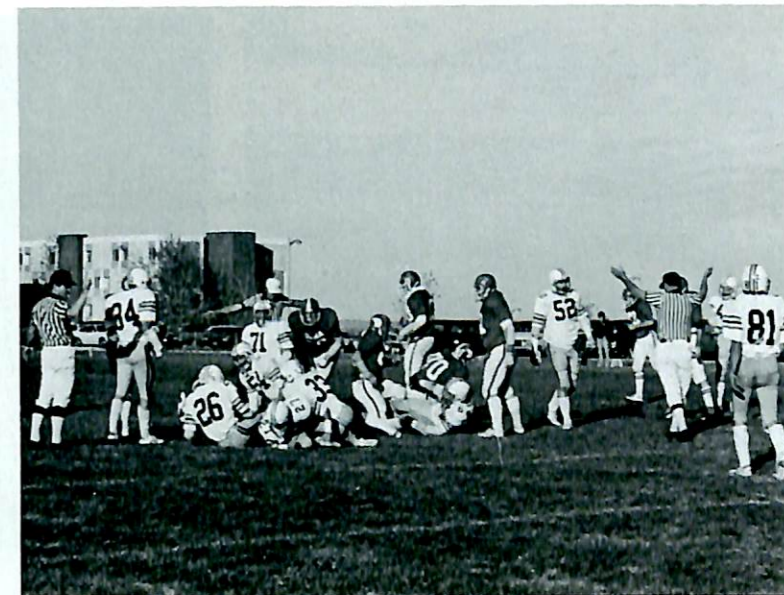
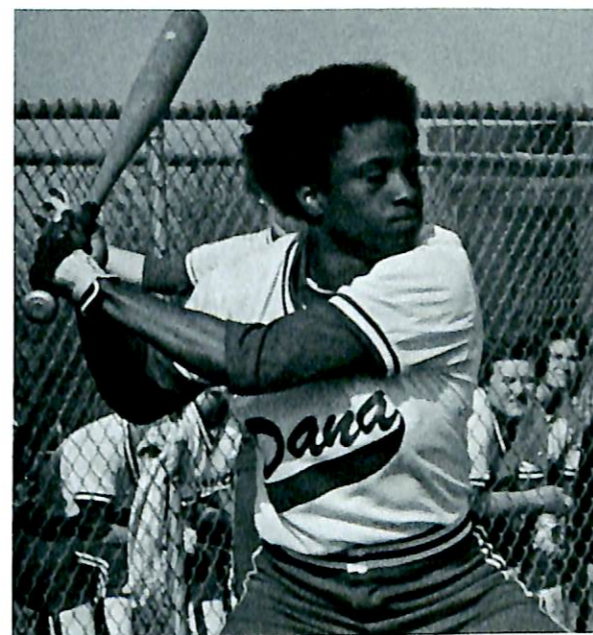


Tennis



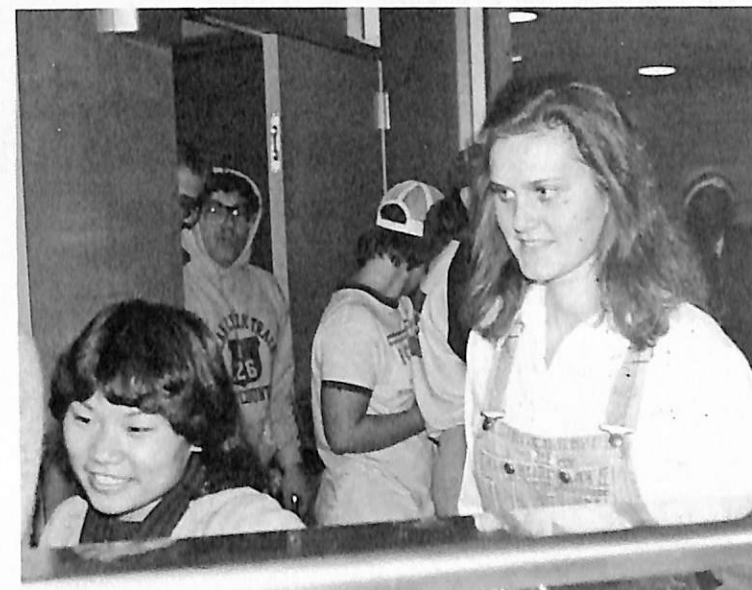
Dana Tennis continued in 1982 to build what four years ago was a desolate program. Though no team matches were won, individual victories were recorded in all matches but one. With 16 players, 12 of whom were women, out for the sport this year, Dana Tennis shows promise of growth and ability.

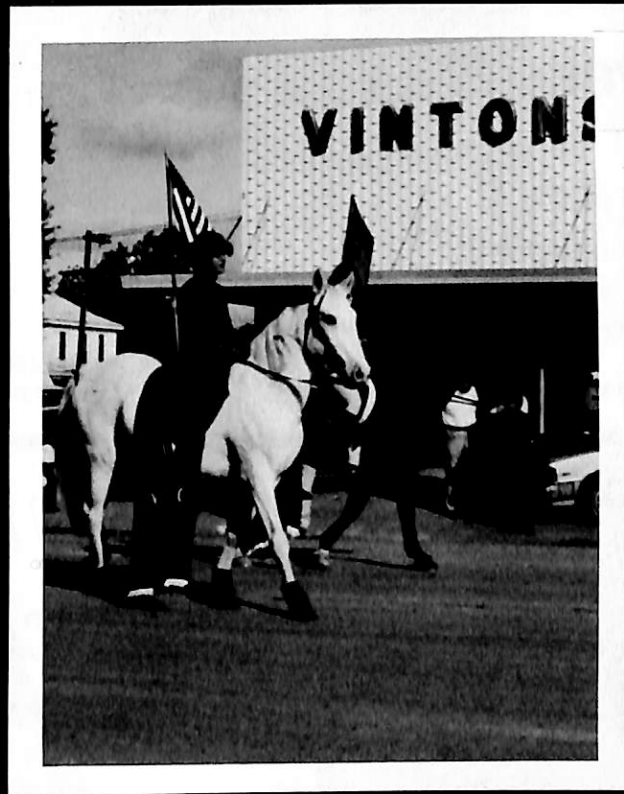
1982 Dana College Tennis Team. Above: Men: R. Danforth, S. Courtney and D. Wood. Not pictured: T. Swensen. Right: Women: V. McCoy, J. Jorgensen, K. Shutter, K. Hester, M. Frohs, J. King, and S. Swenker.





*Campus
Candid*





ADVERTISEMENTS



**BLAIR FLORIST AND
GREENHOUSE**
"Growing With Blair"

1711 Washington

426-3737

Wolff Jewelers

&

Goldsmiths



"Where Beautiful Jewelry Begins"
Downtown Blair

**BLAIR BOOK AND
SUPPLY CENTER**
Blair Plaza • Blair, Nebraska
Phone 426-4721

Coast to Coast

Bob, Dorothy & Mark Harrison
1737 Washington Street
Phone 426-3456
BLAIR, NEBRASKA 68008

COUNTRY CHEESE CORNER



1355 Washington

426-5121

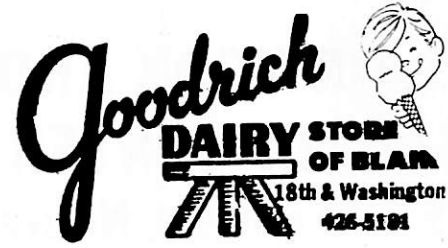
**CARNES PAINT
& DECORATING**
SALES & PAINT CONTRACTING

1635 Washington 426-2717



*The
Enterprise
Publishing
Co.*

Dana and Washington
County News Twice A Week.
16th and Front — Downtown Blair



Full Line Dairy Store
Plus Fountain

**Klopp Jewelry
& Gifts**
Downtown Blair



Dine In Or Carry Out

Hiway 30

426-4006



Blair Bank
F.D.I.C.

Dana College Has Our Support
Stop In and Visit With Us
About All YOUR Needs

Telephone 426-4111 - Washington at Nineteenth - Blair



washington county bank



15th & Washington

Each depositor insured to *20,000.



Hinky Dinky

*WE STAND
BEHIND
EVERYTHING
WE SELL*

9th & Washington

Blair Plaza



Sun-Thurs
11-11
Fri-Sat
11-1
Blair Plaza

DINE IN
OR
CARRY OUT

426-9696

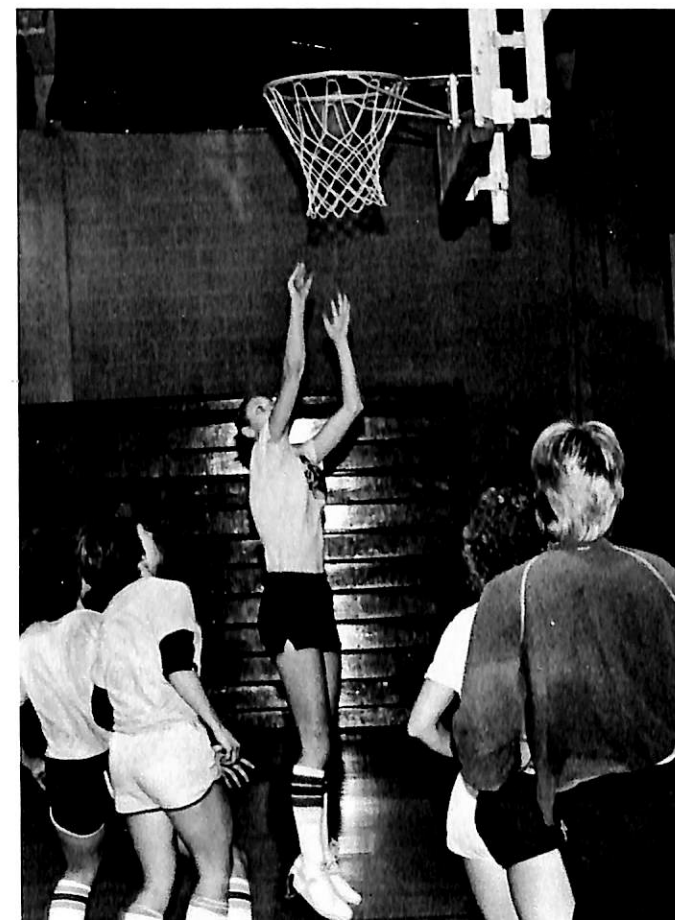
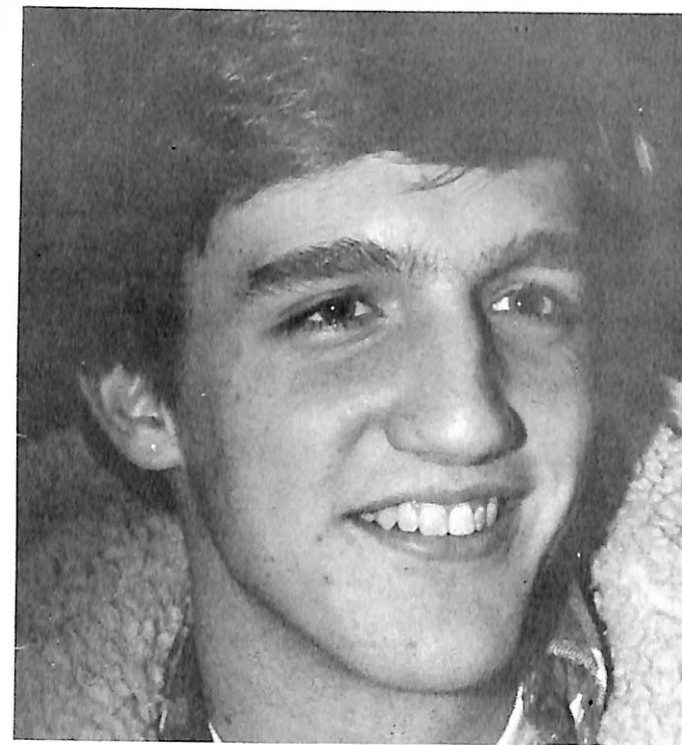
Carefree Travel Inc.

Phone 402-426-4118

1613 Washington Street, Blair, Nebraska 68008



Let Us Help
You With All
Your Travel Needs.



For Selection & Service
HAROLD'S R & J
DISCOUNT Liquors



234 South 8th, Blair Plaza Phone: 426-4915

VINTON MOTOR

Service After The Sale

54 Years In Blair

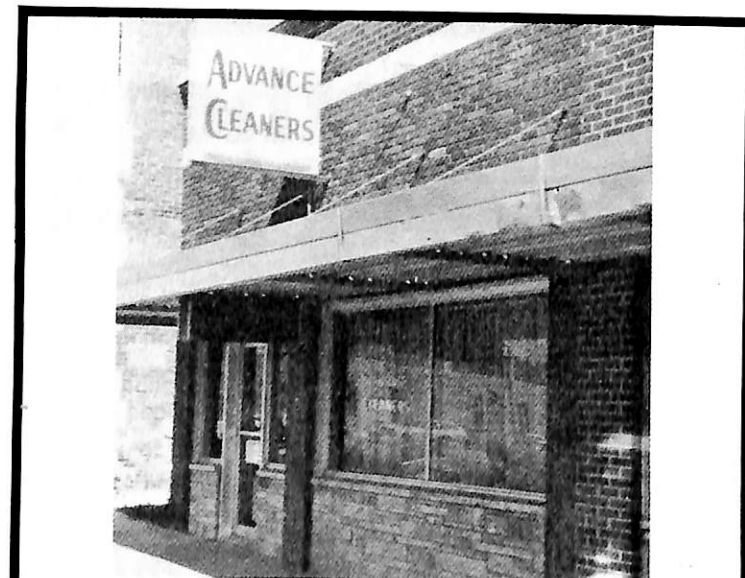
Blair Phone
426-4121

Omaha Phone
341-9390

Washington County Mutual Insurance Co.

Rose Brummer

Secretary/Treasurer



Blair, Nebraska

BEAR CARPET
Cleaning Systems

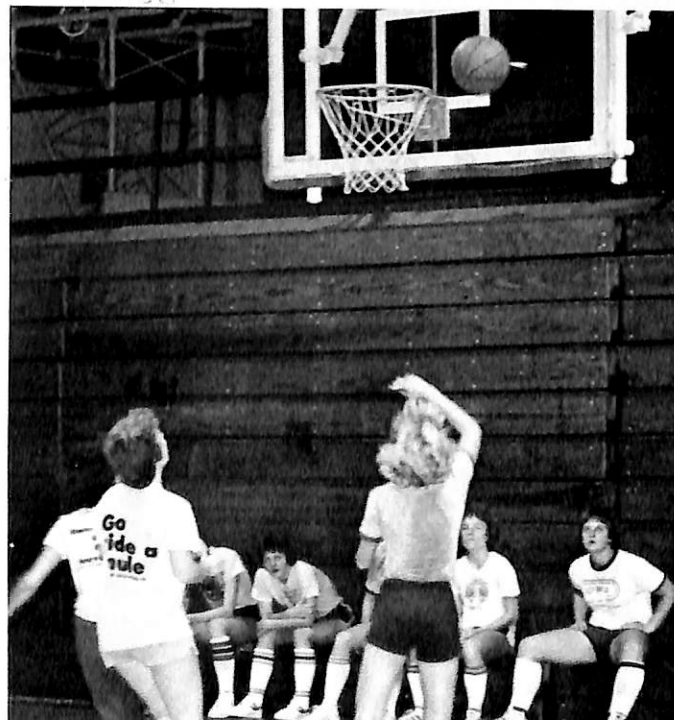
The Ultimate In Steam Cleaning
For Carpet And Upholstery



BARR'S
PHARMACY

1651 Washington

426-2187



A Thing Of Beauty

A Thing of beauty is a joy for ever:
 Its loveliness increases; it will never
 Pass into nothingness; but still will keep
 A Bower of quiet for us, and a sleep
 Full of sweet dreams, and health and quiet breathing.
 Therefore, on every morrow, are we wreathing
 A flowery band to bind us to the earth,
 Spite of despondence, of the inhuman dearth
 Of noble natures, of the gloomy days,
 Of all the unhealthy and o'er-darkened ways
 Made for our searching; yes, in spite of all,
 Some shape of beauty moves away the pall
 From our dark spirits . . .

— John Keats from Endymion

A Yearbook

Of all the endeavors I have ever undertaken this yearbook has presented by far the greatest challenge. My goal has been to create the perfect book. Since this is the first book I've ever edited, I've hardly known how to accomplish that goal. If I've succeeded it is because I have had a great deal of help from people who shared in my dreams for this yearbook. Special thanks go to those who made my dream come true:

— to Mickey Tanner for his fantastic cover design creates specially for this book on my impatient demand.

— to Deb Olson for her guidance (she taught me everything I know — about yearbooks) and for her assistance with the Senior section, and for her advice on the rest of this book,

— to Thomas Quale for his work on the Faculty and Administration section and for his sense of humor, however bizarre, which kept my creative cogs churning for a few more hours when I would have much rather punted the whole thing,
 — to Kevin Hernes who spent more time in OM's darkroom than he planned and who was far more patient with my demands for photography than I could ever hope,

— to Public Relations for their support, photographs, information, darkroom supplies (thanks Petel) and for their help in the most desperate stretches.

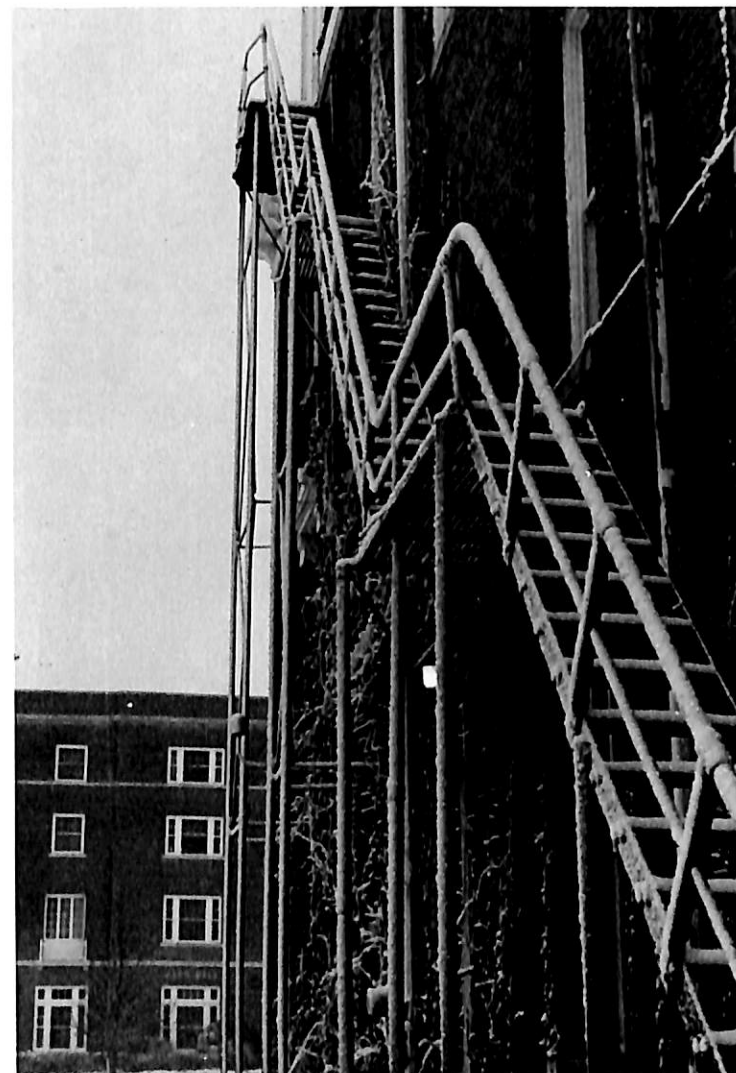
— to Lynne Ricks and Ellen Wilderson who provided friendship which put up with all my complaints and frustrations. Also to Ted Hanlon who turned out to be a real friend in need,

— to Student Senate and Dean David Martin for their support in fighting for improvements not only for the Danian but for all the campus publications,

— and lastly to Dr. J. Bienz, the Danian's advisor and to Mr. W. Jandrick of Josten's American Yearbook Company whose patience has far outlasted mine and whose guidance has been priceless.

Kerry J. Herp

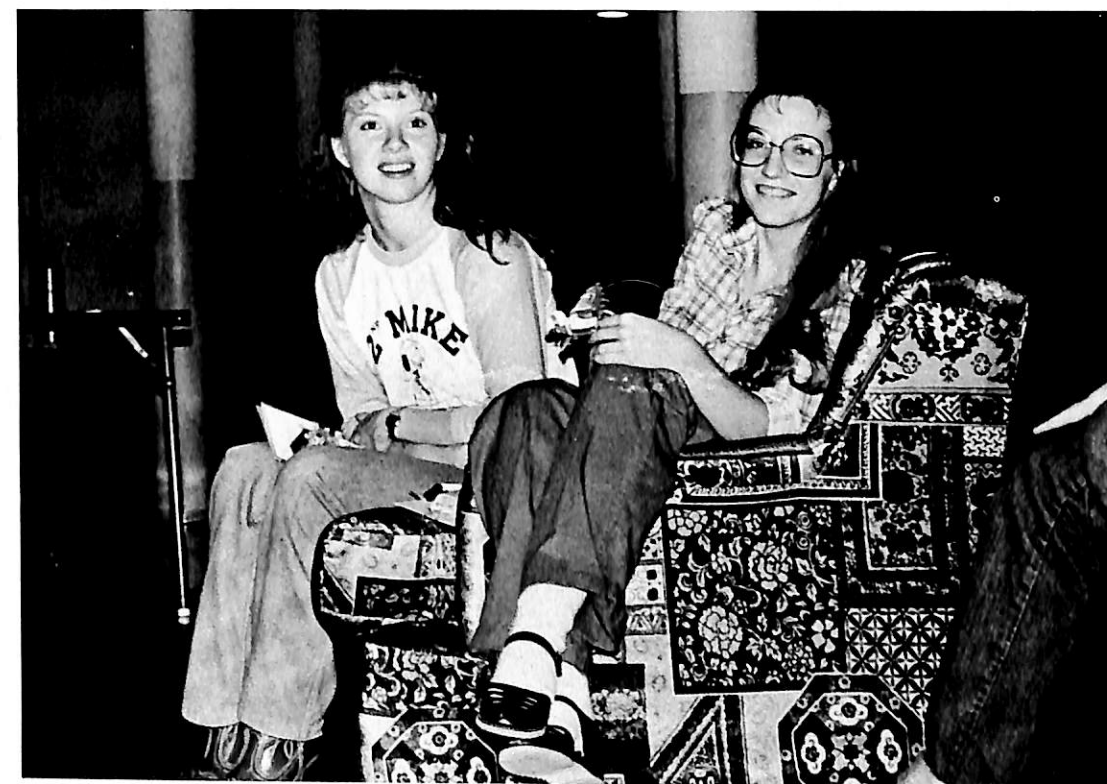
And when we launch our little barks



*As Ivies to
thy walls
do cling,
Our hearts
will cling
to thee.*



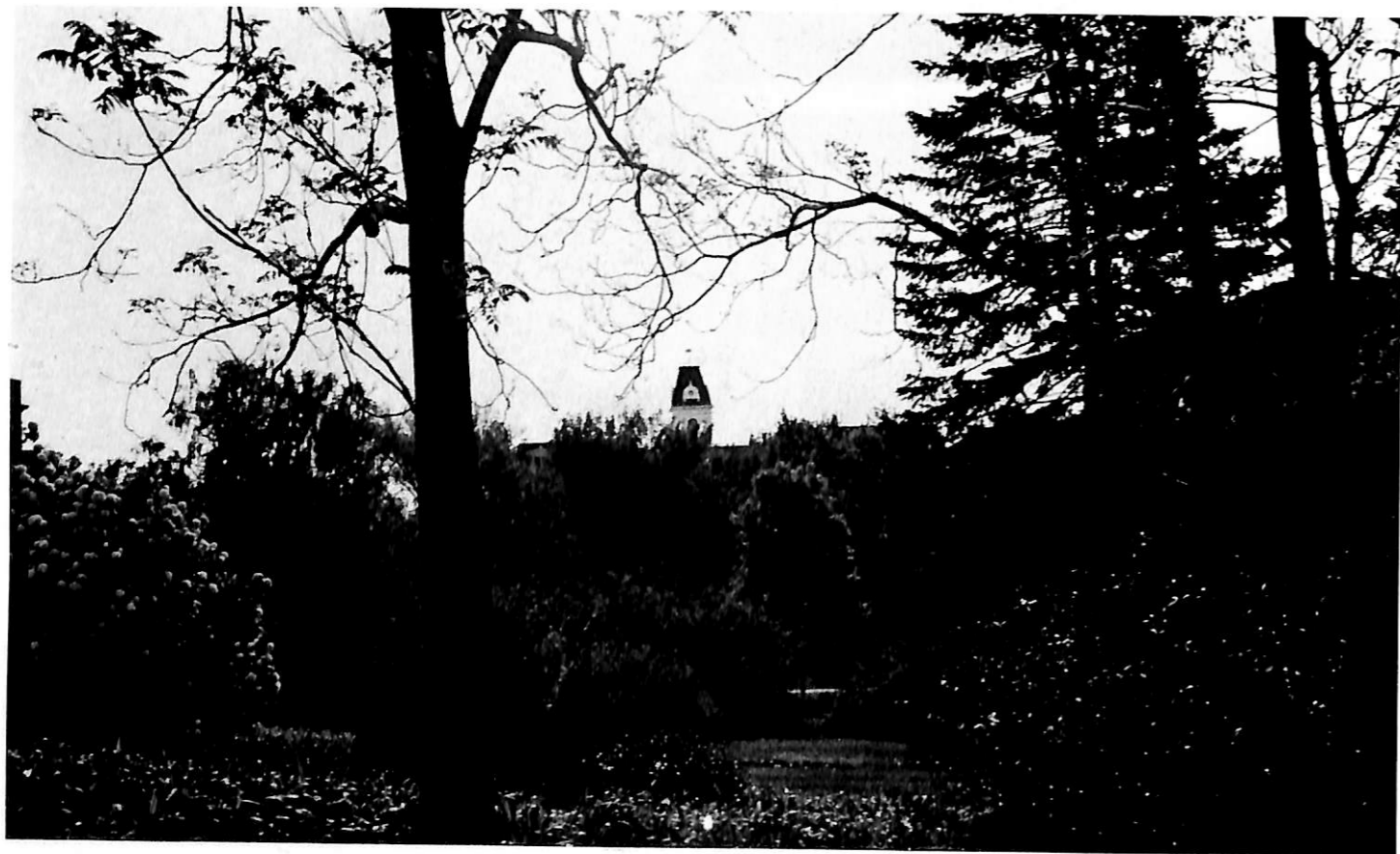
*on
Destiny's
deep
sea,*



*Oh hail
fair Dana,
hail
to thee!*



*Though time thy
walls may claim*

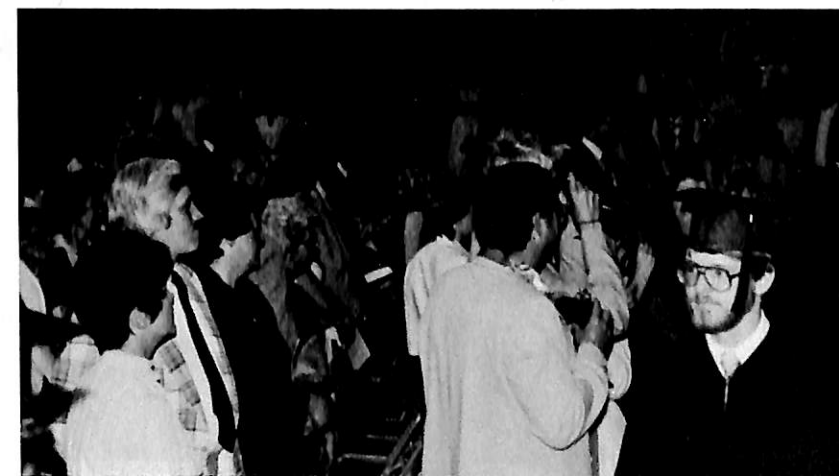
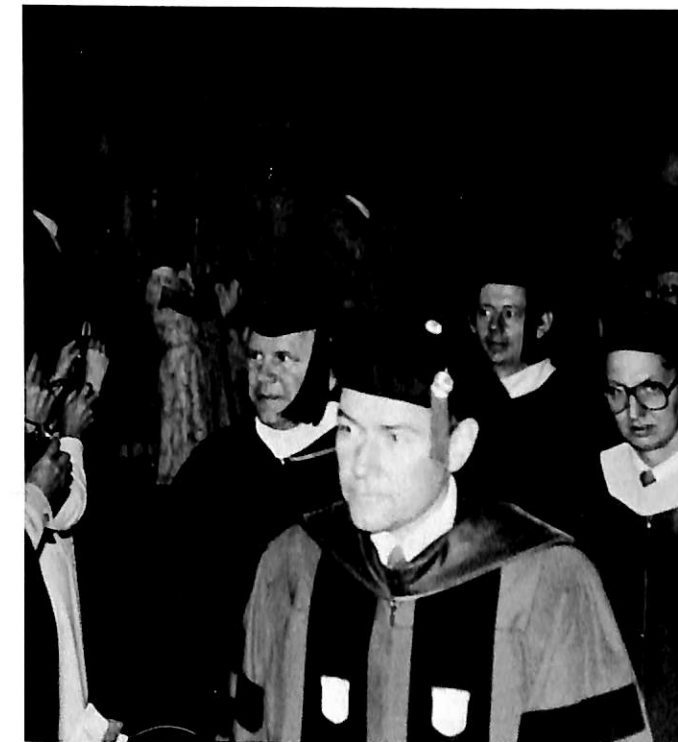
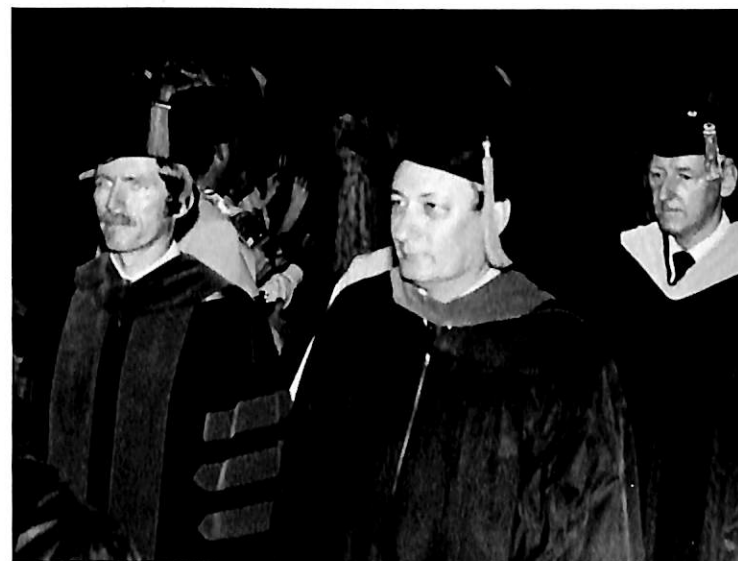


*Thy spirit live,
another throng*



*Rise up
and sing our song.*






Dana College

COMMENCEMENT

Sunday, May 16, 1982
Blair, Nebraska

