



Danish American
Archive & Library

Spring 2024

Jottings
NEWSLETTER

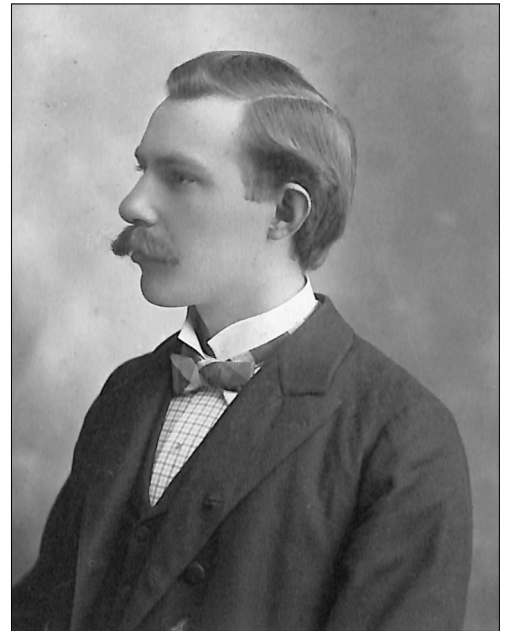
N. T. LUND—A DANISH IMMIGRANT'S LIFE

Nikolaj Thomsen Lünd, who went through so many name variations in his youth that he finally settled upon “N. T. Lund”, became a kind of Danish midwestern Everyman after immigrating to the United States in April of 1882 at the age of seven years. His life was touched by so many of the significant events of the age in which he lived that looking back on it provides a history lesson in itself. And that seems doubly appropriate, because he served as the head of Dana College’s history department from 1905 to 1915.

N. T. Lund was born in Varde, Denmark, on December 13, 1874, to Thomas Jorgensen Lünd, a farmer and blacksmith, and his wife Dorothea Marie Dam. In 1882, the family left Denmark to join four of Nikolaj’s siblings who had already settled in Minneapolis, Minnesota. Father Lünd thought he was purchasing tickets for one of the Cunard Line’s fast ocean liners in order to spare his wife’s health, but he had been swindled and instead found that he had booked passage on an old steamer that took twenty-one days to cross the Atlantic rather than the six-day cruise offered by Cunard. The family had to bring along their own food for the voyage. N. T. developed an ear infection that left him partially deaf in one ear.

After spending a year in Minneapolis, the Lunds left their older children to buy a farm near Gayville, South Dakota, in the general vicinity of Vermillion. There, a young N. T. was surprised and soon terrorized one day when a band of rough men knocked on the door of their house where they found only the boy and his mother, who did not yet have a good understanding of English. When the men threateningly demanded to be fed, Mrs. Lund pleasantly provided a feast and behaved so mildly and accommodatingly that the men were transformed into grateful guests instead and left in peace.

In 1888, the family moved to a farm just seven miles west of Vermillion, where thirteen-year-old N. T. was caught up, and nearly died, in the great Schoolhouse Blizzard of that year. Despite living less than a quarter-mile from the one-room schoolhouse and being carefully instructed by the teacher on how to make his way in stages first to a neighbor’s home, then on the rest of the way by hanging onto a fence, the boy was unable even to find the fence in the fierce storm. He was only saved by his older brother who discovered him clinging to a tree near their home. It took him several days to recover from his nearly frozen state.



N. T. Lund (circa 1905)

In 1890, he had an opposite experience, this time a large prairie fire that just passed by the Lund home only to lay waste to a neighbor’s land and livestock.

N. T. moved back to Minneapolis to live with his older sisters and attend the public schools there before moving on to Blair, Nebraska, in 1892. He attended Blair College for two years before getting his teacher’s certificate at Fremont College (Bachelor of Science degree) and then teaching in that area for seven years.

In 1898, he was offered a captaincy in the Spanish-American war but declined the position due to his mother’s ill health. After her death, he moved south to buy some land near Galveston, Texas, where he encountered his third disaster in the Galveston Hurricane of 1900.

In 1903, N. T. obtained a Bachelor of Arts in Classics and took a position at Luther College in Racine, Wisconsin, where he met and married Marie Hansen. He was disappointed in the position at Luther where he

had hoped to teach history. Leaving that position, he went into partnership in purchasing a book and stationery store in East Des Moines, Iowa. While there he received a letter from the Danish Publishing House in Blair inviting him to accept a position as head of the history department at Dana College.

Lund later counted his ten years of teaching history at Dana the happiest of his life, at the end of which he had a large and growing family and sought to increase his income. He was elected County Superintendent in 1915, a position he held until 1921.

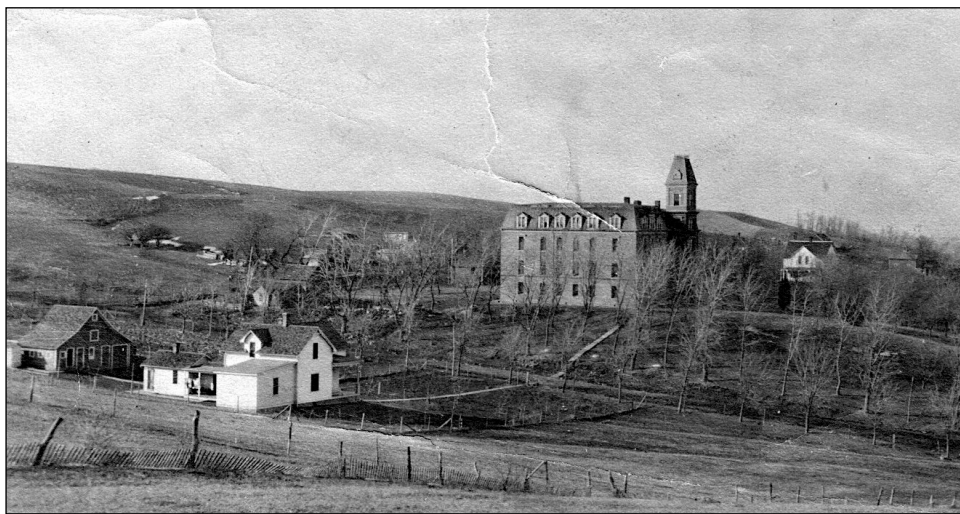
In the middle of his tenure as County Superintendent, World War I broke out. N. T. was appointed by Nebraska's governor to serve as Chairman of the Washington County Council on Defense. He reported his duties "...to keep peace in the county, to see that the funds were raised for various enterprises, and to see that all the land in the County was cultivated and put to crops. Of course, the main object was to guard against disloyalty." It was that last bit that brought him many interesting and potentially dangerous experiences.

On one occasion, two men came into his office and smilingly told him that a man was about to be lynched "on the bottom" (the low land of the Missouri River valley near Blair). The target of this action was to be an "insurance man from Omaha" who was said to have "said some things that were very disloyal." Lund investigated, found that the accusations were based on hearsay and that the man in question was far from being disloyal and, in fact, had an only son who was serving in the army. Taking the man outside in company with the county attorney, they were met by a mob of men ready to do injury to the suspect. But they were turned away peacefully by the words of the attorney.

Then there was the case of a farmer near Herman who was accused of flying a German flag. By this time, Lund had too much experience of such things and wrote a check for \$100, which he left with the County Treasurer, telling the accusers that the money would be theirs if they would produce proof of their accusation. No one claimed the check.

There were numerous such incidents during the war.

Resigning as County Superintendent in 1921, and with the adventures of public service during the Great War behind him, N. T. Lund went into the real estate and insurance business with a partner whom he soon bought out. The ensuing years of rural depression with the failure of four Blair banks, followed by the Great Depression of the 1930s, proved to be too much to overcome. In 1946, he sold the business and intended to retire.



Dana—Early 1900s, as N. T. Lund would have first known it

Public duty intervened again, however, as he was appointed Special County Judge to serve in place of the regular judge who had fallen ill and later died. Lund continued in that position until January 1, 1953, when, at age 78, he finally retired for good. He died suddenly at his home in Blair in 1959 at the age of 84.

Many photographs, letters and writings of and by N. T. Lund, including an autobiographical interview given to the Nebraska State Historical Society's library in 1955, which is the basis of this article, are contained in his collection at the Danish American Archive and Library in Blair. ■



Jill Hennick, Executive Director
1738 Washington Street, Blair, Nebraska 68008
Telephone: (402) 426-7910
E-mail: info@danishamericanarchive.com
Hours: 8am-3 pm, Monday-Friday

FROM THE DANA ROOM

The Liberal Arts Reading Program (LARP) at Dana College began in 1956 after faculty members discovered that most of them had “read about” many of the great books of the past but had not read the books themselves. This led Gordon Ferguson, chairman of the Modern Language Department, to suggest the faculty read the great books together with the students. A committee came up with this initial plan: 1. A student-faculty committee selects books for the next year based on nominations by members of the Dana community. (Selections can range from the “great” books to those by contemporary authors.) 2. A faculty member prepares a one-page discussion and assignment sheet and the short, objective tests that are given at the beginning of each session. 3. Each book is usually read over several sessions. 4. Groups of 12-14 students, with each group a cross-section of the student body, meet once a week from 9 to 9:50 a.m. on Thursdays. Students stay in the same group for the entire semester. 5. Faculty members are assigned to a different group each time. They administer the tests and guide the discussion. 6. Students, who are graded on the tests and participation in the discussion, earn one-half credit hour each semester. (At first all students participated in LARP, but it was changed so that only half of the student body participated each semester. To graduate, a student needed two credit hours in the program.)



Professor Gordon Ferguson leads a LARP group during the 1956-57 school year.

Over the years, hundreds of books were read. Occasionally the books were repeated. The one read the most was *The Prince* by Machiavelli (five times). Tied for second place with four readings each were *The Autobiography of Benjamin Franklin*; *1984* by George Orwell; and *Giants in the Earth* by O. E. Rolvaag. A sampling of the variety of titles can be seen on the following list of books that are missing from our collection.

Many faculty members and students remember the class fondly since it exposed them to books they otherwise might not have read and it was a campus-wide activity. However, the program did require hundreds of extra pages of reading and the burden on students and faculty eventually resulted in changes such as the addition of presentations and films.

Since 2014, Joan Krogh has been volunteering regularly at the Archive. She has done a variety of projects as she wrote in the Volunteer Spotlight article on page 5. In the past year she completed going through all of the documents we could find about LARP. First, she organized them by different categories such as committee meetings, syllabi, memos, rosters, book nominations, schedules, faculty assignments, individual book information and quizzes. Second, she put them in chronological order. And third, she eliminated extra copies.

Once the documents were finally in order we were able to compare the lists of books to the physical books on our shelves to see if any were missing. We hope you will go through the list and see if you have any of these that you can donate to help us complete our collection.

LARP books missing from our collection:

School year: 1956-1957

The Pilgrim's Progress by John Bunyan

School year: 1968-1969

The Way of Zen by Alan W. Watts

Scientific American Offprints by W.H. Freeman

School year: 1972-1973

Fires on the Plain by Ooka Shohie

School year: 1975-1976

All the President's Men by Carl Bernstein & Bob Woodard

School year: 1980-1981

The Great Gatsby by F. Scott Fitzgerald (also read in

2009-10)

Three Plays: The Father, Miss Julie Easter by August Strindberg

Bread and Wine by Ignazio Silone

School year: 1981-1982

Lord Grizzly by Frederick Manfred

School year: 1983-1984

Five Stories by Willa Cather

School year: 1985-1986

Crucibles: The Story of Chemistry by Bernard Jaffe

School year: 1991-1992

Incidents in the Life of a Slave by Harriet A. Jacobs

School year: 1993-1994

Letter from a Birmingham Jail by Martin Luther King, Jr.

Antigone by Jean Anouilh

School year: 1994-1995

The Tempest by William Shakespeare

School year: 1996 weekend

Hippolytus and Medea by Euripides

School year: 1999-2000

The Autobiography of an Ex-Colored Man by James Weldon Johnson

School year: 2000-2001

The Loneliness of a Long Distance Runner by Alan Sillitoe

School year: 2001-2002

A Thousand Acres by Jane Smiley

School year: 2002-2003

Beowulf translated by Seamus Heaney

School year: 2003-2004

Botany of Desire by Michael Pollan

School year: 2004-2005

Fast Food Nation by Eric Schlosser

The Hiding Place by Corrie Ten Boom

School year: 2005-2006

Nickeled and Dimed by Barbara Ehrenreich

The Kite Runner by Khaled Hosseini

School year: 2006-2007

No list of the books read, so we don't know if any are missing.

(We have *Inside the Kingdom*, *The Liar's Club*, *Bee Season*, *All's Quiet on the Western Front*, *Drinking* and *On the Road* from that year.)

School year: 2008 summer

Life of Pi by Yann Martel

Whale Rider by Witi Ihimaera

School year: 2008-2009

No list of the books read, so we don't know if any are missing.

(We have *Mountains Beyond Mountains*, *Breakfast at Tiffany's*, *Season of Migration to the North*, *The Picture of Dorian Gray*, and *Passing* from that year.)

School year: 2009-2010

My Sister's Keeper by Jodi Piccolt

The Great Gatsby by F. Scott Fitzgerald (also read in 1980-81)

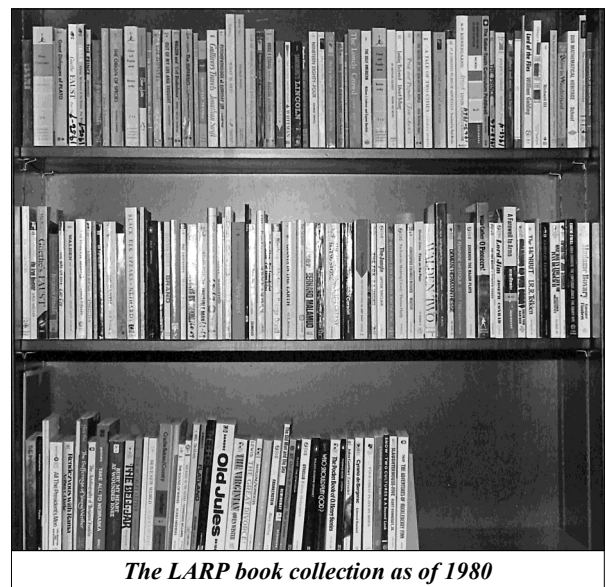
The Road by Cormac McCarthy

The Time Machine by H.G. Wells

Devil's Highway by Luis Alberto Urrea

We have quizzes and summaries for a majority of the books. We are missing about 10 from years prior to 2000, and 34 for years 2000-2010. If you have any documents about LARP books that you would like to donate, please let us know. ■

[The first paragraph is summarized from *LARP Is Alive and Well and 25 Years Old* published in the Winter 1980 Dana Review.]



Sorting and organizing is a lot of what we do here at the Archive. If you have a Dana connection and want to see what it is like to volunteer here, we are setting aside June 18, 19 and 20, 2024 for "Dana Work Days". One major task will be trying to identify photos – both the subject matter and the people in them. And, speaking of sorting papers, maybe it's time to tackle another campus-wide class...Humanities...■

VOLUNTEER SPOTLIGHT

by Joan Krogh

Without knowing what I might be getting myself into, eleven years ago I volunteered to help at the Danish Archive and Library.

Among the wide variety of things housed in the archive are multiple filing cabinets rescued from Dana College when it was abruptly forced to close on June 30, 2010. Those cabinets hold folders of records, correspondence and more (thousands of pages) that needed to be sorted so those wishing information about specific topics could find it. Sorting the contents of file folders has been my task.

Among older folders were copies of letters from President Richard Morton (late 1950s) and President C. C. Madsen (1960s) thanking donors for their gift. These were usually small amounts; some were for \$2.00. Money was scarce for most folks in those years.

When Dr. Madsen decided to retire, a number of people sent letters recommending Dr. Earl Mezoff as his successor. A few years later when Dr. Mezoff left, letters arrived recommending Dr. James Kallas. About 5 years later more letters came, recommending Dr. Myrvin Christopherson, with many more letters filling more folders.

Sorting programs for special events held on Dana's campus brought back many memories: graduations, Homecomings, Sights and Sounds of Christmas, choir and band concerts, student recitals and others. The graduation on May 26, 1976 was extra special because Queen Margrethe II of Denmark came and spoke. The ceremony was held outside on the campus to accommodate many dignitaries, plus an enormous crowd. The dedication of the new Classroom Center and Trinity Chapel during Homecoming 1994 was also extra special. The new building was a beautiful addition to the campus, but we still wish Old Main had survived.

Other files hold financial records. In older files all numbers were neatly penned, years before calculators made the job simpler. Impressive to read, but poignant because of Dana's demise.

Other files hold financial records. In older files all numbers were neatly penned, years before calculators made the job simpler. Impressive to read, but poignant because of Dana's demise.

A very large collection was given to Dana College by Lauritz Melchior, the world famous Danish opera star from the 1920s through the 1950s and later. Mr. Melchior presented a concert at Dana in the 1940s; and when the Dana choir was on tour in 1965, he hosted them at his home in Los Angeles, further cementing his relationship with the college. A very large and important eastern university had hoped to inherit Melchior's extensive collection, but he chose to send it to Dana College. Several boxes contained thousands of fan letters which took four of us volunteers many hours to sort.

Mr. Melchior served as president of the Danish Royal Life Guards. Many of the Guards came to the United States while others settled in eastern and western Canada; Mexico City; Montevideo, Uruguay; Buenos Aires, Argentina; Australia and elsewhere. Special events were held periodically to help keep a strong connection between those men, in spite of their emigrating far from their homeland. That meant much correspondence with Melchior, mostly written in Danish. Several folders held correspondence from the 1960s with Betty Smith. Mr. Melchior established the Heldenentor Foundation through The Juilliard School of Music in New York City to train future heldententors, and Mrs. Smith handled what needed to be done with Juilliard.

There are newspaper articles, professional photographs and loads of snapshots to sort which Dana graduates help identify. It's too bad that names, dates and occasions hadn't been written on the back.

There have been stacks of paper to sort. Many contain minutes of multiple faculty meetings and student organizations; some dealt with serious student problems. Now those stacks have been put into various categories and are available for research. Likely there will be more.

From the beginning, Tuesday mornings at the archive have been enjoyable, especially as I came across familiar names from my years as a Dana student (long ago). Those names revive memories of many of the best times of my life. ■



DIRECTOR'S REPORT

by Jill Hennick, Executive Director

I'm delighted to report that working together we've ended 2023 in the black. Because of your sustained support, we've been able to do that every year since becoming an independent 501(c)(3) charitable corporation in 2010.

Through all the years it has been a team effort. We haven't relied solely on a "star player" to sustain us. Whether it be financial donations, volunteering or planning an event, when one of us can't come through at the same level as in previous years, another one of us has stepped up to fill the position. None of this is planned, but by working together, we've been able to sustain our Archive long-term.

This year we've been deeply touched by our friends who included the DAAL in their estates. Three large estate donations overcame any threat of a deficit in 2023. We are so grateful that they generously made provisions for the Archive's future.

I also thank the board for preparing responsible budgets and keeping the spending within these budgets. Their prediction for 2023 was almost exact – we were under the budget by just \$244.51! With the rising costs we are all noticing, the board predicts that the cost for the same budget items in 2024 will increase by \$5,000.

The budget covers the cost for:

- Acquiring, processing and preserving collections of archival and library materials documenting the experiences and contributions of Danish immigrants and their descendants to American life;
- Maintaining the building at 1738 Washington Street to provide climate-controlled storage for our collection and to provide work areas for visitors, researchers and volunteers;
- Digitizing documents and working with databases to make the archival materials available for research both remotely and in-house;
- Describing and interpreting the Danish American experience for a general audience through books, newsletters and exhibits.

We would see only a small amount of progress in any of these four areas if it wasn't for the dedication and efforts of our volunteers and donors.

The budget doesn't cover every need that arises, so donors also give in different ways:

- Some people make restricted gifts which are designated for the endowment fund. These form the principal, which is never used, on which investment income is earned.
- Some donors have specifically given funds for volunteer recognition. When we treat the volunteers to a meal during volunteer week, that does not come out of budget funds. Or, as I like to say, "We don't use your donations to throw parties!"
- Occasionally donors have made matching funds available to encourage other people to give. Frugal Danes often give more when they know the Archive will receive double the amount. If you have any interest in providing matching funds, please let me know by September 1, so we can devise a plan to use the funds wisely and to our greatest advantage.
- Another way we have been able to do some extras is through sales of Danish American Commemorative Wall panels. I'm happy to report that five more panels are being worked on. It's a joy to see the exhibit grow and to be able to read about more Danish American lives. Funds from this project have enabled us to add a moveable shelving unit and to upgrade our work areas with new furniture and technology.

The archive is thriving because it is made up of a dedicated group that believes preserving Danish American history is important and that the lives of our ancestors and their accomplishments can provide valuable information to future generations. Thank you for joining us in these efforts. ■



*Executive Director
Jill Hennick*

VOLUNTEERS: 826 hours by 26 volunteers from Illinois, Iowa, Nebraska and Ohio
VISITORS: 71 visitors from Arizona, Illinois, Iowa, Nebraska, Ohio, South Dakota, Washington, Argentina and Denmark
USERS: 42 researchers from California, Colorado, Illinois, Indiana, Iowa, Kansas, Michigan, Minnesota, Missouri, Nebraska, New Hampshire, New Jersey, South Carolina, South Dakota, Tennessee, Texas, Wisconsin, Argentina, Canada, Denmark and email/phone/Facebook

ACQUISITIONS

Materials

The Archive could not continue to document the history of Danish Americans without these wonderful materials including complete family collections, photos, books, periodicals, music and obituaries. We appreciate your financial donations to support the processing and storage of your materials.

Betsy & Bill Anderson (Blair, NE)
 Fran & Al Anderson (Omaha, NE)
 Pat Bentsen (Blair, NE)
 Signe T. Betsinger estate
 Lois & Larry Bornemeier (Waukesha, WI)
 Diane Burbey (Mukwonago, WI)
 Marie Campilongo (San Diego, CA)
 Deborah Henningsen Cassel (Bettendorf, IA)
 Borge M. Christensen estate
 Rolf Buschart Christensen (Ontario, Canada)
 Myrv Christopherson (Decorah, IA)
 Julienne Ferry (Harlan, IA)
 Chris Gehringer (Omaha, NE)
 Michael & Jill Hennick (Blair, NE)
 Jan Holmstrup (Annandale, NJ)
 Cedar Falls Historical Society (Cedar Falls, IA)
 Jane Jensen (Plainview, NE)
 Rich & Pat Jorgensen (Blair, NE)
 Joan Krogh (Blair, NE)
 Annette Lind (Wauwatosa, WI)
 Brian Lunn (Upsala, MN)
 Betty Megrue (Blair, NE)
 Linda Karen Miller (Hendersen, NV)
 Shirley Moore (Blair, NE)
 John Mark & Dawn Nielsen (Blair, NE)
 John W. & Elizabeth Nielsen Family
 Liv Paulson Norderhaug (Chanhassen, MN)
 Carol Petersen (Lincoln, NE)
 Noel & Ruby Petersen (Omaha, NE)
 Sandy Sonderup (Blair, NE)
 Martha Stone (Providence, RI)
 Starla Sweda (Selma, TX)

FINANCIAL REPORT

Memorials

Gudrun Andreasen
 Allen Andreasen (Nashotah, WI)
 Ann Bansen
 Myrv Christopherson (Decorah, IA)
 Joan Krogh (Blair, NE)
 John Mark & Dawn Nielsen (Blair, NE)
 Alice Marie Bartlett
 Larry & Palma Plume (Evergreen, CO)
 Christopher Bohs
 Chris Bohs family
 John Mark & Dawn Nielsen (Blair, NE)
 Alta Bollhoefer
 Larry & Palma Plume (Evergreen, CO)

Anne Christopherson
 Dorothy Olson (Blair, NE)
 Tom Dein
 Randy & Lynda Truhlsen (Blair, NE)
 Clifford K. & A. Veola Hansen
 James & Annette Brown (Mishicot, WI)
 Eleanor Anderson Hansen (102)
 Karen Hansen (Omaha, NE)
 Gary F. Hansen
 John Mark & Dawn Nielsen (Blair, NE)
 Ramsus Peter Hansen
 Larry & Palma Plume (Evergreen, CO)
 Helga Hanson
 Pat Bentsen (Blair, NE)
 Erna Berthelsen (Albert Lea, MN)
 Myrv Christopherson (Decorah, IA)
 Michael & Jill Hennick (Blair, NE)
 The Nis & Irene Jessen family
 Dave & Barb Kreye (New Richmond, WI)
 Florence Larsen (Blair, NE)
 John Mark & Dawn Nielsen (Blair, NE)
 Linda Pedersen (Omaha, NE)
 Eldon & Nancy Rowlett (Lodgepole, NE)
 Sandy Sonderup (Blair, NE)
 Verlan Hanson
 The Nis & Irene Jessen family
 Arvin Hernes
 Dorothy Olson (Blair, NE)
 Alvina Hjortsvang
 John Mark & Dawn Nielsen (Blair, NE)
 Richard Hunt
 Myrv Christopherson (Decorah, IA)
 Dody Johnson
 John Mark & Dawn Nielsen (Blair, NE)
 David J. Knutson
 John Mark & Dawn Nielsen (Blair, NE)
 Frank Korshoj
 John Mark & Dawn Nielsen (Blair, NE)
 Bee Krantz
 Agneta Gaines (Omaha, NE)
 Bob Krogh
 Dorothy Olson (Blair, NE)
 Phyllis Kloster Krumrey
 Dwayne Olsen (Prior Lake, MN)
 Dr. C. C. & Esther Madsen
 Lowell & Sue Madsen (Fresno, CA)
 Paul Madsen
 John Mark & Dawn Nielsen (Blair, NE)
 Sandy Sonderup (Blair, NE)
 Eileen Jorgensen Mattox
 Don Mattox (Sheboygan, WI)
 Andrea Neve
 Leon & Alice Neve (St. Paul, MN)
 John W. & Elizabeth Nielsen

John & Beth Fredlund (Anoka, MN)
 Myrna Kloster Olsen
 Dwayne Olsen (Prior Lake, MN)
 Roger Olson
 Dorothy Olson (Blair, NE)
 Phil Pagel
 Agneta Gaines (Omaha, NE)
 The Hans K. Pedersen Family
 Kent & Ann Lynch (Edwards, IL)
 Rhoda Schjodt
 Dorothy Olson (Blair, NE)
 Ardyth Kloster Schultz
 Dwayne Olsen (Prior Lake, MN)
 Martha Staby
 John Mark & Dawn Nielsen (Blair, NE)
 Arlene Stork
 Cheryl & Kevin Dunbar
 Kenneth Truhlsen
 Joyce Gauck (Plymouth, MN)
 Joan Krogh (Blair, NE)
 David & Carol Kuhr (Platte City, MO)
 Lorene Larsen (Omaha, NE)
 Gary & Diane Madsen (Omaha, NE)
 Sandra McMullen (Tekamah, NE)
 David & Renee Sheets (Blair, NE)
 Kenneth Truhlsen family
 Greg Witte
 John Mark & Dawn Nielsen (Blair, NE)
 Patty Dein Wright
 Randy & Lynda Truhlsen (Blair, NE)
Honoraria
 Eben Ezer Lutheran Church 120th anniversary
 Sol Mockicin (Oaks OK)
 Lorraine Jensen
 Bill & Betsy Anderson (Blair, NE)
 Joel Jorgensen
 Sol Mockicin (Oaks OK)
 Richard Jorgensen
 Sol Mockicin (Oaks OK)
 Ned Kitomari for African Leadership
 Myrv Christopherson (Decorah, IA)
 Joan Sorensen
 Mike & Karen Brodie (Richardson, TX)
 Janet & Chuck Kahn (Gulf Breeze, FL)
 Kathy & Duncan Meldrum (Mertztown, PA)
 Sarah Meldrum (Mertztown, PA)

Endowment Fund

Schwab Charitable Fund by Keith & Paula Anderson for the Martin & Else Andersen Memorial Fund
 Thomas Bengtson (Rock Island, IL) for the Deloris Hansen Bengtson Memorial Fund

General Fund

All donations are placed in the General Fund unless otherwise specified. Those who give through the 50/100 Club are listed in each issue of Jottings.
 Gary & Cindy Larsen Adams (Littleton, CO)
 Allan & Fran Anderson (Omaha, NE)

FINANCIAL REPORT (continued)

Assured Life Association (Centennial, CO) by Myrv Christopherson
 Timothy Barnes (Omaha, NE)
 Lori & Kevin Bayne (Omaha, NE)
 Benevity Impact Fund by Lori & Kevin Bayne
 Susan Bennerotte (Maryville, MO)
 Marcia Bergmeyer (De Witt, NE)
 Erna Berthelsen (Albert Lea, MN)
 Deborah Biorn (Saint Cloud, MN)
 Egon & Diana Bodtker (Junction City, OR)
 Carol Bogacz (La Vista, NE)
 Larry & Lois Bornemeier (Waukesha, WI)
 John Braunhold (Chicago, IL)
 Judy Brehm (Blair, NE)
 Frida Brewer (Lampasas, TX)
 Steve & Connie Buller (Blair, NE)
 Lois Olson Burkholder (Shakopee, MN)
 Sondra Carver (Decorah, IA)
 Borge M. Christensen estate
 Joyce E. Christensen (Omaha, NE)
 Vaughn Christensen (Blair, NE)
 Paul & Leana Christoffersen (Underwood, IA)
 Myrv Christopherson (Decorah, IA)
 Nisse Christopherson (Des Moines, IA)
 Sal & Pam Ciulla (Bellevue, NE)
 Mary E. Cowling (Bethlehem, PA)
 Verla & Jack Cramer (Gold Canyon, AZ)
 Anne-Marie Douglas (Chicago, IL)
 Don & Anne Eppley (Omaha, NE)
 Lyle & Dorothy Feisel (Chestertown, MD)
 Diane Fitzsimons (Phoenix, AZ)
 Barbara & Dennis Garrett (Blair, NE)
 Joyce Gauck (Plymouth, MN)
 Christie Gehringer (Omaha, NE)
 Milbern & Kathy Goetz (Greeley, CO)
 Berniece Grewcock (Omaha, NE)
 Esther Grindberg (Circle Pines, MN)
 Cynthia Gunderson (Elgin, IL)
 Linda Hall (Cedar Falls, IA)
 Christy Hansen (Des Moines, IA)
 Charles E. Hansen (Mt. Prospect, IL)
 Frederick "Fritz" J. Hansen estate
 Erik & Greta Hansen (Racine, WI)
 Joe H. & Rose Jean Hansen (Des Moines, IA)
 Kay Hansen (Minneapolis, MN)
 Kenneth Hansen (Blair, NE)
 Larry & Sandra Hansen (Fremont, NE)
 Lucy Hansen (Tipton, IA)
 Kristie Hansen-Mendez (Chicago, IL)
 Mark Hennick/Plum Design (Kansas City, MO)
 Michael & Jill Hennick (Blair, NE)
 Larry & Kathy Henning (Middleton, WI)
 Mary Henriksen & Alan Hanson (Omaha, NE)
 Carol Haussermann (Blair, NE)
 The David & Polly Hendee Charitable Fund of the Omaha Community Foundation
 Karen Hoyle (St. Paul, MN)
 Suellen Hudson (Pensacola, FL)
 Ron & Rikki Hulsebus (Omaha, NE)
 Ingham-Okoboji Ministry (Milford, IA)
 Fred & Dawn Jensen (Minnetonka, MN)
 Ken & Bonnie Jensen (Albert Lea, MN)
 Lynda Jeppesen (Oak Park, IL)
 Karen Jessen (Waterloo, IA)

Michelle Johns (Spearfish, SD)
 Kevin & Kari Jo Johnson (Omaha, NE)
 Niel Johnson (Independence, MO)
 Paul & Liz Johnson (Loveland, CO)
 Lori Jones (Texarkana, TX)
 Alice M. Jorgensen estate
 Dorothy Jorgensen (Bemidji, MN)
 Lis Jorgensen (Minneapolis, MN)
 Richard & Pat Jorgensen (Blair, NE)
 Gladys Kempe (Tustin, CA)
 Ramona Klaasmeyer (Omaha, NE)
 Richard & JoAnn Kleber (Northfield, MN)
 Karen Knudsen (Ogallala, NE)
 Marty & Linda Koefoed (Missouri Valley, IA)
 Jari Kolterman (Littleton, CO)
 Ruth Krishnan (Towson, MD)
 Joan Krogh (Blair, NE)
 Lee Anne Lack (Montrose, MN)
 Charles Lang (Orlando, FL)
 Mark & Lynn Langenfeld (Monticello, WI)
 Florence Larsen (Blair, NE)
 Keith & Lori Larsen (Blair, NE)
 Liz Larsen (Cupertino, CA)
 Lorene Larsen (Omaha, NE)
 Bill & Toni Lawson (Green Bay, WI)
 Annette Lind (Wauwatosa, WI)
 Gary & Diane Madsen (Omaha, NE)
 Ruth McMaster (Omaha, NE)
 Patricia Miller (Crawfordsville, IA)
 Dale & Ruth Mortensen (North Olmstead, OH)
 William C. Nelsen (St. Peter, MN)
 Kaj Neve (New York, NY)
 Leon & Alice Neve (St. Paul, MN)
 Cheryl Nielsen (Harlan, IA)
 Lisa Nielsen (Fairfield, PA)
 Ron & Kathie Nielsen (Mahtomedi, MN)
 Folmer & Vera Nyby (Michigan City, IN)
 Jim & Sue Olsen (Blair, NE)
 Phil Panum (Englewood, CO)
 Beth Paulsen-Olmstead (Westbrook, ME)
 Duane Pedersen (Ames, NE)
 Dixie Petersen (Wichita, KS)
 Eric Petersen (Mission, KS)
 Greg & Kathy Petersen (Tampa, FL)
 Julie Petersen (Lincoln, NE)
 Noel & Ruby Petersen (Omaha, NE)
 Shirley Petersen (Canyon, TX)
 Collyn Peterson (Overland Park, KS)
 John E. Peterson (Pottstown, PA)
 Carol Prussa (Kearney, NE)
 Carl L.M. & Nancy Rasmussen (Sugar Grove, IL)
 Nita Richards (Omaha, NE)
 Barb & Jim Rinell (Urbandale, IA)
 The Moses & Emily Margritt Rodriguez Fund of Schwab Charitable
 Leroy & Norma Schafersman (Arlington, NE)
 Greg Schou (Albert Lea, MN)
 Susan Simpson (Castle Rock, CO)
 Sandy Sonderup (Blair, NE)
 Jane Sorensen & David Marchant (Fairfax, VT)
 Mike & Diane Stewart (St. Peter, MN)
 Arliss Stockdale (Ames, IA)
 Larrie Stone (Ames, IA)
 Martha Stone (Providence, RI)
 Rob Stone (Omaha, NE)
 Carol Svendsen & Jay Mead (Denver, CO)

Karen Taylor (Springville, IA)
 Ellen Thain (Stoughton, WI)
 Wayne & Naomi Theye (Winona, MN)
 Paul Thisted (Evergreen, CO)
 Charlotte Travis (San Antonio, TX)
 Barb Triplett (Blair, NE)
 Arlen & Asta Twedt (Ankeny, IA)
 Phil Vasby (Cambridge, WI)
 DeeAnn Vink (Fort Collins, CO)
 Barbara Ward (San Diego, CA)
 LeRoy Wigdahl (Blair, NE)

Washington County Community Foundation/Washington County Gives:

Pat Bentsen (Blair, NE)
 Kevin & SusanAnn Harrison (Portage, MI)
 Marilyn Hawes (Fort Calhoun, NE)
 Roger & Linda Howland (Omaha, NE)
 Joan Krogh (Blair, NE)
 Wyman & Laurie Nelson Community Fund (Blair, NE)
 Leif Neve (Bethesda, MD)
 Karen & Gary Riddle (Blair, NE)
 Julie & Charlie Rohlfing (Blair, NE)
 Sandy Sonderup (Blair, NE)
 Paul Swanson (Omaha, NE)
 Washington County Community Foundation grant

2023 Thrivent Choice/YourCause Gifts

Lee Barney (Oregon City, OR)
 Myrv Christopherson (Decorah, IA)
 Roger Hanson (St. Paul, MN)
 Carol Haussermann (Blair, NE)
 Susan Hettinger (Westminster, CO)
 Debbie Katt (Blair, NE)
 Linda Kastrop (Blair, NE)
 Kevin Knitt (Stevens Point, WI)
 Lee Anne Lack (Montrose, MN)
 Jeanette & Robert Larson (Pipestone, MN)
 Norman Madsen (Monroe, IA)
 Leon & Alice Neve (St. Paul, MN)
 Jim Olsen (Blair, NE)
 James Ruden (Littleton, CO)
 Sandy Sonderup (Blair, NE)
 Elsa Steffensen (Hoffman Estates, IL)
 Linda Steffensen (Hoffman Estates, IL)

2024 Thrivent Choice Gifts:

Susan Hettinger (Westminster, CO)
 Linda Kastrop (Blair, NE)
 Norman Madsen (Monroe, IA)

50/100 Club

The name of the 50/100 Club was inspired by the idea that if 100 members gave \$50 per month, most of our operating expenses would be met. Members sustain DAAL by giving a minimum of \$600 per year (given monthly, quarterly, or yearly according to the donor's preference). Those at the Founder Level give at least \$2,000 per year. An added benefit of being part of the 50/100 club is receiving one donation acknowledgment for tax purposes in January reflecting a yearly total of all donations, rather than getting a separate acknowledgment for each financial contribution. These donations are part of the General Fund. (* indicates deceased)

FINANCIAL REPORT (continued)

50/100 FOUNDER LEVEL

Phil* & Florence Larsen (Blair, NE)

50/100 GENERAL

Erna Berthelsen (Albert Lea, MN)
 Mark & Erika* Bondo (Freehold, NJ)
 Becky Bryant (East Dubuque, IL)
 Myrv & Anne* Christopherson
 (Decorah, IA)
 Roger Hanson (Roseville, MN)
 Michael & Jill Hennick (Blair, NE)
 Tim* & Sharon Jensen (Omaha, NE)
 Dody Johnson* (in our hearts)
 Julianne Johnson & Judy Pollock*
 (Columbus, OH)
 Chuck & Joyce Jorgensen (Blair, NE)
 Gene* & Nancy Lindblad (Blair, NE)
 Barbara Meduna (Monument, CO)
 Vordyn Nelson (Marshall, TX)
 John Mark & Dawn Nielsen (Blair, NE)
 Lisa Nielsen (Fairfield, PA)
 Jay Planalp (Loveland, CO)
 Palma & Larry Plume (Evergreen, CO)
 Scott & Colleen Rasmussen (Omaha,
 NE)
 Sandy Sonderup (Blair, NE)
 Joan Sorensen (Richardson, TX)
 Carol Svendsen & Jay Mead (Denver,
 CO)
 Ron & Vicki Vig (Holdrege, NE)
 Deb Schou Wood (Bloomington, MN)
 Sandy Wunder (Eaton, CO)

Legacy Builders

These donors have named DAAL in their estates (* indicates deceased). If you are not on this list but should be, please contact Jill Hennick at 402-426-7910.

Erna Berthelsen
 Judy Brehm
 Borge M. Christensen*
 Myrv & Anne* Christopherson
 Bernhard* & Marilyn* Erling
 Kathryn (Olsen) & Milbern Goetz
 Lois Girtz Halley*
 Frederick "Fritz" J. Hansen*
 Roger J. Hanson
 Michael and Jill Hennick
 Russell P.* and Esther A. Jensen
 Tim* & Sharon Jensen
 Ada Jeppesen*
 Julianne Johnson and Judy Pollock*
 Oscar* & Dody* Johnson
 Paul & Liz Johnson
 Alice M. Jorgensen*
 Lorene Larsen
 Phil* & Florence Larsen
 Carol Madsen Larson*
 Gene* & Nancy Lindblad
 Gary & Diane Madsen
 George Madsen*
 Ronald D. Johnson* and Bodil Strom
 Muller
 John W.* & Elizabeth* Nielsen
 LeVern* & Marilyn* Nielsen
 W. Clayton Nielsen*
 Larry & Palma Plume
 Joan Sorensen
 Deb Schou Wood ■

ENDOWMENT FUND

The endowment fund is an investment in the future of the Archive. Some named funds have been established in memory of loved ones. The balance in the endowment follows. Figures are rounded to the nearest \$500 and are listed at historic cost.

Ada Stokes Jeppesen Memorial Fund	\$100,000
Deloris Hansen Bengtson Memorial Fund	71,000
Oscar & Dody Johnson Memorial Fund	13,000
Bernhard & Marilyn Erling Memorial Fund	10,000
John T. & Virginia (Lippincott) Beck Memorial Fund	7,500
Rev. Aster & Ruth Neve Family Memorial Fund	7,500
Dagmar Vasby Memorial Fund	7,000
Martin & Else Andersen Memorial Fund	5,000
Earl Jensen Family Memorial Fund	4,000
Rev. Sigurd D. & Dorothy M. Petersen Memorial Fund	3,500
Maryann & Jerry Lund Memorial Fund	2,500
Subtotal of named funds with balances over \$1,000	231,000
General Endowment Fund	138,000
Total Endowment Funds	\$369,000

ANNUAL REPORT 2023

\$10,000 and over

The estate of Borge M. Christensen
 The estate of Frederick J. "Fritz" Hansen
 Florence Larsen, Blair, NE
 The estate of John W. & Elizabeth Nielsen

\$5,000 - \$9,999

Patricia Bentsen, Blair, NE
 Eleanor Schou, Albert Lea, MN

\$2,500 - \$4,999

Thomas Bengtson, Rock Island, IL
 Erna Berthelsen, Albert Lea, MN
 Danish Brotherhood Lodge #1, Omaha, NE
 Michael & Jill Hennick, Blair, NE
 Larry & Palma Plume, Evergreen, CO
 Joan Sorensen, Richardson, TX
 Thrivent Choice, Minneapolis, MN
 Washington County Community Foundation, Blair, NE

\$1,000 - \$2,499

Lori & Kevin Bayne, Omaha, NE
 Caterpillar Corporation, Edwards, IL
 Myrv Christopherson, Decorah, IA
 Bent & Lee Collin, Cedar Hill, MO
 Barbara & Dennis Garrett, Blair, NE
 Chris Gehringer, Omaha, NE
 Carol Haussermann, Blair, NE
 Tim & Sharon Jensen, Blair, NE
 Julie Johnson, Columbus, OH
 Don & Joyce Jorgensen, Ripon, WI
 Richard & Delores Jorgensen, Poy Sippi, WI
 Charles & Janet Kahn, Gulf Breeze, FL
 Carol Knutson, Preston, MN
 Marty & Linda Koefoed, Missouri Valley, IA
 Nancy Lindblad, Blair, NE
 Kent & Ann Lynch, Edwards, IL
 Lowell & Sue Madsen, Fresno, CA
 Kathy & Duncan Meldrum, Mertzown, PA
 The Wyman & Laurie Nelson Community Fund of the
 Washington County Community Foundation
 Leon & Alice Neve, St. Paul, MN
 John Mark & Dawn Nielsen, Blair, NE
 Lisa Nielsen, Fairfield, PA
 Dixie Petersen, Wichita, KS
 Scott & Colleen Rasmussen, Omaha, NE
 Scandinavian Seminar, New York, NY
 Sandy Sonderup, Blair, NE
 Carol Svendsen & Jay Mead, Denver, CO
 Phil Vasby, Cambridge, WI

LeRoy Wigdahl, Blair, NE

\$500 - \$999

Gary & Cindy Larsen Adams (Littleton, CO)
 Schwab Charitable Fund by Keith & Paula Anderson
 Dennis Barten, Manning, IA
 Benevity Community Impact Fund
 Mark Bondo, Freehold, NJ
 Karen & Mike Brodie, Richardson, TX
 Becky & Phil Bryant, East Dubuque, IL
 William E. & Rose Marie Davis Foundation, Bennington,
 NE
 Milbern & Kathy Goetz, Greeley, CO
 Berniece Grewcock, Omaha, NE
 Stuart Hansen & Erica Eddy, Mount Pleasant, WI
 Jim & Nona Jensen, Crossville, TN
 Chuck & Joyce Jorgensen, Blair, NE
 Bill Krause, Columbia, MO
 Lee Anne & Eugene Lack, Montrose, MN
 Bill & Toni Lawson, Green Bay, WI
 Gary & Diane Madsen, Omaha, NE
 Barbara Meduna, Monument, CO
 Vordyn Nelson, Marshall, TX
 Roger & Marilyn Nichols, Tucson, AZ
 Beth Paulsen-Olmstead, Westbrook, ME
 Ted Pedersen, Duluth, MN
 Jay Planalp, Loveland, CO
 Bill & Margaret Rodenburg, Centerville, OH
 Jan Sorensen, Columbus, OH
 Deb Schou Wood, Bloomington, MN
 Sandy Wunder, Eaton, CO

\$250 - \$499

Assured Life Association, Englewood, CO
 Danish Brotherhood Lodge #35, Chicago, IL
 Scott & Shelly Grorud, Hutchinson, MN
 Mary Henriksen & Alan Hanson, Omaha, NE
 Al & Debbie Henke, Fitchburg, WI
 Vibeke Jensen, Bennington, NE
 Niel Johnson, Independence, MO
 Richard & Pat Jorgensen, Blair, NE
 Jean Kaldahl, Port Townsend, WA
 Joan Krogh, Blair, NE
 Keith & Lori Larsen, Blair, NE
 Liz Larsen, Cupertino, CA
 Donna Madsen, Omaha, NE
 Brian Nevermann, West Des Moines, IA
 Bob & Judy Rasmussen, Elizabeth, CO
 Carl L. M. & Nancy Rasmussen, Sugar Grove, IL
 Kenneth Truhlsen family, Blair, NE
 Ron & Vicki Vig, Holdrege, NE

\$100-\$249

Marilyn & Greek Abariotes, Blair, NE
 Al & Fran Anderson, Omaha, NE
 Bill & Betsy Anderson, Blair, NE
 Allen Andreasen, Nashotah, WI
 Anonymous/cash, Blair, NE
 Timothy Barnes, Omaha, NE
 Jack & Lois Beal, Bothell, WA
 Miriam & Michael Bennett, Discovery Bay, CA
 Marcia Bergmeyer, DeWitt, NE
 Aase Besson, Lake Oswego, OR
 Deborah Biorn, St. Cloud, MN
 Egon & Diana Bodtker, Junction City, OR
 Carol Bogacz, La Vista, NE
 Frida Brewer, Lampasas, TX
 Karla Broman, Omaha, NE
 James & Annette Brown, Mishicot, WI
 Steve & Connie Buller, Blair, NE
 Lois Olson Burkholder, Shakopee, MN
 Margaret Castiglioni, St. Charles, MO
 Vaughn Christensen, Blair, NE
 Robert & Martha Christiansen, Scottsdale, AZ
 Paul & Leana Christoffersen, Underwood, IA
 Patricia Corbin, Siloam Springs, AR
 Tony & Marsha Cotton, Barksdale AFB, LA
 Mary E. Cowling, Bethlehem, PA
 Anne & Don Eppley, Omaha, NE
 Jon & Beth Fredlund, Anoka, MN
 Agneta Gaines, Omaha, NE
 Joyce & Charles Gauck, Plymouth, MN
 Great Plains Communications, Blair, NE
 Esther Grindberg, Circle Pines, MN
 Linda A. Hall, Cedar Falls, IA
 Charles E. Hansen, Mt. Prospect, IL
 Kay Hansen, Minneapolis, MN
 Lucy Hansen, Tipton, IA
 Roger Hanson, Roseville, MN
 James Harper, Omaha, NE
 Mark Hennick/Plum Design, Kansas City, MO
 The David & Polly Hendee Fund of the Omaha Community Foundation
 Karen Hoyle, St. Paul, MN
 Suellen Hudson, Pensacola, FL
 Pamela Ivbulis, Elkhorn, NE
 Frederik & Dawn Jensen, Minnetonka, MN
 Ken & Bonnie Jensen, Albert Lea, MN
 Lorraine Jensen, Bloomington, MN
 Lynda Jeppesen, Oak Park, IL
 Karen Jessen, Waterloo, IA
 Michelle Johns, Spearfish, SD
 Kevin & Kari Jo Johnson, Omaha, NE
 Paul & Liz Johnson, Loveland, CO
 David & Michele Johnson, Council Bluffs, IA
 Lori Jones, Texarkana, TX
 Dorothy Jorgensen, Bemidji, MN
 Lis Jorgensen, Minneapolis, MN
 Richard & JoAnn Kleber, Northfield, MN
 Karen Knudsen, Ogallala, NE
 Jari Kolterman, Littleton, CO
 Lowell & Marilyn J. Kramme, Des Moines, IA
 Ruth Krishnan, Towson, MD
 Clark & Christine Larsen, Columbus, OH
 Lorene Larsen, Omaha, NE
 Sarah Meldrum, Mertztown, PA
 Mercy High School, Omaha, NE
 Sol Mockicin, Oaks, OK
 NE/CO Dist. Danish Sisterhood, Ceresco, NE
 Leif Neve, Bethesda, MD
 Ron & Kathie Nielsen, Mahtomedi, MN
 Folmer & Vera Nyby, Michigan City, IN
 Dwayne Olsen, Prior Lake, MN
 Jim & Sue Olsen, Blair, NE
 Dorothy Olson, Blair, NE
 Philip Panum, Englewood, CO
 Noel & Ruby Petersen, Omaha, NE
 Shirley Petersen, Canyon, TX
 John E. Peterson, Pottstown, PA
 Carol Prussa, Kearney, NE

John Rasmussen, Hicksville, NY
 Anne & Richard Rivers, Colorado Springs, CO
 Charlie & Julie Rohlfing, Blair, NE
 George & Sharon Rozanski, Omaha, NE
 The Moses & Emily Margritt Rodriguez Fund of Schwab Charitable
 Kathryn Ryan, Beaver Dam, WI
 Cindy Schou, Bloomington, MN
 Greg Schou, Albert Lea, MN
 Joy Schroeder, Columbus, OH
 Janet Schultz & Paul Hjortsvang, Boone, IA
 Jens & Eileen Simonsen, Oakdale, NE
 Carol Skogman, Seguin, TX
 Jane Sorensen & David Marchant, Fairfax, VT
 Paul Sorensen, DeKalb, IL
 Arliss Stockdale, Ames, IA
 Larrie Stone, Ames, IA
 Martha Stone, Providence, RI
 Shawnda Tench, Olmsted Falls, OH
 Paul Thisted, Evergreen, CO
 Thrivent Life, Minneapolis, MN
 Charlotte Travis, San Antonio, TX
 Barb Triplett, Blair, NE
 Lynda & Randy Truhlsen, Blair, NE
 DeeAnn Vink, Fort Collins, CO
 Helle White, Richardson, TX
 Paula Wolf, Elmhurst, IL
 Kathy Zwanziger, Columbus, OH

\$50-\$99

Anthony Abboud, Bennington, NE
 Ginny Blood, Burnsville, MN
 Judy Brehm, Blair, NE
 Joyce E. Christensen, Omaha, NE
 Greg & Sally Christiansen, Kennard, NE
 Nisse Christopherson, Des Moines, IA
 Jack & Verla Cramer, Gold Canyon, AZ
 Travis DeWitt, Torrington, WY
 Anne-Marie Douglas, Chicago, IL
 Lyle & Dorothy Feisel, Chestertown, MD
 Kay & Greg Forest, Marion, IA
 Catrine Giery, Myrtle Beach, SC
 Christy Hansen, Des Moines, IA
 Erik & Greta Hansen, Racine, WI
 Larry & Sandra Hansen, Fremont, NE
 Kristie Hansen-Mendez, Chicago, IL
 Kevin & SusanAnn Harrison, Portage, MI
 Loren & Dianne Havekost, Blair, NE
 Marilyn Hawes, Fort Calhoun, NE
 Nick & Dianne Hildreth, Red Oak, IA
 Raif & Inga Hoifeldt, Urbandale, IA
 Roger & Linda Howland, Omaha, NE
 Sally Hrdy, Omaha, NE
 Ron & Rikki Hulsebus, Omaha, NE
 Del & Trudy Hutton, Blair, NE
 Erik & Sara Jensen, Omaha, NE
 Alice M. Jorgensen, Royal Oak, MI
 Jim & Linda Jorgensen, Blair, NE
 Gladys Kempe, Tustin, CA
 Ramona Klaasmeyer, Omaha, NE
 Larry & Susan Legore, Algona, IA
 Annette Lind, Wauwatosa, WI
 Roger Lorsch, Blair, NE
 Don Mattox, Sheboygan, WI
 Ruth McMaster, Omaha, NE
 Robert & Sonja Messer, Pueblo West, CO
 Patricia Miller, Crawfordsville, IA
 Ruth & Dale Mortensen, North Olmsted, OH
 Norma Nabity, Omaha, NE
 William C. Nelsen, St. Peter, MN
 Kaj Neve, New York, NY
 Pacific Northwest Danish Sisterhood, Shoreline, WA
 Dale & Terry Paulsen, Blair, NE
 Duane Pedersen, Ames, NE
 Eric Petersen, Mission, KS
 Julie Petersen, Lincoln, NE
 Petersen Kathy & Greg, Tampa, FL
 Bob & Darlene Rademacher, Lincoln, NE

Barb & Jim Rinnell, Des Moines, IA
 Leroy & Norma Schafersman, Arlington, NE
 Mark Schulze, Omaha, NE
 Mike & Diane Stewart, St. Peter, MN
 Bill & Donna Taylor, Neligh, NE
 Karen Taylor, Springfield, IA
 Ellen Thain, Stoughton, WI
 Wayne & Naomi Theye, Winona, MN
 Nancy Thompson, Urbandale, IA
 Peggy Trout, Omaha, NE
 Arlen & Asta Twedt, Ankeny, IA
 Barbara K. Ward, San Diego, CA
 Kitty Wooley, Colorado Springs, CO

\$49 and Under

A.A.U.W., Blair, NE
 AmazonSmile, Seattle, WA
 Larry & Marilyn Becherer, Omaha, NE
 Susan Bennerotte, Maryville, MO
 Larry & Lois Bornemeier, Waukesha, WI
 Phyllis Bunten, Blair, NE
 Sondra Carver, Decora, IA
 Sal & Pam Ciulla, Bellevue, NE
 Judith Clark, Florence, WI
 Bob & Kris Coffey, Blair, NE
 Timothy & Mary Coyle, Omaha, NE
 Marieanne Cullen, Menlo Park, CA
 Roger & Doris Daggett, Mission, TX
 Geraldine Davis, Blair, NE
 Patricia Dutch, Omaha, NE
 Marvene & Dave Everson, Omaha, NE
 Cynthia Gunderson, Elgin, IL
 Karen Hansen, Omaha, NE
 Tom & Colleen Harper, Omaha, NE
 Kathy & Larry Henning, Middleton, WI
 Sharon Henriksen, Lincoln, NE
 Ingham-Okoboji Ministry, Milford, IA
 Gordon & Trudy Iseminger, Grand Forks, ND
 Jack Jensen, Springfield, NE
 Mick & Sandra Jensen, Blair, NE
 Opal Jensen, Blair, NE
 June & Clark Jensen, Blair, NE
 Marjorie Johnson, Blair, NE
 Jerry & Joanne Jones, Omaha, NE
 Debbie Katt, Herman, NE
 David & Carol Kuhr, Platte City, MO
 Charlie Lang, Orlando, FL
 Susan Larson, Minneapolis, MN
 Tom & Janice Lippincott, Blair, NE
 Michael Lowe, Logan, IA
 Gilda McCorkle, Louisville, NE
 Sandra McMullen, Tekamah, NE
 Betty Megrue, Blair, NE
 Dave & Cathy Mehrens, Joplin, MO
 John & Jane Mehrens, Neosho, MO
 Ralph & Patricia Mehrens, Bellevue, NE
 Richard & Cheryl Mohr, Fountain Valley, CA
 Joyce & Terrence Moran, Cedar Rapids, IA
 Roger & Donna Nelson, Blair, NE
 Steve & Lynda Nelson, Cedar Rapids, IA
 Cheryl Nielsen, Harlan, IA
 Kathy Oftedahl, Waseca, MN
 Dan & Donna Persson, Kearney, NE
 Mic & Susie Pinquoch, Blair, NE
 Russell & Marilyn Price, Omaha, NE
 Roy & Suzie Rayner, Omaha, NE
 Gary & Karen Riddle, Blair, NE
 Corinne Robinson, Minneapolis, MN
 David & Renee Sheets, Blair, NE
 Rob Stone, Omaha, NE
 Arlene Stork, Fremont, NE
 Paul Swanson, Omaha, NE
 Sharon Tauke, Cedar Rapids, IA
 Judy Thompson, Blair, NE
 Kyle O. von Kamp, Ashland, OH
 Donald & Karen Warrick, Omaha, NE ■

Contact Information

Thank you for your interest in the Danish American Archive and Library. All members enjoy three issues of the *Jottings* newsletter each year and reduced program service fees. The newsletter is mailed in March, July and December. Please keep your contact information current.

OLD ADDRESS: see label on reverse, or

Name(s) _____

Mailing Address _____

City _____ State _____ Zip _____

NEW ADDRESS

Name(s) _____

Mailing Address _____

City _____ State _____ Zip _____

If not permanent: __ Temporary from __ / __ (month/year) to __ / __ (month/year)

__ Seasonal (repeat every year) from ____ (month) to ____ (month)

Phone _____ Email _____ (send *Jottings* via email)

Additional information _____

Featured Danish American Commemorative Wall Panel

The Commemorative Wall continues to grow, and a limited number of panels are still available. We will continue to feature a panel in each issue of the newsletter. To see all the panels, you have two options. The first is to stop by and view the exhibit in person. The second is to visit the Commemorative Wall Gallery on our website.

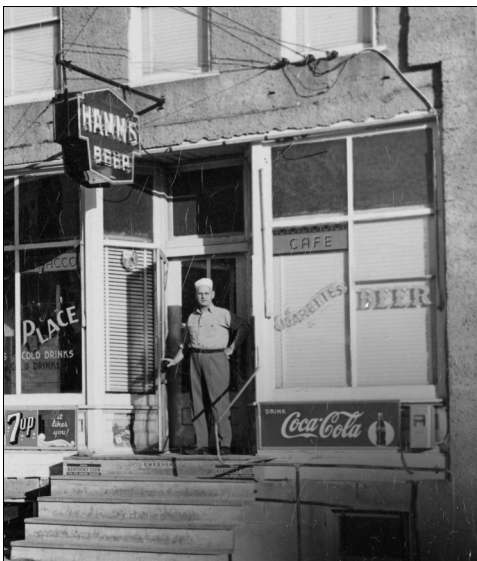


 In Memory of the 

Peter and Anna Kaer Family

Peter Hansen Kaer (1862-1956) immigrated from Horsens, Denmark in 1879 at 17 years of age. Anna Christina Pedersen (1877-1960) was born to Danish immigrants in Douglas County, Nebraska, and married Peter in 1903. To this union six children were born. The family farmed near Nashville, Washington County, Nebraska.

PARTING SHOT



Danish immigrant Hans “Ed” Koefoed at the door of his tavern in northeast Iowa circa 1950.

(photo courtesy of Marty Koefoed)