

# American Dane

April 1987



The official publication of the Danish Brotherhood In America, National Headquarters located at 3717 Harney Street, Omaha, NE 68131.





**WE'VE WON THE AWARD FOR  
HAVING THE BEST PASSENGER SERVICE  
OF ANY AIRLINE.**

**FLY WITH A WINNER. FLY SAS.**

***SAS***<sup>®</sup>  
The Airline of Scandinavia

**National  
Board of Directors**

**NATIONAL PRESIDENT:**

Robert E. Ibsen  
8644-33rd Avenue  
Kenosha, WI 53142  
(414) 694-3895

**NATIONAL FIRST VICE PRESIDENT:**

Peter Weber  
1665 Copenhagen Dr.  
Solvang, CA 93463  
(805) 688-4457

**NATIONAL SECOND VICE PRESIDENT:**

Clyde R. Langsted  
12215 - 11th Ave. N.W.  
Seattle, WA 98177  
(206) 282-5220

**NATIONAL DIRECTORS:**

Erling C. Braumann  
115 White Avenue  
Warwick, RI 02886  
(401) 738-5577

Paul Carlsen  
36746 Marler  
Livonia, MI 48154  
(313) 464-2697

Kenneth Pedersen  
Box 151  
Hardy, NE 68943  
(402) 279-2395

Woodrow T. Petersen  
402 New Salem  
Park Forest, IL 60466  
(312) 481-2761

**NATIONAL PAST PRESIDENT:**

George J. Jacobsen  
90 Foster Avenue  
Malverne, NY 11565  
(516) 593-5358

Pamela K. Dorau  
editor-in-chief  
Jerome L. Christensen  
administrative editor



The American Dane is the official publication of The Danish Brotherhood in America, 3717 Harney Street, Omaha, NE 68131. Second-class postage paid at Askov, Minnesota 55704. The magazine is provided to members each month as a benefit of membership. Non-member subscription rates or gift subscriptions, \$6.00 annually, domestic; \$8.00 foreign. Advertising rates provided on inquiry. Both display and classified advertising can be purchased. Members receive a 30% discount on display ads. All inquiries and correspondence should be directed to: The Danish Brotherhood in America, 3717 Harney Street, Omaha, NE 68131, telephone (402) 341-5049.

# American Dane

magazine



USPS 148-180  
ISSN 0739-9170

## Denmark Our Heritage - America Our Home

### Monthly Features:

<b>PRESIDENT'S PAGE</b> .....	page 4
We need to show our appreciation.	
<b>FRATERNAL PROTECTION</b> .....	page 5
Tells why you should join the Danish Brotherhood.	
<b>OUR LODGES IN ACTION</b> .....	page 12
Lodge No. 143 in Petaluma, CA sends their guests off in style.	
<b>JENS AND ERIK</b> .....	page 22
Unfortunately, it's time to go home.	
<b>VIKING ADVENTURES</b> .....	page 23
A suggestion is given for your May social activity.	

### Feature Articles:

<b>COPENHAGEN IS A SLOWER PACE, AND OLD WORLD CHARM</b> .....	page 6
Tom and Joanne O'Toole describe their trip to Denmark.	
<b>ANNUAL REPORT OF THE LODGES</b> .....	page 8
See how your lodge compares to others.	
<b>THE DANISH IMMIGRANT MUSEUM — ELK HORN, IOWA</b> .....	page 9
A place you may want to visit on your way to the 1987 National Convention.	
<b>IN SEARCH OF AN HONEST MAN</b> .....	page 10
Everyone makes mistakes.	
<b>RECOMMENDER OF THE YEAR ANNOUNCED</b> .....	page 11
Find out who Harry Mikkelsen donated \$300 to.	
<b>A LOVELY LAND</b> .....	page 22
Learn how someone who has never been there views Denmark.	

VOLUME LXXI

APRIL 1987

NUMBER 4

Cover photo: Rosenberg Castle is the barracks for the Queen's guard and home to the priceless Danish crown regalia and crown jewels. Photo courtesy of Tom and Joanne O'Toole, Travel Writers/Photographers, 30825 Euclid Avenue, Wickliffe, Ohio 44092



# President's Page

**Robert E. Ibsen**  
**National President**

President Ronald Reagan once stated: "The spirit of volunteerism is deeply ingrained in us as a nation. Indeed, when asked by pollsters, most Americans state their belief that no matter how big government gets and no matter how many services it provides, it can never take the place of volunteers. In other words, the American people understand that there are no substitutes for gifts of service given from the heart." The Danish Brotherhood in America consists of thousands of volunteers who have given and continue to freely give their time, talents, energy and service to promote the values of our society. Too many times we take these members — who really keep all the lodges going — for granted.

For instance, have you ever thought about all the time and energy involved with the mailing of your lodge newsletter. In many cases, the same person writes, types, copies, folds, staples, addresses and mails your newsletter. How many times have you commented to this volunteer about an error you sighted? At the same time, how many times have you uttered the two simple words, "Thank You," to this volunteer for providing you with important information?

While most of our members do not volunteer their time and energy just to receive recognition and thanks, they are definitely deserving and worthy of this praise. I think we are all guilty of taking certain members for granted, and the National Board of Directors and home office staff are no exceptions. This was one of the main reasons the "Howard E. Christensen" Award was established last year — to show our thanks and to give recognition to the most dedicated member of the Danish Brotherhood in America as well as all others nominated.

By the time this column is printed, your Board of Directors will have met for the Spring Board Meeting and will have reviewed all nominations received to declare a winner of the 1987 "Howard E. Christensen" Award. I'm sure you can imagine how very difficult this task is. Our society has so many outstanding volunteers who put forth that extra effort, it is almost impossible to single out one member. I am very pleased to note that many lodges are recognizing the need to show appreciation to these members by declaring their lodge's most dedicated member, and, in turn, nominating him or her for the "Howard E. Christensen" Award. I must admit, though, that at the same time I am very disappointed in the number of nominations received. Compared to 1986, the number received dropped by 45% in 1987. It's very hard for me to justify any reason for this sharp decline. My only thought is that many lodges did not realize that you may renominate the same person year after year. Only the winner of the National "Howard E. Christensen" Award is ineligible to be renominated.

I know we still have hundreds of outstanding members in our society. I know a great need still exists to show appreciation to these members. While it is too late to submit additional nominations for the 1987 award, it's not too late to begin to show your appreciation to all members, no matter how big or small their voluntary acts are.

The next time you are at a lodge activity, think about all the hard work which went into that activity for your enjoyment. Think about the hours involved in planning and preparation. Think about the hours which still are needed to clean up the hall, kitchen, etc. It seems the same members do it year after year and enjoy doing it. Why? Because they have the true fraternal spirit of the Danish Brotherhood in America — namely, the main purpose of all volunteers — the more you give, the more you receive. As you drink that cup of coffee, or eat that aebleskiver, remember to take the time to stop and say "Thank You" to that faithful volunteer.

In closing, I would like to take this opportunity to personally thank all the volunteers in the Danish Brotherhood — without you, our society would be nonexistent. No matter how big or small your voluntary acts have been, from making a pitcher of iced tea to revitalizing a lodge, please accept my deepest thanks for being responsible for the many accomplishments of our society. It is also hoped that by noting the actions of others and reading this column you, too, will increase your voluntary activities.

## **Board Candidacy**

National Bylaws, Sec. 29, Par. 3 — A candidate for a position on the Board of Directors may declare his intent three (3) months in advance of the convention. A biography of the candidate and a presentation of his ideas may appear in the official publication if he so desires and not to exceed one-half (1/2) page in length.

# Why Join the Danish Brotherhood

*Our society was founded on the principle of promoting and perpetuating Danish culture and traditions and providing fraternal benefits including family protection.*

## Membership Benefits

- Scholarships** — Danish Brotherhood scholarships are awarded each year to members in good standing attending or planning to attend an accredited college, university, technical or vocational school in an undergraduate status.
- Orphan Benefit** — Monthly income not to exceed a total of \$50,000 per family to assist fully orphaned children. A \$7,200 scholarship may also be available if needed.
- Camp Grants** — May be awarded to deserving youths to help defray the cost of attending a summer camp of their choice.
- Fraternal Aid** — Provides financial assistance to insured members when an emergency exists or income is insufficient. Such aid can fully pay premiums on a member's life insurance certificate and provide up to \$750.00 per year in supplemental income for as long as needed.
- Lodge Activities** — Participate in lodge activities and programs such as language classes, folk dancing, picnics, festivals, and conventions — just to name a few.
- "American Dane"** — A monthly publication of cultural news, lodge activities, national contests and articles of interest provided members at no additional cost.
- Insurance Protection** — As a fraternal benefit society, the Danish Brotherhood provides its members with a choice of life insurance plans such as term and permanent cash value life insurance. Family plans are also available.
- Retirement Annuities** — Flexible and Single Premium Annuities currently paying 8½% can provide a guaranteed income for life at retirement. Flexible Premium Annuities may also be issued as a funding instrument for an IRA, while the Single Premium Annuity may be issued to receive the assets of an existing IRA.

Why not discuss the benefits of membership with a friend or relative or hand or mail this page of the magazine to someone you believe might be interested in membership? Our members can insure the future of the Danish Brotherhood by continuously recommending friends and relatives for membership.

YES, I WOULD LIKE TO RECEIVE ADDITIONAL INFORMATION ABOUT MEMBERSHIP

Name \_\_\_\_\_

Address \_\_\_\_\_

City \_\_\_\_\_

State \_\_\_\_\_

Zip \_\_\_\_\_

Phone \_\_\_\_\_

Ages: Husband \_\_\_\_\_ Wife \_\_\_\_\_ Children \_\_\_\_\_

Name of Sponsor \_\_\_\_\_

Lodge No. \_\_\_\_\_

**Mail To: The Danish Brotherhood in America  
3717 Harney Street, Omaha, NE 68131  
Phone (402) 341-5049**

# Copenhagen is a Slower Pace, and Old World Charm

*by Tom and Joanne O'Toole, Travel Writers*

As we stepped off our SAS flight a salty cool breeze challenged our sense of jet lag, while a soft morning sun danced off a rain-washed tarmac. The sky was an electric blue and the slight snap in the air confirmed the fact that fall was fast approaching.

We had picked early September for a two-week adventure through Scandinavia, the northern limits of the European continent, in hopes of avoiding the heavy tourist season and being able to enjoy the sights at a leisurely pace. From the moment we touched down at Kastrup Airport in Denmark's capital of Copenhagen, we knew we'd made the right choice.

Most tourists time their visits to this part of Europe for the summer months, but late spring and early fall generally offer clear skies and a sweater or light jacket is all you'll need during the day.

By 9:00 a.m. we'd gone through passport control, cleared customs with our luggage, exchanged money at the airport bank, and boarded the convenient SAS coach service into town. We would be in Copenhagen four days, so after an early check-in and a cat nap, our first stop was the tourist information office to purchase a Copenhagen Card — a real bargain allowing one to three days free unlimited travel by rail or bus in the city and suburbs, free admission to 40 museums and sites (including the zoo and Tivoli Gardens), and 50 percent discount on ferry trips. Card rates range from \$6-14, with children 5-11 getting them at half price.

Next on our agenda, since we were still a little droopy from the time change, was an easy afternoon city coach tour that gave us our bearings and a quick history of this compact and comfortable walking city.

By evening we had perked up and decided what better way to start our Scandinavian holiday than a night in world-famous Tivoli Gardens. Danes do not regard this as just an amusement park, rather it is their special oasis of enchantment filled with rides, concert performances, live shows, pantomime theater, circus acts, game arcades, and two dozen spots to dine. This is all staged among 20 acres of colorful flower beds, lakes, and lawn areas right in the heart of the city. At night Tivoli sparkles with more than 100,000 topiary lights woven through the trees and music fills the air.

As we came through the turnstiles the Tivoli Boys Band (109 boys, 10 to 16 years-old) paraded by in their bright red and white guard uniforms, setting the mood with a few rousing tunes.

Having asked our hotel concierge to make our reservations at the Balkonen, one of the seven luxury restaurants in the park and offering a buffet (carvery) service, we hurried off to find it on the upper floor of a Turkish confection of a building. We were as enchanted as the Danes with this grandfather of amusement parks, and as we walked its gaily lit paths we knew we'd return to play another day. Tivoli is open May 1 through September 15, and is host to four million international visitors every year during its season.

To cap off our evening we walked down the Stroget (Strolling Place), a five-block, mile-long pedestrian shopping street that connects Copenhagen's two main squares. It's the place to see and be seen anytime of day, and at 11:30 p.m. it was alive with cafes, fast food chains, window shoppers, and

mod teenagers sporting the latest in wild, spiked, pink and blue haircuts, and baggy clothing.

Danes love to socialize and are a very convivial people, so you'll find their narrow streets are as busy and safe at midnight as they are at noon. When you return to shop Stroget in the daytime, come with your credit cards at the ready, as Denmark's most famous shops are located here. Rosenthal, Bing and Grøndahl, Royal Copenhagen Porcelain, Dansk, Bang Furriers, and Georg Jensen Jewelers are among the many, with both Jensen's and Royal Copenhagen offering free museums displaying their best pieces.

As you walk along you'll spot a number of small, crooked streets leading away from the busy stream of traffic. If you follow them you'll come to small antique shops, art galleries, and boutiques.

Day two found us ready to strike out on our own. We'd already done our homework on the capitals of Scandinavia, so with map in hand plus a good guide book we headed for Slotsholmen, a small island within the city, where Bishop Absalon is said to have founded Copenhagen in 1167.

At a small square (Højbro Plads) across from the island is a statue of the bishop astride his horse and looking across to Christiansborg Palace (the seat of government), the world's oldest Stock Exchange, the Royal Chapel and Naval Church, and the Royal Library Gardens. Beneath the palace are the remains of Absalon's original castle. There are tours of the palace that take in Parliament, the Royal Reception Rooms, and the ruins. A number of small museums on the island are also open at specified times.

A few blocks away is the Ny Carlsberg Glyptotek, the art museum built by the founder of Carlsberg Brewery. We admired its formal Egyptian collection and then walked up Andersen Boulevard to the main entrance of Tivoli Gardens, joining businessmen and shoppers who had stopped by to lunch and enjoy a few moments of fun.

Opposite the main entrance to Tivoli and alongside City Hall sits a bronze statue of Hans Christian Andersen, creator of Andersen's Fairy Tales and Denmark's most beloved and famous son. Everyone stops to pose beside him and rub the well-worn knees or toes of his shoes. He looks out to Radhuspladsen (Town Hall Square), one of the city's busiest areas. You can tour City Hall and see its famous Jens Olsen's World Clock, then walk across the square to wait for the Golden Girl weathervane to come out and give the temperature and forecast.

Stroget connects Town Hall Square to Kongens Nytorv (Kings Square), a busy major traffic circle that is home for the Royal Theater, Royal Academy of Arts, and the grande dame of hotels, the D'Angleterre.

Across the circle is Nyhavn, a three-block long canal that was once a rough, tough seaman's haven. Today colorful wooden sailing ships bob alongside the docks, harbor and canal tours depart every half hour, and at the far end hydrofoils make a 40-minute trip across the sound to Sweden. On the small streets along the banks 17th and 18th century homes have become elegant restaurants (such as Lenore Christine, however they were so booked up we couldn't get a table any day), art shops, ships chandlers, and chic cafes with umbrella tables out front. It's a fascinating area, full of color, characters, and new

experiences. Hans Christian Andersen chose Nyhavn as his home in his adult years after gaining fame, and Nyhavn looks pretty much today as it did back then.

That evening we dined at the Cafe Lumskebugten (at 21 Esplanaden near the Langelinie Promenade), a cozy, charming restaurant that offers top-notch food, impeccable service, and classic Danish atmosphere.

The next morning we awoke to our only rain in two weeks, but by the time breakfast was over so were the showers. We spent the morning visiting Amalienborg Palace with its four identical rococo mansions that are the residences of Queen Margrethe II and the royal family. Although you can't tour indoors, the outside is impressive. The daily changing of the Royal Life Guard at noon is not as grand as the ceremony at Buckingham Palace, but is colorful and precise, and when the Queen is in residence is accompanied by the royal band. We took the obligatory photograph of the duty guard in his bearskin cap staring straight ahead, bid him adieu, and set out for the nearby Promenade that follows the sound, separating Denmark from Sweden and the Baltic.

Staring forelornly out to sea beyond the Promenade sits the "Little Mermaid," Hans Christian Andersen's fairy tale creation that has become the symbol of Denmark. She is "the most photographed and unfortunately most mutilated sculpture" in the country, said a guide speaking to a nearby group of tourists.

Our Copenhagen Card had already given us more than our money's worth when we decided to try our first bus ride. Public transportation is excellent throughout the city and everybody speaks English, so after a few questions and friendly directions we were on our way to Rosenborg Castle and the Botanical Gardens.

Rosenborg is the barracks for the Queen's guard and home

## IUC SVENDBORG International Education Centre

Denmark's only residential centre for INTERNATIONAL BACCALAUREATE (IB) studies. Apply now for the 2 year course starting in August 1987.

Certificate and Diploma courses taught in co-operation with Svendborg Gymnasium. English is language of instruction. IB Diploma is at the same level as Studentereksamen and qualifies for entry to universities in over 70 countries.

Phone or write for details of IB and other courses, including SUMMER SCHOOLS.

**IUC**  
**P. O. Box 150**  
**5700 Svendborg, Denmark**  
**Phone 45 9 21 66 99**

to the priceless Danish crown regalia and crown jewels. We were lucky to be there on a quiet day and were able to take our time viewing the royal rocks. Be sure to tour the castle interior and its splendid Knights Hall. The Botanical Gardens — ablaze with seasonal flowers — faces the castle, and nearby is the National Art Gallery.

Another bus ride brought us back to the city center and the Latin Quarter or old university district, a peaceful maze of streets, hidden squares, and great old buildings filled with antique stores, bookshops, and small cafes. Down one street is the Roundtower, a 17th century observatory built by Christian IV, which you can climb for an overview of this "flat as a pancake" city.

That evening we asked the doorman at our hotel (the D'Angleterre) to recommend a small cafe popular with the locals. Without hesitation he directed us to Cafe Grønnegade, around the corner and a few blocks away in the Latin Quarter. It was a real find — with good service, excellent cuisine, and very reasonable prices — and we heartily suggest it.

We spent our last day in Denmark visiting Odense on the Island of Funen, the birthplace of fairy tale teller Hans Christian Andersen. Although a long day trip by train and ferry, the Andersen birthplace and boyhood homes, an excellent museum are rich rewards for the journey.

Like any cosmopolitan city (population 1.5 million), you can only scratch the surface on your first visit, regardless of the length of your stay. You might want to see the zoo, tour the Tuborg or Carlsberg Breweries, take in a performance of the century-old Bennerweis Circus, or endless other attractions. Many visitors want to go to Hamlet's Castle in Elsinore, or head off to Roskilde to see the Viking Ship Museum and the Royal Cathedral.

## Danish plates *No customs or duty fees*



### 1987 Collectibles from Denmark

1987 Bing & Grøndahl	1987 Royal Copenhagen
Mother's Day Plate . . . . . \$24.95	Motherhood series (6th) . . . \$24.95
Christmas Plate . . . . . 33.50	Christmas Plate . . . . . 33.50
Children's 3rd Ed. Plate . . . 20.95	Christmas Ornament . . . . . 18.50
Christmas in America Plate 2nd . . . . . 24.50	Christmas Cup & Saucer . . . 45.00
Christmas in America Ornament . . . . . 12.00	Annual Christmas Plaquette . . . . . 7.95
Christmas Bell . . . . . 30.00	Fairy Tale Plate 5th . . . . . 33.00
Christmas Ornament 3rd . . . 12.00	Small Year Mug . . . . . 25.00
Annual Year Bell . . . . . 75.00	Large Year Mug . . . . . 35.00
Elk Horn Windmill Plate . . . 21.95	
Only 2,000 made)	

ORDER EARLY!

Postage \$1.75 first item; 75¢ each additional item

Send check or money order to:

**Danish Windmill Corporation**  
**P. O. Box 245, Elk Horn, Iowa 51531**  
**Phone (712) 764-7472**

Better yet, come visit us during:

Tivoli Fest Elk Horn, Iowa Danish celebration on May 23 and 24,  
The Danish Brotherhood and Sisterhood National Convention  
(we're only 1½ hours west of Des Moines) and Julefest Danish  
Christmas Festival on November 28 and 29.

You'll find Copenhagen "different" from the moment you arrive. The seafaring adventurers are long gone, replaced with friendly Danes, a slower pace, and a distinctive charm. There is an absence of big city clamor, and getting around on bicycles seems to be fast enough for many people. There are endless sightseeing choices, with surprises at the end of every old, meandering street. It's kind of nice to have lots of reasons to want to return to "wonderful, wonderful, Copenhagen."

### When You Go . . .

To obtain additional information and literature on the capital city of Copenhagen, as well as on other sightseeing in the

country, contact the Danish Tourist Office at 655 Third Avenue, New York, New York 10017. The telephone is (212) 949-2333. There are also offices in Chicago, Beverly Hills, and Toronto, Canada. If you're in Copenhagen, the office is at 22 Hans Christian Andersen Boulevard.

If you are planning a trip to any of the Scandinavian countries, contact the national airlines, Scandinavian Airlines System (SAS), for even more literature and information at 138-02 Queens Boulevard, Jamaica, New York 11435. The local telephone is (718) 657-2575. The North American (continental United States and all of Canada) toll-free telephone for flight information is (800) 221-2350.

# Annual Report of the Lodges

## December 31, 1986

Lodge No.	Location	Insured	Social	Monthly Assessment	Total Insurance	Fraternal Benefits	Total Assets			
1	Omaha, NE	144	107	DB	652,217					
3*	Davenport, IA	7	7	DB	14,250					
4*	Racine, WI	151	60	DB	300,000					
9*	Oshkosh, WI	10	1	1.77	9,000					
10	Council Bluffs, IA	53	7	32.22	64,969					
14	Kenosha, WI	179	238	DB	640,116	10,355	93,090.00			
15	Des Moines, IA	41	34	17.42	67,250	150.00	19,854.70			
16	Minden, NE	116	74	186.36	681,000					
17*	Chicago, IL	50	35	66.32	167,500					
26*	Fremont, NE	12		DB	10,750					
29	Seattle, WA	182	56	67.22	442,077		84,618.34			
30	Muskegon, MI	32	2	13.29	27,250					
32	New Haven, CT	71	10	33.65	104,250		24,036.18			
33	Tacoma, WA	20	25	DB	17,500		7,703.49			
34	Dwight, IL	189	61	DB	230,500	1,680.00	17,801.00			
35	Chicago, IL	83	76	8.29	207,710		58,959.29			
36	Milwaukee, WI	35	27	5.75	47,000		5,190.89			
37	Bridgeport, CT	17		5.94	12,750	160.00	10,524.16			
39	Oakland, CA	52	4	25.24	36,750	358.00	78,540.00			
41	Derby, CT	16	1	10.73	10,625	196.00	3,231.08			
42	Spokane, WA	44	16	25.54	54,125		11,720.98			
43*	Denver, CO	53	22	DB	57,375					
45	Minneapolis, MN	48	37	30.25	52,222		25,550.69			
46	Perth Amboy, NJ	53	120	18.24	114,500	275.00	39,941.70			
49	San Francisco, CA	64	27	36.62	39,000	85.00	23,385.00			
51	Ludington, MI	136	75	41.87	181,625	8,640.00	76,471.03			
56	Kansas City, MO	30	26	8.44	22,000		3,609.79			
62	Sioux City, IA	14	9	15.97	26,250		6,063.64			
64	Rockford, IL	23	10	10.13	27,125	180.00	1,323.53			
67	Fresno, CA	34	12	47.11	57,765	250.00	26,780.83			
70	Greenville, MI	57	11	36.26	68,750		18,436.78			
71	Penn Yan, NY	63	12	55.23	95,250		37,700.00			
73	Alden, MN	7	0	DB	7,625		3,190.81			
75	Albert Lea, MN	42	75	98.03	71,500		10,593.10			
78	Salt Lake City, UT	6	0	DB	2,500					
84	Lincoln, NE	39	20	28.83	76,269		895.93			
89	Superior, WI	7	9	1.28	3,500					
90	Port Reading, NJ	8	0	8.31	7,500		535.35			
92	St. Charles, IL	86	23	17.85	96,375	140.00	48,369.74			
95	Ferndale, CA	41	16	34.23	55,750		51,858.69			
102*	Providence, RI	21	3	18.50	38,125					
106*	Trufant, MI	56	2	50.32	57,500					
107*	Chicago, IL	13		DB	9,000					
110*	Winside, NE	10	5	1.89	9,000					
111*	Austin, MN	19	2	1.45	22,750					
113*	Enumclaw, WA	15	13	5.54	34,625					
116	Newark, NJ	70	7	38.90	96,375		24,515.14			
117*	Plainview, NE	46		DB	41,375					
121*	Tyler, MN	10	26	DB	9,500					
125*	Weeping Water, NE	21	1	1.03	49,674					
126	Los Angeles, CA	150	48	91.68	216,636	165.00	92,115.45			
134*	Ringsted, IA	9	0	DB	10,000					
139	Viborg, SD	50		DB	40,250					
143	Petaluma, CA	55	28	21.78	74,875					10,513.00
144	Dike, IA	69	15	DB	143,027					11,029.53
147	Newell, IA	25	16	5.79	73,875					2,426.89
148*	Cheyenne, WY	11	0	DB	14,000					
155	Bellingham, WA	17	10	1.85	14,250					
161	Ruskin, NE	59	48	DB	140,000			391.86		4,543.24
163	Edmore, MI	1		DB	1,000					
164*	New York, NY	35	53	DB	36,125					
167*	Portland, OR	201	72	27.31	1,017,434					
170*	Rocky River, OH	21	24	27.73	47,500					
172*	Philadelphia, PA	62	20	DB	142,914					
177	Cordova, NE	28	4	7.97	33,500					1,112.00
182	Waukegan, IL	31	15	1.01	30,250					8,317.58
183	Troy, NY	30	3	23.68	31,625					27,859.44
184	Hayward, CA	43	4	46.92	63,000			125.00		8,925.48
186	Luck, WI	20	75	DB	23,625			106.82		50,783.08
190	Schenectady, NY	48	8	32.50	53,875					
194	McMinnville, OR	14	8	10.72	12,000					1,677.83
195	Omaha, NE	16	4	25.58	22,125					1,743.89
202*	Warren, PA	16	4	.43	15,250					
206*	Blair, NE	23	65	DB	168,504					
211*	Grand Island, NE	30	22	DB	92,500					
213*	Ord, NE	8	0	DB	8,750					
217	Humboldt, IA	17	37	DB	55,000					4,395.47
219	Clear Lake, IA	24	5	10.66	45,750					944.35
225	Canton, OH	62	2	58.79	100,157			147.50		4,133.48
227*	Detroit, MI	239	141	193.79	460,104					
230	Arcata, CA	15	15	27.51	12,000					15,174.06
240	Rochester, NY	5	2	.90	1,125					366.53
241	Sayreville, NJ	17	0	8.56	10,875			1,400.00		1,176.63
242	Erie, PA	67	4	27.11	47,250					140,180.25
245*	South Bend, IN	26	0	DB	18,750					
254*	Brush, CO	3	0	0	2,500					
255*	Selma, CA	16	0	4.79	8,500					
257	St. Petersburg, FL	8	42	.98	49,250					
260*	Williston, ND	6	0	DB	4,750					
261*	Fowler, CO	71	14	43.76	85,125					
263	Askov, MN	98	5	37.73	135,522			1,280.76		212.22
264*	Pocatello, ID	12	0	3.60	10,500					
268	Junction City, OR	28	20	14.65	64,375			80.00		13,000.00
273	Dillon, MT	57	12	90.02	91,250			770.00		16,732.04
279*	Hunter, ND	3	0	.39	2,125					
283	Dagmar, MT	80	5	17.42	103,375			135.00		12,563.36
288	Cotesfield, NE	14	0	4.88	13,000					199.37
294	Barre, VT	68	9	38.03	70,750			150.00		10,123.17
299	Solvang, CA	101	52	DB	459,276					20,609.75
300*	Oneonta, NY	9	0	DB	7,250					
301	Akron, OH	45	2	154.27	138,000					865.80
306*	San Diego, CA	42	13	14.02	27,250					
314*	Hartford, CT	52	5	31.63	38,250					
318	Copenhagen, DK	0	20		Social					
319	Bakersfield, CA	25	4	32.47	23,375					6,203.24
321	W. Palm Beach, FL	2	15	0	1,500					811.14
322	Santa Barbara, CA	34	18	26.25	20,375			500.00		16,483.77
323	Alhambra, CA	37	23	21.95	50,364			858.52		2,020.33
325	Nassau Co., NY	74	54	145.99	105,875					6,642.01
326	West Branch, IA	15	14	DB	20,225					661.30

328 Vancouver, BC . . .	0	140	0	1,500		30,467.00
332 Ripon, CA . . . . .	69	16	34.55	83,625		15,045.77
337 Fremont, CA . . . . .	23	9	32.01	15,625		172.09
339*Las Vegas, NV . . . .	13	1	DB	17,500		
340*Wood Dale, IL . . . . .	17	3	DB	224,000		
341*Kmblltn-Elkhorn, IA	31	118	DB	45,500		
342 Bucks Co., PA . . . . .	46	20	DB	62,250	385.00	9,503.76
343 Waupaca, WI . . . . .	2	61	DB	26,000		1,185.97
344*Janesville, WI . . . . .	14	26	DB	33,500		
345 Orange Co., CA . . . . .	50	50	DB	136,000	646.35	4,693.06
346 Riverside, CA . . . . .	25	21	DB	37,240		5,359.29
347 Cedar Rapids, IA . . . .	18	43	DB	42,000	300.00	860.00
348 Eugene, OR . . . . .	46	51	DB	233,625		3,316.56
349 Atlantic, IA . . . . .	0	43	DB			165.71
600 Omaha, NE . . . . .	1,505	72	DB	4,276,347		

**NOTES TO ANNUAL REPORT**

\*The report for 1986 was not received, or was received too late. Secretaries

who find an asterisk (\*) after their lodge number are asked to submit their 1986 report to the Home Office as soon as possible.

"DB" All lodge members are on direct billing.

The above listing gives 125 lodges, membership consisting of 6,899 insured and 3,157 social; a total monthly assessment of \$2,507.68 and a combined amount of insurance of \$15,273,769. Insured and social membership is 10,056.

Lodges reporting for 1986

Paid fraternal benefits . . . . .	\$ 29,910.81
Cash and other assets . . . . .	\$1,415,954.34

The total of insurance assessments paid to the local lodge treasurer not yet remitted to the Home Office is not included in total assets as reported on the annual lodge report. All such assessments must be accounted for, and belong to the Home Office. However, all other assets belong to the local lodge and the Home Office has no claim on these.

The average insured age attained as of December 31, 1986 is 51.

JEROME L. CHRISTENSEN  
Secretary-Treasurer

# The Danish Immigrant Museum - Elk Horn, Iowa

## by June Sampson and Clark Rasmussen

### Introduction:

Let us trace the progress of an immigrant from his home in Denmark, to the steam ship in Copenhagen harbor, across the north Atlantic, through New York and then cross country by train to a destination where he will create a new life. It is a long, hard journey. The hardest part would be making the decision to leave and saying goodbye to dear family, friends and country. If we compare the Danish Immigrant Museum's progress to an immigrant's journey, the Museum has come through the toughest part of the trip. We have made the decision to leave and are standing on the dock in Copenhagen. There is a long way to go, but the following is a brief account of how far we have come.

### Background:

Danish immigration to the United States peaked in the years between 1880 and 1914. By 1980, consequently, the Danish community in the United States had seen the majority of the generation of immigrants from this flood pass away. Danish Americans were struck by their loss, as it was not only personal but also cultural and historical. Without these parents and grandparents, their own past was also lost for they had lost the stories, memories and special experiences that only these immigrants could give. In a sense the community's memory had died. What was to take its place? How was their story to be preserved? Were the last traces to disappear also?

Acting on this sense of urgency a committee of committed people, many already involved with Danish institutions and organizations, was formed at the suggestion of the Danish American Heritage Society. This committee first explored what colleges and societies already existed to learn if they could undertake the task of saving Danish American heritage. Efforts had been made especially by clergy in the late 19th century to preserve the bi-cultural values in younger generations. Seminaries, church related colleges such as Dana College and Grand View College in Des Moines, Iowa and folk schools had all been a part of their effort. Their efforts to preserve immigration history, however, had been limited to collecting archival and library materials. Church affiliation also meant that constituencies or audiences were often limited. The Committee soon realized that there had not been a systematic effort to preserve the material culture of the Danish immigrants, and their recommendation was to begin immediately a museum separate from schools, churches or fraternal organizations to preserve and interpret the artifacts and traditions of Danes of North America.

### Organization:

The Danish Immigrant Museum was "founded" without a collection or a location that is called home precisely because of the urgency seen by this original committee. The committee was quickly re-formed as a Board of Directors with bylaws and articles of incorporation, as a non-profit educational institution. With help from museum consultants, the Board wrote a purpose that brought into sharper focus the Museum's goals and reason for being:

The Danish Immigrant Museum will tell the story of the Danish American experience and is organized to collect, preserve, study and interpret artifacts and traditions which express the experience of Danes in America.

In 1983, Elk Horn and Kimballton, Iowa were selected as the site for the museum. Here was an area with a high concentration of Danish Americans who were anxious to work for the Museum and make it a success. The Museum could be a "jewel," that stood out in these small towns just off a major east-west interstate highway, rather than one more cultural institution in a larger city. The enthusiasm in Elk Horn and Kimballton continued and land for the building site was donated. It is a piece of Iowa's rural landscape at its best, reminiscent of parts of Denmark with a panorama of gently rolling hills sloping away from the twenty acre site.

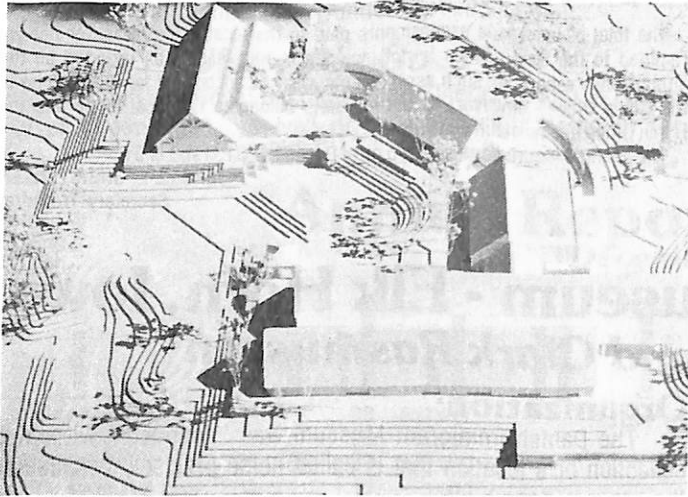


Architect's drawing shows the future Danish Immigrant Museum.

### Collections and Building:

With the purpose as a general guide, the Board adopted a collection policy that outlined the priorities for the collection. The emphasis is on the first generation of Danes who immigrated: what they brought with them and what they made and used in North America. Since immigration continues, both historic and contemporary artifacts are accepted and sought.

To meet the needs of preservation and especially interpretation of the artifacts and traditions, a contemporary museum facility has been designed. Board and staff shared their dreams of exhibits, programs, reference collections and meeting areas with architects to create a building reminiscent of a Danish farm, but American in style. In short, it is a Danish American design just as the exhibits and programs will be.



This model represents months of collaboration by Museum committees and the architectural firm of Astle/Ericson.

The research and design of the exhibits are paralleling the development of the schematic drawings and engineering plans for the building. Although thousands of artifacts have already been donated to the Museum, as plans proceed for the exhibits gaps may appear. Then Museum staff and volunteers on the local area committees will search and appeal for the objects that will fill in the important chapters of the story of the Danish American experience.

Artifacts for exhibits are, of course, not the only resources that will be needed to create the Museum. A capital fund drive is underway after careful planning with the assistance of a special consultant. The drive has begun with the formation of volunteer committees which will direct and service the international campaign efforts. The Ad Hoc Steering Committee is made up of members for the Board of Directors and Advisory Council: Signe T. Nielsen Betsinger, St. Paul; H. Rand Petersen, Harlan, Iowa; Earling V. Jensen, Des Moines; and Judy Andersen, Los Angeles. People with a special expertise in finance and management are acting as Treasurer and the Audit Committee: Kenneth Andersen, Treasurer, Edina, Minnesota; Harry Jensen, Des Moines; Raymond Johnson, Elk Horn; and Arnie Leistad, Atlantic, Iowa. Other committees include Public Relations, Honorary Endorsers and Promotional Materials.

Contributions and pledges solicited over the coming year will allow the Museum to undertake Phase I of the building. Exhibits, meeting room, offices, gift shop and kitchen are all part of the first phase and will combine to make a fully functioning facility.

The Danish Immigrant Museum's goal is to create a museum and building with the same warm and hospitable atmosphere of a Danish home — a place to enjoy and a place to learn, open to all. The Museum invites all to help to create this home to save Danish American heritage and to share it with others.

To those of you who will be traveling by car from the west to attend the Joint National Convention of The Danish Brotherhood and Danish Sisterhood in America in Des Moines September 24-26, you won't want to pass up the opportunity to visit "A little bit  
Page 10

of Denmark" in Elk Horn and Kimballton just seven miles off of Interstate 80 and about 80 miles west of Des Moines. Elk Horn has a Danish Mill and Kimballton a mermaid, both from Denmark. Additionally, there are many nice Danish shops and food, plus the people with deep roots to the Fatherland. To others, you may want to travel to the area from Des Moines during your stay here and see the beautiful sites and the future home of the Danish Immigrant Museum.

## *In Search of an Honest Man*

A Danish Folk Tale

by Beverly Swerdlow Brown

*Once upon a time a man stole an old smoking pipe. The authorities found out, caught him and threw him in jail without any trial or hope of getting out legally or otherwise.*

*One day, the man thought of a scheme to get himself out of prison. He requested an audience with the King because he had a special gift that he could only give to the King.*

*When he was brought before the royal highness, the King said, "Why do you want to see me?"*

*The poor man told him that he had in his pocket a seed of a pear tree that would grow to produce golden pears if the King planted it.*

*The King looked surprised. "Why didn't you plant the seed yourself and become rich?"*

*The poor man said, "I am a thief, and in order for the seed to grow an honest man must plant it, and of course, you are the most honest man of all."*

*The King thought about it and knowing that he wasn't all that honest requested his prime minister to plant it.*

*The prime minister thought about it and requested that the scribe plant it.*

*The scribe thought about it and requested that the logician plant it, who in turn passed it on to someone else, who in turn passed it on to someone else and so on . . . until the seed came back to the thief again.*

*He started to laugh and said to the King, "I stole an old smoking pipe and you put me in jail forever, while you people, who knows what you have stolen!"*

*The King thought that what the thief had said was very true and even started to laugh himself so he pardoned the poor man for his misdeed.*

**COIN COLLECTION.** Rare Coins. Learn how to make huge profits in rare coins. The only rare coin, MLM, program in the country. Send \$10 for tape and full details. 100% refundable. **Clarence Barnett, 717 E. Park Ave., Gastonia, NC 28054** (Gastonia).

# Recommender of the Year Announced



Left to right: William Atkinson, Assistant Principal; Dr. Richard Wilgoren, Principal; Charles Thygesen, Sr., Gregg's father and President of Lodge No. 294; and Harry Mikkelsen, "Recommender of the Year."

Congratulations to Harry Mikkelsen of Lodge No. 294 in Barre, Vermont, who was declared "Recommender of the Year" by sponsoring 7 new Danish Brotherhood members.

In keeping with the membership campaign of "It's Better to Give Than to Receive," Mr. Mikkelsen appropriately donated his award of \$300.00 to the Gregg Thygesen Athletic Scholarship Fund.

Gregg Thygesen, a past member of the Danish Brotherhood, passed away at the age of 24 as a result of a tragic automobile accident. Gregg was known for his athletic abilities, being a star hockey player at Spaulding High School and the University of Vermont. Upon acceptance, Dr. Richard Wilgoren, Principal of Spaulding High School, thanked Mr. Mikkelsen for his gift and stated, "Your generosity will allow Spaulding athletes to pursue

further education just as Gregg did." On hand for the presentation ceremony was Gregg's father and President of Lodge No. 294, Charles Thygesen, Sr.; Principal, Dr. Richard Wilgoren; Assistant Principal, William Atkinson; and "Recommender of the Year," Harry Mikkelsen.

Mr. Mikkelsen would like to thank all members of Lodge No. 294 for their contributions and cooperation. We would like to thank you, Harry, for adding to our large chain of members.

## Host Families and Students Sought for Exchange Program

Host families are being sought for 25 high school students from Sweden, Norway, Denmark, Finland, Holland, Belgium, Austria, Switzerland, Germany, Spain, France, Italy, Ecuador, Australia, and Japan for the 1987-88 school year in a program sponsored by the American International Student Exchange (AISE).

The students, age 15 through 17, will arrive in the United States in August, 1987, attend a local high school, and return to their homes in June, 1988. The students, fluent in English, have been screened by their school representatives in their home countries and have spending money and medical insurance.

AISE is also seeking American high school students, age 15 through 17, who would like to spend a high school year in Sweden, Norway, Denmark, Germany, Switzerland, France, Spain, or Australia or participate in a five week summer host family stay throughout Western Europe.

Families interested in this program should telephone toll free: 1-800-227-3800.

### Larsen Bros. Danish Bakery

8000 24th N.W., Seattle, WA 98117 — (206) 782-8285

#### Danish Coffee Cake

PACKED 1 PER BOX

**Kringle . . . . . \$7.50** Filled with Almond Paste and Raisins

**Smørkage . . . \$5.20** Filled with Custard Almond and Raisins

..... Includes packing and UPS service in continental U.S.A. ....

Quantity \_\_\_\_\_ Price \_\_\_\_\_  
\$ \_\_\_\_\_

To \_\_\_\_\_

Street \_\_\_\_\_

City \_\_\_\_\_ State \_\_\_\_\_ Zip \_\_\_\_\_

Sign Gift Card as follows: \_\_\_\_\_

## Danish Antiques

P.O. Box 51, DK 9670 Løgstør, Denmark

1987 B&G Children's Day . \$21	1986 B&G Xmas Ornament . \$18
1986 B&G Children's Day . \$17	1985 B&G Xmas Ornament \$16
1985 B&G Children's Day . \$14	1986 RC Xmas . . . . . \$32
1986 B&G Xmas . . . . . \$32	1985 RC Xmas . . . . . \$25
1985 B&G Xmas . . . . . \$25	1987 RC Mothers Day . . . . \$26
1987 B&G Mothers Day . . . \$22	1986 RC Mothers Day . . . . \$22
1986 B&G Mothers Day . . . \$18	1987 RC Xmas Cup & Saucer . \$38

**MONEY BACK GUARANTEED**

All years available. Ask for FREE PRICE LIST. All plates mint. Boxed. 1st Class. Insured. Surface mail \$2½ each. Air mail \$4½ each item. Payment: Money order, cashiers check or personal check.

Read About Today's Denmark

# Den Danske Pioneer

SINCE 1872

Send for a sample copy.  
The Danish Pioneer is written in  
both English and Danish.

\*If you already receive the paper,  
mail us the name of a friend or relative  
you believe would be interested in  
The Danish Pioneer

Advertise in Den Danske Pioneer -  
"Det betaler sig."

**Chris Steffensen, Editor**  
**Bertelsen Publishing Company**  
1582 Glen Lake Road  
Hoffman Estates, IL 60195  
(312) 882-2552

# Our Lodges in Action

Material for publication must be received at the Danish Brotherhood in America National Headquarters, 3717 Harney Street, Omaha, NE 68131 by the tenth of the month preceding month of issue.

The American Dane is mailed by the sixth day of the month.

The magazine reserves the right to edit material accepted for publication.

## PACIFIC-NORTHWEST

**Lodge #29, Seattle, WA** — Honor be to the memory of Alfred Truelsen who passed away January 27, 1987. Alfred was a member since 1923.

The Joint Installation of Officers for our lodge and the Danish Sisterhood Lodge No. 40 was held at the Sant Point Officers Club, Saturday, January 24. It was somewhat sparsely attended but it was a nice party for the ones who were there. We enjoyed a very excellent dinner, and following the installation, there was dancing. Danish Sisterhood District President Lis Christensen and Danish Brotherhood District President Karen Bruun officiated at the installation. Thanks to all who helped!

At our February 4 meeting, the following delegates were elected for the District Convention in May at Spokane, Washington: Paul Hansen, Craig Emmick, Mads Mauritsen, and Mel Hollister. Alternates are Flemming Sorensen, Hans Nielsen, Per Larsen, and Ted Kofoed.

We are happy to report that the nominee for the "Howard E. Christensen" Award of our lodge is Gunnar Sorensen; an honor he fully deserved. No one, more than Gunnar and his wife, Else, has contributed more to our lodge and all other Danish organizations in Seattle, and also reaching out to individuals.

At our last meeting, several of our members brought food items in a can in cooperation with Operation Care and Share. Martin Rasmussen has volunteered to take them to one of the food banks. Thank you, Martin. This is an ongoing program, so let us keep bringing something every time we have a meeting. The need is great!

Spokane is gearing up for the 1987 Northwest District Convention to be held on May 1-3 at the Red Lion Motor Inn.

**Ted Kofoed, Cor.**

**Lodge #167, Portland, OR** — The February 4 meeting was called to order by President Asbjorn Fisker with 37 members present.

We are pleased to initiate new member, Vance Petersen, of Cornelius, Oregon. The initiation of new members is held every

The best idea for April goes to Lodge No. 143, Petaluma, CA. See page 13 for details.



Welcome new member, Vance Petersen.

other month in our lodge. President Asbjorn Fisker presided over the ceremony and Norman Powell was Conductor.

Correspondence was shared from Ross Fogelquist, thanking the lodge for the \$150 contribution to the PSU Scandinavian Studies program and all our hard work at Scanstef.

Jens Jensen introduced a guest, Jack Kramer, a retiree from Bonneville now living in Portland. He has applied for membership in our lodge.

May 1-3 is the date for the District Convention in Spokane. We have also been invited to participate in the Starlight Parade and it has been approved by the Nordic Council.

July's regular meeting will be seasoned with hot dogs. July 19 is Folkfest. Don Bogn brought us up to date on this event. KGW and one of the utility companies will be helping us in promotions. We will get good publicity for this fun event.

Jens Jensen introduced two gentlemen from Denmark, Jackie Birk from Hundested in Sjælland; and Stig Tuck from Odense on Fyn Island. They are working at Scan Design and love being in the USA. They displayed clogs from Denmark after the meeting.

Operation Care and Share was encouraged by President Fisker. We need a chairperson and good support for this caring ministry to people in need.

**Sylvia Hurst, Sec.**

## PRESIDENT'S AWARD BEST NEWSLETTER

**Lodge #328, Vancouver, B.C.** — We will again this year participate in the Dragon Boat Race with the Vikings Team, sponsored by our lodge. The races will be on the weekend of June 20-21, at False Creek. There will be practices prior to the races. If you have not already signed up on the team as of yet, you can still do it. If you are interested, please contact Herluf Pedersen or Peter Praegel.

At our last meeting, there were 59 members present. Four new members were installed into our lodge. Welcome to Carl Madsen, Jorgen Pedersen, Kaj Jensen, and Kalle Moser. Also at the meeting, we accepted two new applications from Erik Sorensen and Steiner Ericson.

During the meeting, we elected Peter Praegel, Peter Jensen, and Elith Marcussen to be our delegates to the Pacific Northwest District Convention in Spokane on May 1-3.

We received a thank you letter from Mrs. Vernon Tryson, thanking us all for attending Vernon's funeral.

It was reported that the Soccer Club has received a sponsorship in the amount of \$1,000 from Gunnar Madsen, Canadian Process and Control Ltd.

After the meeting, we were lucky enough to buy sandwiches, beer, and, of course, snaps.

**Lodge #348, Eugene, OR** — President Paul Olesen called our January 8 meeting to order with 34 members present.

After the meeting the program and coffee committee presented a film about some of the Danish castles with narration by Queen Margrethe and Prince Henrik. After the film, fine Danish aebleskage and cookies were served.

A report about the Christmas party written for publication in the American Dane was read by Martin Taekker. About 90 people attended the fine evening.

The February meeting was called to order by our new President, Niels Nedergard, with 40 members present. A list of committees appointed at the February Board meeting was read.

The 1988 Northwest District Convention

will be hosted by our lodge on May 20-22, 1988. Lois Toftemark has agreed to take on the chairmanship, and asked for every member's willing cooperation and assistance as the plans take shape.

President Nedergard proposed that there should be a 25 cent fine for failure to wear their DBIA pin to meetings. Knud Toftemark was delegated as enforcer of this "new ordinance." Another proposal was made to reduce the business meetings from 11 to 10, deleting July and August. After discussion and a review of the bylaws to verify that it was legal, the recommendation was unanimously accepted.

During the social hour, Knud Toftemark shared with us slides of his hunting trip to Scotland and a trip he and Karen took to Portugal. Birgit and Kris Sand and their committee served coffee and several delicious desserts.

A local elementary school requested a short presentation for their "Danish Days" on February 26. Karen Toftemark and Christa Christensen presented a program of history and customs of early Denmark and displayed a number of interesting Danish items. They also had a big map of Denmark and a world map to show Denmark's location. They had two groups of children who enjoyed their presentation and the Danish anthem sung by Christa.

Thanks to Karen and Christa for going in costume and giving the children a glimpse of Denmark.  
Verna Lyngge, Cor.

## CALIFORNIA-NEVADA

**Lodge #95, Ferndale, CA** — We held an aebleskiver brunch at the Danish Hall in Ferndale to honor the following Past Presidents: John Henriksen, Niels Sovndal, Niels Dyhrberg, Jens Thomsen, Herman Bertelsen, Francis Sweet, Fred Elliott, Ken Sanborn, Aaron Matyshock, Glenn Martella, Lorana Sweet, Daniel Barney, Laszlo Lesku, Clara Sherrill and Frank Latham. Special thanks to Lorana Sweet and her kitchen crew.

**Lodge #143, Petaluma, CA** — We held our installation of new officers jointly with Danish Sisterhood Lodge No. 126 on January 31. This took place at Green Mill Inn, with installation ceremonies starting at 5:30 p.m., followed by Happy Hour and dinner. There was an attendance of approximately 80, and we were pleased to see so many out-of-town guests who had come to support us. We were proud and happy that California-Nevada District President Ed Madsen of Solvang was present to install our new officers. Acting as Conduc-

tor for the evening was California-Nevada District Past President, Dan Mogensen, of Fresno. The officers were escorted by two lovely members of the Sisterhood Drill Team, namely Dorothy MacKinnon and Lydia Hansen, and we appreciate being guided by them.

Preceding the installation ceremonies, three members of the Youth Group, Joyce Miller, Jennifer and Kat Mason, led us in the Pledge of Allegiance, following which Joyce made a speech of presentation — the two beautiful new flags, American and Danish. During various functions over the past several years, the Youth Group noticed that our flags needed to be replaced, and this became a project for them. We are moved to think that they would support us in this manner and express "Mange Tak" to them for their love and pride.

Taking office for 1987 are the following: Past President, Harvey Rasmussen; President, Dick Hansen; Vice President, Jim P. Larsen; Trustees, Jim P. Larsen, Iven Iverson and Harvey Rasmussen; Secretary, Hank Brown; Treasurer, Walt Miller; Conductor, Frank Taddei; and Guard, Clifford Yarian. Following the installation ceremonies, a 25-year pin was presented to Brother Hank Brown.

We were all saddened when our good

\*\*\*\*\*



**DK BIEN**

**GRATIS**

til alle nye abonnenter

I would like to order "Bien" and enclose a \$15 check for a one-year subscription. Mail to "Bien," 4540 Hollywood Blvd., Los Angeles, CA 90027.

Name .....

Address .....

City and State ..... Zip .....

Please send "Bien" to above address and send me free of charge a colorful DK decal.

\*\*\*\*\*

**DANISH KRINGLE,**  
the pride of Racine, Wisconsin



1841 Douglas Avenue  
Racine, Wisconsin 53402

**ORDER Toll Free: 1-800-227-6665**  
(In Wisconsin): 1-414-637-8895

**10 delicious flavors to choose from**

<input type="checkbox"/> Almond	<input type="checkbox"/> Cherry	<input type="checkbox"/> Raspberry
<input type="checkbox"/> Apricot	<input type="checkbox"/> Blueberry	<input type="checkbox"/> Prune
<input type="checkbox"/> Apple	<input type="checkbox"/> Chocolate (\$1.00 extra)	
<input type="checkbox"/> Pecan	<input type="checkbox"/> Almond Macroon (\$1.00 extra)	

1 Kringle/box-shipped UPS ..... \$ 7.00  
 2 Kringle/box-shipped UPS ..... \$10.50  
 1 Kringle/box-shipped Air UPS ..... \$ 9.00  
 2 Kringle/box-shipped Air UPS ..... \$13.75

Brother Walt Miller suffered a stroke at his home, but we were very happy to see him at our installation ceremonies, doing well. He was given a standing ovation, with love and warm wishes. Unable to attend because of a recent heart attack was Brother Frank Taddei. We all signed a get well card for him which his wife, Pat, took home. Of course, we wish Brother Frank only the best of health.

**On Sunday morning approximately 25 of us attended a send-off breakfast for our out-of-town guests at the Adobe Room, a popular tradition which started several years ago. Ed and Betty Madsen had rented a plane which he piloted into our local airport, and following the breakfast, several of us drove to the airport to wave goodbye as Ed dipped the plane's wings to us.**

On February 15, all officers of local Danish Brotherhood and Danish Sisterhood lodges met at the home of Hank and Inga Brown to make plans for the ensuing year. Please watch your American Dane for results of this meeting. We look forward to a full and productive year.

**Alice Rasmussen, Cor.**

**Lodge #299, Solvang, CA —** Our new president, Bent Pedersen, presided very well over his first meeting on February 11. Another first in my recollection was the well known and very tasty Danish dinner, "Gule aerter med Hamburgerryg," very well made and served by Poul Dalby and crew, which was enjoyed by 50 members and guests and received with acclamation.

A card was signed by the members and forwarded to Jack Nedergaard who had been in the hospital. Bent Pedersen appointed a new scholarship committee: Johannes Jaeger, Ed Madsen, Peter Weber, Andy Andersen, and Bent Pedersen. The reason being a request for establishing of a new scholarship criteria.

Johannes Jaeger submitted the following reports: (1) that our National Law Committee indicate any changes or additions proposed; (2) a brief discussion and explanation on the progress of our local Danish Historical Museum; (3) information received from Ken FitzGerald that the flagpole project should have been complete with the flying of the Danish flag by March; and (4) that due to a slight hitch in the planning of the installation, the Brotherhood will pay the entire cost.

Bent Pedersen said that no final plans for the upcoming visit of the Danish Boys Choir had been made yet. He also mentioned the camp grants and scholarships for Skovsøen which are available.

It was, on Peter Weber's initiative,

decided to split the cost of a one-half page ad in the National Convention Program Booklet, with the Sisterhood. It was likewise, as suggested by Ed Madsen, decided to have our new local bylaws brought up to date and printed in English only by the committee of Johannes Jaeger, Peter Weber, and Bent Olsen.

Finally, on Ed Madsen's initiative, Johannes Jaeger was congratulated and applauded on behalf of his presidency and his involvement as chairman of the convention committee during the last year.

**Jacob Ravn, Cor.**

**Lodge #306, San Diego, CA —** Gail Perkins and Karen Suda have been working hard on behalf of the Brotherhood lodge and have a lot of exciting things and ideas to report about the upcoming District Convention. We would appreciate anyone's "positive" ideas and comments.

For anyone who would like to help out on a certain committee, please call Johanne Chapin. So, if you have any ideas, start writing them down.

**Lodge #319, Bakersfield, CA —** Sixty-seven members and guests attended the joint installation dinner/dance of our lodge and Danish Sisterhood Lodge No. 168 on February 6 at the Casa Royale. A champagne social preceded the delicious dinner. Owen Nelson, Jr. was dinner chairman.

Ed Madsen of Solvang, State President, installed the following Brothers: Past President, V. E. "Pete" Peterson; President, Bill McDonald; Vice President, Verner Stenderup; Secretary, Jacob Jeppesen; Treasurer, Erik Michelsen; Conductor, Owen Nelson, Jr.; Trustees, Louis Jacobsen, Viggo Stenderup, Elton Nelson; and Guard, Raymond Sprehn. Karen Rowse was installing conductor.

Dancing to music by Bob Fowler followed with a coffee and cookie break.

A beautiful hardanger cardtable cloth, hand-embroidered and donated by Frida Stenderup, was won by Sally Schultz.

Out-of-town guests included Betty Madsen, Solvang; Sylvia Lindquist, Santa Barbara; Mabel Petersen, Storm Lake, Iowa; Inge Schoinning's daughter Susan of Mojave; Dick Rowse; Jack and Joyce Nielsen, Jack and Sally Schultz and Miles and Joanne Thomas, all of Arvin.

During the past year we held our Spring Breakfast, played bunco for fun, celebrated St. Hans with a picnic, honored our new members with a "dinner out," had an ice cream social, attended a melodrama where we cheered the hero and booed the villain, enjoyed a fall barbecue and a

Danish dinner of medisterpølse and trimmings and observed Christmas with a party for adults and children.

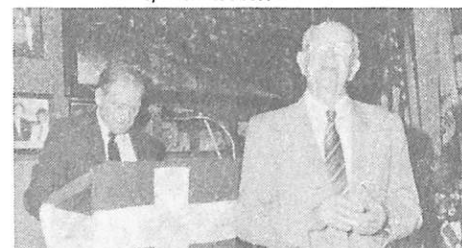
**Dorothy Peterson, Cor.**

**Lodge #322, Santa Barbara, CA —** Our lodge and the Danish Sisterhood Crown Princess Ingrid Lodge No. 165 in Santa Barbara, held a joint installation party at Harry's Plaza Cafe on February 7. The Brotherhood installed the following officers: President, Helge Hansen; Vice President, Harvey Jensen; Secretary-Treasurer, Carl Lauritsen; Conductor, Erik Herner; Inner Guard, Eigil Hampen; Outer Guard, Henning Jensen; and Trustees, Edward Aasted and Eugene O'Brien. Arne Johansen was honored as the Past President.

The installation ceremony was conducted by Edward Madsen and Karen Rowse, district officers of the Brotherhood, and Sylvia Lindquist, State President of the Sisterhood, installing officer, and Karen Petersen, Marshal.



**Our President, Helge Hansen, welcomes District President, Edward C. Madsen, and National First Vice President, Peter Weber.**



**Harold Hansen of Minden, Nevada received his 50-year pin.**

Peter Weber, National First Vice President of the Brotherhood presented a 50-year membership pin to Harold Hansen. Mr. Hansen now lives in Minden, Nevada, and we were glad he could come back for the occasion. William Lindwall was unable to be present to receive his 25-year pin.

Fifty-seven people attended the installation and partook of the delicious tri-tip dinner. Viktor and Inge Jeppesen provided the music for an enjoyable evening of dancing.

The Brotherhood was saddened by the passing of Emil A. Christensen on January 31. He was 92 years old and had been brought to America from Copenhagen when he was a year old. He had been a member of the lodge since 1947. **Carl Lauritsen, Sec.**

**Lodge #323, Alhambra, CA** — We extend an invitation to Brotherhood Lodges Nos. 126, 345, 346, and Sisterhood Lodge No. 68 to attend our Progressive Dinner on April 25 in the Arcadia area. This will be a fun-filled event that you don't want to miss. Please forward reservations to John Kristensen, Karen Rowse or Inger Dix by April 22. Twenty-five year pins will be presented to Bea Jepsen and her four daughters at the dinner.

Twenty-five year pins will also be presented to Kathryn and Henry Hansen of Provo, Utah, by Gunnar and Evelyn Hansen. **Kate Krake, Cor.**

**Lodge #332, Modesto, CA** — The February 20 business meeting was called to order by President, John Craig. It was decided to postpone our installation ceremony until July which will take place in Tahoe at our annual 4th of July weekend party. By unanimous vote, our 1986 officers were elected for another term. Thank you, kind members, for agreeing to serve another year. These members are President, John Craig; Vice President, Ebba Norby; Secretary, Vernon Olsen; Treasurer, Regnar Hansen; Conductor, Bob Sorensen; Outer Guard, Marge Scheuber; and Inner Guard, Gunver Olsen.

Our plans for the year were discussed. Gunver Olsen and John Scheuber are busy working on some exciting activities.

We are proud to hear that Gitte Norby, one of our young members participated in a week-long trip in February to Washington, D.C., along with students from all over the United States to learn more about our government. What a great experience! We are anxious to hear about it, Gitte.

**Marge Scheuber, Cor.**

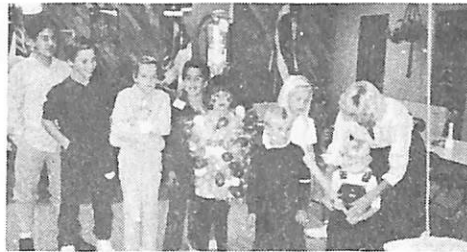
**PRESIDENT'S AWARD  
BEST NEWSLETTER**

**Lodge #345, Orange County, CA** — We want to thank our chairmen of the November lodge meeting. Helga and Kaj Bjorn did an excellent job decorating the hall and making Fastelavn such a lot of fun.

Each month members are asked to host



Congratulations to Cat King and Queen, Ryan and Gerry Olsen.



Our Young Vikings were ready to smash the cat out of the barrel.

the social portion of the lodge meetings and do such a great job; sometimes we neglect to give the proper thanks. The job involves putting together all that is needed that evening, the door prize, refreshments and, of course, the particulars of the evening's entertainment.

The new Board was welcomed by Howard Kjellsen with wishes for a successful year. President Jim Dwyer made the statement that a good year depends upon the efforts of the entire membership.

We have a lot of activities planned this year, and to make it successful, will take the cooperation of all of us. Each one's



The officers for 1987 are prepared for an exciting year.

**VELKOMMEN!**

We have added more links to our chain — a chain of people who have joined hands promising to stand by each other.



Name	Lodge No.	Location	Sponsor
James E. Rush	14	Kenosha, WI	Dan Greenwald
Hans Matthiessen	14	Kenosha, WI	Berger Rasmussen
Robert A. Moehrke	14	Kenosha, WI	Dan Greenwald
Linda Steffensen	17	Chicago, IL	Albertice Nylen
Martha J. Christensen	35	Chicago, IL	Carl A. Christensen
Richard S. Jensen	35	Chicago, IL	Kathy Jensen
Kristopher L. Jensen	35	Chicago, IL	Kathy Jensen
Lyles R. Permber	39	Oakland, CA	John Mottoros
Theodore A. Herold	46	Perth Amboy, NJ	George Ferdinandsen
Karla M. Krampert	167	Portland, OR	Roy Petersen
John M. Overson	167	Portland, OR	Jens N. Jensen
Nancy L. Parker	167	Portland, OR	Jens N. Jensen
Stig Tuck	167	Portland, OR	Mel Pihl
Jack J. Kramer	167	Portland, OR	Alice Hazlet
Valdemar P. Johansen	219	Clear Lake, IA	Thorvald Sorensen
Evalee R. O'Toole	219	Clear Lake, IA	Thorvald Sorensen
Marlene J. Curtis	219	Clear Lake, IA	Thorvald Sorensen
Ray A. Curtis	219	Clear Lake, IA	Thorvald Sorensen
Harry M. Langsford	227	Detroit, MI	Paul Carlsen
Simeon "Bud" F. Taylor	261	Fowler, CO	Jay Fosdick
Danielle D. Christiansen	294	Barre, VT	Edith Mikkelsen
Charles T. Thygesen, Jr.	294	Barre, VT	Edith Mikkelsen
Karen Witt	325	Nassau County, NY	Niels B. Hansen
Kaj Jensen	328	Vancouver, B.C.	Tom Johansen
Erik T. Hansen	328	Vancouver, B.C.	Peter Jensen
Kalle Moser	328	Vancouver, B.C.	Finn Sorensen
Douglas Bendsen	328	Vancouver, B.C.	Chris I. Bendsen
Claus Larsen	328	Vancouver, B.C.	Jorgen Larsen
Carl-Johan Madsen	328	Vancouver, B.C.	Jan Nielsen
Winford G. Mabery	343	Waupaca, WI	Margaret A. Miller
Doris L. Mabery	343	Waupaca, WI	Margaret A. Miller
Diane Kay Lundberg	600	Omaha, NE	David Lundberg
Janice M. Johnson	600	Omaha, NE	Robert Ibsen
Russell H. Lange	600	Omaha, NE	Ray L. Johnson
Gunnar S. Jensen	600	Omaha, NE	Charles D. Jensen
Joan Lange	600	Omaha, NE	Ray L. Johnson

**It's Better To Give Than To Receive**  
New members can add to our chain, too!

attendance is important. If you have ideas that you think would be beneficial to our lodge, bring them up at the meetings. The Board really want to know the wishes of our membership.

We were happy to have several visitors with us who were introduced by members.

It was decided to buy an ad in the program book for the National Convention that will be held in September in Des Moines, Iowa, and also an ad in the program book for the District Convention in July in Riverside, California.

Several letters were read for the information of the membership; one on the unavailability of liability insurance.

The National Handicap Bowling League captain will be Cal Christensen. Toni Gossett, Chairperson of the Vikings, will also see if the Vikings can have a league this year.

Howard Kjellsen, chairman, explained Operation Care and Share to the lodge and suggested that we help the Orangewood Home, a home for abused children. He will contact the home and find out their needs and where we can most effectively help them. We will be talking about this program throughout the year, and we will get well acquainted with the out-reach of Operation Care and Share.

We have lots of fun things planned for our next meeting. One is a silent auction. The Vikings really like this social. Everyone who can, should bring special items. Find something that you think someone would bid on, bring it with you to the meeting, and we bid silently on it. All proceeds go into the treasury.

Before we have the silent auction, we are going to have a potluck dinner. We ask that each family bring one main dish, and either a salad or dessert. Be generous in the size that you bring, so there will be enough. A dinner is always a good meeting to invite friends to. Everyone likes to eat good Danish food.

**Gerry Olson, Sec.**

**Lodge #346, Riverside, CA** — Twenty-three members and guests attended our last meeting, which was conducted by Past President, Knud Andersen, due to the temporary illness of President Anelise Andersen. Knud presented a certificate and \$30 check to Nancy Nielsen for winning third place in the 1986 National DBIA Photo Contest. The winning picture was taken during our St. Hans Weekend Campout and showed Kodan members parading Wanda, the Witch, to her doom at the fire ring. It's wonderful for Kodan to receive recognition at the national level. All of us then shared pizza and participated in a spirited silent auction raising more than

\$80 for the treasury. Thanks to everyone for their creative contributions to the auction and to all the eager bidders for their generous bidding. It was fun and everyone took home a bargain.

Thirty-six members and friends signed up for our recent Day at the Santa Anita Races. Several had "beginner's luck" and made it back home with more than their shirts. I've been told that Kaja Del Grippo is now hooked and can't wait to go back again! Thank you to Knud Andersen for calling the bus bingo numbers; Kaja Del Grippo, Norma Loveday, Sue Patterson, and Anelise Andersen for the donated prizes; and the Del Grippos, Lovedays, and Pattersons for donating the bar supplies. And an extra big thank you to the Lovedays and Pattersons for arranging this trip!

Our good friends at Alhambra Lodge No. 323 have graciously invited us to attend their "almost annual" Progressive Dinner in the Arcadia area on April 25. And here's the wonderful part: from each ticket sold, Lodge No. 323 will contribute \$2.00 to help with our convention expenses. Now, that's what I call Brotherhood! Let's see as many Kodan members as possible support this activity.

**Nancy Nielsen, Sec.**

## **MONTANA**

**Lodge #273, Dillon, MT** — A potluck dinner took the place of our regular February meeting. It was attended by 42 members, friends, and children. We were entertained by Harmony Schindler with singing of two songs. Travis Barnes and Ryan Gaasch played several fiddle selections. Clifford Bay and Harry Abernethy brought the scrapbook they made for the lodge. The balance of the evening was spent visiting.

On Sunday, February 15, we held our Winter Frolic at Mohawk Camp, Clark Canyon Dam, south of Dillon. There were about 50 out for the event in spite of the chilly weather. They kept warm with homemade chili, hot dogs, coffee, hot chocolate and soft drinks. Children enjoyed playing on the lake and a few adults tried their luck in fishing. Thanks to the committee of Leonard and Hansine Hansen, Paul and JayLynn Hansen, and Fred "Buster" and Helen Brown for a fun afternoon.

**Harry Abernethy, Sec.**

## **NEBRASKA**

### **Nebraska District**

The Nebraska District will provide two scholarships of \$200.00 each. These will be awarded to students attending accredited schools during the 1987-1988 school year. Any member, regardless of

age, or a child of a member, may apply for one of these two scholarships. Applications must be sent to Paul E. Hansen, Scholarship Committee Chairman, RFD 1, Box 148B, Bennet, NE 68317, by April 25, 1987.

**Lodge #1, Omaha, NE** — On Tuesday evening, February 17, we met at Vennelyst Park for our regular monthly meeting. Following the business meeting, everyone enjoyed "Sla Katten Af Tønden." There were two barrels. Named Cat King and Queen were Dale Dorau and Bernice Eckley, who led us in the Grand March. We were honored to have as special guests, June and Earl Sampson of Elk Horn, Iowa. June is the Director of the Danish Immigrant Museum. The evening ended with everyone enjoying open-faced sandwiches, Fastelavnoller, and coffee. Donated cans of food, brought by members, were turned over to a local food bank.

The 105th anniversary dinner of our lodge will be held on Friday evening, April 10. It will be held at the Oak Creek Inn. Following the family style buffet will be music for dancing furnished by a German band.

**Jim Christiansen, Cor.**

**Lodge #206, Blair, NE** — All new officers are now installed and we are off to a new year. Those who were not present at our last meeting, missed a great evening. State President Bill Jorgensen, Jr., installed the officers with an impressive candlelight ceremony. As we enter the new year, let's try to invite some guests, this could lead to some new members. Do you know anyone wishing to take Danish classes? Annie Baelum of Dana College is ready to teach them providing we have a large enough group. The classes would be taught in homes as renting the Grange Hall would make it too expensive. The classes would be each Thursday evening for ten weeks at a cost of \$40.00 per student.

To kick off Operation Care and Share, each person is asked to bring one of the following which is needed: packages of Jello or pudding, canned fruit juices, peanut butter, tomato sauce, toilet paper or \$1.00 donation to our next meeting.

**Harriet Palle, Cor.**

**Lodge #211, Grand Island, NE** — Our lodge met Monday evening, February 9, at "Harriet's Place" in Dannebrog, Nebraska, for our monthly meeting. Forrest and Harriet Nielsen have recently opened a small cafe specializing in Danish food. All our members enjoyed a delicious aebleskiver dinner, cooked entirely by Harriet, with cream puffs for dessert. Following the



Forrest and Harriet Nielsen prepare the evening's meal.

business meeting, we enjoyed cards and fellowship.

For our March 9 meeting we met at the Blue Flame Room in Grand Island. After a short business meeting Ulli Skure, an exchange student attending St. Paul High School, showed slides and told about Sweden. She wore a native dress which had been made by her grandmother. A delicious lunch was served by Helen Johnson and Joy Holecheck.

## MISSOURI

**Lodge #56, Kansas City, MO** — Ruth and Otto Larsen celebrated their 56th wedding anniversary at the lodge meeting in February. Their family joined lodge members in recognizing this anniversary with a fine buffet dinner. Otto is the lodge secretary and Ruth has been active in the Sisterhood.



Otto and Ruth Larsen were our guests of honor on the occasion of their 56th wedding anniversary.

Following the dinner, Bob Wallace presented a program about Denmark and the Danish American immigrants. Lodge members were brought up to date on the progress of plans to establish the Danish Immigrant Museum.

The lodge is making plans to celebrate its 95th anniversary on April 18, 1987. The lodge was formed in April, 1892.

Lodge No. 56 members also participated



Norman Danielsen receives his medallion from Mayor Berkley.

in the Kansas City Annual Ethnic Enrichment Commission Banquet held February 21 at the Adams Mark Hotel. Over 35 ethnic groups were represented. Norman Danielsen, Lodge No. 56 President and Commissioner for Denmark, received his commission medallion from mayor Richard Berkley.

**Bob Wallace, Cor.**

## IOWA-MINNESOTA

**Lodge #15, Des Moines, IA** — James Einar Breining of Des Moines was accepted as a new member and will be initiated at a future meeting.

Margaret Gee will be our delegate to the National Convention in 1987 and Ed Harris is our alternate.



Congratulations Cat King, Jeff Christensen!

We had a wonderful Fastelavns celebration on Saturday, February 28 with 12 active children and 40 adults attending. Prizes were given for best costumes and Jeff Christensen made the final blow to "hit the cat out of the barrel" and wore the beautiful crown as king of the event. The

# Lest We Forget

In Grateful Remembrance Of Their Service and Fellowship, We Honor Those Members Who Have Passed Away Since The Last Report.

Date of Death	Name	Age	Birth Place	Lodge No.	Location	Year Joined
10-16-86	Einer Thorlund	85	Hasle, Denmark	70	Greenville, Montana	1946
12-24-86	Howard Raymond Sorensen	71	Hartford, Connecticut	314	Hartford, Connecticut	1942
1-17-87	Paul J. Gehrs	89	Copenhagen, Denmark	116	Newark, New Jersey	1947
1-26-87	Alfred E. Borup	87	Denmark	116	Newark, New Jersey	1944
1-16-87	Karl Andrew Nielsen	69	Penn Yan, New York	71	Penn Yan, New York	1951
1-28-87	Alfred Truelsen	85	Vedsted, Denmark	29	Seattle, Washington	1923
2-16-87	Elmer L. Fredericks	88	Big Rock, Illinois	51	Ludington, Michigan	1938
2-6-87	Herluf P. R. Herlow	85	Esbjerg Ribe, Denmark	600	Omaha, Nebraska	1921
2-8-87	Aksel Olsen	90	Hillerød, Denmark	64	Rockford, Illinois	1916
1-24-87	Richard S. Johnson	76	Oakland, California	39	Oakland, California	1938
6-30-86	Ejnar Knudsen	58	Burbank, California	126	Los Angeles, California	1961
1-31-87	Emil A. Christensen	92	Copenhagen, Denmark	322	Santa Barbara, California	1946
10-18-86	Myrtle M. Rasmussen	69	Drumheller, Alberta, Canada	206	Blair, Nebraska	1974
11-12-86	Rosa Krogh	80	Denmark	206	Blair, Nebraska	1966
12-24-86	Lars O. Thorsen	77	Flosta, Norway	206	Blair, Nebraska	1978
12-28-86	Carmen A. E. Thompson	82	Denmark	34	Dwight, Illinois	1978
2-7-87	Ann Johnson	84	Sweden	35	Chicago, Illinois	1985
8-26-84	Donald W. Finkle	71	Troy, New York	183	Troy, New York	1969
2-11-87	Chester M. Fonk	86	Paris, Wisconsin	14	Kenosha, Wisconsin	1980
2-6-87	Simon Fredericksen	76	Kenosha, Wisconsin	14	Kenosha, Wisconsin	1972
10-21-86	John E. Christoffersen	94	Perth Amboy, New Jersey	46	Perth Amboy, New Jersey	1985
1-29-87	Regina Krogh	91	Skellebjerg, Denmark	326	West Branch, Iowa	1965
2-20-87	Manard E. Larsen	65	Kenosha, Wisconsin	14	Kenosha, Wisconsin	1974
2-6-87	Ray C. Bogus	79	Ludington, Michigan	51	Ludington, Michigan	1978
2-3-87	Thorton N. Skibsted	62	Newell, Iowa	147	Newell, Iowa	1978

committee, Harvey Andersen, Doug Lary, Ray and Barbara Bartlett, did a very good job and we thank them!

Committees for the National Convention are busy planning and we hope to see many of you here in Des Moines in September.

**Mary Ribber, Cor.**

**Lodge #219, Clear Lake, IA** — We will be hosting the Iowa-Minnesota District Convention over Labor Day weekend. The motel selected by the committee is the Sheraton Inn in Mason City. The facility has meeting rooms, banquet rooms, and an indoor pool.

We had an aebleskiver and sausage supper in February. Thorvald and Bev Sorensen were celebrating their anniversary and also their birthdays. Other birthdays honored were Alvin and Frances Miller and Joyce Curtis. A discussion on the upcoming District and National Convention was held. The Convention Committee gave their report.

Four people filled out applications for membership and we welcome Valdemar (Wally) Johansen, Evalee O'Toole, Ray Curtis, and Marlene (Joyce) Curtis.

**Kathy Sonsalla, Sec.**

**Lodge #341, Kimballton-Elk Horn, IA** — We held our Fastelavn's party on February 23 at the Kimballton Town Hall.



Congratulations to Cat Queen, Ruby Christensen, and Cat King, Einer Leistad.



Everyone enjoyed watching the Kimballton Danish Folk Dancers.

President Folmer Bonnesen opened the meeting with the Pledge of Allegiance to the Flag. Charles D. Swanson, Ruth R. Swanson and Alice Marie Jensen were accepted as new members. Welcome!

A letter was read from Charlottee Jacobsen, an exchange student from Denmark, who attended our Christmas party, thanking us for our hospitality.

Page 18

It was announced that the Iowa-Minnesota District Convention will be held at Mason City this year.

It was voted to give a money donation and volunteers to work at the Hospitality Room for the National Brotherhood Convention to be held in Des Moines.

It was decided that members 90 years old or older be considered honorary members.

Nadjesta Overgaard read a "Vintergaek Bren," a Danish tradition of sending verse and first snow drop flower to a friend.

Most members participated in "Slaa Katten af Tønden." Einer Leistad and Ruby Christensen were crowned King and Queen as they got the cats. The Kimballton Folk Dancers entertained with several dances and then led the group for the Grand March.

**Verdie Christensen, Cor.**

**Lodge #347, Cedar Rapids, IA** — At our February meeting, Kathrine Severinsen and Emma Safely continued our Danish language lesson by having the group pronounce some basic Danish words from a printed chart.

Lisa and Krista Andersen gave a program about the Statue of Liberty with Lisa being dressed in a costume as the Statue, including a crown and red flashlight as the torch. Krista gave a first hand description of "The Lady" as she had been there last August.

Howard Christensen gave a report on attending a Doc Severinsen concert at Cornell College with Anker Severinsen and they were permitted to talk to Doc for about ten minutes. Since there are not very many Severinsens, Doc felt that he might even be related to Anker.

The "Care and Share" program suggested by the Home Office was discussed with action to be taken at a later date.

A get well card was signed by the members of the group for our President, Sharon Nielsen, who has been ill and was not in attendance.

**Norman Nielsen, Cor.**

### PRESIDENT'S AWARD BEST DISTRICT MIDWEST

**Lodge #4, Racine, WI** — At our February 11 meeting, we enjoyed a torsk dinner with 65 members and guests present. Boiled codfish, potatoes, mustard gravy, and the works were enjoyed.

After dinner, a short meeting was held and we welcomed new member Barry Peterson.

Our new officers for 1987 are as follows: Past President, Wayne Kavaliauskas;

President, John Schroeder; Vice President, Glen Nyboe; Conductor, Marty Andersen; Treasurer, John Mollerskov; and Secretary, Daniel Christensen.

You should start thinking about the Midwest Golf Tournament hosted by Kenosha Lodge No. 14 this summer.

**Doug Larsen, Cor.**

### PRESIDENT'S AWARD ANNUAL ACTIVITY SCHEDULE

**Lodge #14, Kenosha, WI** — Please note that those attending the anniversary party on April 11 are asked to bring along at least one item of non-perishable food in support of the National DBIA "Operation Care and Share" Program. Your overwhelming support of this program was greatly appreciated at Christmas time but we must remember those less fortunate at other times of the year also. The following letter was received, "Thank you for the donation of canned goods to the Head Start Program. Your contribution of over \$300.00 worth of food will help to fill our pantry and enable us to feed families in need. Your generosity is deeply appreciated. Sincerely, Head Start Program."

A crowd estimated at 300 attended our annual aebleskiver breakfast on January 18. Thirty members and wives served on the committee. With fear of missing someone's name we will just say that we sincerely thank you all for working and making it a very successful day for your lodge. Special thanks to Chairman David Jensen who was ably assisted by Gordy Andersen. A special mention and sincere thanks to Dave Jensen, Harve Cecil and Tom Banski who arrived at 5 a.m. to help Bob Ibsen clean and prepare the hall as we had a big party there the night before. Also, thanks to Dan Ervin, Wes, Jeff and Todd Bernhardt who cleaned up after the party.

### PRESIDENT'S AWARD BEST CIVIC ACTIVITY

**Lodge #34, Dwight, IL** — Our Valentine's Dance was held February 14. It was a fun evening with us coming out ahead. Thanks to the ladies who donated the cakes for the cake walk.

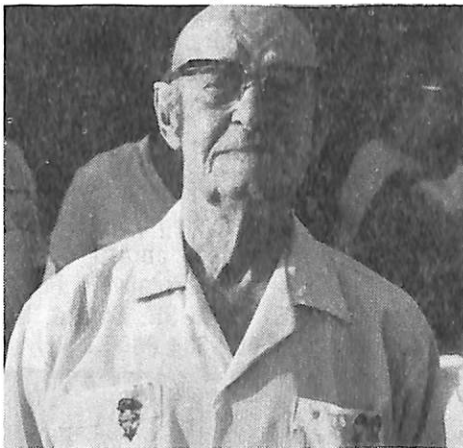
At our February 9th meeting, Sandy Lauritsen was voted on and approved for membership. We also voted to send an advertisement for the National Convention for the souvenir book.

I was in Omaha over Valentine's Day and Vern and I and our granddaughter, Megan, visited the National Headquarters on Friday. We enjoyed coffee and good conversation with Jerry Christensen, Pam Dorau, and Andy Andersen. We always feel at home there.

**Margaret Goodwin, Sec.**

**Lodge #35, Chicago, IL** — Our Fastelavn Party was well attended by about 85 members and friends. The costumes were terrific and everyone had a good time. There were two barrels containing the black cats — one for the children and one for the adults — and getting those cats out provided lots of entertainment. The judges had a difficult time determining who the winners were of the costume parade. There were Vikings, a mermaid, a "Gruesome Twosome" and lots of other themes. Afterwards, Fastelavns Boller and Danish sandwiches plus good things for the children finished up an evening of fun.

Florida beckoned some of our members and a get together took place on a sunny February Sunday afternoon at the home of Tove and Poul Parkes of Pinellas Park. Those attending were Doris and Herb Peterson of Homewood, Illinois, who were visiting Doris' folks; the Fred Hoffmans of Cortez, Florida; Yvette and Bob Jensen, who now make their home in Orlando, Florida; Mary and John Bondegard, who moved to Brooksville, Florida; Carl Meyer and daughter, Joan, who reside in New Port Richey; Arlene and Fred Hasler, who winter in Florida; Elsa and Woody Petersen of Park Forest, who were visiting the Parkes (Elsa's mother) and, of course, Tove and Poul. There were 16 gathered for the party and out of those 16, 12 were members of our lodge.



Carl Meyer of New Port Richey, Florida, proudly wears his 60-year pin plus other badges that show how active he has been for the Danish Brotherhood in America.

It was the perfect time for Woody Petersen to present Carl Meyer with his 60-year pin as a member of our lodge. Carl was happy to be surrounded by so many of his fellow lodge members and received his pin with pride.

Elsa Petersen, Cor.

**Lodge #36, Milwaukee, WI** — Following our February 18 business meeting, members enjoyed a movie and slides about various areas in Denmark shown and narrated by Greta Hansen of Johnson

Travel, Inc. Pertinent brochures pertaining to a May 16-28, 1987, tour of Denmark, were available as handouts. Greta will personally conduct the tour.

Thanks to Anne Mortensen and Elsa Berlin for the evening's refreshments.

Fish dinners, open to the public, will be served at the Norway House on April 25 from 5 to 7 p.m. Reservations are not necessary.

Al Larsen, Sec.

**Lodge #343, Waupaca, WI** — We met on February 26 and welcomed our new officers for 1987. President Harold Rasmussen greeted the members and guests present and then introduced Greg Heindel of the local "Tomorrow's Children" facility to which our lodge has, for several years, made donations to them instead of members exchanging Christmas gifts. A very informative account of the non-profit school and home was given regarding the autistic and other special types of children who are housed near Waupaca. Rewards for behavior and accomplishments were explained along with the needs for such items as bicycles and exercycles.

Evelyn Doerr, Past Pres.

## MICHIGAN-OHIO

**Lodge #227, Detroit, MI** — On February 21 the American Scandinavian Foundation held its annual ball at the Bottsford Inn with many lodge members present. The evening was very special and enjoyable. To help celebrate Michigan's Sesquicentennial, members of the different Scandinavian communities had their families traced back to early Michigan Statehood days. John Miller spoke of Karl Larsen's grandfather and father's settlement from Denmark.



Many, including Brotherhood and Sisterhood members, enjoyed the gala affair.

National Director Paul Carlsen, Otto Pedersen, Hans Nielsen, and Carl Mayland made a trip to Kenosha to represent our lodge at the bird shoot held on March 7.

On April 25 we will hold a Las Vegas Night. This event is open to the public, so Brothers bring your friends and help support the lodge for this first time event.

May 13 will be our regular dinner and meeting night. The Michigan-Ohio District

Convention will take place May 16. Bob Sorensen is our contact person. The District Golf Day in Ludington will be held on May 21. Don't forget, April 15 is the deadline for Skovsøen applications which should be sent to Paul Carlsen.

Ken Christensen, Cor.

## GCEL

**Lodge #116, Newark, NJ** — Our President for 1987, Brother Carl Wilhjelm, has many good ideas and would like to make this year as president a banner year, but he can't do it alone. He needs the support of the members. Think about it. With a little cooperation and a few new faces at our meetings, our lodge could once more climb to the top.

Brother George Godthaab, who underwent major surgery last September, is doing fine and sends his greetings to all Brothers.

It is with deep sorrow we announce that Brother Paul Gehrs passed away January 17 at the age of 88 and Brother Alfred Borup passed away January 28 at the age of 87. Our condolences are extended to their families.

Our April 10th meeting will begin at 7:30 p.m. sharp so that we may have a cover dish supper. The meat and rolls will be provided by the lodge. Everyone, please bring your spouse or sweetheart.

Donald Heckmann, Sec.

**Lodge #190, Schenectady, NY** — At the meeting of December 8, 1986, the following officers were elected for 1987: Norman O. Hansen, Past President; Lawrence L. Barry, Sr., President; James J. Andersen, Vice President; Willy Willendrup, Secretary; Olin W. Yauchler, Treasurer; Lawrence Andersen, Conductor; Carl J. Christensen, 1st Trustee; Peter T. Nielsen, 2nd Trustee; Carl H. Hansen, 3rd Trustee; Kaye H. Sorensen, Inner Guard; and Carl Petersen, Outer Guard.

The December 17 Christmas party was attended by 41 brothers, sisters and guests. Everyone enjoyed the fellowship and delicious hors d'oeuvres prepared by Chef Dick Seib during the open bar cocktail hour.

A delectable shrimp cocktail wet everyone's appetite before enjoying the delicious roast pork or stuffed chicken breast dinner. The dessert of kransekage was the result of a special request by Brother Harold Hansen.

After welcoming everyone, President Larry Barry asked for a moment of silence to remember our departed brothers and sisters. We were sorry that our oldest

lodge member (a member for 63 years), Victor Petersen, was unable to attend due to illness.

Co-chairmen Larry Barry and Jim Andersen distributed the door prizes.

Brother Glen and Sister Betty Lou Nissen's daughter, Eva Marie, thanked the brothers and sisters for their support in sponsoring her in the National Miss U.S.A. Model Pageant. Eva Marie was named U.S.A. Teen Model of New York State which allowed her to participate in the national pageant. **Lawrence Barry**, Pres.

**PRESIDENT'S AWARD  
BEST SINGLE SOCIAL ACTIVITY**

**Lodge #325, Nassau County, NY** — At our February meeting, a moment of silence was observed in memory of Brother Arne Vranum. Our sympathy goes out to his wife Hedvig Vranum and the family.

John Hjulmand reported from the home in Metuchen. At present, there are only a few residents.

George Jacobsen and Leif Pedersen informed members about the Danish Constitution Day to be celebrated June 8, 1987, at the Danish Home for the Aged, Croton-on-Hudson.

It was decided that our lodge would participate in Operation Care and Share.

After our business meeting, we had a white elephant sale, which netted our lodge a nice sum. **Niels B. Hansen**, Sec.

**Representative of  
the Year**



Jens N. Jensen, FIC from Lodge No. 167 in Portland, Oregon, received the Representative of the Year award for 1986 by being named Representative of the Month five times during the year. Jens credits much of his success to the support he receives from members and officers of his lodge and to the activities and programs in Lodge No. 167 which make membership attractive. New and revised insurance and annuity plans to be introduced in 1987 will no doubt increase competition for the 1987 award.

**Payment to Board Members**

MARCH 1987  
Robert E. Ibsen, salary, \$257.00  
Semi-annual expense allowance, Peter Weber, \$250;  
Cylde Langsted, \$250; Erling Braumann, \$250; Paul  
Carlsen, \$250; Kenneth Pedersen, \$250; Woodrow T.  
Petersen, \$250; George J. Jacobsen, \$250.

**Families Needed for  
Exchange Students**

American Scandinavian Student Exchange Programs (ASSE) is seeking local families to host Scandinavian, French, Spanish, German, Dutch, British, Swiss, Japanese and Australian girls and boys, 15 to 18 years of age, coming for the upcoming high school year. These personable and academically select foreign exchange students are bright, curious and anxious to learn about this country through living as part of a family, attending high school and sharing their own culture and language with their newly adopted American family.

The students are fluent in English and are sponsored by ASSE, a non-profit, public benefit organization, affiliated with the Swedish and Finnish Departments of Education and cooperating with the Canadian Provincial Ministries of Education.

The exchange students arrive from their home country shortly before school begins in late August and return at the end of the school year in June. Each ASSE student is fully insured, brings his or her own personal spending money and expects to bear his or her share of household responsibilities, as well as being included in normal family activities and lifestyles.

ASSE is also seeking local high school students to become ASSE exchange students abroad. Students should be between 15 and 18 years of age and interested in attending school and learning about the lands and people of Scandinavia, France, Spain, Germany, Holland, Britain, Switzerland, Canada, and Australia.

Persons interested in obtaining more information about becoming a host family or becoming a student abroad should contact ASSE's representative, Roger Bauman, 2275 S. 135th St., Omaha, NE 68144, telephone: 402-334-8805.

**APRIL ASSESSMENT  
NUMBER 1054**

is Due and Payable to the  
Lodge Treasurer

**April 1, 1987**

and Must Be Paid Before

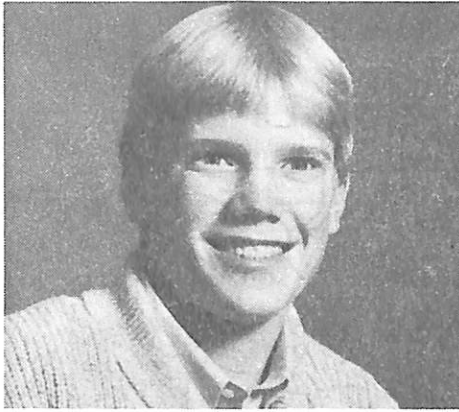
**May 1, 1987**

Members failing to pay their local  
lodge treasurer as per above will be  
considered in arrears.

**1987 District Convention  
Schedule**

District	Host Lodge	Date
Pacific-Northwest	Lodge No. 42, Spokane, WA	May 1-3
California-Nevada	Lodge No. 346, Riverside, CA	July 16-18
Iowa-Minnesota	Lodge No. 219, Clear Lake, IA	Labor Day Weekend
Midwest	Lodge No. 35, Chicago, IL	July 24-26
Nebraska	Lodge No. 161, Ruskin, NE	August 28-30
Michigan-Ohio	Lodge No. 225 & 301, Canton & Akron, OH	May 16
G.C.E.L.	Lodge No. 314, Hartford, CT	Labor Day Weekend

## Introducing . . .



**Monty Elvin Muller**, one of our newest Young Vikings. Monty joined Lodge No. 600 and has this to say:

My grandfather, Elvin Sloth, a member of Lodge No. 144 in Dike, Iowa, for 41 years, is sponsoring my membership as a Young Viking in the Danish Brotherhood in America. My great grandfather, Chris Sloth, was also a member for many years.

I am 15 years old and a sophomore at Ames High School in Ames, Iowa. I am taking all college prep courses as my future goal is to become an engineer. I am active in sports at Ames High — football, basketball, and baseball. In my spare time I enjoy golfing and swimming.

I am proud to be a member of the Young Vikings and am thankful to my grandfather for sponsoring me.

### **Welcome, Monty!**

Are you a new Young Viking member? If so, everyone would like to meet you, too! Just send a picture and a short article describing yourself and the hobbies or activities which you enjoy with why you joined the Danish Brotherhood and mail to DBIA, 3717 Harney Street, Omaha, NE 68131.

## **The Rebild Jubilee Year 1987**

Everything indicates success for the 1987 celebration at Rebild. Queen Margrethe and Prince Henrik have already accepted the invitation to attend, and Victor Borge and Erik Emborg will be principal speakers. As usual, there will be first class entertainment.

It appears that American interest in going to Rebild for July 4th is so big that the most numerous American attendance since the big celebrations immediately after World War II is expected.

The Festival Committee is working on a new kind of program leaving a little more time to relax than the usual rather tight schedule.

## **Miss Denmark-USA 1987 Search Begins**

It's time again to enter the Miss Denmark-USA contest.

This year, the Miss Denmark-USA National (all-round) contest celebrates its fifth year anniversary, the fourth year as a national organization with the purpose of finding a worthy and capable representative for the Danish-American people in the United States. The candidate must be willing to travel to Denmark to the Rebild National Park on the Fourth of July 1987, to represent the organization on the 75th anniversary of the Danish American Rebild Society.

If you are a young woman of Danish descent or nationality, currently living in the United States, are between the ages of 17 and 25, you should participate in this contest. It is not a beauty contest! What counts are intelligence, good will, ambitions, and a little knowledge of Danish and American history and culture.

If you become the winner in your regional area, you will be invited to New Jersey on June 5th, where the finals will take place. You will attend a VIP dinner following the finals and be a guest of honor at the Danish Constitution Day Celebration at the Danish Home on Croton-on-Hudson, New York, on Sunday, June 7, 1987.

The winner will receive a one week VIP

## **Scandinavian Summer Program Offered**

In response to a strong demand for a summer program, Scandinavian Seminar is pleased to announce the Nordic Summer Seminar (NSS), a study-abroad program ideal for anyone 18 or older who wishes to study in Scandinavia during the summer.

This month-long program (from June 14 through July 11) takes participants to Finland, Sweden, Norway and Denmark for a week-long stay in each country. Participants will stay in small residential folk colleges where Scandinavian faculty present lectures and hold discussions (in English) on politics, social policy, culture, history, literature, and art particular to each country.

At the completion of the program, participants will receive a transcript which may be used for academic credit.

The application deadline is April 15, 1987. The program fee is \$1,600 (airfare additional).

To receive a brochure on the Nordic Summer Seminar program or Scandinavian Seminar's College Year in Scandinavia program, please write Scandinavian Seminar, 24 Dickinson Street, Amherst, Massachusetts 01002.

trip to Denmark, including airfare and hotel, sightseeing and visits to the Parliament, the Rebild National Park, the Christian IV Guild, Danish American Club and Tivoli Gardens. In addition, cash prizes and gifts from Clairol will be awarded. Runners-up will receive cash prizes, gifts from Clairol and other sponsors. Scandinavian Airlines and the Danish Tourist Board are participating as main sponsors for the Miss Denmark-USA Contest 1987.

The regional selections will be held in April, 1987. The time and place will be communicated directly to the applicants.

For complete rules and the official entry blank, write to: The Miss Denmark-USA National Contest, Inc., P. O. Box 489, Plainsboro, NJ 08536. You may also obtain the official rules and application by writing Bertelsen Publishing Company, c/o Chris Steffensen, 1582 Glen Lake Road, Hoffman Estates, IL 60195. Hurry! The deadline of April 10, 1987, is approaching fast.

## **Dana Makes Special Offer to Danish Students**

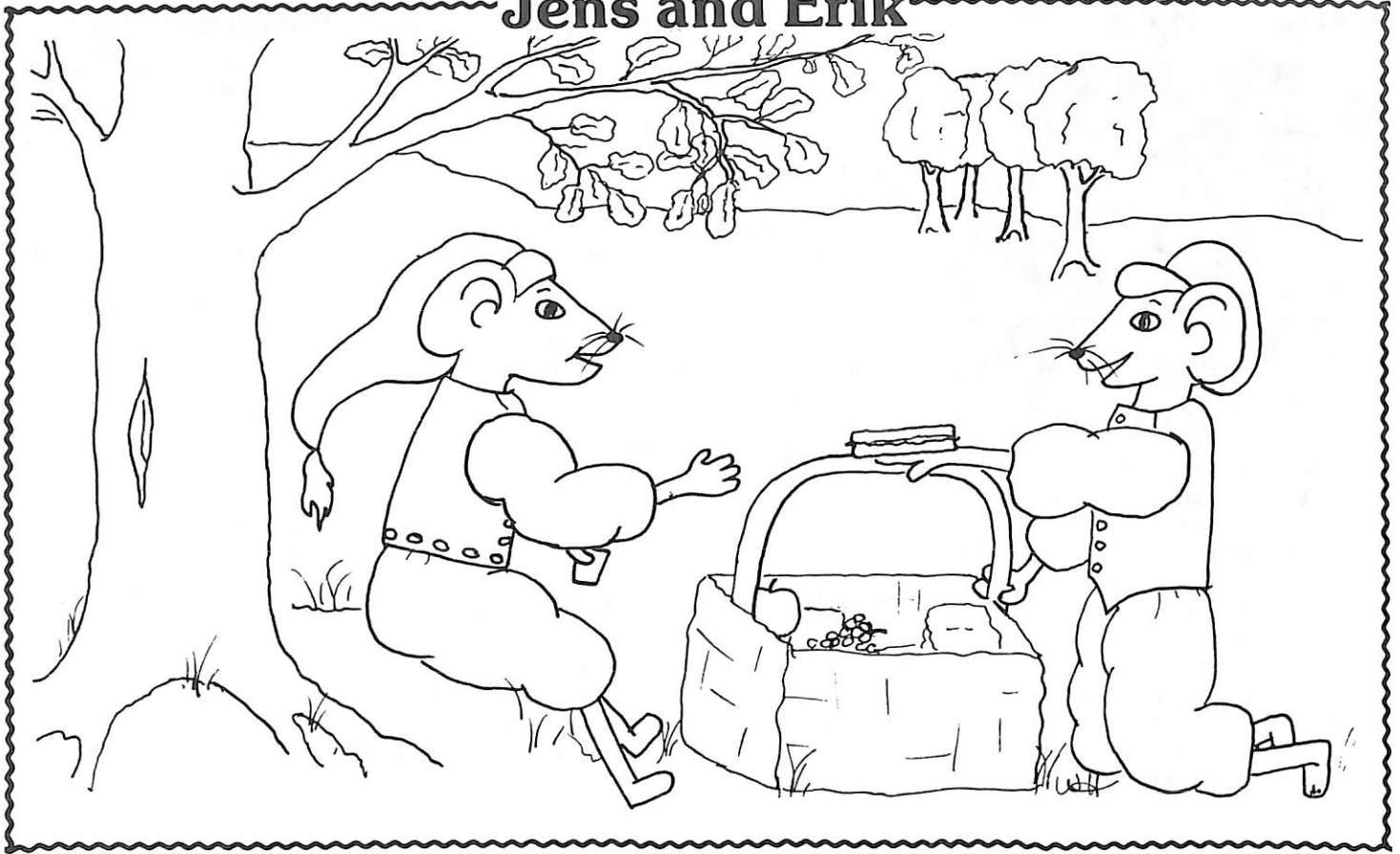
Students from Denmark are being invited to spend a year on an American college campus at very little cost to them through a program announced this week at Dana College in Blair, Nebraska.

Dana College, the oldest educational institution in America founded by Danish pioneers, is offering financial assistance in the form of reduced tuition and room charges to qualifying international students for the 1987-88 college year. Participating students will also be responsible for their own transportation to and from the United States, meals during the year at Dana, books and other incidental expenses.

Dr. Myrvin Christopherson, President of Dana College, explained the reason for this special offer in this way: "Dana has always been proud of her Danish heritage and as part of our continuing efforts to strengthen the bonds of friendship and understanding between America and Denmark, we are inviting students from Denmark to join us at Dana for the 1987-88 college year. And we are offering very attractive financial incentives in order to make it happen."

Applications are now being accepted for the 1987-88 academic year at Dana College which begins in late August and continues through May. Students interested in receiving more information are invited to contact the Director of Admissions, Dana College, Blair, Nebraska 68008, telephone 402-426-7222. The deadline for submitting applications is June 15, 1987.

# Jens and Erik



There's nothing better than a picnic at the famous Deer Park in Denmark for a calm and relaxing day after the many exciting travels Jens and Erik have taken. Although there are so many things to see in Denmark, it's time to go home. Jens and Erik were happy to have visited and are also happy that you came along and shared in their fun. They hope someday you can go to Denmark and see everything for yourselves!

Please color the final picture of Jens and Erik and mail it to the Danish Brotherhood in America, 3717 Harney Street, Omaha, NE 68131. Be sure to include your name, address and date of birth. You do not have to be a member of the DBIA to win. Four prizes are awarded every month, one for each of the following age groups: 2-4, 5-7, 8-9, and 10-12.

**March winners: Amanda Brown, Douglas Kittelson, Nicole Ojeda, and Jennifer Jensen.**

## Grandma's Kitchen Biksemad



(Meat and Vegetable Dish) *by Dagmar Jensen*

2 cups diced, left over meat	1 cup peas
1 small cauliflower	1 cup canned tomatoes
5-6 carrots	1 cup cold gravy
	1 large onion

Brown meat and onions in skillet. Cook vegetables and drain. Brown a little and mix with meat. Heat gravy with tomatoes and pour over mixture. Simmer being careful not to stir too much.

## 33rd National Convention Invitations

Lodges wishing to extend an invitation to national convention delegates meeting in Des Moines in September of 1987 are encouraged to send a written invitation to the National Headquarters, 3717 Harney Street, Omaha, NE 68131 by May 1, 1987. Submission of invitations at this time will insure inclusion in the soon to be printed book of convention proposals.

## A Lovely Land

*by Norman J. Hansen*

In my mind's video plays a lovely land  
Of brooks lively with trout and bottomed sand  
Of thatched farm roofs and gentle hills  
Of Tivoli Gardens with all its thrills.

In my mind's video plays a lovely land  
Of mermaids splashing in water by the strand  
Of ugly ducklings growing magically into swans  
And Thumbelina riding her leaf in golden dawns.

In my mind's video plays a land I have never seen  
A land where my body has never been  
And yet a land made real through Father's words  
A land of peaceful people and singing birds.

O Denmark, you are my lovely land  
Small like Zacchaeus but spiritually grand;  
Your loving and caring for one another  
Is shown by the way you treat your sister and brother.

# Viking Adventures

Coming Together — A Beginning      Keeping Together — Progress  
Working Together — Success

## Plan Ahead for your May Social Activity



Pjerrot and a ballerina welcome the opening of Tivoli. Photo courtesy of the Danish Tourist Board.



The Golden Fairytale Coach in Tivoli Gardens transport its young passengers throughout the park. Photo courtesy of the Danish Tourist Board.

May 1st is an exciting day in Denmark. It is the opening day of Tivoli and for those who are not fortunate enough to be able to be in Denmark for the festivities, you may want to bring a Tivoli theme to your lodge.

By choosing a Tivoli theme, you have many choices of activities for Tivoli is a garden, an amusement park, a cultural center, a concert hall; it contains restaurants for all tastes, a pantomime theatre, a boating lake, open air bands, and parades by the Tivoli Boys Guards. Of course, it would be almost impossible to offer such a variety of entertainment at one lodge meeting, so you may want to condense the program and offer a carnival with a Tivoli twist.

As members enter your hall, you may want them to pass through a traditional floral arch. With spring upon us, flowers should be readily available so have bouquets scattered around your hall also. For games, you could offer mini-carnival activities and reward small prizes. Activities could include throwing darts at balloons, knocking down milk jugs with a ball, throwing buttons in a can, hitting a golf ball in a hole, etc. You should have someone dressed as Pjerrot, the pantomime, to wander aimlessly around the hall. Pjerrot could also pretend (in mime) to be the leader of the Tivoli Boys Guard and lead the children in a parade.

Since Tivoli offers such a wide variety of foods, you may want to simplify this and offer a wide variety of Danish open-face sandwiches — *smørrebrød* — as part of your refreshments for the evening.

**Does your lodge have an activity suggestion you would like to share with other lodges? We would like to feature successful lodge activities in this column and ask for your assistance. Please forward an article and photographs regarding any new and exciting activity sponsored by your lodge to The American Dane, c/o Viking Adventures, 3717 Harney Street, Omaha, NE 68131.**

# Promote Your Society

with DBIA window decals. Actual vinyl decals feature a red center and are 4 inches in diameter. Made with a slit back outside mount for easy application on windows, car bumpers, notebooks, doors, etc. Order a supply today!

**\$1.10 each postpaid**

**Order 10 or more and pay only 90¢ each postpaid**

Yes, I would like to order \_\_\_\_\_ DBIA window decals and I have enclosed my check or money order in the amount of \$\_\_\_\_\_.

Name \_\_\_\_\_

Address \_\_\_\_\_

City \_\_\_\_\_ State \_\_\_\_\_ Zip \_\_\_\_\_

Mail to: Danish Brotherhood in America,  
3717 Harney Street, Omaha, NE 68131



**USPS 148-180**

**POSTMASTER: IF UNDELIVERABLE AS ADDRESSED, NOTIFY US PROMPTLY ON FORM 3579.**

*The Danish Brotherhood in America  
P.O. Box 31748  
Omaha, NE 68131*

Member: Send your address change, before moving for continued service.

**NOTICE!!! List all family members affected by this change.**

I belong to Lodge No. \_\_\_\_\_ My number in the lodge is \_\_\_\_\_

Name \_\_\_\_\_

New Street Address \_\_\_\_\_

City \_\_\_\_\_ State \_\_\_\_\_ Zip Code \_\_\_\_\_

## Proud To Be A Dane?

We're proud of our Danish heritage and would like more information about The Danish Brotherhood. We understand we can become members even though we may not be near a local lodge. We will receive *The American Dane* each month as members and be eligible to apply for other membership benefits. Please send information to:

_____	Other Family Members:
Name _____ Age _____	
_____	Name _____ Age _____
Street Address _____	
_____	Name _____ Age _____
City, State, Zip _____	
Mail To:	Name _____ Age _____
<b>The Danish Brotherhood in America</b>	
<b>P.O. Box 31748, 3717 Harney Street</b>	
<b>Omaha, NE 68131</b>	

MOLLERSKOV ALAN 4-3872  
1407 OAKDALE AVE  
RACINE WI 53406

**Dated Material  
Do Not Delay**