

Danish Brotherhood



VOLUME XLVIII

APRIL 1963

NUMBER 3

MAGAZINE

The "Gem City" Erie, Pennsylvania....



Your 1963 Convention Site

We again remind all delegates to plan their vacations for convention time, September 1963. However, we also want to remind all other Brother and Sisterhood members at large the convention committee is planning to make your visit one to be talked about for months after.

There will be many interesting things for you to see and visit during your leisure time. You will want to visit our natural harbor, bathing beaches and other Perry Sesquicentennial activities.

Erie is Pennsylvania's third largest city with a population of approximately 150,000 and is the Keystone State's only lake port. Erie's harbor, bounded and protected by famous Presque Isle, is the finest in the Great Lakes.

Presque Isle is a curving finger of land extending for seven miles into the clear waters of Lake Erie. It is carefully preserved in its natural state, of white, sandy beaches, numerous picnic areas and facilities, winding bridle paths, nature trails and hidden lagoons.

Presque Isle is accessible over a concrete highway which completely circles the peninsula, or by means of

big dependable ferry boats operating on schedule from the public dock at the foot of State Street in downtown Erie. Fishing and sight-seeing boats also operate from the public dock into the calm bay and into the exciting reaches of Lake Erie itself.

In Misery Bay, an inlet of Presque Isle, was built the wooden fleet of Commodore Oliver Hazard Perry which sailed forth to defeat the British in 1813 in the Battle of Lake Erie. A replica of the "S.S. Niagara," Perry flagship after the "Lawrence" was disabled, stands in the public dock area and is open to the public.

Erie was named for the friendly Eriez Indian tribe and is steeped in historical tradition. It is the site of Fort Presque Isle built by the French in 1753. Mad Anthony Wayne, the Revolutionary hero, died in a blockhouse of the rebuilt fort — and a restoration of that blockhouse stands near the lakefront.

Additional recreation and entertainment are provided by Erie's theaters, 15 municipally sponsored playgrounds, five golf courses, two of which are municipally operated and a public zoo and picnic grounds.



Danish Brotherhood Magazine

PUBLISHED MONTHLY BY

The Danish Brotherhood in America AS ITS OFFICIAL ORGAN

Second class postage paid at Askov, Minnesota.

POSTMASTER: If undeliverable as addressed, notify on Form 3579.

DANISH BROTHERHOOD MAGAZINE, ASKOV, MINNESOTA

Editor: Axel Skelbeck, 908 W.O.W. Building, Omaha 2, Nebr.

Managing Editor: Byron W. Petersen, Box 155, Askov, Minn.

Advertising Manager: Axel Skelbeck, 908 W.O.W. Building, Omaha 2, Nebraska.

Subscription Price: 50 cents per year.

Advertising Rates on Application.

OFFICERS OF THE SUPREME LODGE

SUPREME PRESIDENT:

Hans M. Andersen, 1403 Aspen Street, Selma, California.

SUPREME FIRST VICE PRESIDENT:

Viggo E. Mikkelsen, 22435 W. McNichols Rd., Detroit 19, Mich.

SUPREME SECOND VICE PRESIDENT:

Einar Danielsen, 404 North 5th Ave., St. Charles, Illinois.

SUPREME SECRETARY-TREASURER:

Axel Skelbeck, 908 W.O.W. Building, Omaha, 2, Nebraska.

CHAIRMAN SUPREME TRUSTEES:

Chris Madsen, 76 Union Place, North Arlington, New Jersey.

SUPREME TRUSTEE:

Fred Jensen, 5003 Burt Street, Omaha 32, Nebraska.

SUPREME TRUSTEE:

Kristen Jorgensen, 7927 Densmore Ave., N., Seattle 3, Wash.

April 1963

Official Notice

On page 3 of this issue of the Magazine we announce the new type of Benefit Certificate available to our membership and to new applicants for membership known as the "Life Paid Up at Age 65" Certificate.

This will also serve as notice to lodge officers, booster committees and the general membership that concurrently the present "Term to Age 16" Certificate, heretofore available to Juvenile members, is discontinued and will no longer be available.

The types of insurance benefit certificates now issued are:

To Juvenile Members: The Twenty Payment Life and the Life Paid Up at Age 65 plans.

To Adult Members: The Twenty Payment Life; Life Paid Up at Age 65; and the Straight (ordinary) Life plans.

Watch for the rates to be published in the next issue of the Magazine.

FOR THE SUPREME BOARD OF OFFICERS,
AXEL SKELBECK, Secretary-Treasurer.

Corrections

In the March issue of the Magazine in the Secretary's List Lodge No. 137, Newell, Iowa was inadvertently omitted.

147. Newell, Iowa. Elmer Jensen. Third Thursday.

The meeting dates for Lodge No. 314, Hartford, Conn., were incorrectly listed, they should be the first and third Wednesday of each month.

TOUGH JOB

A minister phoned his city's Board of Health to ask that a dead mule be removed from in front of his home. The young clerk who answered, trying to be clever, said, "I thought you preachers took care of the dead."

"We do," answered the preacher, "but first we get in touch with their relatives."

SCHOLARSHIPS

As part of the Danish Brotherhood's fraternal program the Supreme Lodge offers four new scholarships each year. These scholarships are available to insured members of the Brotherhood who are in good standing within their local lodge. Any member who is pursuing, or planning to pursue an undergraduate course of study at an accredited college or university in the United States is urged to apply.

Each scholarship is for \$250 per year and may be renewed each year for a total of four years. Scholarships are awarded to the four best qualified members by the Supreme Board on the basis of scholarship, participation in school and other activities, need and degree of self-sufficiency. The membership requirement is emphasized as it is a by-law requirement (Sec. 78, par. 9) and cannot be waived.

Requests for applications should be made directly to Mr. Kristen Jorgensen, Supreme Trustee, 7927 Densmore Ave. No., Seattle 3, Washington, not later than May 25, 1963. If you are eligible you are urged to apply.

Fraternally,

KRISTEN JORGENSEN, Chairman,
The Scholarship Committee.

Resolutions

ALFRED R. JOHNSON, Jamestown, N. Y.

In memory of our dear brother, Alfred R. Johnson, who passed away January 12, 1963, the following resolution was adopted by Lodge No. 171, Jamestown, N. Y.:

Be it resolved, that we deeply regret the loss of our brother and we hereby extend to his family our most sincere sympathy.

Be it further resolved, that our charter be draped for a period of thirty days and this resolution be entered in our minutes and in our Danish Brotherhood Magazine.

William Myregaard, President.
John L. Nelson, Secretary.

GEORGE W. ENDERSEN, Jamestown, N. Y.

In memory of our dear brother, George W. Endersen who passed away March 2, 1963, the following resolution was adopted by Lodge No. 171, Jamestown, N. Y.:

Be it resolved, that we deeply regret the loss of our brother and we hereby extend to his family our most sincere sympathy.

Be it further resolved, that our charter be draped for a period of thirty days and this resolution be entered in our minutes and in our Danish Brotherhood Magazine.

William Myregaard, President.
John L. Nelson, Secretary.

COPENHAGEN TIVOLI MUSIC!

Eight beautiful pieces by H. C. Lumbye

"The Danish Waltz King"

This superb record will soon appear on a nationwide market. Regular price \$5.50. Get yours now for only \$4.25.

12-inch, 33 rpm LP Record — \$4.25 postpaid
Order by mail. Send check or money order.

Write for list with large selection of Danish Records and Books!

HANS V. LASSEN

P. O. Box 363

Round Lake, Illinois

Supreme Officers Announce New Type Insurance Certificate

Your Society is pleased to announce that we are now offering a new type of insurance certificate to our members. This is the new "Life Paid Up at Age 65." This new certificate becomes available in addition to our present Ordinary Life and Twenty Pay Life Certificate.

Under the terms of this certificate the Insured Member would pay his or her regular monthly assessments until he or she reached age 65. At that time, the insurance becomes paid up for life. That is to say, the insurance continues in force even though future monthly assessments are not required.

This certificate will be issued from ages 0 through 44. Because the life expectancy is somewhat longer for women than for men, beginning with age 10 the rates for women are somewhat lower than that for men. Juvenile members graduate automatically to the adult class when they reach age 16.

The chief purpose of a Life Paid Up at Age 65 certificate is to provide the Insured Member with low cost insurance protection which will require no future assessments when he reaches a normal retirement age. Especially at the young ages is it true that the rates are only slightly higher than an Ordinary Life plan. The Life Paid Up at Age 65 is, therefore, within the power of almost any member to buy who can afford an Ordinary Life.

Having an insurance certificate fully paid for when the member reaches age 65 is a definite advantage in most cases. Age 65 has come to be regarded as a normal retirement age. But most people when they retire, receive a lower income than they were receiving when they were gainfully employed. They may still need the insurance as much as before, and having it paid up at the time when income falls off is a definite advantage. Furthermore, this form of insurance builds substantial cash values at age 65, which are available to the member either as a cash surrender, or as a loan if the need should arise. Also the certificate contains up-to-date provisions for cash, loan paid-up insurance or extended term insurance prior to attaining age 65.

The Life Paid Up at Age 65 contains provisions whereby, under certain conditions, the Insured Member, if he wishes, may provide that in case of death, the payments to the Beneficiary may be paid as a monthly income, either for a certain number of months or for the lifetime of the Beneficiary. This enables the Insured Member to be able to provide an income to a Beneficiary who has no experience in investing funds and who might otherwise lose much of the insurance money through unwise investments.

The Life Paid Up at Age 65 will be issued in a minimum amount of \$1,000 and, normally, in a maximum amount of \$25,000. However, applications for more than \$25,000 will be given consideration.

The most recent issue of our publicity brochure fully describes the three types of insurance certificate now available, and quotes the rates in effect. Ask your lodge secretary for a free copy or write to the Home Office for one.

FOR THE SUPREME BOARD OF OFFICERS,
AXEL SKELBECK, Secretary.

Danish Brotherhood NATIONAL BOWLING TOURNAMENT

The 1963 Bowling Prize List is expected to be as follows:

TEAM — 1st prize, \$75 and a trophy; 2nd prize, \$60; 3rd prize, \$50; 4th prize, \$45; 5th prize, \$40; 6th prize, \$37.50; 7th prize, \$35; 8th prize, \$32.50; 9th prize, \$30; 10th prize, \$27.50; 11th prize, \$25; 12th prize, \$22.50; 13th prize, \$20; 14th prize, \$17.50; 15th prize, \$15; 16th prize, \$14; 17th prize, \$13; 18th prize, \$12; and 19th prize, \$10.

Individual prizes are as follows:

INDIVIDUAL HIGH SERIES — 1st prize, \$10; 2nd prize, \$8; 3rd prize, \$6; 4th prize, \$5; and 5th prize, \$4. INDIVIDUAL HIGH GAME — 1st prize, \$10; 2nd prize, \$8, 3rd prize, \$6; 4th prize, \$5; and 5th prize, \$4.

All Scores With Handicap!

EINAR DANIELSEN, St. Charles, Ill.
Bowling Tournament Chairman.

PACIFIC NORTHWEST DB NEWS

By NORBERT E. GROVE, Box 350, Puyallup, Washington

We hope you have appointed an attendance chairman to stimulate interest in the "over the border tour" to our 14th annual district convention to be held in British Columbia next month on the third, fourth and fifth. The Pacific Northwest Danish lodges convene in Canada this year. The excellent facilities of the fine hotels and motels, as well as the many attractions to be found in Vancouver and New Westminster, will undoubtedly add to your enjoyment.

Traditionally, these yearly meets increase with widespread acceptance and as a past district president of the organization, I trust that we have an increasingly effective overall influence for the good of our order. Your lodge looks to you for leadership and in turn the district is dependent upon you to help guide the destinies of our great fraternity.

Just opened within the year, convention headquarters will be in the Royal Towers Hotel, a new establishment offering the ultimate in service. There is still time to register so make up your mind and get in touch with Convention Secretary Hugo Busch at 14933 Glen Avon Drive, North Surrey, B. C.

* * * * *

Our organization seems to be in a paradoxical situation. As it grows in strength, attendance at monthly meetings remains too low. Why? Is it because the members got out of the habit of attendance during a period of weakness some years ago? Is it because television has become so time consuming that one cannot afford the time of one monthly meeting any longer? Maybe the need for new blood has something to do with it? Perhaps it is a combination of these factors?

We are an old organization and yet we are growing with a renewed vitality. Our members are constantly becoming younger as a new surge of brothers gather around our altars. We are a respected organization. We are a friendly organization. We owe all this to a handful of men who have dedicated themselves to further our order. I do not believe that absence indicates lack of interest. Whatever the reasons, attendance is embarrassingly poor. To ask your officers to devote their evening, arrange a program and provide lunch only to face a poor turnout, is a cheeky imposition. Do your part. Please attend your scheduled meeting.

* * * * *

Seattle's law committee is made up of Brothers Sam Fredriksen, Paul Hansen, Martin Rasmussen, Otto Nielsen and Pete Alsted. Two new juvenile members have joined the ranks of DB 29, Scott Gregory Jorgensen and Peder Troy Sorensen. On February 13, Brothers Reiner Nielsen, Ib Jessen, Elvin Martin Akre, Matt A. Matson, Gert Hans Jacobsen, Holger Ejvind Johansen and Jens Chris Bruun were initiated. Brothers Theodore Jensen, Louis Tagholm, Axel Johansen, Wilhelm Shultz, Bert Jessen, Viggo Petersen, Jess Jessen, Hans Nielsen and Herman Jensen are on the sick list. Brother Hans B. Andersen was laid to rest February 2.

Brother Einer Thompson has four of his World's Fair famous model ships on display in the Windjammer Restaurant at Shilshole Bay. District delegates include Brothers Einar Hansen, Paul Hansen and Chris Hansen with Alternates Robert Wight, John Ottosen and Hugo Dall. Brother Kristen Jorgensen made an official visit to Enumclaw last month.

* * * * *

Tacoma's Danish Brotherhood has elected three new officers, President Henning Lindberg, Vice President Mar-

tin Rasmussen and Trustee Regner Brochner. The delegate and alternate to the national convention are Norbert Grove and C. Fred Christensen, respectively.

Vice President Emil Niels Paulsen, born in Denmark December 12, 1886, passed away January 30. March 9 marked the 74th anniversary of DB 33.

Enumclaw's delegate and alternate to Erie, Pa., this fall are Carl N. Grove and Jens P. Holm, respectively. Past President Karl Koch's daughter, Ingrid, is home in Buckley for spring vacation from Walla Walla's Whitman college. Speakers at the Grove's golden wedding anniversary included Kristen Jorgensen, Supreme Trustee of the Danish Brotherhood; Otto Nielsen, Past President of the Northwest Danish Home; and Eugene DeWitt, President of DB 113.

* * * * *

Spokane's Brother Lars C. Nelsen, a past president and a 50-year member, passed away last month. Brothers Martin Nielsen, Iver Hansen and Laurids Mortensen have been elected delegates to Vancouver. Past President Ernie Wales is basking in the sunshine of Hawaii these days.

Vancouver, B. C.'s Goodwill Ambassador Svend A. Johansen attended the 25th wedding anniversary celebration of Past District President Magnus Esrom in Portland and made a few stops en route in behalf of the May convention.

SCANDINAVIAN- AMERICAN LINE

Regular freight and passenger service to Denmark with modern fast motor vessels sailing from United States East Coast ports about every fourteen days.

For rates and particulars apply to your nearest travel agents or direct to

FUNCH, EDYE & Co., Inc.
General Agents

NEW YORK:

25 BROADWAY

Telephone: WHItall 3-2100

CHICAGO:

231 SOUTH LA SALLE STREET

Telephone: CEntral 6-9288

NEW ORLEANS:

AMERICAN BANK BUILDING

Telephone: 524-3266

ANNUAL REPORT

In accordance with statutory provisions we are here-with printing the annual statement for the year ending December 31, 1962.

INCOME

Balance from previous year	\$4,593,453.91
First year assessments	16,205.03
Other assessments on Adult Insurance	115,836.20
Other assessments on Juvenile Insurance	5,379.77
Assessments to Fraternal Fund	4,189.00
Assessments to Promotional Fund	4,717.50
Dues and Per Capita Tax	13,862.50
Change of certificate fees	133.00
Interest and dividends on investments	148,691.09
Sale of lodge supplies	735.12
Sale of advertising space	2,500.75
Membership fees	500.00
Profit on sale of bonds and other assets	1,996.58
	<hr/>
	\$4,908,200.45

DISBURSEMENTS

Death claims	\$197,377.22
Surrender values	8,192.17
Dividends on benefit certificates ..	19,502.80
Total paid members and beneficiaries	<hr/>
	\$ 225,072.19
Rent	4,747.53
Salaries and wages	38,338.80
Legal fees	15.00
Medical examinations	344.50
Inspection reports	35.70
Traveling expense	5,532.83
Postage, express, telephone, telegraph	2,397.78
Printing and stationery	2,781.86
Cost of furniture and equipment	2,642.72
Lodge supplies purchased	416.36
Books and periodicals	47.00
Collection and bank service charges	12.10
Sundry general expense	2,384.87
Actuarial fees	3,255.00
Miscellaneous expense	834.16
Field expense allowance	20.00
Official publication	5,214.84
Prizes, awards, donations	7,684.05
Scholarship grants	2,250.00
Relief payments to members, less \$25.01 returned	11,046.87
Investment expense	424.45
Taxes, licenses, fees	1,425.64
Loss on sale of bonds	183.40
Balance on hand December 31, 1962	4,591,092.80
	<hr/>
	\$4,908,200.45

ASSETS

Book value of bonds	\$3,981,757.35
Book value of stocks	371,697.21
Certificate loans	11,315.74
Bank deposits	226,322.50
	<hr/>
TOTAL LEDGER ASSETS	\$4,591,092.80
Other Assets:	
Premiums in hands of local lodges	\$ 23,408.20
Interest accrued on bonds and certificate loans	40,252.62
	<hr/>
TOTAL	\$4,654,753.62
Less: Book value of stocks over market	8,475.44
	<hr/>
TOTAL ADMITTED ASSETS	\$4,646,278.18

LIABILITIES

Reserve on outstanding certificates, based on 1941 C. S. O. Mortality and 2½% interest ..	\$2,831,396.00
Death claims reported prior to December 31, 1962 and in process of settlement	5,798.59
Death claims incurred in 1962, reported in 1963	21,321.63
Provision for dividends to members (estimated amounts)	36,000.00
General expenses accrued	200.00
Mandatory securities valuation reserve	98,943.23
Fraternal, Promotional and Expense Funds..	425,558.90
Contingency reserves	701,649.22
Balance unassigned funds	525,410.61
	<hr/>
	\$4,646,278.18

VALUATION EXHIBIT

In conformity with statutory requirements, we are publishing herewith a valuation made by our consulting actuary, Mr. C. D. Spangler, of the Certificates in good standing on December 31, 1962. This valuation is not to be regarded as a test of the financial solvency of the Danish Brotherhood but is made to determine the amount the society should have on hand in order to pay its future death losses as they mature, without change in the number or amount of assessments. The valuation was made on the C. S. O. Tables of Mortality with 2½% interest assumption respectively.

ASSETS — Actual and Contingent

1. Net admitted assets	\$4,646,278.18
------------------------------	----------------

LIABILITIES — Actual and Contingent

2. Present value of benefits promised	\$2,831,396.00
3. Additional reserves to protect benefit cer- tificates	1,127,208.12
(Includes \$425,558.90 balance of Fraternal, Promotional and Expense Funds and \$701,- 649.22 of Contingency Reserves.)	
4. Mandatory securities, valuation reserve	98,943.23
5. Death claims incurred, settlement not com- pleted	27,120.22
6. Provision for dividends to members (estimated)	36,000.00
7. Other liabilities	200.00
	<hr/>
8. TOTAL	\$4,120,867.57
Ratio of Line 1 to Line 8 is 112.75%.	

APRIL ASSESSMENT

766

IS DUE AND PAYABLE TO THE
LODGE TREASURER

April 1, 1963

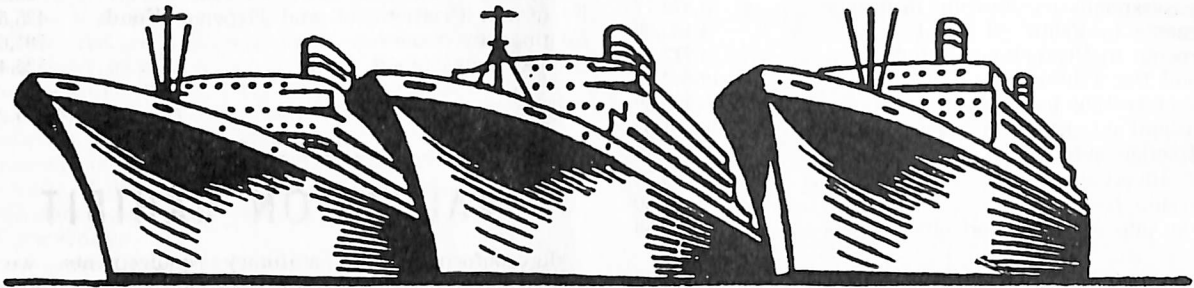
AND MUST BE PAID BEFORE

May 1, 1963

Members failing to pay to their local lodge treasurer
as per above will be considered in arrears.

Supreme Secretary-Treasurer,
AXEL SKELBECK,

Save Money -- Travel in the "Thrift Season"



You have the choice of three great ships when you travel Norwegian America Line to Denmark — offering you well appointed staterooms, beautifully decorated lounges and spacious decks for rest and play. You will enjoy the hospitality, friendly service and excellent cuisine for which Norwegian America Line ships are so well known.

SAILINGS FROM NEW YORK TO COPENHAGEN

s. s. STAVANGERFJORD

April 19

MINIMUM RATES

First Class: One Way \$296 — ½ Round Trip \$266
Cabin Class: One Way \$226 — ½ Round Trip \$203
Tourist Class: One Way \$190 — ½ Round Trip \$171

m. s. OSLOFJORD

April 12

MINIMUM RATES

First Class: One Way \$331 — ½ Round Trip \$298
Tourist Class: One Way \$219 — ½ Round Trip \$197

m. s. BERGENSFJORD

April 30

MINIMUM RATES

First Class: One Way \$341 — ½ Round Trip \$307
Tourist Class: One Way \$225 — ½ Round Trip \$203

Group Rate Reduction

25% reduction now offered in Cabin and Tourist Classes to groups of 25 or more adult passengers traveling round-trip during Thrift Season.

SEE YOUR TRAVEL AGENT OR

Norwegian America Line

AGENCY, INC.

24 STATE STREET
CHICAGO — MINNEAPOLIS — SEATTLE — SAN FRANCISCO — LOS ANGELES — MONTREAL

NEW YORK 4, N. Y.

PROMOTION PAGES

1963 Membership Drive Goes Into High Gear

Just as today's cars slip into high gear smoothly and powerfully, so our 1963 Membership Drive is displaying hidden "muscle," smoothly and powerfully. As of our regular closing date, the twentieth of the month, seventy-six of our members had sponsored new members into forty-seven of our Lodges so far this year. We recorded a total of one hundred fifteen new members admitted to date this year of which ninety-eight are adult, male and female, and seventeen are juvenile, male and female. This is an increase of exactly 25.64% over last year to date!

Our THANKS to you members who are inviting your wives, brothers, sisters, sons, daughters, sons-in-law, daughters-in-law, other relatives and friends to join this Danish Brotherhood of ours. And a really hearty WELCOME to you new members — we are happy and proud to have you join us!

New Adult Members Admitted Last Month

Lodge	Location	Sponsor	New Member
16	Minden	Tony Madsen	Kenneth E. Allen
16	Minden	Tony Madsen	V. Lorene Allen
16	Minden	A. E. Madsen	Ernest L. Johnson
16	Minden	A. E. Madsen	Nancy L. Johnson
29	Seattle	H. M. Rasmussen	Elvin M. Akre
29	Seattle	Paul C. Hansen	Jens Chr. Bruun
29	Seattle	F. Sorensen	Gert H. Jacobsen
29	Seattle	Hugo Dall	Ib. Nicolai Jessen
29	Seattle	F. Sorensen	Holger E. Johansen
29	Seattle	Paul C. Hansen	Matt A. Matson
29	Seattle	Paul C. Hansen	Reimer F. Nielsen
36	Milwaukee	A. Jorgensen	S. H. Jorgensen
36	Milwaukee	C. Westerlund	Anatola Ryslinge
39	Oakland	Robert Jensen	Oscar A. Hallgren
42	Spokane	I. Eskeberg	Edith A. Gage
49	San Francisco	Dick Clausen	Willy Jonsson
51	Ludington	Carl Jeppesen	Martin L. Johnson
51	Ludington	Carl Jeppesen	Richard Peterson
70	Greenville	Paul Worden	Kenneth B. Thomas
71	Penn Yan	Henry Laursen	Peter Christensen
75	Albert Lea	F. Lunstrum	Walter B. Larson
84	Lincoln	S. C. Sorensen	Ralph Hagen
84	Lincoln	S. C. Sorensen	Harvey L. Sieck
102	Providence	C. W. Sorensen	Peter Rasmussen
113	Enumclaw	Carl N. Grove	Chris Petersen
125	Weeping Water	R. Lauritzen, Jr.	David Nielsen
125	Weeping Water	R. Lauritzen, Jr.	Dwain Nielsen
126	Los Angeles	Olaf Ericson	Alvin F. Cuddy
126	Los Angeles	B. Christensen	Niels T. Sorensen
139	Viborg	J. A. Nielsen	Melissa C. Jensen
139	Viborg	J. A. Nielsen	Noble Jensen
139	Viborg	N. C. Jespersen	Edna Jespersen
139	Viborg	G. Nielsen	Josephine M. Nielsen
139	Viborg	G. Nielsen	Norman W. Nielsen
139	Viborg	A. J. Tronbak	Virgie A. Nielsen
139	Viborg	A. J. Tronbak	Wilfert P. Nielsen
139	Viborg	A. J. Tronbak	Elly J. Tronbak
139	Viborg	A. J. Tronbak	Mildred J. Tronbak

143	Petaluma	John V. Jensen	James H. Jensen
144	Dike	Erhart Andersen	Joseph E. Bohr
167	Portland	Marcus Pihl	Karlo S. Andersen
181	Sidney	Morris Hansen	Richard Hansen
225	Canton	J. Christensen	Fred. Southwood
273	Dillon	A. Christensen	Einar Soyland
299	Solvang	Levi Persson	Peder Bach
306	San Diego	R. N. Jensen	Howard G. Olsen
323	Alhambra	Henry Adler	Gwendolyn M. Adler
323	Alhambra	H. Johansen	Edith H. Johansen
323	Alhambra	Kenneth Larsen	Eric R. Johnson
323	Alhambra	F. E. Jepsen	Elinor D. Pittman
323	Alhambra	F. E. Jepsen	Ottis E. Pittman, Sr.
323	Alhambra	Olaf Christensen	Ebba Tonnesen

New Juvenile Members Admitted Last Month

Lodge	Location	Sponsor	New Member
16	Minden	A. E. Madsen	Janet L. Johnson
16	Minden	A. E. Madsen	Lori Lee Johnson
16	Minden	A. E. Madsen	Victoria S. Johnson
29	Seattle	K. Jorgensen	Scott G. Jorgensen
29	Seattle	P. C. Hansen	Peder T. Sorensen
67	Fresno	Julius Hansen	Timothy N. Covey
77	Turin	H. Ravnsborg	Carolyn Whiteman
242	Erie	W. Christensen	M. A. Christensen
263	Askov	Earl A. Johnsen	Connie Johnsen
283	Dagmar	Alvin Johnson	Kathy Jo Johnson
323	Alhambra	F. E. Jepsen	Edward L. Pittman
323	Alhambra	F. E. Jepsen	O. E. Pittman, Jr.
323	Alhambra	F. E. Jepsen	Steven Ray Pittman

It is interesting to note that our Lodges large and small, in big cities and small towns, from one end of the country to the other are admitting new members — proof positive that ANY LODGE THAT WANTS TO, can admit new members.

Study this breakdown of new member admittances to date this year — discuss it at your next Lodge meeting — compare the record of your own Lodge with it — then if your Lodge isn't admitting new members on a comparable basis, help start your own Membership Drive. You'll enjoy the thrill of seeing your Lodge grow and you'll have a bigger and more interesting Lodge for it!

General Committee or District	Number of Lodges	Lodges Admitting This Year	New Members Admitted This Year
Pacific/Northwest	10	5	15
California	17	10	25
Idaho/Utah	4	0	0
Colorado/Wyoming	6	1	1
Nebraska	9	3	16
Iowa	22	4	7
Minnesota	12	2	4
Midwest	25	3	8
Michigan/Ohio	15	5	10
GCEL	30	9	11
No Affiliation	19	4	18

There's some real food for thought in those statistics. You are a part of your Lodge. Your Lodge is a part of the area organization which binds you all together and

works for your benefit. Your area organization is a part of the Danish Brotherhood in America. We all work together for the benefit of all our Lodges and all our members. If your area organization or your Lodge isn't now doing a fair share toward making our 1963 Membership Drive a real success, we suggest you do something about it! And, the best thing you can do about it is to talk Danish Brotherhood to all eligible persons that you know and bring in one or more applications to your very next Lodge meeting. You'll be glad you did!

Honor Roll for 1963

Lodges Who Have Admitted Ten or More
New Members Since January 1, 1963

Lodge No.	Location	Population	Mem-ber-ship 12-31-62	New Mem-bers	Per Cent of In-crease
139	Viborg, S. D.	669	63	12	19.04
29	Seattle, Wash.	557,087	301	10	3.32

Our sincere congratulations to Viborg's No. 139 and Seattle's No. 29 on achieving HONOR ROLL listing for the first time and so early in the game. By qualifying for HONOR ROLL listing, you refute the age old claim, "You can't get people to join the Danish Brotherhood in a small town (or in a big city.)" You have both now proved that all our Lodges can grow in membership, no matter where they are located, if they want to!

It is only fair to warn you members of No. 139 and No. 29 that you are going to have to work to hold on to your No. 1 and No. 2 spots on HONOR ROLL. There are other Lodges eyeing your spots and are breathing down your necks!

Frank Jepsen and his Danish vacqueros from sunny California's Alhambra No. 323 are already credited with admitting seven insured members and two social members for a credit total of eight. They won't stop there, you may be sure of that! The Madsen brothers of Minden's No. 16 seem to have started a Membership Drive all their own and promise that No. 16 will appear in HONOR ROLL next month. And you know what? We believe them!

Lincoln No. 84's Chris Block and Soren Sorensen have teamed up and are shooting at HONOR ROLL with five new members already admitted and more to come — soon. And there will be more from all over the land so get those new member applications in, approved and initiated so YOUR Lodge is included on HONOR ROLL — all it takes is ten new members admitted this year, counting social members as one-half member.

Kansas City, Mo., No. 56 Booster Rally a Smash Hit

Aided and abetted by an Omaha team consisting of Axel Skelbeck, Fred Jensen, Carsten Hoffman and Paul E. Strand, Kansas City, Mo., Lodge No. 56 staged their very first Booster Rally on Saturday, March 16. As the result of the work and planning done by their own members, this Booster Rally netted them twenty-five (25) new member applications that very same evening, all signed and initiation fees paid for! A giant 46.3% increase in membership all in one evening! Here's the interesting story behind this tremendous performance.

No. 56's hard working Secretary Otto M. Larsen wrote the Home Office for some help and advice on December 6, 1962. Their membership was down; their meeting attendance was almost nil — a quorum was the exception, not the rule; their social events had all but disappeared;

in short, No. 56 was coming apart at the seams. Their membership had dwindled to 54 with no new members admitted since 1957 when they admitted one lone new member. Forty per cent of their members were over the age of 70. Only 10% were under the age of 40. And still, a few of their dedicated members were unwilling to let their Lodge die — they were willing, with a little help, to work to make it an interesting, an active and a growing Lodge.

We started corresponding with Otto and arranged for your Promotional Director to meet with their officers at his home Saturday afternoon, January 19 and with their Lodge that evening. We spent the entire afternoon discussing their problems and possible solutions. It became obvious that the will to rebuild No. 56 was there — all that was needed was a plan for rebuilding — then sell that plan to the members. This we did at the evening meeting January 19. A Booster Rally was suggested for the evening of March 16, their regular meeting night. The entire Lodge membership was organized into two teams. President David (Skip) Schmidt and Vice President Harry Prinds volunteered to work as captains of the two teams. A plan for enlisting the active support of all their members was worked out and adopted. Their by-laws were properly amended to admit the ladies to membership. Prospect Lists were started by each team — most of the members present submitted names, a surprising number of sons, daughters, wives, sons-in-law and daughters-in-law. No. 56 was on its way — with real enthusiasm.

During the interval between this January 19 meeting and the March 16 Booster Rally, letters flew back and forth between Omaha and Kansas City — advice and help sought — advice and help given. The reports were encouraging but still that shadow of doubt remained, can a Lodge that has lain dormant for so long and gone so far downhill really do it?

The answer was clear Saturday evening, March 16, when we found the members preparing a chicken dinner for 60 people — and just about every prospect who had been invited actually came. Old friendships were renewed. New friendships were forged. Everybody met everybody else and a "party" atmosphere soon became evident. Everybody enjoyed the sumptuous chicken dinner — most of us consumed much more than we should have but it was most delicious. Then the tables were cleared, President Skip Schmidt bade everybody welcome, Supreme Secretary-Treasurer Axel Skelbeck, Supreme Trustee Fred Jensen and Carsten Hoffman (Omaha Lodge No. 195) spoke briefly and then we explained the advantages and responsibilities of membership in the Danish Brotherhood to all present. Before we could even pass out application blanks to the prospects in attendance, Axel Skelbeck proudly introduced little Kirsten Schmidt as the first Juvenile member of Lodge No. 56, and presented her with his own, personal, lapel emblem pin. Ejlf Schmidt, her father, had completed an application for her while our backs were turned! And she was and is a mighty proud little girl.

Applications were now passed around to all present and those who sought help in properly completing them were given help — gladly. Such excitement you never saw. Who's going to be the first male to complete an application? Who's going to be the first female to complete an application? Who's going to sponsor the first Juvenile? Who's going to sponsor the first male? Who's going to sponsor the first female? We did finally get settled down to an orderly sort of confusion so that when the officers and members of the Lodge retired to the regular meeting room around 11 o'clock, they were able to consider and to ballot on 25 signed applications, all

with initiation fees paid! This is as many applications as No. 56 has received, in total, in all the years since 1941.

The officers of No. 56 now plan to initiate this wonderful class of candidates at their next regular meeting Saturday, April 20. They invited we Nebraskans to come back for that meeting and to assist with the initiation ceremony and we are planning on doing just that. Already Secretary-Treasurer of the Nebraska General Committee Boy Jessen and his wife of Lexington, Nebr., have signified their intention of accompanying us. We expect President Ras Lauritzen and Vice President Leo Jensen to join us but they have not yet had time to answer our invitation. However many of us are able to make it, you can be sure there will be an exciting and interesting meeting in Kansas City April 20, and that Lodge No. 56 will continue to grow in interest, activity and membership. Already last Saturday night, candidate "Chuck" Baker started talking about showing movies from Denmark at an early meeting and about organizing another Booster Rally for early next fall. And Chuck will do it, with the help of his Caroline and some of the other new candidates.

Congratulations to all you members of Lodge No. 56. We are tremendously proud of your achievement. We'd like to say a special "Thanks" to all of you who worked to make your first Booster Rally such an outstanding success but there simply isn't space available, so we'll just say "Thanks to all of you." You took a giant step forward — now let's see you pick up the rest of those applications that prospects took with them home — get your new members bringing in applications from their relatives and friends — and you'll have the interesting, active and progressive Lodge you want and are entitled to.

We'll see all you Kansas Citians Saturday, April 20!

Redeem Your Prize Point Checks Now

The prize catalogues which were sent out to you at the beginning of our 1961 Booster Contest are now pretty much out of date. Many of the prizes shown are no longer available; prize points required for others have been substantially changed. We therefore suggest that, if you are holding 1962 Prize Point checks, you endorse them on the back and return them to the Home Office, Promotional Department, for immediate redemption in cash. They are worth one-half cent per point. It will ease our record keeping problem if you send them in for redemption now.

New Promotional Brochure Now Available

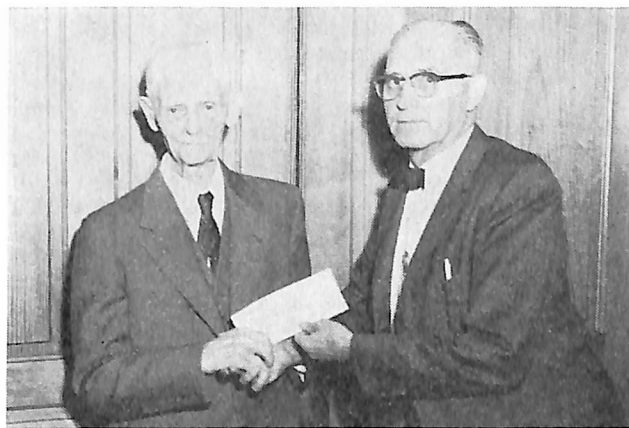
Timed to coincide with your receipt of this issue of DANISH BROTHERHOOD MAGAZINE, we are sending your Lodge secretary a small sample supply of our new Promotional Brochure of which we are very proud. We are including an order blank for the use of your Lodge in ordering whatever quantity of this new Brochure that you members feel you can use and distribute to good advantage. Ask your Secretary to show you these samples at your very next Lodge meeting.

We think these Brochures will be a really big help to you in explaining the Danish Brotherhood to eligible Prospects. You will find it includes a condensed history of our organization; what our objectives are; what the advantages of membership are; who may join as Juvenile, Insured and Social members; what insurance plans we offer and what options are available on each plan. The two back pages list our rates, by age for both male and female, on each of the insurance plans now avail-

able. There is also a space for you, as a member, to fill in your name and address so that the Prospect will know and remember that YOU talked membership to them and so they will contact you, provided you do not first again contact them. This new Brochure will SELL membership in the Danish Brotherhood for you.

Your Lodge may order as many of these as you members can put to good use — without charge. We suggest you ask your Secretary to order a supply immediately and that you start to distribute them to eligible persons so they can start doing their job for you and for your Lodge. Their job is to interest eligible persons in joining your Lodge — once the Brochure has done that, it's up to you to get a signed application! From Adults and Juveniles alike, we are a family organization so let's build up family membership. And let our Brochure do the basic selling for you.

Brother L. P. Skov of Blair Lodge 206 Collects Insurance



On Tuesday, February 12, Secretary-Treasurer Chris Bendorf of Blair Lodge No. 206 had the unusual privilege of presenting to Brother L. P. Skov, a check for the full face amount of his insurance certificate.

Along with Brother Bendorf and the other members of Lodge No. 206 and all the members of the Danish Brotherhood in America, Brother Skov, we salute you; we honor you for your sixty years of faithful membership; we congratulate you on your 96th year and we wish for you many more years of health and happiness!

Brother Skov was born in Stege, Møen, Denmark on February 12, 1867, only two years after the death of our own Abraham Lincoln with whom he shares his birthdate. He immigrated to this country in 1889 at the age of 22 and settled in the Blair area where he farmed for many years. Brother Skov became a member of the Danish Brotherhood in America on September 5, 1903 and will thus complete sixty years of membership on that date this year. As noted in an article in the Blair (Nebraska) newspaper, Brother Skov has had insurance protection for all these sixty years and yet has now received our check for the full face amount of the certificate.

We are proud to have you as a member, Brother Skov. Thank you for your sixty years of faithful membership — may you be with us for a long time to come in your unique status as an HONORARY MEMBER.

Our roving snooper asked the steno upstairs what book she would choose if in her whole life she could have only one.

Without hesitation came the reply — a checkbook.

It Pays to Sponsor New Members

It is still too early for us to be able to report to you fully on the results of our 80th JUBILEE BOOSTER CONTEST in terms of points won for sponsoring new members in 1962. Since our rules stipulate that each new member sponsored must have paid six months or more of their obligations before Prize Points will be awarded to the sponsoring member, there are of course, still quite a few Prize Point checks to be sent out.

We have however, tabulated those Prize Point checks in amounts of more than 2,000 points that have been sent out as rewards for sponsoring new members in 1962. They amount to quite a healthy total which we think you will be interested in. These rewards have been justly earned.

We are happy to send out such Prize Point checks and we are proud and happy that so many of you showed sufficient interest in the Danish Brotherhood in America to interest eligible persons in joining us and in sponsoring them. It does pay to sponsor new members, you know, and not just in the pride that stems from knowing you are doing your fair share. It pays off in Prize Point checks. Just look at the list of checks sent out thus far in amounts of more than 2,000 points — we haven't even listed the smaller checks!

Prize Points			Prize Points		
Lodge	Sponsor	Awarded	Lodge	Sponsor	Awarded
	16 Peter C. Nielsen	32,425		16 Bart Aabel	4,300
	16 Tony V. Madsen	22,550		184 A. B. Christensen	4,250
	75 Richard Sorensen	21,800		1 Chris Larsen	4,250
	161 Ova L. Schultz	17,625		144 Earl Mikkelsen	3,725
	16 Lloyd Johnson	17,000		42 I. Eskeberg	3,650
	299 Levi Persson	13,775		278 K. E. Jorgensen	3,600
	77 H. Ravnsborg	13,025		62 A. M. Petersen	3,550
	273 Art Christensen	12,100		125 R. Lauritzen, Jr.	3,000
	1 Richard C. Palle	11,950		306 Axel Pedersen	2,900
	92 Einar Danielsen	11,400		314 Robert Petersen	2,900
	144 Erhart Andersen	10,100		84 Paul E. Hansen	2,900
	288 Chris Boilesen	9,650		167 Gus Haraldsen	2,900
	67 Fredrik Andersen	9,250		219 Chris Sorensen	2,900
	323 Frank E. Jepsen	8,650		155 Hans Hansen	2,900
	15 Willy Christensen	7,800		144 Jess R. Jessen	2,900
	167 Poul Persson	7,800		184 Clarence Young	2,900
	177 Harold Jorgensen	7,250		30 Holger Thuesen	2,850
	167 Henry Barreth	7,250		95 Paul R. Chance	2,850

126 John R. Hansen	7,050	144 Wayne Paige	2,850
34 Steve Riccolo	7,000	300 Ralph Nissen	2,850
182 C. F. Larsen	6,450	225 John Christensen	2,850
43 S. A. Sonderup	6,400	126 Carl Petersen	2,850
245 Louis A. Kasa	6,025	126 Olaf Ericksen	2,850
167 M. V. Esrom	5,800	263 Clarey Jensen	2,850
144 Gary Andersen	5,650	301 H. Bundgaard	2,850
67 H. A. Jensen	5,650	17 Peder Larsen	2,850
126 I. M. Lauritsen	5,050	84 M. A. Sorensen	2,800
263 Albert Thomsen	5,050	172 M. Hampel	2,250
167 H. P. Jensen	5,000	71 Henry Lauersen	2,200
177 Carl Thompsen	4,575	155 Hans Bruun	2,200
288 John Lassen	4,425	167 D. L. Johnson Jr.	2,200
195 Fred Jensen	4,425	46 Arne Kjems	2,150
144 Russell Wolff	4,350	225 William Dews	2,150
99 Rudolph Olsen	4,300		

One of our members has already been credited with more than 20,000 points in our new 1963 Membership Drive, so you see, it does pay to sponsor new members. It pays because those prize points are worth one-half cent each to you but it pays even more in the pride you take in knowing you are helping to build up the interest and membership in your Lodge and in the Danish Brotherhood in America. And, don't forget, each time you sponsor a new member into your own Lodge, you secure the investment you have in your Danish Brotherhood insurance certificate — the more members we have the more Paid Up Additions we'll be able to issue to you and to all other insured members. And that's a mighty important "Dividend" to all of us!

Quote from that 36-20-36 Steno, "Do you want double-spacing on the carbons, too?"

**DAN CHRISTIAN ANDERSEN'S
TRADITIONELLE DANMARKSTURE**

Flyv Polarruten eller sejl med Svenske eller Norske Amerikalinen direkte til København
Hawaii — og Mexico — TURE HELE AARET

Go With The Travel Agent Who Has Been There

Dan Andersen Travel Service
2330 Market Street, San Francisco 14, Calif.

In Loving Memory

Members who have passed away since the last report

Date of Death	Name	Age	Birth-place	Lodge No.	Location	Year Joined	Cause of Death	Amount Paid
Nov. 25	Soren N. Jacobsen	81	Hjørring, Den.	78	Salt Lake City, Utah	1900	Coronary thrombosis	\$ 923.39
Dec. 29	Christian Winther	75	Gedved, Den.	301	Akron, Ohio	1922	Not reported	500.00
Jan. 15	Chris Bjorkman	67	Lolland, Den.	139	Viborg, S. D.	1935	Influenza	250.00
Feb. 11	Andrew H. Andersen	80	Slesvig	131	Tyler, Minn.	1925	Not given	1,000.00
Feb. 9	Hans P. Nelson	88	Denmark	7	Cedar Falls, Iowa	1903	Massive hemorrhage	874.35
Jan. 17	Lars Nielsen	82	Vrensted, Den.	42	Spokane, Wash.	1903	Heart attack	231.86
Feb. 14	Peter Faber	83	Tommerup, Fyn	221	Latimer, Iowa	1919	Cerebral hemorrhage	250.00
Feb. 14	Magnus B. Jensen	69	Fjallerslev, Den.	600	Omaha, Nebr.	1916	Adeno carcinoma	500.00
Feb. 21	Jens C. Jorgensen	81	Manistee, Mich.	600	Omaha, Nebr.	1902	Aortic aneurysm	1,000.00
Jan. 9	John C. Stockel	59	Perth Amboy, N. J.	46	Perth Amboy, N. J.	1935	Act. Myo. infarction	1,000.00
Feb. 21	Andrew Jensen	84	Thisted, Den.	17	Chicago, Ill.	1909	Carcinomatosis	945.72
Feb. 18	Robert C. G. Wiren	73	Copenhagen, Den.	167	Portland, Ore.	1911	Tuberculosis	1,000.00
Feb. 25	Nels Bendt	81	Aalborg, Den.	38	Laramie, Wym.	1917	Carcinoma	500.00
Mar. 1	Bernhard R. Rasmussen	94	Lolland, Den.	14	Kenosha, Wis.	1907	Bronchopneumonia	1,000.00
Feb. 20	Laurits Chr. Larsen	80	Skive, Den.	39	Oakland, Calif.	1914	Heart disease	250.00
Mar. 1	John Nygaard	72	Vitten, Den.	254	Brush, Colo.	1916	Carcinoma	250.00
Mar. 5	Nikolaj Petersen	89	Hundingsholm, Den.	157	Audubon, Iowa	1908	Coronary occlusion	221.49
Feb. 1	Heinrich S. Petersen	65	Aarhus, Den.	56	Kansas City, Mo.	1923	Coronary thrombosis	500.00
Dec. 17	Christian Olsen	79	Denmark	95	Ferndale, Calif.	1908	Myocardial infarction	483.82
Feb. 10	Chris P. Christensen	79	Varde, Den.	17	Chicago, Ill.	1923	Cancer of prostate	1,000.00
Mar. 7	Holger Nelsen	56	Waterloo, Iowa	85	Rochester, Minn.	1925	Pulmonary embolism	500.00
Feb. 5	Hans Madsen	77	Strynø, Den.	332	Ripon, Calif.	1949	Not given	Social
Feb. 8	George Lamers	80	Nykøbing Mors Den.	67	Fresno, Calif.	1936	Not given	Social
Feb. 19	Peter C. Brown	78	Brøndum, Den.	126	Los Angeles, Calif.	1930	Not given	Social
Mar. 2	George W. Endersen	78	Copenhagen, Den.	171	Jamestown, N. Y.	1940	Not given	Social

**Fly SAS to
DENMARK
as little as \$362*
economy round trip with
the SAS Group Fare!**

Any qualified group of 25 or more persons is eligible — social and sports clubs, church groups and employee associations, for example. Travel by regular scheduled SAS jet, in economy class. Write to SAS for full details. Or your SAS travel agent will give you every help in planning a group trip.

* From New York. Effective April 1st.
(Subject to government approval)

**SAS**

SCANDINAVIAN AIRLINES SYSTEM

638 Fifth Avenue, New York 20, N. Y.



NEWS FROM THE EASTERN LODGES

By VIGGO NIELSEN, 29 Church Street, Millburn, New Jersey

General Committee Eastern Lodges. The 1963 year-book has been mailed to all lodges in the East and is yours for the asking. This little book is very handy and will give you all the information regarding the lodges in the East.

A meeting of the GCEL was held March 16, in the Club room of Schenectady Lodge 190. Except for the Ex-President, Brother Lawrence Knudsen, all officers were present: President Ed Jonassen, Vice President Andrew Christensen, Secretary Joe Gillotte, Treasurer Kristian Larsen, Jr., and Trustee Geo. Godthaab. Also present at the meeting was the chairman of the GCEL promotional committee, Wm. Svendsen, and yours truly who is vice chairman. During the meeting several brothers joined us, Past Supreme President C. Bysted Christensen, Supreme Trustee Chris Madsen, Brothers Paul Petersen, 164; Henry Bukke, 190; Einar Nielsen, 314; and John Christiansen, 314. Routine business was taken care of and each officer reported on his activities since the meeting held last November in Geneva.

The chairman of the promotional committee also gave a report and although he has done a lot of work, the cooperation and results so far are not up to expectation. However, Brother Svendsen has yet high hopes for the months ahead before our convention in Perth Amboy, N. J.

Lodge No. 102, Providence, R. I. A former member was initiated into this lodge at its last meeting, Peter W. Rasmussen, and all take this opportunity to bid him welcome. Secretary Carl W. Sorensen was elected as delegate to the national convention in Erie, Pa., President Herber R. Nelson was elected alternate.

The membership drive is always an interesting subject and the hopes in 102 are high, all seem to be getting membership conscious. Are you doing your part? A thank you goes to Brother Geo. V. Petersen for his nice letter and for taking time out to visit one of our distant members.

Now that spring is here and driving once more is good, how about a surprise visit from the Brothers in the Needham section? The birthday greetings which usually goes with this newsletter have been neglected lately, but here are some belated greetings: Happy Birthday from Lodge No. 102 to Brothers Alfred Pearson, February 2; Fred Mortensen, March 7; Jens Sorensen, March 17; Adolf "Charlie" Nielsen, March 19; Henry R. Nelson, March 27; and "Ray" Frederiksen, April 11.

Lodge No. 116, Newark, N. J. Bad weather kept a lot of fellows away from our last meeting, so only a handful was present for the election of delegates to both the national and GCEL conventions. Brother Geo. Godthaab was elected delegate to the national convention with Brother Carl Torp as alternate. Brother Oluf Johansen was elected delegate to the GCEL convention with Brother Paul Ifversen as alternate. Two new social members were to be initiated, but I imagine bad weather gave them cold feet. We hope to initiate them at our April 5 meeting, which by the way also is ladies' night, this in turn means a short business meeting and following the meeting, coffee, cake and dancing to midnight.

Lodge No. 164, New York, N. Y. "Modersmaalet" is celebrating its 60th anniversary with a dinner-dance May 10, in the Danish Athletic Club, 735 65th St., Brooklyn. An excellent prime roast beef dinner will be served. Several prominent citizens and officials of the Supreme Lodge have been invited and are expected to attend. Music will be furnished by the well known Anthony Furdoch orchestra and there will be dancing until the wee hours of the

morning. Tickets are \$7.50 per person and may be obtained by contacting the treasurer of the committee, Paul Petersen, 1429 St. Lawrence Ave., Bronx 60, N. Y. Tickets must be reserved ahead of time.

Lodge No. 172, Philadelphia, Pa. Watch for details on the 60th anniversary of the lodge to be celebrated in June. A committee, consisting of Brothers Knud Kofoed, Aksel Rasmussen and Gunnar Froelich, is making arrangements. Brothers Gunnar Froelich and Knud Kofoed were elected delegate and alternate, respectively, for our two conventions coming up in the fall. The bowlers are doing very good and Brother Aksel Rasmussen is keeping them all in good form. Brothers like Mogens Hempel, Georg Olesen and Victor Christiansen are turning out to be real champions and of course the old pro himself, Aksel.

Lodge No. 190, Schenectady, N. Y. Past Supreme President C. B. Christensen received his 50-year pin March 16. The presentation was made by Supreme Trustee Chris Madsen at the 59th anniversary party given by the lodge. We were all aware of the fact that it wasn't just the 50 years that Brother C. B. had belonged to the Brotherhood, but we have a member and Brother who perhaps has done much for the survival and success of our beloved organization, mostly at a time when he served as Supreme President and the finances and future of the Danish Brotherhood weren't as stable as they are today.

It was a wonderful anniversary party with cocktails, roast pork dinner with all the trimmings and a nice crowd attending. The girls preparing and serving those dinners deserve a lot of credit. Three 50-year (or more) members were present, namely Brothers Viggo Jespersen, Ole Hansen and A. Bernstoff. A number of speakers were heard from: Supreme Trustee Chris Madsen, President of the Sisterhood, Marion Kniskern; GCEL President Ed Jonassen, GCEL Promotional Chairman Wm. Svendsen, Past Supreme President C. B. Christensen and many more. Eight ex-presidents and past officers of the GCEL were there as were all present board members of the GCEL. The president of Lodge 190, Olin Youchler, presented five Brothers with their 25-year pins. They were Brothers Carl Christensen, Albert Larsen, Jacob Christiansen, Fred. Andersen and Hans Edelfelt.

Lodge No. 242, Erie, Pa. Brother Ed Jonassen has been elected delegate to the national convention to be held in Erie in September, Brother Robert Wollman will represent the lodge as delegate to the GCEL convention in Perth Amboy, N. J., over Labor day. While General Chairman Gerald Johnson is recuperating in Florida after a recent operation, the co-chairman for the national convention committee, Brother Walter Christensen, is presiding over the committee and doing a terrific job. We here in the East know the ability of 242 and are looking forward to September 16. Good luck and a speedy recovery, Gerald Johnson.

Lodge No. 257, New York, N. Y. Have a happy and safe trip, Brother and Mrs. Herman Jacobsen. The couple has planned a 9,500-mile trip, a trip which will take them to the West coast and also to Canada. Mrs. Jacobsen just returned from a trip to Denmark. However, she was back here long enough to put up a most delicious table of Danish open-faced sandwiches at our last meeting — thanks a million — Gerda. Brother E. Jensen is delegate to the convention, while Brother Herman Jacobsen is alternate.

Lodge No. 314, Hartford, Conn. The treasurer and charter member of this lodge, Brother Anton Mose, met with an accident February 20, while working his snow-

blower. Result: a broken arm, a badly injured foot and facial cuts. He was in a Hartford hospital, but is now at home recuperating. Brother Godfred Lauridsen is in a Hartford hospital. We wish both Brothers a speedy recovery.

At the March meeting Brother John Christiansen was elected delegate to the national convention in Erie, and also to the GCEL convention in Perth Amboy. During the meeting our good brother, Secretary Einar Nielsen told us that it was 39 years ago to the date since he and Ex-President John Sivertsen left for Denmark and to commemorate the happy event a bottle of cheer was donated by Brother Einar, which nobody refused. Fifteen Brothers from Hartford visited the New Haven lodge March 13 to help celebrate its 74th anniversary. May 18, Hartford lodge will celebrate its 43th anniversary with a banquet and dance. The new Danish Consul General in New York, Viggo Jensen, Past Supreme President C. B. Christensen, Supreme Trustee Chris Madsen and GCEL President Ed Jonasen have all been invited. A Virginia ham dinner will be served. Tickets are \$3 per person and they can be obtained by contacting Brother John Christiansen, 20 Foot Hills Way, Bloomfield, Conn. Phone: Hartford 242-5496. Tickets should be reserved no later than May 15. Brother Holger Hatting (75) passed away March 9, after a short illness.

SECTION 19, PARAGRAPH 3(b)—Payment authorized in the laws of the Society, as applicable under one or more of the laws following sections: Sec. 17, par. 4 (and/or) sec. 18, par. 1; sec. 18, par. 2; sec. 19, par. 10; sec. 16, par. 1; sec. 16, par. 1; sec. 19, par. 3(b); as special information for whom it may concern: FEBRUARY—Hans M. Andersen, \$307.66; Axel Skelbeck, \$798.15; Viggo Mikkelsen, \$75.

Notes From Nebraska Lodges

The officers of the Nebraska General Committee held a board meeting February 24, at the home of Chris Larsen. Under discussion were: The 1963 convention, the new By-Laws and the state picnic.

After an informal deliberation the day for our DB and DSS convention was set for August 24 in Lincoln. Further arrangements from the host Lodge No. 84, are not complete at this time.

The 1962 convention at Minden ordered the new board members to write new By-Laws. A proposal was made, approved by all officers of the Nebraska General Committee and then submitted to the Executive Committee of the Supreme Board for acceptance. At its meeting February 20, the Supreme Board approved and signed this proposal. Therewith they became our new By-Laws. They have been considered by many and adopted as sufficient. May we then follow them closely, and leave them as they are, at least for the first two years. The new By-Laws can be ordered from the undersigned. Price 35c per copy.

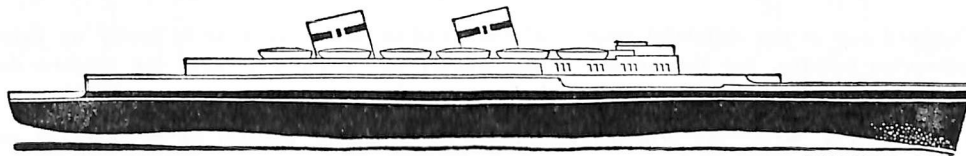
We would like to have our picnic June 9 in a Grand Island park, but our plans are not yet complete.

Promotional Director Paul Strand gave an interesting talk about the membership in our different lodges, the problems we have, and how to meet them with expansion ahead.

BOY JESSEN, Rt. 1, Lexington, Nebr.

So impressed by the surroundings in an exclusive restaurant, the young lad hardly touched his big steak. Before leaving, the father asked the waiter to put it in a bag for the dog.

"Oh, boy!" yelled the boy excitedly. "We're gonna get a dog."



Convenient and Restful Trip Directly to **COPENHAGEN**
 on the popular friendly **M.S. BATTERY**

Joyful Spring Sailing: From Montreal — May 3
 Space available for Summer sailings: From Montreal—June 7, July 5

"Thrift Season" Sailings from Montreal: August 16, September 20, October 16, November 11; from Quebec: December 7.

The BATTERY is a comfortable, spotlessly clean ship, well known for its friendly warm atmosphere, superb cuisine and most courteous service.

Minimum Rates, one way: First Class \$314 — Tourist Class \$212

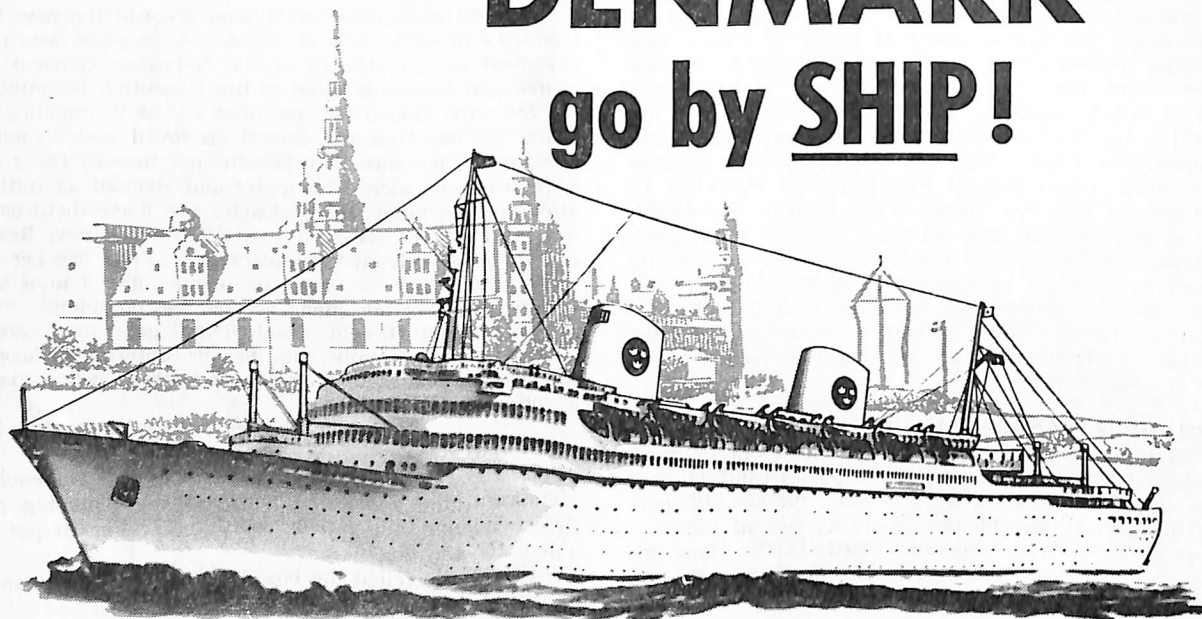
For information and reservations apply to your local agent or

GDYNIA AMERICA LINE

PICKFORD & BLACK LIMITED, General Agents
 220 Bay Street, Toronto 1, Canada



on your next trip to DENMARK go by SHIP!



A voyage aboard one of the delightful vessels of the Swedish American Line is really an extension of your Scandinavian holiday, for the setting is charmingly authentic, combining the modern decor and warm hospitality for which Scandinavia is noted.

Each day at sea is a never-to-be-forgotten round of games, sports, dances, motion pictures and other entertainment. The swimming pool and gymnasium, too, will compete for your favor. All to the accompaniment of fine food and cheerful, attentive service. The GRIPSHOLM and KUNGS HOLM provide regular service between New York and Copenhagen and Gothenburg.

DIRECT SAILINGS TO COPENHAGEN

M. S. KUNGS HOLM — April 20, June 19, July 17, August 10,
September 3, December 2

M. S. GRIPSHOLM — June 1, August 24

FOR RESERVATIONS SEE YOUR TRAVEL AGENT OR ANY SWEDISH AMERICAN LINE OFFICE

Swedish American Line

THE WHITE  VIKING FLEET

636 FIFTH AVENUE • NEW YORK 20, N. Y.

ANNUAL REPORT OF

THE DANISH BROTHERHOOD IN AMERICA

January 1 to December 31, 1962

Lodge No.	Location	Membership	Monthly Assessment	Total Insurance	Sick Benefit Paid	Extra Help Paid	Total Assets
1	Omaha	211	\$309.06	\$177,875			
2	Neenah	27	29.62	23,750	125.00		3,087.89
3	Davenport	20	23.87	16,750	27.00		1,327.40
4	Racine	483	535.52	270,750	1,263.00	100.00	459,000.00
5	Moline	9	5.60	4,750			11.14
7	Cedar Falls	16	13.51	12,500	317.23		2,933.22
9	Oshkosh	14	7.59	9,500	124.80		5,225.70
10	Council Bluffs	106	133.98	78,375	138.00		31,359.00
11	Clinton	25	23.16	16,625	25.00		5,800.00
12	Green Bay	17	8.88	12,125			1,748.89
14	Kenosha	176	169.21	103,000	1,598.25		59,960.78
15	Des Moines	56	73.84	41,625			
16	Minden	144	376.88	154,000			1,575.14
17	Chicago	178	181.78	114,750			847.65
20	Manistee	17	13.64	10,750			
26	Fremont	27	46.20	27,250	47.00		850.04
28	Badger	10	9.86	8,250			357.00
29	Seattle	287	342.70	180,500			
30	Muskegon	56	69.53	37,875	185.00		3,478.57
32	New Haven	65	52.66	38,875	269.75	12.00	9,050.71
33	Tacoma	28	21.36	14,500	101.50		6,981.84
34	Dwight	72	87.39	53,250			1,104.00
35	Chicago	79	64.15	38,500	1,028.00	225.00	20,672.54
36	Milwaukee	79	43.92	34,250	238.00		5,975.16
37	Bridgeport	48	45.56	34,875	50.00	100.00	5,795.85
38	Laramie	16	19.26	12,750			2,322.40
39	Oakland	148	136.11	98,000	514.37		50,572.46
41	Derby	43	38.20	24,125	81.00		4,436.92
42	Spokane	66	94.41	45,750			2,284.14
43	Denver	94	113.80	65,500	84.00	200.00	13,030.48
45	Minneapolis	182	181.07	102,250	360.00	61.00	8,829.72
46	Perth Amboy	80	90.69	58,125	485.00	100.00	9,174.46
49	San Francisco	286	269.18	147,625	2,025.25	74.50	20,821.61
50*	Byram	48	64.68	34,375			
51	Ludington	103	82.22	49,000			12,034.07
54	Dannebrog	8	8.53	7,000			
56	Kansas City	50	50.41	39,000	155.00		1,911.53
57	Lexington	7	6.23	6,000			
59	Menominee	57	51.77	48,625			4,350.00
62	Sioux City	31	46.37	27,625	35.00		4,000.59
64	Rockford	47	42.78	30,250	184.00		1,915.47
65	Duluth	27	19.88	19,750			
67	Fresno	93	107.63	53,500	450.00		13,664.96
70	Greenville	95	93.23	47,625			14,879.25
71	Penn Yan	95	140.04	72,750		120.00	17,979.82
73	Alden	16	8.51	15,625	96.00		1,335.18
75	Albert Lea	93	141.27	73,375	104.00		6,866.00
77	Turin	14	24.03	17,000	27.00		164.75
78	Salt Lake City	30	49.50	20,750	52.00	16.42	1,652.55
84	Lincoln	42	140.97	57,750			2,078.02
85	Rochester	11	6.98	4,250			393.00
89	Superior	18	7.90	6,875			801.89
90	Port Reading	21	16.38	12,750			818.02
91	St. Paul	47	34.42	26,500	12.00	10.00	873.00
92	St. Charles	73	97.63	46,750		116.00	5,227.77
95	Ferndale	38	48.17	26,375	329.29	15.00	11,672.33
96	Jackson	23	19.38	13,500	234.00		758.13
102	Providence	20	21.42	10,000	100.00		750.62
103	Waterbury	26	72.01	33,625	37.00		1,109.02
106	Trufant	61	76.45	44,750			1,635.53
107	Chicago	46	71.21	34,125	273.00	25.00	466.23
109	White	5	3.50	4,000	30.00		197.97
110	Winside	33	32.34	19,500			646.00
111	Austin	58	45.08	29,000	60.00	60.00	3,393.62
112	Portland	33	27.69	19,875		2.40	1,192.18
113	Enumclaw	55	63.05	28,125			11,787.06
116	Newark	153	227.30	103,125	675.40	34.30	10,006.23
117	Plainview	82	130.19	60,000			445.58
121	Tyler	33	26.07	23,250	20.00		1,221.90
125	W'ping Water	35	28.57	18,750	276.00		1,150.36
126	Los Angeles	322	513.53	236,375	1,445.32	269.00	34,277.29
128	Avoca	13	5.68	7,500			647.15
134	Ringsted	38	33.65	32,375			42.83
139	Viborg	63	43.17	32,250			9,632.54
141	Irene	10	8.22	7,250			181.50
143	Petaluma	91	83.17	54,125	139.36		10,543.42
144	Dike	69	194.23	77,750			2,002.33
147	Newell	46	61.80	31,625			650.29
148	Cheyenne	17	20.30	22,000			84.43
149	Luverne	50	36.60	25,375			390.00
150	Rorbeck	15	8.60	7,500			
152	Wilbur	32	33.41	18,625	100.00		3,640.17
153	Dannevirke	15	20.58	13,500			123.40
154*	Withee	24	35.02	23,125			
155	Bellingham	28	37.11	17,750			380.47
157*	Audubon	8	6.17	5,000			
160	Underwood	8	5.68	5,250			1,542.85
161	Ruskin	36	47.14	21,125			1,431.81
163	Edmore	20	16.75	12,750			1,378.37
164*	New York	81	91.87	51,250			
167	Portland	142	164.19	82,625	389.45		8,753.36
169*	Hubbard	11	5.61	4,750			
170*	Rocky River	83	138.83	74,000			
171	Jamestown	31	21.50	17,625			
172	Philadelphia	79	111.87	51,125			768.00
173	Kansas City	28	25.05	21,625			42.00
175	Jacksonville	7	6.56	5,750			
177	Cordova	44	60.40	36,250			
181	Sidney	46	39.19	27,250			
182	Waukegan	88	88.10	56,375			175.00
183	Troy	66	73.83	42,000			
184	Hayward	52	75.77	34,500			421.79
185	Madison	10	8.43	4,250			25.00
186	Luck	44	44.21	24,250			95.00
188	Del Rey	28	18.54	10,125			
190	Schenectady	137	194.70	104,750			876.50
191	St. Louis	13	17.69	9,750			
194	McMinnville	28	20.28	13,500			
195	Omaha	53	64.57	38,000			216.00
198	Kenmare	6	4.53	3,750			
202	Warren	38	26.45	18,500			
205	Brooklyn	26	17.01	12,125			101.50
206	Blair	7	5.38	8,000			
207*	Grayling	5	4.57	4,500			
210*	Grand Rapids	15	7.80	7,000			
211	Grand Island	19	17.94	12,500			
212	Waterloo	30	24.28	17,000			100.00
213*	Ord	10	8.36	7,500			
214	West Point	8	8.45	4,500			2.00
215	Battle Creek	12	7.45	5,250			
217	Humboldt	19	17.27	9,250			
219	Clear Lake	49	55.24	34,875			380.00
221	Latimer	11	4.94	5,000			
225	Canton	28	47.73	19,500			82.00
227	Detroit	303	286.95	163,125			2,388.60
228	Indianapolis	10	8.56	7,250			
230	Arcata	22	14.94	9,375			
233	Toledo	20	20.05	12,000			147.00
234	Woodstock	8	9.00	6,375			99.00
238	Juhl	17	13.34	12,000			
239	Lake Forest	18	11.03	9,750			247.00
240	Rochester	17	7.87	5,125			
241	Sayreville	56	43.41	27,000			401.25
242	erie	138	148.20	73,625			522.00
245	South Bend	41	56.08	27,500			14.00
248	New York	12	7.50	8,375			45.00
249	Pierre	6	5.13	4,750			
251	Devils Lake	7	4.37	4,500			
254*	Brush	14	8.18	8,250			
255	Selma	57	56.68	28,375			327.15
257*	New York	48	33.30	23,500			
259	Colman	7	4.66	4,500			4.00
260*	Williston	11	18.40	8,500			10.00
261	Fowler	57	48.33	26,000			
262	Cozad	13	6.12	4,875			
263	Askov	121	167.90	91,000			200.00
264	Pocatello	30	35.82	18,750			
267	Brigham City	5	5.57	4,000			
268	Junction City	55	37.79	23,250			200.00
273	Dillon	50	91.31	43,875			104.00
278	Salt Lake City	25	31.60	13,250			
279*	Hunter	10	9.16	7,625			
281	Cincinnati	14	11.16	11,000			115.00
283	Dagmar	117	79.94	53,625			455.00
288	Cotesfield	31	43.15	19,000			
294	Barre	34	56.73	31,750			26.00
298	Chicago	41	57.11	32,000			
299	Solvang	83	122.04	52,625			190.00
300	Oneonta	40	49.13	20,500			100.00
301	Akron	36	62.93	32,000			60.00
306	San Diego	65	65.38	28,750			
308	McCabe	14	6.68	8,500			
314	Hartford	161	163.92	78,125			820.00
315	Buffalo	5	20.69	7,750			268.32
318	Copenhagen	121					27,118.58
319	Bakersfield	24	24.35	11,500			28.76
321	W Palm Beach	34	27.71	13,125			
322	Santa Barbara	70	101.46	45,000			350.00
323	Alhambra	33	43.04	19,250			
325	Nassau Co.	90	93.76	49,875			10.00
326*	West Branch	14	8.79	5,875			1,390.00
327	Harlan	7	11.87	7,000			
328	Vancouver	93					
329	Long Beach	14	12.84	6,125			
332	Ripon	56	88.76	39,875			
334	Geneva	45	115.51	39,500			
600	Omaha	306	233.52	180,375			

The report for 1962 is not received, or was received too late to be included in the tabulation. The amounts used are taken from our records. Secretaries who find an asterisk () after their lodge number are asked to submit their 1962 report to the Home office as soon as possible.

CALIFORNIA NEWS

By **RUDOLPH OLSEN**

Suite 137, 166 Geary Street, San Francisco 9, California

The March issue of our Magazine certainly gives a lot of food for thought, as the saying goes. Right on the front page we have the Supreme President's excellent suggestions about changes in the ritual and other changes so badly needed in order to bring our society more up to date. Personally, I have always thought that passwords were a lot of nonsense. For instance, how many of our members know our standing password?

The idea of a vote for the amount of insurance held by members within the lodge is also good. For many years we in California have tried to change the method of voting because the present method of voting is not fair; you might say that the lodges are taxed without representation. I hope a change will be made this year.

S. W. Christensen has a good article called "Ritualism vs. Rationalism." Personally, I think his article is very apropos at this time.

The Promotional Pages also gives us a lot to think about. Of course, we in California ought to be happy over the fact that we came in second in getting new members last year. Of our 17 lodges, 14 took in 120 new members giving us 139,365 points. The Nebraska General Committee came in a nice No. 1. Of 20 lodges, 11 took in 164 new members with 195,400 points. These two General Committees accounted for over one-third of all members taken in last year. Now, the question in my mind is this: If we had had Brother Strand in California would we have come in as No. 1? I think so, because a good many lodges in Nebraska came alive again due to Brother Strand's activity.

From copies of letters sent by Brother Strand to the various lodges in California, and received by me, I would say that he has given our lodges out here a good deal to think about. He has given the lodges some wonderful information about their membership, age groups, and etc. To some he has given information as how to go about getting new members, etc., and I am sure if the lodges would follow Brother Strand's suggestions we would be better off, as well as successful in getting new members.

I notice that our lodges in California lead in the field of Juvenile memberships. Here is a field that has hardly been touched. If all our members would sign up their sons and grandsons it would be really something. Now, many of the lodges also take in daughters and granddaughters. Why, we could almost double our membership within a year, if we really wanted to. Why don't we?

I have just received word from Ripon lodge that our convention will now be held at the Clark Hotel in Stockton, located at Sutter and Market Streets. The convention committee is hard at work under the leadership of two live wires, in that Sister Bessie Olsen and Brother Al Tunsen are co-chairmen of the committee.

The committee informs us that we will have an old-fashioned picnic and I am all for it, but the question is, how are we going to get it all in when we meet only two days. A good many years ago we had a three-day convention with one day devoted to a picnic, politics and kindred subjects. This day was always the second day, a sort of resting period I suppose, and I hope we can get back to this old routine which, if I remember correctly, was discontinued during the last war.

Sunday, August 25 has been set aside for bowling. Maybe we can get Brother Danielsen out to supervise this event.

I have just learned that Brother Carl Hansen of Woodland passed away unexpectedly. Brother Hansen was very active in Lodge No. 303 until it consolidated with Petaluma Lodge. He was attending a funeral of a close friend and was to have been a pallbearer when he suddenly had a fatal heart attack. Brother and Mrs. Hansen were to have gone on a trip to Denmark in May. We extend our deepest sympathy to Mrs. Hansen and family.

Brother Martin Hansen, a member of Lodge No. 67 in Fresno, and for many years its secretary, is ill at the Veterans hospital at Forth Miley. He would like to have visitors. Brother Hansen has resided in San Francisco for some years now and has attended 49's meetings very regularly.

We have previously mentioned in these columns about the fine chefs we have in San Francisco. According to the latest news four of these will arrange for a top dinner to be given at Aldersly, our Danish Home in San Rafael, for the benefit of the home's building fund. All are members of No. 49 and they are: Brother Knud Nielsen, executive chef at the Fairmont Hotel; Brother Svend Aage Rasmussen, executive chef at Del Webb's Towne House (at 49's last meeting Svend Aage sponsored two new members); Brother Egon Svangren, executive chef at the Smokehouse Restaurant and Brother Erik Kristensen, executive chef at the Clift Hotel.

In writing about our next convention in Stockton we got to musing about the many conventions I have attended of our General Committee here in California. I attended my first convention in Petaluma in 1926 and have attended all of them, but one. I have enjoyed every one of them.

Our president, Brother Alvin Olsen, has asked me to convey through this column his sincerest thanks for the wonderful hospitality extended to him and his wife during his trip through California installing officers. And so say we all, who have had the privilege of having served as president of our great organization. But I think we also owe Brother Olsen as well as his partner, Sister Tove Bollerup Madsen, our thanks for taking a whole month of their time to visit all our lodges.

POSTMASTER: If undeliverable as addressed, notify on Form 3579.
DANISH BROTHERHOOD MAGAZINE, ASKOV, MINNESOTA

NEW ADDRESS

If you move, then write your name and new address in the space provided. Clip this out so that the old address is included and mail to:
DANISH BROTHERHOOD MAGAZINE, ASKOV, MINNESOTA
Also notify the secretary of your lodge of your new address.

April 1963

I belong to Lodge No. _____ My number in the lodge is _____

Name _____

New Address _____

City _____ State _____

DANE COLLEGE
BLAIR NEBR