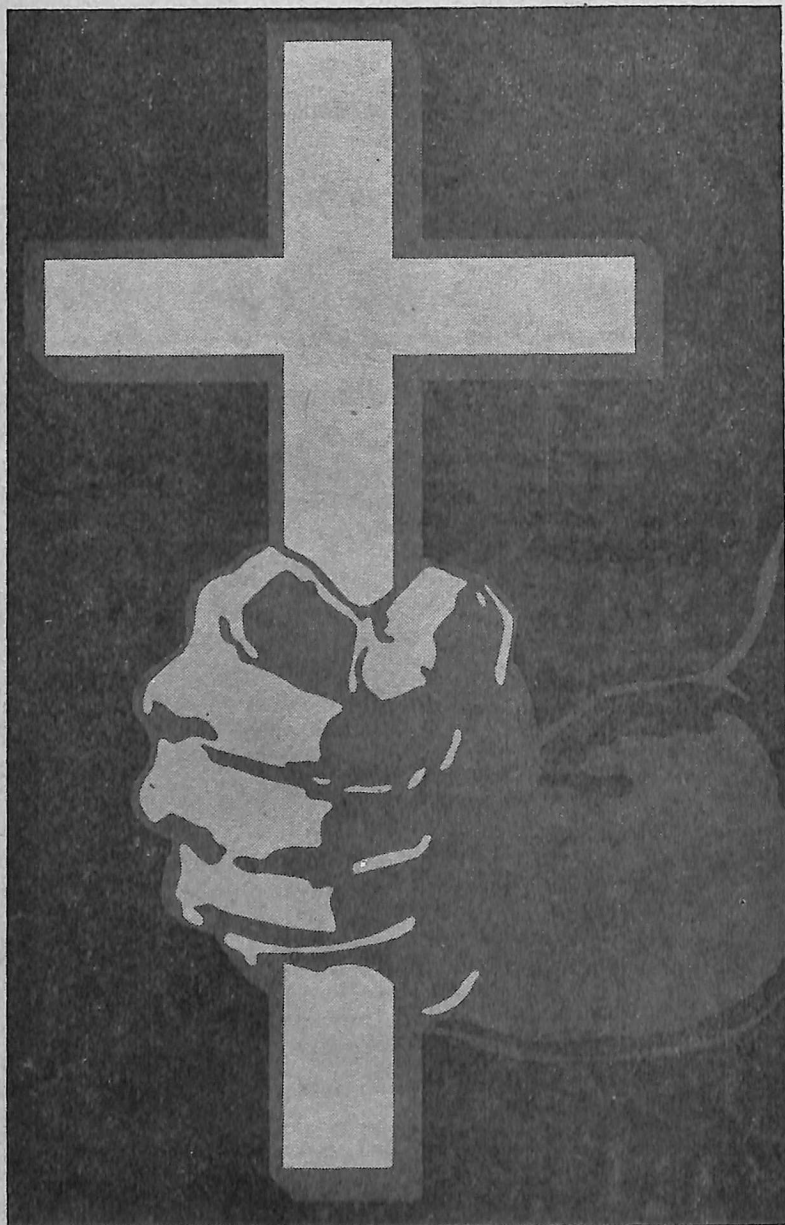


# *Lutheran*

published by:

The American Evangelical Lutheran Church

# *Tidings*



*"Love's working arm"*

**LUTHERAN**

**WORLD**

**ACTION**

**SUNDAY**

**MAY 13**

Volume XXVIII  
Number 19  
May 5, 1962

## The President's Corner

### Lutheran World Action Sunday

#### LUTHERAN WORLD ACTION —

#### LOVE'S WORKING ARM!

That is how we came to think of Lutheran World Action during the years of and especially right after World War II when the refugee camps of Europe were overflowing, missionary stations in many parts of the world were cut off from their support, and our young men were scattered throughout the world in the military camps.

Love will always express itself in deeds that are concrete, or it does not deserve the name. Even God found it necessary to clothe His love for us in human flesh. That was why He sent His Son, whom we call Lord and Saviour. His strong arm was stretched out to us because He was love.

God's love, where it has taken possession of a man, is never a sweet, inactive sentiment. It knows the facts and realities of life, and the man of God will not sit idly by as he contemplates the suffering and need of others less fortunate than himself. Lutheran World Action was, and is, an expression of this concern.

"But the war is long over," you say. Yes, but the misery it caused is not, and new areas of need are constantly springing up the world over. Lutheran World Action is aware of these areas, and intends to be there to bring help and healing. Our help may not be going to Europe in any great quantities today, but there is the immense load of refugee help in Hong Kong; in Palestine and the near East; the help toward self-help in South America, especially Chile and Brazil, our latest areas of support. Then there are the young churches in the far East, such as the Batak Church in Indonesia, where one of our own young men will soon be serving. And the educational program of the young and emerging Lutheran Church in Africa, so that leaders may be trained to help these people stand on their own feet and to act responsibly in their struggle for freedom. Let us not forget either the ongoing ministry of our church to the men in military service. I think we still wish to follow them wherever they may be. Furthermore we want to strengthen our ministry to the students in our State universities and colleges. In addition to these areas of actual need, there comes now the tragedy in Algeria. The World Council of Churches working through the Division of Inner Church with Refugee and World Service has responded to that situation with a promise of \$1,400,000 for relief and rehabilitation in that tragic area.

Ponder for a moment the following: "Some 2,400,000 now in regrouping centers must re-establish themselves. In addition, 600,000 refugees have come in from the countryside to the cities. Some 200,000 refugees must be repatriated from Tunisia and Mo-

rocco, and assistance given the 55,000 political prisoners and civilian internees at present in Algeria and France." The Lutheran World Federation has promised help in the amount of \$500,000. This means that Lutheran World Action will be there too, and so will part of you as you give your gift this year.

But is there no end to what love's working arm is called upon to do? Must we continue to give? I think each of us in his heart knows the answer. As long as hunger, ignorance, disease, prejudice, injustice and intolerance are still found in the world, God does not sit idly by. He has not forgotten His children. We, the fortunate, are the ones who forget! So, because we are tempted to go heedlessly on our merry way, we acquiesce in the suffering of God's children who in turn wonder if it is really true when we speak of His love.

"Inasmuch as you have done it unto the least of these, you have done it unto me."

**MAY 13 IS LUTHERAN WORLD ACTION SUNDAY.**

**LET EACH OF US GIVE IN LOVE!**

**A. E. Farstrup.**

### Notice of Ordination Service

Ordination services will be held at Luther Memorial Church, Des Moines, Iowa, on Sunday, May 20, at 3 p. m. Ordained into the ministry at that time will be the following candidates:

John Johansen to serve the joint parishes of St. Ansgar at Lindsay, Nebraska and Salem at St. Edwards, Nebraska; Arnold Tiemeyer to serve St. Ansgar congregation at Waterloo, Iowa; Delmar Carstens to serve St. John's congregation at Cozad, Nebraska; and Paul Pedersen to serve the Lutheran World Federation, Department of World Missions, as chaplain at Nommensen University at Medan, Sumatra.

Friends are invited and pastors able to attend are asked to meet at the Church basement at 2:30 p. m.

Let all of us remember these candidates for the ministry in our prayers.

**A. E. Farstrup, Ordainer.**

**Lutheran Tidings -- PUBLISHED BY THE AMERICAN EVANGELICAL LUTHERAN CHURCH**

Office of Publication: Lutheran Tidings, Askov, Minnesota.

Second class postage paid at Askov, Minnesota.

**POSTMASTER:** If undeliverable as addressed, attach Form 3579, give new address, and return entire paper at transient second-class rate (P. M. 355.343; 355.334; 158.22) to

**LUTHERAN TIDINGS, ASKOV, MINNESOTA**

Return Postage Guaranteed

Editor: Rev Thorvald Hansen, Box 98, Viborg, South Dakota.

Circulation Manager: Mrs. Svend Petersen, Box 204, Askov, Minnesota.

Member of Associated Church Press

Subscription price: One year, \$1.25; two years, \$2.25

Published semi-monthly on the 5th and 20th of each month.



# Contributions to Lutheran World Action From AELC 1940-1961

Year	LWA Total Minimum Goal	Accepted AELC Minimum Goal	Asked Per Confirmed Member	Actual Contribution
1940 .....	\$ 300,000.00	\$ 3,000.00	\$ .25	\$ 1,870.00
1941 .....	500,000.00	4,200.00	.40	2,522.31
1942 .....	650,000.00	5,300.00	.40	5,276.78
1943 .....	1,160,900.00	6,900.00	.50	5,859.89
1944 .....	1,315,000.00	7,818.80	.60	7,188.49
1945 .....	2,500,000.00	10,350.00	1.00	10,583.88
1946 .....	5,000,000.00	56,463.62	2.00	57,320.82
1947 .....	5,000,000.00	21,372.00	2.00	21,559.56
1948 .....	4,000,000.00	21,832.79	1.50	19,309.50
1949 .....	4,000,000.00	17,311.54	1.25	17,311.54
1950 .....	3,200,000.00	16,641.91	1.20	16,871.79
1951 .....	3,300,000.00	14,672.48	1.00	15,813.72
1952 .....	2,900,000.00	13,155.00	1.00	15,843.72
1953 .....	2,600,000.00	12,294.00	1.00	15,269.20
1954 .....	2,860,000.00	14,910.00	1.00	15,492.58
1955 .....	2,962,000.00	15,967.00	1.10	17,049.42
1956 .....	3,172,000.00	17,560.00	1.15	18,522.73
1957 .....	3,550,000.00	17,798.00	1.20	19,095.82
1958 .....	3,610,000.00	18,741.00	1.20	20,616.61
1959 .....	3,900,000.00	18,775.00	1.20	22,467.72
1960 .....	3,980,000.00	19,175.00	1.20	19,854.85
1961 .....	4,179,000.00			
22 .....	\$64,638,900.00	\$334,238.14	\$23.65	\$345,700.93
1962 .....		19,557.00		

## LWA and the AELC in Retrospect

by: Dr. Alfred Jensen

The Lutheran World Action appeal for 1962 is now in the process of building up steam in order that the members of the AELC as well as those of other Lutheran church bodies may be informed and inspired to accomplish a consecrated stewardship task in support of the domestic as well as the world-wide program now in its 23rd year of labor in the critical areas of God's vineyard.

The above statistical table has been prepared from the sources at hand among old office files and the Synod Annual Reports at the suggestion of the editor of Lutheran Tidings. I concurred readily in his thinking that in this concluding AELC year a review of the results of 22 years of cooperation with Lutheran World Action was very appropriate. I might be allowed this comment as to the accuracy of the figures. Some of the minimum goals of the overall LWA as well as a few of the Synod LWA may vary slightly due to changes made in them in the middle of the year. However, the figures of the amounts contributed to Lutheran World Action by the Synod are correct. In the first years, contributions to the various causes like the Orphaned Missions (foreign) and the work in Service Men's Centers were gathered separately, later they were fused into Lutheran World Action behind the strong challenge of the emblem of the arm thrust

forward carrying the cross, which subsequently became the most highly cherished symbol of Lutheran relief and rehabilitation activities. Love's Working Arm grew stronger and mightier as it marshalled ever increasing sympathy and support. The cause had in it the elements which appealed to warm, human hearts and rested on a solid foundation of Christian concern for fellowmen caught in the vortex of war and destruction.

The table of figures is not presented in any mood of pride of accomplishment. While proportionately the contribution of the AELC to Lutheran World Action and to Lutheran World Relief (from 1946, etc.) are in line with that of most of the other Lutheran bodies in the National Lutheran Council, it only represents very modest minimum goals, and it is in all humility that this measure of our Christian neighborliness is recounted. What could have been accomplished through this means of reaching out and binding up the wounds of criminal war and destruction, is so strikingly presented for all of us to see (and by this sight perhaps feel a twinge of regret and by the grace of God an incentive to do better in the future) by the action of LWA's "Friend in South Dakota," the late Jens N. Jessen, who, while he lived (died April 1960, 90 years old) contributed \$15,360.00 from 1946 to 1960 and who further attested to his continuing love and concern for the people served through LWA and LWF by willing a generous share of his estate: \$2,261.27 to LWA. Nor were these causes his only objects of charity. I

Dr. Jensen is President-emeritus of the AELC and through the years has been intimately involved in supporting LWA in the church.



am not presenting Mr. Jessen for special acclaim or honor for I am not even worthy of doing this. God alone will recompense. But I think it is worth the while of each one of us to reflect deeply and spiritually on the goals and the fruit of our lives in the light of what we very well realize Christ could do with these if really allowed to govern them. Mr. Jessen, of course, had no thought of helping the Synod to reach its minimum goals, although he did so especially during the six most critical years, 1946 to 1952 when he contributed more than \$12,000.00. He was involved in aiding those who were lifting burdens, freeing prisoners, providing new homes in North and South America for displaced persons, giving form and substance to those in need in the troubled areas of this stricken world, Korea, Hong Kong, Jordan, India, etc. Let not one of us say, that he gave out of his abundance, for this would still challenge us, since he gave all he had. Let us rather be reminded through his example of what the love of God through Christ can accomplish through an ordinary person and let us be thankful to God for every act and gift or help toward the work of His kingdom.

LWA and LWR were begun as and intended to be administered as emergency measures. It is now a good many years since I heard Dr. Paul Empie say that he did not expect to live to see the day, when there would be no emergencies of the kind, which LWA and LWR was instituted to cover. Those of us, and our number is legion, who have heard Dr. Empie speak at our synod conventions realize how far reaching and deep going the ramifications of the work of the Lutheran as well as Catholic, Jewish and not least Church World Service are. The cooperation in bringing relief, succor and rehabilitation to many parts of the world's trouble spots is one of the bright spots in the world's dark and disorderly picture. The help of our government in providing food, should not be

forgotten, for it enhances the value of the gifts we offer. The coordination with the other religious relief agencies likewise. In short, it would be impossible for the AELC to do much of any kind of relief and rehabilitation on a world scale except as it is a part of a larger operation and coordinated into an impressive and comprehensive whole.

One of the really important gains for the AELC as a result of its involvement in Lutheran World Action and Lutheran World Federation, which ever since 1947 when it was organized in Lund, Sweden, has been the executive arm of World Lutheranism in distributing what we and other Lutheran churches have to offer through LWA and LWR, has been the ever expanding horizon of our own people. Christian has become a dehyphenated term. National churches no longer dominate the church scene, neither does the world's population represent racial and national groups. Men are the children of God anywhere. Those in Christian churches are Christians everywhere. The connotation and designation of Lutheran as well as any other denomination does not carry with it a significance of any ultimate or eternal separation, but rather indicates one of the families included in the Holy Christian Church. We have begun to envision the kingdom of our Lord becoming the kingdom of this world.

What this will mean for the future can not be described now, but it has been a blessing to have had even a very small share in bringing this about, although it is only in its infancy yet. Let us not forget to thank those, who have labored as our leaders in the cause of LWA. The sainted Ralph Long and S. C. Michelfelder, the great leaders over many years, Carl Lund Quist, Paul C. Empie, Steward W. Herman, Rollin G. Shaffer, Mr. Confer and our own Ove R. Nielsen and many others. May God bless them and make the fruits of their labor a blessing for all of us.

### ***The 1962 LWA minimum needs***

THESE ARE THE MINIMUM NEEDS to be covered by your Lutheran World Action donations in 1962:

#### **Lutheran World Federation**

World Service .....	\$ 650,000.00
World Mission .....	1,375,000.00
Department of Theology .....	31,200.00
Latin America .....	195,000.00
Central Budget and Committees .....	36,500.00
1963 LWF Assembly .....	50,000.00
LWF Affairs Division of NLC (inc. Lutheran Immigration Service) ..	170,050.00

TOTAL Lutheran World Federation .....\$2,507,750.00

Lutheran World Relief .....\$ 400,000.00

LWR — "Share Our Surplus" Food .. 210,000.00

TOTAL Lutheran World Relief .....\$ 610,000.00

Ministry to U. S. Military Personnel .....\$ 488,750.00

Cooperation with Other Agencies ..... 160,000.00

Ministry in Temporary Communities .... 43,200.00

National Lutheran Council Services ..... 71,550.00

Promotion and Interpretation ..... 195,250.00

For Special Needs ..... 210,500.00

TOTAL .....\$4,287,000.00



Calcutta, India  
11th April 1962

Pastor Thorvald Hansen  
Editor, LUTHERAN TIDINGS  
Viborg, South Dakota

Dear Pastor Hansen:

A communication has just reached me from my office advising that you desire an article from me for a special issue of LUTHERAN TIDINGS. As I have been on a field trip now for most of a month, with a very heavy schedule of events during the past weeks, and still before me in the weeks that lie ahead, I regret there will be opportunity for me only to write you a letter, which is being typed through the courtesy of Dean Johannes Krohn's secretary here at the office of the Bengal Refugee Service in Calcutta, a project formerly known to Protestants in America as "Project Daya."

After leaving New York on March 16, I spent five days in Jordan where I observed the Lutheran World Relief distribution program and was a guest at the semi-annual meeting of the Commission on World Service of the Lutheran World Federation, and then spent a week in and around Asmara and Addis Ababa in Ethiopia, from which country the Lutheran Church has asked for assistance from Lutheran World Relief to aid very needy villagers in Eritrea and old Ethiopia.

Now I have been in India for nearly two weeks, observing distribution of Lutheran World Relief supplies in such places as Bombay, Madras, Rajahmundry, Guntur and meeting with officials of the Indian churches, the government of India, and United States government officials in the city of New Delhi.

Last night I arrived in this overburdened city, accompanied by the Rev. John G. Steinhoff of Madras, who has travelled with me most of the time in India, and who represents the Lutheran World Federation as a staff member of the Committee on Relief and Gift Supplies of India's National Christian Council. This organization distributes to some 800,000 people the government-donated surplus foods sent to India by Church World Service and Lutheran World Relief.

It may interest you to know how such supplies are channeled out and distributed to 800,000 people in this land of too many people and incalculable poverty.

The central office is located in New Delhi. Supplies are shipped to the ports of Bombay, Madras and Calcutta. Throughout the nation are 525 "contact persons" to whom supplies are consigned by the headquarters office in New Delhi and these "contact persons" receive consignment of supplies each three months and turn them over to an average of a dozen distributors for each "contact person." The distributors then serve the supplies, such as powdered milk (reconstituted before serving), whole wheat, bulgur wheat and vegetable oil, to the most needy whom they can reach, without discrimination as to race or creed. Each three months the contact persons send a report to the office in New Delhi, listing whatever inventories may be on hand and new allocations are made accordingly.

In these nearly two weeks I have observed numerous distributions. As an example I will describe briefly what I saw in Rajahmundry in Andhra State. There the Andhra Lutheran Church has a Theology Seminary. At 4 p. m., one day I saw a milk distribution to a number of children from the surrounding dwellings. They stood there, little children, with their cups in hand, each waiting for his or her dipper full of the precious fluid. When they were served they gulped the milk like desert travellers who had reached an oasis with a coconut grove.

The next morning at 6:45, Pastor Steinhoff and I drove a mile down the line to where reconstituted milk was being served on the verandah of a physician's office. There we saw some of the children who had received milk in the Seminary compound the afternoon before, but had walked that mile early in the morning to get that extra cup of milk. The lines, "a cup of water given for thee" came to my mind as I saw the toddlers lift the precious white fluid to their lips. One was almost tempted to say, "drink ye all of it." However, these children, and 140 million other children in India, do not know the living Christ.

The roughly 6,000 volunteers who distribute the food in India, day after day, week after week, and year after year, are performing a wonderful service to glorify Christ and to help little children grow stronger bodies, less likely to be felled by the sickle of tuberculosis. We should thank God for these people in our prayers and sustain their efforts with generous gifts to Lutheran World Action. May each of us strengthen the hands of those who fill the cups of little children, and with silent lips say, "Let the little children come unto Me."

Ove R. Nielsen,  
Assistant Executive Secretary,  
Lutheran World Relief.

# Around the World With Lutheran World Relief

Lutheran World Action donations received since 1940 for its support of a world-wide ministry to people in need totaled \$65,000,000, while Lutheran World Relief, since 1946 distributed clothing, medical supplies, and U. S. government surplus foods totaling over \$135,000,000 making the combined grand totals well over \$200,000,000 by the end of March this year.

The 1962 LWA Goal of \$4,287,000 will continue to finance the LWR Program, and will aid the vast work of the Lutheran World Federation throughout many needy areas of the world. In cooperation with other denominations, LWA shares in most of Church World Services' extensive projects.

Pictured below is "photographic witness" for some of the works of LWR made possible through the gifts of Lutherans across the land.



In Yugoslavia, U. S. surplus wheat delivered by LWR is baked into rolls and bread to supplement otherwise inadequate child-feeding.

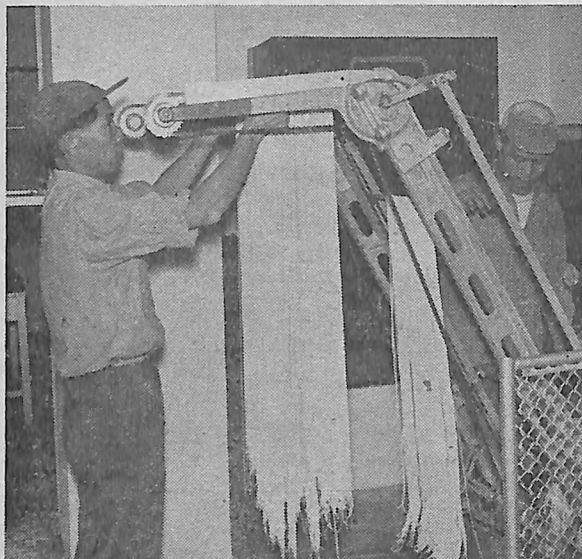


This group of children live in a South American "favela" or river slum where great numbers of people have streamed from rural areas to settle in the make-shift housing that is found or "thrown together" there. LWR assists the local Protestants churches by supplying food and clothing for distribution.

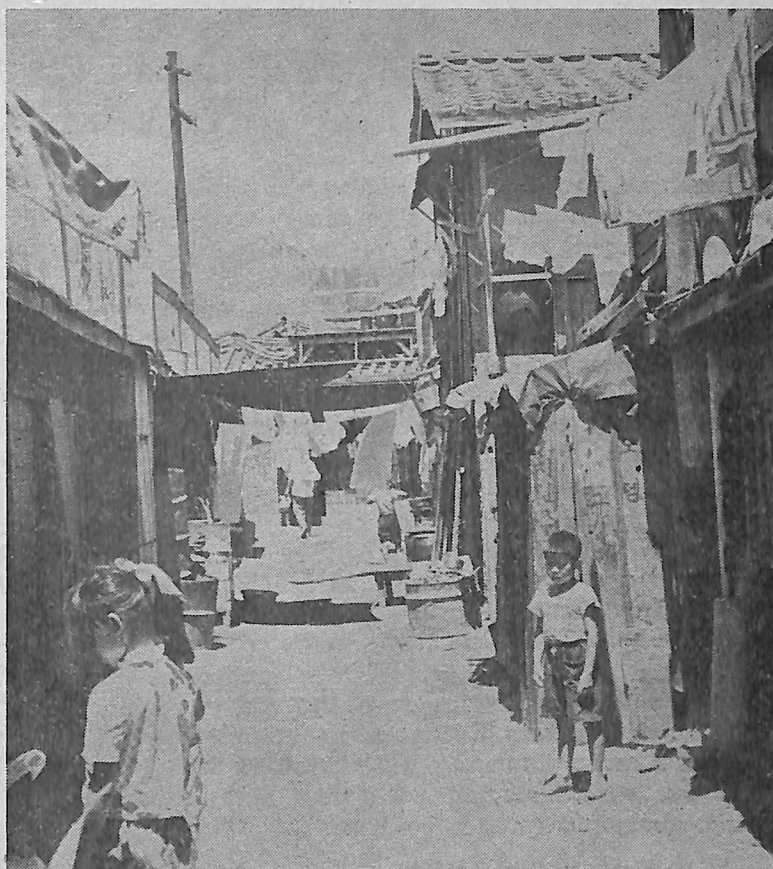


This elderly Bethlehem woman is receiving processed powdered milk for the children in her refugee camp home.





A noodle-making machine put into operation by the Lutheran World Federation in Hong Kong mixes dough then slices it into long noodle strips ready for the drying rack. The noodle plant was established to obtain the best use from flour, cornmeal and powdered milk which the Chinese find difficult to incorporate into their diet. Lutheran World Relief, the material aid agency for the National Lutheran Council and Lutheran Church-Missouri Synod, is the main supplier of the U. S. Government surplus food.



A "shack-street" in Seoul, Korea, post-war refugee settlement. Used clothing gifts by U. S. Lutherans to Lutheran World Relief protect many youngsters and their poverty-stricken parents from the cold of these almost heatless shanties.



In Hong Kong, "street sleepers" and "rooftop dwellers" have made up a considerable portion of this over-populated area for decades. Many thousands suffer TB because of malnutrition and exposure. The LWF vocational schools, aided by LWA, have afforded many the opportunity for education to become self-supporting, but LWR makes a constant "first effort" to meet the immediate requirements of these destitute folk through feeding and clothing and medical programs.

....and so the story goes: Love's Working Arm — your arm — reaches out to clothe, to feed, to heal and perhaps even to give life to those who suffer persecution and want. But LWA is a program of aid of many facets: A U. S. serviceman in the Far East may tell you that "his Service Center" is there because LWA makes it possible; a missionary in Tanganyika would gladly describe the value of the study materials printed by the LWA-aided multi-lingual Vuga Press, and a father of a little child in Jerusalem expresses his thanks for the ministrations made possible in the Lutheran hospital on the Mount of Olives.



# West Berlin Experience

by: Barbara Matthies

The tired young woman leading her two little boys by the hand was but one in a seemingly endless stream of new refugees, who came to our recreation center seeking warm clothing in those dismal weeks after August 13, 1961 — "Black Sunday." She and her husband, a few days before, had turned their backs on home and possessions in East Berlin and, with their two little boys and baby girl, had scrambled across the newly-laid barbed wire to West Berlin and the strangeness of freedom.

This family, like so many others who had come since that fateful Sunday, had no clothing other than that which they were wearing as they fled. Reaching the emergency reception camp in Marienfelde, West Berlin, they turned to the Church's representative there for help. He sent them to us.

We five girls, all recent college graduates, have been here in West Berlin since the end of June on the Church Workers Exchange Program of the National Lutheran Council. With workers from other countries, we are serving a full year here in various church-sponsored refugee centers.

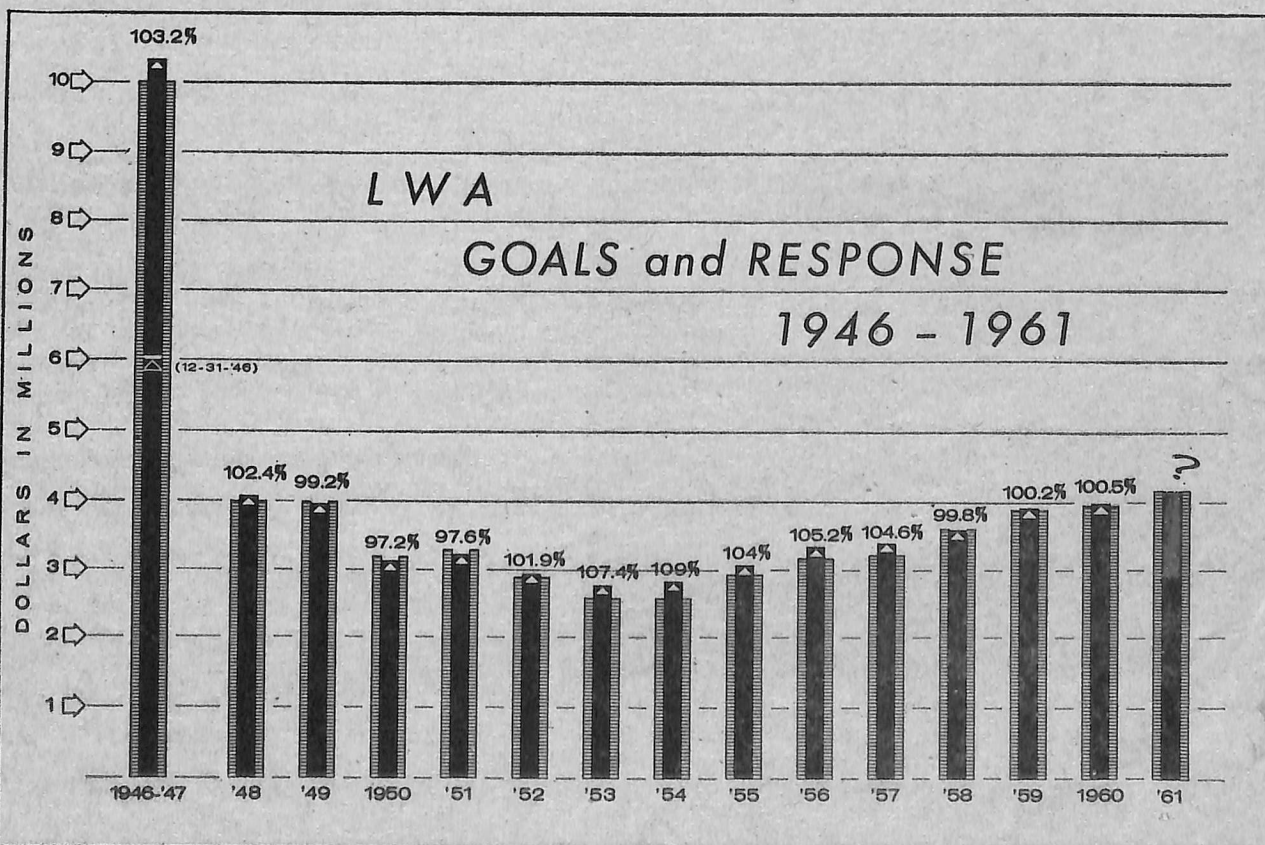
On August 13 and in the following weeks, I was working in a recreation center about two blocks from the Marienfelde camp. At the camp's request, we had devoted three large rooms to distributing clothing sent to us by Lutheran World Service. Most of the shoes, dresses, suits, coats, sweaters, etc., which we received, had come from the U.S.A.

One morning as we were sorting out a new ship-

ment of this clothing, I came across some things which looked vaguely familiar. I looked again and found, to my complete astonishment, that I was holding some clothes which my own family had given to our church's clothing drive some time ago! Now here they were with me again in West Berlin, Germany!

The tired young woman came into the room and asked shyly if we had any shirts for her boys. Yes, we did — a whole pile of my brother's polo shirts, which he had outgrown long ago. They were warm and clean, and the woman found one for each of her boys. Then she looked for something for herself and took one of mother's house dresses. We also found some baby things she could use and a shirt and underwear for her husband, for which she expressed deep gratitude. The tired look had left her eyes; and when she turned to go, her little boys trotted happily behind her, each clutching one of my brother's shirts under his arm. I didn't tell them my little secret; it became a warm glow inside me and a little lump in my throat as I watched them leave.

We came to Berlin to see the Church's program in action. Never have I experienced Christian unity and love so personally as on that August day here. It was through the Church, and by the hand of God, that that bundle of clothes traveled from Springfield, Ohio, to Europe, to Germany, to West Berlin, and to that particular refugee center in that particular week when I was working there, so that I could see firsthand that it is truly more blessed to give than to receive.



This is a graphic depiction of total LWA giving since 1946. Figures for 1961 were not complete at the time this chart was made but it could be predicted that the giving would exceed the four million dollar mark.



## Our Women's Work

MRS. AAGE PAULSEN, Editor

CORDOVA, NEBRASKA



### From the WMS President's Desk

In less than four months the Constituting Convention will have been held and the Lutheran Church Women of the Lutheran Church in America will have become a reality. For the remainder of the year we will be operating under a dual existence, for the WMS will not dissolve until December 31 of this year. One might compare it to a plant where the root has put forth new shoots while the old stem is still alive and bearing flowers and fruit. Just as the old plant gives life to the new, so the women of our church together with the women of the other three merging churches are giving life to the new organization. Therefore we cannot say that we are useless until this has been accomplished; nor can we say we die when this takes place, for since we have helped give life to the new, we also have life in the new. Let us therefore make the most of these months; let us keep our WMS strong that it may contribute true strength when it becomes a part of the new structure.

By this time those of you who subscribe to Lutheran Women will have read the constitutions of the auxiliary, the synodical unit and the congregational organization. WMS representatives on the synod JPC's will have been gaining information and understanding and bringing it into local organizations, perhaps through district fellowships. Space prevents discussion of it here, but I must comment on a matter or two.

The list of accredited delegates to the Constituting Convention has been submitted to the registration chairman. If you haven't already received your registration blanks with accompanying information, you should receive them soon. Each delegate sends in her own registration. Be sure to indicate with whom you wish to share room, if you have a preference. It was decided by the Executive Board at its recent meeting to pay the total registration fee out of our WMS treasury since it must accompany the list. We would ask that each district reimburse the treasury in the amount involved in your respective districts. **SEND NO MONEY WITH YOUR REGISTRATION.**

It is likely that all delegates will be seated according to the new synodical units when the convention convenes. To provide opportunity for our delegates and visitors to get together a fellowship is being arranged at St. Peder's Church in Minneapolis Sunday afternoon from about 4:30 to 8 o'clock. This will also enable the delegates to get some orientation regarding convention procedure, program, etc. We felt you would be more at ease during the sessions, if you had some briefing. Our members of the JPC will be present and willing to answer any questions you might wish to ask. Further details on this will appear later

on this page. We will need to know how many plan to take part. It is optional. We will be through in time to get to the hotel to register the same evening.

The financial report for 1961 was very gratifying. We need your continued support throughout this year. We have commitments within the WMS and our obligations to the Interim Budget. In fact, these will be greater than we planned for at the convention at Tyler because the JCLU decided that the Nominee Board, which was to have replaced the Joint Planning Committee in November, was not to be created. Instead the JPC should function until election of the Board of Directors at the Constituting Convention. This means that each of the present auxiliaries must pay the cost of their respective representatives on this board until then. So will you in your congregational groups be prompt and generous in your support. I added the word prompt because the money will be needed as we move along; we cannot wait until the end of the year. All commitments must be sent via the district treasurer to the national treasurer by December 1, so that she will have time to meet all obligations and close her books by the end of the year.

Not only is your material support needed; the more I become involved in this work, the more I feel the need of having you all standing beside me in it. It is a great challenge, let us face it together.

Mrs. Edwin E. Hansen.

### Special Day

Minneapolis, Minn.—Plans for an attendance of 10,000 women at the "Special Day" of the Constituting Convention of Lutheran Church Women in Minneapolis, Minn., August 1, are being made by the Joint Planning Committee of Lutheran Church Women and the Twin Cities Committee on Convention Arrangements. The Special Day will climax the history-making convention, which will create the new Lutheran Church Women from the four existing women's auxiliaries of AELC, Augustana, Suomi and ULCA.

The program for the Special Day will be held in the Minneapolis Auditorium and has been especially planned for the women of the local congregation. Dr. Ethel Alpenfels, anthropologist and professor at New York University, New York City, will give the keynote message on "World in Which We Live." Following the message, a reactor panel will discuss the subject.

At noon a box luncheon will be served at the Auditorium, offering an opportunity for fellowship among the women of the four merging churches.

The convention will close with a worship service in the evening, when the new president of the Lutheran Church in America will bring "echoes from

(Continued on Page 16)




## Paging Youth

**American Evangelical Luth.  
Youth Fellowship**

**Editor: KAREN KNUDSEN**

**Grand View College  
Des Moines 16, Iowa**



### Youth Make Plans for Their Own Auxiliary

A month and a half after the formation of the Lutheran Church in America in Detroit, that church's official youth auxiliary — the Luther League — will be constituted by representatives of over 100,000 youth members of the new Lutheran church body. Meeting in San Francisco for six days, these representative youth will form a youth auxiliary which will continue the work of similar youth auxiliaries in the four Lutheran churches which are merging.

Not only will all the convention delegates be youth, but all the preparatory work for the Luther League is being done by youth too. They are members of the Joint Planning Group (JPG) for the Luther League.

The documents for both the Lutheran Church in America and its Luther League specify that the Luther League is the church's official youth auxiliary **for youth from twelve to twenty-five years old inclusive.**

Several hundred other youth throughout the church have been asked to serve on thirty "regional JPGs" to develop specific plans for the synodical units of the church-wide Luther League. Constituting conventions for these units are scheduled for next fall and early winter with a delegate — again a youth — from each congregational Luther League.

The decision that youth themselves should be responsible for the planning of the Luther League of the LCA comes from a conviction that if the Luther League is going to be a **youth auxiliary** of the church, its leadership must also come from among the youth of the church. The Joint Commission on Lutheran Unity, the committee detailing the merger of the churches, concurred with this conviction when it passed a resolution in March of 1961 saying: "Primary responsibility for developing the constitution and other preparatory materials for the Luther League should rest on a joint planning group drawn from the comparable organizations related to our present merging churches as acting for and representing the constituency of the future auxiliary."

Though the fifteen youth who are members of the Joint Planning Group are responsible for the pre-convention planning for the Luther League, they have not been left on their own. Their advisor is the JCLU's six-member Sub-Committee on Youth Auxiliary. This Sub-Committee has a two-fold task: to advise the JPG as it makes plans for the Luther League and to make preliminary decisions concerning a **Plan of Operation** for the LCA's Commission on Youth Activities.

Because the four merging churches of the LCA had different approaches of youth work, a common and in

many cases "new" approach to youth activities has had to be developed for the LCA. Basically the plan agreed upon can be seen as a **dialog** between the church and her youth. The church will have a Commission on Youth Activities as its agent in specialized ministry to youth. The Luther League will be an organization which unites youth in their response to the ministry of the church in service and witness.

In the synods of the new church a similar relationship will exist between the synod's Youth Committee and the synodical Luther League unit.

A single "youth office" will serve both the Commission and the youth auxiliary. The Rev. Carl L. Manfred, presently the associate director of the Augustana Luther League, will be the Executive Secretary of the Luther League as well as Director of the Commission on Youth Activities. His office will be located at the Muhlenberg Building in Philadelphia.

Since its initial meeting in June, 1961, the Joint Planning Group has met five times in Chicago. Its major tasks have been to make arrangements for a constituting convention, to write documents for the Luther League, and to make preliminary decisions for recommendation to the Luther League concerning its initial program. Most of the JPG's time has been spent planning the church-wide Luther League and its synodical units, even though it has declared in the Luther League constitution that "the congregational leagues are regarded as auxiliaries which owe their first loyalty and service to their congregations." Little change of an organizational nature is expected among local leagues initially.

While the Joint Planning Group has the program for the San Francisco constituting convention still under preparation, plans now indicate that most of the convention's time will be spent discussing and determining the program for the first year of the Luther League's life. Besides programming, the documents will be studied and adopted, officers will be elected and synodical unit leaders will be briefed.

The JPG has decided that attendance will be limited to 500 delegates and certain authorized visitors for most of the convention week because of the nature and function of the "working convention" they have planned. The four present youth auxiliaries have been asked to provide the delegates from among their present constituencies in the ratio of their present memberships: American Evangelical Lutheran Youth Fellowship — 24; Augustana Luther League — 181; Suomi Synod Luther League — 24; and the Luther League of America (ULCA) — 271. The convention's weekend program — Friday evening through the Sunday morning worship service — will be open to an unlimited number of visitors.

Each of the thirty regional JPGs is busy planning a convention too. In preparation for the constituting convention of its synodical unit, each regional JPG is reviewing the synodical Luther League Unit constitution, drafting by-laws for their unit, planning a convention, and making preliminary arrangements for the district assemblies which will be part of their unit's program.

Registration of congregational leagues as member auxiliaries of the Luther League of the church will

(Continued on Page 16)



## opinion

## and

## comment



WE WOULD BE LESS than honest if we did not confess that there was a time when we took a rather dim view of Lutheran World Action. It was not that we felt that there was anything wrong with LWA in principle but that we shared the view, so common then, that this would place too much of a burden on some congregations. Happily, we were wrong. It is now common knowledge that the AELC has, with few exceptions, exceeded the minimum goal for LWA year after year. Not only so, but through the years LWA has accomplished a formidable and often "impossible" task. Statistics give an impressive record of what has been done. What they cannot reveal is the accomplishments that are written indelibly in the hearts of men—both those who have given and those who have received. May 13th is Lutheran World Action Sunday. It is with this in mind that we devote a large part of this issue of LUTHERAN TIDINGS to LWA. What has been done through the years is worthy of special note. More important is the recognition of needs that still continue to exist. These needs will stretch far into the foreseeable future. It is therefore that "love's working arm," will continue to merit our attention and best efforts in the new church as it has in the AELC.

IT WAS A beautiful day as we drove through the Iowa countryside enroute to the recent Pastor's Institute. Spring in all its radiance and glory was bursting forth on every hand. The snow was gone, the grass was becoming green and the trees were showing signs of life and leaf. Though we agree that autumn has a beauty of its own we have always been partial to spring. It always reminds us that, as the writer of Genesis tells us, God looked on his creation, including a world fresh and alive with beauty, and saw that "it was very good." Unfortunately, as we drove that day, we were also forcibly reminded of how easily and carelessly man desecrates the creation of God. The highway crews were out on that Spring day. They were trying to undo the thoughtlessness, yes, the stupidity of man. Sacks slung over their shoulders, eyes to the ground, they were cleaning the accumulated rubble from the road ditches. We'd guess that the number of beer bottles that are tossed into road ditches in America each year would stagger the imagination—as their contents may have staggered those who threw them

there. We wonder what the total annual bill is to our highway departments for clearing trash from the ditches. We wonder also how many farmers have ruined expensive tractor tires because some smart aleck threw a beer bottle out of the window of a speeding car. The figures in both cases would probably cause more than a lifted eyebrow. It is difficult to do much about this situation. Anti-litterbug laws are good but difficult to enforce. Fortunately, the slogan "don't be a litterbug" seems to be making an impression on the minds of the young. It is, in the long run, a sense of responsibility and a sense of both material and esthetic values that is necessary. Perhaps this is expecting a great deal of some. Meanwhile, all of us should bear in mind how easily we can mar God's creation. We should do what we can to keep this land of ours worthy of being called "America the Beautiful."

DID YOU KNOW that Mother's Day grew out of a tribute to a woman in a small Virginia town who had given much of her adult life to the service of her church and Sunday School? The intention was not to establish a Mother's Day, as such, but within a few years, this is what it became. There is, after all, no conflict between these two ideas. The mother who is really concerned about the total welfare of her children will be interested in her church and Sunday School. By the same token, the woman who is interested in her church and Sunday School will generally be a good mother. The honor we give on Mother's Day is often no more than an empty gesture, poor tribute to the labor of love that Mothers bestow on their families and that very often also reaches into the church and the Sunday School. It does, however, betoken the fact that we realize how indebted we are to them. Perhaps in this fact lies the greater honor. And we bestow the greatest honor when we ourselves reflect their concern and care and love to the glory of God in home and church.

MAY WE ONCE again remind all those who wish to announce events in LT that we do have an editorial deadline. All announcements should be in the hands of the editor not later than the 14th and 29th of each month. Unless they can be held over, announcements received after these dates simply serve to fill our wastebasket.



# Notice of the Annual Convention of the

## American Evangelical Lutheran Church

The congregations and pastors of the American Evangelical Lutheran Church are hereby notified that the 84th Annual Convention of the Church, a recessed meeting, will reconvene on June 24, 1962, at 8 p. m. The opening service will be held at St. Peter's Danish Lutheran Church, 19900 Greenfield Road, Detroit, Michigan. All other sessions will be held at Cobo Hall, Detroit, beginning at 9:30 a. m., on June 25 and concluding on June 27. Notice is also given herewith of the Annual Meeting of the Grand View College and Grand View Seminary Corporation Annual Meeting, a recessed meeting, which will reconvene at 2 p. m., on June 26. A Special Meeting of the GVC and GVS corporation will convene immediately upon the adjournment of the recessed meeting for the purpose of taking action upon the revision of the Articles of Incorporation and the By-Laws.

St. Peter's Danish Lutheran Church of Detroit has agreed to help with arrangements for the meeting and the housing of the pastors and delegates attending this convention, as well as the Constituting Convention of the Lutheran Church in America. Visitors will also be housed as far as possible. Meals will not be served by St. Peter's congregation but can be obtained at Cobo Hall, or nearby, for moderate prices. All arrangements will be coordinated with the Detroit General Committee for the LCA Constituting Convention.

**All registrations should be sent to REGISTRATION COMMITTEE, AELC CONVENTION, 19900 Greenfield Road, Detroit 35, Michigan, by April 25. Further information on costs, program, etc., will appear in Lutheran Tidings from time to time.**

The delegates elected by the congregations last year to the Tyler Convention will be the delegates to the meeting in Detroit, but all of them must re-register as must all pastors. Should a delegate not be able to attend the congregation should elect a substitute. If a congregation was not represented at Tyler by the full number of delegates it is allowed according to Art. IX of the AELC constitution, additional delegates up to the allowed number may be elected. Statistics for 1960 as printed in the 1961 Bulletin of Reports will govern the number of delegates from each congregation. Congregations in Districts I, VIII and IX as well as those in Danevang, Texas and Dalum, Canada are referred to Art. V, Sec. 6, a, b and d of the By-Laws of the AELC governing convention representation.

Each person registering for the convention will be charged a registration fee of \$1.00 plus a 50c incidental fee. Convention committee appointments made last

year are still in force but committees will not need to meet prior to the convention. Should a member be unable to attend, the convention chairman will appoint substitutes as needed.

All delegates and pastors, as well as visitors are urged to remain after our convention to participate in the Constituting Convention of the Lutheran Church in America on June 28 to July 1. Aside from official delegates from the AELC to this convention all delegates and pastors to the AELC concluding convention will be classified as "Official Visitors" to the LCA convention. All others may attend as "Visitors."

May I urge as many as possible of our people to attend these two historic meetings. May the Lord of the Church bless us as we assemble to complete our business as the AELC and grant wisdom, vision and trust as we merge with our sister churches into the Lutheran Church in America.

**A. E. Farstrup, President,**  
American Evangelical Lutheran Church.

### Invitation

While St. Peter's Danish Evangelical Lutheran Church of Detroit, Michigan is not the official host to the American Evangelical Lutheran Church Synod Convention, June 24, 25, 26 and 27, it never-the-less wishes to extend an invitation to all delegates and guests to the convention at Cobo Hall.

The congregation will try to house all delegates and guests who attend the conventions. We hope there will be a large delegation for these historic meetings.

Cobo Hall, the site of the conventions, is located on the Detroit River in the downtown area. It is one of the largest convention buildings in the country. Parking areas and restaurants are located right in the building.

Please send registrations to:

Registration Committee, AELC Convention  
St. Peter's Danish Evangelical Lutheran Church  
19900 Greenfield  
Detroit 35, Michigan

Registration will begin at St. Peter's Church on Saturday afternoon, June 23, and continue there throughout Sunday the 24th after which the registration desk will be moved to Cobo Hall. The church is located on the northwest side of the city. Further directions will be forthcoming as to how to get to the church and Cobo Hall.

**St. Peter's Danish Evangelical Lutheran Church,**  
**Paul Hansen, President.**  
**Howard Christensen, Pastor.**

I can see how it might be possible for a man to look down upon the earth and be an atheist, but I cannot conceive how a man could look up into the heavens and say there is no God.

**Abraham Lincoln.**



## Report From the Synod Board Meeting

Everything at this meeting seemed to spell "merger." As we get closer to this event, everything that the leaders of the synod do is done with merger in mind, and after the Executive Council of the LCA takes office July 1, what we do as leaders of the AELC will actually be under the supervision of the new church leaders.

The synod board met as such and as the Executive Committee of the Home Mission Council March 21 and 22 in Des Moines. In this connection there was also a meeting of the Board of Trustees of the GVC Endowment Fund, at which the presence of Jens G. Thuesen was greatly missed. Tributes to this servant of the AELC have been paid in the pages of "L.T." by a number of his friends and associates. Synod President Farstrup was present at Mr. Thuesen's funeral at Freds-ville. Flowers were sent on behalf of the synod for the funeral. Flowers were also sent to the funeral of Mrs. Svend Holm, Enumclaw, Washington.

Mr. Thuesen was manager of the GVC Endowment Fund's farm at Osage, Iowa. To take his place as such the Board has engaged Mr. Harvey G. Johnson of Cedar Falls, Iowa.

Local mergers are also taking place, and in some cases transfers to other synods. The two small congregations at Davey, Nebraska, ours and one of the UELC-ALC, have merged. Each will pay their obligations to their respective synod this year, and at the end of the year will vote on which synod to affiliate with. Our Bridgeport, Connecticut, congregation and its pastor, Everett Nielsen, have been transferred to the ULCA. Our Tacoma, Washington, congregation and pastor, Carl Laursen, are in the process of transferring to the ULCA. The last two congregations and pastors, in other words, are in a sense "jumping the gun" and merging before the general church merger. We will all be in the same church come New Year, 1963.

Local mergers and transfers and a number of dissolved AELC congregations in the last few years have caused our pastoral supply to be the best it has been perhaps ever. This is, of course, a sad way to make progress. Due to these factors it appears that for the first time in many years our synod statistician (yours truly) may be reporting a drop in baptized membership from 1960 to 1961.

Our pastoral supply has also improved with the reception of candidates for the ministry from "outside." An ordination service is planned for May 20 in Des Moines for four young men, of whom two are not of AELC background.

With merger coming up we are dusting off our archives collection in Des Moines so that the life and contribution of the Danish Lutheran Church in America, now the AELC, may not too soon be forgotten, and so that the History of the DLCA-AELC may be written and published in a book. The synod board was charged by the 1961 convention with the two related tasks of getting the archives put in order and of

appointing a committee to gather funds for the writing of the history of the synod.

All our pastors have received letters from the committee (Rev. Ottar Jorgensen, chairman, and Prof. Gerald Rasmussen, secretary), and our lay people will be asked to contribute toward this purpose. The AELC History Fund will be held in trust by our church until merger and then by the treasurer of the LCA. The synod board will recommend to the concluding convention of AELC that the "Danish Interest Conference of the Lutheran Church in America," when it is formed after the merger, be given the responsibility for the planning and publishing of the History of the AELC.

The synod board voted to set up a special Archives Fund, of approximately \$4,000, which was previously held in the Gift Fund. This sum is to be used for the work of classification. After our archivist, Pastor Enok Mortensen, consulted with the Iowa state archivist on the matter of classifying our archives, the idea had been entertained, of getting an archivist from Denmark to do this work, has been dropped. Pastors Enok Mortensen and Alfred Jensen, and Prof. Alfred Nielsen will do the work of classifying our archives, with the Iowa state archivist and a trained librarian, if necessary, giving advice on procedures. They synod board has decided that the balance of the Archives Fund, not used for that purpose, will then be transferred to the fund for writing and publishing the AELC History. This will, in any case, cost much more than the archives classification work.

Rules for the Danish Interest Conference will be presented for action by our concluding convention. This convention will also be asked to act on the following: a) The summary of agreements pertaining to the seminary merger at Chicago, Ill. b) amendments to the articles and by-laws of Grand View College. c) a retirement allowance of \$1,000 a year from 1963 for Dr. Alfred Jensen (this follows a suggestion from the JCLU).

President Farstrup and convention chairman Erling Jensen have agreed that findings committees will not be needed at the 1962 convention. If committee deliberation on a certain subject seems necessary, the appropriate findings committee appointed last year could be asked to act.

Our church's "Committee in Denmark" has asked that our synod's historical records be transferred to the "Emigrants Archives" in Aalborg, Denmark, when the merger takes effect. We feel that the Committee in Denmark is looking at this from the wrong angle. It is for us in America to keep and treasure these records, and to have use made of them for research, rather than to send the records to Denmark, as if the 90 year life of the Danish Lutheran Church in America was to be considered dead, buried and forgotten in America.

In this connection, too, let us mention a plea from the synod board to all congregations and individuals who have congregational secretary's minutes and other such records which are no longer current, to send these to Pastor Enok Mortensen,

synod archivist, 1003 Grandview Ave., Des Moines 16, Iowa, for placement in the archives. All records of our church's district should also go there by the end of this year.

The synod treasurer's report for 1961 showed a surplus in the general fund of \$2,990.50, and this was partly due to pension fund dues from our ministers, \$1,500 in excess of the estimated sums, plus sale of publications. Six congregations failed to meet their minimum goal, making receipts from congregations short by some \$3,000. We had adopted a budget of \$133,395 and we spent \$132,435.21. This represents a difference of less than one per cent. The Grand View Seminary Thank-offering brought in \$1,872.08 by the end of 1961, after deducting the cost of the brochure. A good deal more for this purpose has already come in after the beginning of 1962.

The synod treasurer is bonded for \$30,000, and in order to have everything in the best of shape when the funds of the AELC are transferred to the LCA treasury, our convention will be asked to approve having a C. P. A. audit made of the synod treasurer's accounts.

The statistician reports that of our 75 congregations, 35 reported what appear to be correct, consistent figures, and 40 reported what appear to be errors, or had incomplete reports. He is now in correspondence with the 40 congregations. The definitions for baptized members and confirmed members and for confirmed members in good standing (according to the JCLU-LCA) are such that they leave room for some interpretation.

Our final synod report and minutes books will be printed this year, and President Farstrup suggested, and the board has approved, that we this year print a pre-convention booklet-report without statistics and directory; that we hold the type and then following the convention add the convention minutes, the statistics-directory and the papers presented at the 1962 AELC Pastor's Institute, and have all of this bound in one final book. This will cost no more, and perhaps less, than our past system of two separate books.

The "Faith and Life Advance" treasurer's account (Erling V. Jensen, Des Moines, treasurer) have been kept open to receive delayed payments on pledges. However, very little came in following the last round of reminders, so this account will be closed as of June 1, 1962.

It is planned to appoint AELC representatives to the following: three to the Conference on Church and Economic Life at Pittsburgh, Pa., fall of 1962; two to the N. L. C. Conference on Race Relations in Chicago in the fall of 1962. Of the 278 delegates who will attend the Lutheran World Assembly in Helsinki, Finland, summer, 1963, the LCA will have about 32, and it is expected that 2 of these will be of AELC background; these will be chosen by the Executive Council of LCA.

Our home mission fields' 1961 reports were studied by the board. They are St. Stephen's Church, Chicago; Brown City, Michigan (where a building program is taking shape); Circle Pines, Minnesota;



St. Peter's, Cedar Falls (North Cedar); St. Paul's, Cedar Falls; Brayton, Iowa; and Watsonville, California. Hope Lutheran Church, Enumclaw, Washington, is now through with home mission aid. It is planned to have the Aurora, Nebraska, field, held by AELC, surveyed this summer.

**Willard R. Garred, Secretary.**

In accordance with the rules governing Grand View College notice is hereby given that the following revisions of the rules of the College will be presented for adoption at the annual meeting of the Grand View College Corporation in Detroit, Michigan, the last week of June, 1962.

**A. E. Farstrup.**

## Notice of Revision of By-Laws for Grand View College and Grand View Seminary

BE IT RESOLVED, That the following amended Governing Rules, Administrative Duties, and Methods of Procedures are hereby adopted as the By-Laws of Grand View College.

### ARTICLE I

#### Organization and Duties of the Board of Directors

**Section 1.** Immediately following the filing of the revised Articles of Incorporation of Grand View College and Grand View Seminary with the Secretary of State of Iowa, a special meeting of the Board of Directors shall be called for the purpose of considering and enacting these proposed by-laws.

**Section 2.** For the purpose of transacting the business of the Board of Directors, nine (9) Directors shall be considered a quorum.

**Section 3.** The chairman of said Board of Directors shall vote only on matters coming before said Board in the case of a tie vote.

**Section 4.** In the case of a vacancy on the Board occurring among the elected members of the Board of Directors, the vacancy shall be filled by appointment by the Executive Board of the Iowa Synod of the Lutheran Church in America for the balance of the term. In the event the Chairman of the Board of Directors of the Corporation should not be re-elected by the annual meeting of the Iowa Synod of the Lutheran Church in America, the President of said Synod shall act as convener of the annual meeting of the corporation.

**Section 5.** The Board of Directors shall elect the President of Grand View College and upon his recommendation, the members of the faculty placing fulltime teachers under contract stipulating the terms of engagement.

**Section 6.** The fiscal year of the corporation shall begin on July 1 of the calendar year and end with the following last day of June.

**Section 7.** After a study of the proposed budget of the college, submitted by the administration, listing all anticipated in-

come and expenditures, the Board of Directors shall make application to the Iowa Synod of the Lutheran Church in America, through its Executive Board, for an appropriation at its annual convention. The final budget for Grand View College shall then be presented for approval at the annual meeting of the Board of Directors for the fiscal year.

**Section 8.** The Board of Directors shall report to the annual meeting of the Iowa Synod of the Lutheran Church in America through a report by the Secretary and a report by the Treasurer, whose accounts shall have been audited by a certified public accountant.

**Section 9.** The Board of Directors shall hold the President of Grand View College responsible for maintenance, management and control of the buildings, equipment and grounds.

**Section 10.** The Board of Directors shall determine the need for new buildings and shall be responsible for planning and construction of all college buildings authorized by the corporation.

**Section 11.** The Board of Directors shall delegate the administration of its policies to the President of the College whom they shall hold responsible.

**Section 12.** It shall be the duty of the Chairman of the Board of Directors to preside at all meetings of said Board, to call special meetings of said Board as herein-after provided when he feels it would be in the best interests of the corporation to do so, to cooperate closely with the President of the College, to coordinate all work between the Board and the College officials and do all in his power to further the well-being and future welfare of the corporation.

**Section 13.** It shall be the duty of the Secretary of the Board of Directors to take minutes of all meetings of said Board, to preserve such minutes in permanent form so they shall at all times be available to the members of the Board as well as to the membership of the Iowa Synod of the Lutheran Church in America, to prepare and submit an Annual Report to the Annual Meeting of the aforementioned Synod, and to do all in his power to further the welfare of the corporation.

**Section 14.** It shall be the duty of the Treasurer of the Board of Directors to give corporate, surety and fidelity bond in such amount as shall be fixed by the Board, to maintain accurate and complete records of the finances of the corporation, to report on said finances at each annual meeting of the Board and at such other times as requested by the Chairman, to receive income from the endowment fund, synodical appropriation, and bequests, and make remittance as directed by the Board of Directors, to preserve said financial records in permanent form so that will be at all times available to any member of the Iowa Synod of the Lutheran Church in America, to prepare and submit at the annual meeting of said synod a financial report as hereinbefore set out, and to do all in his power to further the welfare of the corporation.

**Section 15.** Special meetings of the Board of Directors may be called by the Chair-

man or by any eight (8) members of the Board of Directors provided that written notice of all such meetings shall be given to each Director at least fifteen (15) days prior to said special meetings.

### Section 16.

A. There shall be an Executive Committee consisting of five (5) members to be elected by the Board of Directors at the annual meeting of the Board. The Chairman of the Board of Directors and the President of the Iowa Synod of the Lutheran Church in America shall be ex-officio members of this committee.

B. The Executive Committee has the authority to act for and on behalf of the Board of Directors between meetings of said Board. However, the Executive Committee does not have the authority to modify an action taken by the Board of Directors.

C. A majority of the Executive Committee shall be a quorum for the purpose of transacting business at any meeting of said committee.

### ARTICLE II

#### The President of the College

**Section 1.** The President of the College shall be a member of the Lutheran Church. He shall be elected by the Board of Directors, a two-thirds ( $\frac{2}{3}$ ) vote of the members of the Board being necessary for election.

**Section 2.** Duties of the President. The President of the College shall:

A. Be the chief educational officer and administrative head of the College.

B. Be responsible to the Board of Directors for the proper execution of its policies, and make annual and such other reports on the College as the Board may require.

C. Have general responsibility for all instruction, recommend candidates for the faculty and salaries, and determine their instructional duties.

D. Hire and fix salaries of part-time teachers and other personnel.

E. Be the officer of communication between the faculty and the Board of Directors.

F. Promote the Christian objectives of the College, including its ideals of scholarship, both in the faculty and among the students.

G. Be responsible for the development of the College and the maintenance of good public relations.

H. Have general responsibility for financial administration of the College, and for the maintenance, management and control of buildings, equipment and grounds of the corporation.

**Section 3.** The President shall give attention to the Christian life of the College.



Regular devotional periods shall be held under his direction, and students shall be encouraged to participate in the activities of the religious organizations.

**Section 4.** If definite charges against the President of inefficiency or neglect of duty be presented by two or more responsible persons in writing to the Chairman of the Board, he shall bring a copy of the charges to the President privately. If the Chairman shall deem the charges sufficiently serious, he shall bring the charges to the Board. The Board shall cite the President to appear, and, after reasonable notice has been given him in writing, proceed to hear evidence upon the preferred charges in his presence. If the President shall refuse to appear, or unnecessarily delays his presence, the Board may proceed to hear evidence and come to a decision. A two-thirds (2/3) vote of the members of the Board shall be necessary to sustain the charges. A two-thirds (2/3) vote of the members of the Board shall be necessary for the dismissal of the President. If the charges are sustained, the Board of Directors shall have power to suspend or dismiss the President.

**Section 5.** At the end of the academic year in which the President reaches the age of sixty-eight (68) years, his tenure of office shall automatically terminate.

### ARTICLE III

#### Rules for the Administration of Grand View College

##### Section 1. Administrative Officers and Duties:

- A. The administrative officers in addition to the President, shall be the Dean of the College, the Registrar, and the Business Manager. They shall be responsible to the President of the College.
- B. Duties of the Dean. The Dean of the College shall give special attention to its educational policy, students academic welfare and supervision of educational records, and make recommendations to the President of the College concerning these matters. He shall assist the President in making recommendations for instructional staff appointments and the assignment of their duties. He shall assume such other duties as the President of the College may assign.
- C. Duties of the Registrar. The Registrar shall perform such duties which generally pertain to his office and all others which the President of the College shall from time to time designate.
- D. Duties of the Business Manager. The Business Manager shall:
  1. Receive from the Treasurer of the Corporation all monies accruing to the College, collect tuition and fees, and receive all other funds accruing to the College, and make prompt deposits of the same in a bank designated

by the Board of Directors.

2. Sign all checks for currently budgeted items as approved by the President of the College and countersigned by him.
  3. Be the chief business officer of the College, managing the plant, property and purchasing as designated by the President of the College.
  4. Fully record all accounts and expenditures approved in the annual budget, and report as the President of the College may require.
  5. Make full accounting of all funds upon request of the Board of Directors.
  6. Assume such other duties as may be assigned by the President of the College.
- E.** At the end of the academic year in which an administrative officer reaches the age of sixty-five (65) years, his tenure of office shall terminate. At the discretion of the Board he may be retained in his office until he has reached the age of sixty-eight (68), at which time retirement shall be mandatory.

##### Section 2. The Faculty.

- A. Prospective members of the faculty shall be informed of the objects and purposes of the college as set forth in the Articles of Incorporation, and be invited to join the faculty on condition of agreement with said objects and purposes. All faculty members shall strive to conduct themselves and their work in accordance with ideals consistent with the Christian faith.
- B. The faculty shall consist of the instructional staff and the President of the College shall be chairman of the faculty.
- C. The faculty shall:
  1. Hold meetings in the interest of improving instruction and promoting high standards of Christian academic life.
  2. Determine time, place and manner of holding its meetings.
  3. Elect its own secretary and keep proper records, which records shall be available to the Board of Directors upon its request.
  4. Study and make recommendations to the Board of Directors on curriculum, admission policy, length of academic year, general program, courses of study and graduation requirements. Standing committees may be appointed to give continuous attention to these matters.
- D. A member of the faculty may be dismissed for cause by the President of the College with the

approval of the Board of Directors. Thirty (30) days notice shall be given the faculty member in case of such dismissal.

- E. The faculty may be represented by committee at a meeting of the Board of Directors if request for such representation, together with a written statement of the subject for meeting, has been filed with the Chairman of the Board of Directors and the President of the College at least three (3) days before the meeting date.
- F. At the end of the academic year in which a faculty member reaches the age of sixty-eight (68) years, his tenure of office shall automatically terminate.

##### Section 3. Students

- A. Admission. No person shall be denied admittance because of race, sex or religion.
- B. Rules. Students shall comply with the regulations of the faculty and the policies of the Board of Directors.
- C. Dismissal. The President of the College may suspend a student but a majority vote of the administrative officers is requested for expulsion. However, no student shall be denied honorable dismissal except by majority vote of the faculty.

##### Section 4. Status of Rules for Grand View College:

- A. These rules go into effect upon their adoption by the Board of Directors.
- B. All former rules for Grand View College are hereby declared null and void.

### ARTICLE IV

#### Grand View College Endowment Fund

**Section 1.** The Grand View College Endowment Fund shall be maintained by the Board of Directors of Grand View College for the benefit and support of Grand View College of Des Moines, Polk County, Iowa. Only the proceeds from this fund shall be directly employed by the College except when a resolution passed by a three-fourths (3/4) majority of the votes cast at each of two successive annual meetings of the Iowa Synod of the Lutheran Church in America shall authorize the direct expenditure by the Board of Directors of the whole or a specified part thereof. Notice of such resolution shall have been given the Executive Board of the Iowa Synod of the Lutheran Church in America and the Board of College Education and Church Vocations of the Lutheran Church in America before its presentation to the aforementioned annual meeting. The further use of this fund shall have for its purpose the furtherance of an undertaking similar to that of Grand View College.

**Section 2.** The income from the Grand View College Endowment Fund shall be used to further the work of Grand View College as determined by the Board of Directors of the corporation and as provided in the Articles of Incorporation.



**Section 3.** The fund shall be under the management of the Board of Directors of Grand View College, except as provided in Section 1 above.

**Section 4.** The principal of the fund shall be invested by said Board according to sound investment principles similar to those in use by recognized corporate trustees.

**Section 5.** The said Board shall have no power to dispose of any portion of the principal which may be invested either in real, personal or mixed property unless previously authorized as provided in Section 1 hereof, provided, however, that nothing herein contained shall limit the power of said Board of Directors to sell or convey a portion of said principal for the purpose of re-investment. All conveyances of real estate from said Endowment Fund shall be signed by the Chairman and the Secretary of the Board of Trustees, but the authority of such officers shall not be necessary for the execution of such instruments.

**Section 6.** It shall be the duty of the Treasurer of the Board of Directors to maintain accurate records of all that is on hand and of all investments of the Grand View College Endowment Fund; to keep said records in permanent form so they may be examined at any time by an interested member of the Iowa Synod of the Lutheran Church in America; to prepare and submit an annual audited report of the financial status of the Fund in sufficient time prior to the annual meeting of the Iowa Synod of the Lutheran Church in America to be included among the reports to said annual meeting; and to do all in his power to promote the welfare of the Fund in line with the

**POSTMASTER:** If undeliverable as addressed, attach Form 3579, give new address, and return entire paper at transient second-class rate (P. M. 355.343; 355.334; 158.22) to

LUTHERAN TIDINGS, ASKOV, MINNESOTA

#### Return Postage Guaranteed

**NEW ADDRESS** - If you move, then write your name and new address in the space provided. Be sure to state what congregation you belong to. Clip this out so that the old address is included and mail to LUTHERAN TIDINGS, ASKOV, MINNESOTA.

**May 5, 1962**

I am a member of \_\_\_\_\_ the congregation at \_\_\_\_\_

Name \_\_\_\_\_

New Address \_\_\_\_\_

City \_\_\_\_\_ State \_\_\_\_\_

PETERSEN, ANDREW K.  
TYLER, MINN.  
RT. 2  
6-4

## CHANGING YOUR ADDRESS?

### Don't Forget to Tell Us!

Please notify us in advance if you are planning to move so that you will not miss any copies of your magazine.

Give us your old address as well as the new one and we will make the change in time so you will receive all your copies.

## LUTHERAN TIDINGS ASKOV, MINNESOTA

principles of Grand View College as hereinafore set forth.

**Section 7.** All former rules for the Grand View College Endowment Fund are hereby declared null and void.

### ARTICLE V Amendments

Articles I, II, IV of these By-Laws may be amended only by the annual meeting of the Iowa Synod of the Lutheran Church in America duly called. Such amendments shall be published by said Synod at least six (6) weeks prior to the meeting. Article III may be amended by the Board of Directors of Grand View College except that said amendment or amendments must be ratified and confirmed by the Executive Board of the Iowa Synod of the Lutheran Church in America.

## OUR CHURCH

**Des Moines, Iowa:** A highly successful Pastors' Institute was held here on April 24 and 25. Some 50 pastors and seminary students were in attendance. We hope to bring a more complete report on this meeting in a subsequent issue.

**Luck (West Denmark), Wisconsin:** Mrs. Dora Koch, wife of Holger Koch, a former pastor in our church, died here on Easter Sunday, April 22, following a long illness. Services for Mrs. Koch were held at West Denmark Lutheran Church on Thursday, the 26th. Burial was in the West Denmark cemetery.

**Santa Barbara, California:** Pastor Aage Moller is a patient in a hospital here where he is recovering from a heart attack. We are sure we speak for many when we extend to him our best wishes for a speedy recovery.

**Nysted, Nebraska:** Mr. Don Williams, a student at the seminary in Maywood will serve the congregation here during the summer months.

**Maywood, Illinois:** Dean and Mrs. Axel Kildegaard and family will leave at the end of May for a sabbatical year in Europe. Most of the time will be spent in Denmark where Dean Kildegaard will be engaged in theological study.

**Cordova, Nebraska:** Ground was broken for the new Trinity Lutheran Church here on Sunday, May 6th. Folmer Farstrup is pastor of Trinity.

## Youth Make Plans for Their Own Auxiliary

(Continued from Page 10)

be conducted this spring by the Joint Planning Group among the congregations of the four present church bodies. In order to qualify as a "charter member" of the Luther League, congregational leagues will register with the secretary of the Lutheran Church in America before the August constituting convention of the Luther League. Forms will be mailed to every congregation by the JPG shortly with instructions for registration.

Members of the church-wide Joint Planning Group from the AELyf are Keith Davis, Jr., Hay Springs, Nebraska; Richard Jessen, Salinas, California; and John Johansen, Maywood, Illinois (treasurer of the JPG).

The JCLU Sub-Committee on Youth Auxiliary has as the AELC representative the Rev. Howard Christensen, Detroit, Mich.

— Earl H. Eliason.

(Written and released in behalf of the Joint Planning Group by its chairman.)

\* \* \* \*

## "Editorial" Comments

The Constituting Convention of the LCA Luther League in San Francisco, August 20-26, is probably the most important and exciting event in AELyf activities for a long time. I hope the delegates from AELyf to this convention will read carefully the article by Earl Eliason in order that they may have background information for their important role as voices of AELyf.

It is rather disappointing to note that although AELyf is entitled to 24 delegates only 10 have officially indicated that they will attend the convention. However, the small number should not deter them from being effective representatives of our youth. It should also be noted that the high cost of travel to and from San Francisco and of the convention fee itself would discourage many youth from attending.

Those who will represent AELyf are as follows: Joanne Andersen, Dagmar, Mont.; Jo Chadwick, Chicago, Ill.; Arild Christensen, Detroit, Mich.; Keith Davis, Hay Springs, Nebr.; Kencil Heaton, Lathrup Village, Mich.; Nancy Johnson, Dike, Iowa; Karen Knudsen, Solvang, Calif.; Janet Mortensen, Chicago, Ill.; Michael Pedersen, Waterloo, Iowa and Diane Utoft, Tyler, Minn. May God bless these young people and give them guidance as they participate in this historic event.

## Special Day

(Continued from Page 9)

Detroit" on the LCA Constituting Convention theme, "One Lord, One Faith."

Dr. Heinrich Fleischer, associate professor of music of the University of Minnesota, will open the evening service with an organ recital. A massed choir of uniformed nurses from four Minneapolis hospitals will provide special music.